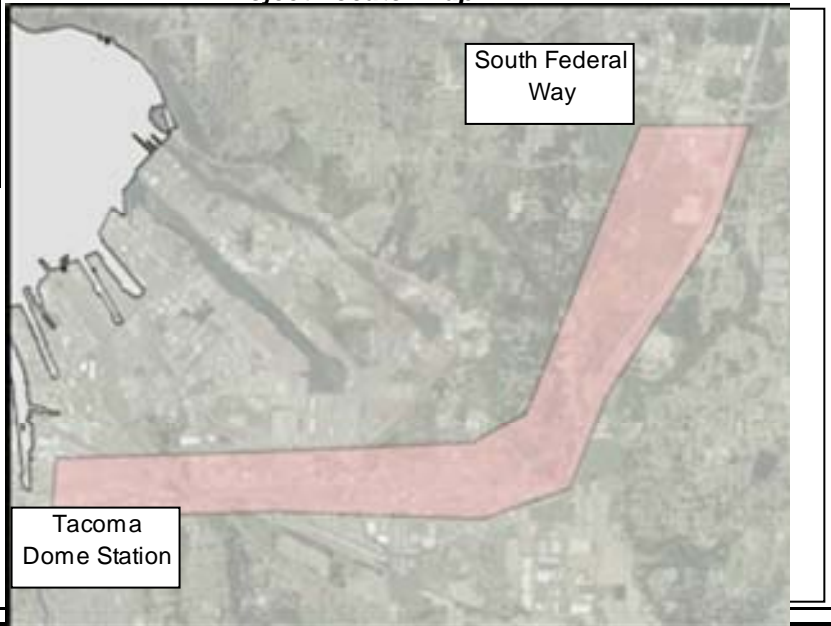


Link LRT: Right-of-Way Preservation from South Federal Way to Tacoma Dome Station

Project Number	S131
Subarea	South King
Primary Mode Impacted	Link
Facility Type	Link Service
Version Number	1.0
Date Last Modified	5/27/2007

Project Locator Map



Short Project Description

Preserve key rights-of-way for potential Link extension.

Project Purpose: To identify and acquire necessary right-of-way for future phase of Sound Transit system development between South Federal Way and Tacoma Dome Station.

Cost and Schedule

Cost (in Millions of 2007\$)

Schedule

	Low	High
Agency Admin	\$0.0	\$0.0
Environmental Clearance and PE	\$0.0	\$0.0
Final Design, Specs, Permitting	\$0.0	\$0.0
ROW Acquisition	\$40.0	\$40.0
Construction	\$0.0	\$0.0
Vehicles	\$0.0	\$0.0
Contingency	\$0.0	\$0.0
Total	\$40.0	\$40.0

Proposed Schedule Not Yet Developed

Design Basis

Conceptual

Environmental Documentation Required

- Environmental Impact Statement Required
- Environmental Assessment Required
- Environmental Checklist Required

Relationships to Other Projects

Relationship	Project
Dependent on	S132
Impacted by	S25, S16

Project Partners

WSDOT
Utilities
Cities of Federal Way, Fife, and Tacoma
FTA
FHWA
Pierce Transit
King County Metro

Link LRT: Right-of-Way Preservation from South Federal Way to Tacoma Dome Station

Long Description

Description:

This project would include ROW preservation for a potential extension of Link light rail south from South Federal Way to Tacoma Dome.

Estimated costs reflect approximately 50 percent of the ROW acquisition costs associated with constructing a roughly 7-mile segment of light rail and associated stations from South Federal Way to Tacoma Dome. Estimated costs reflect an approximately 7-mile segment from South Federal Way to Tacoma Dome.

Project Elements Included:

- Identify critical rights-of-way (part of this to be accomplished through project S132 where alternative alignments, environmental documentation and preliminary engineering will be performed.)
- Acquire or preserve right-of-way necessary to support potential future Link LRT extension from South Federal Way to Tacoma Dome.

Utilities:

- none

Right-of-Way and Property Acquisition:

- ROW preservation for future LRT

Mitigation:

- none

Exclusions:

- Any light rail construction

Permits Required:

- none

Agreements Required:

- none

ST has developed scope definitions for ST2 project proposals for the purposes of developing cost estimates, implementation schedules, a financial plan, and the estimation of project benefits. This scope definition should not be construed as a commitment that all defined features will be included in the final developed project.

Evaluation Measures

Measure	Measurement/ Rating	Notes
Average Weekday Ridership	N/A	
Capital Cost	\$40.0	in Millions of 2007\$
Annual Operating Cost	\$0.0	
Travel Time & Reliability	N/A	
Connectivity & Integration	N/A	
Land Use & Development	High	
Customer Experience	N/A	
Risk Avoidance	High	

Link LRT: Right-of-Way Preservation from South Federal Way to Tacoma Dome Station

Key Issues and Benefits

Issues:

- Some critical rights-of-way may be identified and preserved or acquired in advance of alignment planning and engineering work performed under a separate project (see S132), but this depends on cooperation from parties in ownership and/or control of those rights-of-way. Other preservation/acquisition activity would occur during or subsequent to the completion of the planning/engineering work. However, if that project is performed too far in advance of final design and construction (which would require approval of a future phase ballot proposal) there is a risk that much or all of it would have to be re-done to reflect changed conditions and regulations, and some preservation/acquisition activity may have to be delayed. Performing the planning/engineering project later in the ST2 program could minimize this risk.

Benefits:

- Preserves opportunity to seek future federal funding for construction.
- Completing this work would strengthen current cost estimates and establish a baseline scope and cost.