

SOUTH 南 DOWN 市 TOWN 中 HUB 心 规划



规划唐人街/国际区和
PIONEER SQUARE 综合交通的未来

PLANNING FOR AN INTEGRATED
TRANSPORTATION FUTURE FOR
CHINATOWN INTERNATIONAL DISTRICT
AND PIONEER SQUARE



Sound Transit 与西雅图市正携手合作南市中心枢纽计划，并与金县协调，以改善CID唐人街/国际区、Pioneer Square 及周边社区的公共空间、街道和交通连接。

此计划的制定**以社区为核心**，共同与具见解、经验和想法的当地居民、工作者及游客所指引。过去一年半以来，我们透过一系列的研讨会与社区成员交流，收集意见、关切事项和建议，以提升社区的可达性、安全性及连接性。根据所收集的意见，我们制定了更新后的设计概念，以作为未来潜在改善的项目。

现在，我们想与您分享我们的进展，并希望听取您的意见：

- 这些项目概念是否符合您对南市中心的愿景？
- 您是否有任何疑虑？

您的意见将有助于规划这些潜在改善项目的实施方向。

Sound Transit and the City of Seattle are partnering on the South Downtown Hub Plan and coordinating with King County to improve public spaces, streets, and transit connections in the Chinatown International District (CID), Pioneer Square, and surrounding neighborhoods.

This plan is being shaped **with and for the community**, guided by the knowledge, experiences, and ideas of people who live, work, and visit the area. Over the past year and a half, we engaged with community members through a series of workshops — gathering insights, concerns, and ideas about how to make the community more accessible, safer, and connected. Based on what we heard, we created updated design concepts for potential improvement projects.

Now, we are sharing back our progress and want to hear from you:

- Do these project concepts reflect your vision for South Downtown?
- Do you have any concerns?

Your feedback will help to inform direction on planning for implementation of these potential improvements.

参与概要

ENGAGEMENT SUMMARY

我们的团队致力透过以全面且共融的方式，与南市中心社群合作。我们已采取多种策略，以促进广泛的社区参与，包括：

- 大型公众研讨会：这些活动汇集了多元观点，并透过互动式素材，鼓励社群就愿景、需求和关切事项进行开放对话。
- 以社区为主的小型会议：我们与社区组织和合作伙伴合作，接触更多不同观点，并根据社区需求度身调节参与方式。
- 网上调查：我们的网上问卷提供了一种便利的方式，让当地居民、工作者及游客分享他们的想法。
- 资讯问卷素材：所有资讯素材均上载至网站和现场派发，并提供繁体中文、简体中文、越南语和英语版本，以着重无障碍性。

在持续推进这项重要工作的同时，我们将继续致力于打造一个更强大、更具连结性的南市中心。感谢您 们一直以来的参与与支持！

Our team is committed to engaging with the South Downtown neighborhoods through a comprehensive and inclusive approach. We have implemented a variety of strategies to foster broad community participation, including:

- Large public workshops:** These events have gathered diverse perspectives and encouraged open conversations on community vision, interests, and concerns using interactive materials.
- Small, community-focused meetings:** In partnership with community-based organizations and partners, we can engage more perspectives and tailor engagement to meet community needs.
- Online surveys:** Our digital surveys provide another convenient way for those who live, work, or visit the area to share their thoughts.
- Informational materials:** With a focus on accessibility, we have posted and distributed materials both online and in person, and materials are available in Traditional Chinese, Simplified Chinese, Vietnamese and English.

As we continue this important work, we remain dedicated to building a stronger, more connected South Downtown. Thank you for your ongoing participation and support.

外展與參與概覽

Outreach and engagement overview



至今在规划过程中已有**993**项意见与感想。
993 impressions made thus far in the planning process.



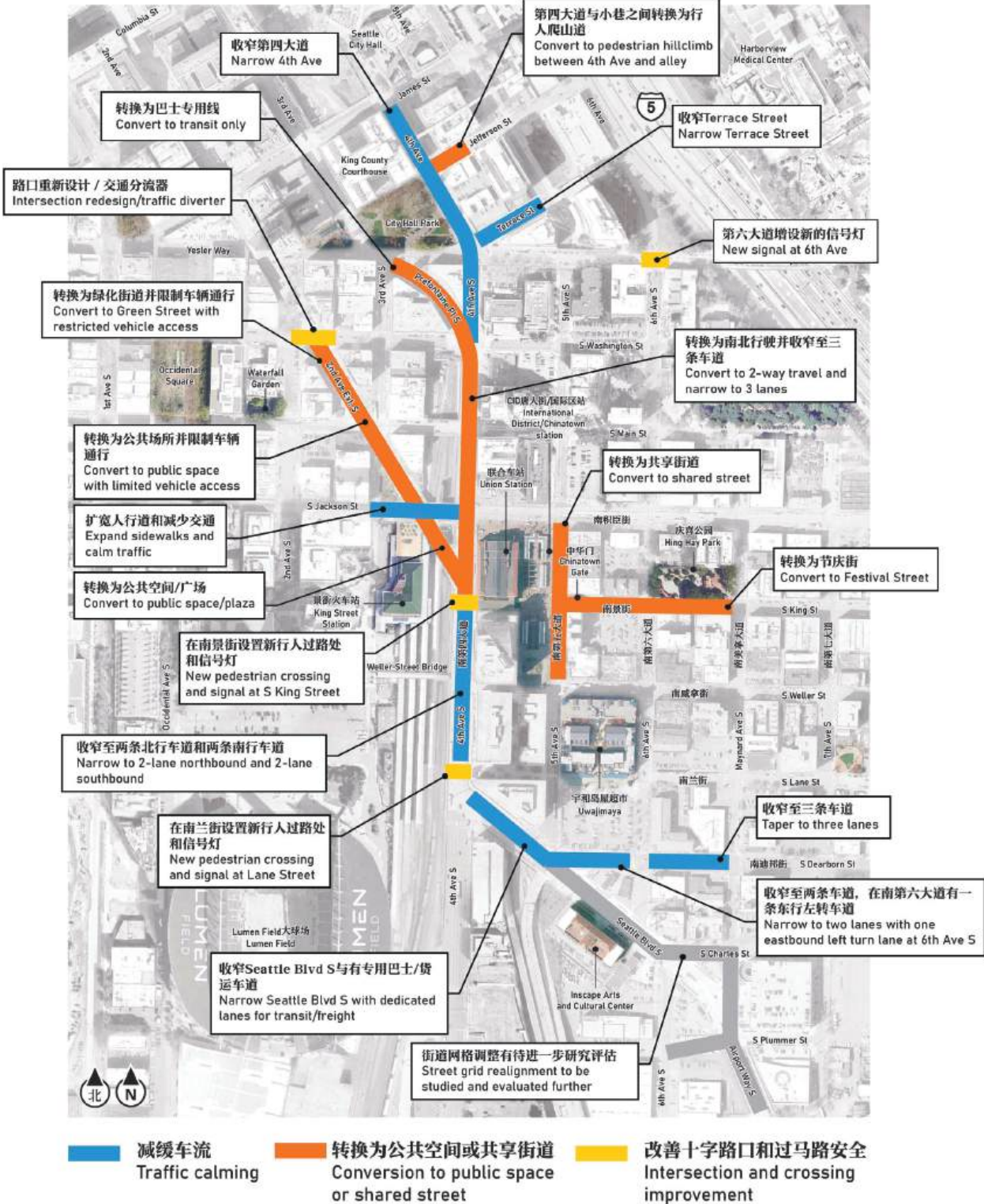
举行了**15**次面对面活动，包括**3**场大型公众活动，以及**12**场与代表社区居民、企业和访客的研讨会。
15 in-person events held, including **3** large public events, and **12** meetings with groups representing community residents, businesses, and vistors.



展览会中展出规划背景及研讨会1反馈，已于**2024**年**7**月在联合车站大厅展出，并持续开放至**2024**年**12**月。
Exhibition covering planning background and Workshop 1 feedback launched in Union Station Great Hall in July 2024; and remained open to the public until December 2024.

社区对进一步研究的方向

Community direction for further study



大多数在网上调查中的答复者都支持研究上述具变革性的网络提案，超过较不具变革性的提案。
The majority of online survey takers supported studying the above transformative network proposal over less transformational proposal.

注解：区域焦点板上显示对特定项目的详细反馈。
*Note: Detailed feedback on specific projects shown on area focus boards

2023年十一月
November 2023

开放日
Open House

- 回答问题
Answer questions
- 社区主题和项目想法
Community themes and project ideas

150

启动开放日的与会者
attendees at kick-off open house

2024年二月
February 2024

工作坊 1 和社区会议
Workshop 1 and community meetings

- 大局愿景
Big picture visioning
- 制定社区与车站连接的整体概念
Develop overall concepts for community and station connections

210

工作坊的参与者
participants in workshops

2024年七月
July 2024

工作坊 2 和社区会议
Workshop 2 and community meetings

- 特定区域的机会和问题
Area-specific opportunities and issues
- 评估连接和场所的概念
Evaluate concepts for connections and places

170

工作坊和社区会议的参与者
participants in workshop and community meetings

在线调查
Online Survey

463

完成第一次在线调查
Completed first online survey

所展示的设计只是初步构想，该设计将随着持续的发展、分析及跨政府机构协作而有所调整。资金来源与具体实施责任尚待确定。
Depicted designs are preliminary and subject to change with continued development, analysis, and interagency coordination. Funding and implementation responsibilities to be determined.

我们听到的 - 整体主题

WHAT WE HEARD - OVERALL THEMES

公共安全

Public Safety

公众安全是首要优先事项，许多人希望在公共空间中加强安全性。这包括增加员工在场、改善照明以及定期维修，以确保公众对我们的共享空间感到安全和亲切感。

右侧的热力图表是以助表达公众活动的活跃性。

- 建筑物上的蓝色显示了具有活跃用途的地面楼层，如商业场所或公共空间。
- 街道上的蓝色显示了进入建筑物内活跃空间的公共入口集中区域。

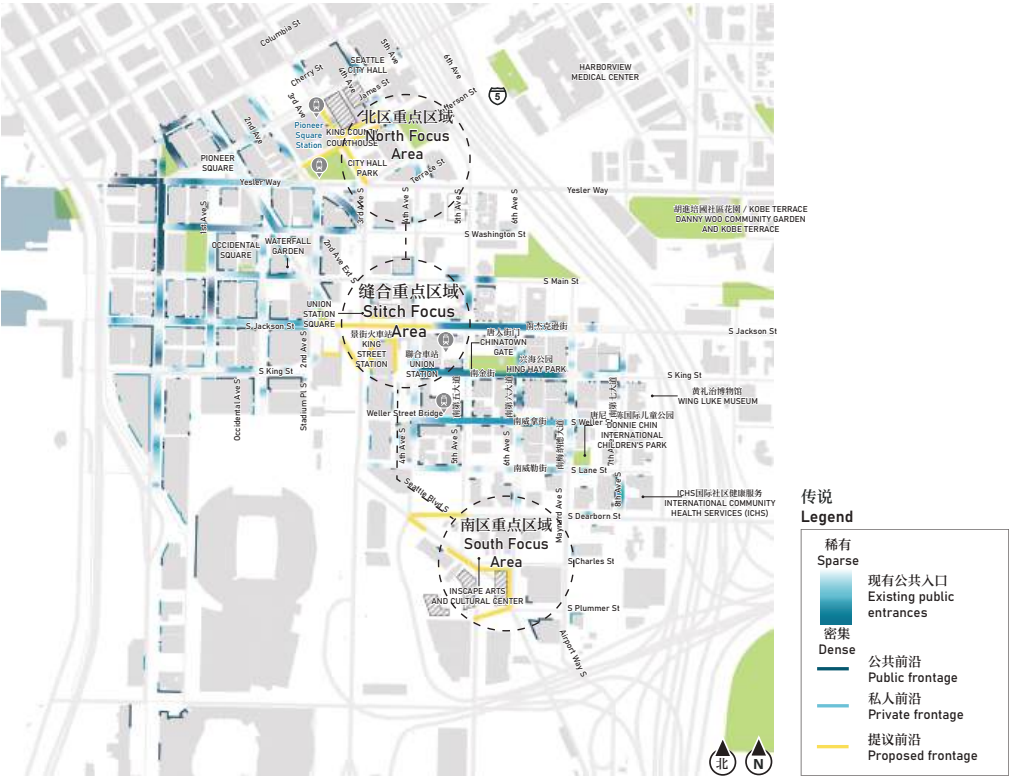
这些数据是于2024年通过观察活跃建筑立面，由人员手动收集的。圆圈显示了潜在的更多激活公共空间和改善街道景观的可能性，沿着虚线连接各个社区。

Safety emerged as a top priority, with many wanting enhanced security in public spaces. This includes more staff presence, better lighting, and regular maintenance to ensure our shared spaces are safe and welcoming for everyone.

The map to the right is a public access heat map that helps visualize public activity.

- Blue on the buildings show the ground floors with active uses, like businesses or public spaces.
- Blue on the streets shows the concentration of public entrances into active spaces in buildings.

This data was collected by hand, observing active frontages in 2024. The circles show potential for more activated public spaces and improved streetscapes along the dashed lines to connect neighborhoods.

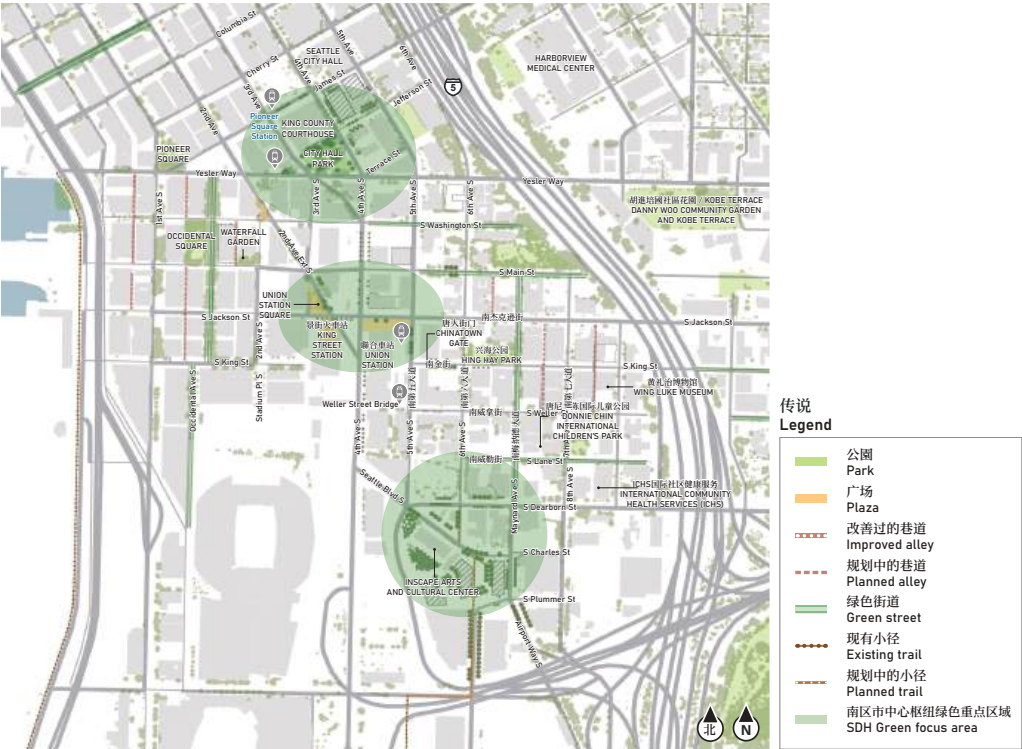


绿化空间

Green space

另一个我们听到的主要观点，是需要更多的绿化空间——一个充满树木和自然美景的社区，让都市生活与大自然和谐共处。右侧的图表显示了社区内现有的公共绿化空间和小径，并叠加了拟议中的公共绿化空间和小径。

Another key theme we heard was the need for more green spaces – visions of a neighborhood filled with trees and natural beauty, where urban life harmonizes with nature. The map to the right shows existing public green spaces and trails in the neighborhoods, with an overlay of proposed public green spaces and trails.



平衡连贯性与转型

Balancing continuity & transformation

我们也听到你们对南市中心工程可能带来的干扰的忧虑。小型企业和社区居民仍在承受近期干扰的压力，包括由COVID-19疫情以及与海滨重建和多模式街道改善相关的持续建设项目所引起的影响。

然而，许多人对现在以汽车为中心的空间转变为以人为中心的潜力感到兴奋。这一转变有望创造出更具活力、更具连接性且以社区为中心的区域，让公众有效连系并繁荣发展。随着区域交通在这里的发展，该地区将发生变化。南市中心 枢纽规划过程致力于利用社区未来的变化来实现社区愿景。

We also heard your concerns about potential disruptions from the South Downtown Hub work. Small businesses and neighborhood residents are still feeling the strain of recent disruptions, including those caused by the COVID-19 pandemic and ongoing construction projects related to the waterfront redevelopment and multimodal street improvements.

However, many are excited about the potential transformation of our spaces from car-centric to people-centric. This shift promises to create more vibrant, accessible, and community-focused areas where people can connect and thrive. The area will change as regional transit grows here. The South Downtown Hub Planning process strives to leverage future changes in the neighborhood to fulfill community vision.



一组当代照片，展示社区的活力、需要保护的元素以及最小化干扰的措施

来源：Seattle-Chinatown-International District Business Improvement Area, History Link, Seattle Arts Commission, and Coasting with Culture.

A collection of contemporary photos showing the vibrancy of the neighborhoods, elements to protect and minimize disruptions.

Sources: Seattle-Chinatown-International District Business Improvement Area, History Link, Seattle Arts Commission, and Coasting with Culture.



概念图展示了随着交通和连接的增长，该地区的转型潜力
Concept image showing the potential for transformation of the area as access and connections grow

所展示的设计只是初步构想，该设计将随着持续的发展、分析及跨政府机构协作而有所调整。资金来源与具体实施责任尚待确定。Depicted designs are preliminary and subject to change with continued development, analysis, and interagency coordination. Funding and implementation responsibilities to be determined.

分析

ANALYSIS

转型将改变现有的模式

Transformations would alter existing patterns

南第四大道和2nd Ave Ext S 是非常繁忙的干道，旨在让车辆进入市中心，包括往北和往南行的巴士。

然而，尽管南第四大道对车辆和巴士运行顺畅，但对于行人和当地居民来说，却存在挑战。这条繁忙的道路分隔了CID唐人街/国际区和Pioneer Square，以至这两个社区之间的安全性和舒适度，以及与区域性交通连接变得困难。

去年，我们听到有关将2nd Ave Ext S 改变为公共空间的兴趣，并调整Seattle Blvd S 的街道网格，这将改变南市中心的交通流向。

4th Ave S and 2nd Ave Ext S are high traffic arterial roads designed to move vehicles into and out of downtown, including buses heading north and south.

However, while 4th Ave S works well for cars and buses, it poses challenges for pedestrians and people living in the area. The busy road separates the CID and Pioneer Square, making it difficult to move safely and comfortably between the neighborhoods and regional transit connections.

Last year, we heard interest in converting 2nd Ave Ext S into public space, and realigning the street grid at Seattle Blvd, which would alter the routing of traffic flows in South Downtown.

- 1

为实现对**22nd Ave Ext S** 的变更:

 - 需将南第四大道于S Washington St 至南积臣街之间的路段改为双向行车。
 - 约三分之二向南行驶的车辆需在S Washington St驶入南第四大道，这可能会导致各个方向的行车时间增加多至最多 11分钟。
 - 一些行人及单车通行的冲突能被消除，但可能会导致车辆转向行人通道的情况加剧，特别是在南第四大道与南积臣街。

To accomplish changes to **2nd Ave Ext S**:

 - 4th Ave S would need to be converted to 2-way traffic between S Washington St and S Jackson St.
 - Approximately two-thirds of vehicles traveling south would need to move to 4th Ave S at S Washington St, potentially increasing travel times to up to 11 minutes in all directions of travel.
 - Some conflicts between people walking and biking would be eliminated, but would likely result in heavier vehicle turning movements across crosswalks, particularly at 4th Ave S and S Jackson St.
- 2

为实现对**Seattle Blvd S** 及南迪邦街的改变:

 - 需要进一步分析与规划，以确保改善措施能够分阶段实施，并维持车辆通行与货车运营的顺畅。
 - 应重新考虑南迪邦街和南第六大道长期功能的定位，以支持潜在新开发区域内的整体社区氛围。

To accomplish changes to **Seattle Blvd S** & **S Dearborn St**:

 - Further analysis and planning is needed to ensure improvements are phased in such a way to maintain vehicle movement and freight operations.
 - Long-term functional designation of 6th Ave S south of S Dearborn St should be reconsidered to support a cohesive neighborhood feel in potential new development areas.

现有巴士网络现况

Existing bus network conditions



目前，巴士路线主要在第三大道和第二大道南行及第四大道北行运行

Bus routes currently run primarily on 3rd Ave and the paired 2nd Ave southbound and 4th Ave northbound

穿越南市中心枢纽区域的巴士路线和服务可能有所调整，随着未来十年间区域快捷公共交通将逐步被Link轻轨扩展项目取代。

- 跟据目前的网路显示，2nd Ave Ext S至南积臣街及南第四大道的巴士流量较大。
- 于2025年至2032年间，随着区域性路线逐步由Link轻轨向北与向南的扩展计划所取代，南积臣街以南的南第四大道巴士路线可能将有所减少。
- 在Ballard Link通车后，巴士服务可能将出现更大幅度的变更，南积臣街以南的南第四大道巴士路线可能会 进一步减少。

Bus pathways through the SDH area may also shift and bus service will change as regional express services get replaced by Link extensions over the next decade.

- The current network sees heavy bus movements from 2nd Ave Ext S to S Jackson St and 4th Ave S.
- Network changes between 2025 and 2032 – as regional routes are replaced by successive phases of Link expansion north and south – could translate into a reduction of bus routes operating on 4th Ave S south of S Jackson St.
- After Ballard Link opens, greater changes to bus service and potential further reduction of bus routes operating on 4th Ave S south of Jackson St are likely.

分阶段调整与转型

Phasing adjustments and transformations

在进一步的设计与交通研究后，并考虑到社区反映的意见，我们建议采取共融方案，以反映此复杂环境、阶段性规划的思量和资金需求。

After further design and traffic studies, and keeping in mind community feedback, we recommend focusing on a blended scenario to reflect this complicated environment, phasing considerations, and funding needs.

- 1

在Ballard Link扩展项目开通及当地巴士网路调整前，优先关注南第四大道与南积臣街「Stitch针迹」区域的调整，以减少进入市中心的车流量。

Focus on adjustments to the 4th & Jackson “Stitch” area before the opening of the Ballard Link Extension and the accompanying changes to the local bus network – which may reduce driving into downtown.
- 2

在Ballard Link扩展项目及全市巴士网路调整完成后，进一步评估对「Stitch针迹」区域进行更具变单性的改善方案。

Option to pursue more transformative improvements to the “Stitch” area after the Ballard Link Extension and the citywide bus network changes.
- 3

在Ballard Link扩展项目建设期间，配合在兴建位于南迪邦街与南第六大道潜在的CID唐人街/国际区车站时，同时推动Seattle Blvd S、Airport Way S、南第六大道及S Plummer St与Charles St周边街道网格调整。

Pursue street grid changes around Seattle Blvd S, Airport Way S, 6th Ave S, and S Plummer and S Charles Streets during construction of the potential CID Station at S Dearborn St and 6th Ave S as part of the Ballard Link Extension.

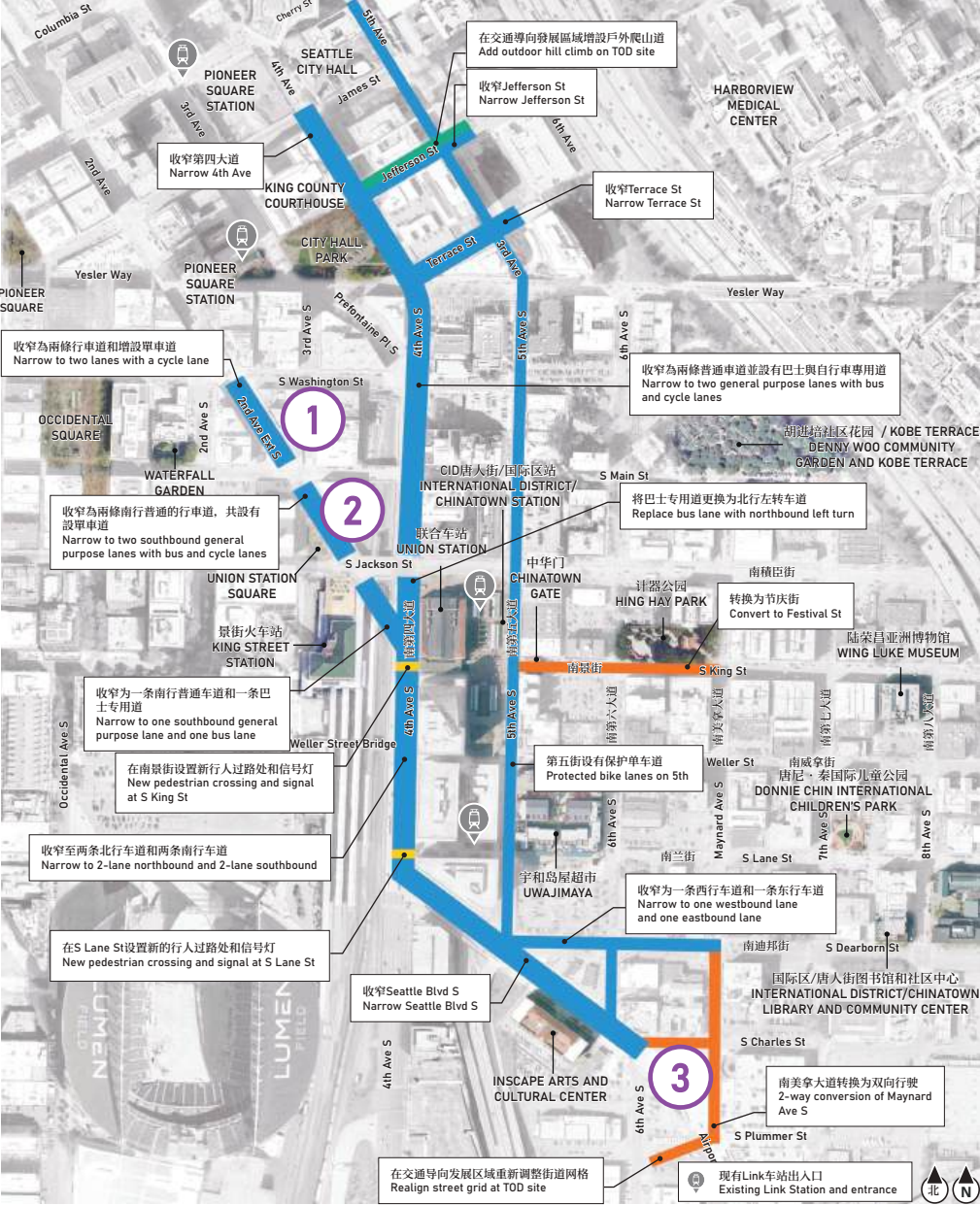
我们研究的网络转型

Network transformations we studied



建议对南市中心枢纽网络进行以下变更

Recommended South Downtown Hub network changes



所展示的设计只是初步构想，该设计将随着持续的发展、分析及跨政府机构协作而有所调整。资金来源与具体实施责任尚待确定。Depicted designs are preliminary and subject to change with continued development, analysis, and interagency coordination. Funding and implementation responsibilities to be determined.

对针迹的定义

DEFINING THE STITCH

犹如针线将多块布料细致缝合在一起，位于2nd Ave Ext S、南第四大道及南积臣街地区的各个构想项目，旨在加强南市中心社群之间的连系，因此我们将其命名为「针迹（Stitch）」。

南市中心具有成为步行友善城市入口的潜力，提供多元的交通选择。然而，要实现这一目标，需与现有交通系统交流合作，并持开放态度调整其运作方式。在这一过程中，必须谨慎行事，并以社区的意见和指导为核心。透过推动以社区为中心、社区主导的解决方案，我们可以改善南市中心社群的连接性，同时保护其作为城市与地区独特文化地标的重要价值。

本展示图呈现了我们在去年社区研讨会中探索的方案，展示如何透过改善连接性与公共空间，缝合南市中心社群，并提升对地区交通服务的连接。

Just like a stitch joins pieces of fabric, the concept for the area around 2nd Ave Ext S, 4th Ave S, and S Jackson St aims to strengthen connections between neighborhoods throughout South Downtown, which is why we are calling it the "Stitch".

South Downtown has the potential to serve as the entry to a walkable city with access to a multitude of mobility options, but this requires engaging with the current transportation system and being open to modifying how that system operates. This must be done with the utmost care and with the guidance of community. By focusing on community-centered and community-driven solutions, we can improve access to and around South Downtown neighborhoods and preserve what makes them important and unique places in the city and the region.

This board depicts how the improved connections and public spaces we explored in last year's community workshops could help stitch together South Downtown neighborhoods and improve access to regional transit service.

灯光 / Lighting



红色 King K56 照明装置 [CID]
Red King K56 fixture [CID]



三个球形街灯 [PSQ]
Three-ball globe streetlight [PSQ]



悬链式灯光 [针迹]
Catenary lights [Stitch]



桥梁照明 [针迹]
Bridge lighting [Stitch]



棒状灯 [针迹]
Stick light [Stitch]



光影投影 [针迹]
Light projection [Stitch]

樹木和植物 / Trees & Plantings



Honeylocust 树 [CID]
Honeylocust tree [CID]



Green Vase Zelkova 树 [CID]
Green Vase Zelkova tree [CID]



London Plane 树 [PSQ]
London Plane tree [PSQ]



特制铸铁花盆 [PSQ]
Custom cast iron planter [PSQ]



Autumn Brilliance Serviceberry 树 [针迹]
Autumn Brilliance Serviceberry tree [Stitch]



Wilshire 花盆 [针迹]
Wilshire Planter [Stitch]

休憩设备 / Furniture



Freesia 钢制长椅 [CID]
Freesia steel bench [CID]



特制单车架 [CID]
Custom bike rack [CID]



木制长椅 [PSQ]
Wooden bench [PSQ]



Sinus 座椅 [针迹]
Sinus seating [Stitch]



可移动休憩设备 [针迹]
Moveable furniture [Stitch]

艺术与寻路标示 / Art & Wayfinding



色彩缤纷的区域旗帜 [CID/PSQ]
Colorful/district banners [CID/PSQ]



雕塑性和悬挂艺术 [针迹]
Sculptural and overhead art [Stitch]



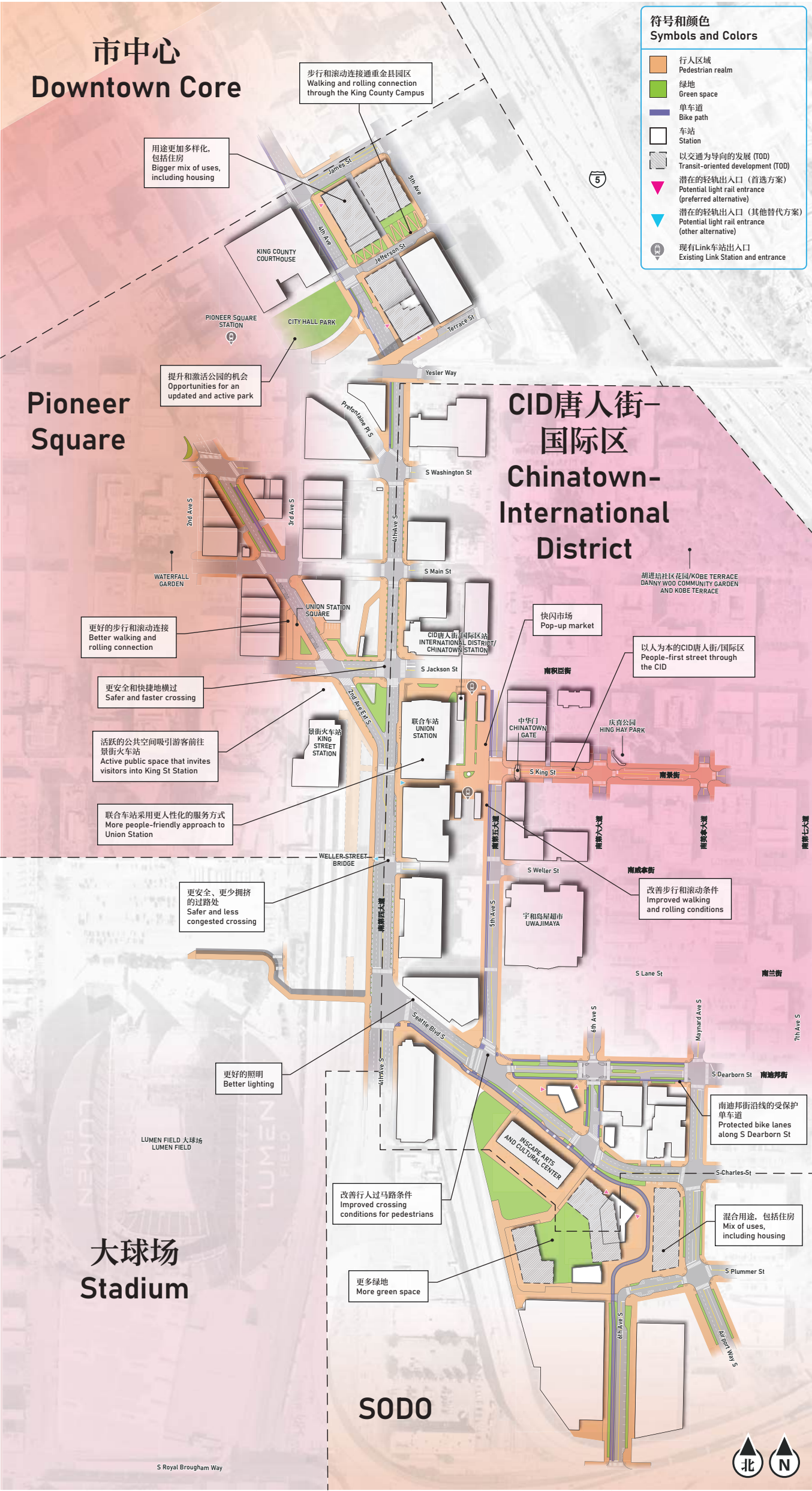
信息标示 [针迹]
Informational signage [Stitch]



绘制的十字路口 [针迹]
Painted intersections [Stitch]



广场街道 [针迹]
Plaza street [Stitch]



所展示的设计只是初步构想，该设计将随着持续的发展、分析及跨政府机构协作而有所调整。资金来源与具体实施责任尚待确定。Depicted designs are preliminary and subject to change with continued development, analysis, and interagency coordination. Funding and implementation responsibilities to be determined.

我们听到的意见 – 针迹焦点地区

WHAT WE HEARD – STITCH FOCUS AREA

此区域是以铁路进出西雅图市中心具历史象征的入口。时至今日，景街火车站仍提供区域与城际铁路服务，而联合车站座落于邻近CID唐人街/国际区轻轨服务。然而，尽管拥有这些历史悠久的建筑，该区域因道路设计、车辆运行模式及基础设施老化等因素，导致行人通行困难。

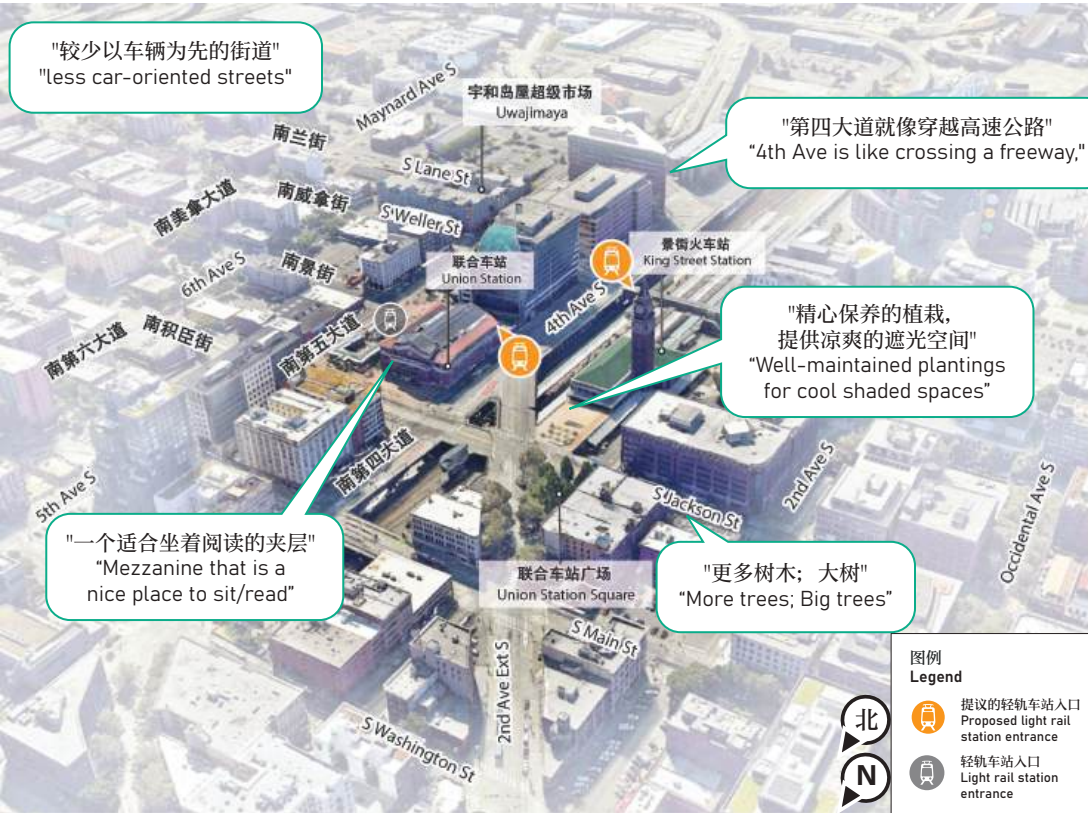
历来的社区规划均强调此区域需提升其安全性与城市设计，并深入分析了变革的措施。

在去年的社区对话中，我们听到对中央枢纽（Central Hub）区域的街道与公共空间进行变革性改造的广泛兴趣。重点改变其中之一，包括将2nd Ave Ext S，介于积臣街与南第四大道的之间的空间，改造为广场。

This area is the historic point of entry to downtown Seattle by train. Today, King Street Station still hosts active regional and intercity rail service, while Union Station sits next to light rail service at the International District/Chinatown Station. Despite the location of these beautiful historic buildings, the area is difficult to navigate due to a combination of roadway design, vehicle operation patterns, and aging infrastructure.

Numerous past community plans point out the need for safety improvements and better urban design in this area, but deeply analyzed the implications of making change here.

We heard universal interest in transformative changes to streets and public spaces in the Central Hub area during last year's community conversations. The centerpieces of this change include a plaza conversion of 2nd Ave Ext S between Jackson St and 4th Ave S.



从活动中选出的概念

Selected concepts from activity

社区期望进一步研究的选项

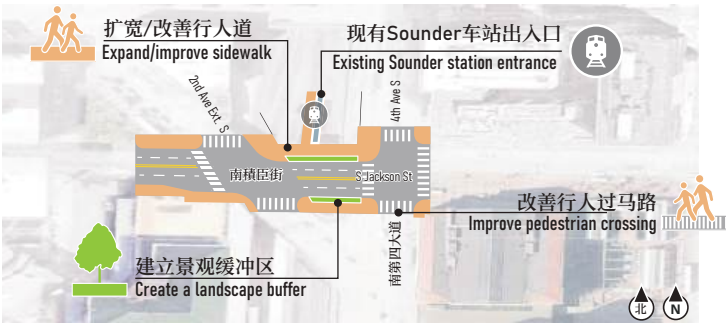
Community desired option for futher study

所有参与者均支持探讨该区域内十字路口、街道、车道、人行道的分配之改善方案，许多人表示希望调整交通信号，以提升横过马路的舒适度。

All participants favored exploring improvements to intersections and street cross section in this area; many shared a desire to see pedestrian-friendly signal adjustments.

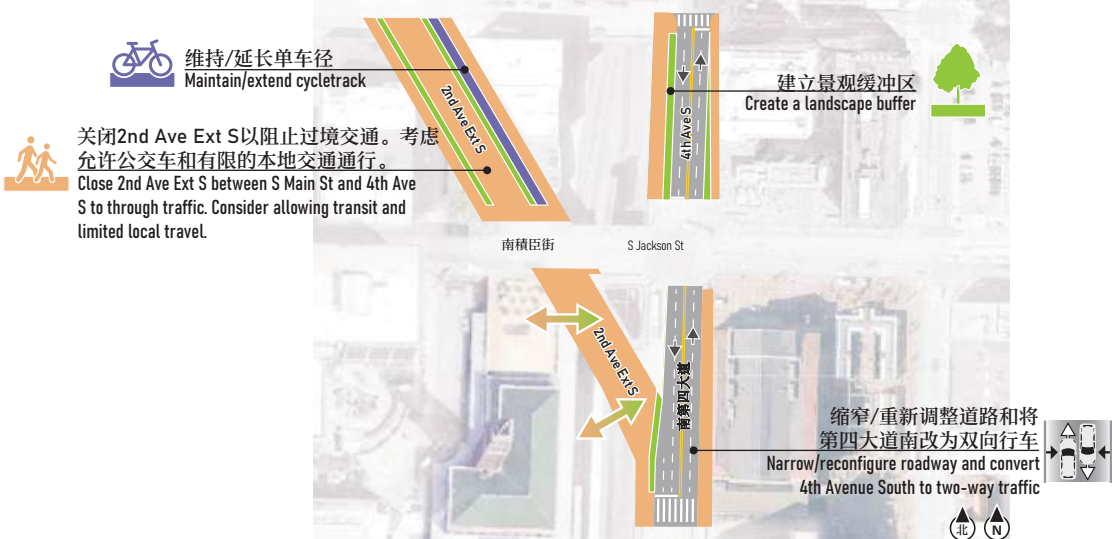
南积臣街的改善项目

S Jackson St Improvements



转型

Transformation



最受欢迎的特点卡

Top Feature Cards

研讨会 1

Workshop 1



所展示的设计只是初步构想，该设计将随着持续的发展、分析及跨政府机构协作而有所调整。资金来源与具体实施责任尚待确定。Depicted designs are preliminary and subject to change with continued development, analysis, and interagency coordination. Funding and implementation responsibilities to be determined.

南市中心枢纽针迹焦点地区

SOUTH DOWNTOWN HUB STITCH FOCUS AREA

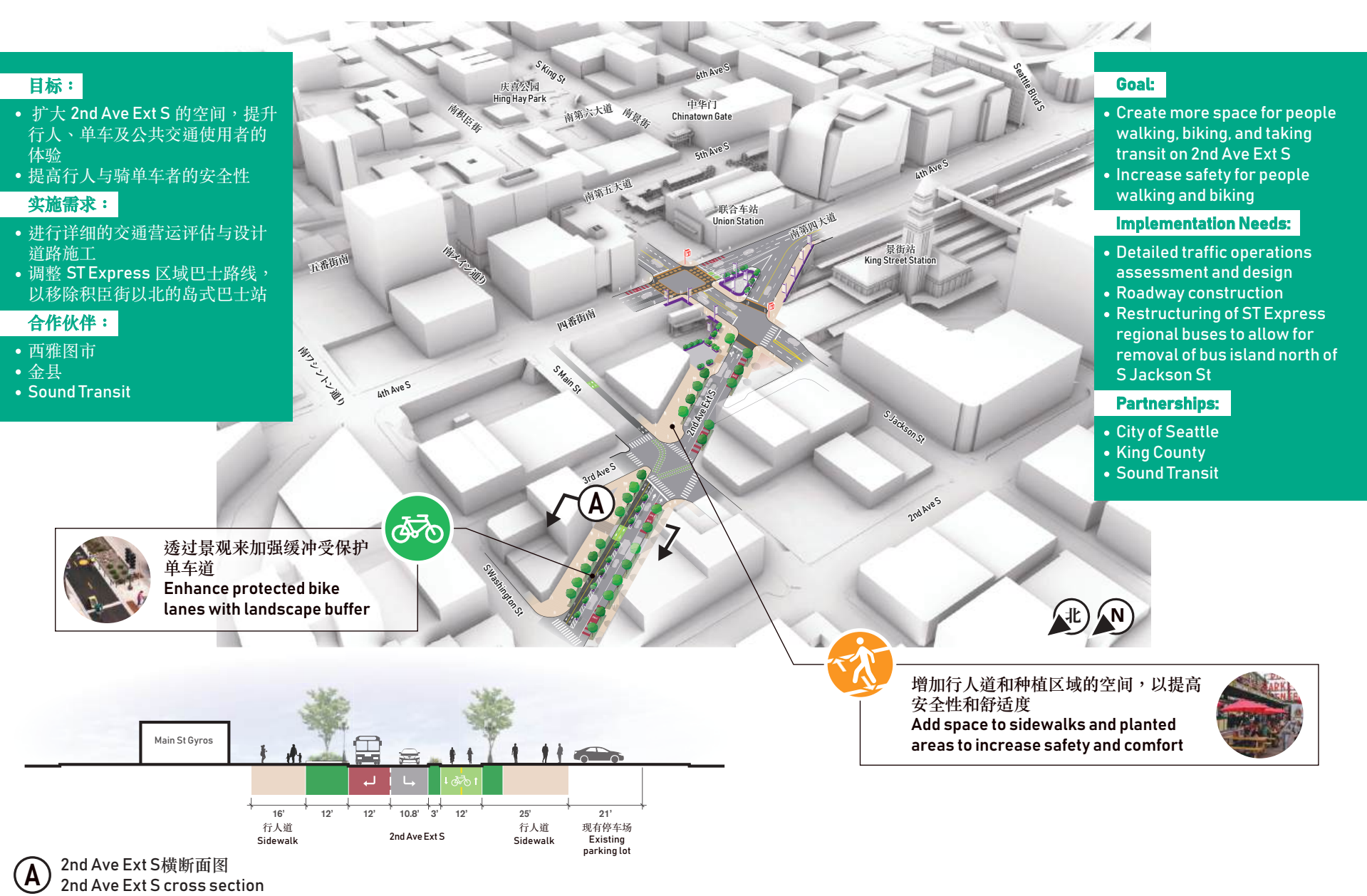
潜在的短期改善计划(5 年内)

Potential near term improvements (within 5 years)



潜在的后续改善计划(5 至 15 年)

Potential next steps improvements (5 to 15 years)



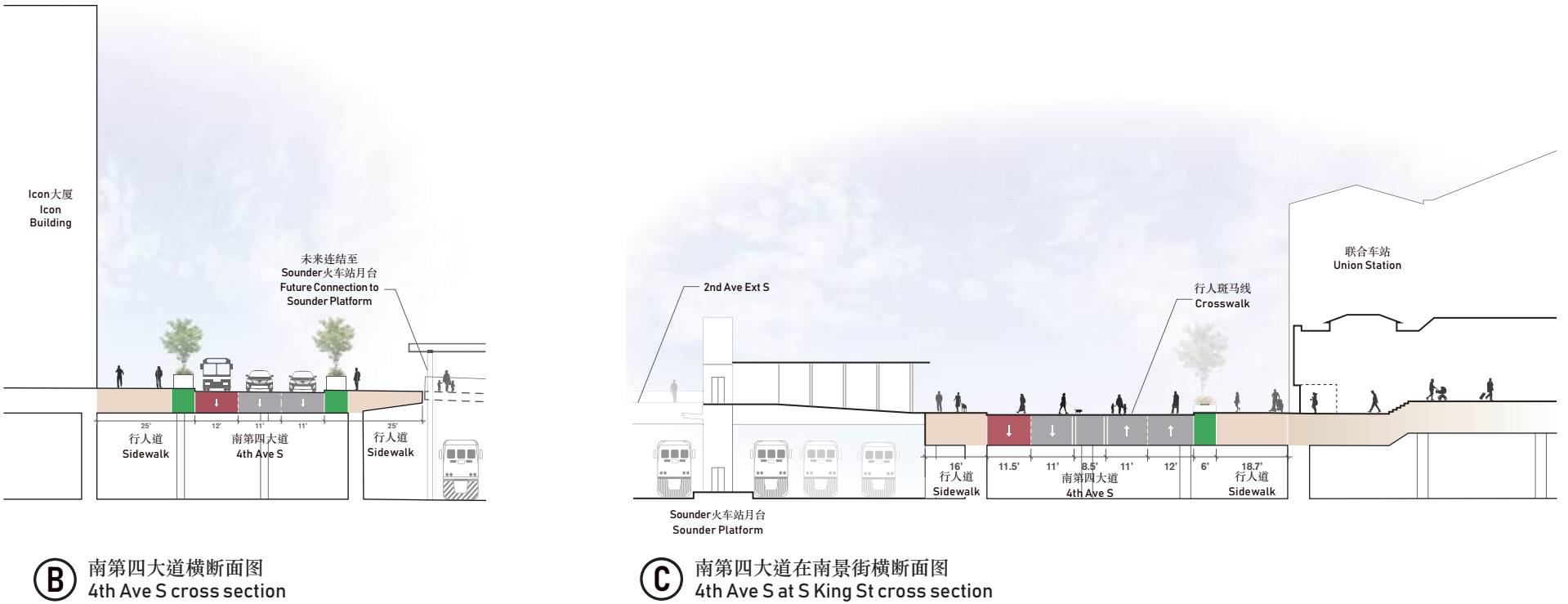
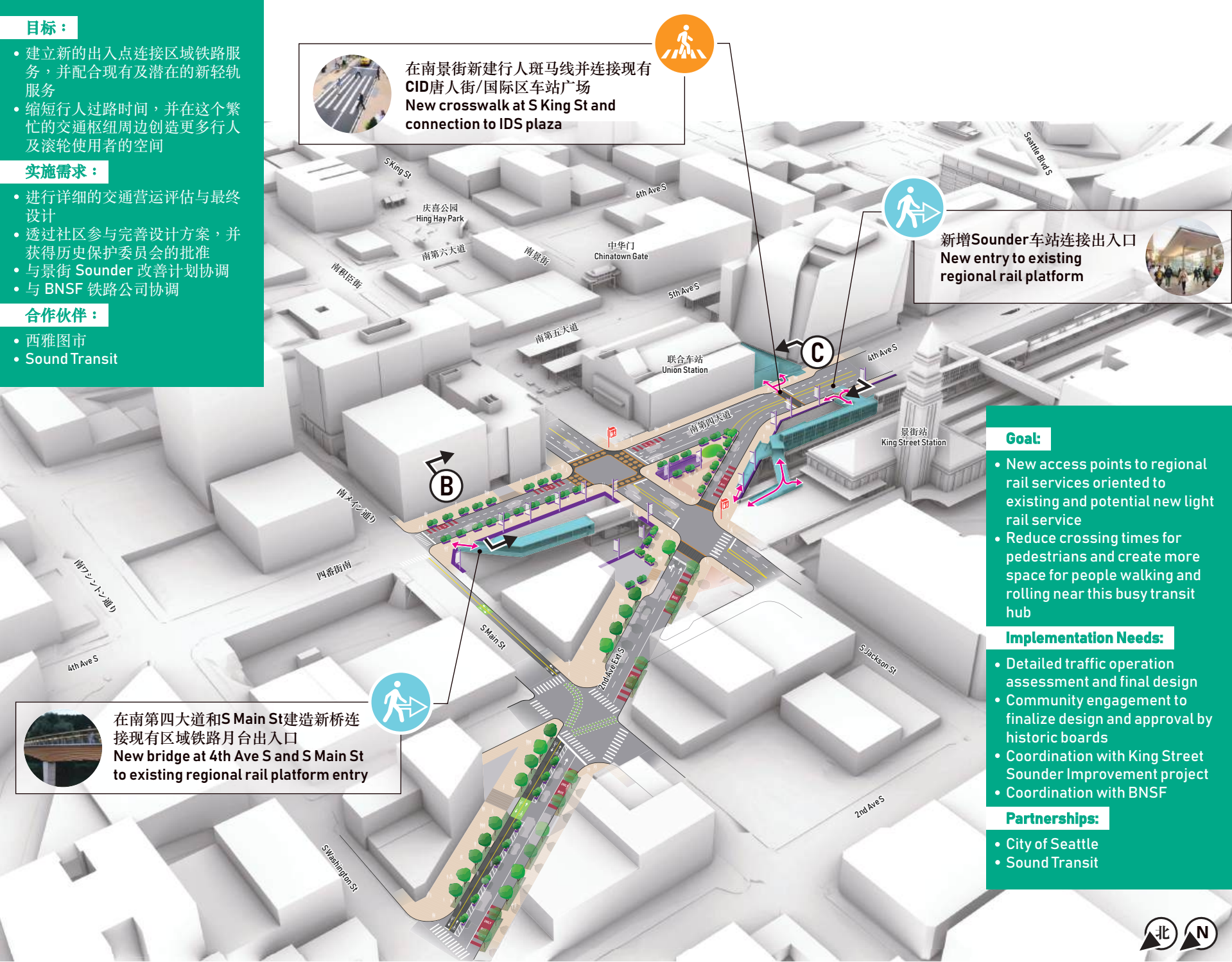
所展示的设计只是初步构想，该设计将随着持续的发展、分析及跨政府机构协作而有所调整。资金来源与具体实施责任尚待确定。 Depicted designs are preliminary and subject to change with continued development, analysis, and interagency coordination. Funding and implementation responsibilities to be determined.

南市中心枢纽针迹焦点地区

SOUTH DOWNTOWN HUB STITCH FOCUS AREA

潜在的综合愿景（首选愿景）

Potential comprehensive vision (Preferred)



所展示的设计只是初步构想，该设计将随着持续的发展、分析及跨政府机构协作而有所调整。资金来源与具体实施责任尚待确定。Depicted designs are preliminary and subject to change with continued development, analysis, and interagency coordination. Funding and implementation responsibilities to be determined.

南市中心枢纽针迹焦点地区

SOUTH DOWNTOWN HUB STITCH FOCUS AREA

进一步转型的机会与挑战

The opportunities and challenges of further transformation

在去年的社区对话中，我们听到人们对南部市中心枢纽缝结重点区，对道路与公共空间进行变革性改造的强烈兴趣。本展示板上的图像展现了这些变革的愿景。

然而，经过详细分析，我们总结了此区域内的多个物理上与运营上的挑战，以致推行该具变革性的改造难以实现。以下将详述这些挑战。

我们相信，许多相同的目标与效益—例如建立更紧密连结的社区，并提供更安全、更友善的过路体验—仍可透过上一个展示板所呈现的综合愿景来达成。我们将继续致力于这些目标，并持续探索能够实现卓越成果的方案。

We heard substantial interest in making transformative changes to streets and public spaces in the South Downtown Hub Stitch focus area during last year’s community conversations. The image on this board depicts **an aspirational future vision of these transformative changes.**

However, **after thorough analysis, we have concluded that numerous physical and operational challenges likely make the most transformative changes here impractical.** These are detailed below.

We believe that that many of the same benefits and goals – such as more connected neighborhoods with safer and more people-friendly crossings – can be realized with the proposed comprehensive vision depicted on the preceding board. We remain committed to these goals and are exploring ideas that can achieve great outcomes.

机遇

The opportunities

- 1

进一步减缓车流

若车辆交通减少，可探讨将南第四大道改为双向行车。

Further Traffic Calming

If vehicle traffic reduces, explore conversion of 4th Ave S to two-way traffic.
- 2

修复街道网络

若车辆交通减少，并且巴士路线与服务改变，可探讨重新调整 2nd Ave Ext S, 延长南积臣街以减少行人马路的需求。

Street Grid Repair

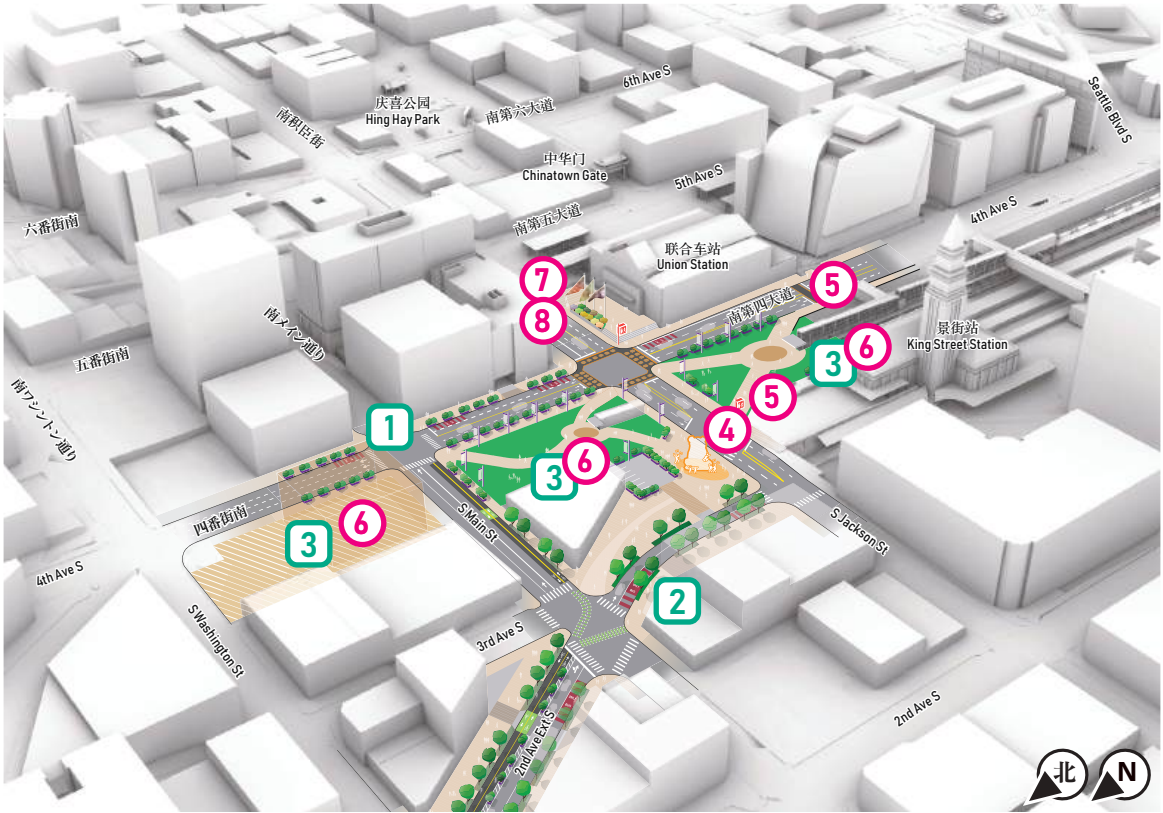
If vehicle traffic reduces and bus routing and service changes, explore realignment of 2nd Ave Ext S to help create longer blocks along S Jackson St with fewer crossings.
- 3

新增公共空间

若 2nd Ave Ext S 桥梁等结构需要更换，可考虑在铁路上方设置覆盖结构，以创造新的社区公共空间。

New Public Space

If structures like the 2nd Ave Ext S bridge need to be replaced, consider lidding over the railway to create new public space for the neighborhoods.



主要的挑战

Key Challenges

- 4

街道营运

将 2nd Ave Ext S 段关闭给车辆通行，将对所有道路使用者模式造成显著负面影响。这将影响行人、滚轮使用者、骑单车者、公共交通乘客及驾驶员，并且会在此街道范围外的许多街道带来交通挑战，例如交通改道及更多车辆在十字路口转向。

Street operations

Closing 2nd Ave Ext S to vehicles would have significant negative impacts for all modes of users. It impacts people walking and rolling, biking, taking transit, and driving, and creates transportation challenges – such as traffic diversion and more cars turning at intersections – for many blocks beyond this street.
- 5

桥梁结构

该区域的桥梁结构可能需要在未来进行更换或加固，以继续服务通行的公众。

Bridge structures

Bridge structures in this area may need to be replaced or retrofitted in the future to continue to serve the traveling public.
- 6

铁路问题

建设铁路上方的设施复杂且成本高昂。

Railway issues

Building over the railway is complicated and costly.
- 7

变革与干扰的平衡

社区希望进行变革，但也担心会带来更多的干扰。

Balancing change and disruption

The community wants change but worries about disruptions.
- 8

时间

维修、简单的连接，以及减少施工干扰是主要关注点，因此建议较大规模的变革应纳入长期规划中。

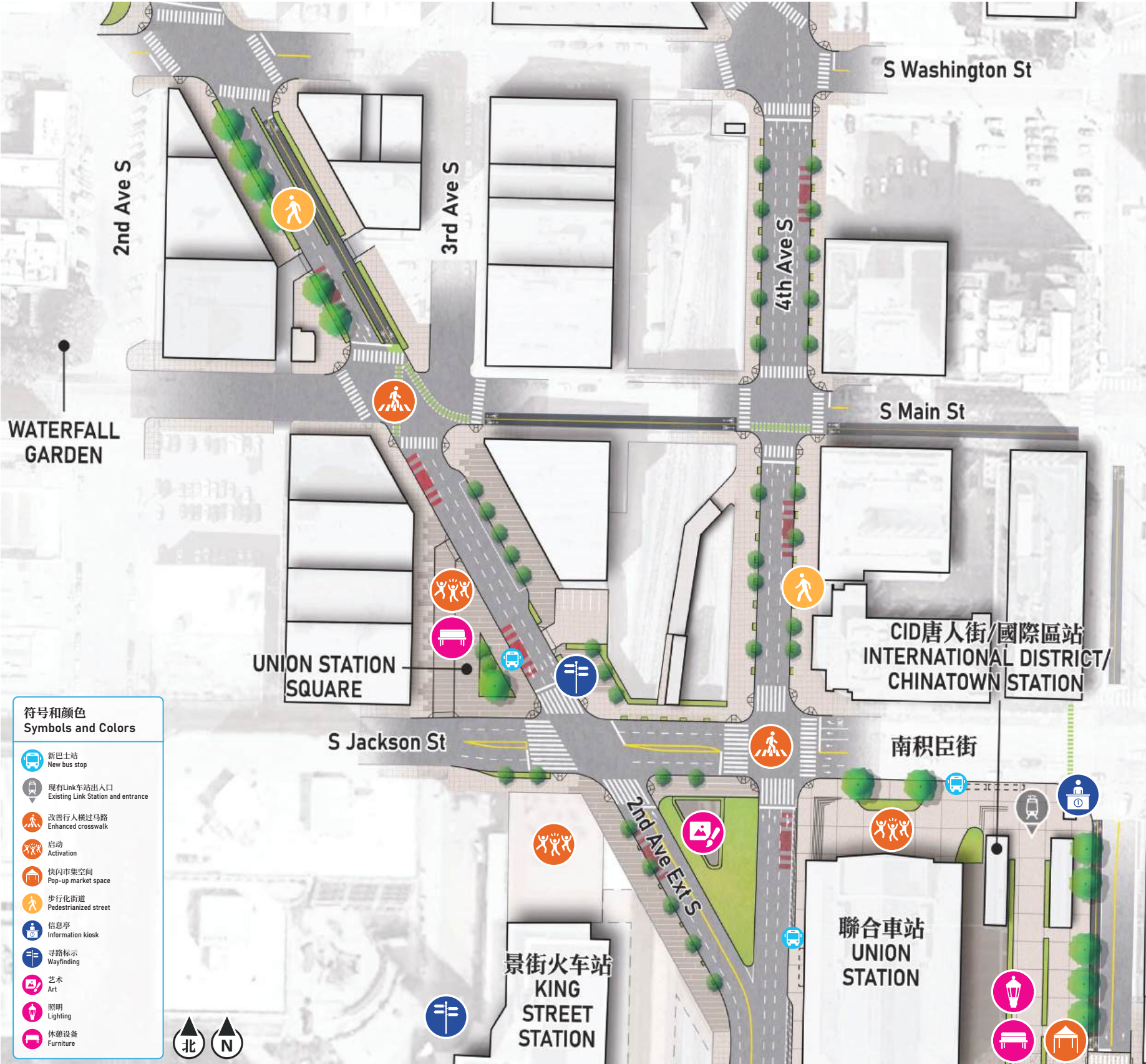
Timing

Maintenance, easy access, and minimizing construction disruptions are top concerns, suggesting big changes might be better in long-term future planning efforts.

所展示的设计只是初步构想，该设计将随着持续的发展、分析及跨政府机构协作而有所调整。资金来源与具体实施责任尚待确定。 Depicted designs are preliminary and subject to change with continued development, analysis, and interagency coordination. Funding and implementation responsibilities to be determined.

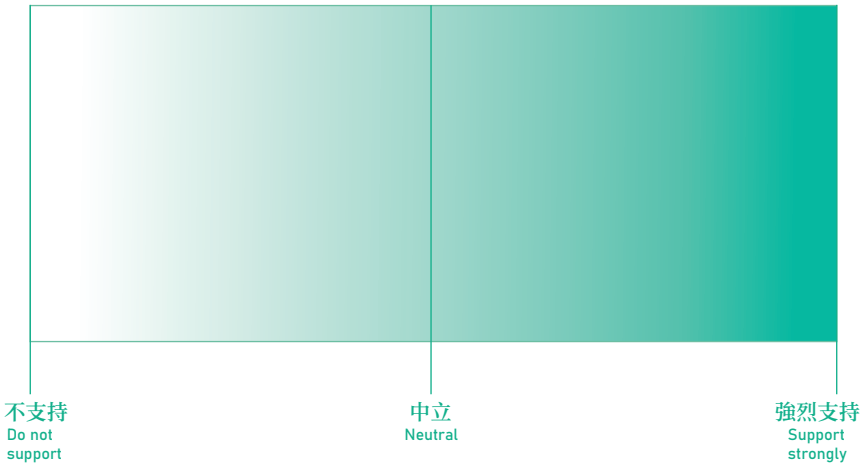
分享您的想法 – 缝合重点区域

SHARE YOUR THOUGHTS - STITCH FOCUS AREA



您对于休憩设备焦点区域所提议计划的支持程度如何评估？ 请在以下的刻度上放置一个点，颜色越深（越靠右）表示支持度越高，没有颜色（越靠左）表示支持度越低。

How would you rate your support of the proposed plan in the Stitch focus area? Place a dot on the scale below, with more color (towards the right) being the highest support and no color (towards the left) being the lowest support.



在规划推进的过程中，您希望看到哪些变更或改进？请说明您的理由。

What changes or improvements would you like to see as planning moves forward & why?

我们听到的意见 – 中央焦点地区

WHAT WE HEARD – CENTRAL FOCUS AREA

在去年社区对话中，我们听到了对中央枢纽 焦点内街道与公共空间进行变革性改造的普遍兴趣。

该地区受欢迎的想法建议包括：

- 翻新联合车站与CID唐人街/国际区车站广场，包括更新车站遮雨棚、铺设路面、景观设计及公共艺术。
- 扩大联合车站的重开范围，将其打造成一个服务社群的空间，设有室内聚会、展览和表演区域，以及咖啡厅。
- 升级景街，将其打造成一条从联合车站到庆喜公园的社区节庆街。

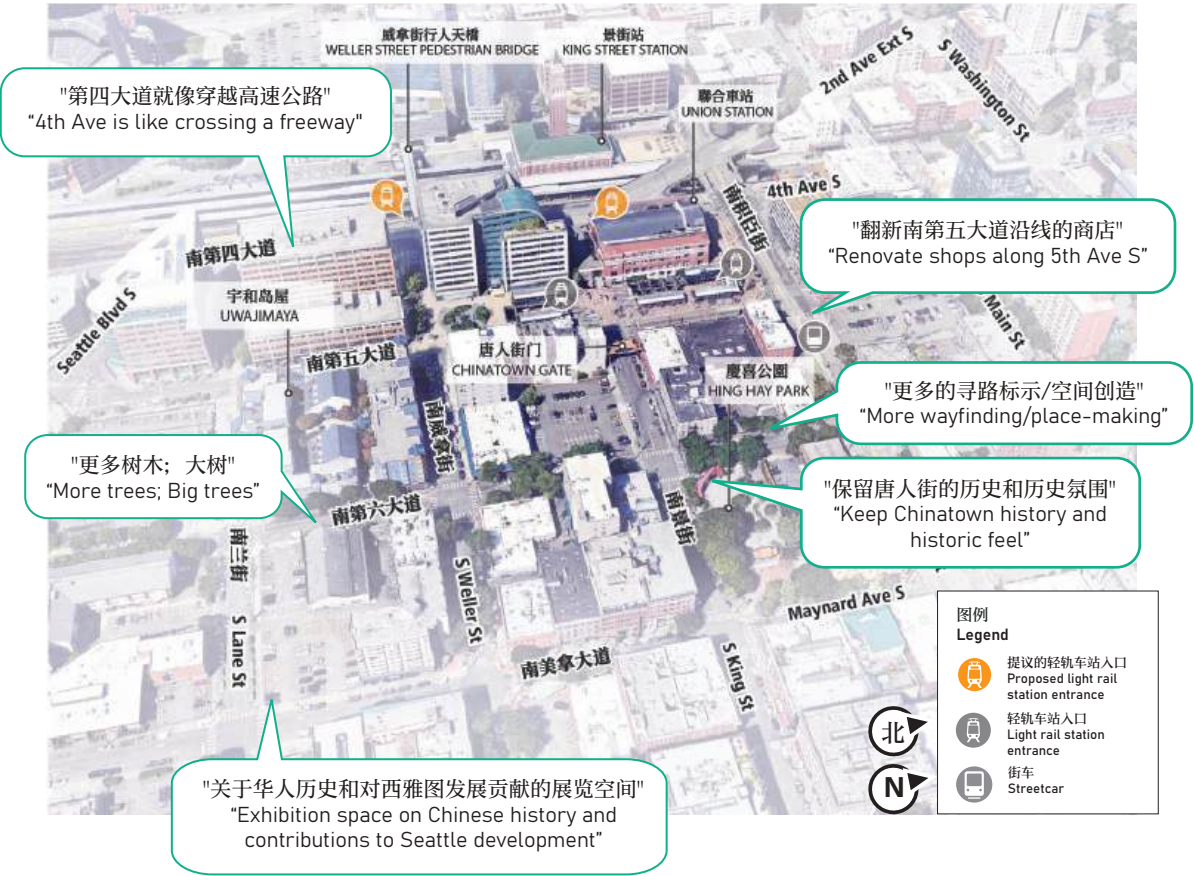
接下来的展示图将显示我们如何发展这些想法的设计概念。

We heard universal interest in transformative changes to streets and public spaces in the Central Hub focus area during last year's community conversations.

Popular ideas for improvements in this area included:

- Renovating the Union Station and International District/Chinatown Station Plazas, including updating station canopies, paving, landscaping, and public art.
- Expanding the reopening of Union Station into a community-serving space with areas for indoor gatherings, exhibitions, and performances, as well as a café.
- Upgrading King Street as a community festival street between Union Station to Hing Hay Park.

The next boards show how we have evolved design concepts for these ideas.



从活动中选出的概念

Selected concepts from activity

社区期望进一步研究的选项

Community desired option for futher study

所有参与者都支持探讨改善这地区的十字路口和过街设施；好多人都希望在改善的定义上加入有利于行人的讯号调整。

All participants favored exploring improvements to intersection crossings and street cross section in this area; many shared a desire to see signal adjustments favoring pedestrians added to the definition of these improvements.



来自研讨会一的街道改造和改进

Street conversions and improvements from Workshop 1

活化联合车站大厅，走廊，及车站低层来提供公众用途

Activate Union Station Great Hall, Concourse, and lower level with public-serving uses

概念来自/ Ideas from - Jackson Hub Plan (2019), Ballard Link Extension Further Studies (2023)



在南第四大道和南景街潜在的新行人斑马线

Potential new crossing of 4th Ave S at S King St

与合作机构建设连接南第四大道和广场的方法

Partner on a new outdoor connection from plaza to 4th Ave S

开放广场视线，改善铺地路面，并重新配置周围种植

Remove and replace canopies, reconfigure openings, upgrade paving and replace planters throughout plaza

最受欢迎的特点卡

Top Feature Cards

研讨会 2

Workshop 2



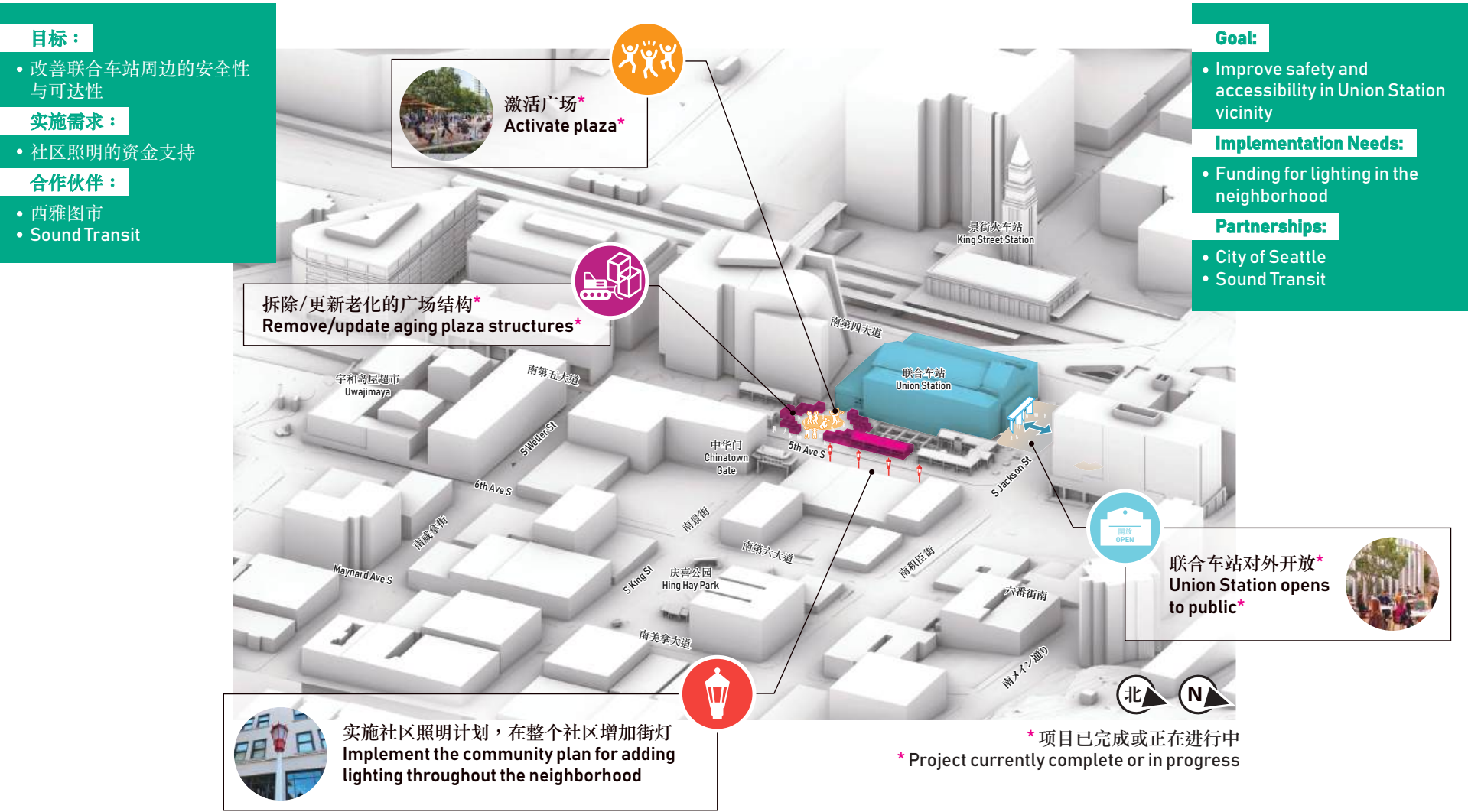
所展示的设计只是初步构想，该设计将随着持续的发展、分析及跨政府机构协作而有所调整。资金来源与具体实施责任尚待确定。Depicted designs are preliminary and subject to change with continued development, analysis, and interagency coordination. Funding and implementation responsibilities to be determined.

中央焦点地区

CENTRAL FOCUS AREA

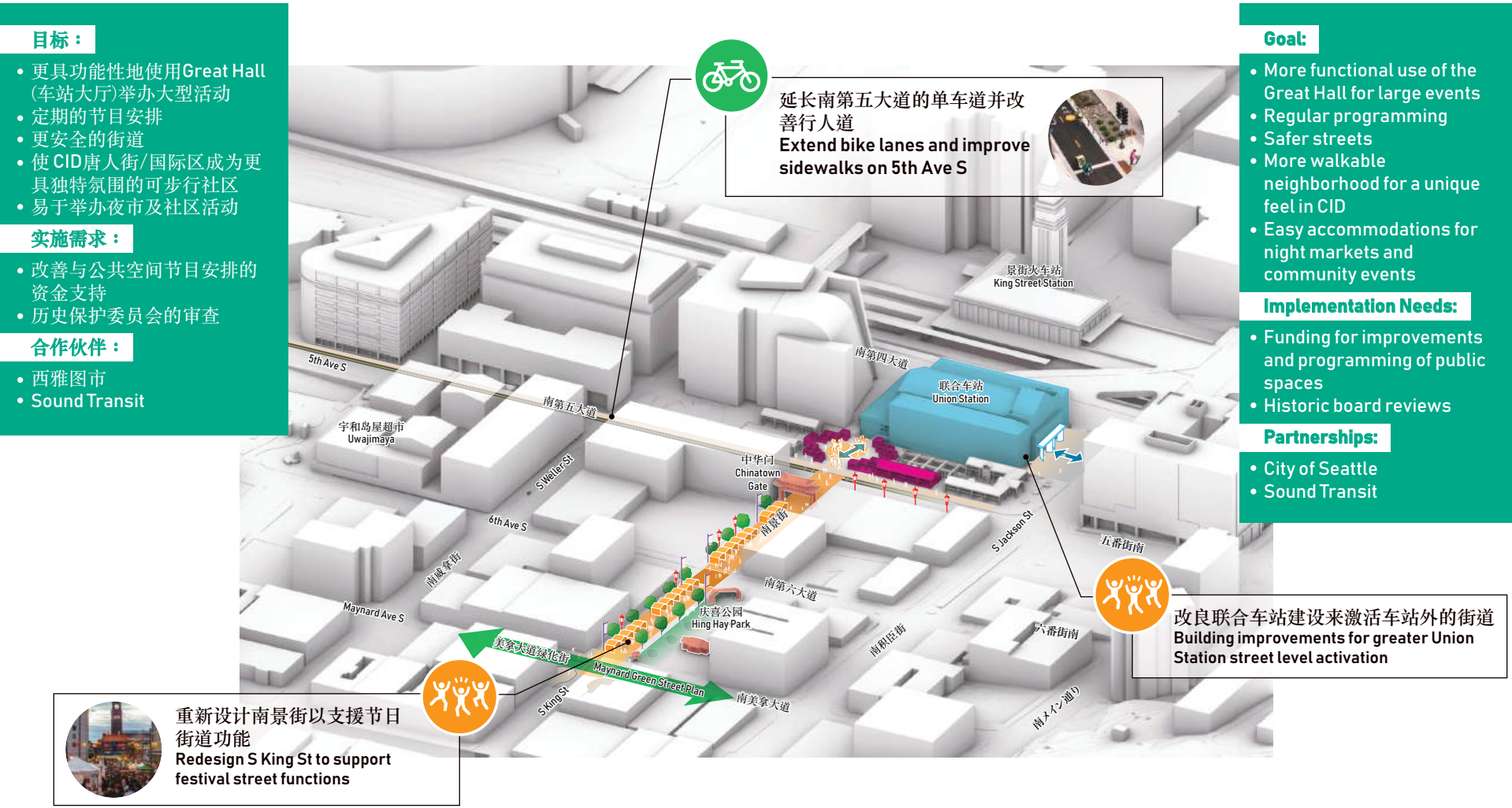
潜在的短期改善计划(5 年内)

Potential near term improvements (within 5 years)



潜在的后续改善计划(5 至 15 年)

Potential next steps improvements (5 to 15 years)



所展示的设计只是初步构想，该设计将随着持续的发展、分析及跨政府机构协作而有所调整。资金来源与具体实施责任尚待确定。 Depicted designs are preliminary and subject to change with continued development, analysis, and interagency coordination. Funding and implementation responsibilities to be determined.

中央焦点地区 CENTRAL FOCUS AREA

潜在的综合愿景(15年以上)
Potential comprehensive vision (15 years+)

目标：

- 在联合车站内提供更全面的社区活动规划
- 更安全、更易使用的广场
- 更安全、更易使用的车站出入口
- 提供更大启动广场的机会

实施需求：

- 联合车站升级的最终设计、资金和时间表，以改善货运通行并规划扩展的社区活动
- 单车道、街道改善和照明的最终设计、资金和时间表
- 评估现有结构及车站/隧道调整，确保之后不需要重大变动
- 规划好施工期间的干扰
- 获得历史保护委员会及其他主管机构的批准

合作伙伴：

- 西雅图市
- Sound Transit

打造大型艺术活动来激活广场
Create a large art and program
activation in plaza



改良联合车站建设来提供更广泛的低层激活
Building improvements for greater
Union Station lower level activation



广场种植和改善街道上落
Plaza plantings and grade improvements



Goal:

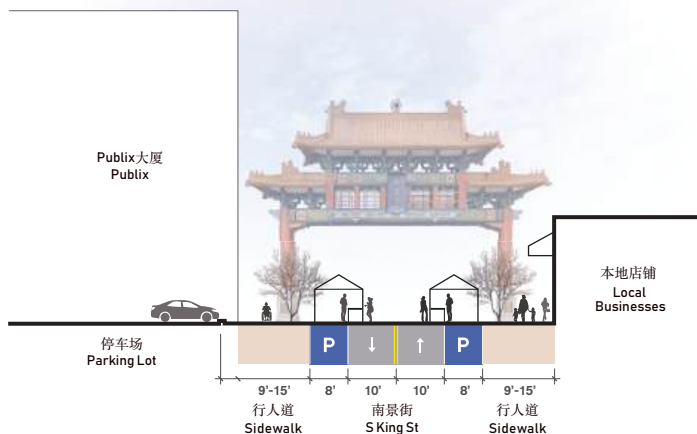
- More comprehensive community programming in Union Station
- Safer, easier to use plazas
- Safer, easier to use station entries
- Larger activation possibilities in the plaza

Implementation Needs:

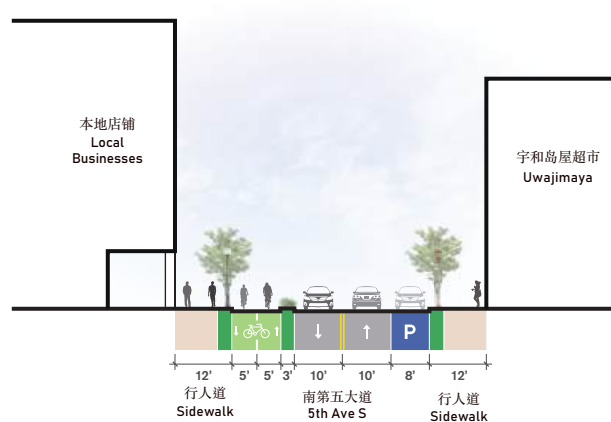
- Final design, funding, and schedule for Union Station upgrades for better freight access and an operations plan for expanded community programming
- Final design, funding, and schedule for bike lanes, street improvements, and lighting
- Assessment of existing structures and station/tunnel adjustments to ensure no substantial changes are needed
- Planning for construction disruption
- Approval from historic boards and other authorities

Partnerships:

- City of Seattle
- Sound Transit



A 南景街(节庆街)横断面图
S King St (Festival Street) cross section



B 南第五大道横断面图
5th Ave S cross section

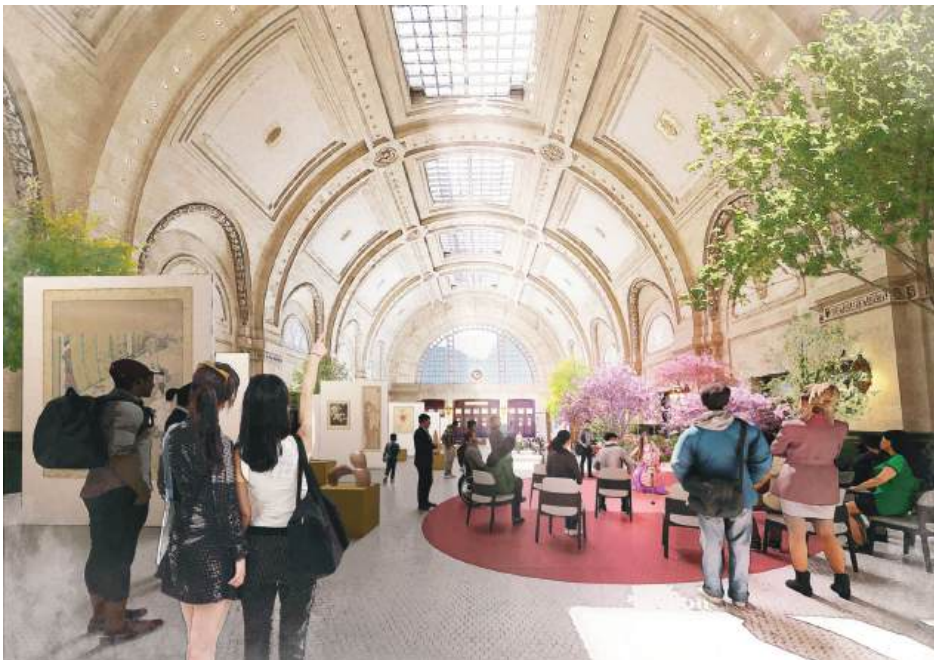
所展示的设计只是初步构想，该设计将随着持续的发展、分析及跨政府机构协作而有所调整。资金来源与具体实施责任尚待确定。 Depicted designs are preliminary and subject to change with continued development, analysis, and interagency coordination. Funding and implementation responsibilities to be determined.

中央焦点地区 – 联合车站

CENTRAL FOCUS AREA - UNION STATION

在疫情爆发前的几年，社区居民一直呼吁启用联合车站，此举启发于全国其他历史悠久火车站改建为公共空间的模式，带来更优质的公众活动项目。我们向社区征询了他们希望在联合车站看到哪些用途，并且在2024年社区研讨会中听取的意见为启用研究提供了方向。

For several years prior to the pandemic, community voices have called for activation of Union Station, inspired by other models of adaptive reuse of historic train stations around the country that feature higher levels of public-facing programming. We asked community about the kinds of uses they would like to see in Union Station, and the activation study takes direction from what we heard during the community Workshops.



最受欢迎的特点卡

Top Feature Cards

研讨会1
Workshop 1

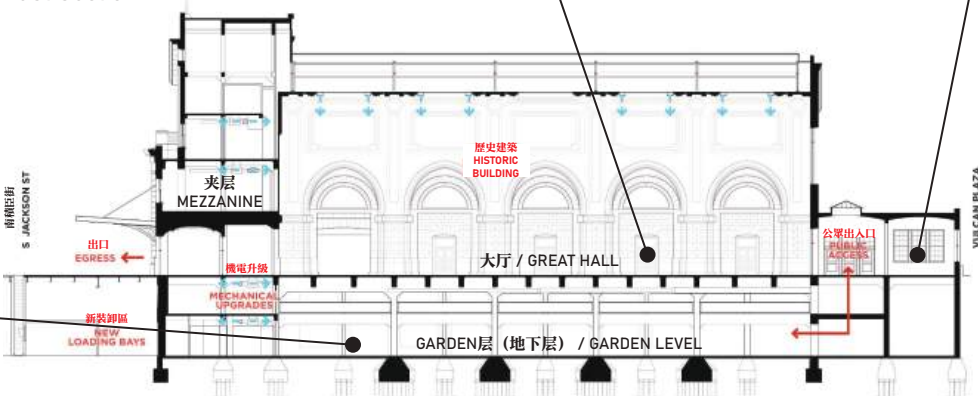


大厅灵活的社区空间
Great Hall flexible community space



Garden层（地下层）- 快闪式活动空间
Garden Level - pop up event space

东段横断面图
East Section



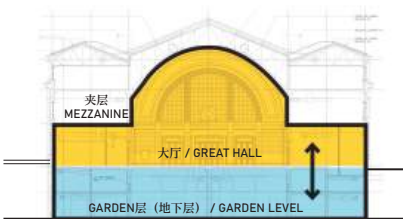
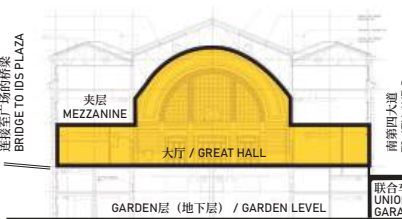
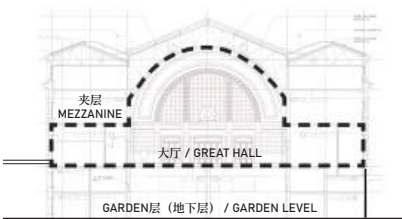
大厅咖啡厅和通道
Concourse cafe and pass-through



联合车站 – 随着时间演变的激活

Union Station activation over time

南段横断面图
South Section



第一阶段
Phase 1

重新开放大厅和洗手间供公众使用
- 于 2024 年夏季完成
Reopen Great Hall and restrooms to the public
- completed Summer 2024

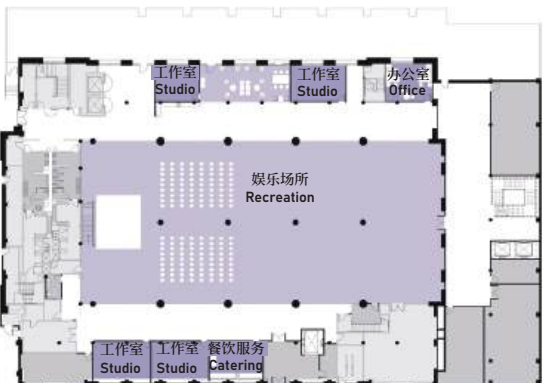
第二阶段
Phase 2

建筑改进，包括卸货区和通道的改善，以及运营计划和人员配置 - 预计需要 5 至 15 年完成
Building improvements to loading and access as well as operational plan and staffing - anticipated 5-15 years

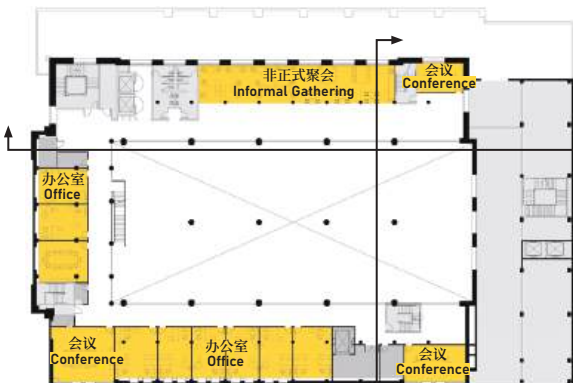
第三阶段
Phase 3

建筑机电升级，以及进一步的通道和室内改善，以启用下层空间供社区使用 - 预期未来愿景为 15 年以上。
Building mechanical upgrades and further access and interiors improvements to activate the lower levels for community use - anticipated future vision 15+ years.

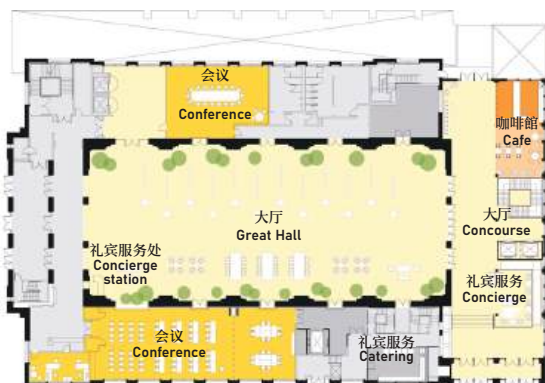
时间
Time



平面图
Garden Level Plan



夹层平面图
Mezzanine Plan



大厅平面图
Great Hall Plan

所展示的设计只是初步构想，该设计将随着持续的发展、分析及跨政府机构协作而有所调整。资金来源与具体实施责任尚待确定。
Depicted designs are preliminary and subject to change with continued development, analysis, and interagency coordination. Funding and implementation responsibilities to be determined.

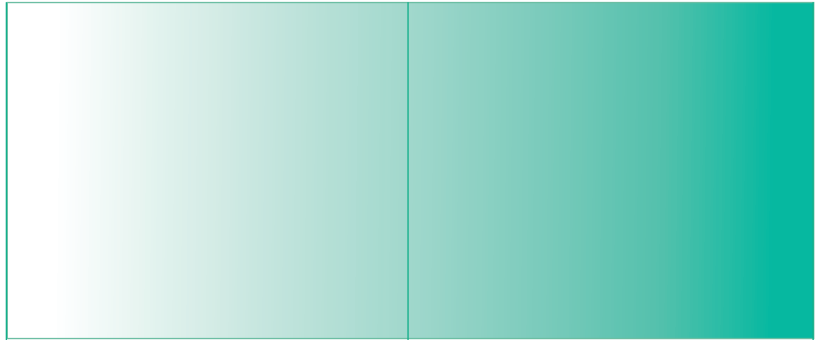
分享您的想法 – 中央焦點地區

SHARE YOUR THOUGHTS - CENTRAL FOCUS AREA



您對於中央樞紐焦點區域所提議計劃的支持程度如何評估？請在以下的刻度上放置一個點，顏色越深（越靠右）表示支持度越高，沒有顏色（越靠左）表示支持度越低。

How would you rate your support of the proposed plan in the Central hub focus area? Place a dot on the scale below, with more color (towards the right) being the highest support and no color (towards the left) being the lowest support.



不支持
Do not support

中立
Neutral

強烈支持
Support strongly

在規劃推進的過程中您希望看到哪些變更或改進？請說明您的理由。

What changes or improvements would you like to see as planning moves forward & why?

我们听到的意见 – 南焦点地区

WHAT WE HEARD – SOUTH FOCUS AREA

距离联合车站三个街口以南，是前美国移民局和鉴定所（俗称INS大楼），这座历史悠久的建筑在20世纪曾是移民进入西雅图和美国的处理及拘留中心。现在，这座建筑是INSCAPE艺术文化中心的所在地，位于CID唐人街/国际区的边界，但由繁忙的南迪邦街与该区域分隔开来。

过往数个的社区规划中，都曾设想在南迪邦街以南地区实现更多的土地利用与可负担住房，并改善南迪邦街的景观条件。随着展望中的新轻轨站可为CID唐人街/国际区及球场外围带来服务，这些构想变得更具意义。

Just three blocks south of Union Station is the former U.S. Immigrant Station and Assay Office (commonly called the INS building), with a complicated history as a processing and detention center for immigrants to Seattle and the United States during the 20th Century. This historic building, now home to the INSCAPE hub for arts and culture, sits on the boundary of the Chinatown-International District (CID), yet is separated from the district by busy S Dearborn St.

Several past community plans have envisioned more active land uses and affordable housing south of S Dearborn St, as well as improved streetscape conditions on S Dearborn St itself. This gains further relevance with the prospect of a new transit station serving the CID and the stadiums beyond.



从活动中选出的概念

Selected concepts from activity

在去年的社区对话中，我们听到了对该区域街道和公共空间进行变革的强烈关注。提升该区域受欢迎的想法包括：

- 扩宽南迪邦街的行人道并增加绿化带。
- 缩短街道过路时间，提升第五大道和第六大道之间的行人安全。
- 调整Seattle Blvd S与南美拿大道的布局，以提高安全性并让该区域感觉更加连接。
- 探索在提议的车站上方兴建新建筑的机会，这些建筑将包括各种收入层次人群可负担的住房以及反映并支持CID唐人街/国际区社区的商业空间、办公室和其他商店。
- 建设一座新的行人天桥，跨越BNSF铁路轨道，连接球场与Pioneer Square, CID唐人街/国际区，以及未来位于Seattle Blvd S的Sunder火车站出入口。

We heard strong interest in transformative changes to streets and public spaces in this area during last year's community conversations.

Popular ideas for improvements in this area included:

- Widening sidewalks and adding greenery along S Dearborn S.
- Narrow street crossings to improve safety between 5th and 6th Avenues.
- Adjusting the street layout at Seattle Blvd and S Maynard St to improve safety and make the area feel more connected.
- Exploring opportunities for new buildings over the proposed stations that would include both housing — affordable for people across different income levels — and spaces for businesses, offices, and other shops that reflect and support the CID community.
- Building a new pedestrian bridge over the BNSF train tracks to create connections between the Stadium District and Pioneer Square, CID, and a future Sounder access point at Seattle Blvd S.

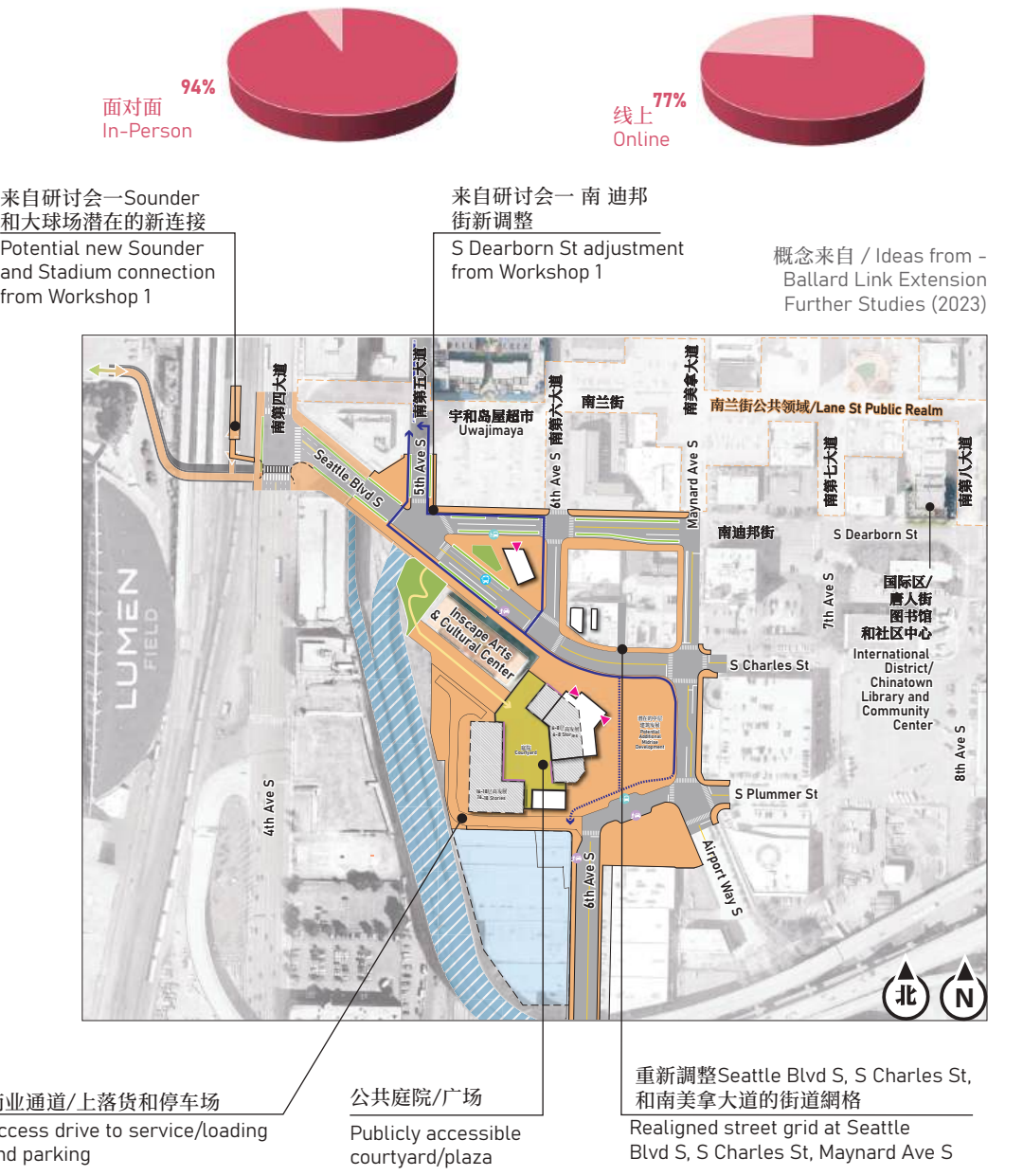
The next boards show how we have evolved design concepts for these ideas.

社区期望进一步研究的选项

Community desired option for further study

所有参与者都支持探讨改善这地区的十字路口和过街设施；好多人都希望在改善的定义上加入有利于行人的讯号调整。

All participants favored exploring improvements to intersection crossings and street cross section in this area; many shared a desire to see signal adjustments favoring pedestrians added to the definition of these improvements.



最受欢迎的特点卡

Top Feature Cards



所展示的设计只是初步构想，该设计将随着持续的发展、分析及跨政府机构协作而有所调整。资金来源与具体实施责任尚待确定。Depicted designs are preliminary and subject to change with continued development, analysis, and interagency coordination. Funding and implementation responsibilities to be determined.

南焦点地区

SOUTH FOCUS AREA

潜在的短期改善计划(5 年内)

Potential near term improvements (within 5 years)

目标:

- 提升街道与人行道的安全性

实施需求:

- 获取人行道改善及照明设施的资金

合作伙伴:

- 西雅图市

改善社区行人道，使行人路面更安全
Improve sidewalks in the neighborhood for safer walking

实施社区照明计划，在整个社区增加街灯
Implement the community plan for adding lighting throughout the

Goal:

- Safer streets and sidewalks

Implementation Needs:

- Funding for sidewalk improvements and lighting

Partnerships:

- City of Seattle

潜在的后续改善计划(5 至 15 年)

Potential next steps improvements (5 to 15 years)

目标:

- 提升街道与人行道的安全性

实施需求:

- 获取升级单车道的资金

合作伙伴:

- 西雅图市
- Sound Transit

关闭南第五大道的分隔右转车道，以提供更好的行人/单车通道
Close separated right turn lane on 5th Ave S for better ped/bike crossings

在轻轨建设之前/期间在南迪邦街添加受保护的单车道
Add protected bike lanes on S Dearborn St before/during light rail

Goal:

- Safer streets and sidewalks

Implementation Needs:

- Funding for upgraded bike lanes

Partnerships:

- City of Seattle
- Sound Transit

所展示的设计只是初步构想，该设计将随着持续的发展、分析及跨政府机构协作而有所调整。资金来源与具体实施责任尚待确定。Depicted designs are preliminary and subject to change with continued development, analysis, and interagency coordination. Funding and implementation responsibilities to be determined.

南焦点地区
SOUTH FOCUS AREA

潜在的综合愿景(15年以上)
Potential Comprehensive vision (15 years+)

目标:

- 鼓励以社区为主导的开发，与 CID 唐人街 / 国际区相辅相成
- 打造更以行人与单车为主导的社区延伸区域
- 改善东西向的连接性

实施需求:

- BLE决策将影响该区域的发展格局
- 景街车站改善计划将与任何横跨铁路的行人通道协调
- 配合西雅图市工业用地政策

合作伙伴:

- 西雅图市
- Sound Transit
- 私有和以社区主导的发展商
- BNSF 铁路公司
- Lumen Field 球场

公平合理以交通为导向的发展
Equitable Transit Oriented Development



在Pioneer Square和大球场区域建立一座新的行人/单车桥道

New pedestrian/bike crossing to Pioneer Square and Stadium District



开放且欢迎大众的新轻轨站出入口
Open and inviting new light rail
station entry



**重新调整Seattle Blvd S以修复通道
网络并支持完整社区的开发**
**Realign Seattle Blvd S to repair the
grid and support development of a
complete neighborhood**

Goal:

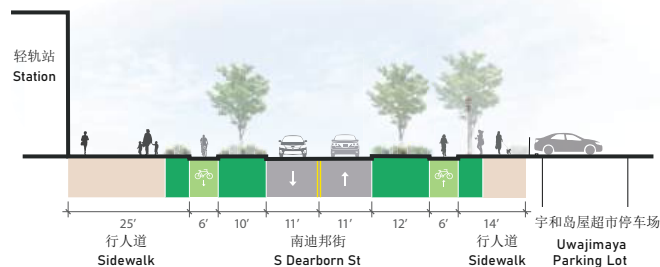
- Encourage community-led development that complements CID
- Create a more pedestrian and bike-oriented extension of the neighborhood
- Create a better east/west connection

Implementation Needs:

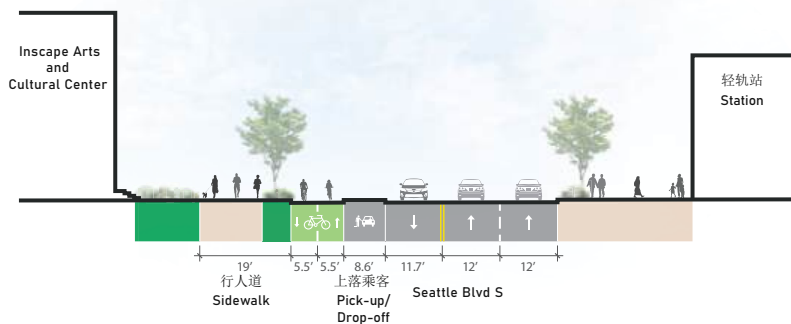
- BLE decision will influence the shape of development in this area
- King Street Station Improvements project will coordinate with any pedestrian crossing of the railway
- Aligning with City policy on preserving limited City industrial lands policy


Partnerships:

- City of Seattle
- Sound Transit
- Private and community-based developers
- BNSF
- Lumen Field



A 南迪邦街横断面图
S Dearborn St cross section




 Seattle Blvd S横断面图
 Seattle Blvd S cross section

所展示的设计只是初步构想，该设计将随着持续的发展、分析及跨政府机构协作而有所调整。资金来源与具体实施责任尚待确定。 Depicted designs are preliminary and subject to change with continued development, analysis, and interagency coordination. Funding and implementation responsibilities to be determined.

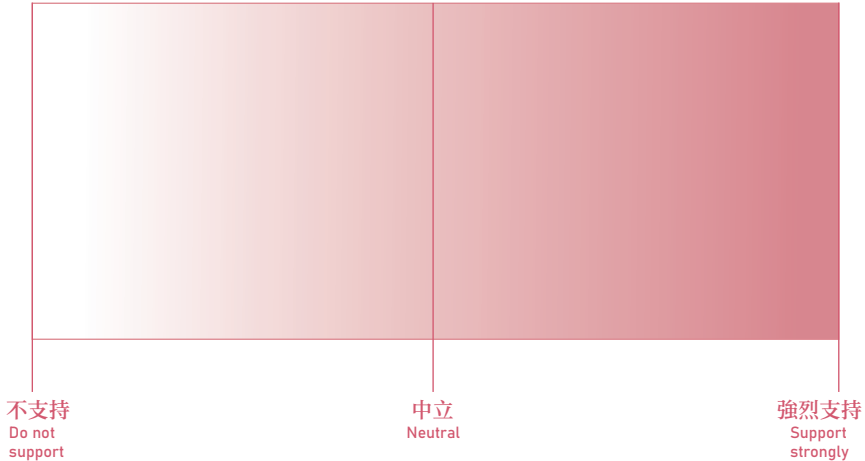
分享您的想法 – 南焦点地区

SHARE YOUR THOUGHTS - SOUTH FOCUS AREA



您对于南部枢纽焦点区域所提议计划的支持程度如何评估？请在以下的刻度上放置一个点，颜色越深（越靠右）表示支持度越高，没有颜色（越靠左）表示支持度越低。

How would you rate your support of the proposed plan in the South hub focus area? Place a dot on the scale below, with more color (towards the right) being the highest support and no color (towards the left) being the lowest support.



在规划推进的过程中，您希望看到哪些变更或改进？请说明您的理由。

What changes or improvements would you like to see as planning moves forward & why?

所展示的设计只是初步构想，该设计将随着持续的发展、分析及跨政府机构协作而有所调整。资金来源与具体实施责任尚待确定。 Depicted designs are preliminary and subject to change with continued development, analysis, and interagency coordination. Funding and implementation responsibilities to be determined.

我们听到的意见 – 北焦点地区

WHAT WE HEARD – NORTH FOCUS AREA

随着 COVID-19 疫情后，上办下办生活的日常节奏持续受到影响，加上服务提供方式的转变，金县Civic中心内的许多建筑物未能充分利用，功能逐渐过时，或面临高昂且可能难以承担的保养与复修成本。金县Civic中心总体规划提出对该区域的新开发与土地利用方案，以增加住房、就业机会及其他公共服务。

With continued disruption of the daily rhythm of office life following the COVID-19 pandemic, and given new approaches to delivering services, many of the buildings that make up the King County Civic Campus are underutilized, functionally obsolete, or are facing costly maintenance and repairs that may be financially unsustainable. The King County Civic Campus Master Plan proposes new development, and land uses in this area that add housing, employment, and other services.

从活动中选出的概念

Selected concepts from activity

提升该区域受欢迎的想法包括：

- 扩宽南第四大道人行道，并在拟建的 Midtown Station 站与市政厅公园之间设置抬高式过路通道，以提升行人安全与通行便利性。
- 在重建并缩窄的 Jefferson St（第四至第五大道之间）设置公共阶梯（又称公共登山道）。
- 探索兴建新建筑的可能性，提供不同收入阶层可负担的住房，并于街道层设置商店与企业空间，以促进社区活力与经济发展。

接下来的展示图将呈现我们如何发展这些设计概念。

Popular ideas for improvements in this area included

- Widening sidewalks along 4th Ave S and adding a raised crossing on 4th Ave S from the proposed Midtown Station site to City Hall Park.
- Creating a public staircase (also known as a public hill climb) along a rebuilt and narrowed Jefferson St (between 4th and 5th Avenues).
- Exploring opportunities for new buildings that would include both housing — affordable for people across different income levels — and street-level shops and businesses.

The next boards show how we have evolved initial design concepts for these ideas.

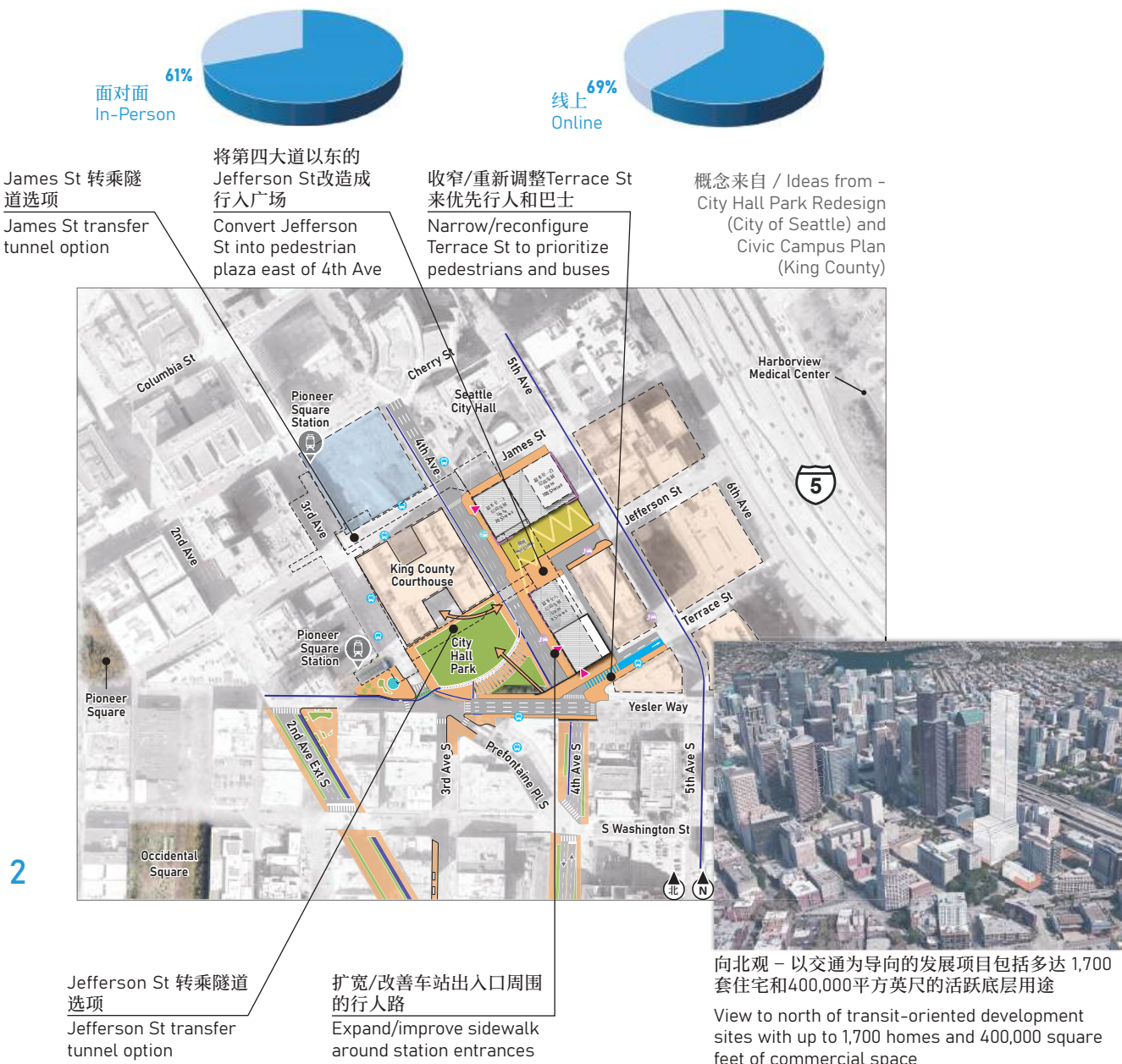


社区期望进一步研究的选项

Community desired option for further study

所有参与者都支持探讨改善这地区的十字路口和过街设施；好多人都希望在改善的定义上加入有利于行人的讯号调整。

All participants favored exploring improvements to intersection crossings and street cross section in this area; many shared a desire to see signal adjustments favoring pedestrians added to the definition of these improvements.



最受欢迎的特点卡

Top Feature Cards

研讨会 2

Workshop 2



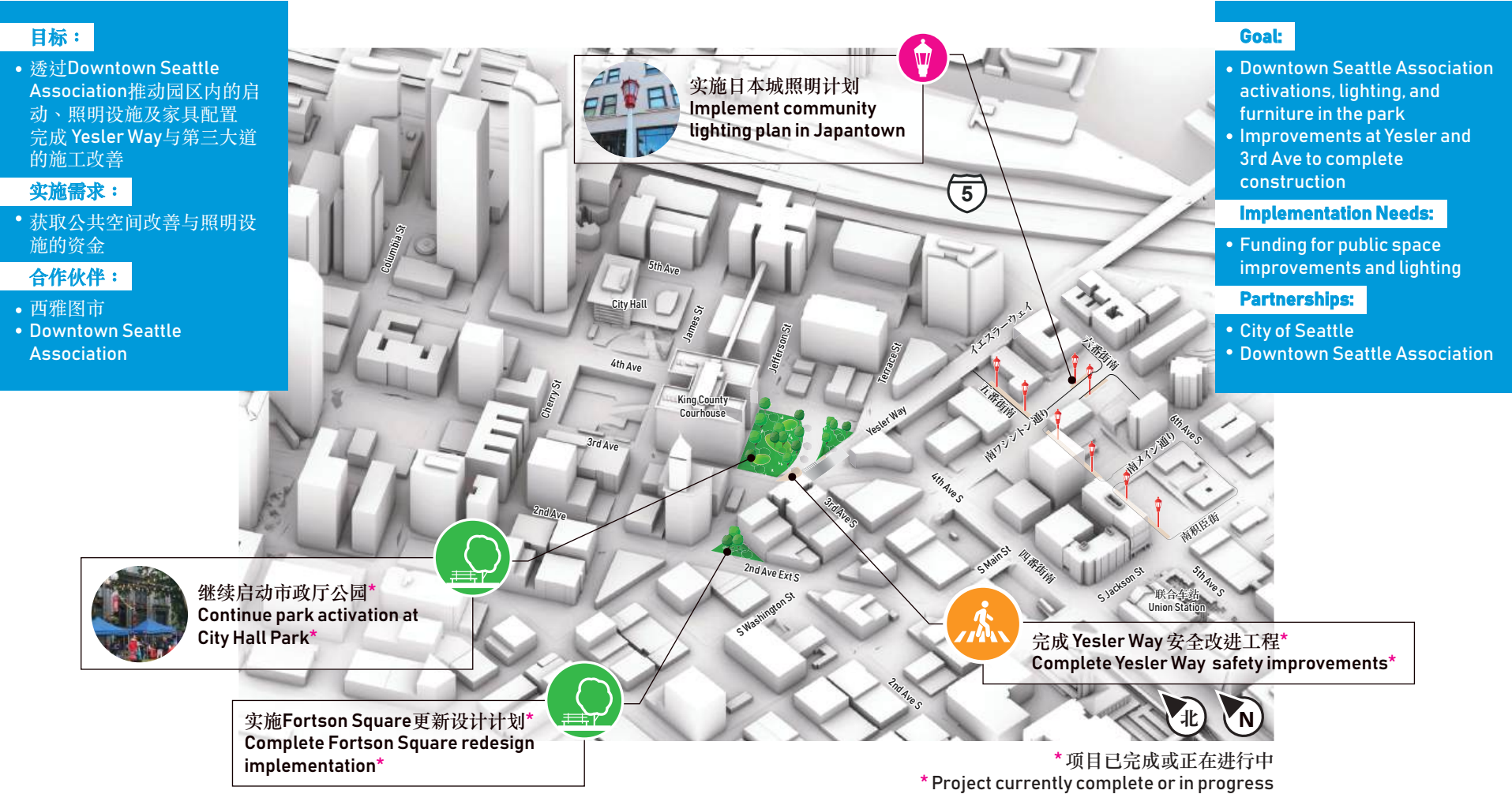
所展示的设计只是初步构想，该设计将随着持续的发展、分析及跨政府机构协作而有所调整。资金来源与具体实施责任尚待确定。 Depicted designs are preliminary and subject to change with continued development, analysis, and interagency coordination. Funding and implementation responsibilities to be determined.

北焦点地区

NORTH FOCUS AREA

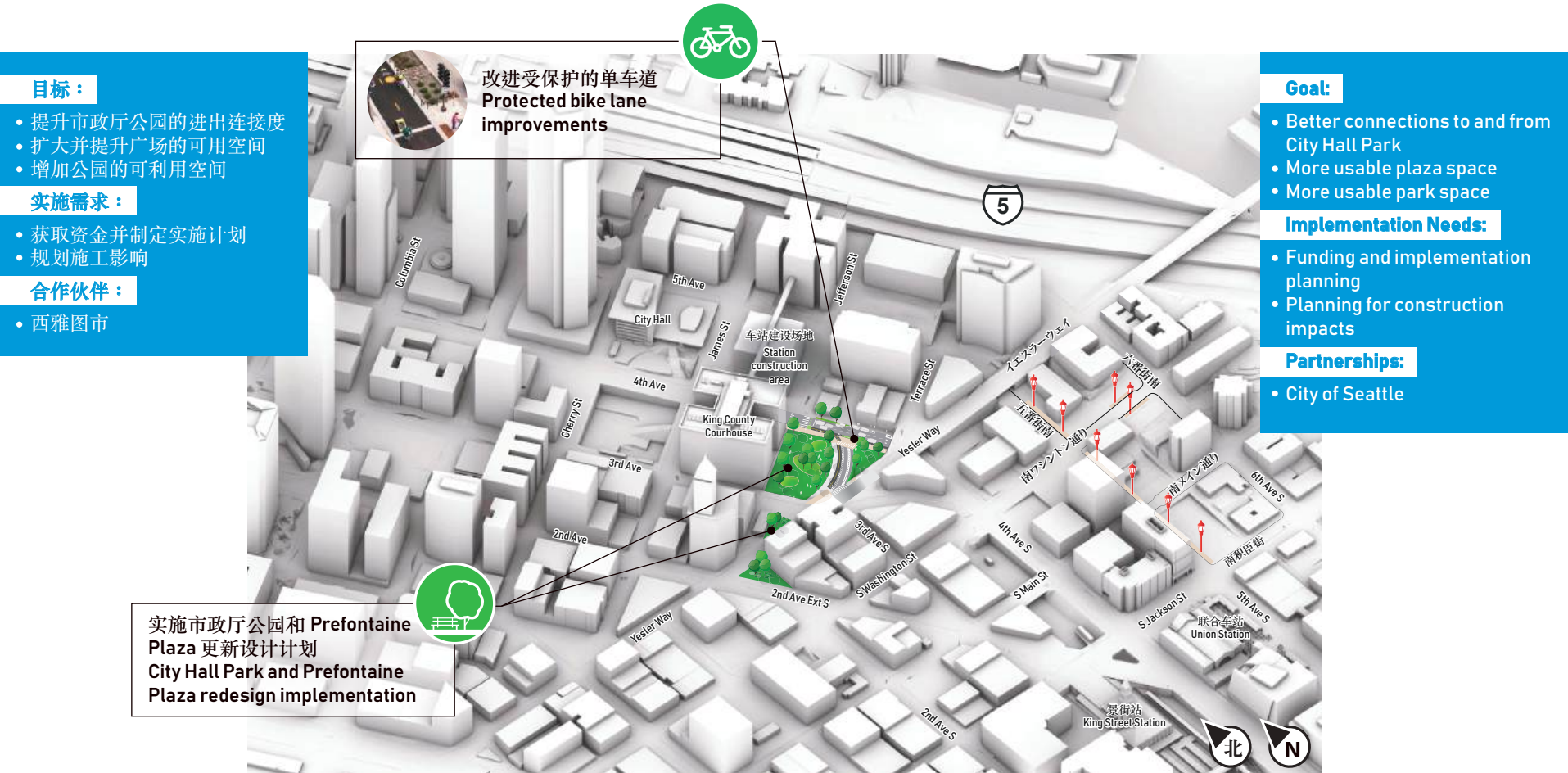
潜在的短期改善计划(5 年内)

Potential near term improvements (within 5 years)



潜在的后续改善计划(5 至 15 年)

Potential next steps improvements (5 to 15 years)



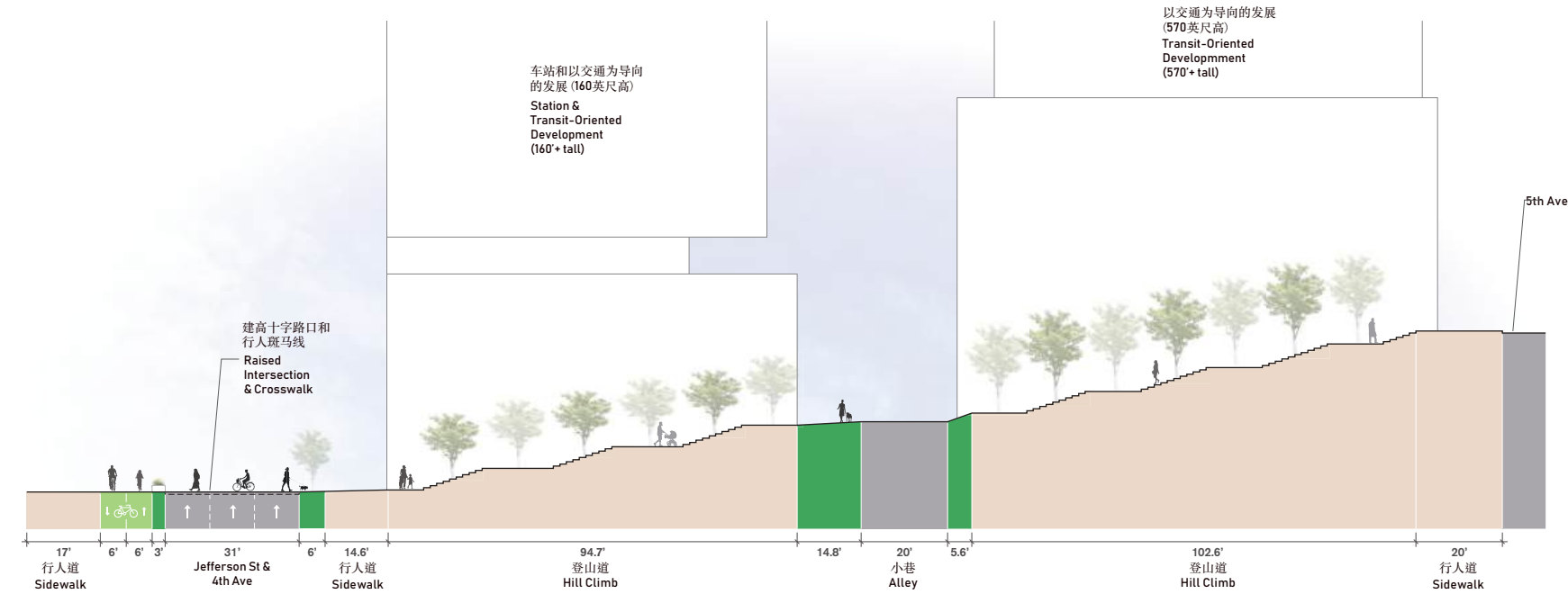
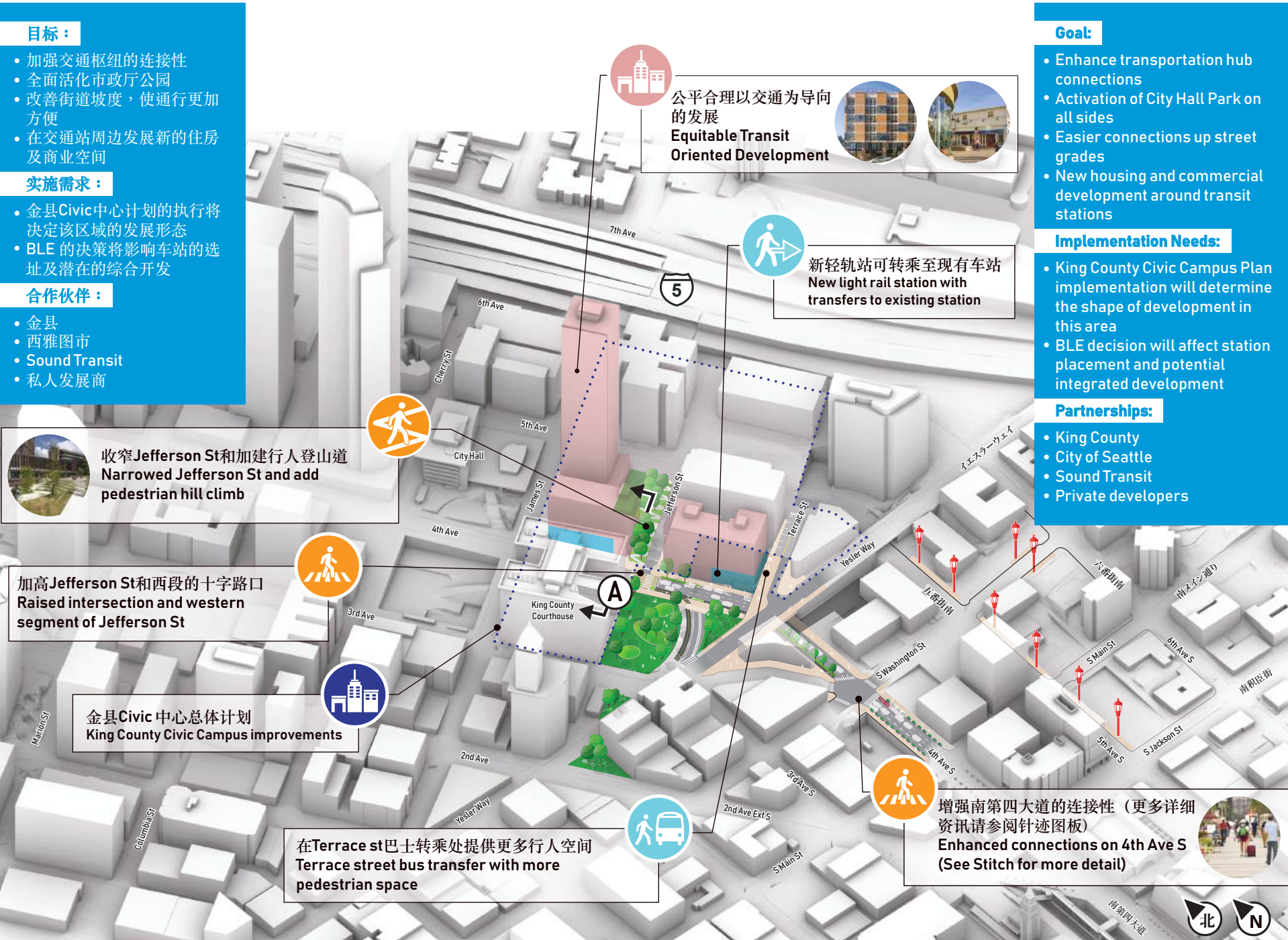
所展示的设计只是初步构想，该设计将随着持续的发展、分析及跨政府机构协作而有所调整。资金来源与具体实施责任尚待确定。
Depicted designs are preliminary and subject to change with continued development, analysis, and interagency coordination.
Funding and implementation responsibilities to be determined.

北焦点地区

NORTH FOCUS AREA

潜在的综合愿景(15年以上)

Potential comprehensive vision (15 years+)



A 4th Ave 横断面图
4th Ave cross section

所展示的设计只是初步构想，该设计将随着持续的发展、分析及跨政府机构协作而有所调整。资金来源与具体实施责任尚待确定。
Depicted designs are preliminary and subject to change with continued development, analysis, and interagency coordination.
Funding and implementation responsibilities to be determined.

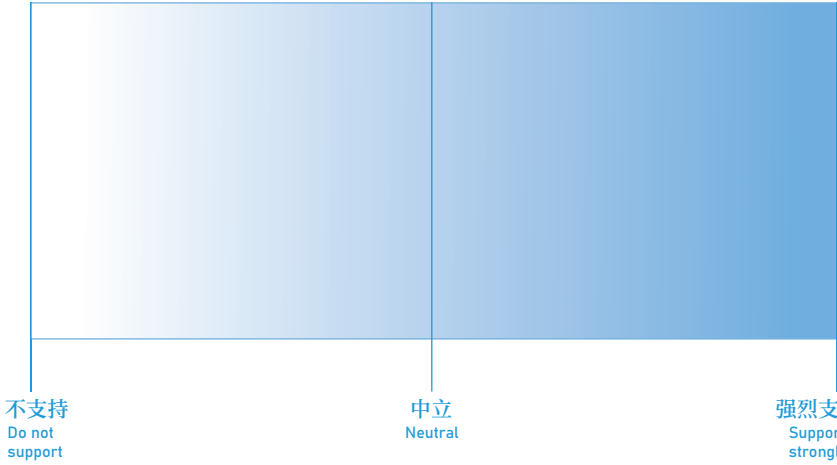
分享您的想法 – 北焦点地区

SHARE YOUR THOUGHTS - NORTH FOCUS AREA



您对于北部枢纽焦点区域所提计划的支持程度如何评估？请在以下的刻度上放置一个点，颜色越深（越靠右）表示支持度越高，没有颜色（越靠左）表示支持度越低。

How would you rate your support of the proposed plan in the North hub focus area? Place a dot on the scale below, with more color (towards the right) being the highest support and no color (towards the left) being the lowest support.



在规划推进的过程中，您希望看到哪些变更或改进？请说明您的理由。

What changes or improvements would you like to see as planning moves forward & why?

共同一起前进

MOVING FORWARD TOGETHER

许多拟议的南市中心枢纽（SDH）愿景概念与本区域内已规划的项目及基建投资相辅相成，而部分概念则需透过全新的独立项目来实现。大多数项目所需的资金超出现有预算范围。因此，透过协作设计与实施，项目主办单位及合作政府机构，能够推动整体效益超越单一项目的综合发展。

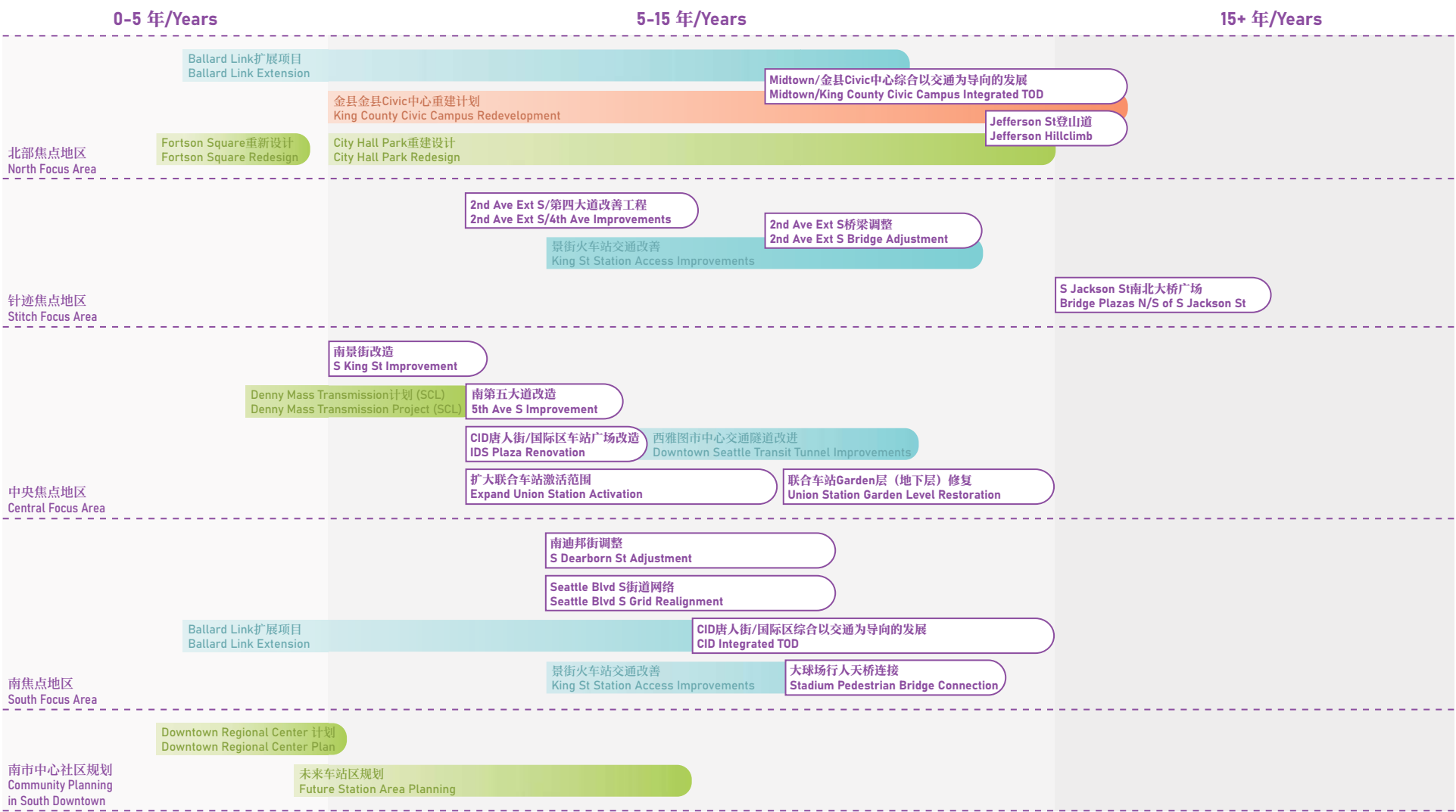
该展示图显示了SDH愿景的概念与已规划项目之间的连系，展述两者之间潜在的分阶段实施方式。目前此计划仍在设计阶段，合作的政府单位将持续研究各项细节，包括应优先考量的改善措施，以及资金与实施责任的分配。若您有任何问题、关切或想法，请随时与我们分享！

Many of the proposed South Downtown Hub (SDH) vision concepts complement planned projects and capital investments in the area, while others require new, stand-alone projects. Most require additional funding beyond what is provided for today. By working together on design and implementation, project sponsors and partner agencies can deliver projects that are greater than the sum of their parts.

This board highlights where alignment exists between SDH vision concepts and planned projects, along with a generalized view of how SDH vision concepts might be phased relative to one another and to planned projects. Note that this is a work in progress and there are many details that partner agencies will continue to work through, including what improvements to prioritize and responsibilities for funding and implementation of those improvements. Please tell us if you have any questions, concerns, or ideas to share!

地图说明 – 第25板南市中心枢纽计划及规划项目

Map Key for Board 25 – SDH Plan and Planned Projects



关键下一步

Key Next Steps

社区参与和机构间协调

Community Engagement & Interagency Coordination

时间与阶段性实施

Timing & Phasing

- 制定分阶段施工计划
- 根据社区意见确定优先推行的重点项目
- Develop a phased construction plan
- Prioritize key projects based on community feedback

营运与维护规划

Operations & Maintenance Planning

- 确认短期及长期计划的营运假设
- 制定现有及未来公共空间与活动的保养计划
- Confirm operations assumptions for short-term and long-term plans
- Create a maintenance plan for existing and future public spaces and activations

资金策略

Funding Strategy

- 确定可能的资金来源
- 善用本地计划资源以支持合作项目
- Identify possible funding sources
- Leverage local initiatives to fund partnered projects

监测与衡量指标

Monitoring & Metrics

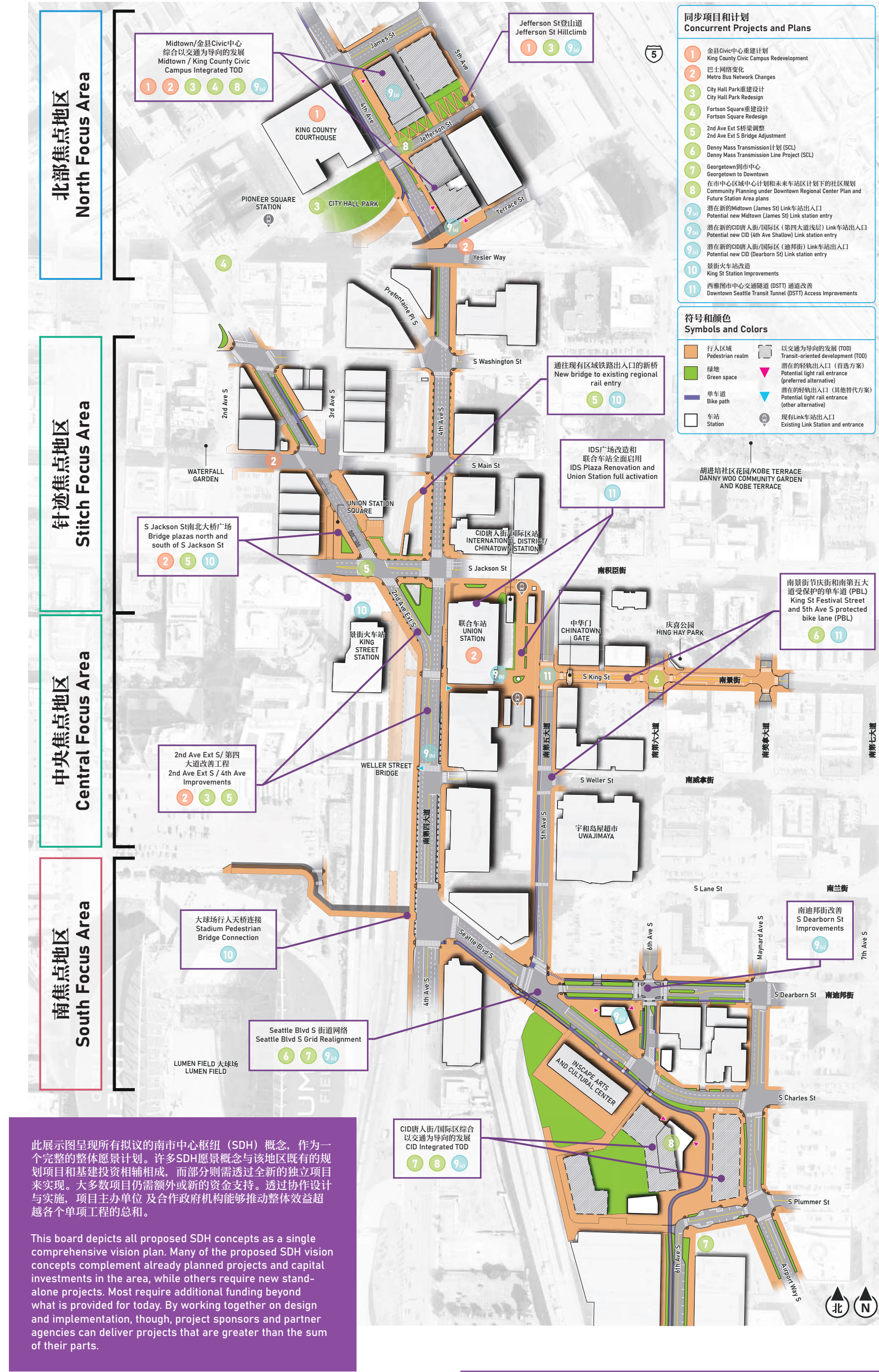
- 落实成功衡量指标
- 制定一个时间表以定期衡量与监测计划的更新和进展
- Confirm metrics of success
- Create a schedule to regularly maintain and monitor the plan for updates and progress



所展示的设计只是初步构想，该设计将随着持续的发展、分析及跨政府机构协作而有所调整。资金来源与具体实施责任尚待确定。 Depicted designs are preliminary and subject to change with continued development, analysis, and interagency coordination. Funding and implementation responsibilities to be determined.

SDH 南市中心枢纽愿景规划与规划项目

SDH PLAN AND PLANNED PROJECTS





Overall, do the public space and transit development ideas for improving connections between neighborhoods and transportation modes align with your vision? Please explain.

Depicted designs are preliminary and subject to change with continued development, analysis, and interagency coordination. Funding and implementation responsibilities to be determined.