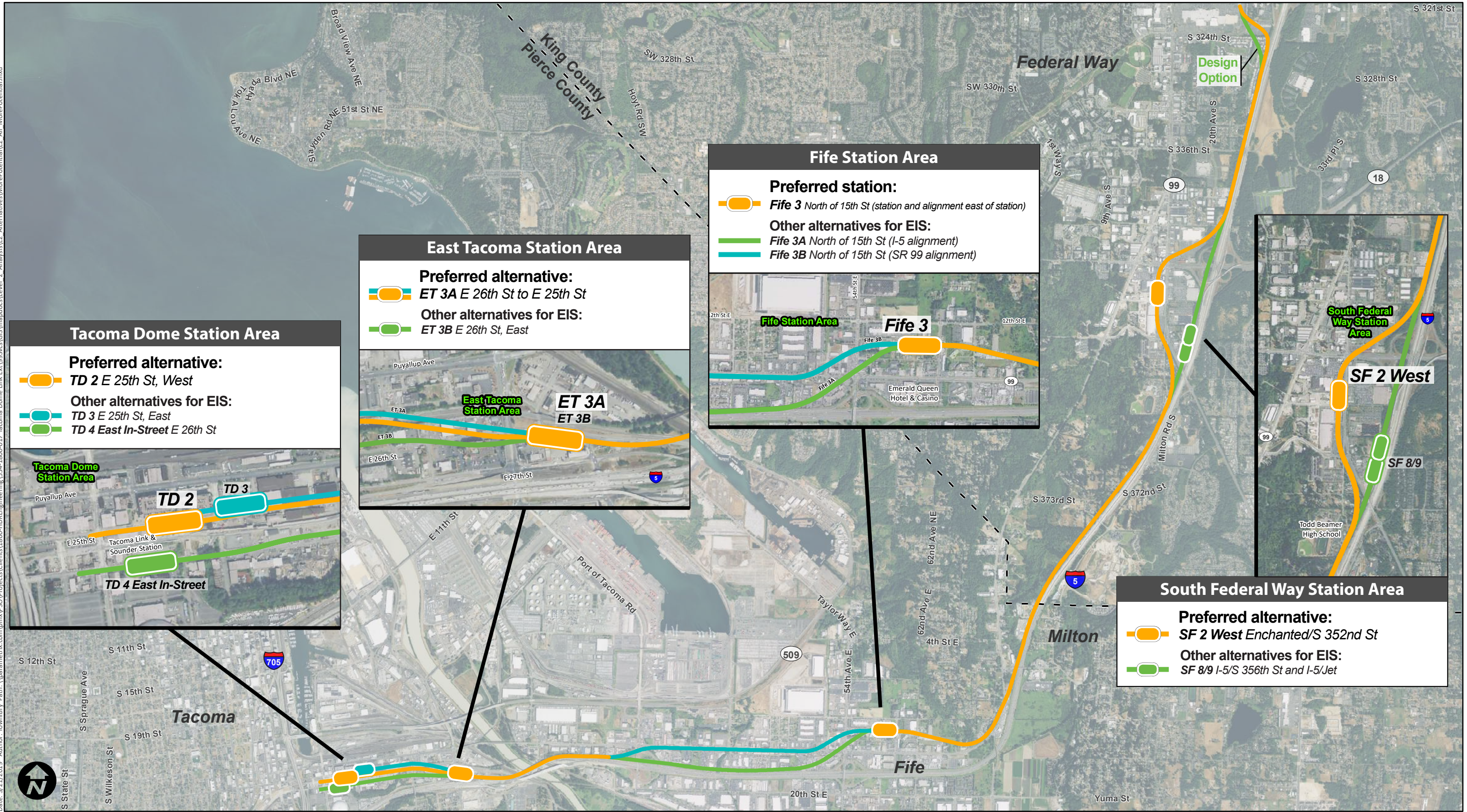


Date: 3/21/2019 Author: TownBry Path: \\parametrix.com\pmx\PSO\Projects\1800-HDR\Engineering\554-1800-017 Tacoma Dome Link Ext\955\GIS\mapdocs\Level_2_Analysis\2_Alternatives\MorePotential\2_All_MorePotential.mxd



Tacoma Dome Station Area

Preferred alternative:
 TD 2 E 25th St, West

Other alternatives for EIS:
 TD 3 E 25th St, East
 TD 4 East In-Street E 26th St

East Tacoma Station Area

Preferred alternative:
 ET 3A E 26th St to E 25th St

Other alternatives for EIS:
 ET 3B E 26th St, East

Fife Station Area

Preferred station:
 Fife 3 North of 15th St (station and alignment east of station)

Other alternatives for EIS:
 Fife 3A North of 15th St (I-5 alignment)
 Fife 3B North of 15th St (SR 99 alignment)

South Federal Way Station Area

Preferred alternative:
 SF 2 West Enchanted/S 352nd St

Other alternatives for EIS:
 SF 8/9 I-5/S 356th St and I-5/Jet



PREFERRED ALTERNATIVE AND OTHER ALTERNATIVES FOR EIS

ALL STATION AREAS
TACOMA DOME LINK EXTENSION

ILLUSTRATION PURPOSES ONLY; NOT TO SCALE; DRAFT 8/14/2019