

# *Tacoma Dome Link Extension*

*Scoping Open House*

*April 2019*



## *Tonight's presentation*

- Background on Sound Transit system
- TDLE alternatives: Level 1 and Level 2
- EIS scoping & next steps

***Background on the  
Sound Transit system***

# System expansion

Sound Transit's voter-approved system expansion means the opening of new light rail, bus rapid transit and commuter rail stations across the region every few years will provide fast, reliable alternatives to congested roads.

 [soundtransit.org/system](https://www.soundtransit.org/system)





# Tacoma Dome Link Extension (TDLE)

## Federal Way Transit Center to Tacoma Dome

- Length: 9.7 miles
- Stations: 4 (2 parking garages)
- Scheduled opening in 2030

## Operations and Maintenance Facility (OMF) South

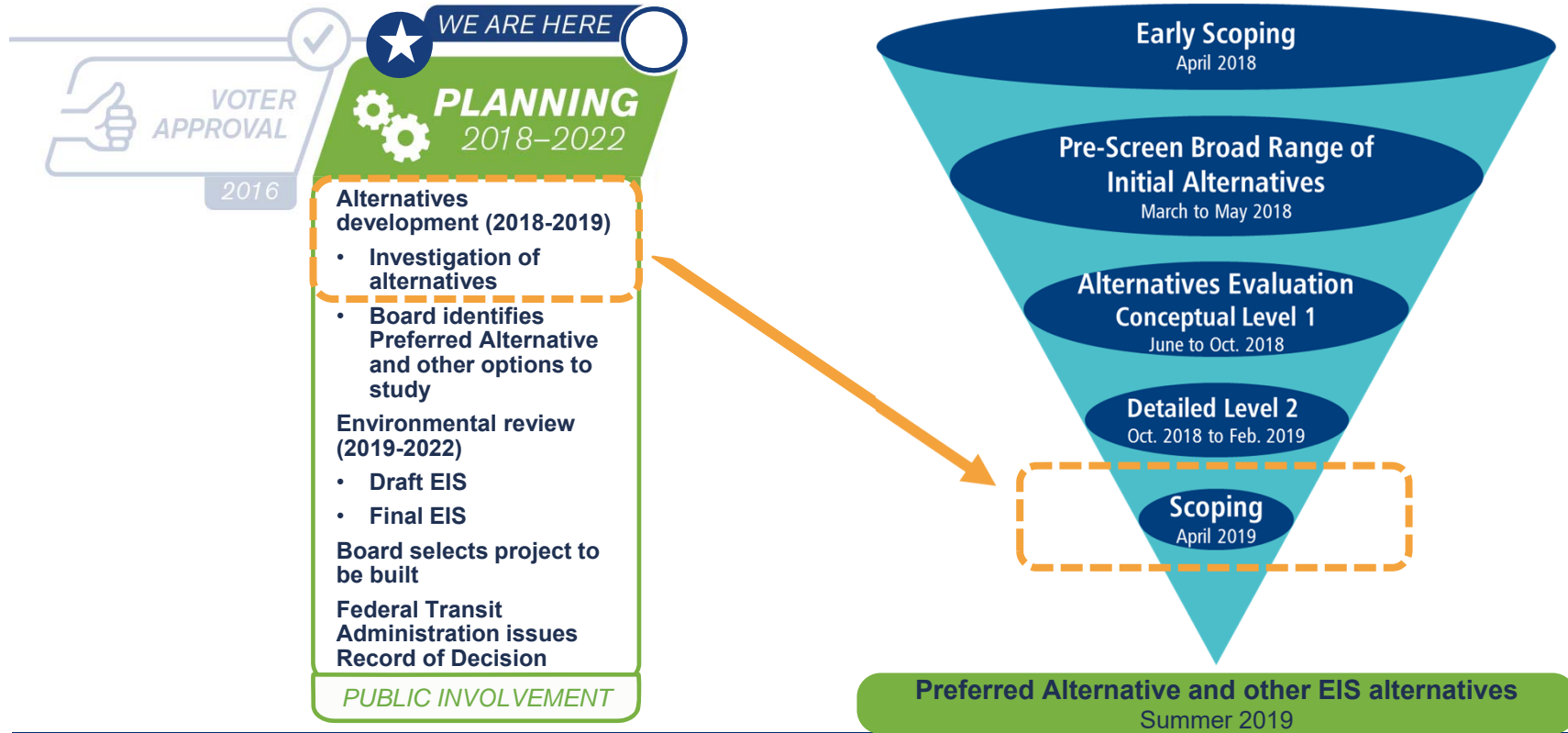
- Scheduled opening in 2026
- South King County

***TDLE alternatives  
development process***

# Project timeline



# Alternatives development process





# Outreach to date

2018

2019

*Spring*

*Summer*

*Fall*

*Winter*

**Early scoping**

- 550+ comments
- 2,500 participants



# Outreach to date



Spring

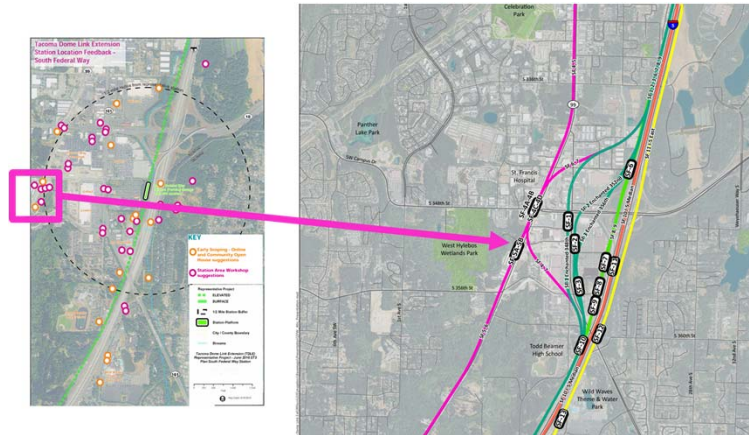
Summer

Fall

Winter

Early scoping

First round of evaluation  
(Level 1)



# Outreach to date



**Spring**

Early scoping

*First round of evaluation*

**Summer**

September outreach

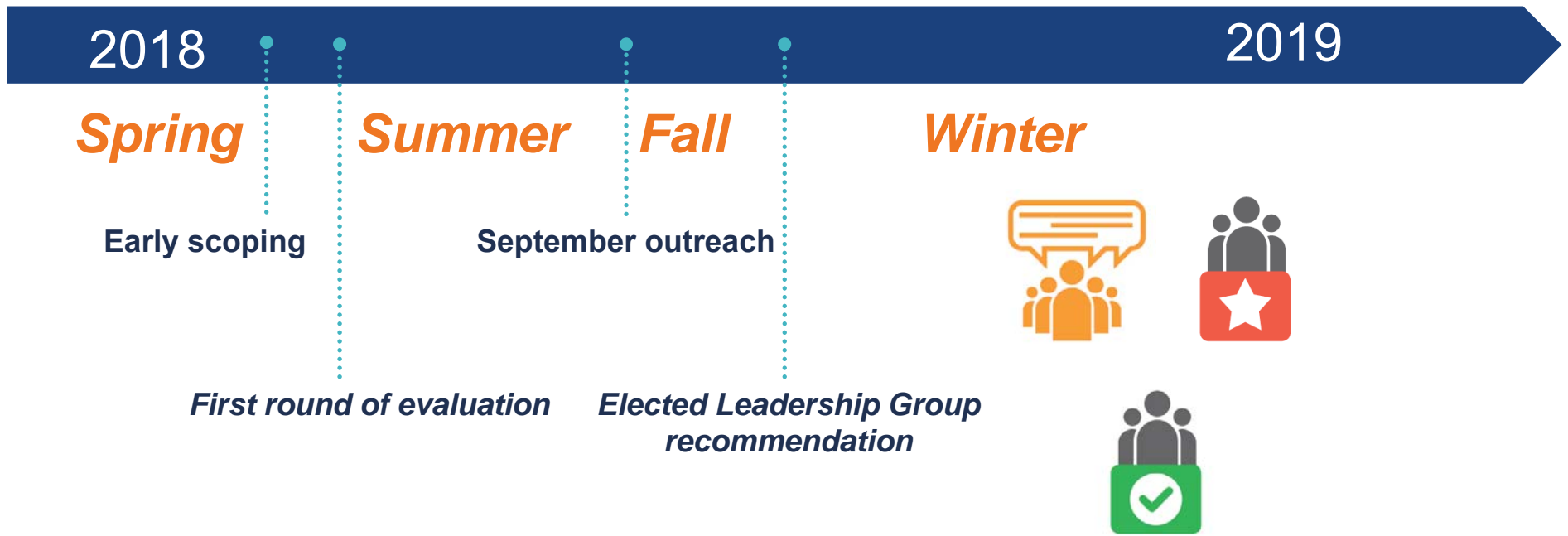
- 700+ comments
- 3,000 participants

**Fall**

**Winter**



# Outreach to date

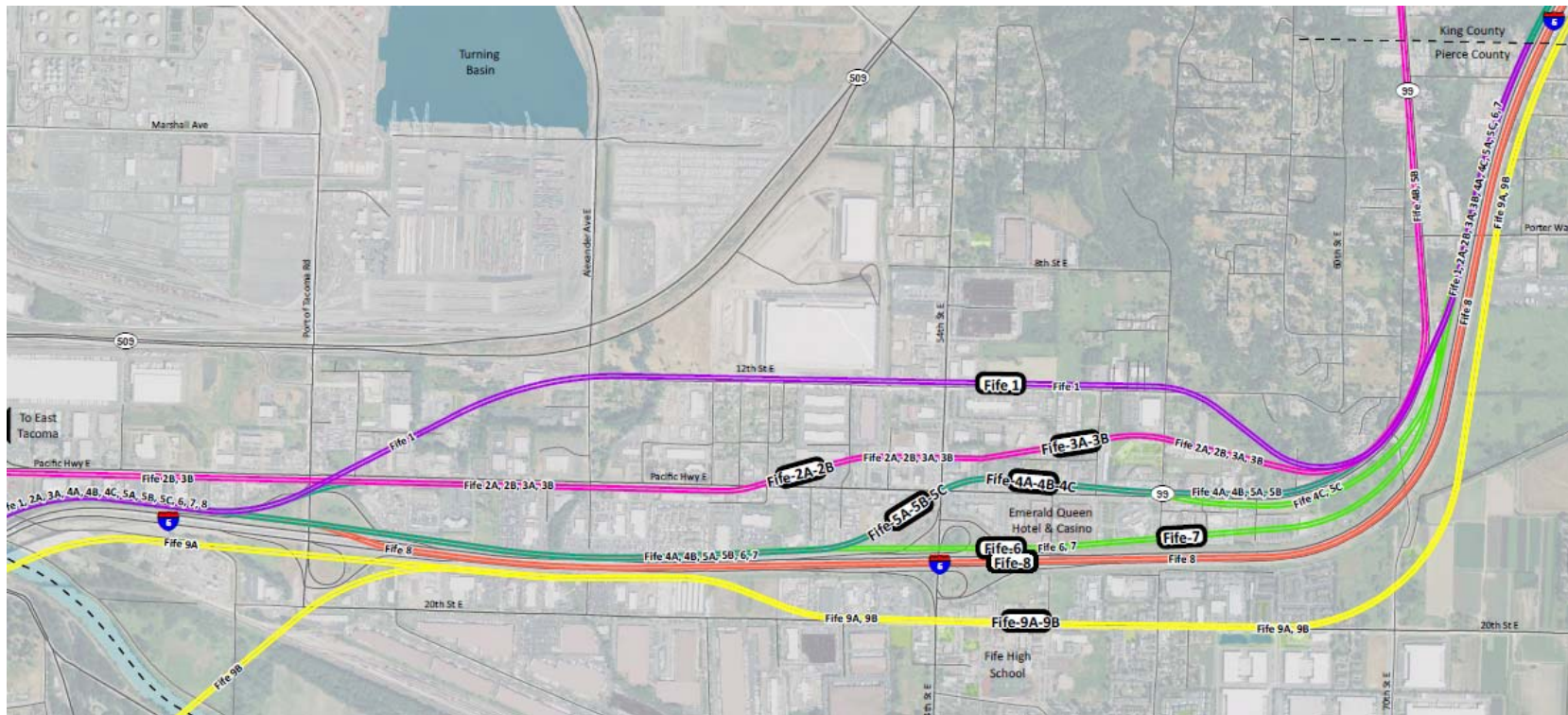


***TDLE Level 1  
alternatives  
evaluation  
(June – Oct 2018)***

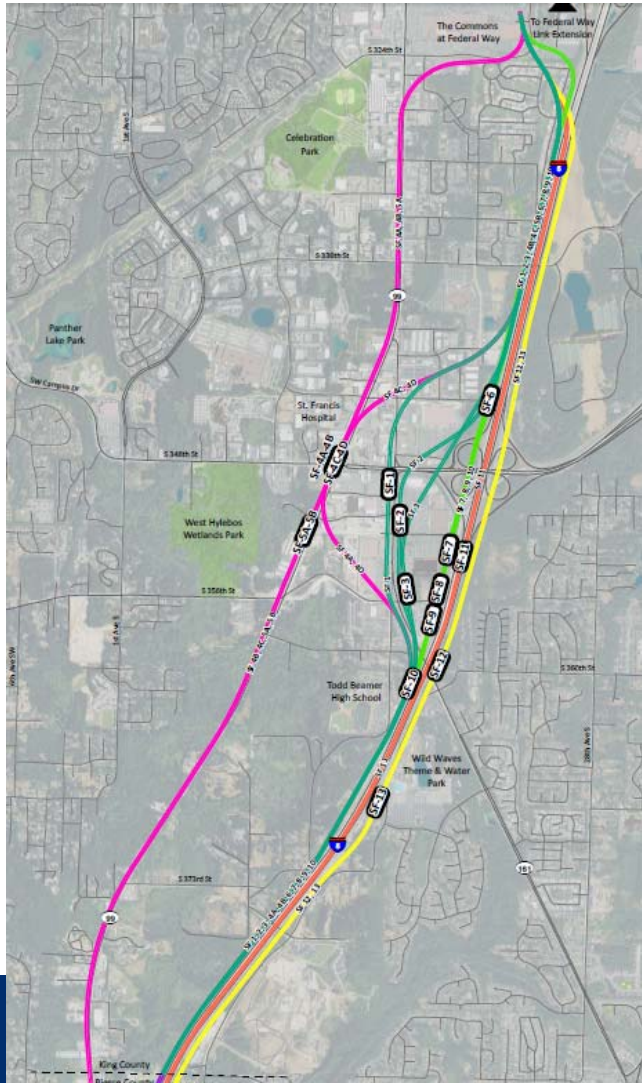
# Level 1 alternatives: Tacoma



# Level 1 alternatives: Fife



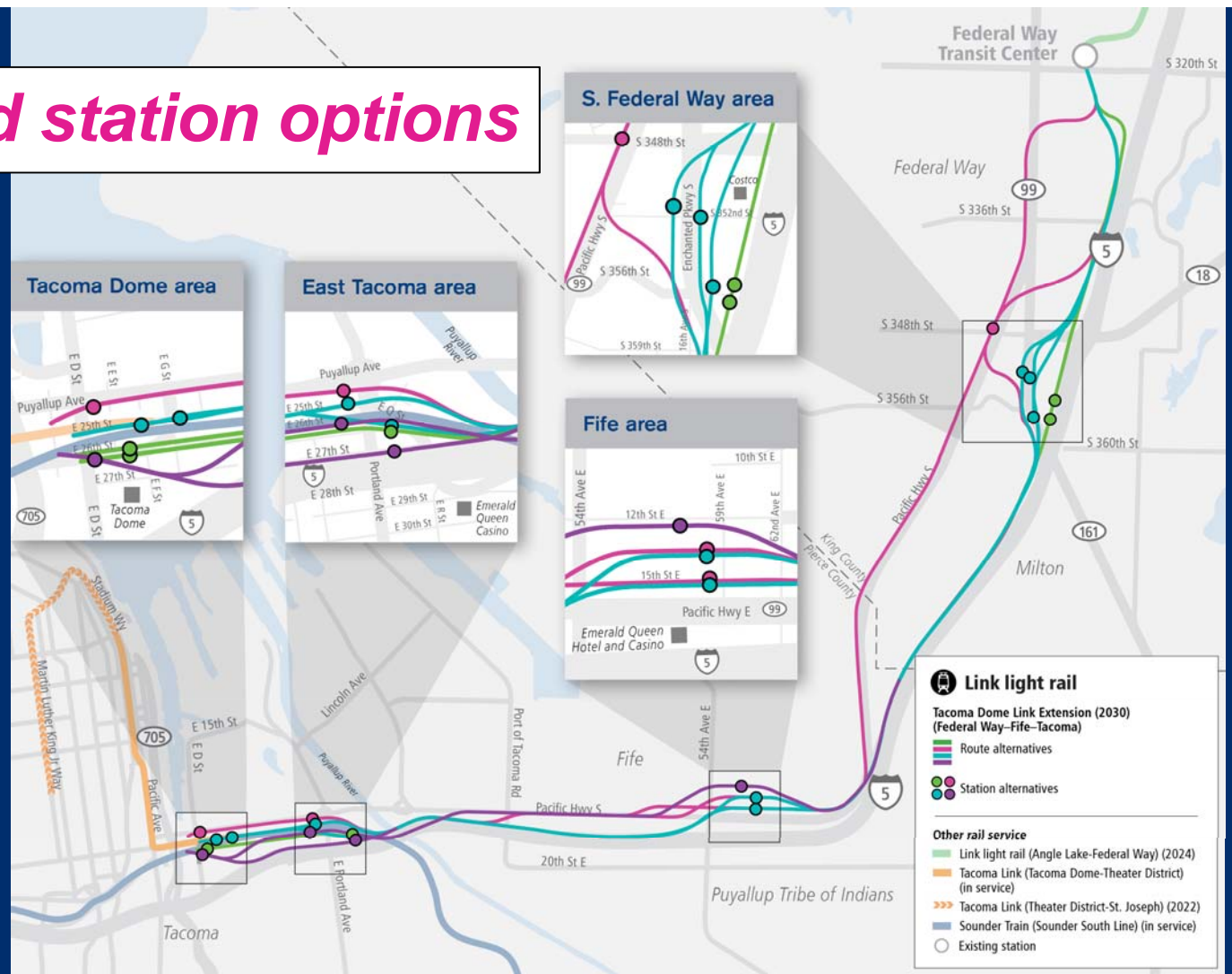
# Level 1 alternatives: South Federal Way





***TDLE Level 2  
alternatives  
evaluation  
(Oct 2018 – Feb 2019)***

# ➤ Route and station options



## *Evaluation criteria*



➤ *Effective transportation solutions*



➤ *Land use and economic development and Transit-Oriented Development (TOD)*



➤ *Preserve the environment*

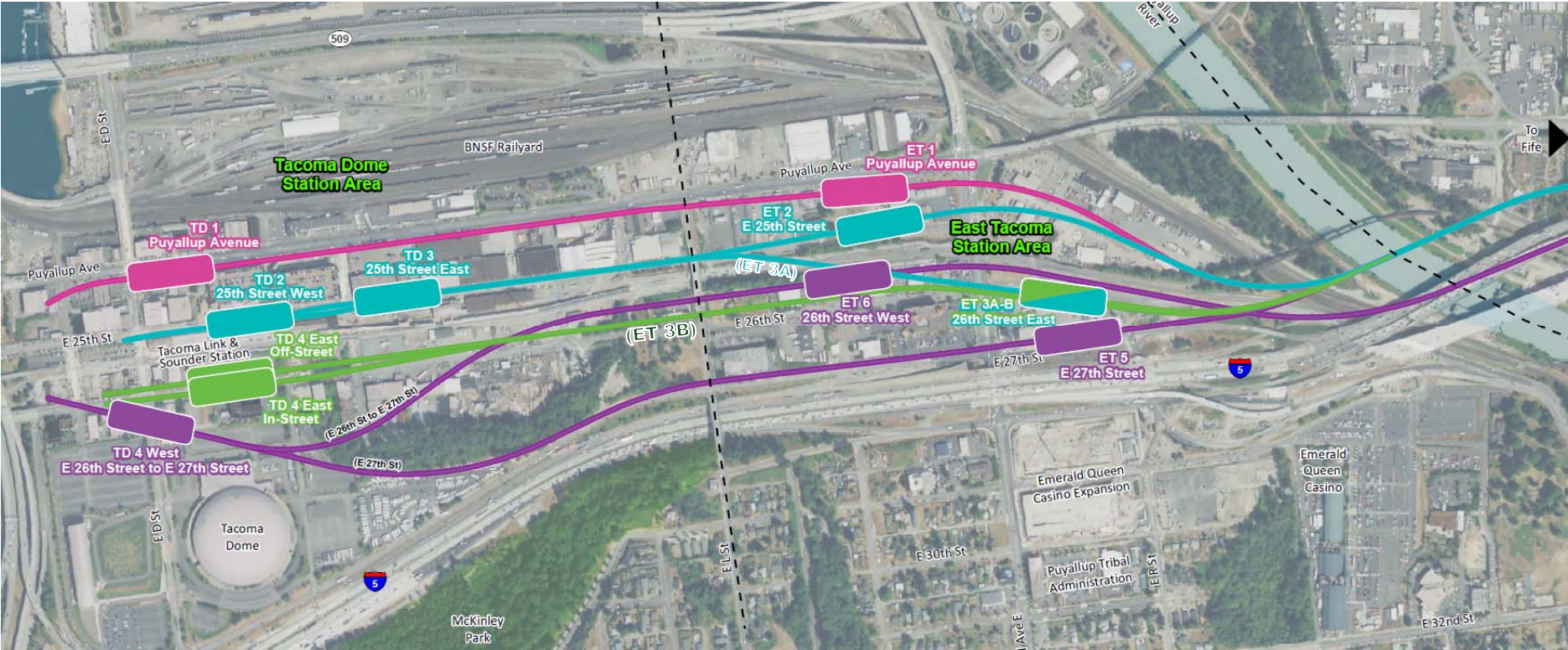


➤ *Equitable mobility*

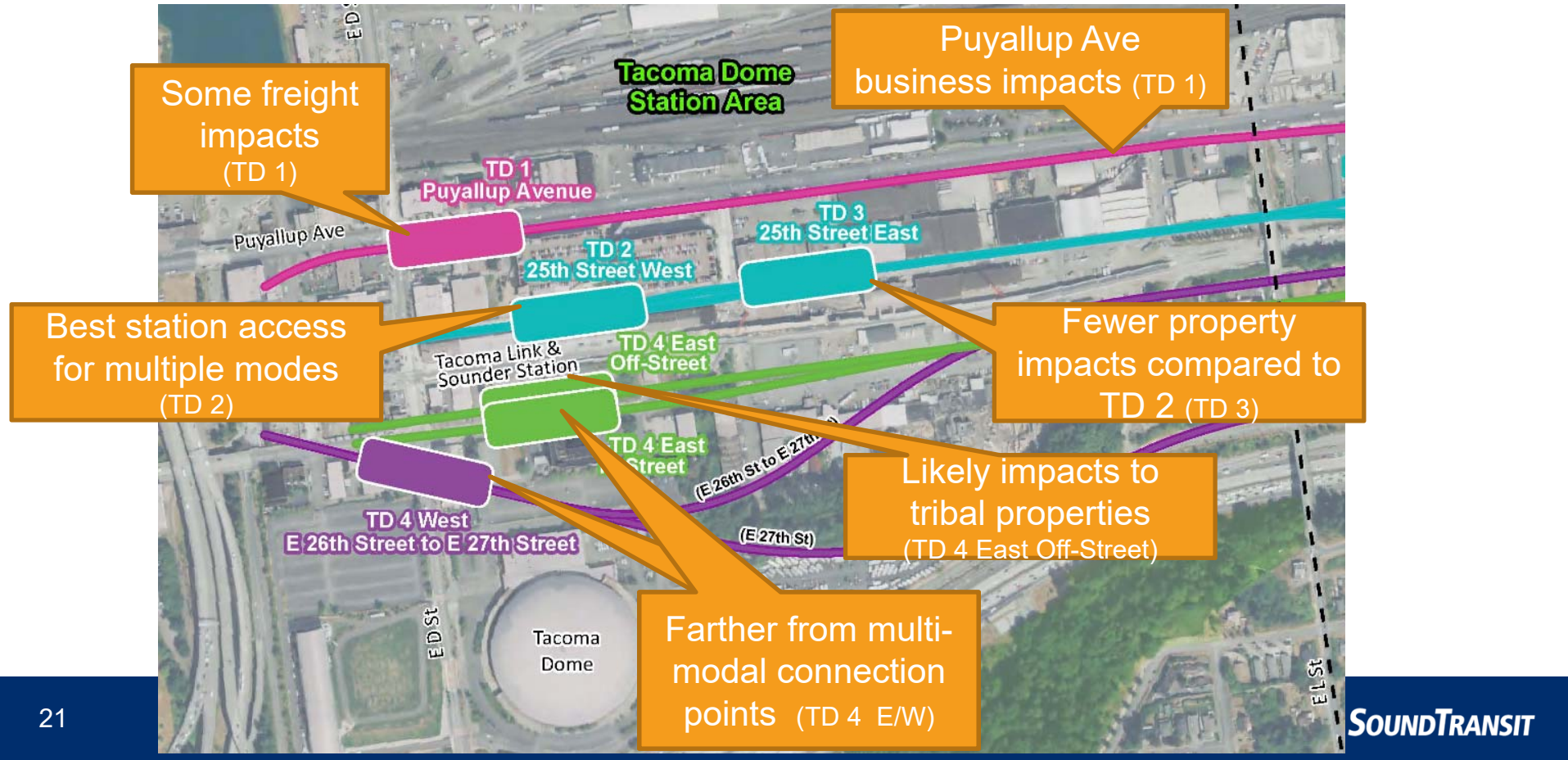


➤ *Financially sustainable and constructible*

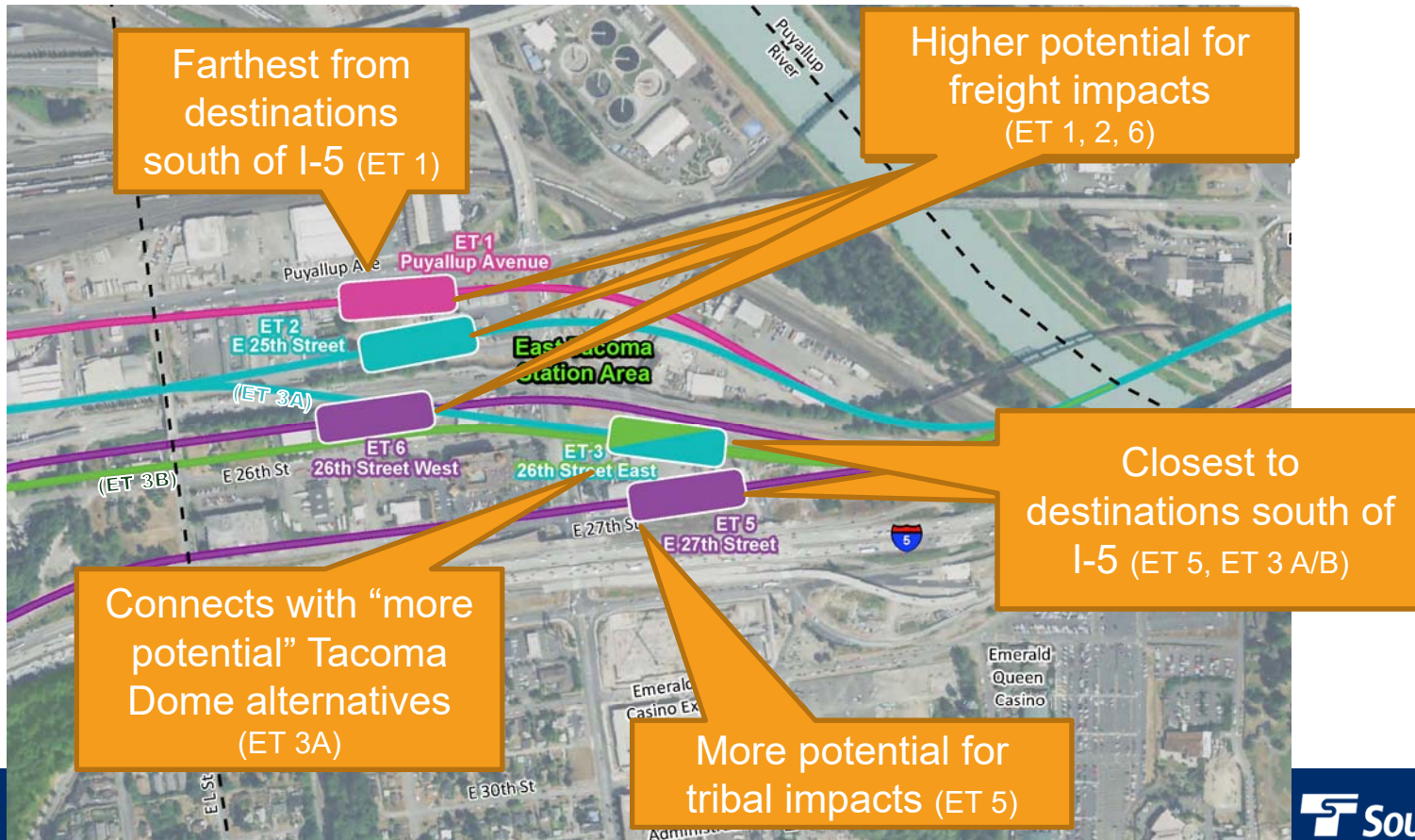
# Tacoma Dome and East Tacoma station areas



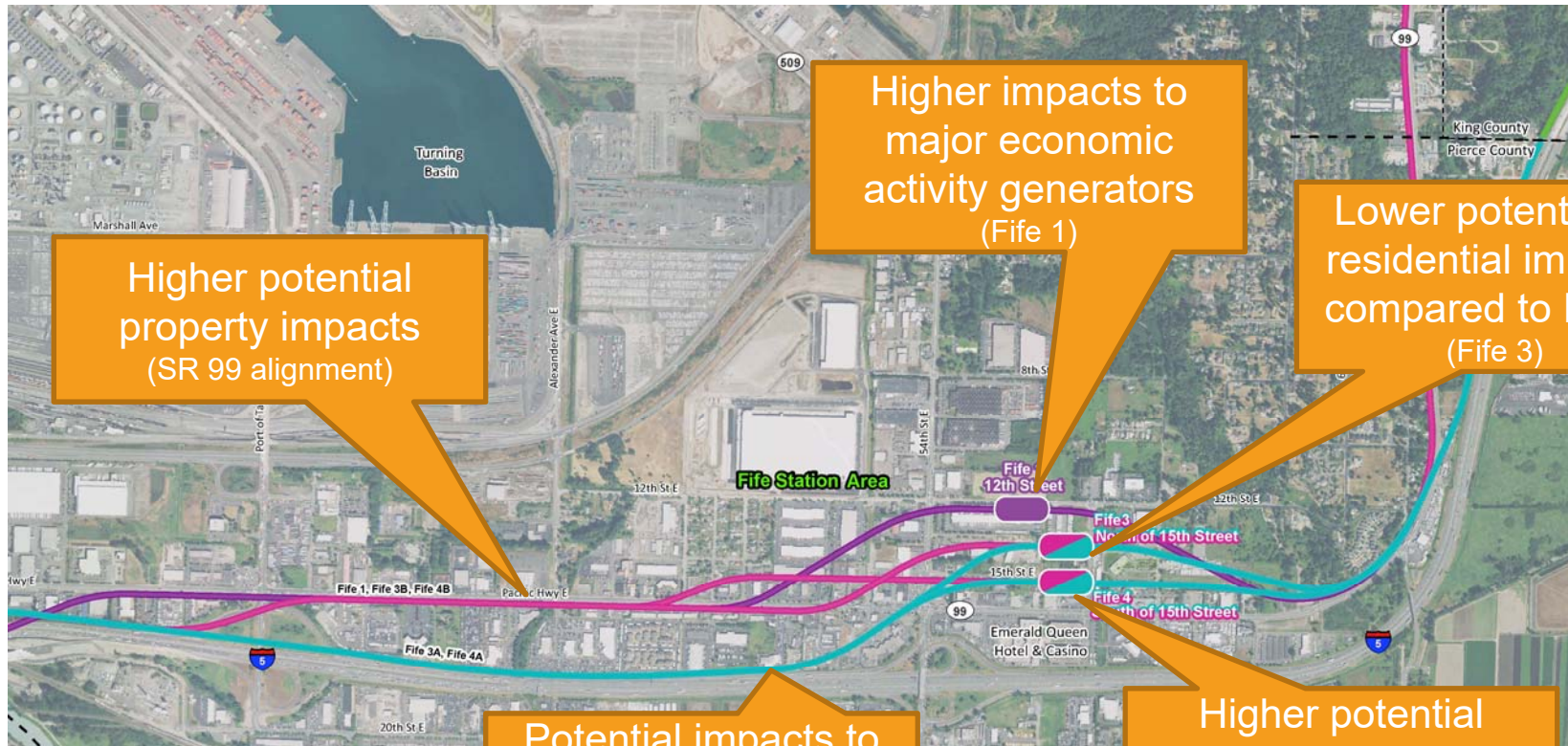
## Level 2 alternatives: Tacoma Dome



## Level 2 alternatives: East Tacoma



## Level 2 alternatives: Fife



Higher potential property impacts (SR 99 alignment)

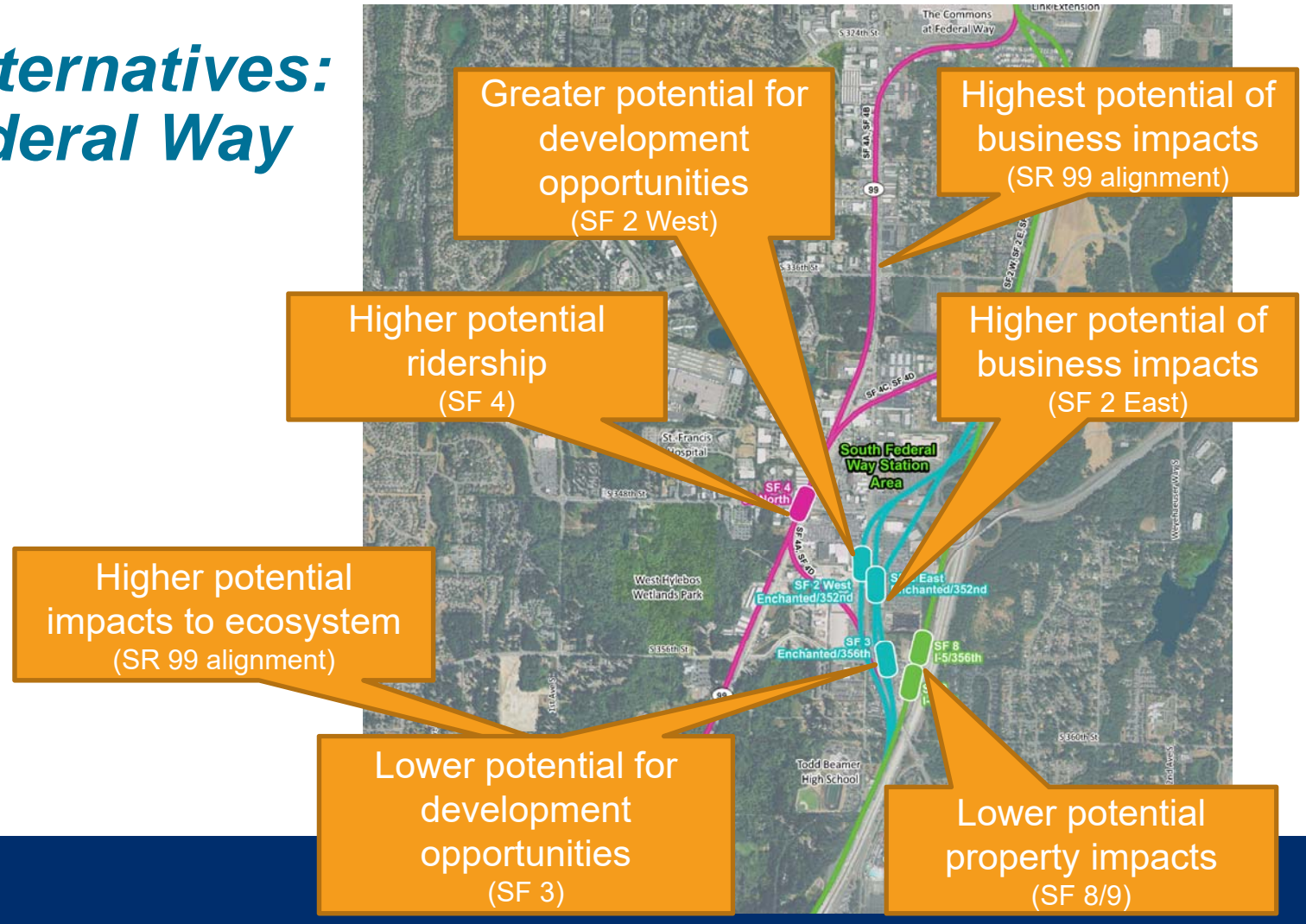
Higher impacts to major economic activity generators (Fife 1)

Lower potential of residential impacts compared to Fife 4 (Fife 3)

Potential impacts to view dependent business (I-5 alignment)

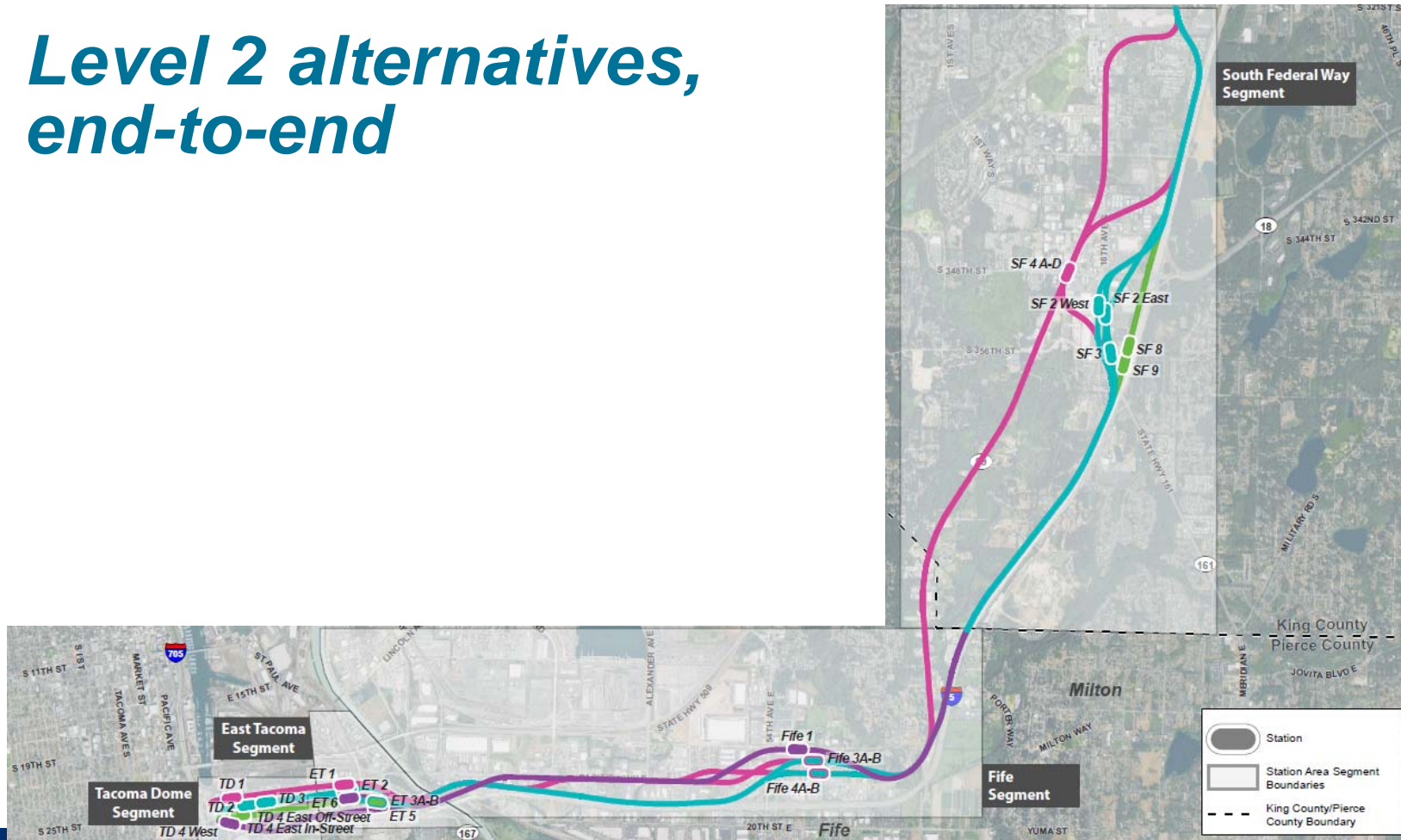
Higher potential impacts to freight movement (Fife 4)

## Level 2 alternatives: South Federal Way



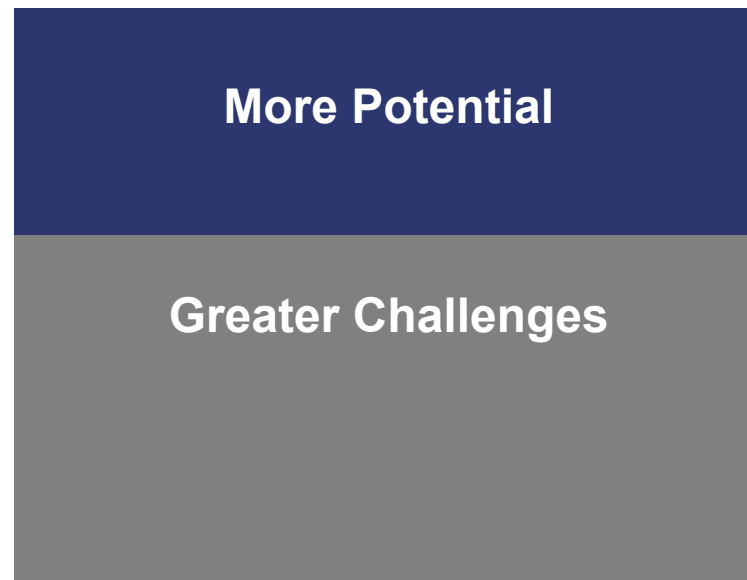


# Level 2 alternatives, end-to-end



# *Initial grouping of alternatives based on latest technical analysis*

*All  
Alternatives*



- › No decisions made
- › Alternatives compared to others in that station area

***EIS scoping &  
next steps***

## *What is scoping?*

- Includes input from the public, agencies and tribes
- Assists in defining the purpose and need
- Assists in determining the range of alternatives to study in the Environmental Impact Statement (EIS)
- Focuses study efforts

# What is typically studied in an

# EIS?



## Transportation

- Ridership
- Transit
- Regional and local traffic
- Non-motorized facilities and modes
- Freight movement
- Marine navigation
- Aviation
- Construction traffic

## Natural Environment

- Air quality and greenhouse gas emissions
- Ecosystems and fish and wildlife habitat
- Water resources
- **Geology and soils**

## Built Environment

- Noise and vibration
- Economic effects
- Visual resources
- Parks resources
- Land use
- Acquisitions, displacements and relocations
- Energy use
- Hazardous materials
- Public services and utilities
- Impacts on low income and minority populations
- Cultural, historic and archaeological resources
- Construction impacts

## *Comment on scope of EIS*

- Routes & stations to study further
- Topics to study in the EIS  
(e.g., wetlands, economics, land use)
- Purpose and need of the project

## *Scoping feedback*

- Published in a Scoping Summary Report
- Informs Sound Transit Board and FTA identification of alternatives to study in the EIS
- Guides ongoing public, agency and tribal engagement

# Environmental review timeline\*

Public participation throughout

2019

**Spring 2019**  
EIS scoping /  
public comment period

**July 2019**  
ST Board & FTA expected  
to identify alternatives to  
study in EIS

2020 / 2021

**Spring 2021**  
Draft EIS issued;  
public comment  
period

2022

**Spring/Summer 2022**  
Final EIS issued

**Summer 2022**  
ST Board selects  
project to be built

FTA issues record of  
decision (ROD)



# Multiple ways to provide your comments by May 1



**TODAY**

Fill out a comment card or give an oral comment



**ONLINE**

[tdlink.participate.online](http://tdlink.participate.online)



**EMAIL**

[TDLEScoping@soundtransit.org](mailto:TDLEScoping@soundtransit.org)



**MAIL**

Sound Transit, Elma Borbe

401 S. Jackson Street, Seattle, WA 98104



**PHONE**

(206) 903-7118

*Thank you.*



 [soundtransit.org](https://www.soundtransit.org)



# Notable advantages & disadvantages

Alternatives	Technical Analysis	Public Feedback	SG Feedback	ELG Recommendation
<b>Alternatives with <u>MORE POTENTIAL</u></b>				
<b>TD 2</b> 25th Street West	<b>Notable Advantages:</b> <ul style="list-style-type: none"> <li>Key takeaway</li> </ul> <b>Notable Disadvantages:</b> <ul style="list-style-type: none"> <li>Key takeaway</li> </ul>	Scoping period	SG meeting: mid-May	ELG meetings: late May, early June
<b>TD 3</b> 25th Street East	<b>Notable Advantages:</b> <ul style="list-style-type: none"> <li>Key takeaway</li> </ul> <b>Notable Disadvantages:</b> <ul style="list-style-type: none"> <li>Key takeaway</li> </ul>			
<b>Alternatives with <u>GREATER CHALLENGES</u></b>				
<b>TD 1</b> Puyallup Avenue	<b>Notable Advantages:</b> <ul style="list-style-type: none"> <li>Key takeaway</li> </ul> <b>Notable Disadvantages:</b> <ul style="list-style-type: none"> <li>Key takeaway</li> </ul>			
<b>TD 4</b> East off-street E 26th Street	<b>Notable Advantages:</b> <ul style="list-style-type: none"> <li>Key takeaway</li> </ul> <b>Notable Disadvantages:</b> <ul style="list-style-type: none"> <li>Key takeaway</li> </ul>			

- › Technical analysis first step in evaluation
- › Also include summary of scoping feedback, Stakeholder Group feedback, & Elected Leadership Group recommendation
- › Results provided to FTA and ST Board