

# *West Seattle and Ballard Link Extensions*

## *Neighborhood Forum*

*Nov. 20, – Dec. 7, 2019*



# *Event schedule*

**5:30 p.m.** – View materials and share your input

Q: What do you value about your community?

Q: How could a station best serve your community?

**5:45 p.m.** – Presentation

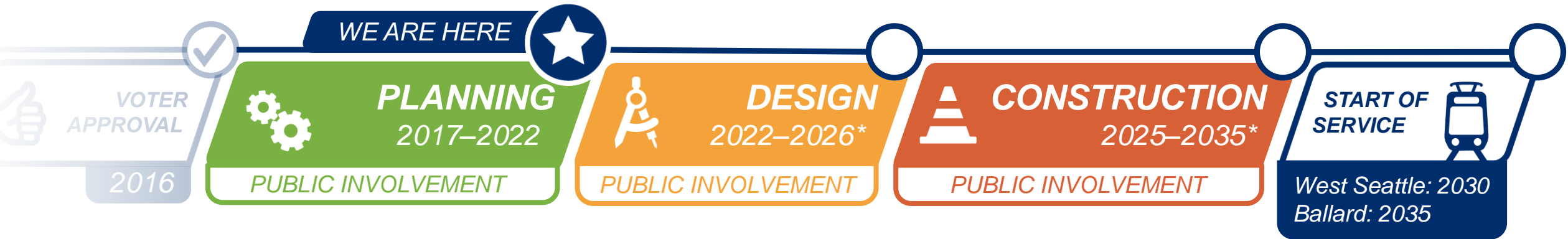
**6:25 p.m.** – Small group conversations

**7:30 p.m.** – Event ends

# ***What we'll cover***

- **Timeline and background**
- **What routes and stations we're studying**
- **What happens in environmental review**
- **Upcoming station planning work**

# Project timeline



 **VOTER  
APPROVAL**

2016



# PLANNING



DES

## 2017–2019

### Alternatives development



Feb–March 2018:  
Early scoping



Feb–April 2019:  
Scoping

May–Oct 2019: Board  
identifies preferred  
alternatives and other  
DEIS alternatives

## 2019–2022

### Environmental review

Early 2021: Publish Draft EIS

Board confirms or modifies  
preferred alternatives

2022: Publish Final EIS







Board selects projects  
to be built

Federal Record of Decision

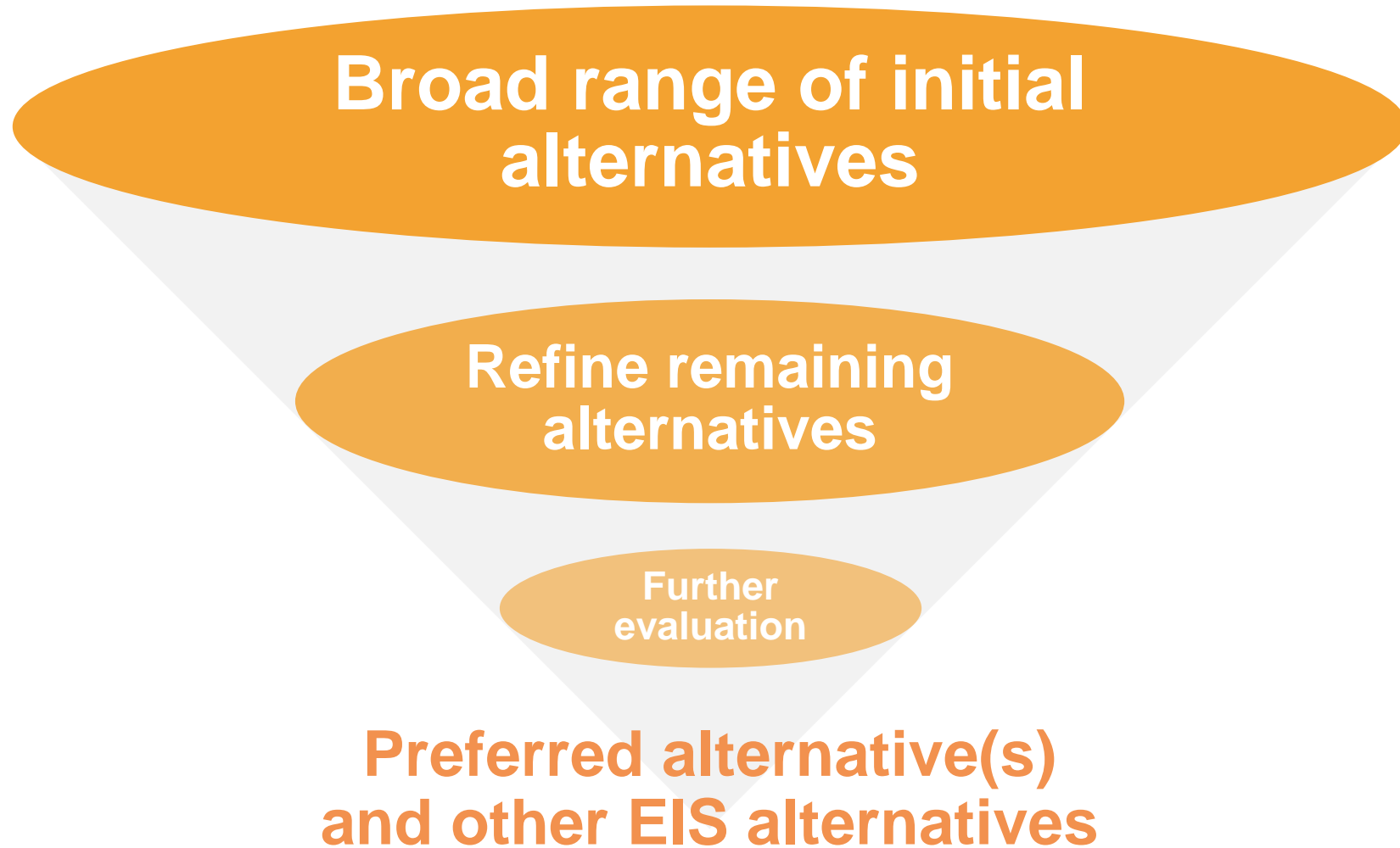
*PUBLIC INVOLVEMENT*

# ***Public outreach and involvement***

***Alternatives development phase: Jan 2018 – April 2019***

-  **5,600+** responses to your comments and questions
-  **189** presentations to local community groups
-  **26** neighborhood fairs and festivals visited
-  **25** email updates sent to our subscribers
-  **21** stakeholder and elected leadership group meetings facilitated
-  **17** open houses and workshops held in your neighborhoods

# *Alternatives development screening process*



 **VOTER  
APPROVAL**

**2016**



# PLANNING



**DES**

## 2017–2019

### Alternatives development

Feb–March 2018:  
Early scoping

Feb–April 2019:  
Scoping

May–Oct 2019: Board  
identifies preferred  
alternatives and other  
DEIS alternatives

## 2019–2022

### Environmental review

Early 2021: Publish Draft EIS

Board confirms or modifies  
preferred alternatives

2022: Publish Final EIS

Board selects projects  
to be built

Federal Record of Decision



**PUBLIC INVOLVEMENT**



 **VOTER  
APPROVAL**

**2016**



# PLANNING



**DES**

## 2017–2019

### Alternatives development

Feb–March 2018:  
Early scoping

Feb–April 2019:  
Scoping

May–Oct 2019: Board  
identifies preferred  
alternatives and other  
DEIS alternatives



## 2019–2022

### Environmental review

Early 2021: Publish Draft EIS

Board confirms or modifies  
preferred alternatives




2022: Publish Final EIS

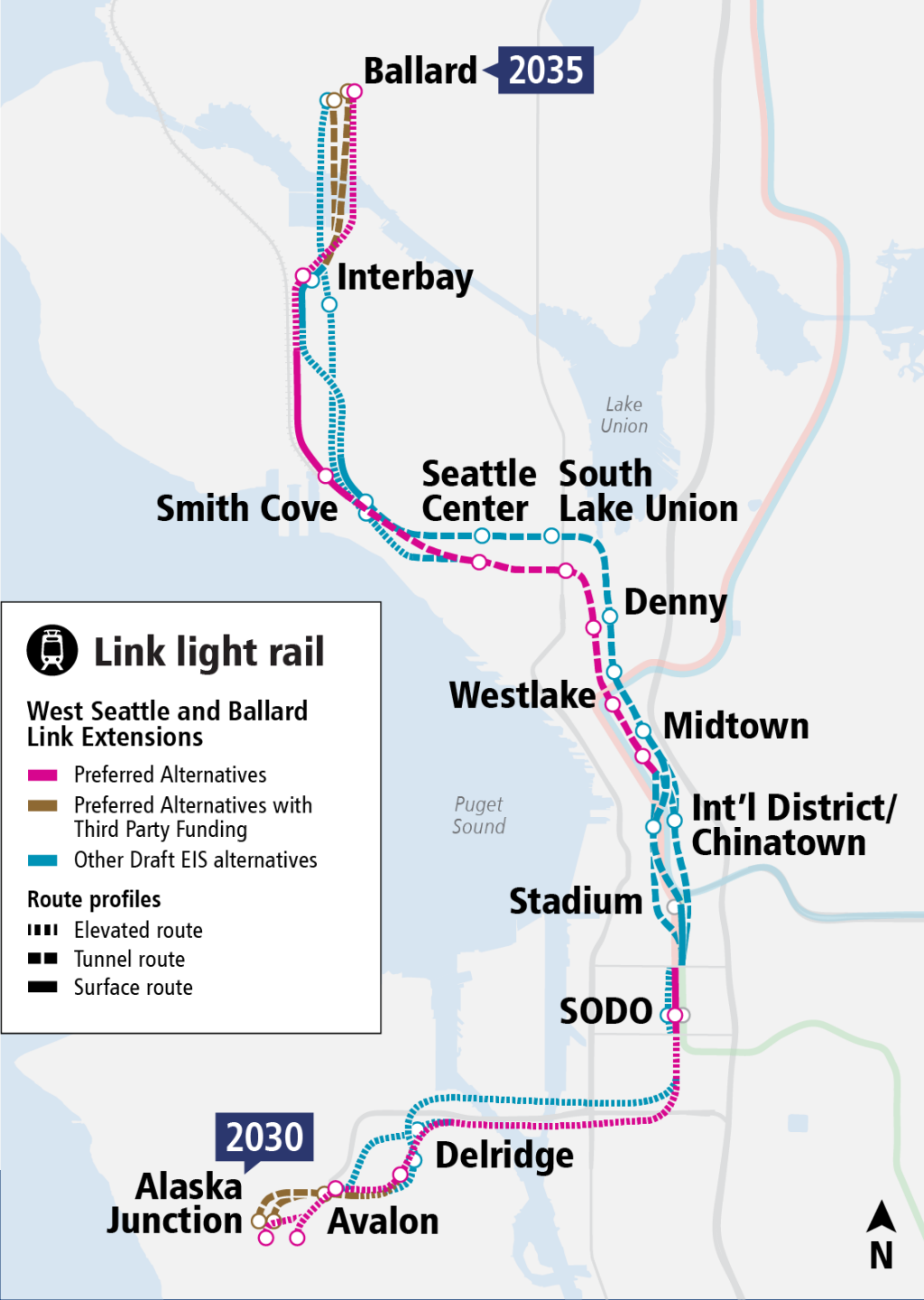
Board selects projects  
to be built

Federal Record of Decision

**PUBLIC INVOLVEMENT**

# *What we're studying in this phase*

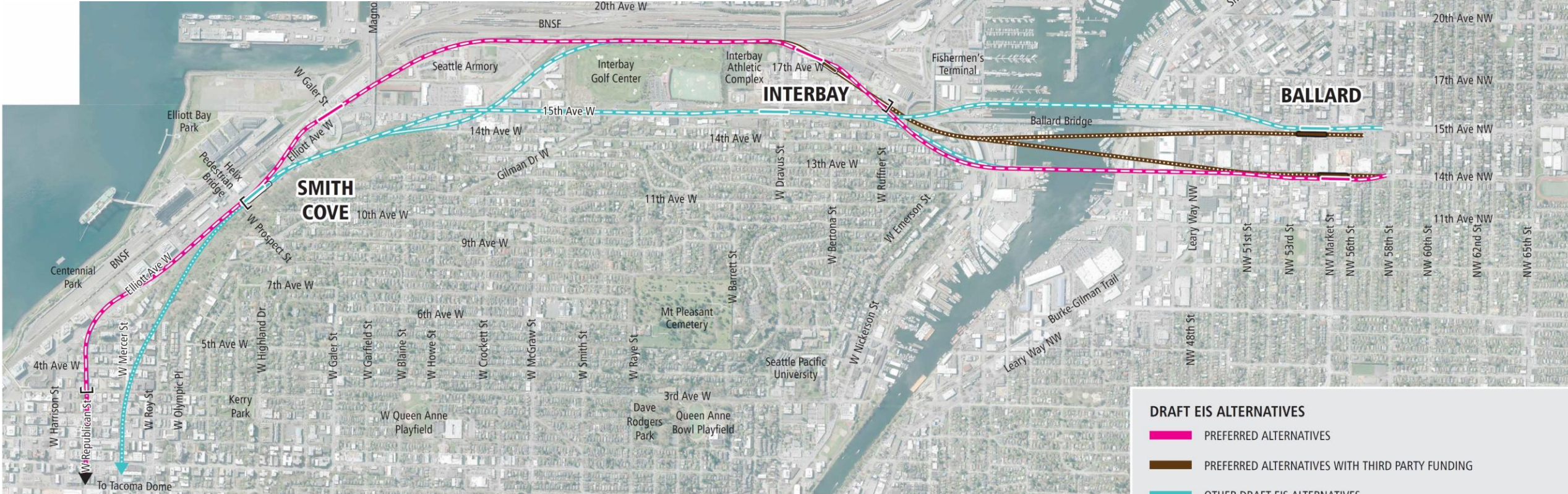
-  Preferred Alternatives
-  Preferred Alternatives with Third-Party Funding
-  Other Draft EIS alternatives





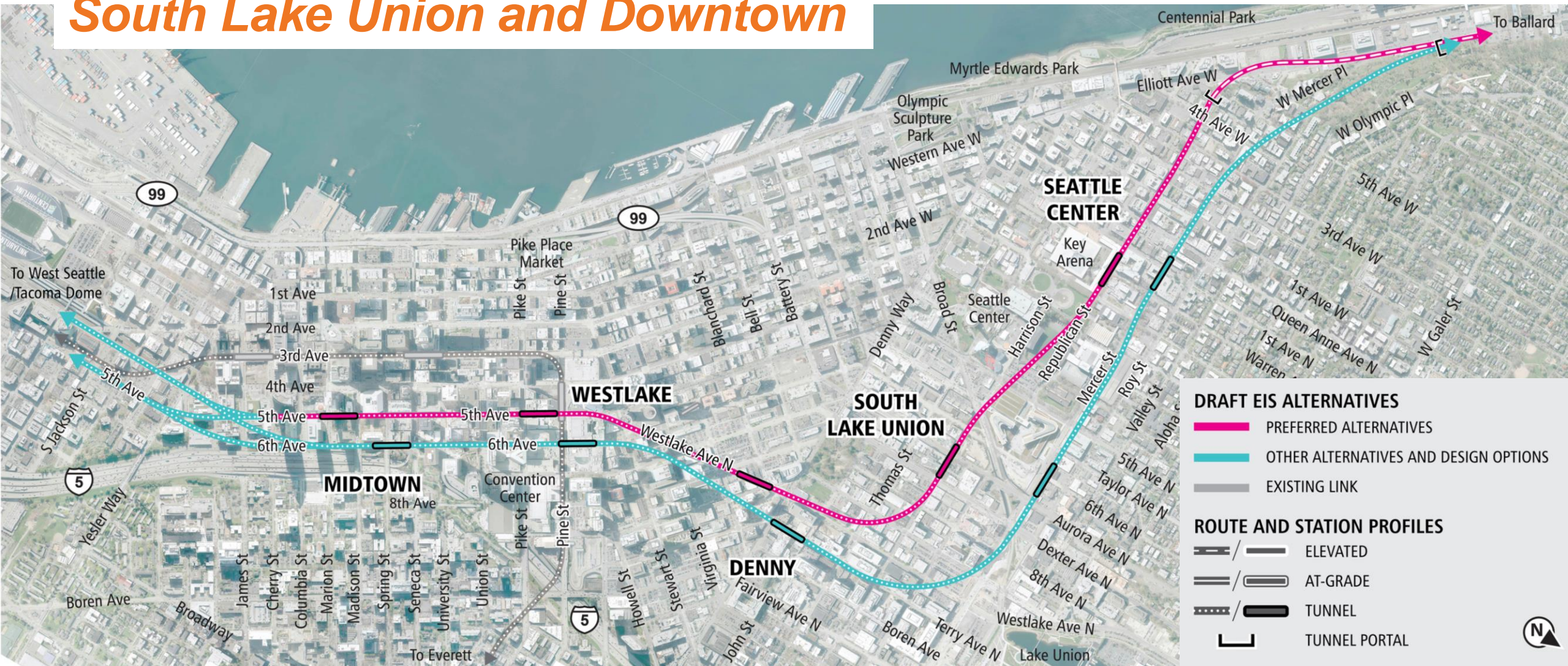
# Draft EIS alternatives

## Smith Cove, Interbay, Ballard





## South Lake Union and Downtown







# Draft EIS alternatives

## Chinatown- International District station

### DRAFT EIS ALTERNATIVES

OTHER DRAFT EIS ALTERNATIVES

### ROUTE AND STATION PROFILES

ELEVATED  
AT-GRADE  
TUNNEL

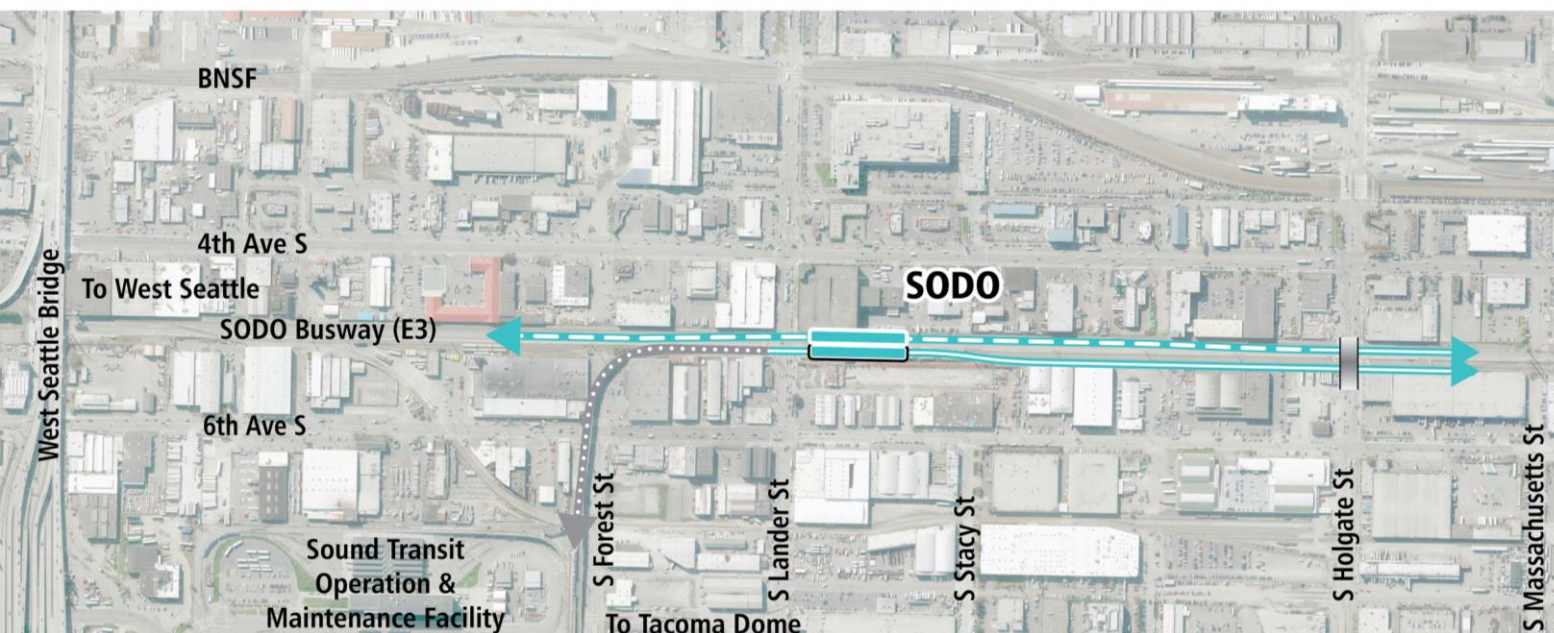
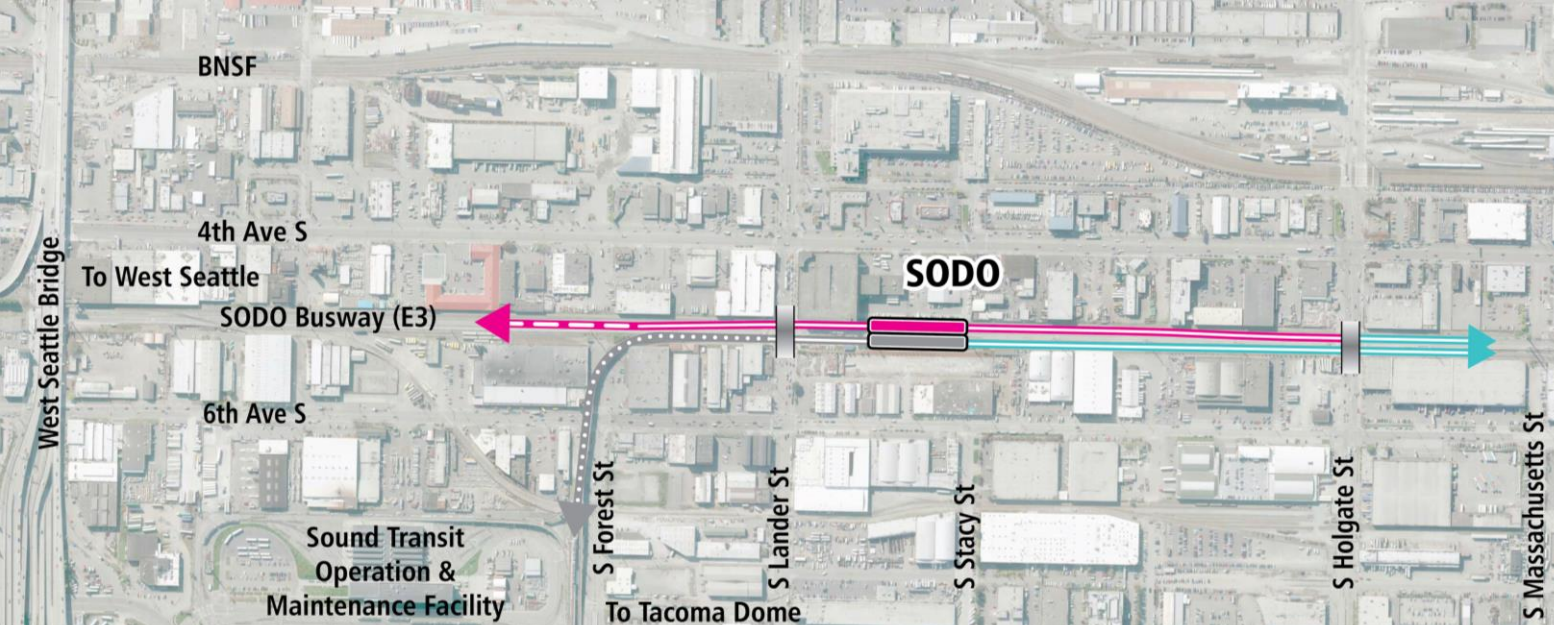
TUNNEL PORTAL  
STREET OVERPASS





# Draft EIS alternatives

## SODO



### DRAFT EIS ALTERNATIVES

- PREFERRED ALTERNATIVES
- OTHER DRAFT EIS ALTERNATIVES

### ROUTE AND STATION PROFILES

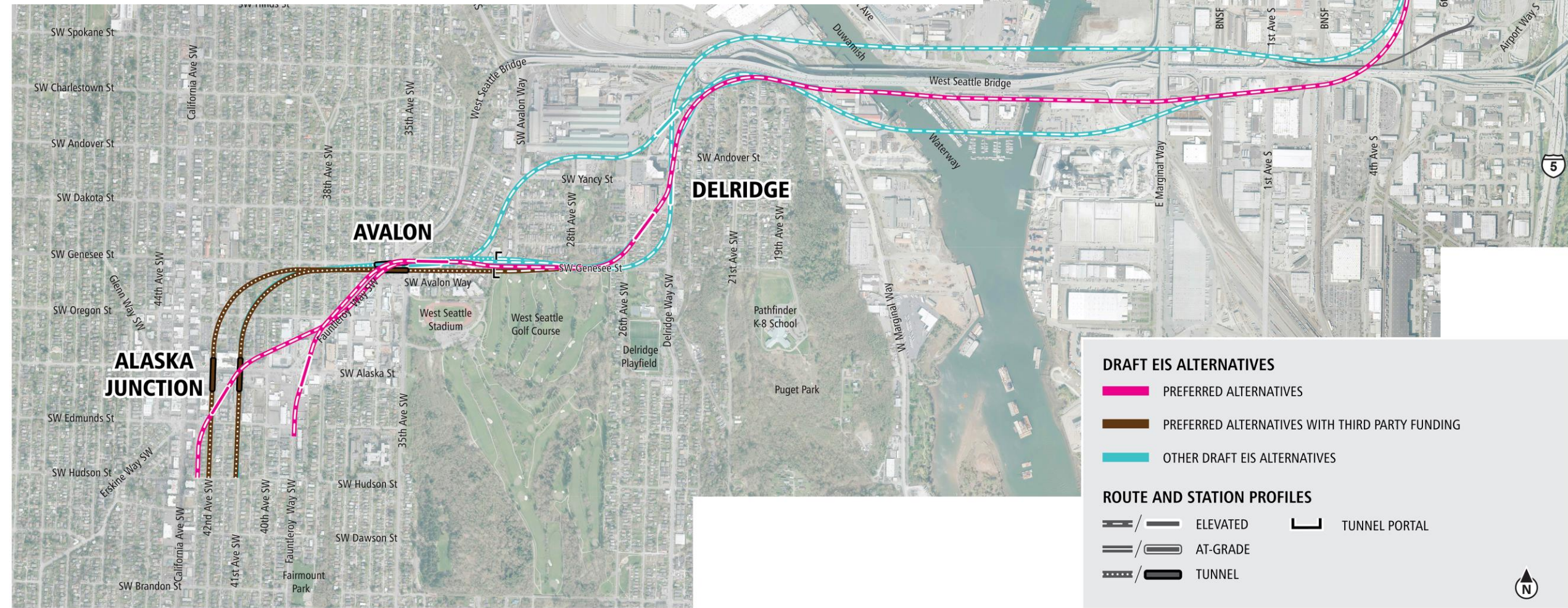
- ELEVATED
- AT-GRADE
- TUNNEL
- TUNNEL PORTAL
- STREET OVERPASS



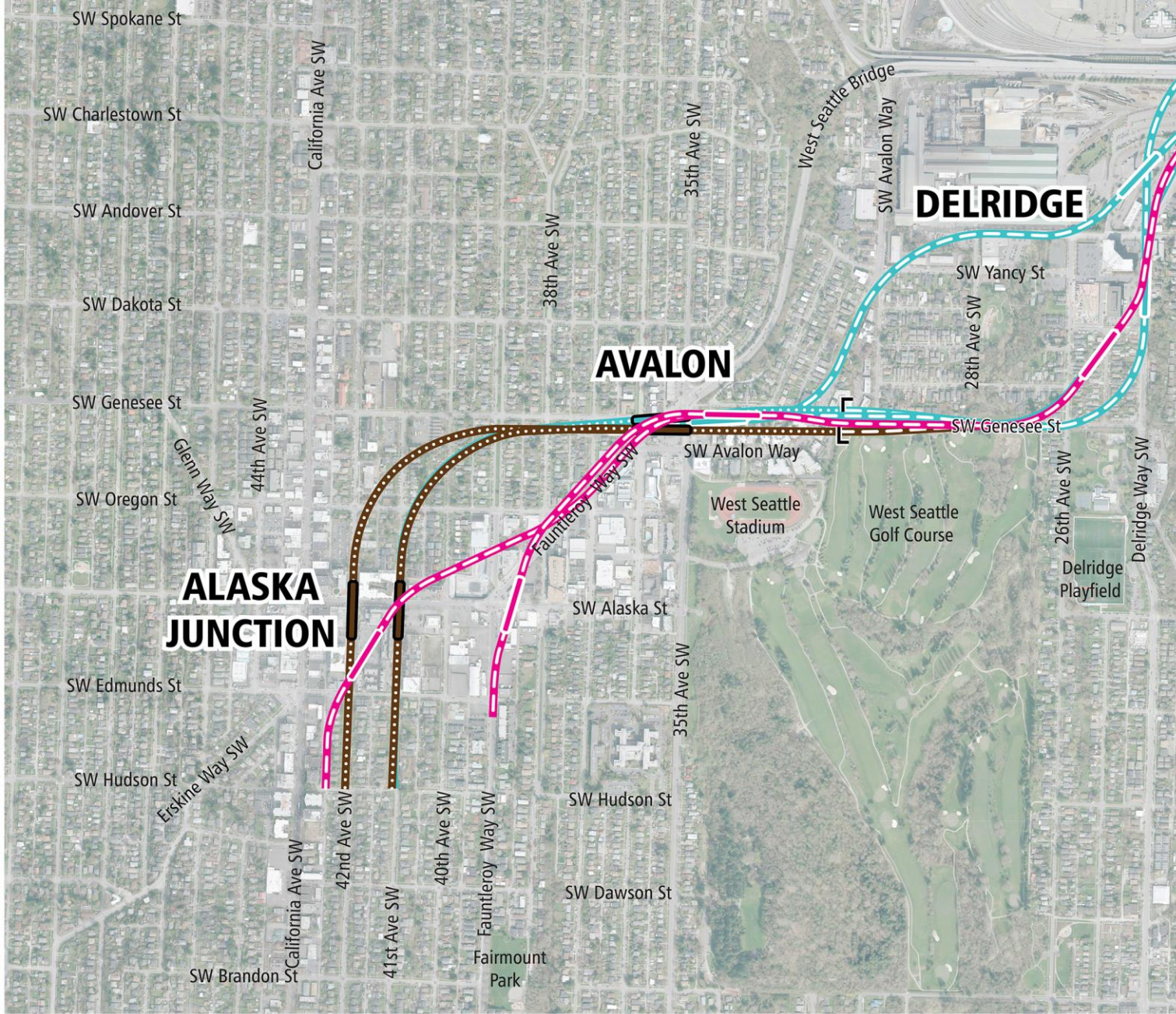


# *Draft EIS alternatives*

## *Duwamish Crossing and West Seattle*














# Draft EIS alternatives

## West Seattle

### DRAFT EIS ALTERNATIVES

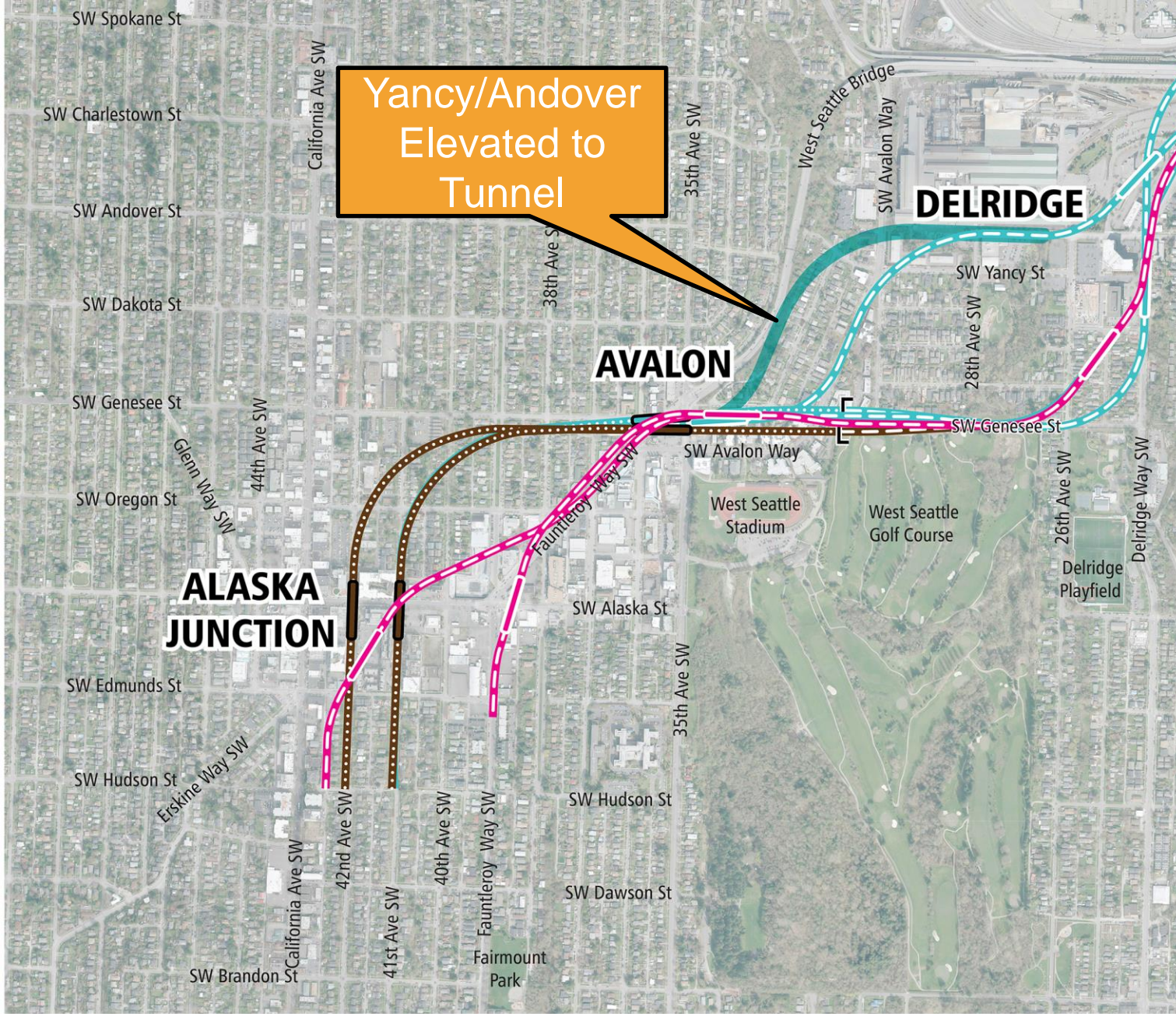
-  PREFERRED ALTERNATIVES
-  PREFERRED ALTERNATIVES WITH THIRD PARTY FUNDING
-  OTHER DRAFT EIS ALTERNATIVES

### ROUTE AND STATION PROFILES

-  ELEVATED
-  AT-GRADE
-  TUNNEL
-  TUNNEL PORTAL



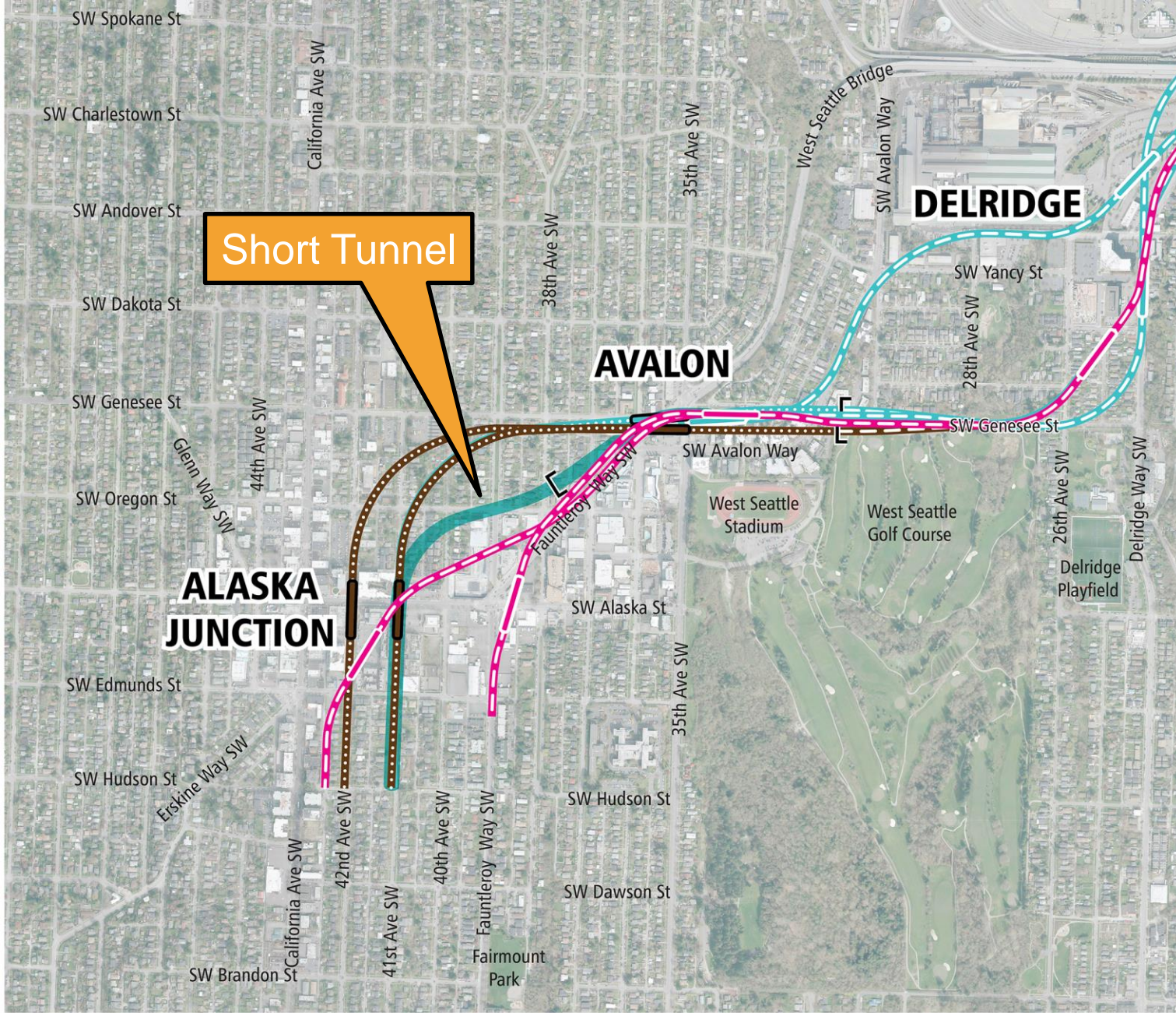




# Draft EIS alternatives

## West Seattle








# Draft EIS alternatives

## West Seattle

### DRAFT EIS ALTERNATIVES

-  PREFERRED ALTERNATIVES
-  PREFERRED ALTERNATIVES WITH THIRD PARTY FUNDING
-  OTHER DRAFT EIS ALTERNATIVES

### ROUTE AND STATION PROFILES

-  /  ELEVATED
-  /  AT-GRADE
-  /  TUNNEL
-  TUNNEL PORTAL

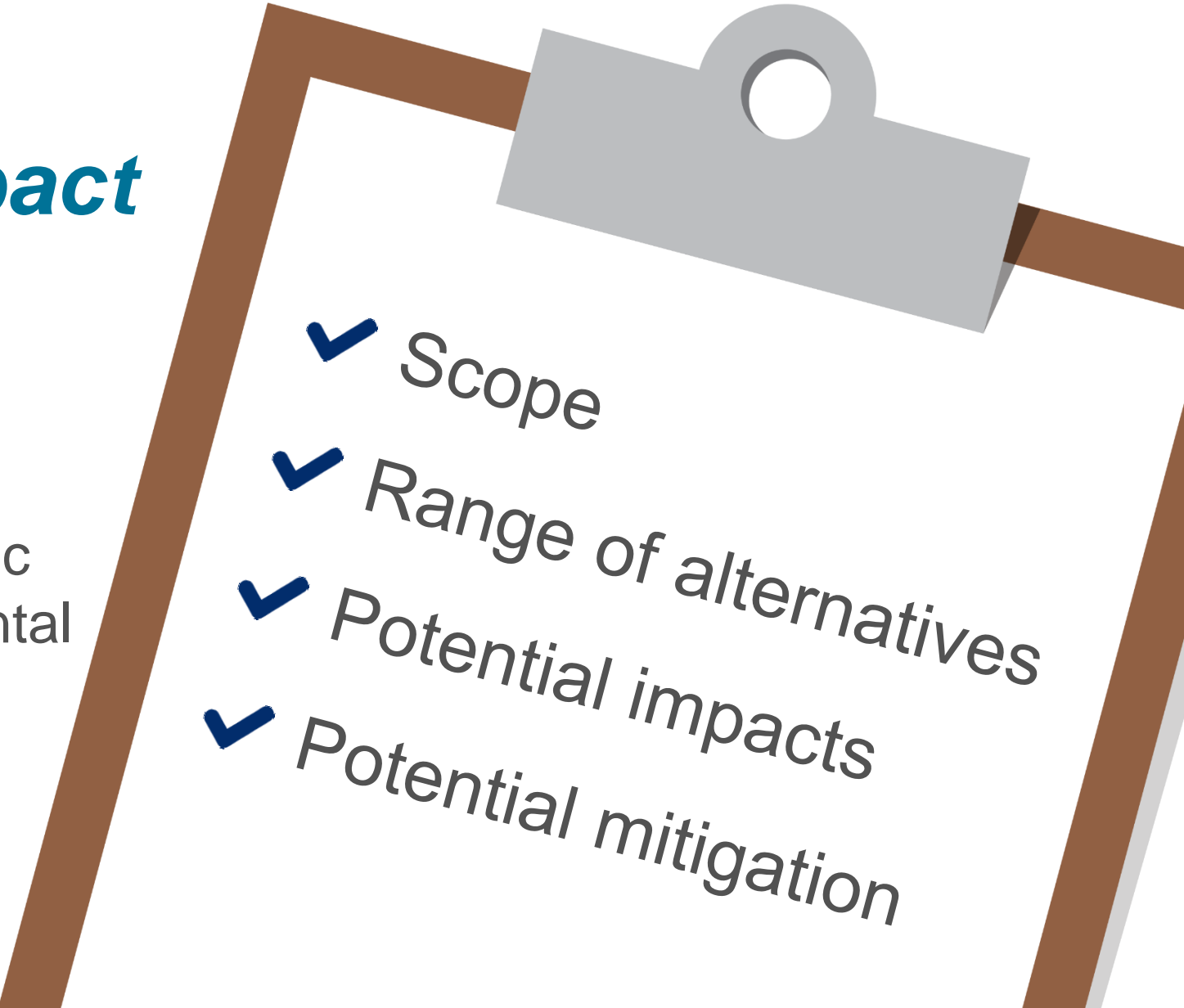


# *Environmental review*

# ***So, what's an Environmental Impact Statement?***

***Or, “EIS” for short.***

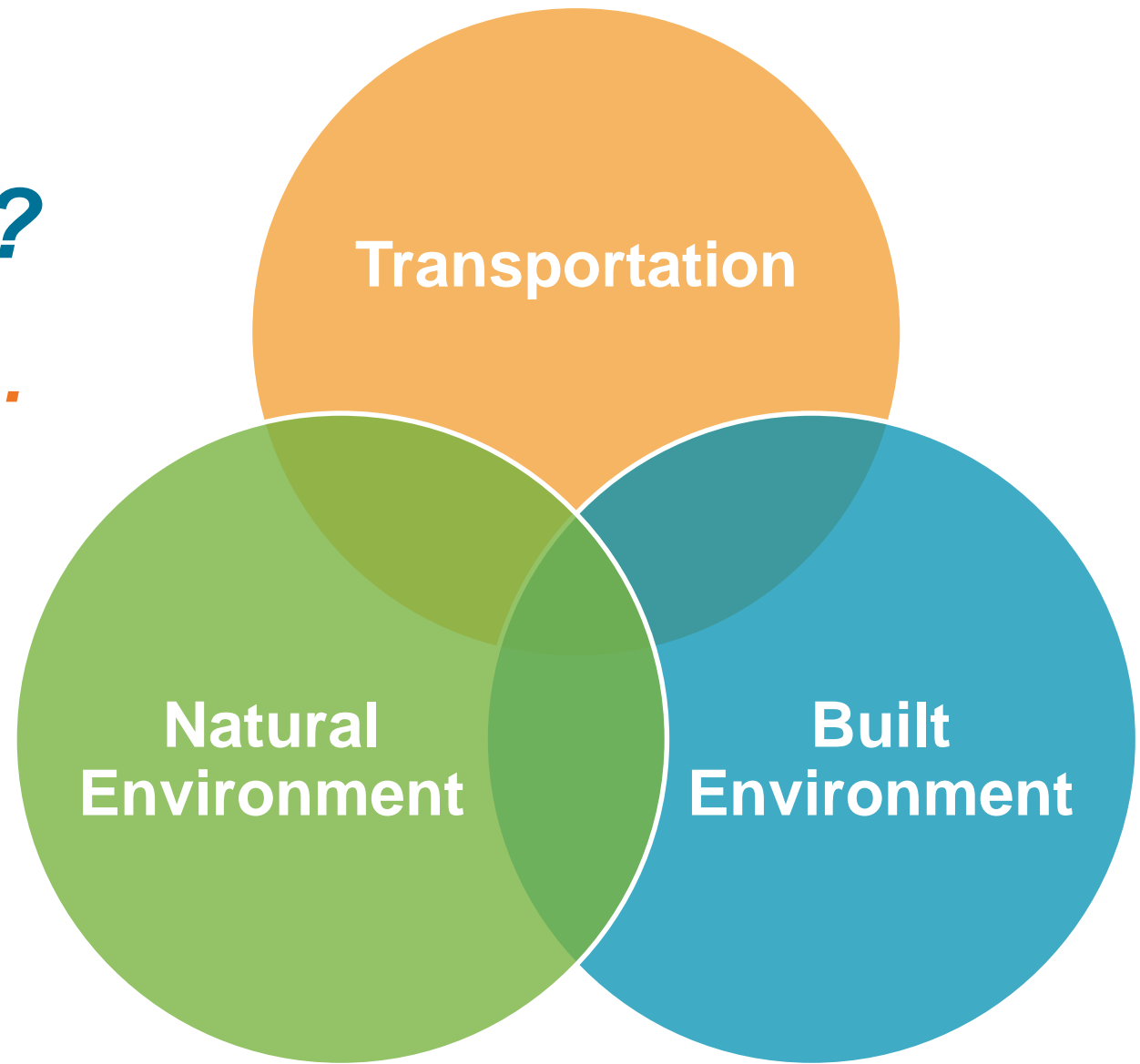
Provides agencies and the public an understanding of environmental consequences and assists in decision-making.

- 
- ✓ Scope
  - ✓ Range of alternatives
  - ✓ Potential impacts
  - ✓ Potential mitigation



# ***What is typically studied in an EIS?***

***How a project affects...***



# ***EIS studies:***

## ***Transportation impacts***

- ✓ Ridership
- ✓ Transit operations
- ✓ Regional and local traffic
- ✓ Non-motorized facilities and modes
- ✓ Freight movement
- ✓ Marine navigation
- ✓ Parking

# ***EIS studies:***

## ***Natural environment impacts***

- 
- ✓ Air quality and greenhouse gas emissions
  - ✓ Ecosystems and fish and wildlife habitat
  - ✓ Water resources
  - ✓ Geology and soils

# ***EIS studies:***

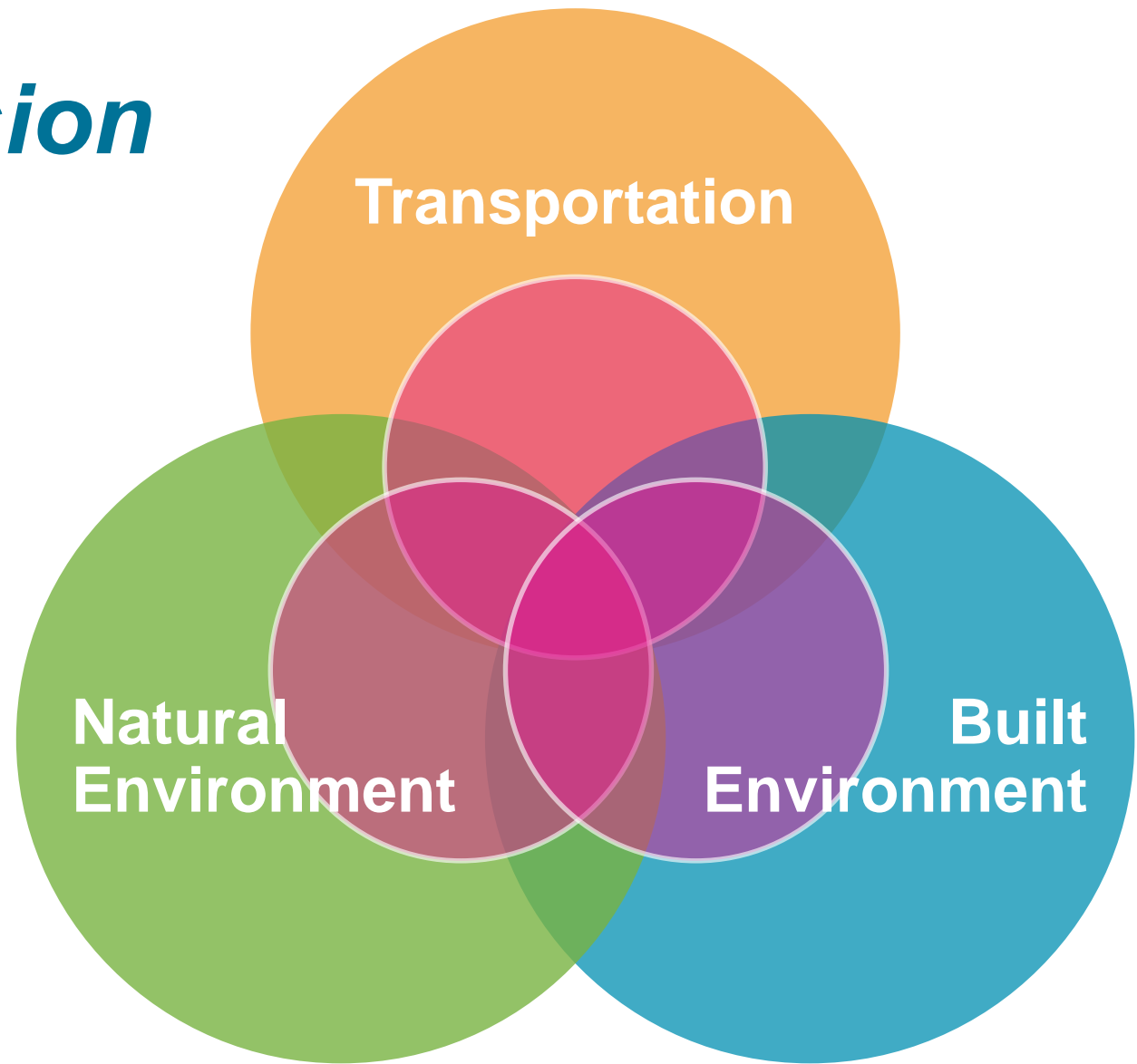
## ***Built environment impacts***

- ✓ Noise and vibration
- ✓ Economic effects
- ✓ Visual resources
- ✓ Parks resources
- ✓ Land use
- ✓ Acquisitions, displacements and relocations



# ***Equity and inclusion***

***Environmental justice  
focus within each  
area of the EIS***



# ***EIS studies:***

## ***Built environment impacts***

- ✓ Energy use
- ✓ Hazardous materials
- ✓ Public services / utilities
- ✓ Impacts on low income and minority populations
- ✓ Cultural, historic and archaeological resources
- ✓ Neighborhoods and community facilities

## ***EIS studies:***

### ***Environmental justice***

- ✓ Describes demographics
- ✓ Evaluates whether project disproportionately impacts minority and low-income communities
- ✓ Considers potential project benefits such as improved access to opportunity
- ✓ Documents what we hear from outreach efforts

 **VOTER  
APPROVAL**

**2016**

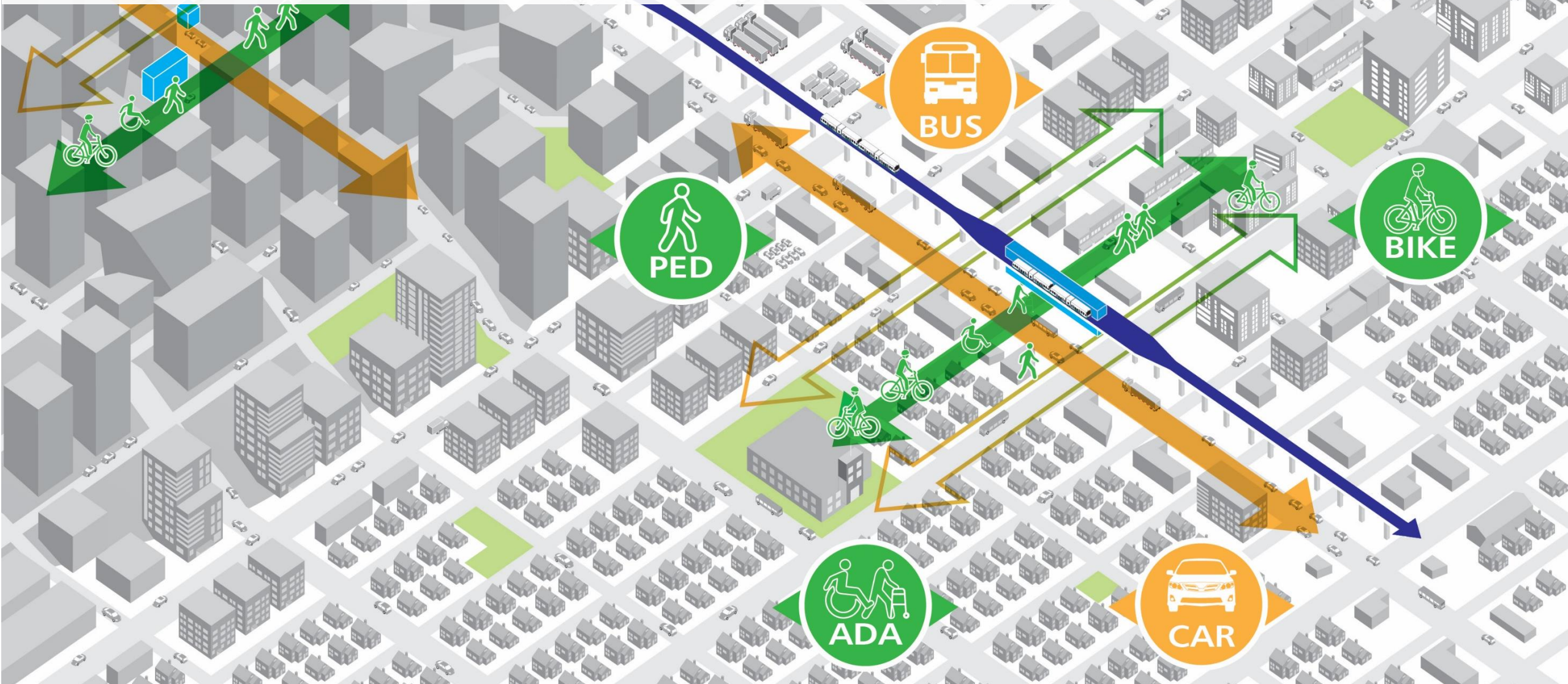


 **DESIGN**

# ***Station planning***



# Stations serving communities



# Core responsibilities



**SOUNDTRANSIT**

- ✓ Routes and station locations
- ✓ Light rail guideway and station design
- ✓ Environmental review



**City of Seattle**

- ✓ Community planning and station access
- ✓ Land use and zoning
- ✓ Street and right-of-way use

# Core responsibilities



**SOUNDTRANSIT**

- ✓ Routes and station locations
- ✓ Light rail guideway and station design
- ✓ Environmental review

**Co-planning  
stations with  
communities**



**City of Seattle**

- ✓ Community planning and station access
- ✓ Land use and zoning
- ✓ Street and right-of-way use



# Partnership focus



Station



Station context



**City of Seattle**



Station area

# Station context framework

## Scope

- ✓ Planning framework encompassing station footprint and adjacent blocks
- ✓ Guides access, circulation and relationship of station to surrounding community



# Station context framework

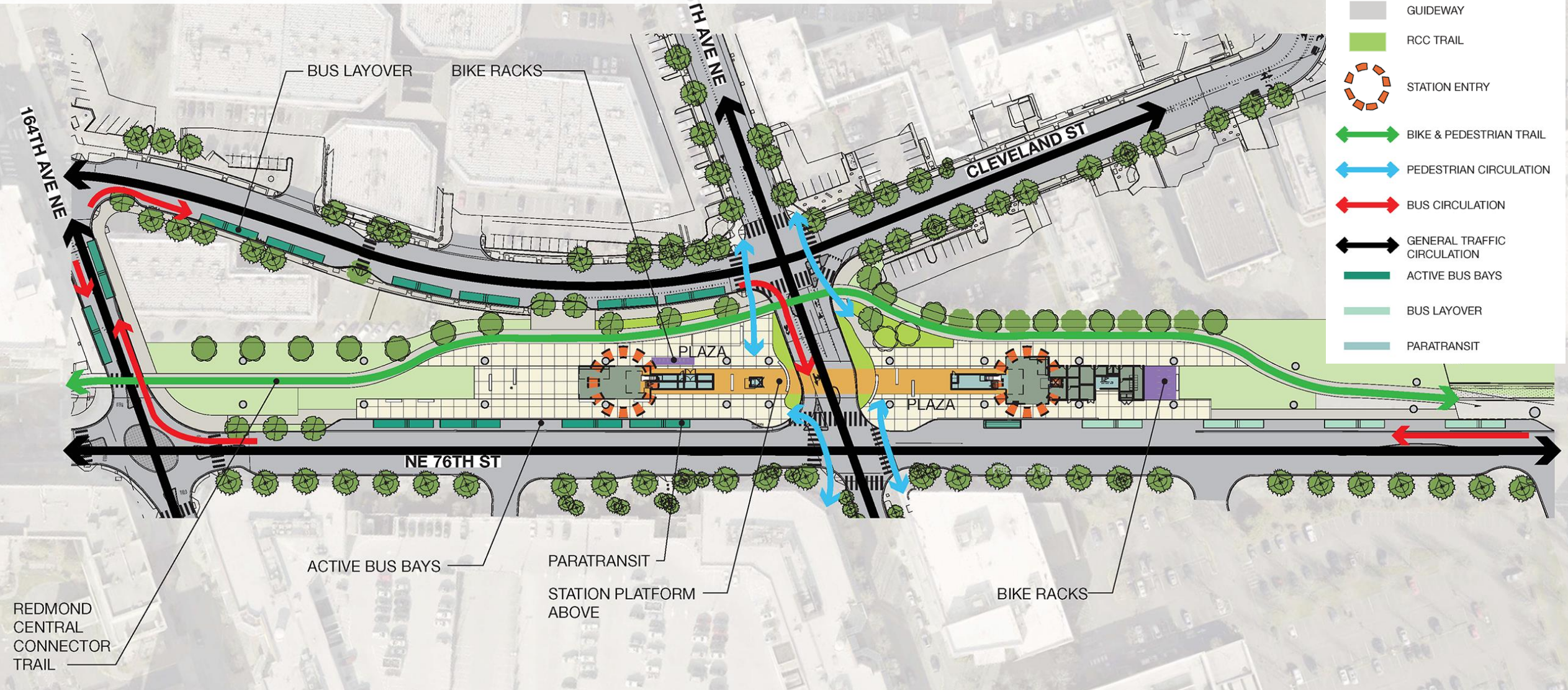
## Purpose

- ✓ Identify and resolve design issues earlier through collaboration with communities
- ✓ Clarify zones of responsibility between agencies for station area investments
- ✓ Contribute to streamlined permitting and project delivery

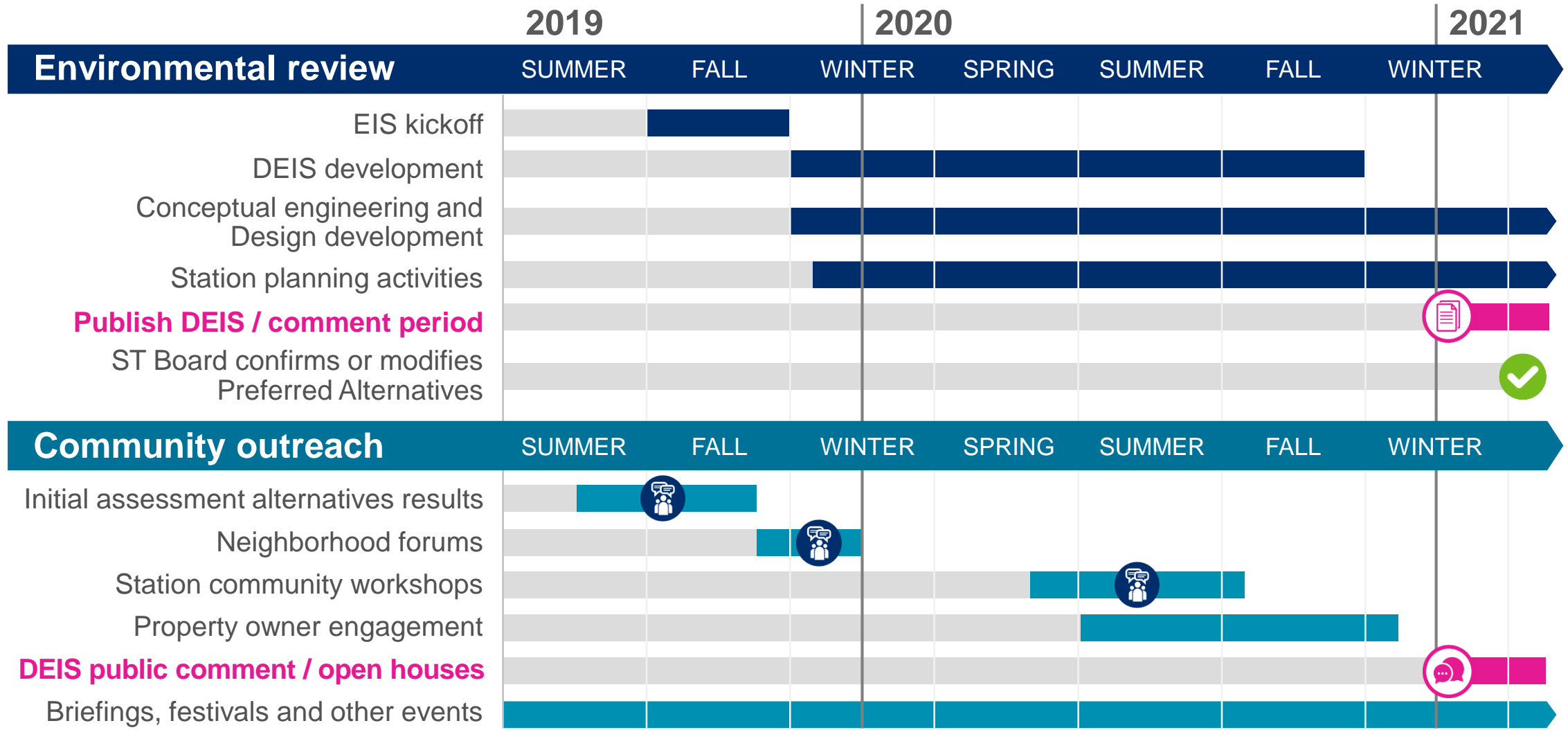




# Station context framework



# Community outreach and collaboration



# *Share with your group*

Q: What are the important places  
in your neighborhood?

Q: How do you travel around the area today?

Q: How could stations best serve your community?

 *wsblink@soundtransit.org*  
*(206) 903-7229*



*soundtransit.org/wsblink*

