

West Seattle and Ballard

Link Extensions

Initial Assessment
Alternatives:
Station Visualizations

September 2019



/ West Seattle / Ballard



This map shows our representative project, or our starting point for further route and station location studies. Since the project's kick-off in early 2018, we've been collecting public feedback to develop, study, and narrow down alternatives.

Purpose

In May 2019, the Sound Transit Board identified alternatives to study in the Draft EIS. The Board also directed Sound Transit to conduct an initial assessment on several alternatives that were suggested during the scoping comment period (February - March 2019). The following visualizations of the Delridge and SODO station areas have been developed to provide information on initial assessment route and station alternatives for the West Seattle and Ballard Link Extensions and to better answer questions of scale and relationships to the larger neighborhood context. Urban and architectural design elements have been advanced to a limited conceptual level in order to illustrate differences among alternatives at key elevated locations.

The views have been selected to show specific elements of the design and the related existing conditions. The following pages include two sets of visualizations:

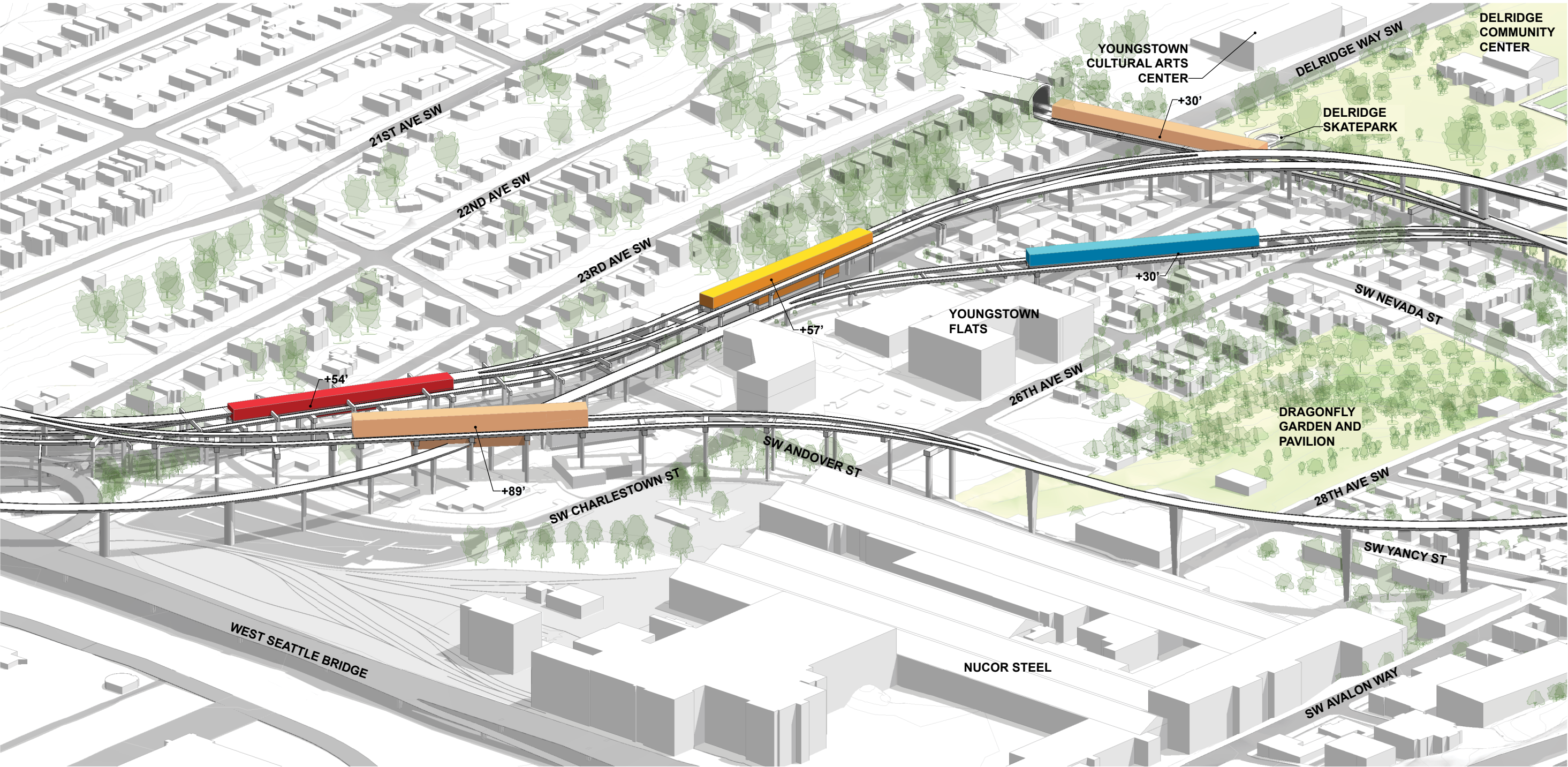
- **Station Area Overview:** Compares the different alternatives in each station area.
- **Station Options:** Illustrates how the elevated station options fit into the neighborhood context.



An aerial photograph of West Seattle, Washington, showing a dense urban grid, green spaces, and a coastline. A semi-transparent orange rounded rectangle is centered over the middle of the image, containing the text 'West Seattle' in white. A thick green line runs horizontally across the middle of the image, passing behind the orange box. Another thick green line runs horizontally across the bottom of the image, also passing behind the orange box. The background image is a high-resolution aerial view of the city, with streets, buildings, and parks visible. The water of the Duwamish River is visible on the left side of the image.

West Seattle

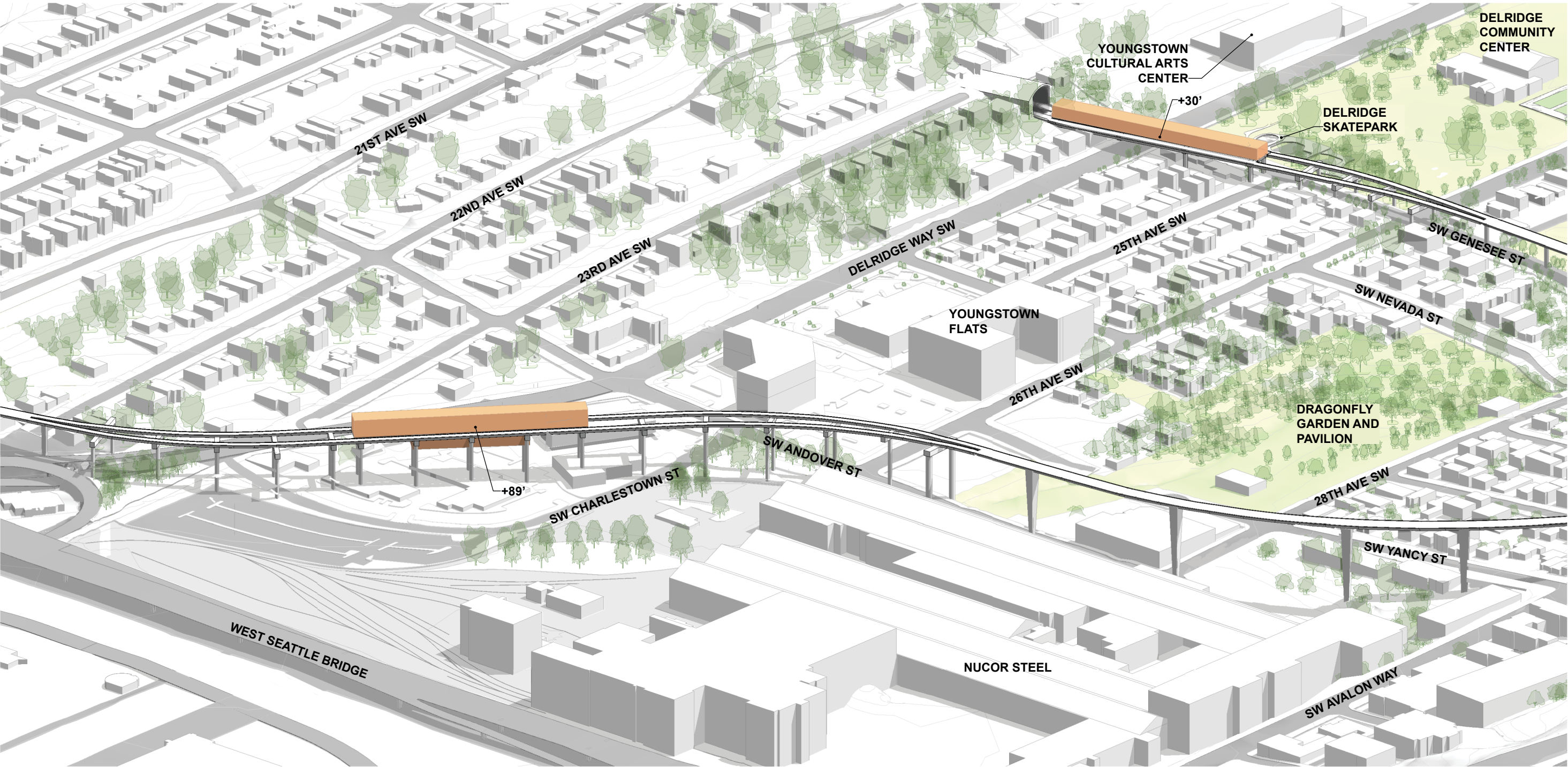
West Seattle: Delridge Station area overview



 VIEW LOOKING SE

This visualization is based on limited conceptual design and intended to inform comparison between alternatives.

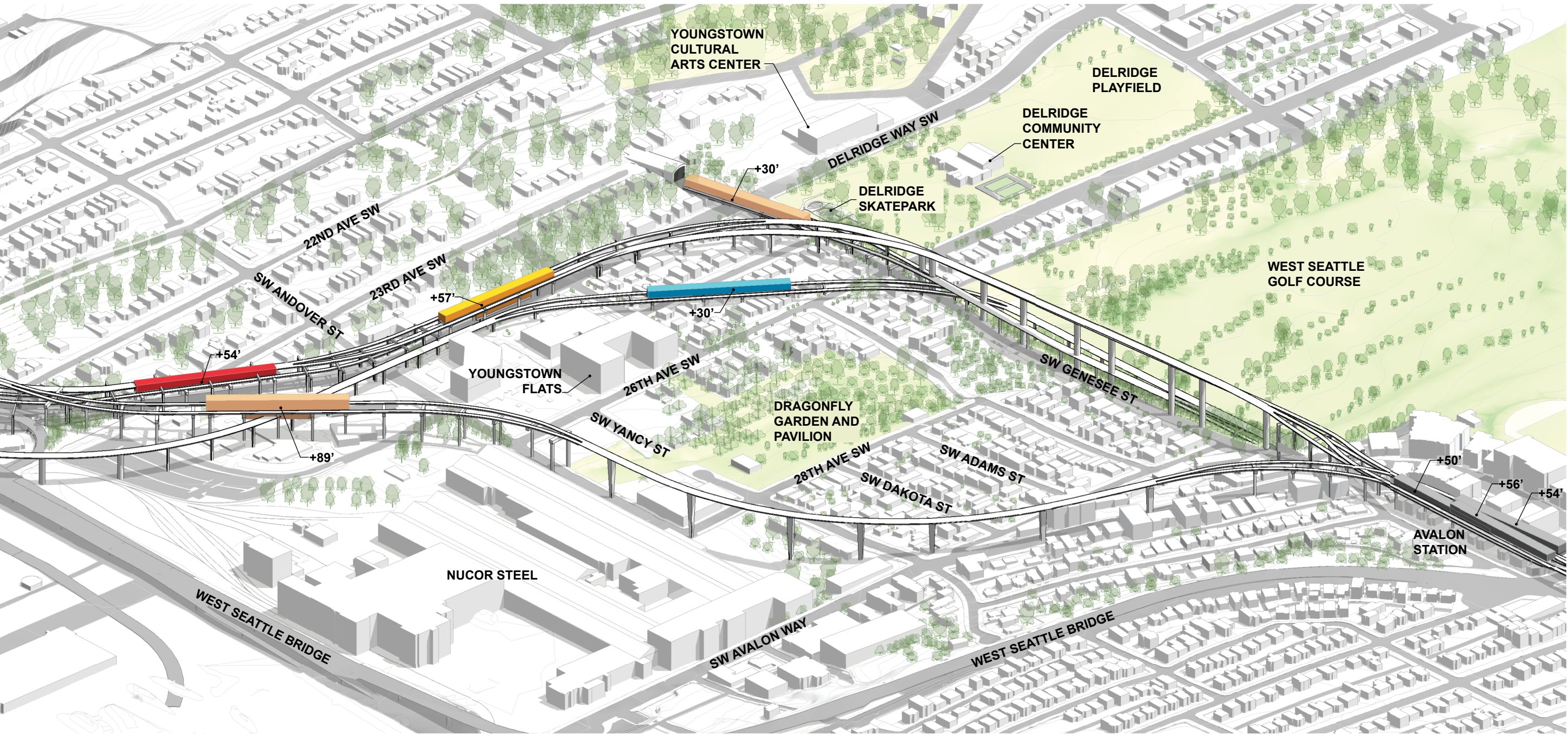
West Seattle: Delridge Station area overview



 VIEW LOOKING SE

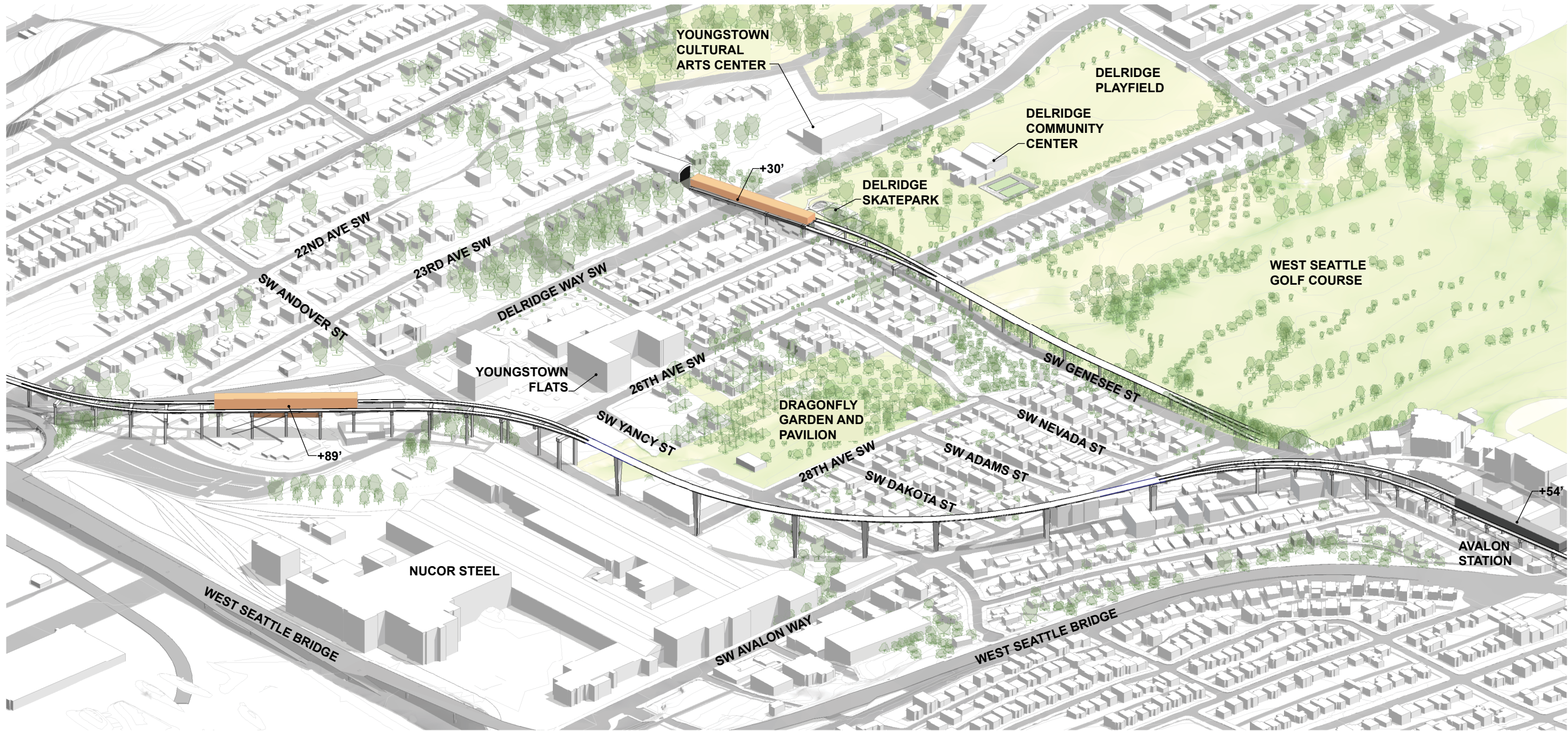
This visualization is based on limited conceptual design and intended to inform comparison between alternatives.

West Seattle: Delridge Station area overview



 VIEW LOOKING SE

West Seattle: Delridge Station area overview



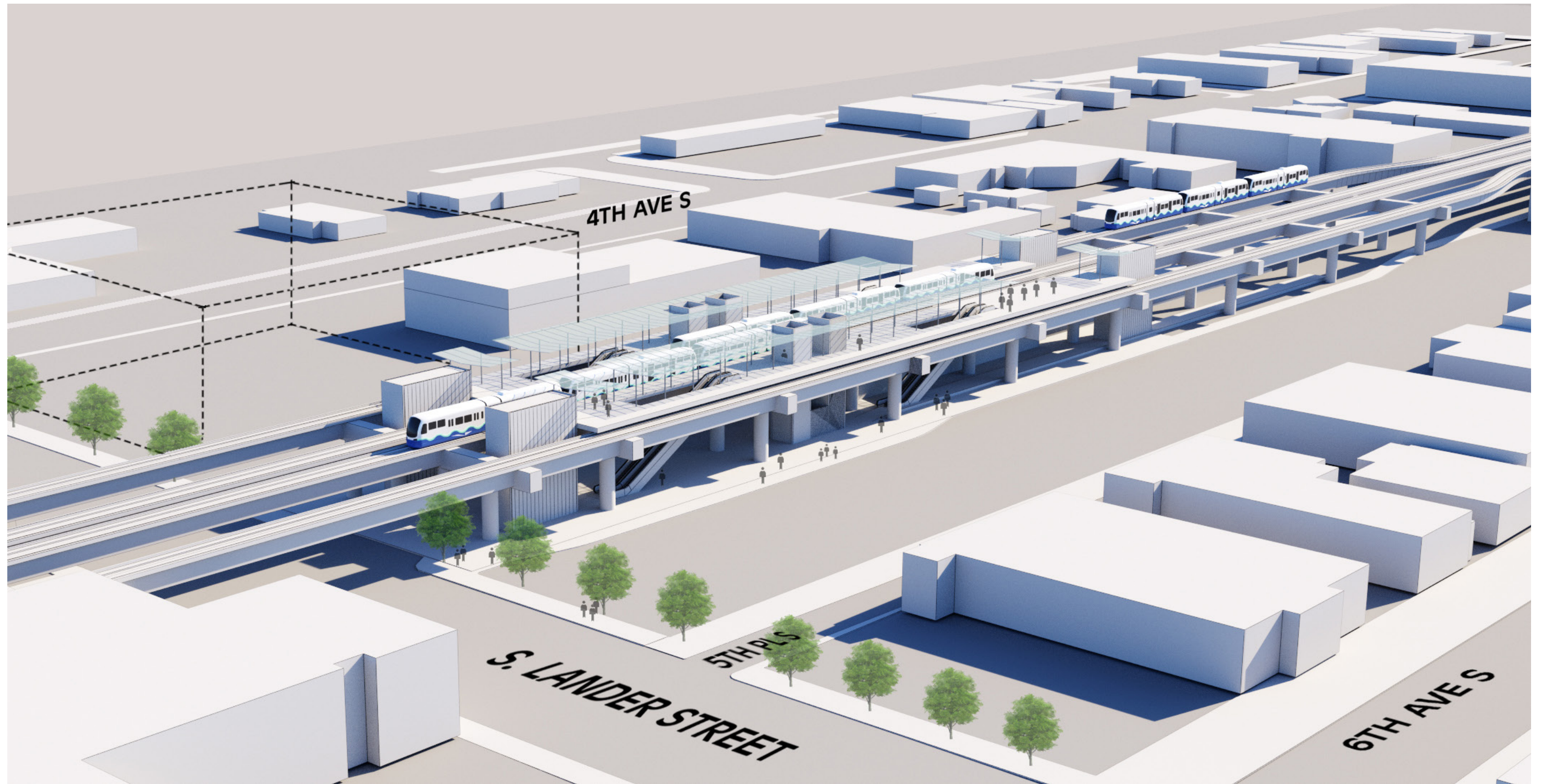
 VIEW LOOKING SE

This visualization is based on limited conceptual design and intended to inform comparison between alternatives.

An aerial photograph of Seattle, Washington, showing the city's layout, including the waterfront, downtown area, and surrounding green spaces. A semi-transparent blue overlay covers the entire image. A red rounded rectangle is positioned in the center, containing the word 'SODO' in white, bold, italicized capital letters. A thick red line extends from the left side of the rectangle, and a thick green line extends from the bottom right corner of the rectangle.

SODO

SODO: Double elevated station (initial assessment alternative)



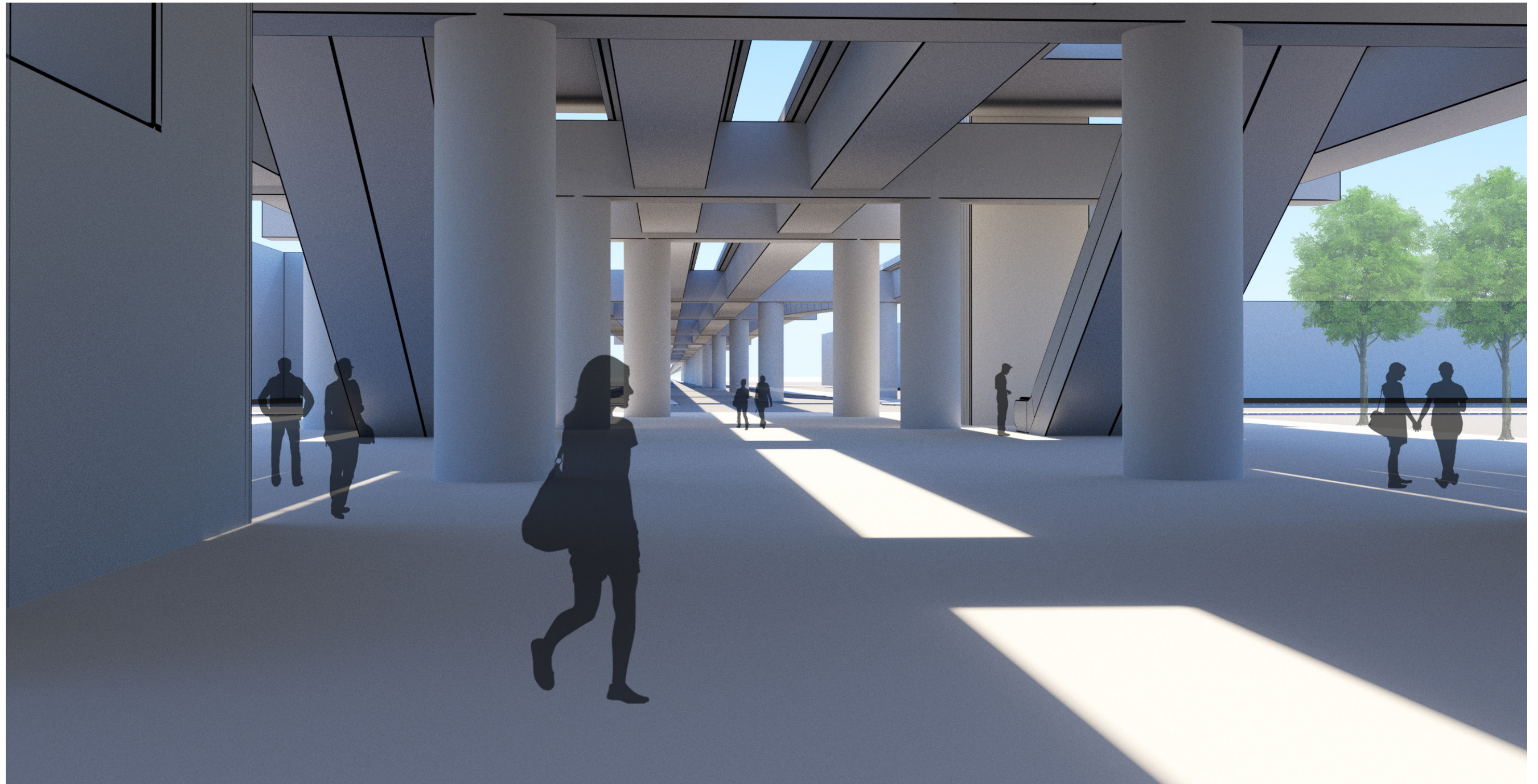
 VIEW LOOKING NW

SODO: Double elevated station (initial assessment alternative)



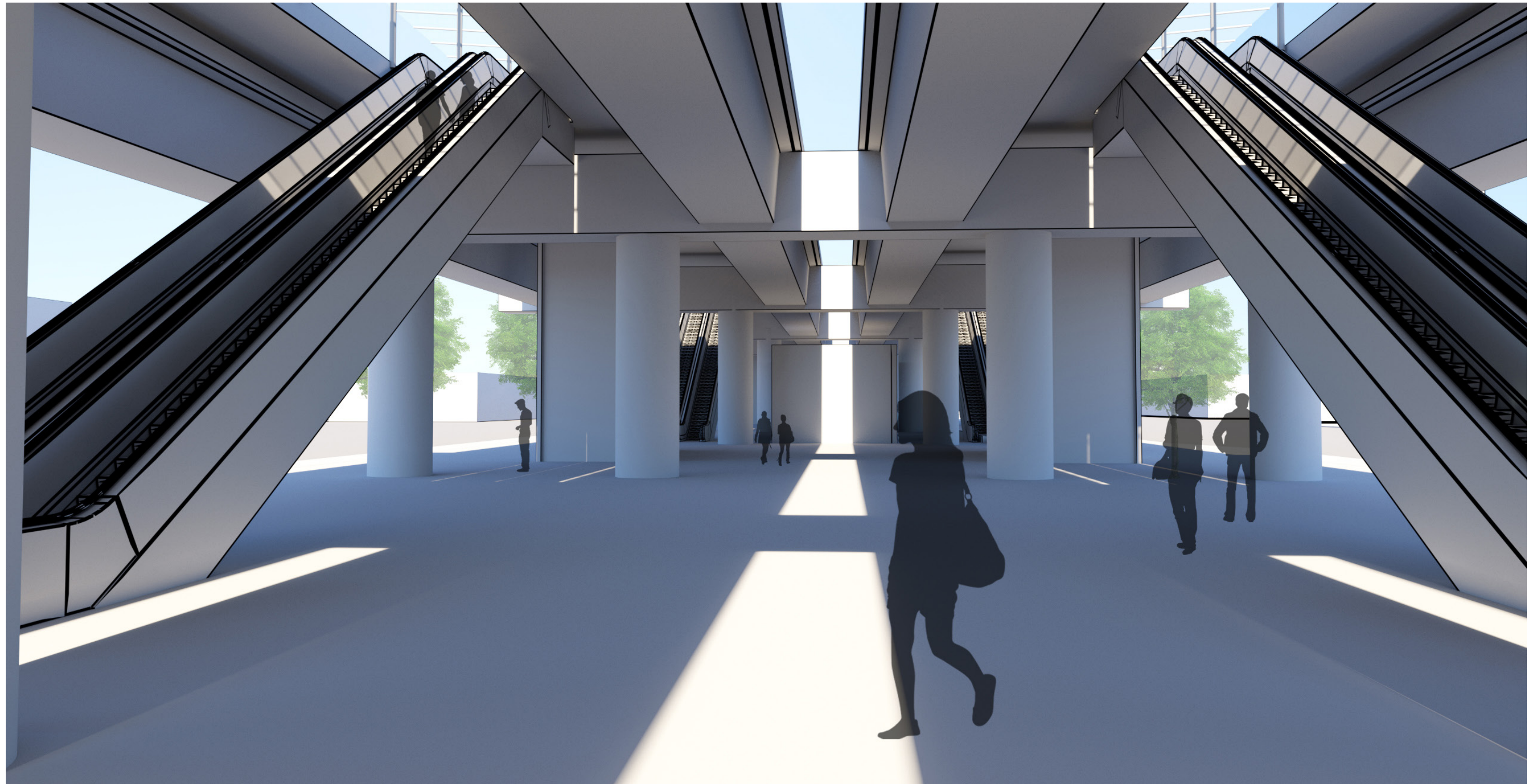
N  VIEW LOOKING E

SODO: Double elevated station (initial assessment alternative)



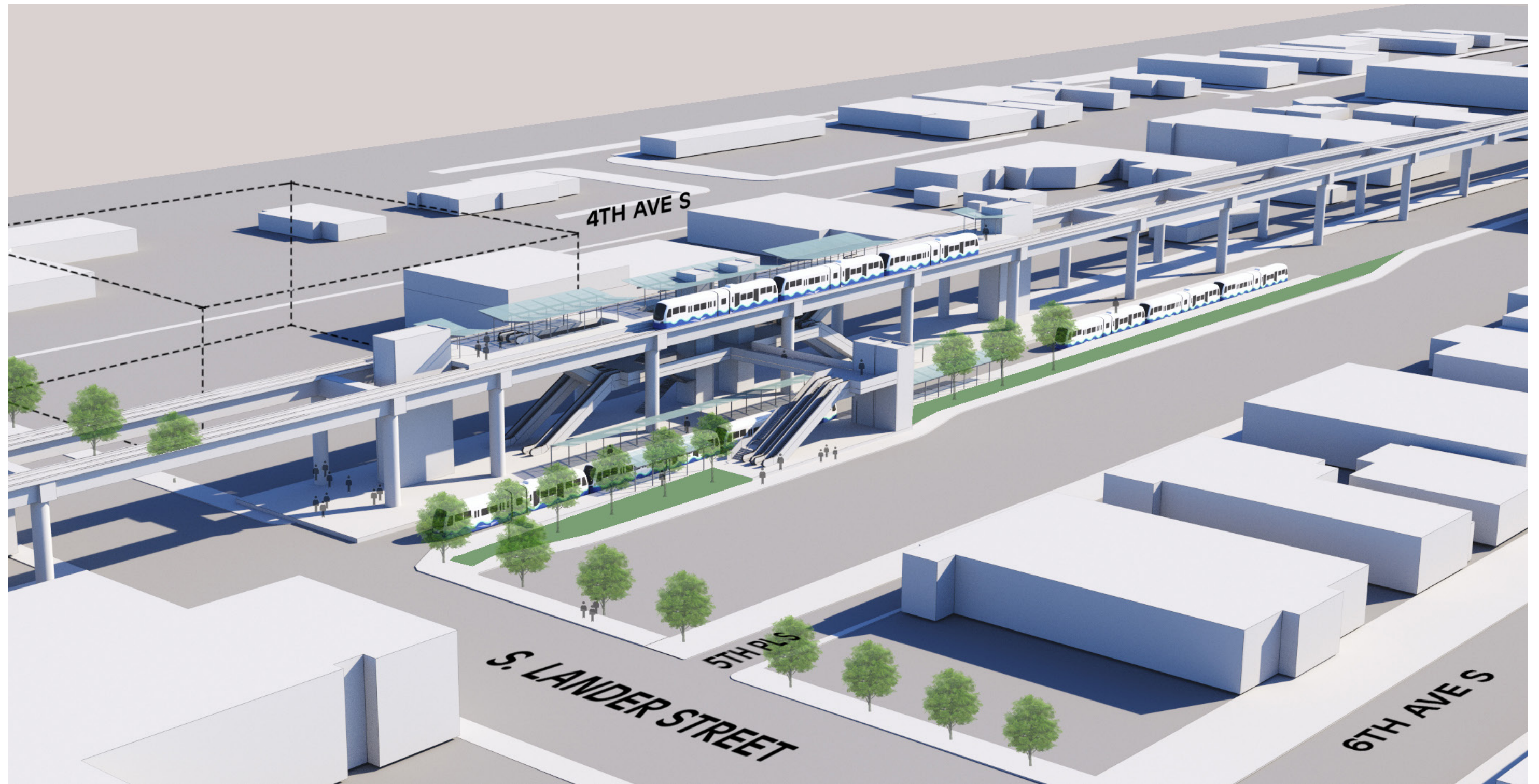
 VIEW LOOKING S

SODO: Double elevated station (initial assessment alternative)



 VIEW LOOKING N

SODO: Partial elevated station (initial assessment alternative)



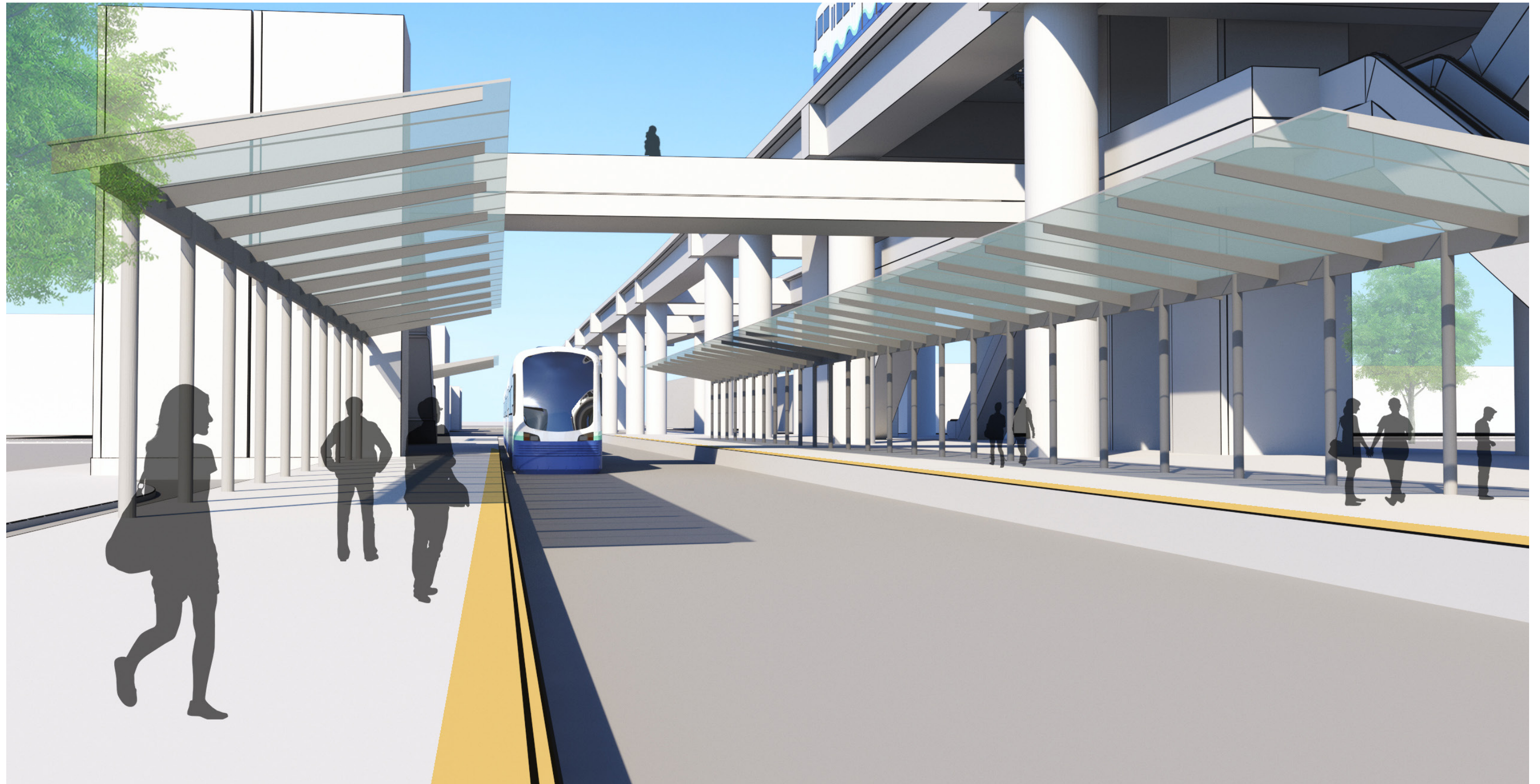
 VIEW LOOKING NW

SODO: Partial elevated station (initial assessment alternative)



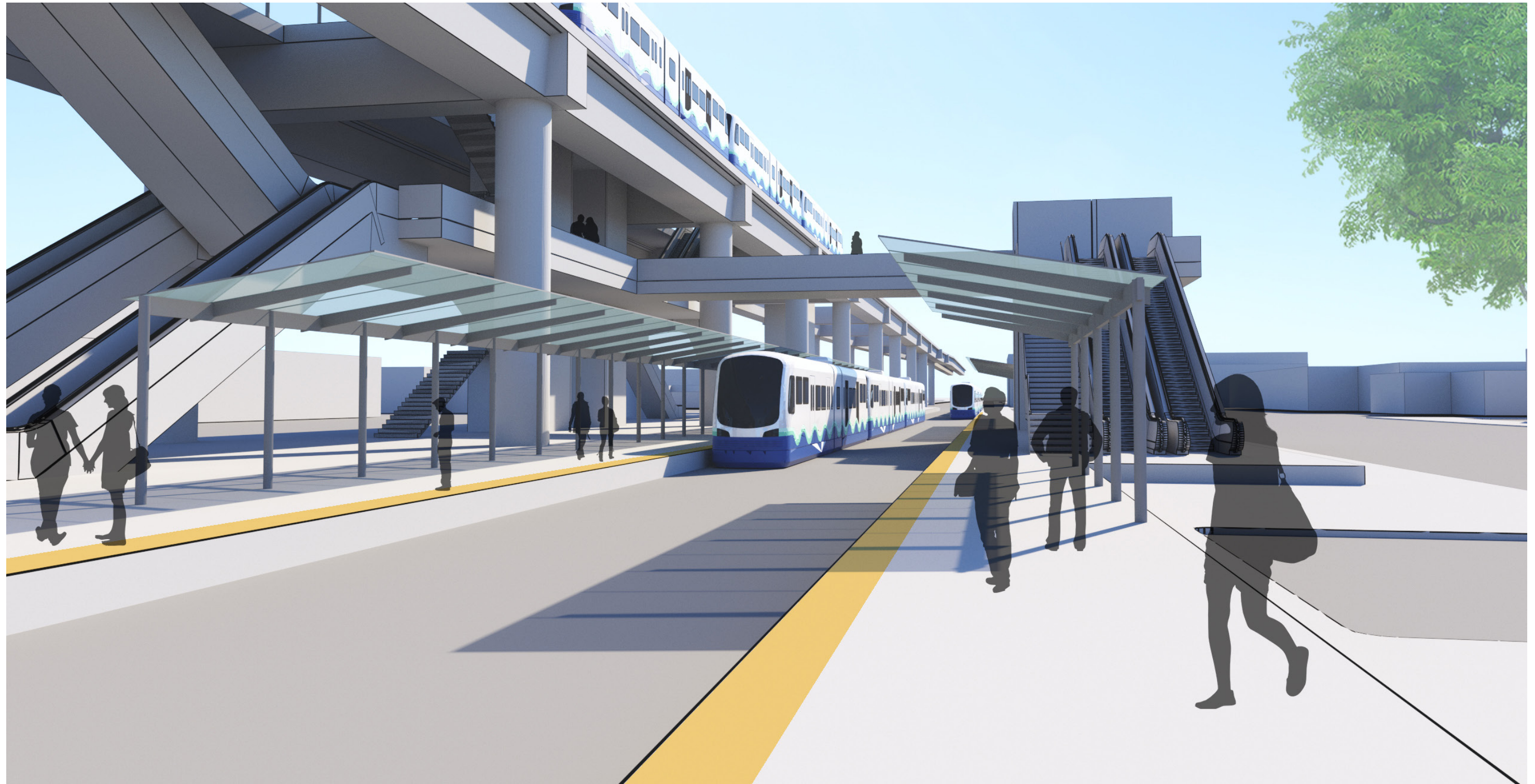
N  VIEW LOOKING E

SODO: Partial elevated station (initial assessment alternative)



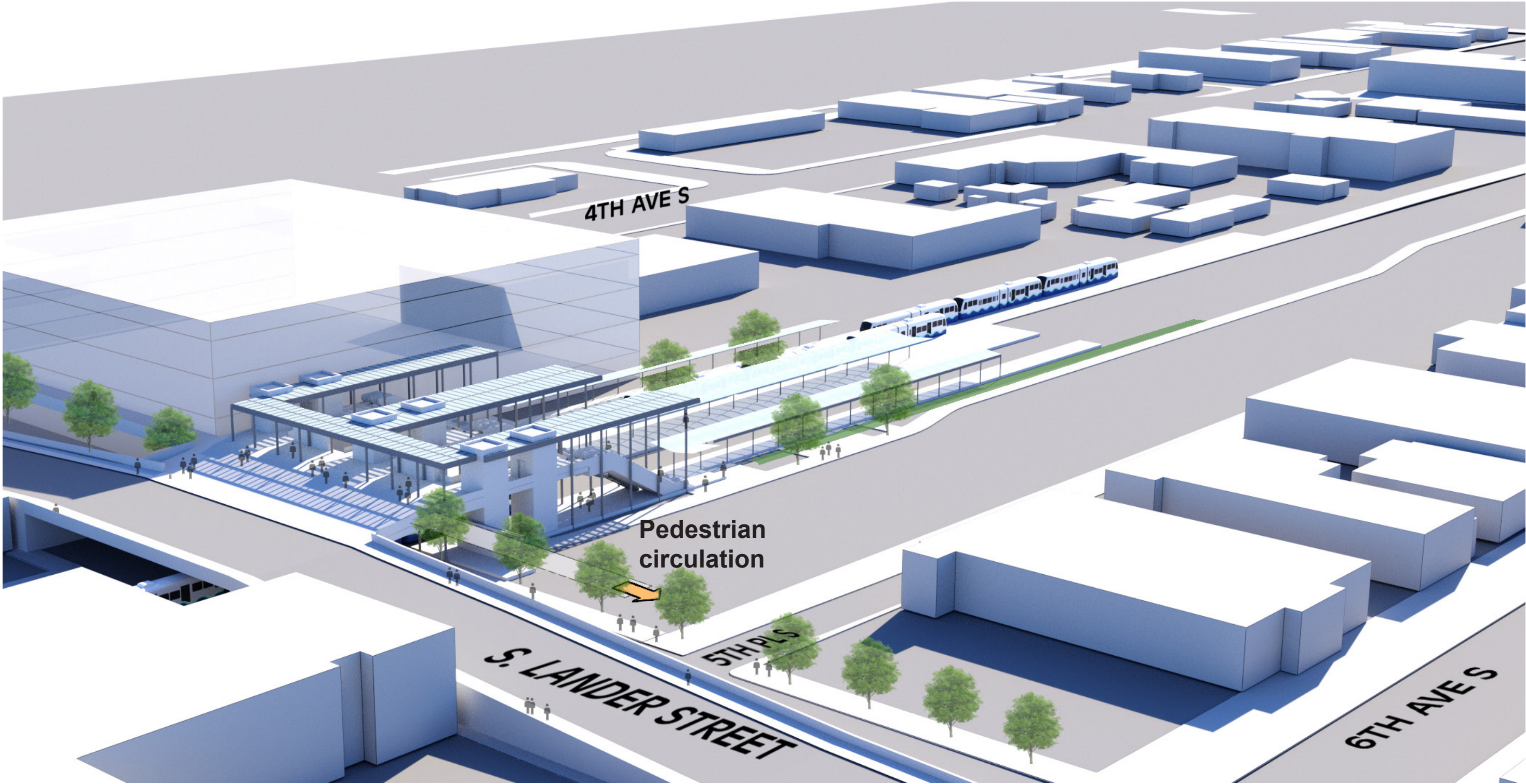
 VIEW LOOKING S

SODO: Partial elevated station (initial assessment alternative)



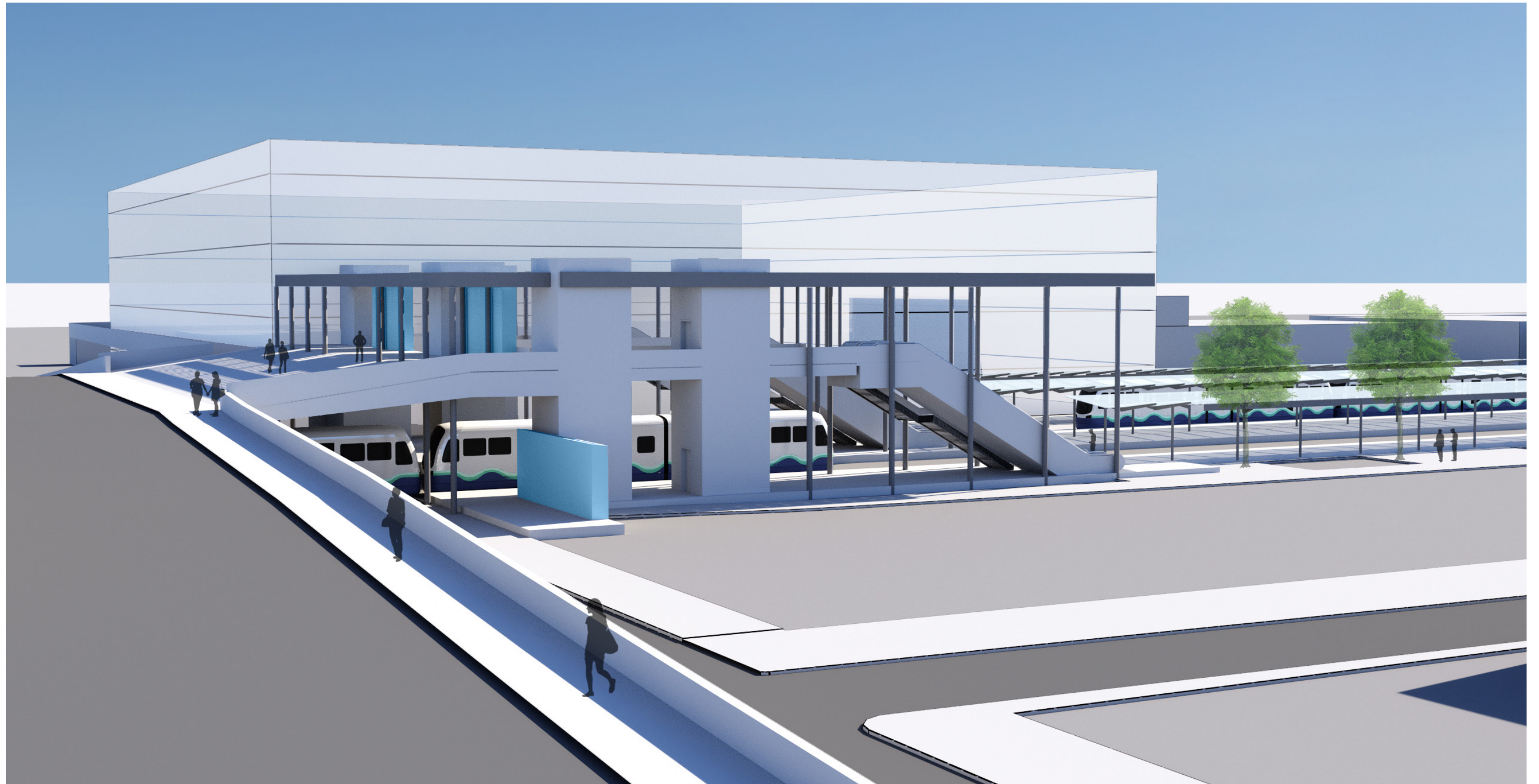
N
VIEW LOOKING N

SODO: At-grade station



 VIEW LOOKING NW

SODO: At-grade station



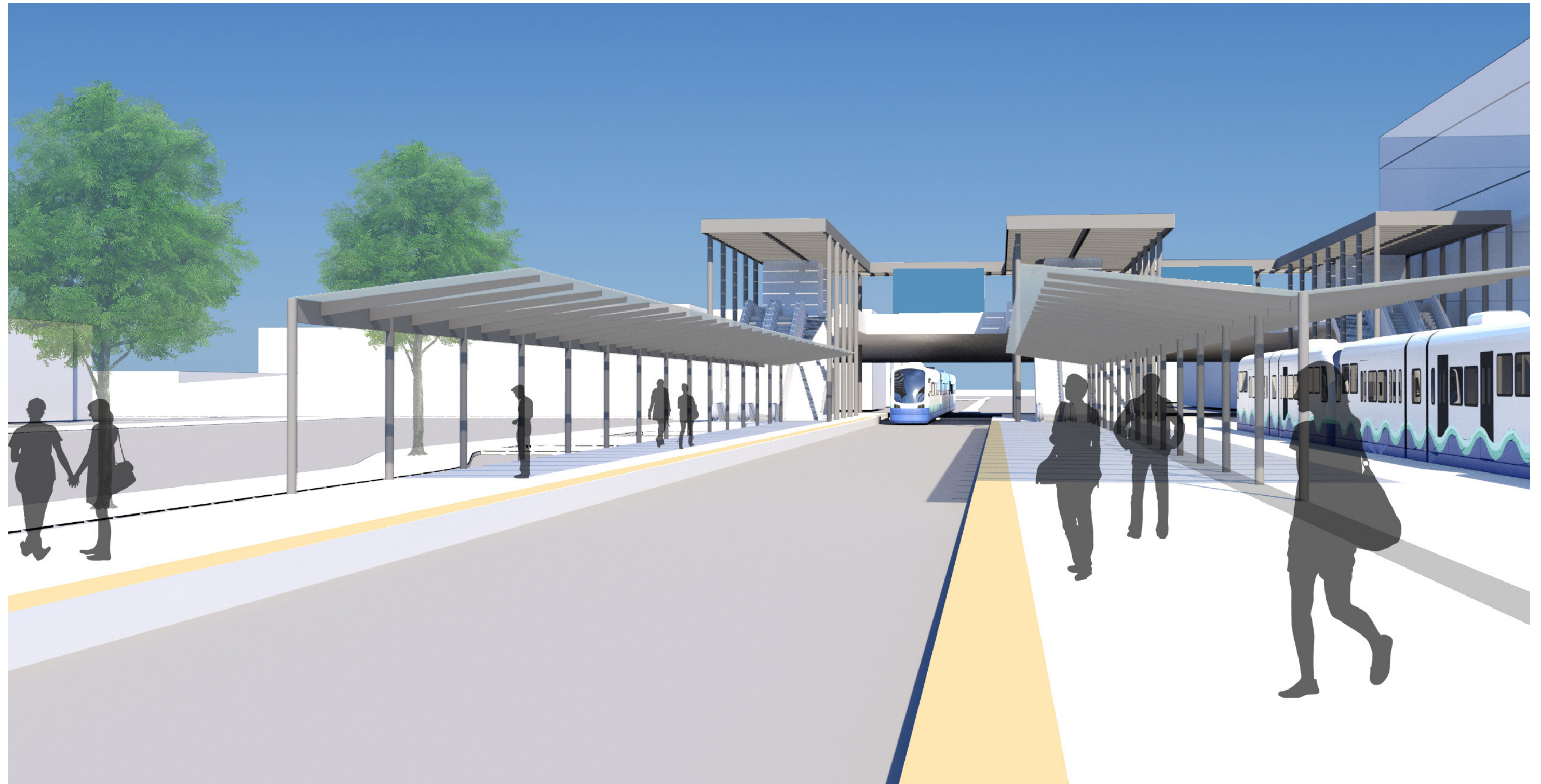
 VIEW LOOKING NW

SODO: At-grade station



 VIEW LOOKING N

SODO: At-grade station



 VIEW LOOKING S