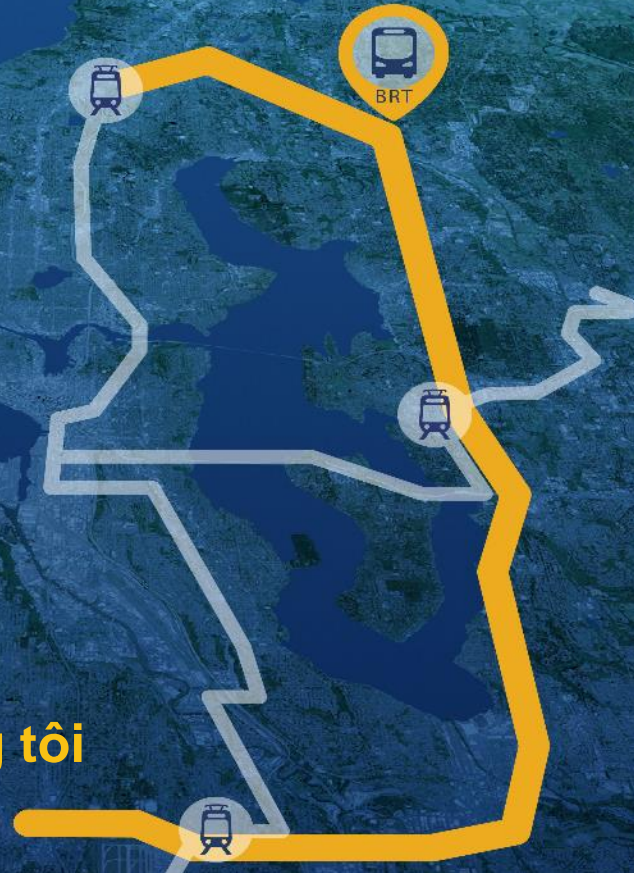


# I-405 Bus Rapid Transit

**Welcome!**  
**¡Bienvenidos!**  
**Chào mừng các bạn!**

**Thank you for joining us.**  
**Gracias por acompañarnos.**  
**Cảm ơn vì đã tham gia cùng chúng tôi**



July 2018

# *Tonight's agenda*

**6:00 Open house**

**6:30 Presentation**

**7:00 Open house**

- Visit stations
- Speak with staff
- Share your comments

**8:00 Adjourn**



# Who is Sound Transit?

We plan, build and operate regional transit systems and services to improve mobility in urban areas of King, Pierce and Snohomish counties.



- ST Express Bus
- Sounder Commuter Rail
- Link Light Rail
- Bus Rapid Transit (coming 2024!)

# ST future service

- Establish Bus Rapid Transit (BRT) to the north, east and south of Lake Washington.
- Build a light rail network extending from Everett to Tacoma, and from Seattle to Redmond and Issaquah.
- Improve access and expand parking at stations.





# Connecting the region

- **I-405 BRT** will run from Lynnwood to Bellevue and Bellevue to Burien
- **SR 522/NE 145th BRT** will run from Shoreline to Woodinville
- **I-405 BRT** and **SR 522/NE 145th BRT** will connect in Bothell
- Connections to **Link light rail** in Lynnwood, Shoreline, Bellevue, and Tukwila



# What is *Bus Rapid Transit*?

**BRT** is a **fast, frequent, and reliable** transit system.



Transit improvements



Sheltered stations



Off-board fare payment



All-door bus entry and exit



Specialized buses

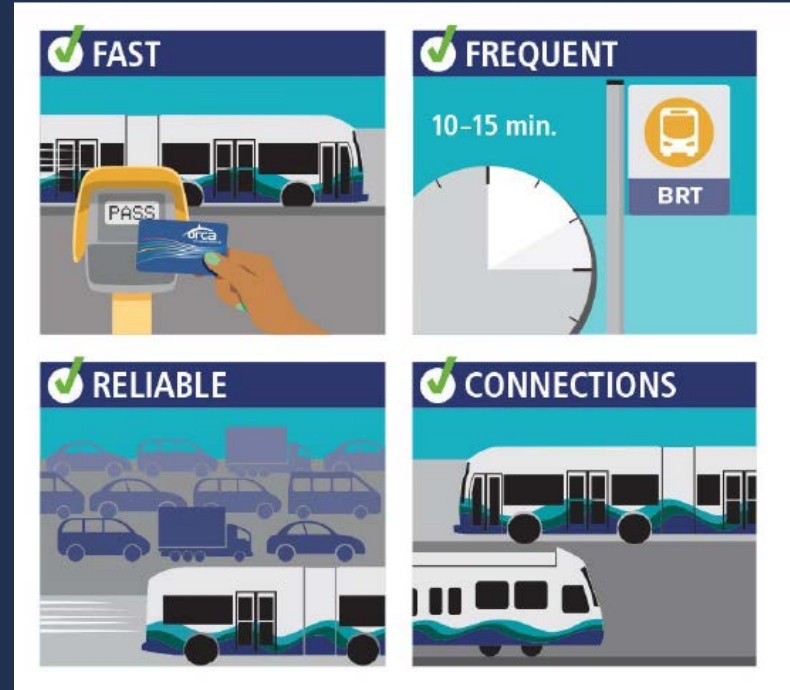


Convenient all-day service

# Fast, frequent, reliable service

## *I-405 BRT planned service:*

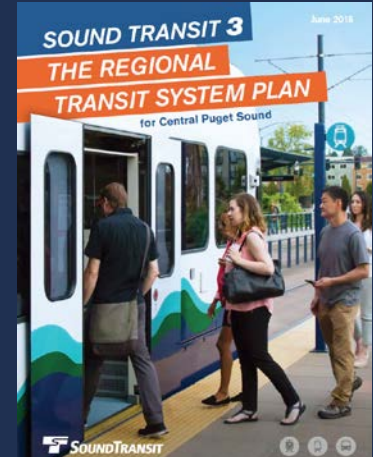
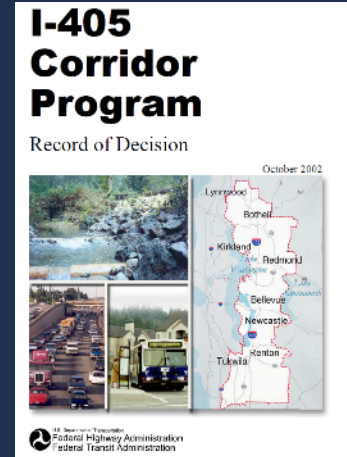
- 10-minute peak and 15-minute off-peak service
- Up to 19 hours of service Monday through Saturday
- Up to 17 hours on Sunday



# I-405 BRT transportation planning

## I-405 BRT builds upon the:

- I-405 Master Plan (2002)
- Sound Transit Long-Range Plan (2014)
- ST3 Plan (2016)





# I-405 Master Plan

## Regional Consensus

- EIS Record of Decision, 2002
- *Multimodal, multiagency plan*

## Roadways

- 2 new lanes in each direction
- Local arterial improvements

## Transit & Transportation Choices

- **Bus Rapid Transit system**
- New transit centers
- 50% transit service increase
- HOV direct access ramps and flyer stops
- **Potential managed lanes system**
- 5000 new Park & Ride spaces
- 1700 new vanpools

## Environmental Enhancements



# I-405 BRT

*37-mile corridor: Lynnwood to Burien*

- 11 BRT stations across 8 cities
- 3 new/expanded parking facilities
- 1 transit center
- Estimated 15,000-18,000 riders daily by 2040



# I-405 BRT travel times

*Projected travel times upon opening with use of managed traffic lanes as compared with ST Express*



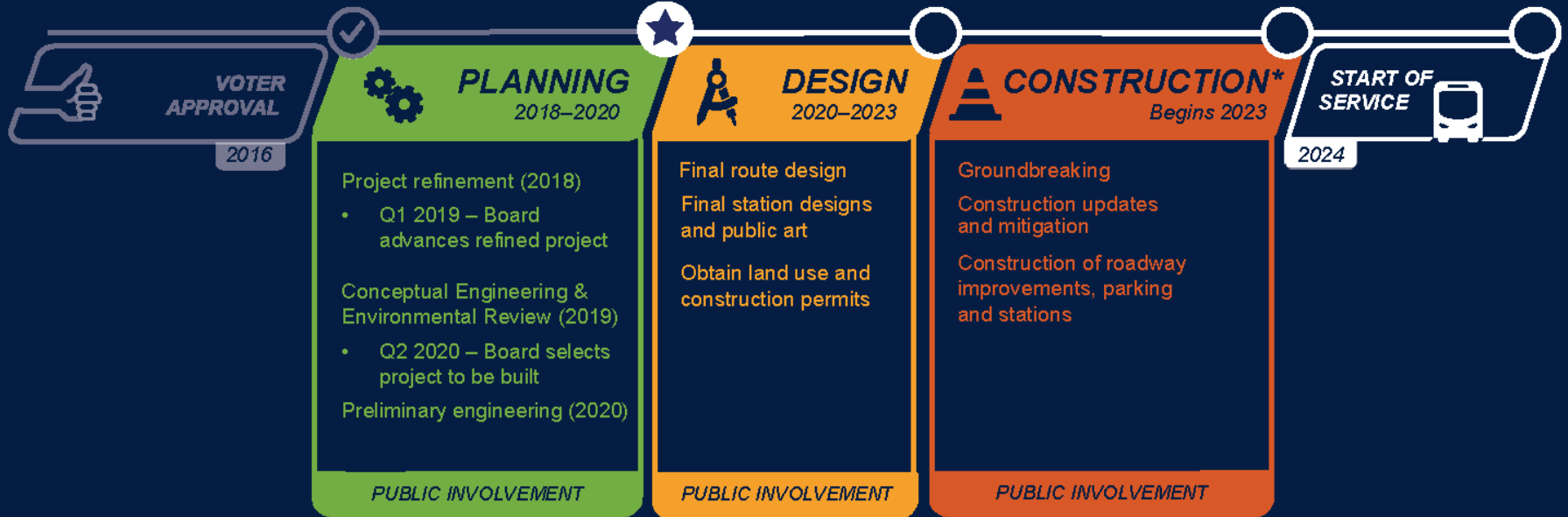
# *Early planning activities*

- The ST3 Plan established the **representative project**: transit mode, corridor, number of stations, station locations
- During 2018, we're developing **refinements** to the representative project
- The ST Board will advance the **refined project** into the conceptual design and environment review phase in 2019



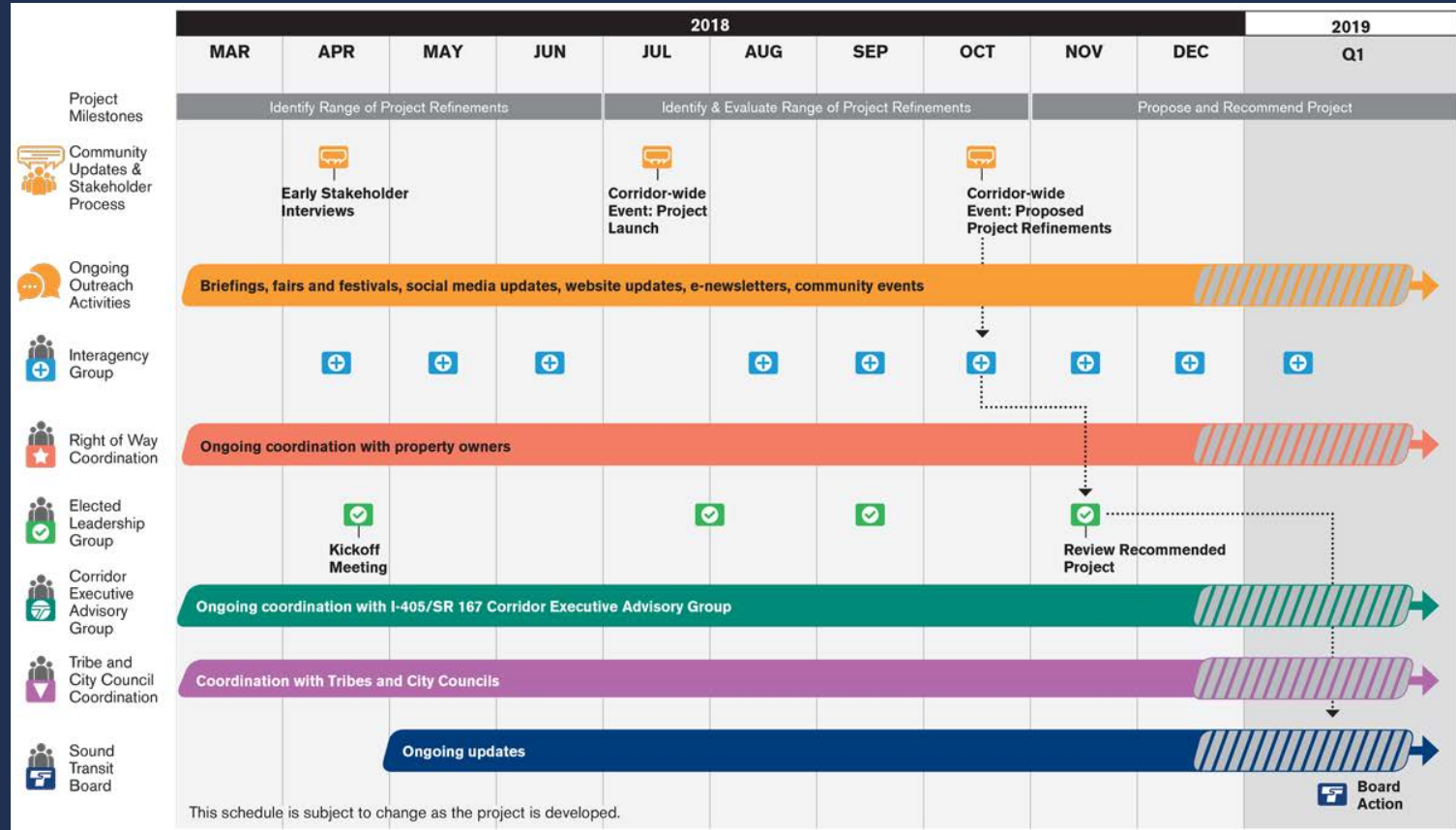


# Project timeline



\*Construction for most of the BRT projects is expected to begin by 2023 and be completed by 2024. Construction of some elements may begin before 2023, and others may occur after service starts in 2024.

# Community engagement process



# *Share your thoughts*

- Unique aspects of your community
- Evaluation criteria you think Sound Transit should consider
- How you plan to access stations
- Any concerns about access
- Location-specific comments
- Ideas about project refinements

## How to comment

Add your thoughts to:

- Maps
- Flipcharts
- Comment forms
- Agree with something someone else wrote?  
Write “+1” next to it to add your voice

# Stay engaged



**In person:** leave your comments today



**Online:** [i405brt.participate.online](https://i405brt.participate.online)



**Email us:** [brt@soundtransit.org](mailto:brt@soundtransit.org)



[soundtransit.org/i405brt](https://www.soundtransit.org/i405brt)





# Stations to visit

1. **Sound Transit:** Learn more about Sound Transit and future System Expansion
2. **Bus Rapid Transit:** Learn more about BRT and the I-405 BRT Project. **Share your thoughts!** Tell us your vision for the future BRT system
3. **Project Elements:** Learn more about the stations and other components of I-405 BRT
4. **Project Refinements:** **Share your thoughts!** What criteria do you think are most important for Sound Transit to consider?
5. **BRT and You:** **Share your thoughts!** Help us make the best BRT possible.
6. **Access:** **Share your thoughts!** Tell us more about accessing stations near you and important community resources.
7. **Engagement:** Learn about next steps and how to stay engaged.