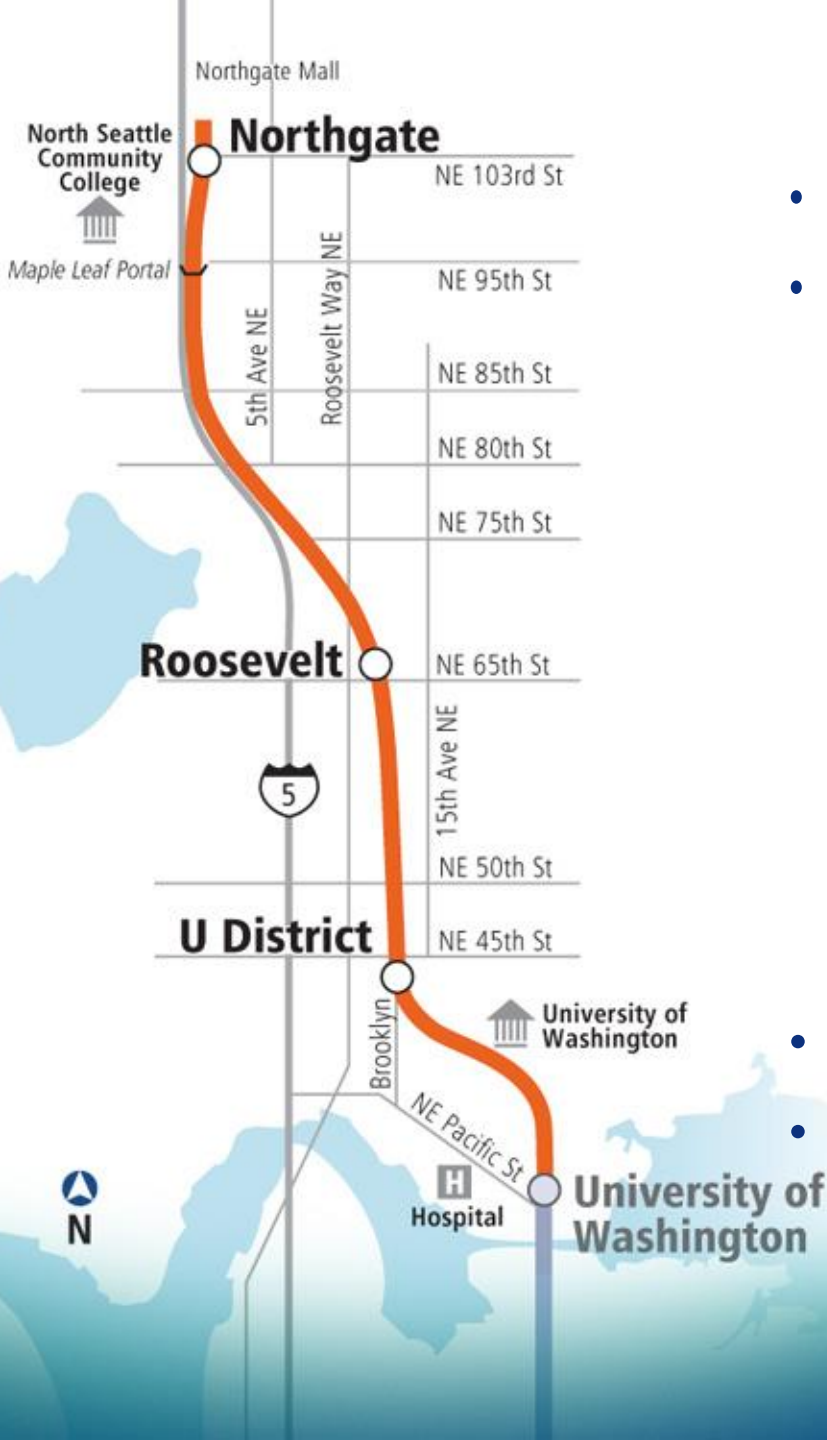


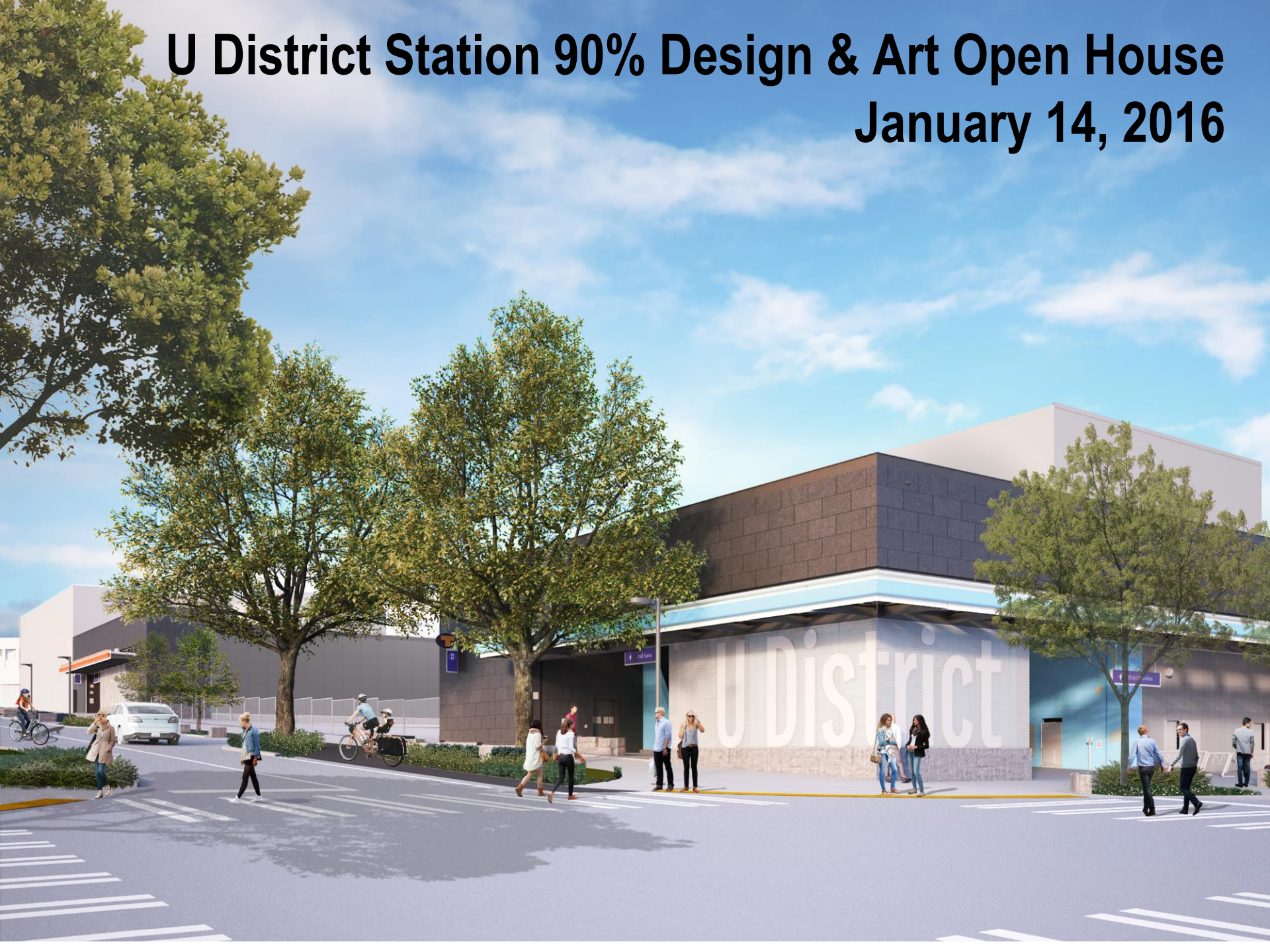
# Tonight's Agenda



- 6:00 pm – Open House
- 6:30 pm – Presentation
  - **Introduction and U District Station Overview**
    - Kate Lichtenstein, Station Project Manager
    - Ryan Bianchi, Community Outreach Specialist
  - **Station and Landscape Design**
    - Howard Fitzpatrick, LMN Architects
    - Barbara Swift, Swift Company
  - **Station Art Concept**
    - Kurt Kiefer, on behalf of Lead Pencil Studio
  - **Questions and Answers**
- 7:00 pm – Return to Open House
- 8:00 pm – Close

# U District Station 90% Design & Art Open House

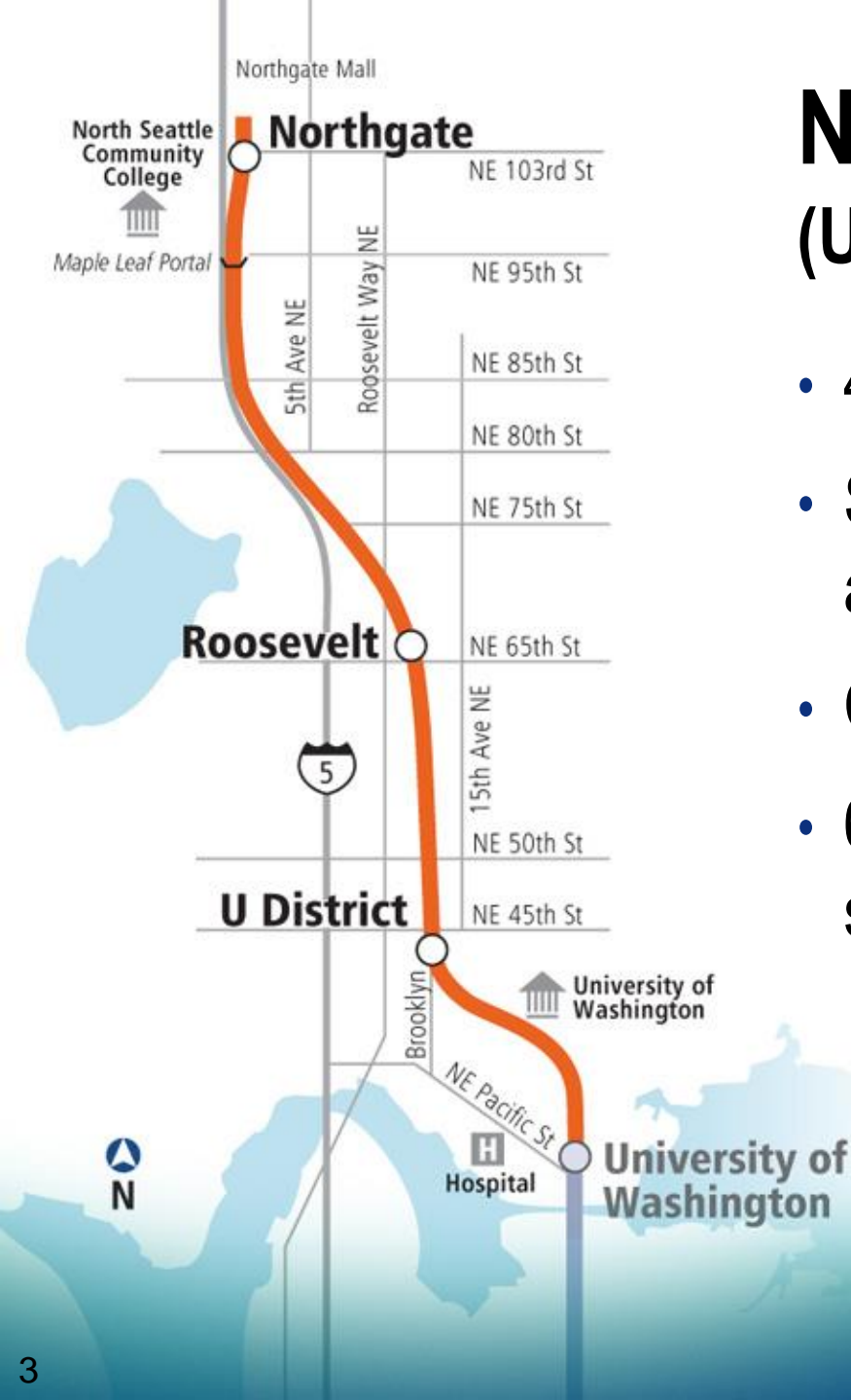
## January 14, 2016

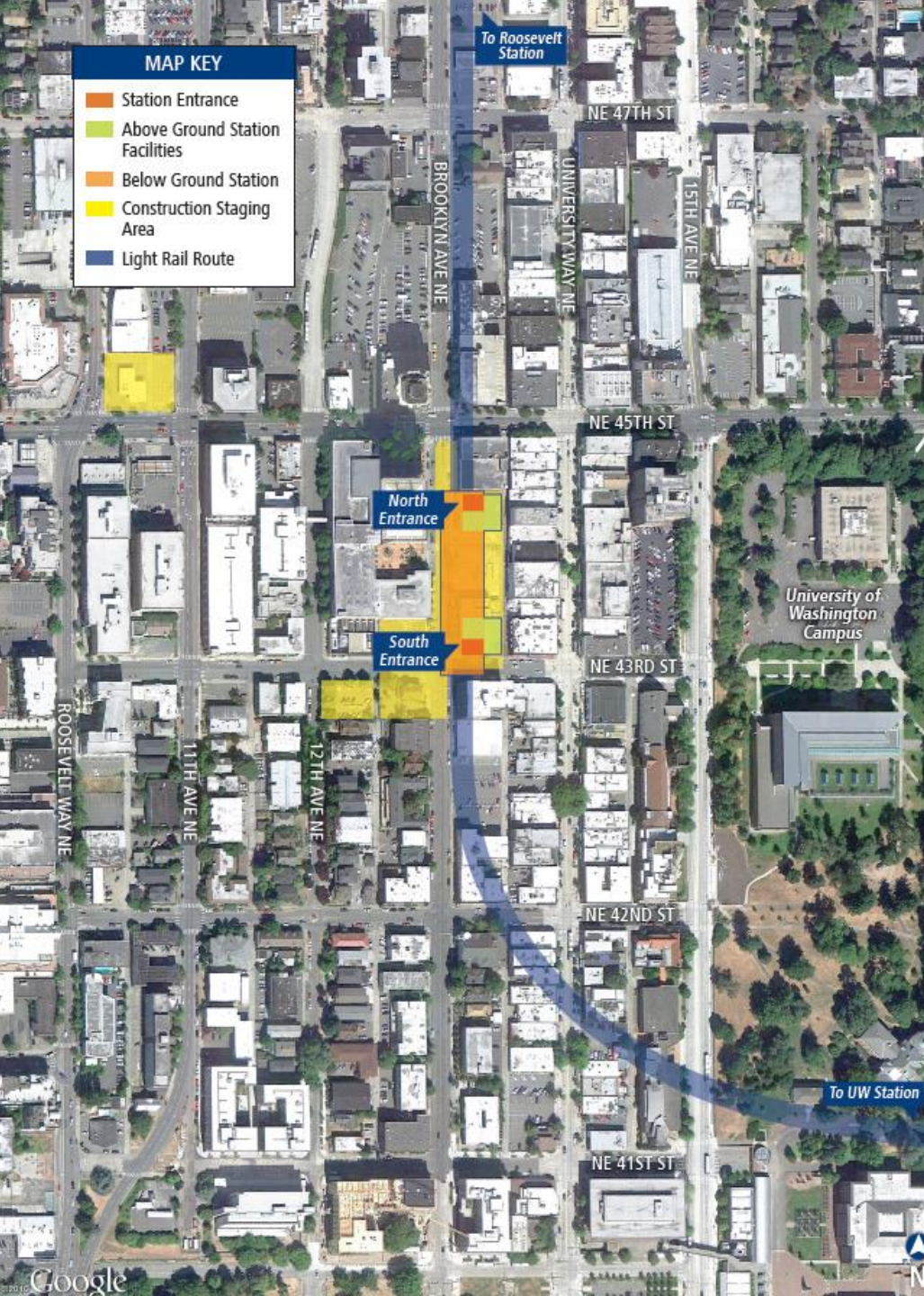




# Northgate Link (University District to Northgate)

- 4.3-mile light rail extension
- Stations at U District, Roosevelt and Northgate
- Completion: 2021
- 62,000 daily boardings added to system by 2030





**MAP KEY**

- Station Entrance
- Above Ground Station Facilities
- Below Ground Station
- Construction Staging Area
- Light Rail Route

# U District Station

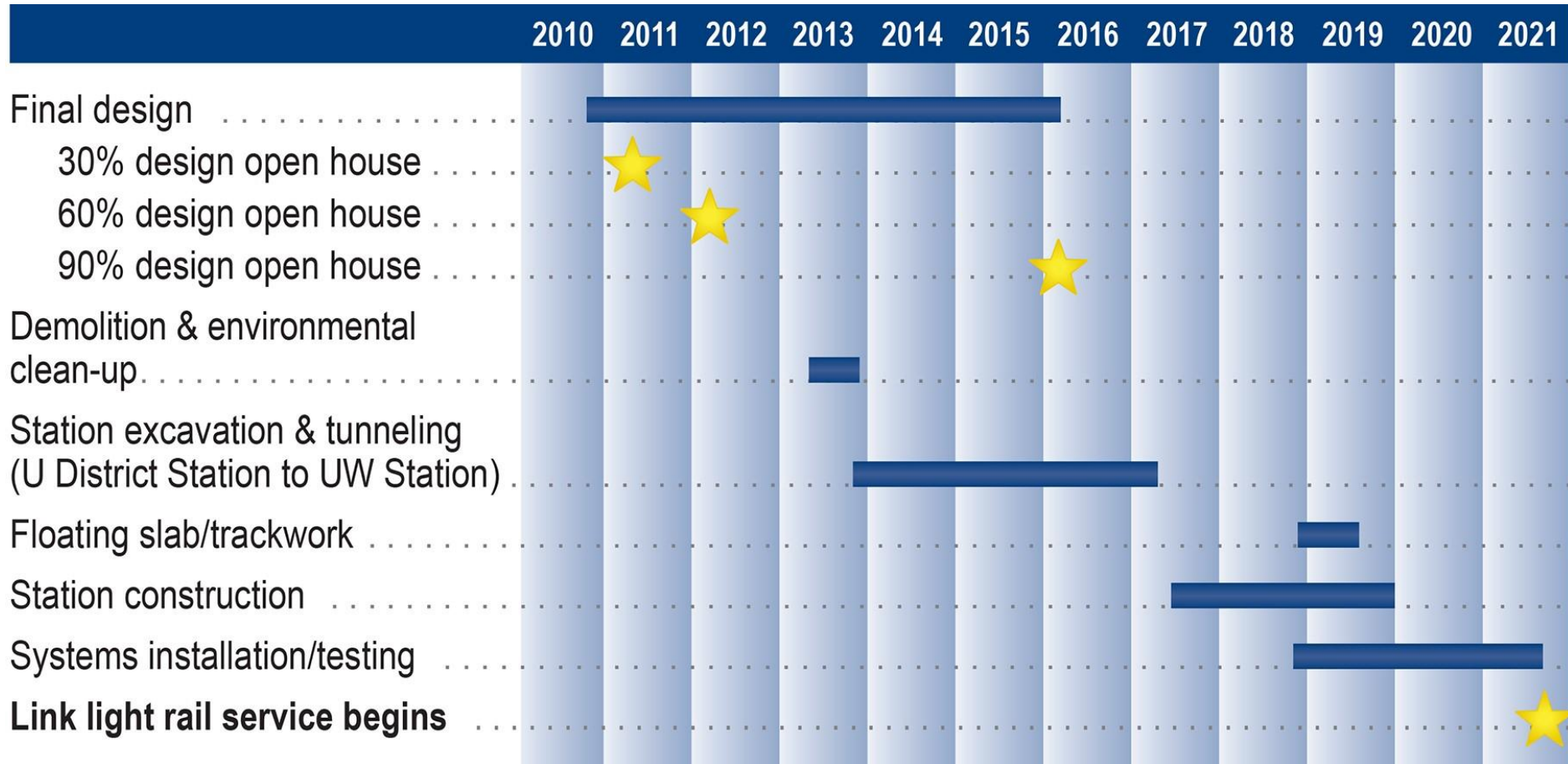
## Key Features:

- Station platform 75-85 ft. underground
  - Two entrances
  - Elevators, escalators and stairs
- Bicycle Parking
- Brooklyn Ave NE and NE 43<sup>rd</sup> St restored as City Green Streets
- Connections to buses on NE 45<sup>th</sup> St, University Way, potential future bus stop at NE 43<sup>rd</sup> St
- Accommodates transit-oriented development above station



# U District Station Schedule

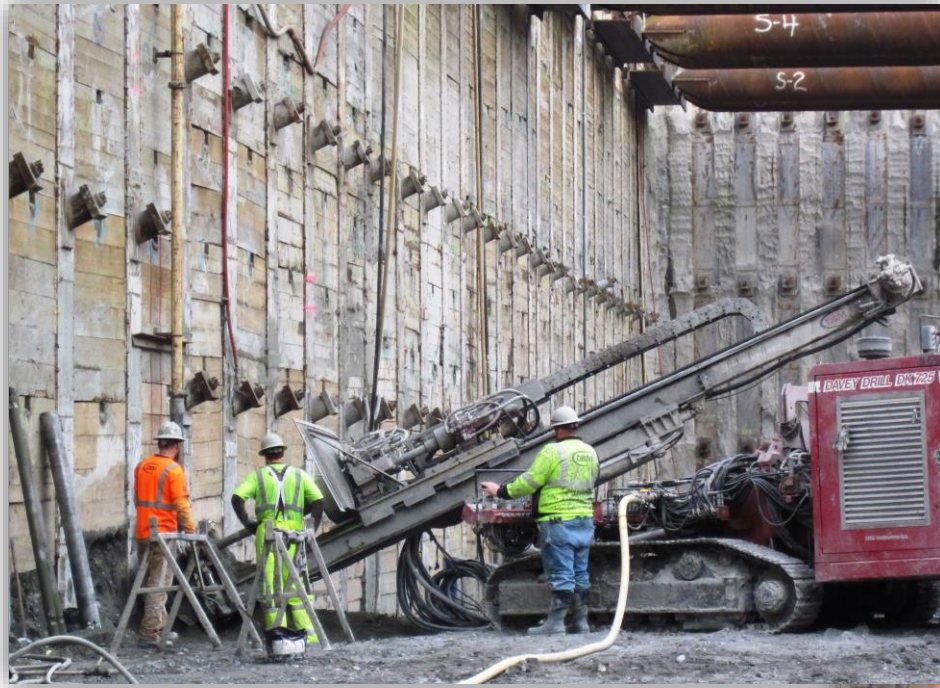
as of 1<sup>st</sup> quarter 2016





**Construction Progress**





# Construction Progress





# Construction Progress



**LEGEND**

- GREEN STREET
- GREENWAY
- POTENTIAL FUTURE GREENWAY
- DEDICATED BICYCLE LANE
- BIKE SHARROWS
- EXISTING BUS STOP
- FUTURE BUS STOP
- UNIVERSITY COMMUNITY GATEWAY
- PROJECT SITE



# Vicinity Map



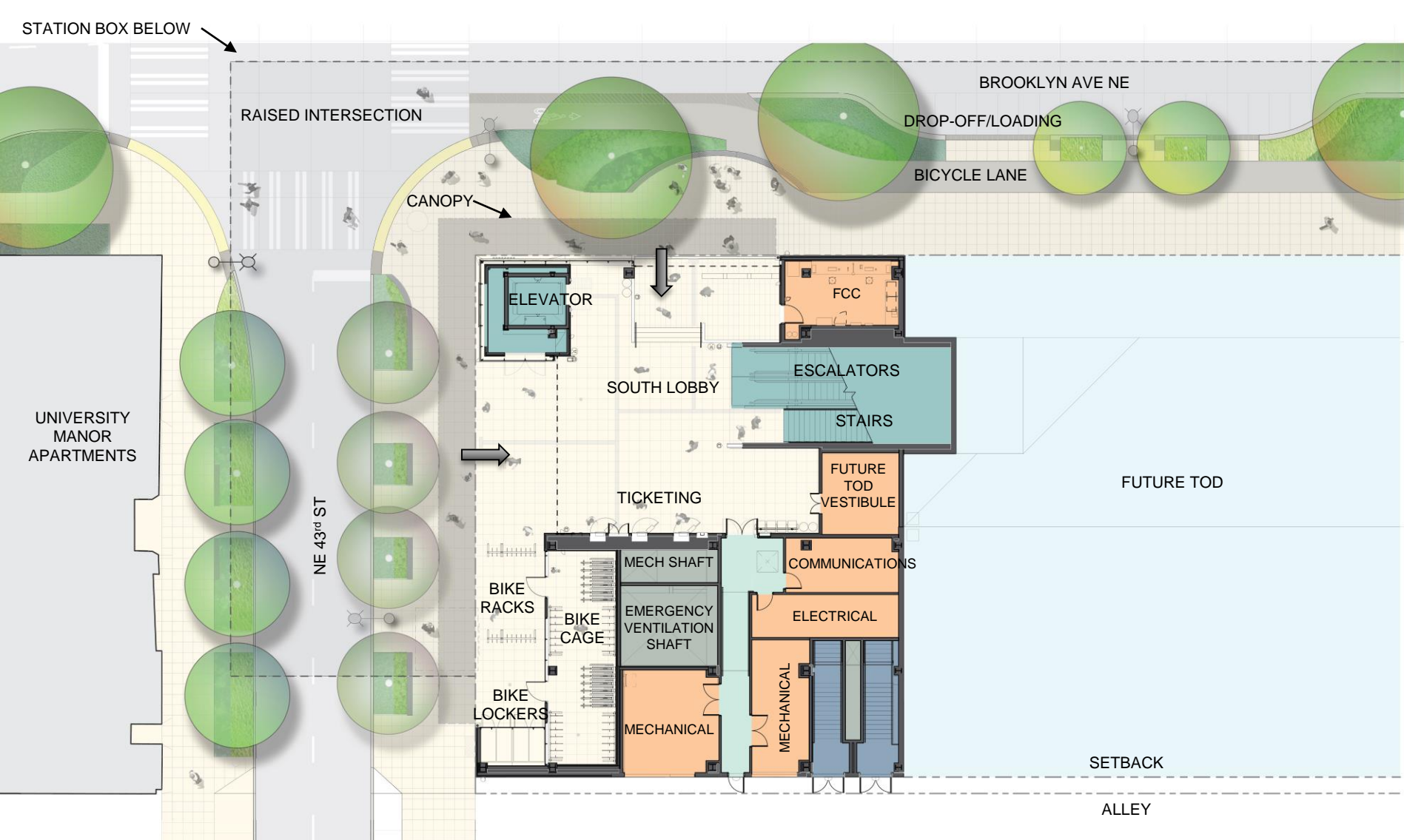


**Perspective Looking Northeast**





# Site Plan



# South Entry





**South Entry**





# South Entry





# North Entry



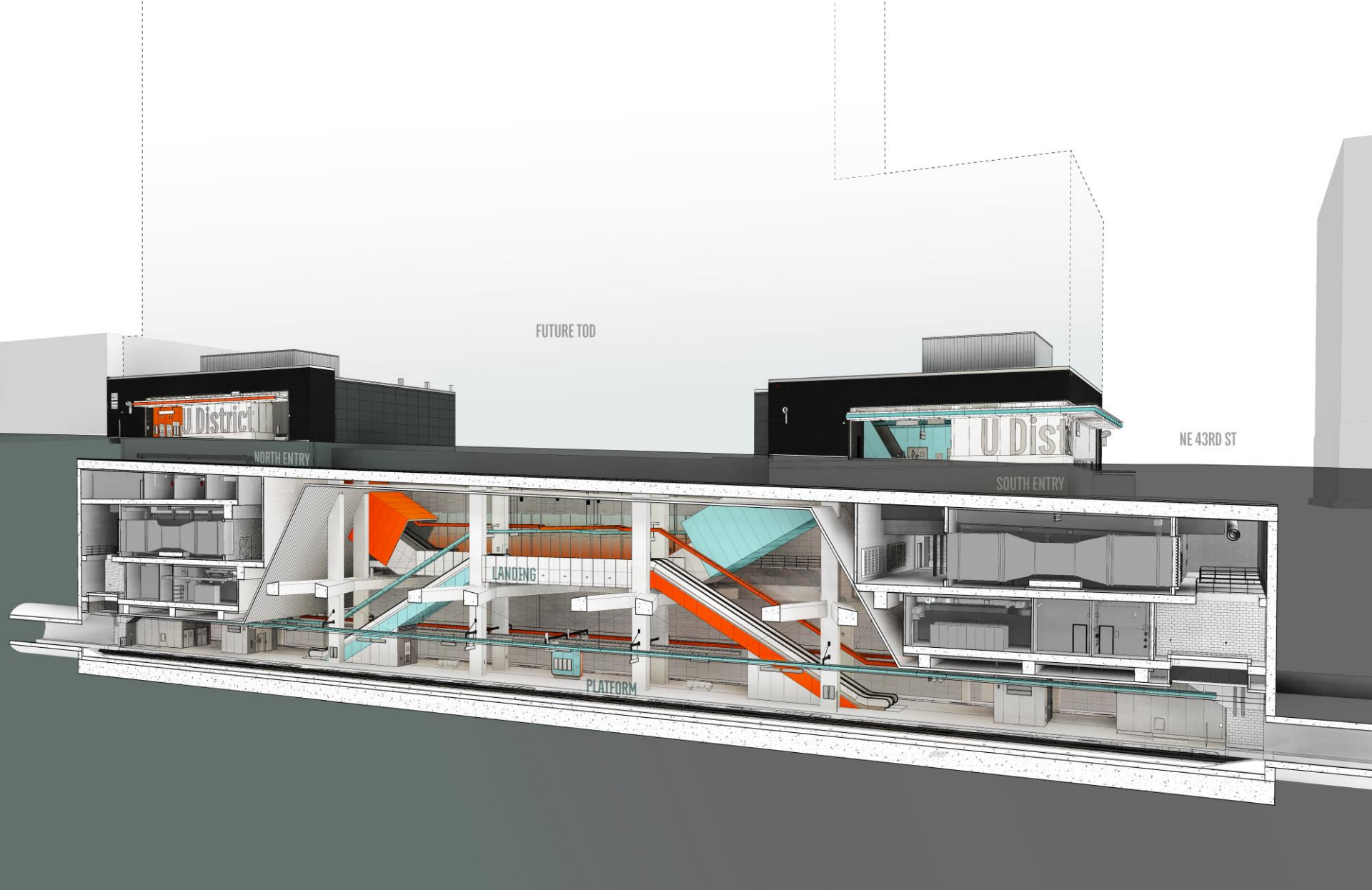


**North Entry**





# North Entry



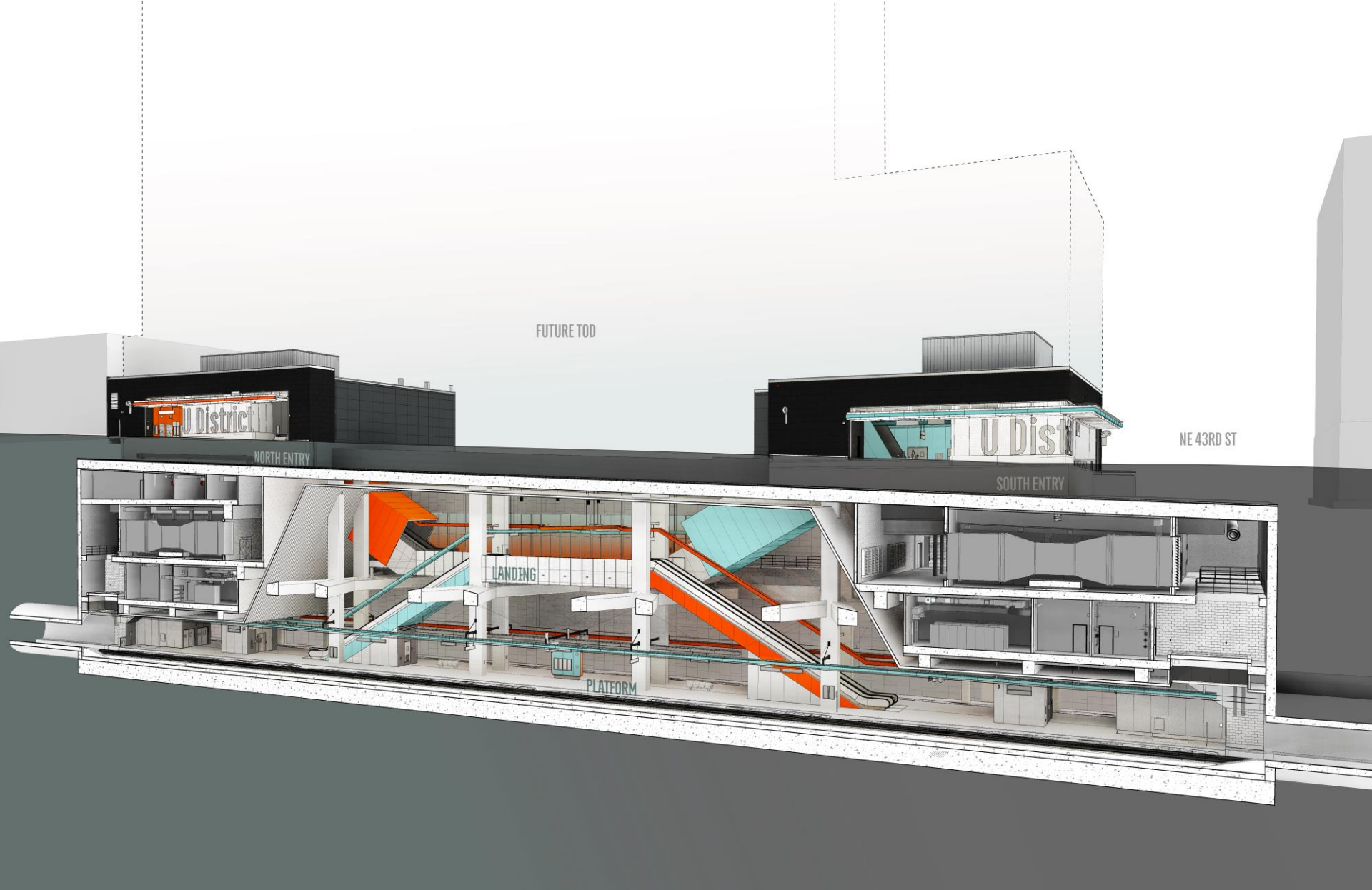
**Section-Perspective**





# Intermediate Landing





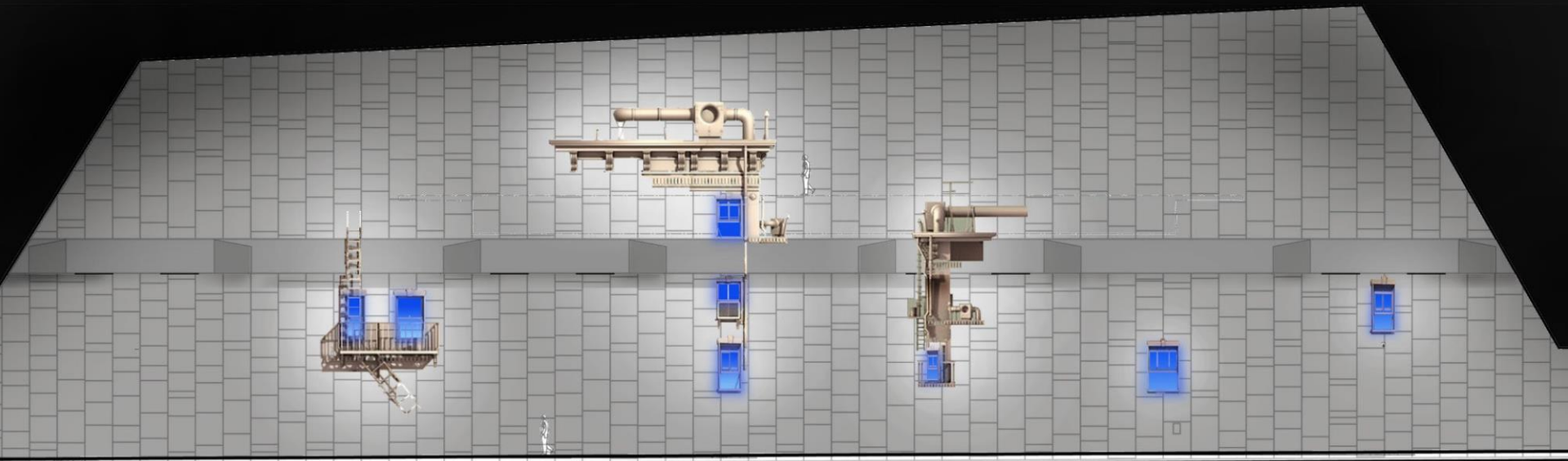
**Section-Perspective**





**Platform**

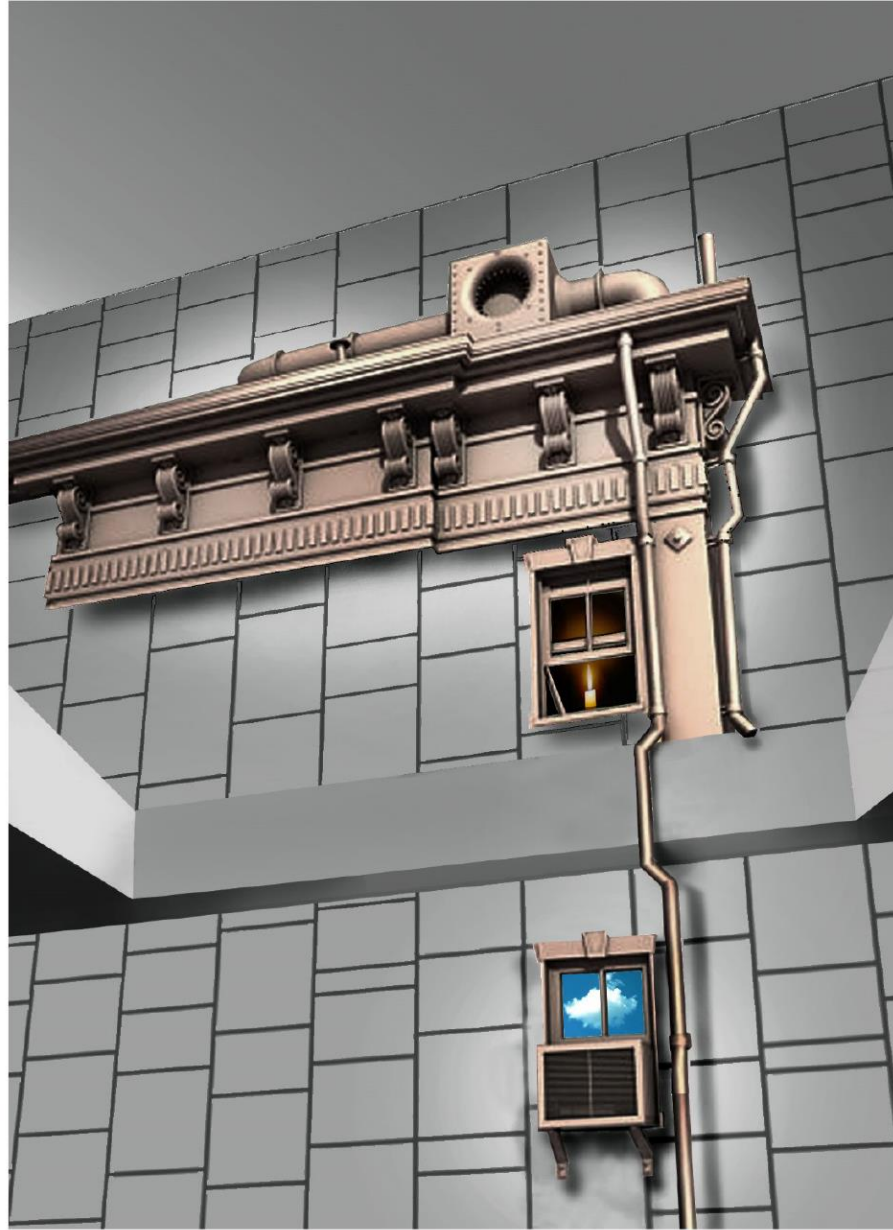




ALUMINUM REPOUSSÉ SCULPTURES IN THE FORM OF ARCHITECTURAL ORNAMENT,  
WINDOWS, FIRE ESCAPES AND ROOFTOP MECHANICAL EQUIPMENT

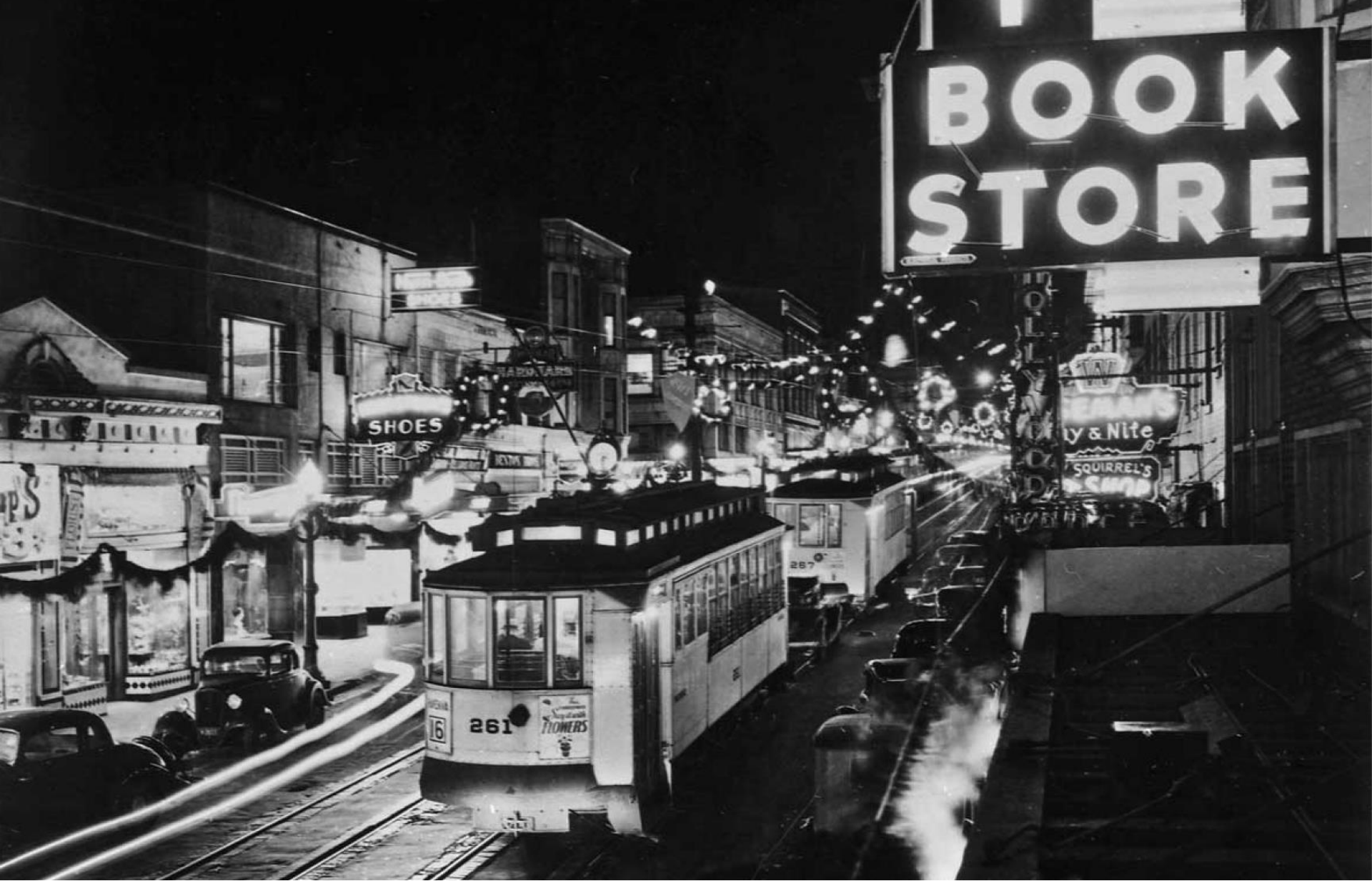
# Artwork Overview





**Artwork Detail**



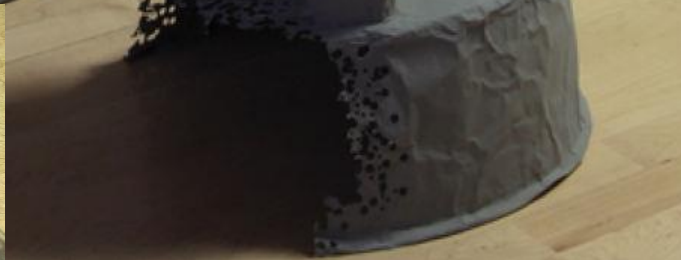


**Artwork Inspiration**

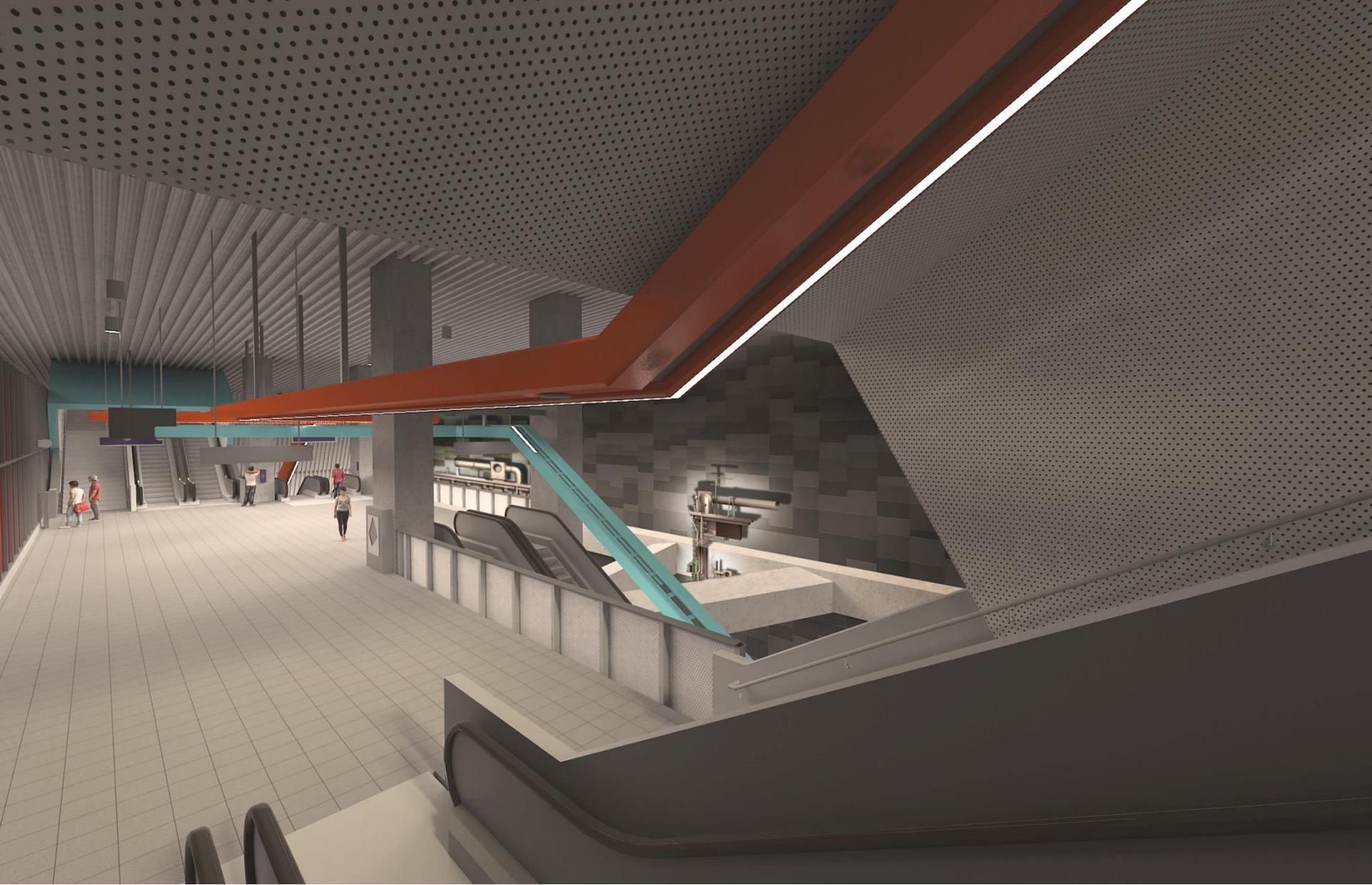


**Sample Video Imagery**





# Sculpture Technique



# Artwork Views





# Artwork Views





# Artwork Views





# Artwork Views





# Artwork Views





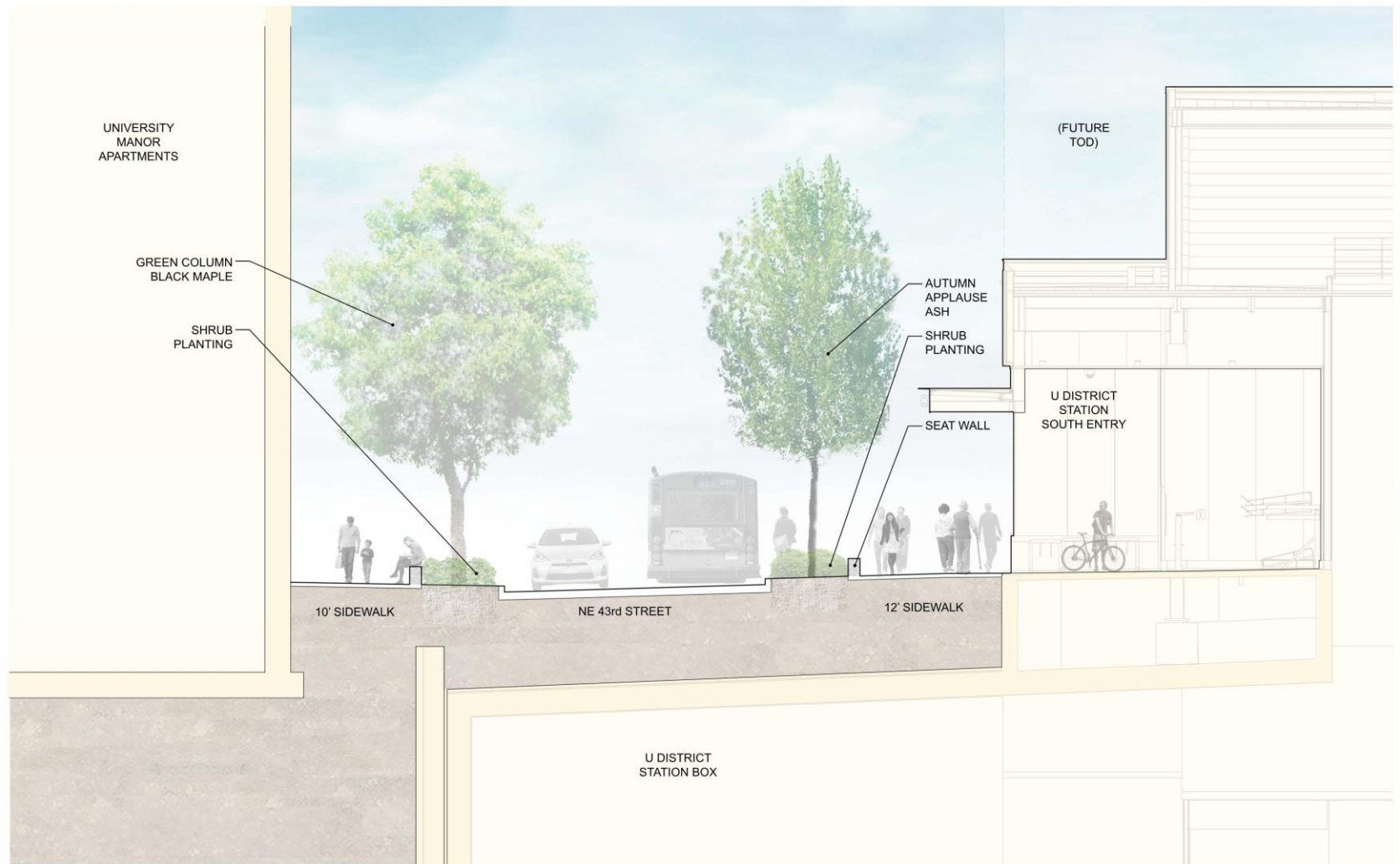
**South Entry – Landscape**



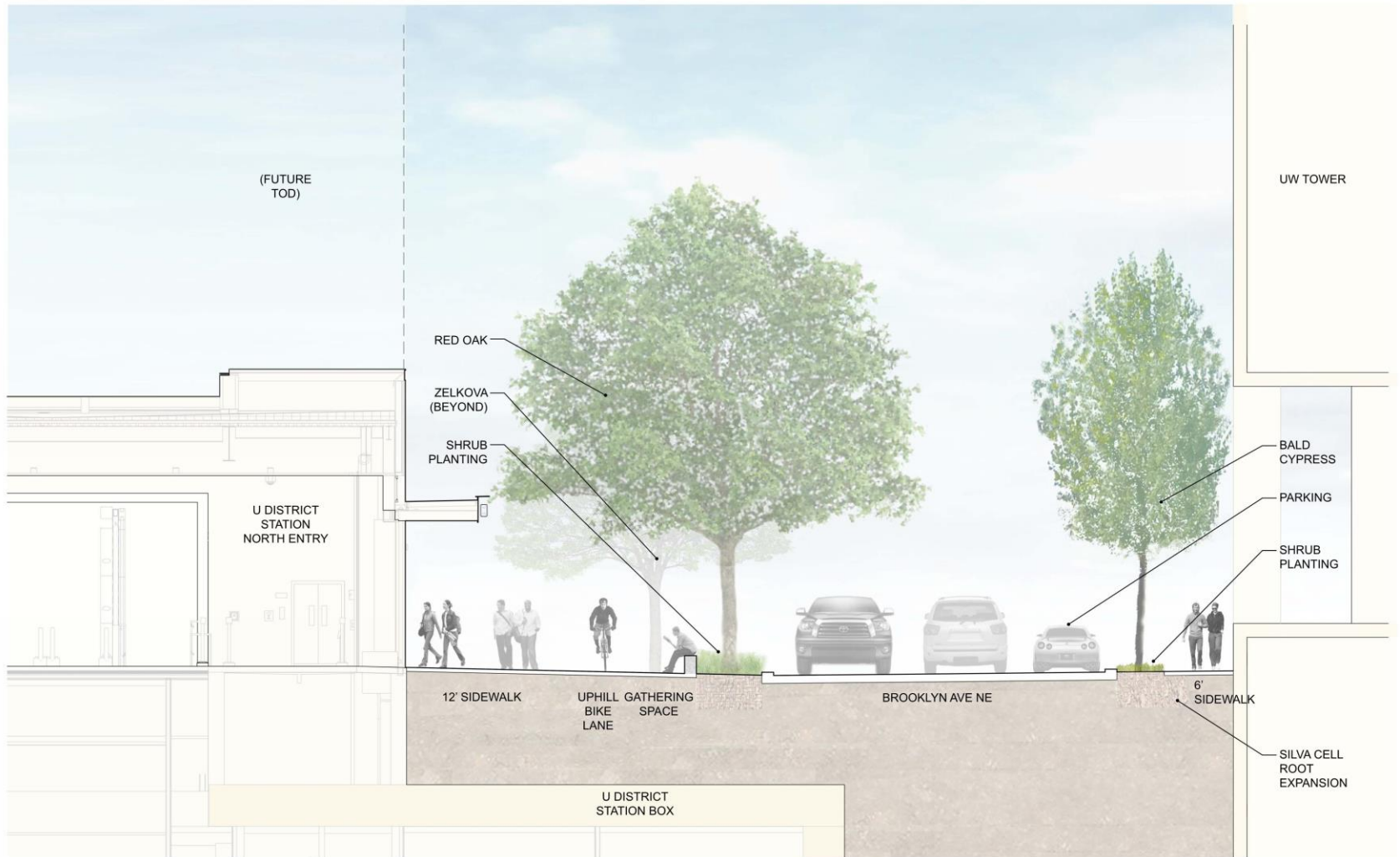


**Site Plan – Landscape**





# Section Through NE 43<sup>rd</sup> St



# Section Through Brooklyn Ave NE





Amur Maackia  
*Maackia amurensis*



Shawnee Brave Bald Cypress  
*Taxodium distichum* 'Mickelson'



Red Oak  
*Quercus rubra*



Green Column Black Maple  
*Acer nigrum* 'Green Column'



Green Vase Zelkova  
*Zelkova serrata* 'Green Vase'



Autumn Applause Ash  
*Fraxinus americana* 'Autumn Applause'

# Tree Species





Dwarf Red Twig Dogwood  
*Cornus sericea* 'Kelseyi'



Everlow Yew  
*Taxus x media* 'Everlow'



Privet Honeysuckle  
*Lonicera pileata*



White Periwinkle  
*Vinca minor* 'Alba'



Fragrant Sumac  
*Rhus aromatica* 'Gro-Low'



Dwarf Burning Bush  
*Euonymus alatus* 'Little Moses'



Beach Strawberry  
*Fragaria chiloensis*



Dwarf Japanese Holly  
*Ilex crenata* 'Helleri'



Mount Vernon Laurel  
*Prunus laurocerasus* 'Mount Vernon'



Sweet Box  
*Sarcococca hookeriana* var. *humilis*

# Shrubs and Groundcovers



PAVEMENT



SEATING



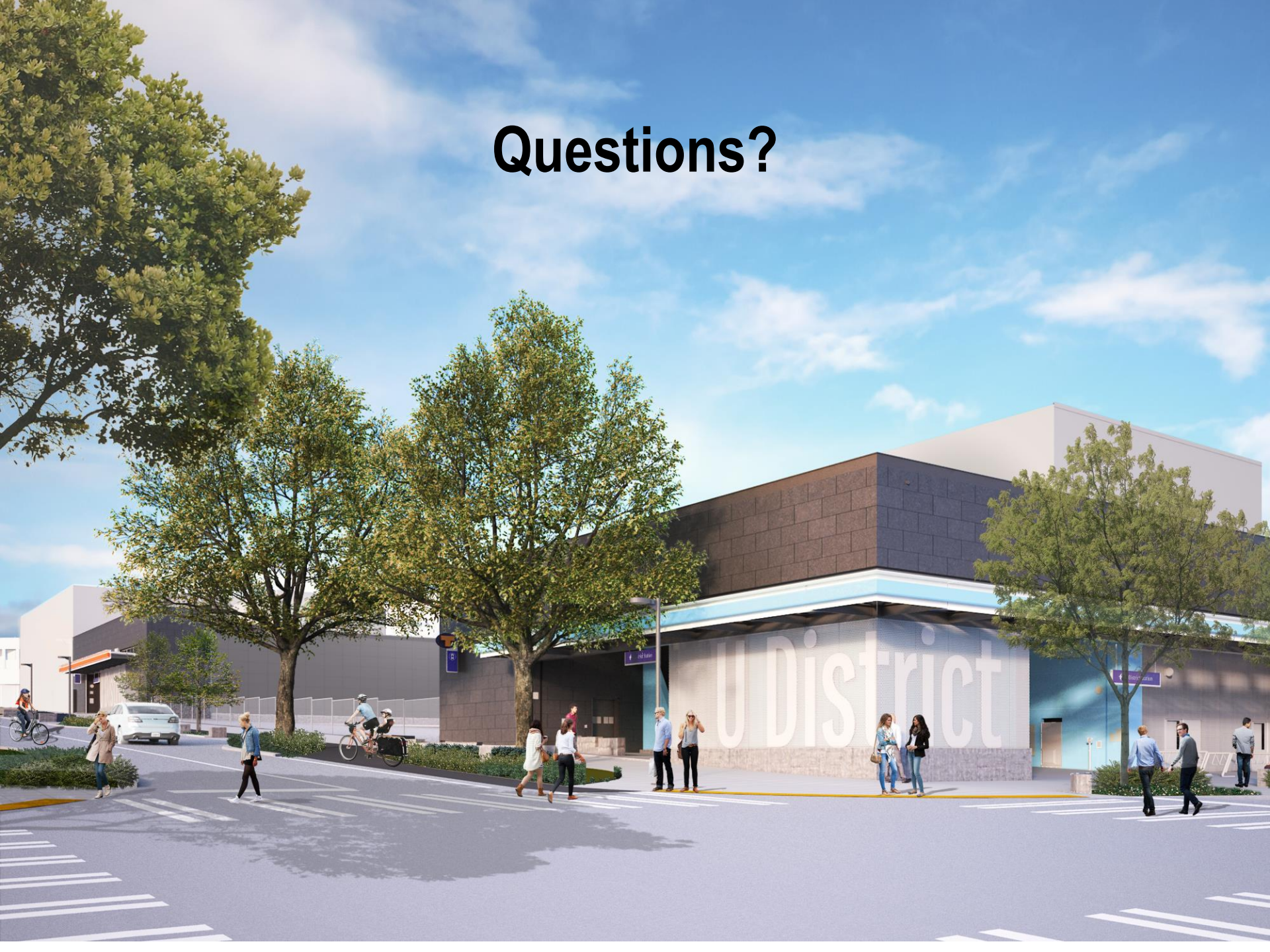
LIGHTING, MARKINGS, & DETAILS



# Urban Elements



# Questions?





# Stay Informed

Sign Up to Receive Email Updates

[www.soundtransit.org/subscribe](http://www.soundtransit.org/subscribe)

Sound Transit Website

[www.soundtransit.org/northlink](http://www.soundtransit.org/northlink)

Contact Ryan Bianchi:

206.398.5070

[northlink@soundtransit.org](mailto:northlink@soundtransit.org)

