



DESIGN AND CONSTRUCTION OPEN HOUSE

OPERATIONS AND MAINTENANCE FACILITY: EAST

The purpose of tonight's meeting is to provide:

- Design progress of the new Operations and Maintenance Facility in Bellevue.
- Approved transit oriented development plan.
- Project schedule and what to expect during construction.
- How to stay informed and involved.
- East Link construction updates.



Agenda

6:00 p.m. Open House

Meet with project staff and view displays boards and graphics featuring information about design progress and construction.

6:30 p.m. Presentation

8:00 p.m. Open House adjourns

Other information:

- Eastside Rail Corridor Trail
- City of Bellevue Bel-Red Plan
- Construction schedule and what to expect
- Light rail vehicle fleet expansion



PROJECT MAP

OPERATIONS AND MAINTENANCE FACILITY: EAST

Operations & Maintenance Facility: East

Project Snapshot

- Baselined: July 2016
- Budget: \$449.2 million (YOE)
- Schedule: Construction complete Dec. 2020

Map Key

- Station
- Ⓟ Park & Ride
- East Link Alignment

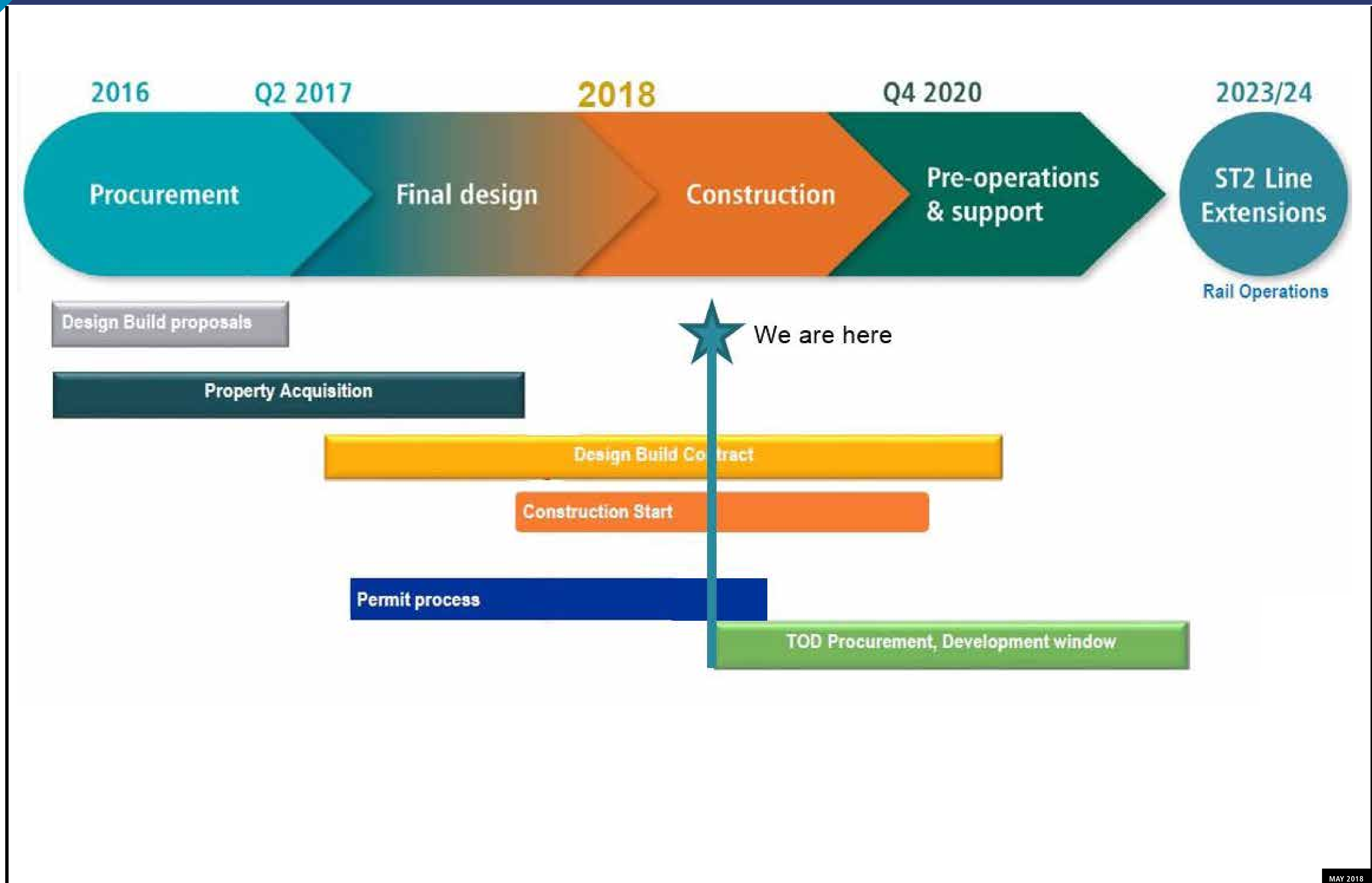


MAY 2018



OVERALL SCHEDULE SUMMARY

OPERATIONS AND MAINTENANCE FACILITY: EAST



MAY 2018



EXTENDING THE SPRING DISTRICT VISION

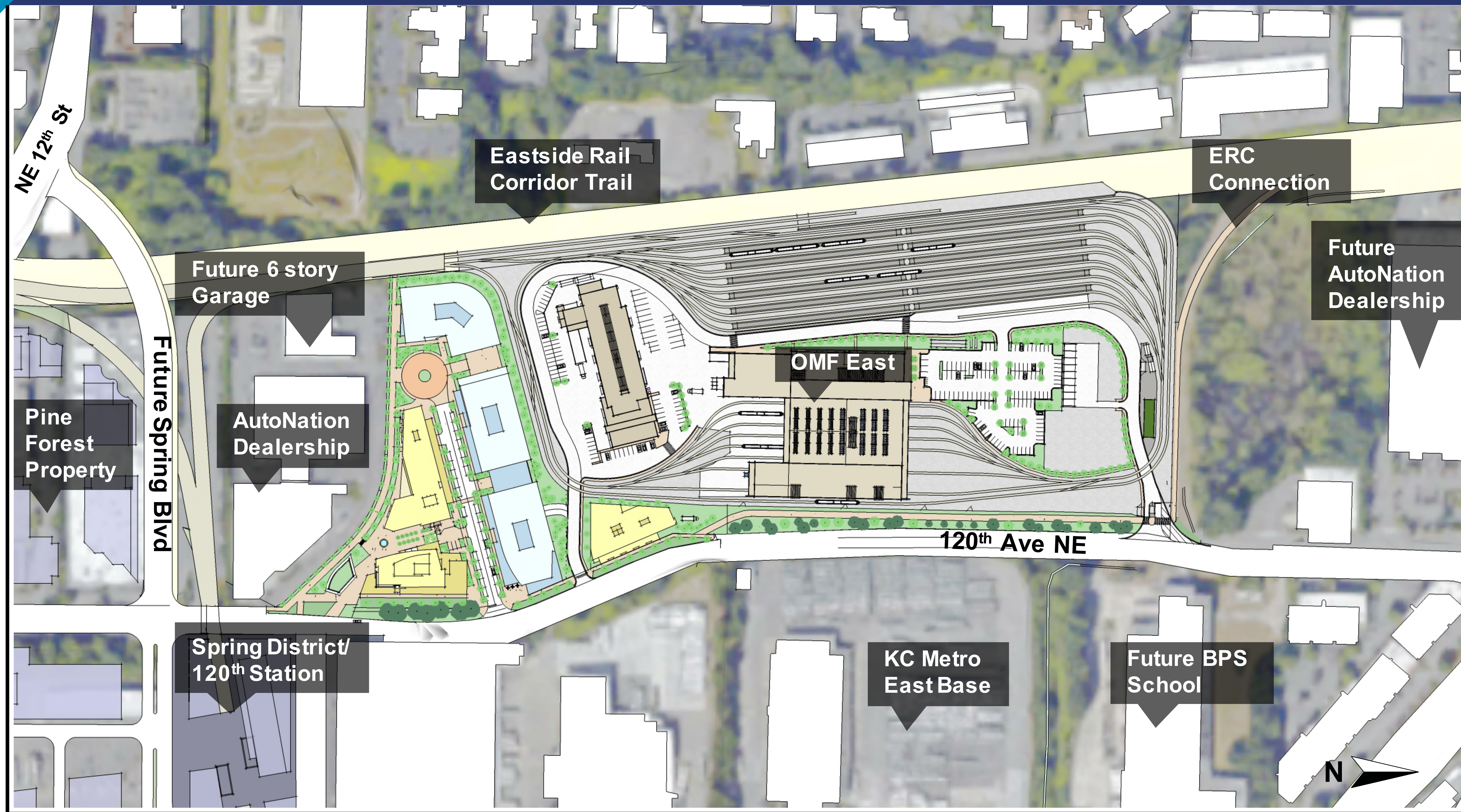
OPERATIONS AND MAINTENANCE FACILITY: EAST





PROJECT CONTEXT & SITE PLAN

OPERATIONS AND MAINTENANCE FACILITY: EAST



JUNE 2017



PROGRAM HIGHLIGHTS

OPERATIONS AND MAINTENANCE FACILITY: EAST



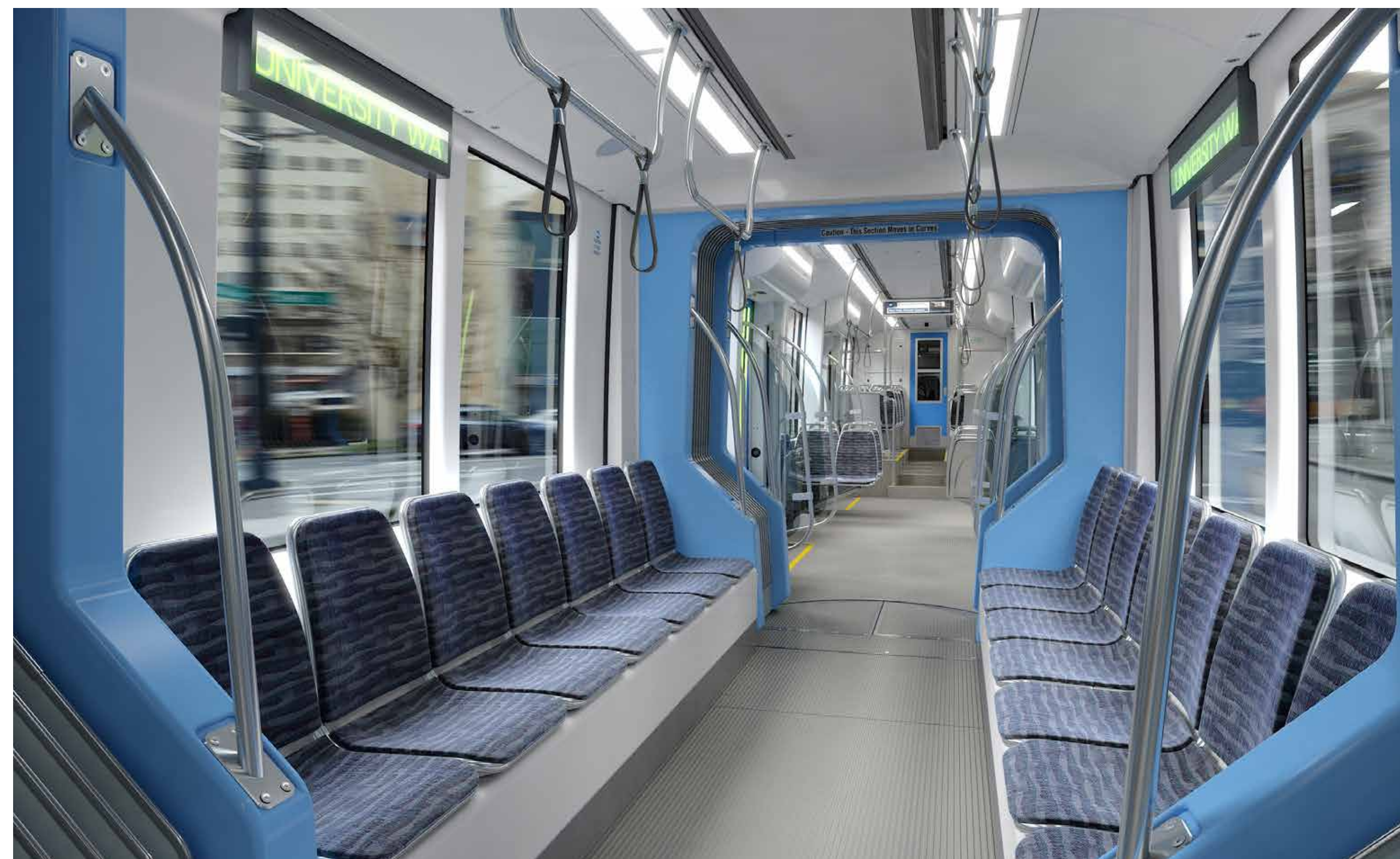
- Facility to service, deploy and store 96 LRVs.
- Vehicle maintenance shop with 14 service bays.
- Mainline track, systems & station maintenance functions (Maintenance of Way).
- LRV parts storage and car wash.
- Administrative and locker room facilities to support ~250 full-time employees.
- Equipment and furnishings.
- A LEED Silver minimum certification.
- 24/7, 365 day operations.
- New vehicles begin arriving to the OMF in Seattle in 2019.
- The existing OMF reaches capacity during 2020.
- Bike trail connections along the Eastside Rail Corridor to Wilburton Station and along 120th Ave NE.

MAY 2018



152 NEW VEHICLES

LIGHT RAIL VEHICLE FLEET EXPANSION



MAY 2018



FINAL DESIGN

OPERATIONS AND MAINTENANCE FACILITY: EAST



Operations and Maintenance Facility: East, looking south



View of OMFE looking north, or from the 7-8th floor of TOD build-out

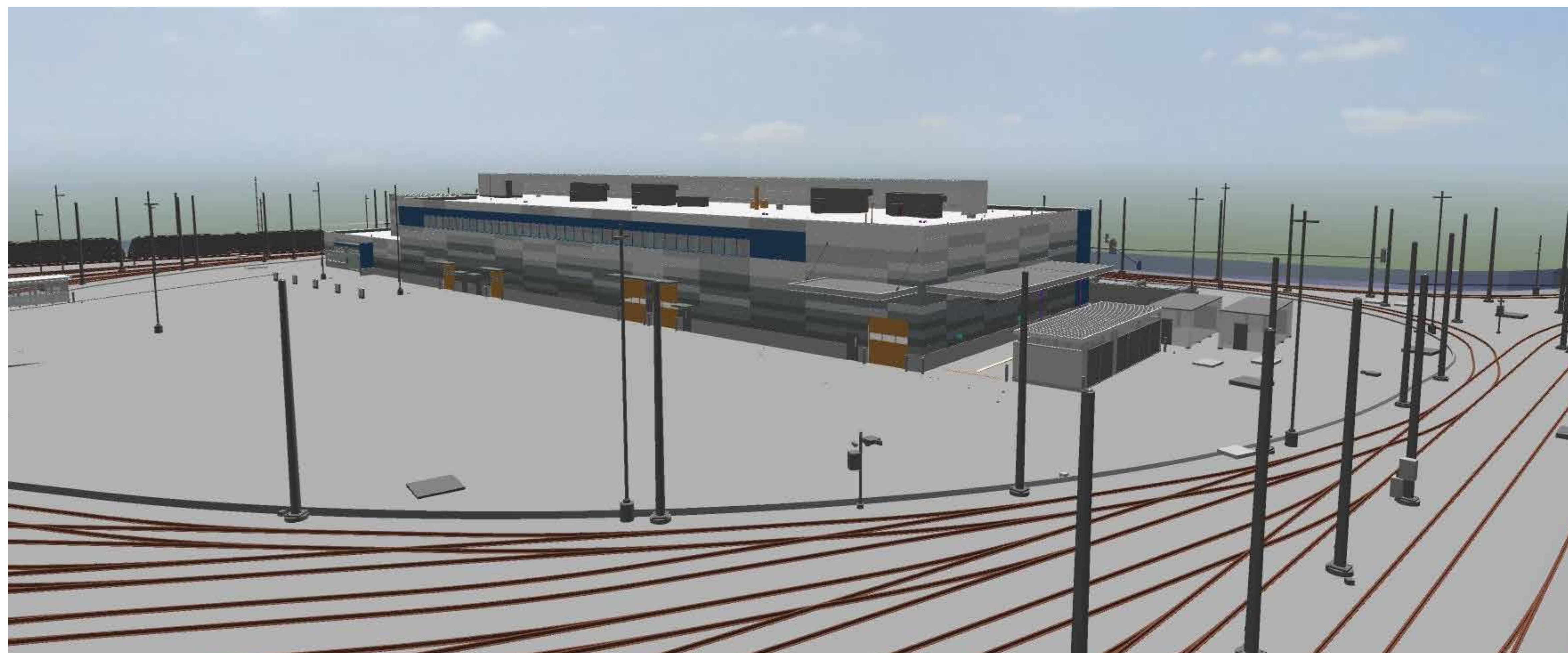


FINAL DESIGN

OPERATIONS AND MAINTENANCE FACILITY: EAST



Maintenance of Way building looking south



Maintenance of Way building, looking south from Eastside Rail Corridor

MAY 2018



FINAL DESIGN

OPERATIONS AND MAINTENANCE FACILITY: EAST



OMFE Building, looking south from 120th Ave NE



OMFE Building, looking south from 120th Ave NE

MAY 2018



OPERATIONS AND MAINTENANCE BUILDING

OPERATIONS AND MAINTENANCE FACILITY: EAST





OPERATIONS AND MAINTENANCE BUILDING

OPERATIONS AND MAINTENANCE FACILITY: EAST



Operations and Maintenance Building

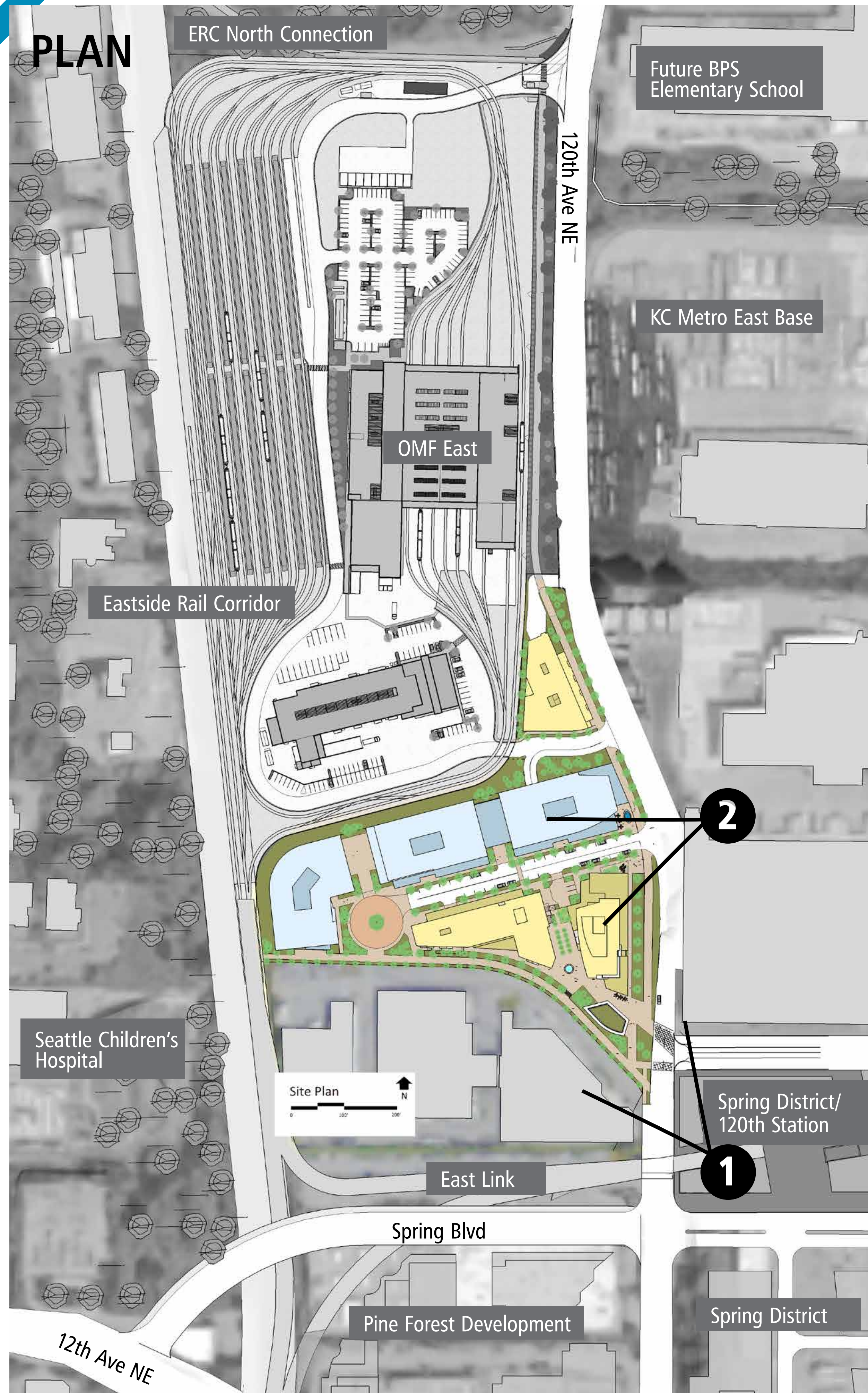


Main Entry – Operations and Maintenance Building



TOD MASTER DEVELOPMENT PLAN

OPERATIONS AND MAINTENANCE FACILITY: EAST



Zoning:

BR-OR-2, mixed-use

Size: (anticipated)

282,715 SF (6.5 acres)

Development capacity:

1.0 – 1.2 million GSF

Development Parameters from Implementation Agreement:

Min 20% Residential

Min 50,000 SF

Project milestones:

2018: MDP approved by City of Bellevue

2018-2019: RFP for TOD developer

2021-2023: Potential construction



WEST PERIMETER SCREENING ARTWORK

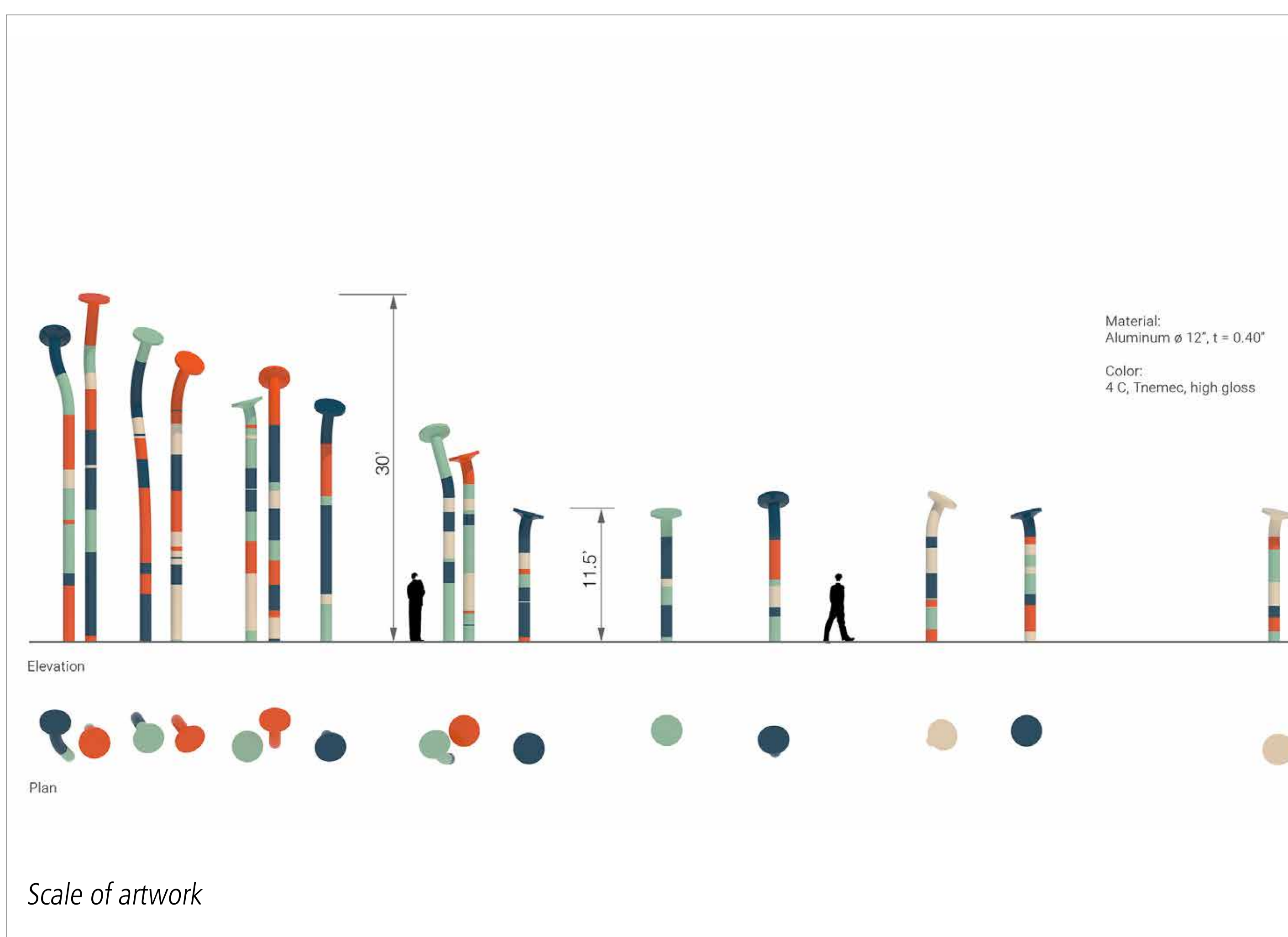
"NAILS" BY ARTIST CHRISTIAN MOELLER

ABOUT THE ARTIST

Artist Christian Moeller has designed a monumentally-scaled linear artwork which will run along the east side of the Eastside Rail Corridor between the trail and the Operations and Maintenance Facility's (OMFE) security fence. Moeller's artwork will be an irregular palisade running approximately 450 ft from the mid-point of the OMFE to its northeastern corner. The individual sculptures forming that palisade will be painted metal poles with bent tops terminating in flanged caps, roughly 12 inches in diameter and ranging in height from 9 to 28 feet in height. Each sculpture will be painted with a unique striped pattern selected from a palette of 3-4 colors, with the precise colors to be determined in the coming months. From a distance, the forms will suggest bent nails or mushroom-like forms. Trail users will see them at an acute angle from which they will appear as energetic, fanciful objects animating the trail edge and partially screening the OMFE.



Rendering of artwork



Artwork looking north from the Eastside Rail Corridor trail

MAY 2018