

CENTRAL BELLEVUE CONSTRUCTION OPEN HOUSE

EAST LINK EXTENSION

The purpose of tonight's meeting is to provide:

- An overview of the construction schedule, sequence and phasing of work on the portion of East Link comprised of the East Main, Bellevue Downtown, Wilburton and Spring District/120th Stations.
- A chance to talk with the central Bellevue project team and meet the Contractor that will build the central Bellevue portion of the East Link project.



Agenda

5-7 p.m. Open House

Meet with project staff and review information about the construction schedule, sequence and phasing.

5:30 p.m. Presentation

7 p.m. Meeting adjourns

LIGHT RAIL ALIGNMENT

EAST LINK EXTENSION



Length: 14 miles

Ride times:

- Mercer Island to University of Washington: 20 minutes
- East Main to Westlake: 21 minutes
- Redmond Technology Center to Bellevue Downtown: 10 minutes

Rider projection: About 50,000 riders will use East Link every day by 2030

Budget: \$2.8 billion (2010 \$)

Start of service: Targeted 2023

2006-2011

Planning and environmental review

2011-2015

Final design

2015

Start of advanced utility relocation

2016-2022

Heavy civil construction

Targeted 2022

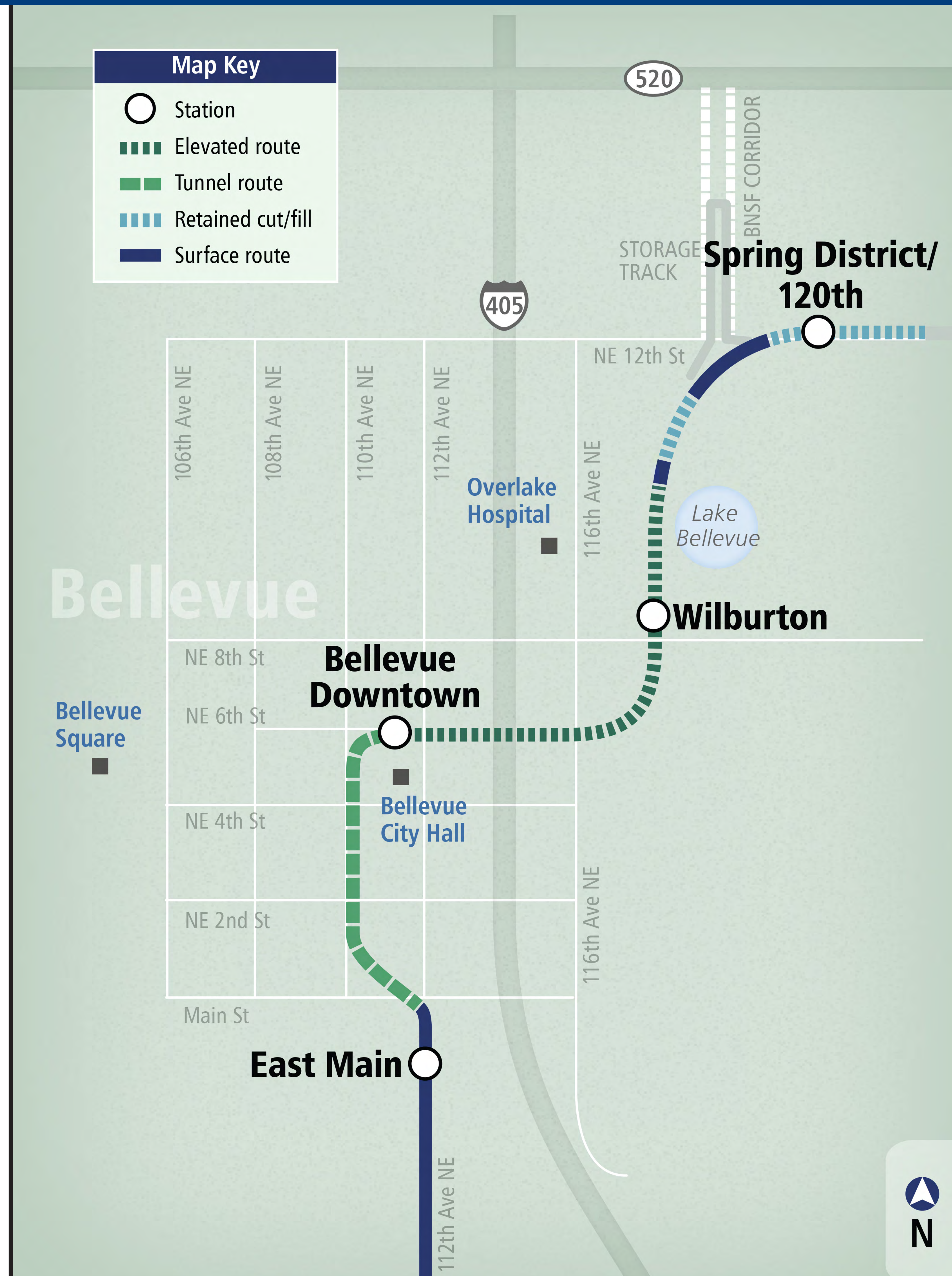
Testing and pre-operations

Targeted 2023

East Link in service

CENTRAL BELLEVUE OVERVIEW

EAST LINK EXTENSION



Highlights:

- Four stations including the East Main, Bellevue Downtown, Wilburton and Spring District/120th stations.
- Nearly two miles of new light rail including at-grade track, track within a tunnel and track on an elevated structure, which includes the segment that will allow light rail to cross over I-405.

Travel times

- East Main to University of Washington Station: 28 minutes
- Bellevue Downtown to Westlake Station: 24 minutes
- Wilburton to Redmond Technology Center Station: 9 minutes
- Spring District/120th to Stadium Station: 30 minutes

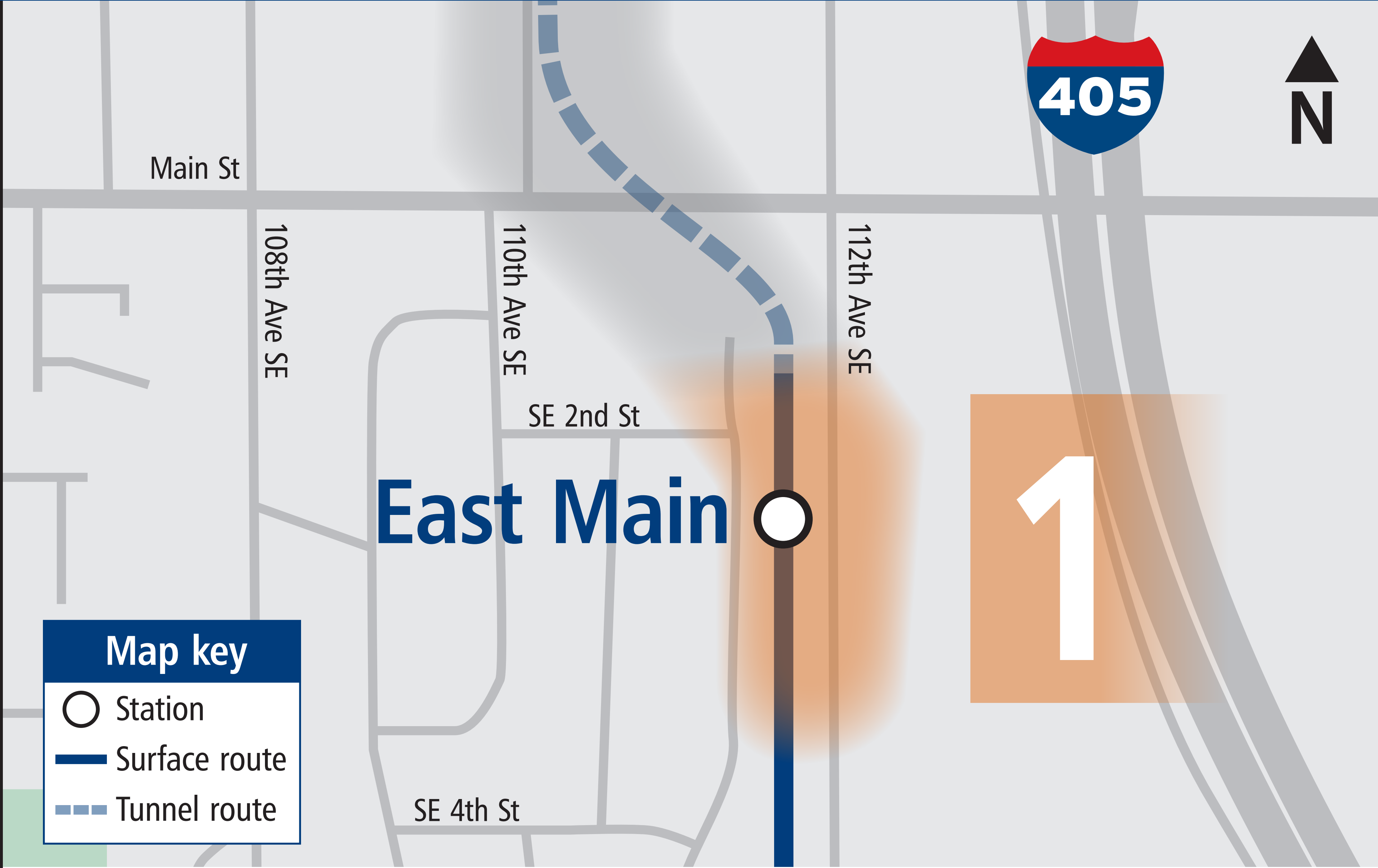
LIGHT RAIL CONSTRUCTION IN CENTRAL BELLEVUE

EAST LINK EXTENSION



AREA 1: EAST MAIN STATION

EAST LINK EXTENSION



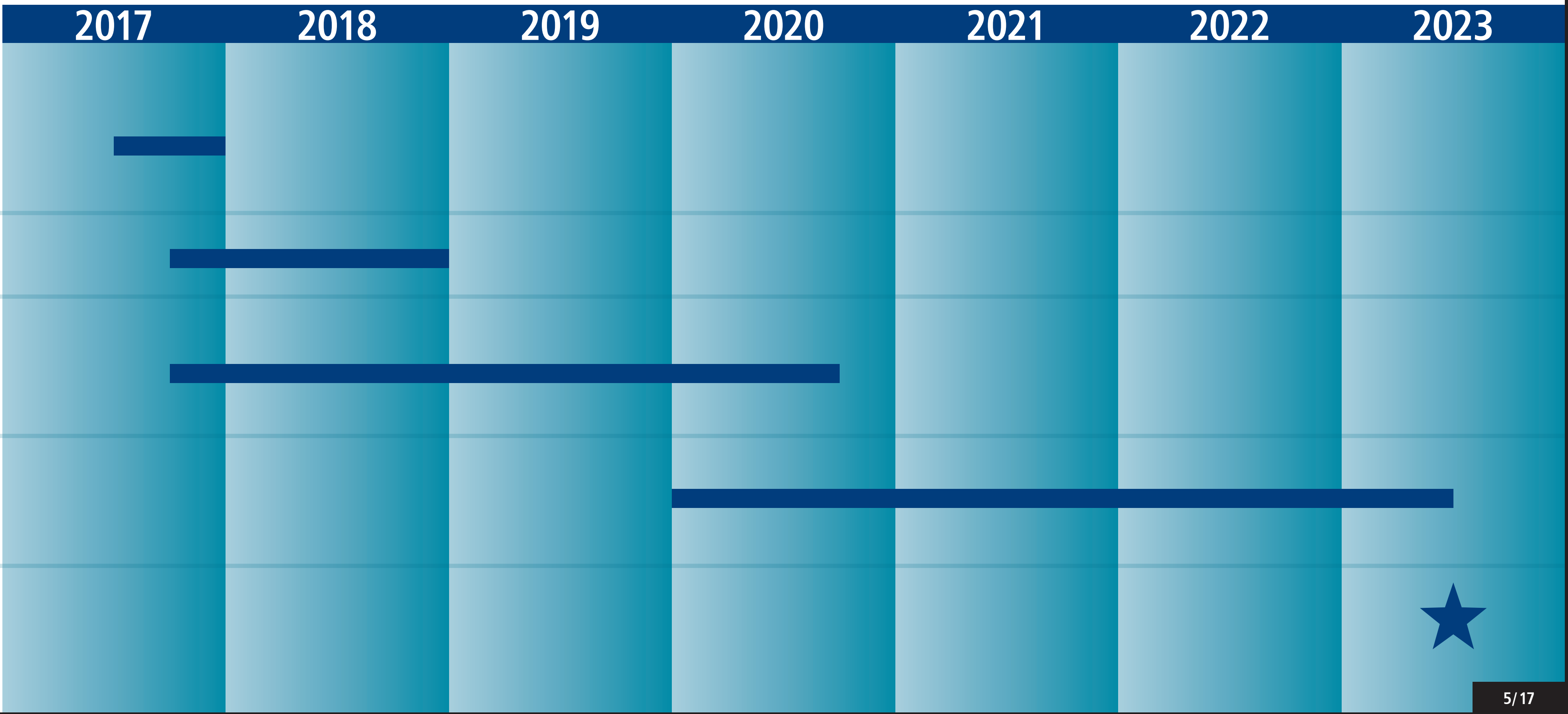
Key construction elements

- Structure demolition
- East Main Station
- New crosswalk on 112th Avenue SE

Typical work hours:
Monday-Friday, 7 am-6 pm

Approximate construction schedule

- Site preparation, clearing and demolition of structures
- Utility work
- Construction of infrastructure, East Main Station, track and amenities
- Light rail systems installation, testing and certifications
- Light rail stations open and service begins



AREA 2: SOUTH TUNNEL PORTAL AND DOWNTOWN BELLEVUE TUNNEL

EAST LINK EXTENSION



Key construction elements

- Tunnel finishes
- Traction power substation
- New, two-acre Main Street Park at the south tunnel portal

Typical work hours:
Monday-Friday, 7 am-6 pm

Approximate construction schedule

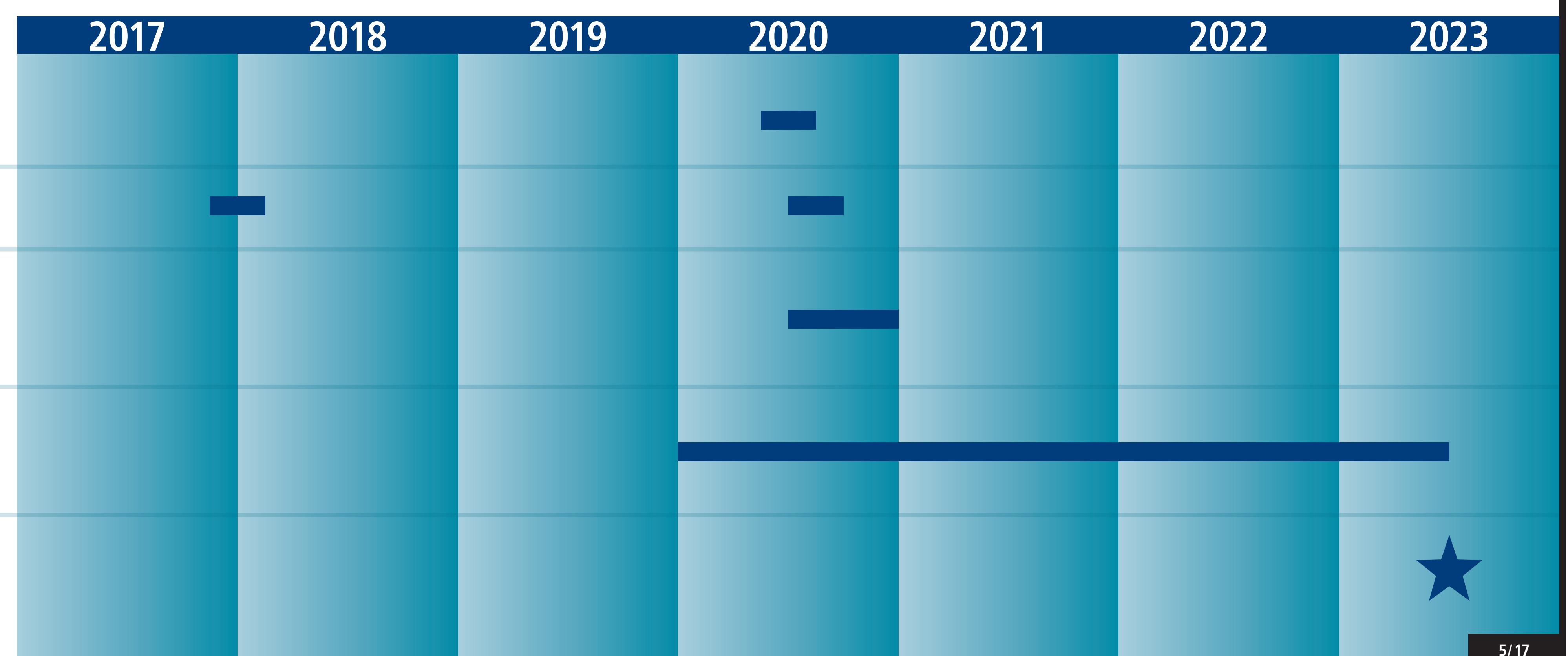
Demolition of temporary sound wall

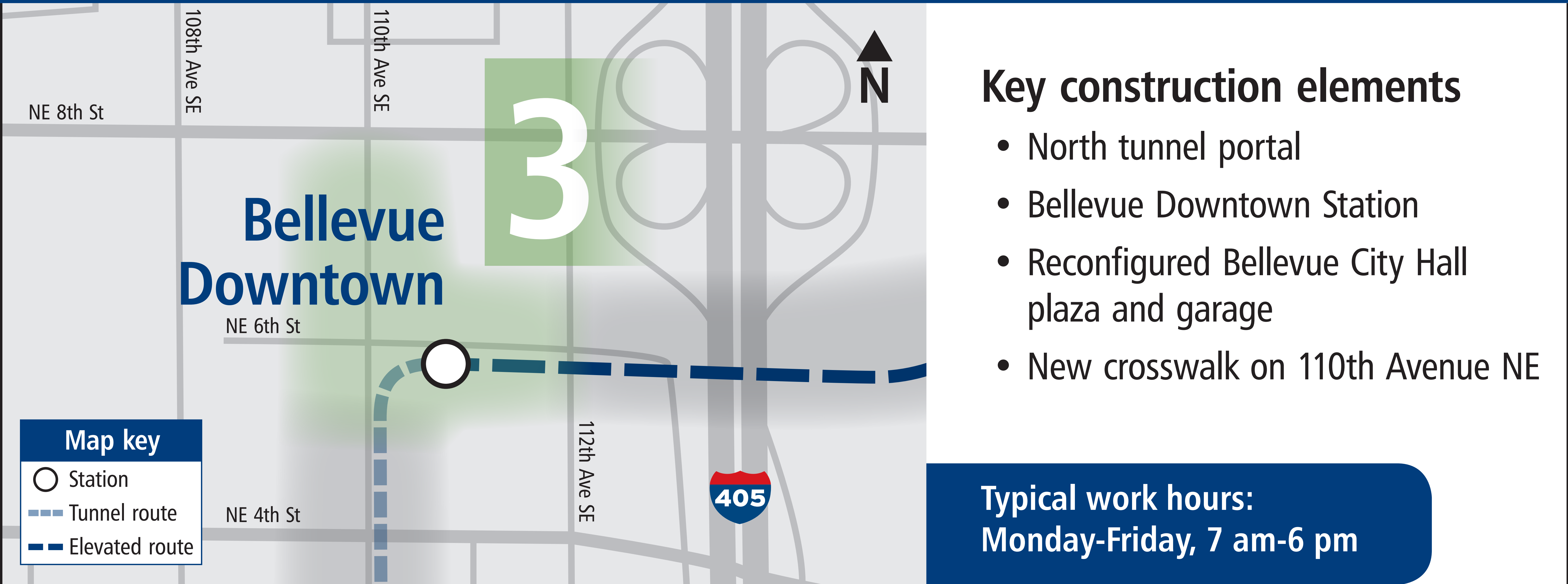
Utility work

Construction of infrastructure and amenities

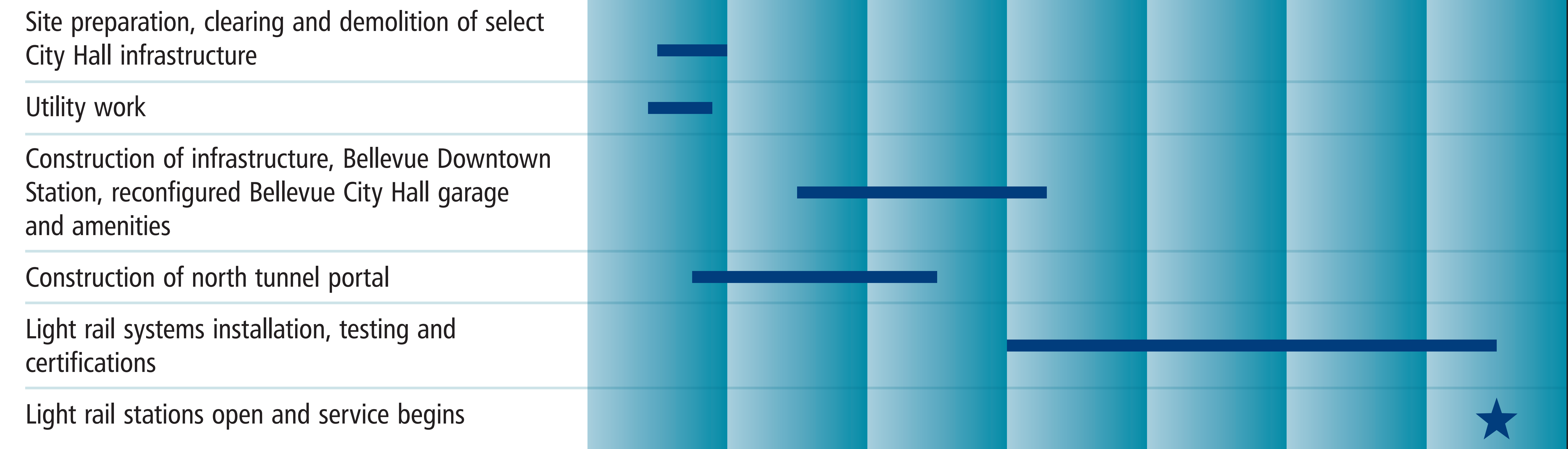
Light rail systems installation, testing and certifications

Light rail stations open and service begins





Approximate construction schedule

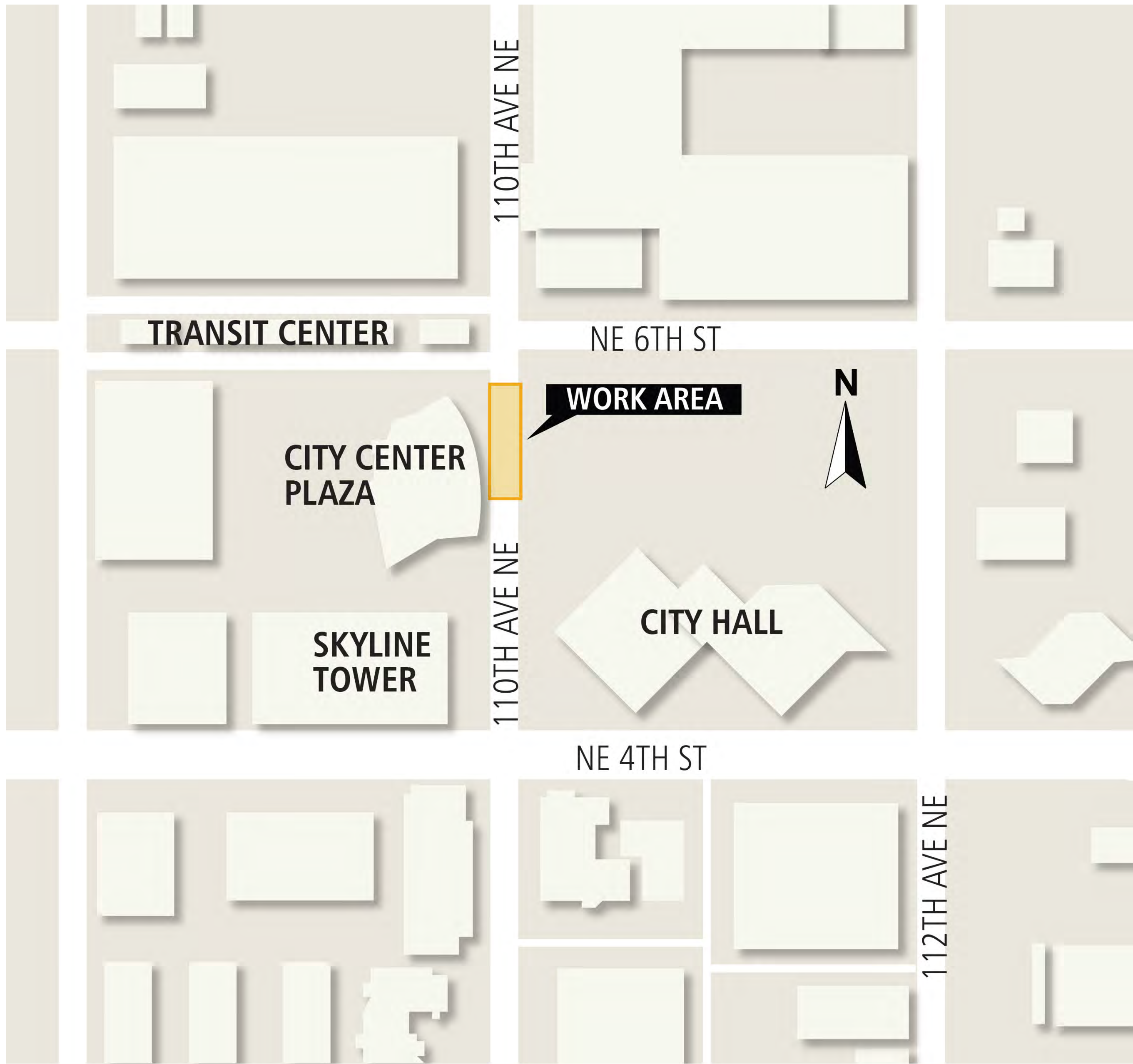


North tunnel portal construction – traffic control

This summer, Sound Transit will begin a long-term closure of a portion of 110th Avenue NE between NE 4th and NE 6th streets in order to construct the north tunnel portal near Bellevue City Hall.

As early as this August, the closure on 110th Avenue NE will begin and occur in multiple phases:

- **Phase 1 (approximately Summer 2017 – Spring 2018):** scheduled to last approximately nine months, phase 1 will require the closure of all lanes on 110th Avenue in the work area (illustrated in the graphic) from NE 6th Street to just north of the entrance to the City Center garage.
- **Phase 2 (approximately Spring 2018 – Winter 2018):** one lane of traffic will be reopened in both the north and southbound direction.
- **Phase 3 (approximately Winter 2018 – Spring 2019):** phase 3 will require a full closure of all lanes on 110th Avenue in the work area (illustrated in the graphic) as utilities are reinstalled and the roadway is restored.



AREA 4: ELEVATED LIGHT RAIL STRUCTURE AND WILBURTON STATION

EAST LINK EXTENSION



Key construction elements

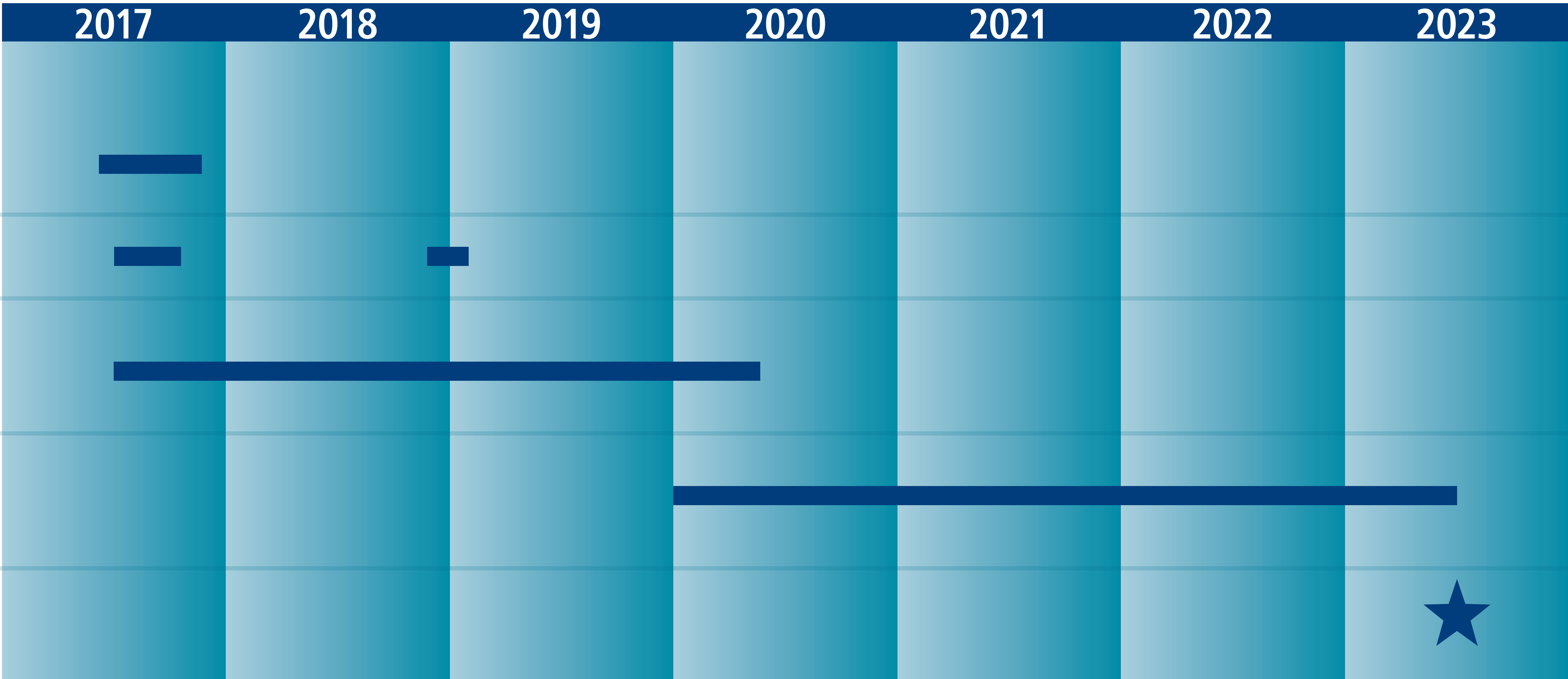
- Structure demolition
- Elevated light rail construction including a long-span over I-405
- Sturtevant Creek pedestrian bridge
- Wilburton Station

Typical work hours:
Monday-Friday, 7 am-6 pm

Work in area 4 will require night and weekend construction during select time periods

Approximate construction schedule

- Site preparation, clearing and demolition of structures
- Utility work
- Construction of infrastructure, Wilburton Station, elevated track and amenities
- Light rail systems installation, testing and certifications
- Light rail stations open and service begins



Elevated guideway construction

Nearly 40 columns will be constructed to support the elevated guideway that will cross I-405 and transport riders between the Bellevue Downtown and Wilburton stations.

Typical elevated guideway construction consists of:

1. Drilling shafts for column foundations
2. Installing columns
3. Building the guideway, bridge spans and rail

A long-span aerial guideway will be constructed to cross I-405. This work will require nighttime construction to build and remove temporary construction support and is anticipated to commence in mid-2018. After completion of the temporary construction support, work will resume during daytime hours. Additional night work will be necessary to set precast girders for the NE 8th Street crossing.



AREA 5: AT-GRADE TRACK NEAR NE 12TH ST

EAST LINK EXTENSION



Key construction elements

- Traction power substation
- Coordination with City of Bellevue's Spring Boulevard project
- Interface with Sound Transit's Operations and Maintenance Facility: East project

Typical work hours:
Monday-Friday, 7 am-6 pm

Approximate construction schedule

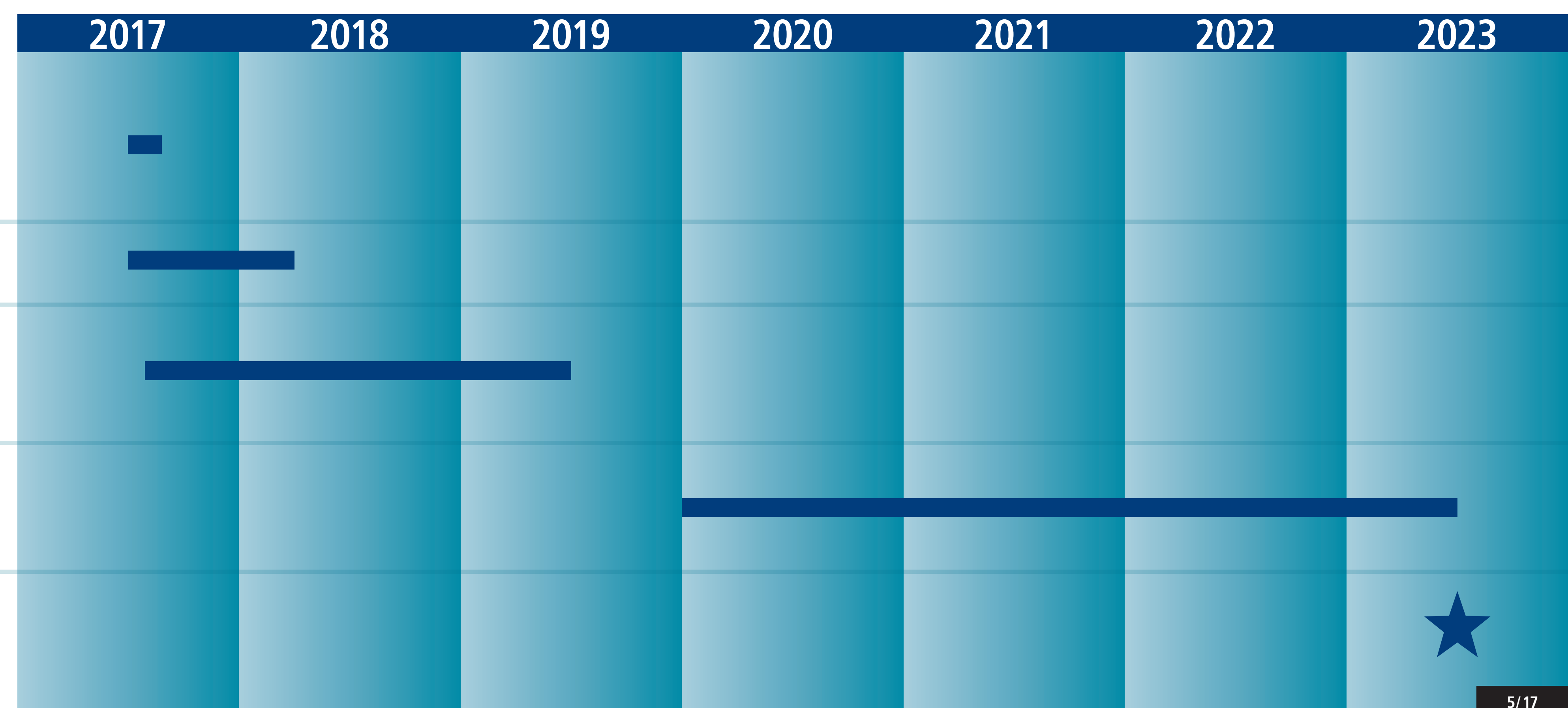
Site preparation, clearing and demolition of existing BNSF track

Utility work

Construction of infrastructure, track and amenities

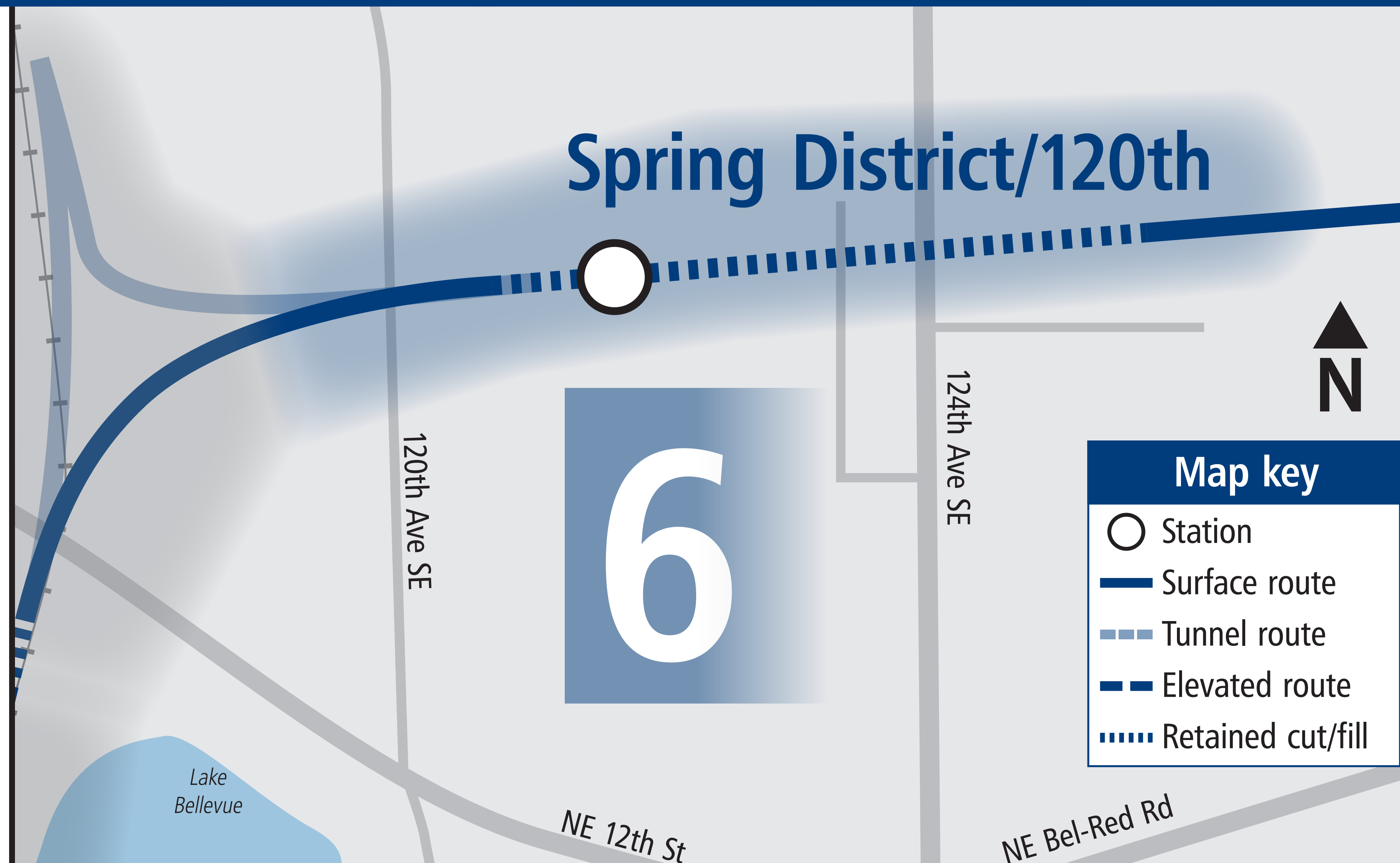
Light rail systems installation, testing and certifications

Light rail stations open and service begins



AREA 6: SPRING DISTRICT/120TH STATION

EAST LINK EXTENSION



Key construction elements

- Spring District/120th Station
- Coordination with City of Bellevue's 120th and 124th Avenue overpass projects

Typical work hours:
Monday-Friday, 7 am-6 pm

Approximate construction schedule

120th Avenue overpass (City of Bellevue project)

124th Avenue overpass (City of Bellevue project)

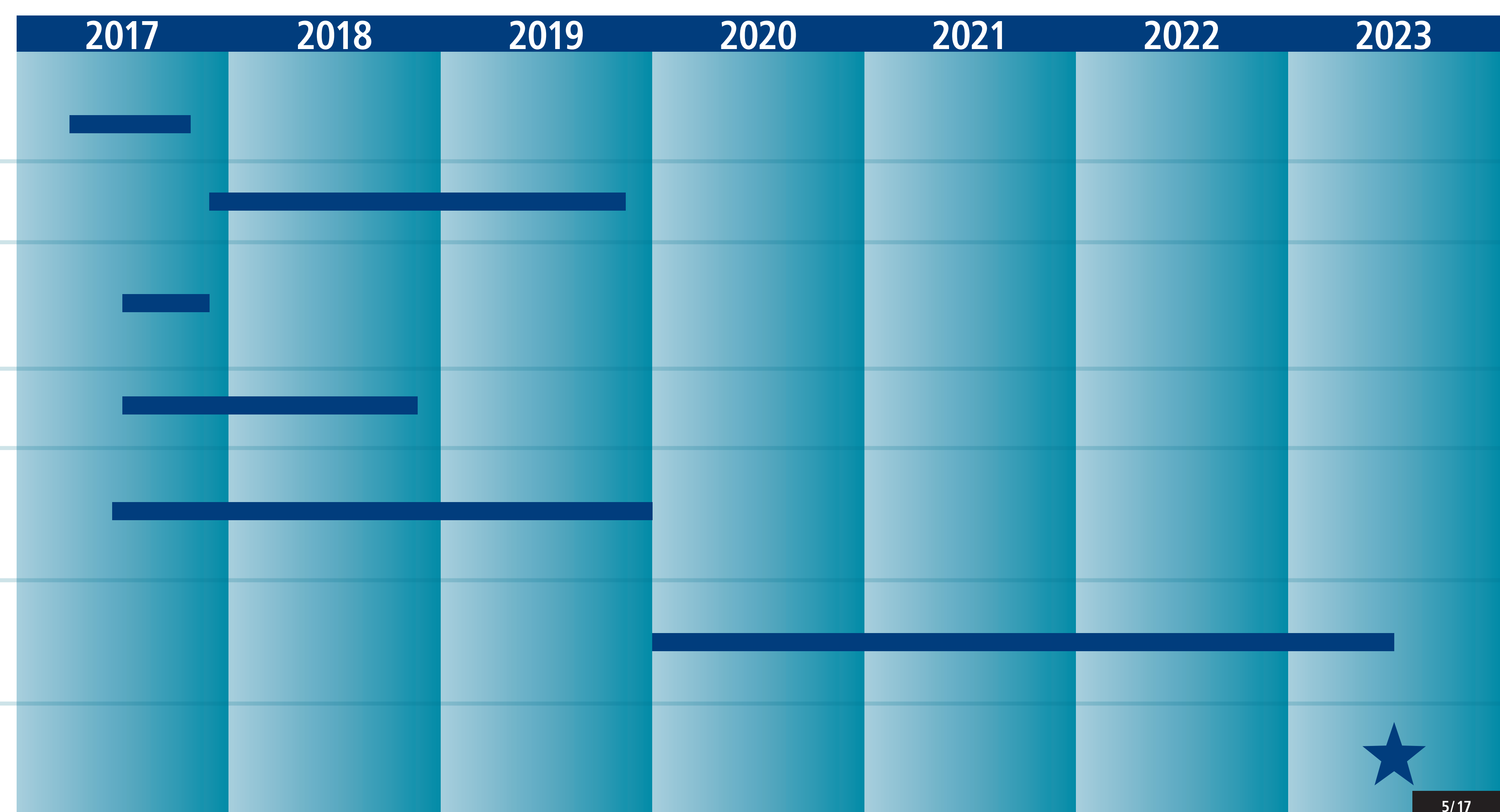
Site preparation, clearing and hardscape demolition

Utility work

Construction of infrastructure, Spring District/120th Station, track and amenities

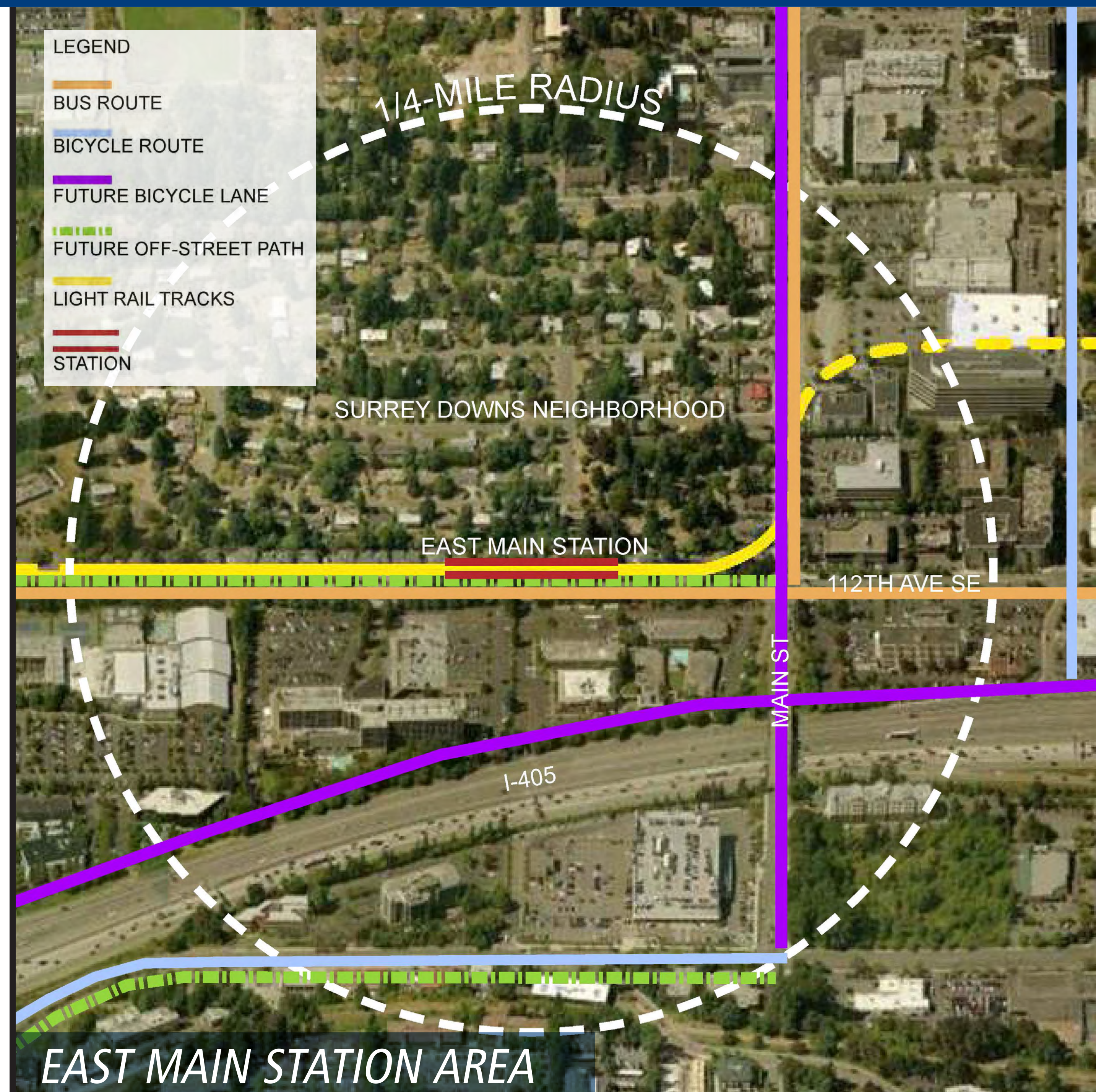
Light rail systems installation, testing and certifications

Light rail stations open and service begins



EAST MAIN STATION

EAST LINK EXTENSION



BELLEVUE DOWNTOWN STATION

EAST LINK EXTENSION



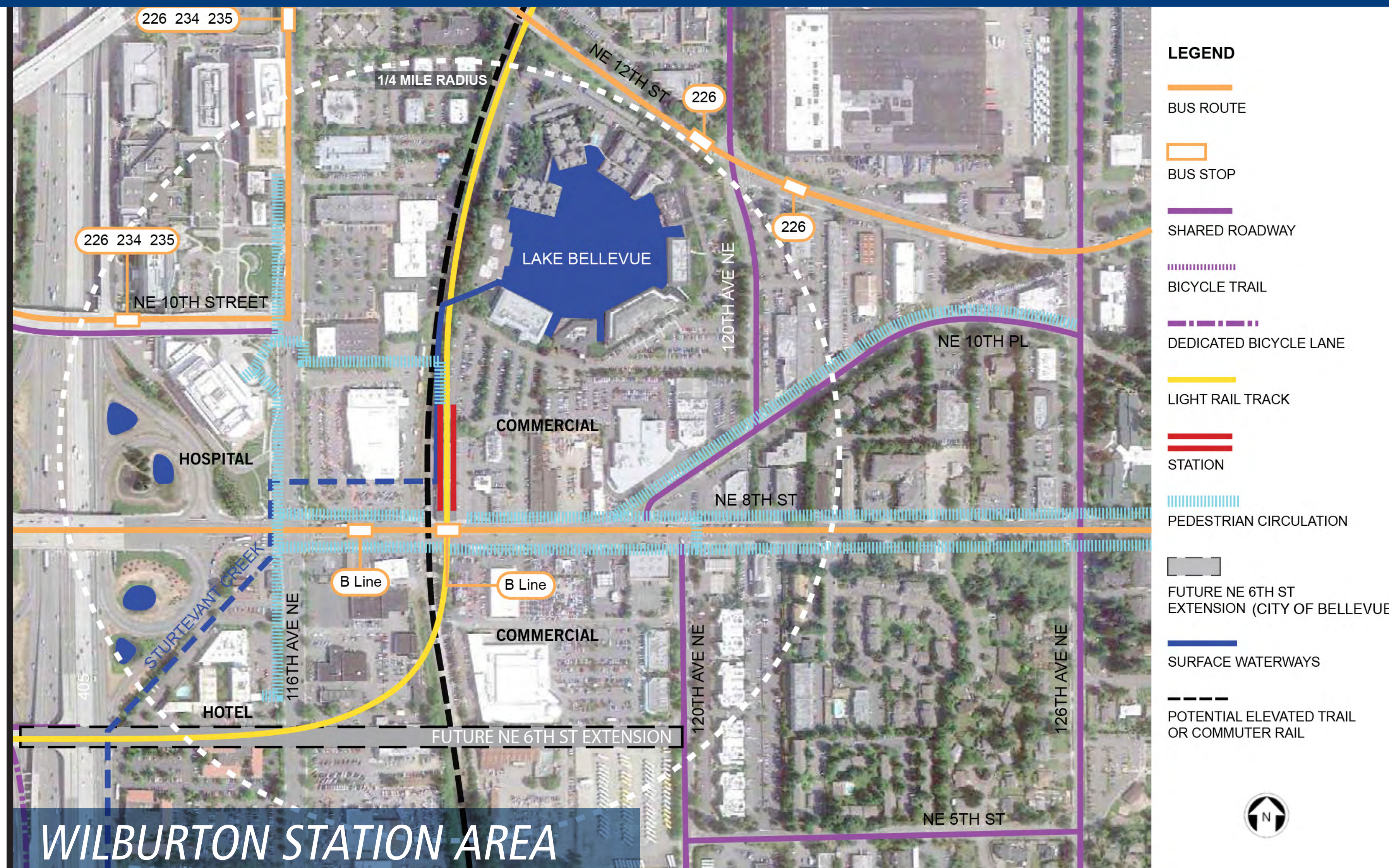
AERIAL VIEW



EAST ENTRANCE VIEW

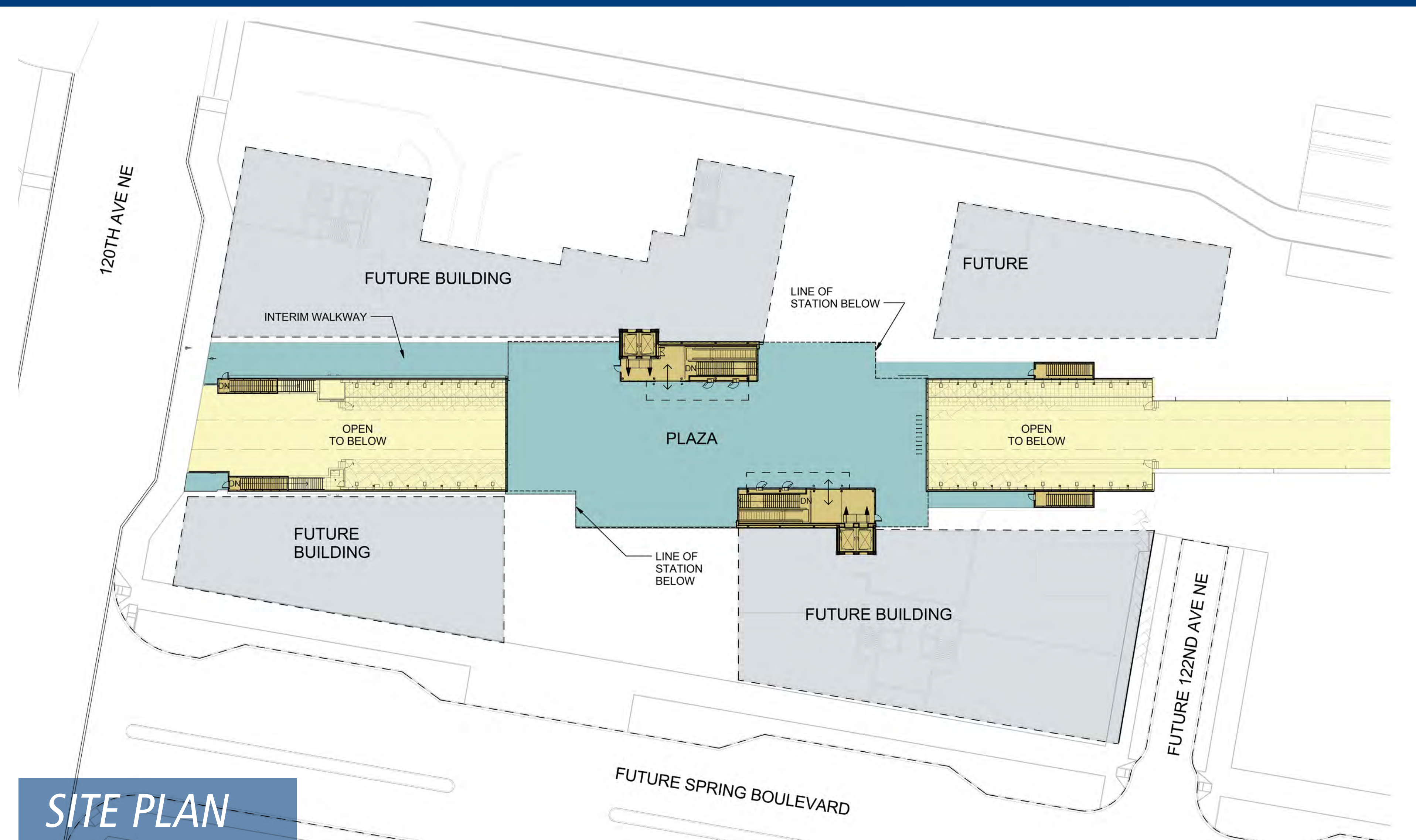
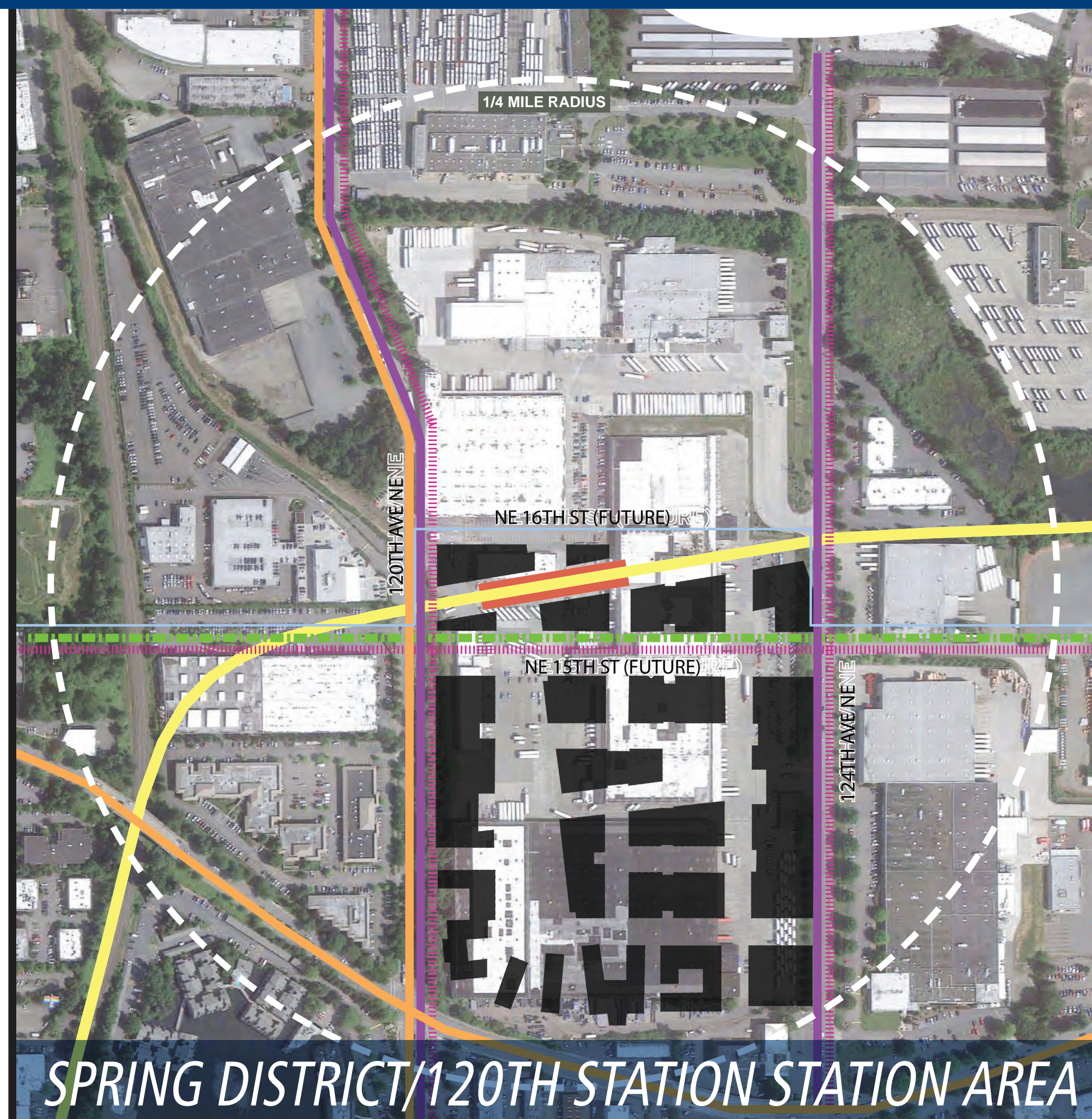
WILBURTON STATION

EAST LINK EXTENSION



SPRING DISTRICT/120TH STATION

EAST LINK EXTENSION



SOUND TRANSIT COMMUNITY OUTREACH

EAST LINK EXTENSION

Community Outreach's mission is to represent Sound Transit's interests in the community, and the community's interest in Sound Transit. During construction, it is our job to keep community members informed of major construction activities and project progress. We are your point of contact for Sound Transit's projects.

Good Neighbor Commitments:

- Provide advanced notification of work activities.
- Maintain business and residential access.
- Maintain a clean work site.
- Minimize noise, dust and debris.
- Provide wayfinding and signage.
- 24-hour construction hotline.

Contact us

tel: 206-398-5465

email: eastlink@soundtransit.org

web: soundtransit.org/eastlink

24-hour Construction Hotline:

1-888-298-2395

*For issues that need immediate attention
after normal business hours*

