

WELCOME TO SOUTH BELLEVUE CONSTRUCTION KICKOFF OPEN HOUSE

EAST LINK EXTENSION

The purpose of tonight's meeting is to:

- Provide an overview of key project elements.
- Introduce the community to members of the construction team.
- Present details on early construction activities.

Agenda

5-7 p.m. Open House

Meet with project staff, and view display boards and graphics featuring information about construction activities in south Bellevue.

7 p.m. Meeting adjourns



CURRENT AND FUTURE LINK SERVICE

EAST LINK EXTENSION





Judkins Park Station



Mercer Island Station



South Bellevue Station

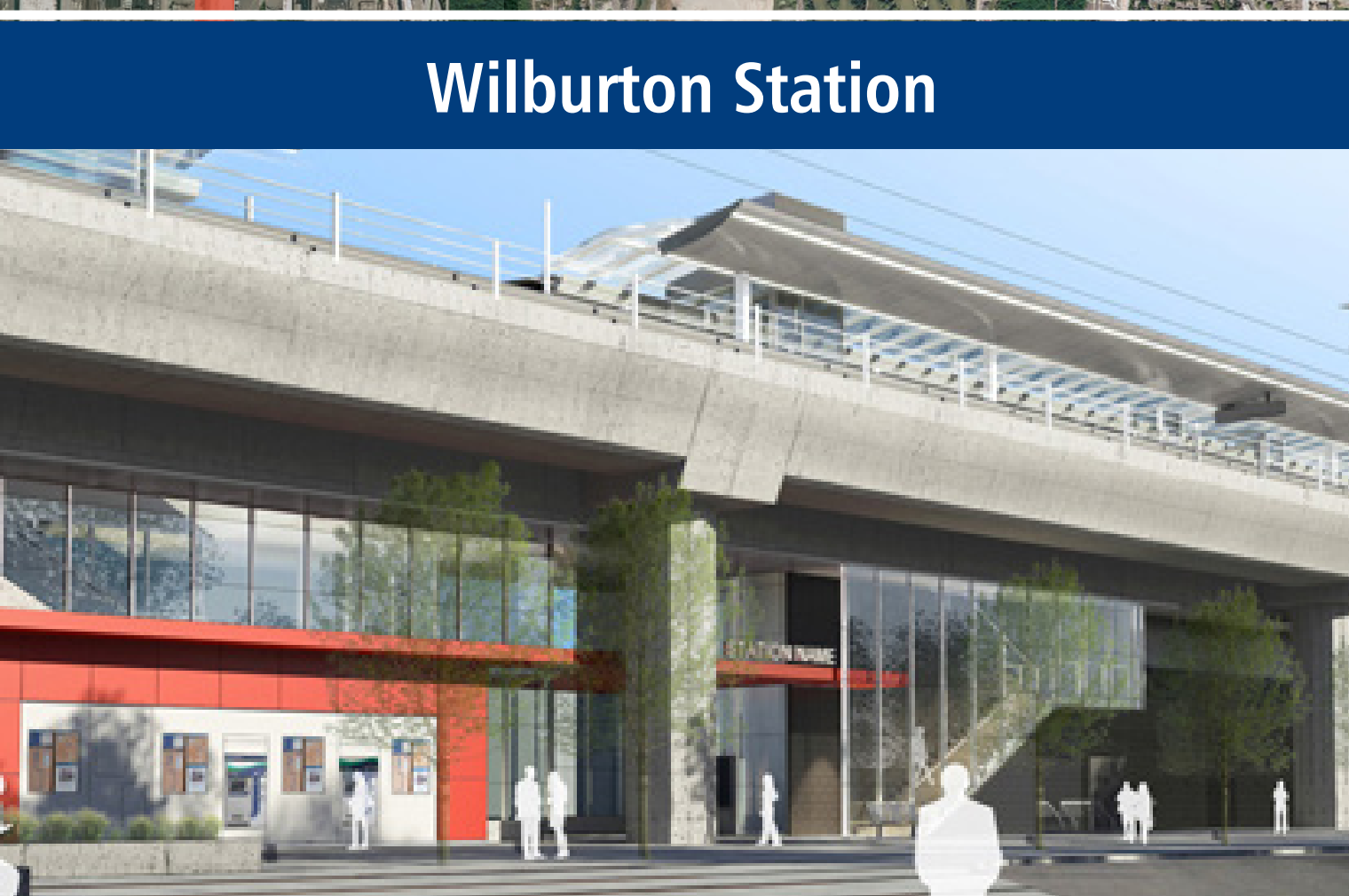


East Main Station



Bellevue Downtown Station

East Link Extension



Wilburton Station



Spring District/120th Station



Bel-Red/130th Station



Overlake Village Station



Redmond Technology Center Station

LIGHT RAIL ALIGNMENT

EAST LINK EXTENSION



Length: 14 miles

Ride times:

- Mercer Island to University of Washington: 20 minutes
- East Main to Westlake: 21 minutes
- Redmond Technology Center to Bellevue Downtown: 10 minutes

Rider projection: About 50,000 riders will use East Link every day by 2030

Budget: \$2.8 billion (2010 \$)

Start of service: Targeted 2023

2006-2011

Planning and environmental review

2011-2015

Final design

2015

Start of advanced utility relocation

2016-2022

Heavy civil construction

Targeted 2022

Testing & pre-operations

Targeted 2023

East Link in service

SOUTH BELLEVUE SEGMENT OVERVIEW

EAST LINK EXTENSION



Benefits:

- Provides access to high quality, frequent transit service that operates 20 hours per day.
- Approximately 4,500 daily boardings (2030).
- Increases travel options for South Bellevue residents and employees, consistent with City of Bellevue transportation goals.
- Expands the South Bellevue Park-and-Ride to approximately 1,500 stalls.
- Bus transfer and layover areas.

Travel times (from South Bellevue Station)

- International District/Chinatown = 14 minutes
- University of Washington = 24 minutes
- Sea-Tac Airport = 50 minutes (with transfer at International District Station)
- Redmond Technology Center = 16 minutes

SOUTH BELLEVUE STATION



NORTH ENTRY



PLATFORM LOOKING SOUTH

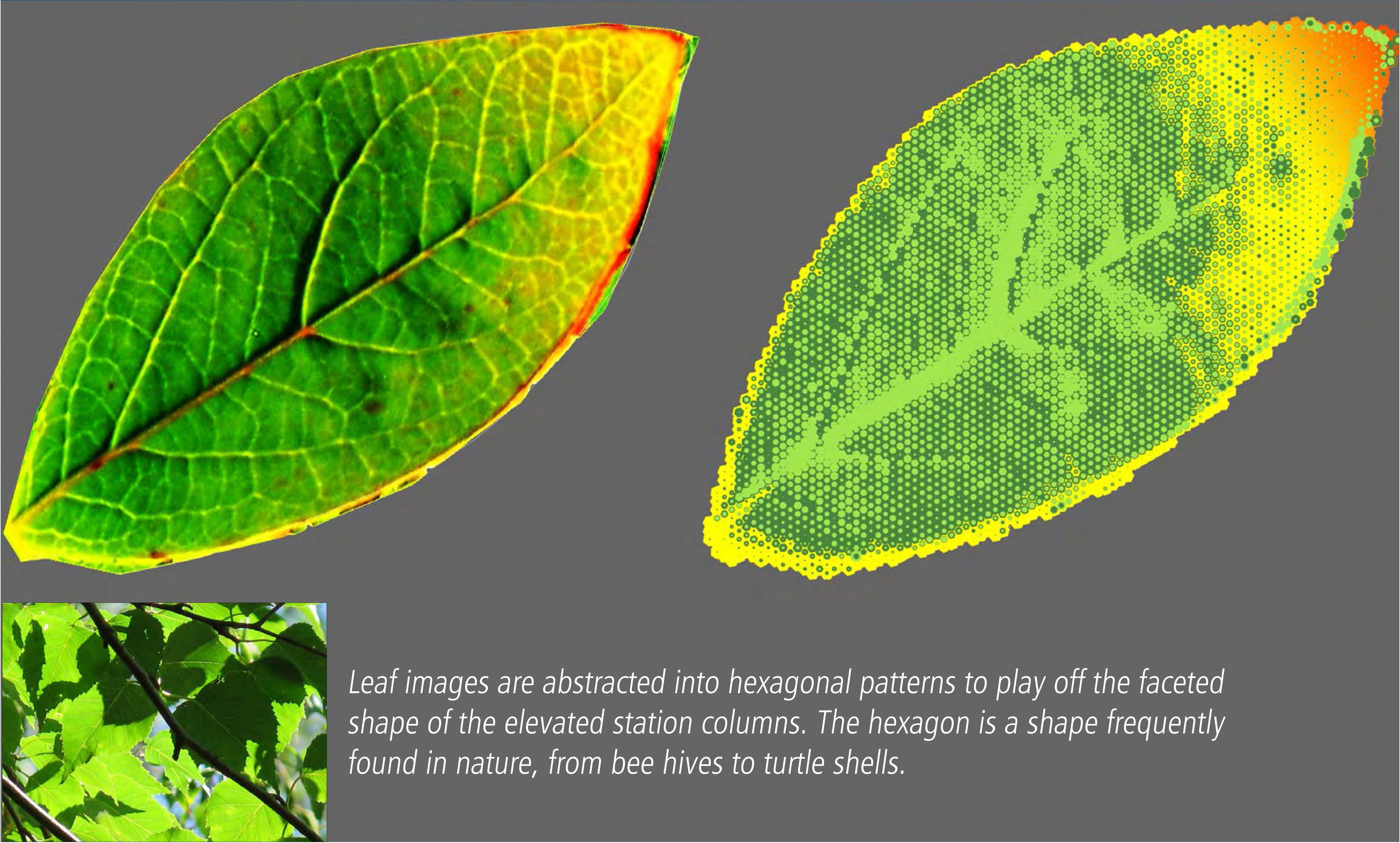


SOUTH ENTRY



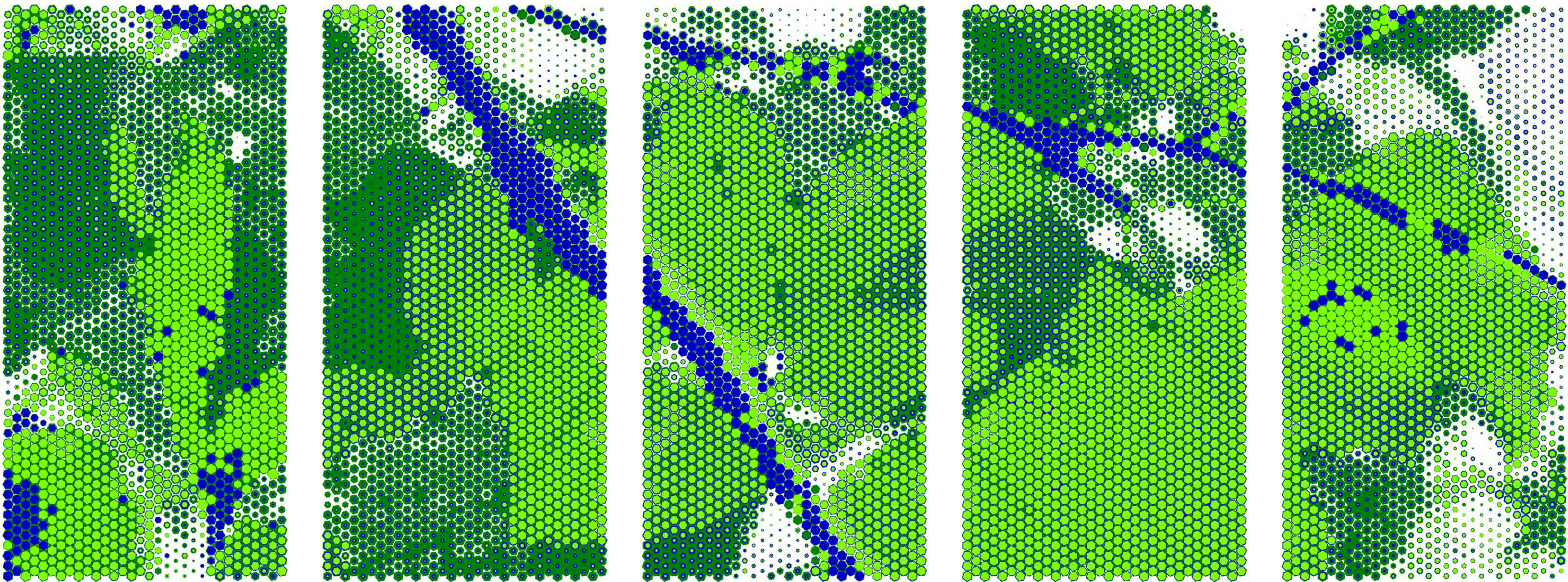
GARAGE SOUTH ENTRY

STATION ART – VICKY SCURI



Leaf images are abstracted into hexagonal patterns to play off the faceted shape of the elevated station columns. The hexagon is a shape frequently found in nature, from bee hives to turtle shells.

“My practice specializes in infrastructure as public place, because infrastructure, best symbolized as the backbone of urban design, is the system upon which society builds its core values, creating meaning, mobility and connectivity.”
– Vicki Scuri



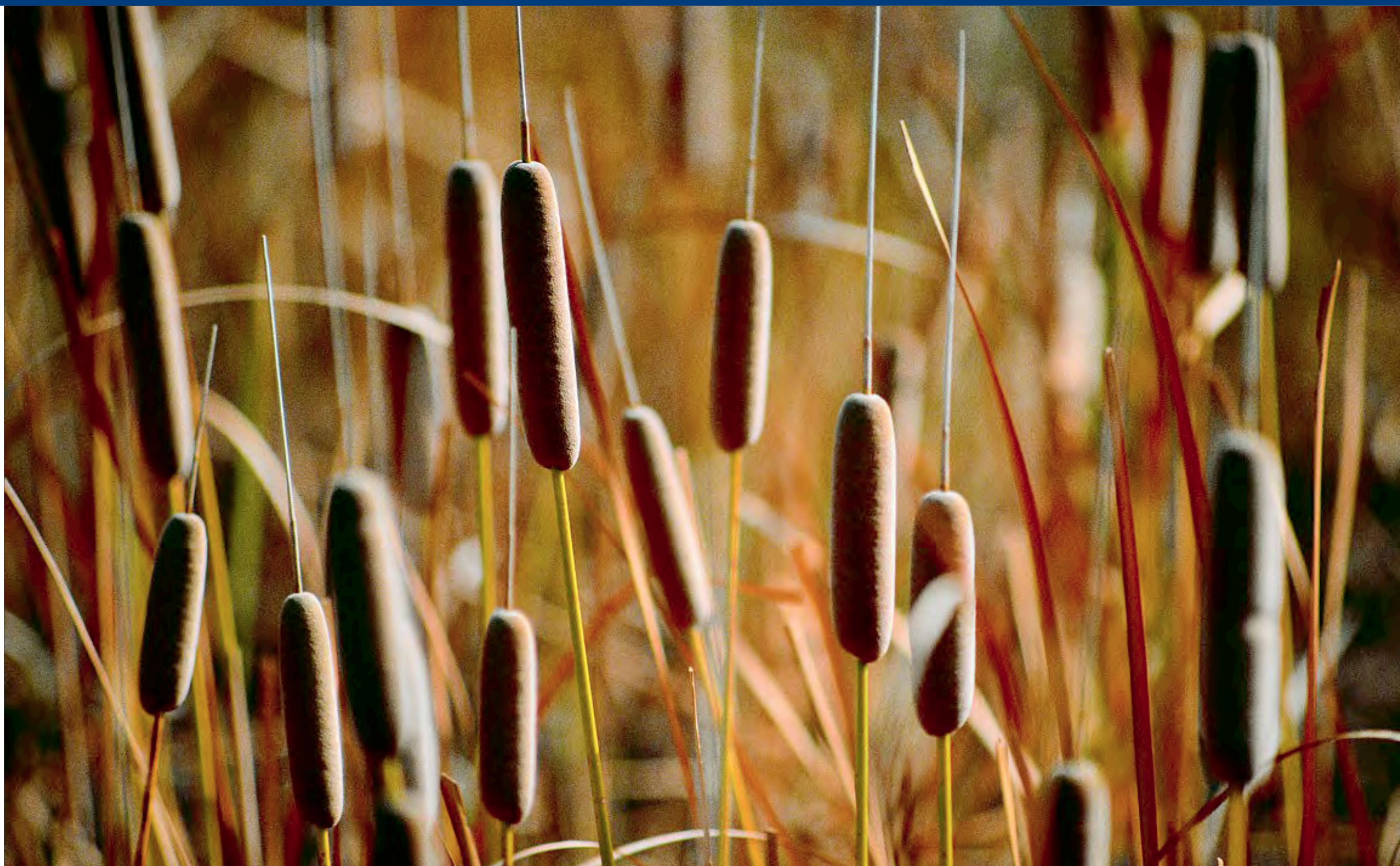
ACOUSTIC PANELS DESIGN: Hundreds of feet of unique patterns can be created from the five initial designs.



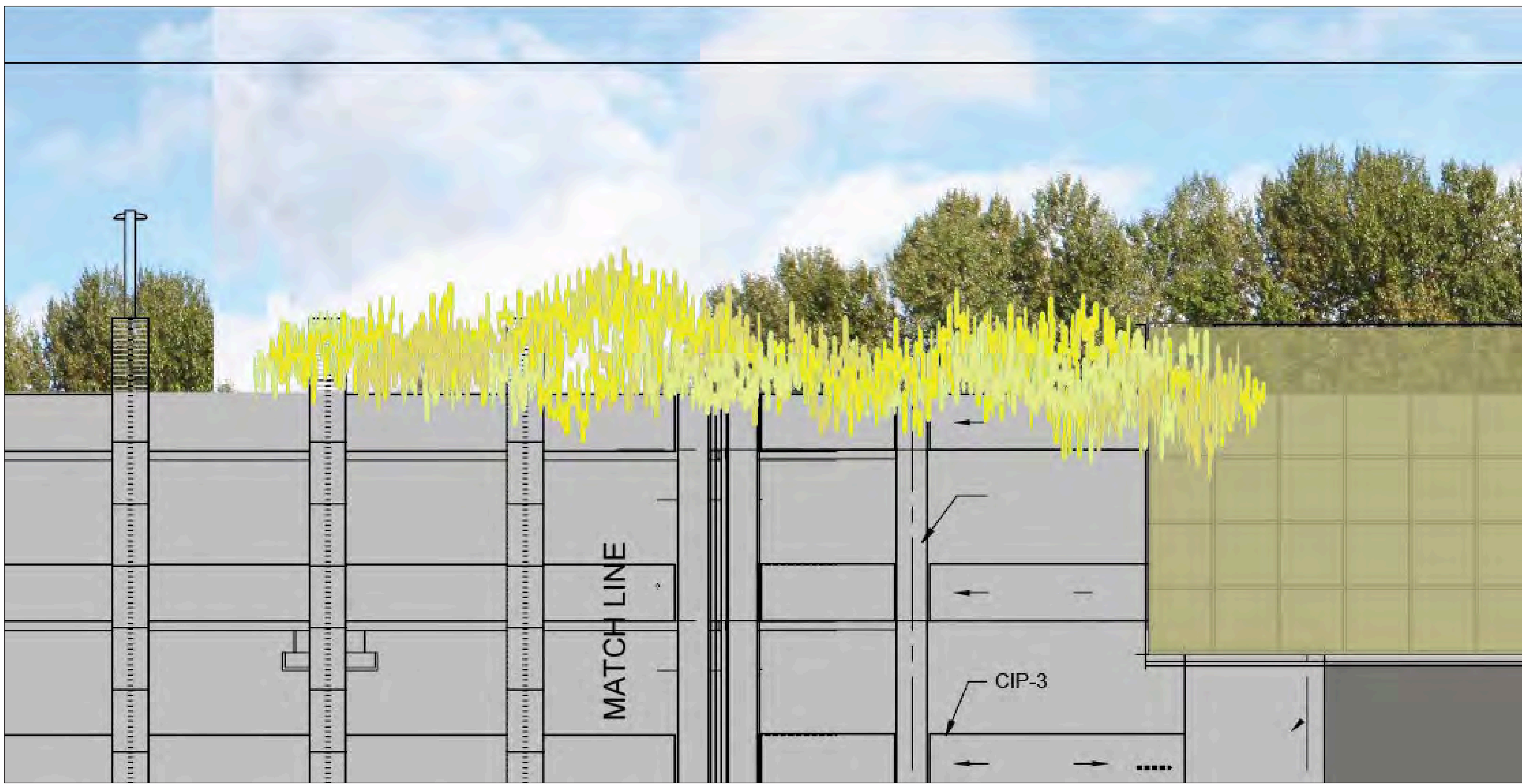
Inspired by light pouring through the plant canopy at Mercer Slough, Scuri abstracted leaf shapes for patterns on the acoustic panels and station columns. Glass patterns are under consideration.



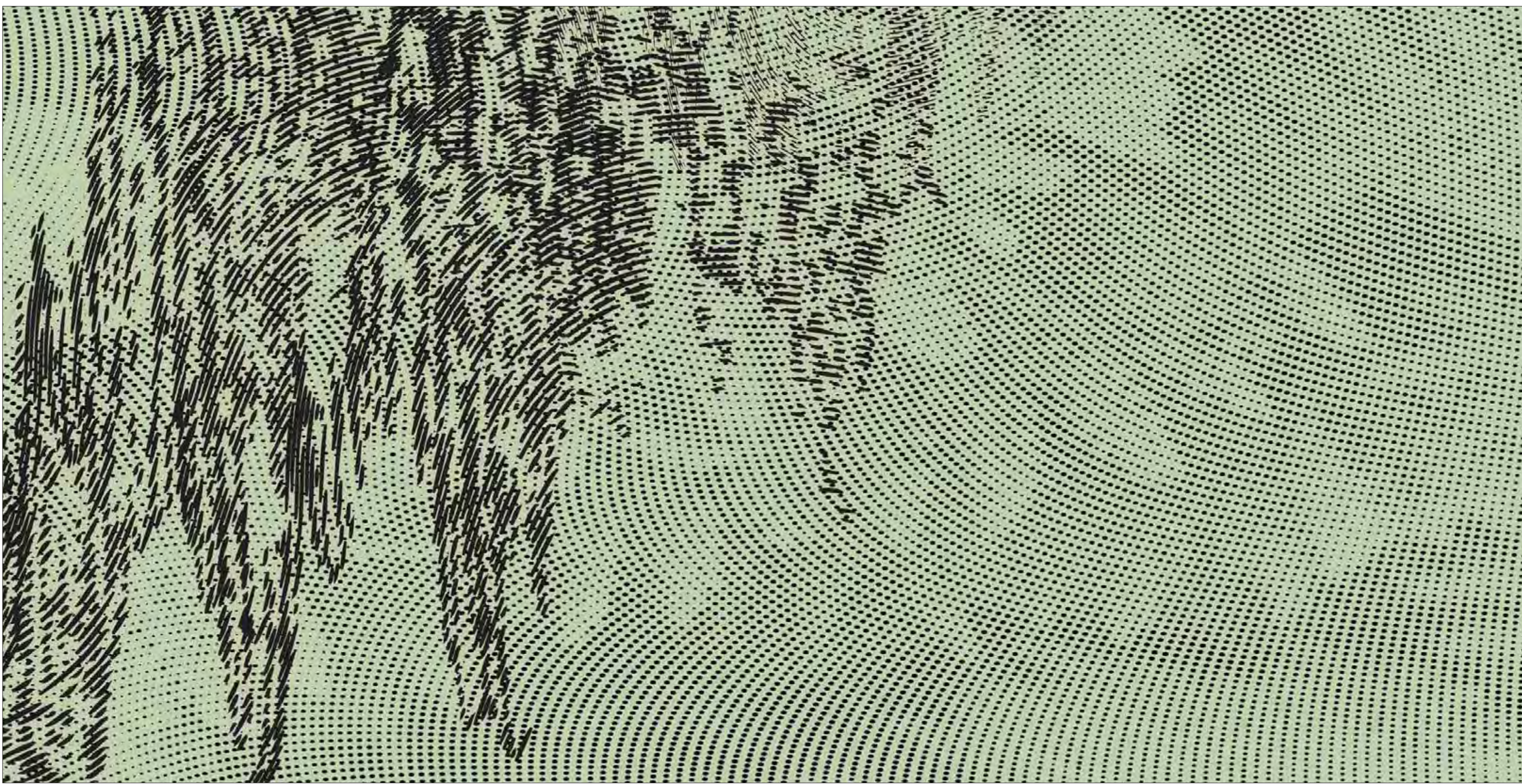
STATION ART – KATY STONE



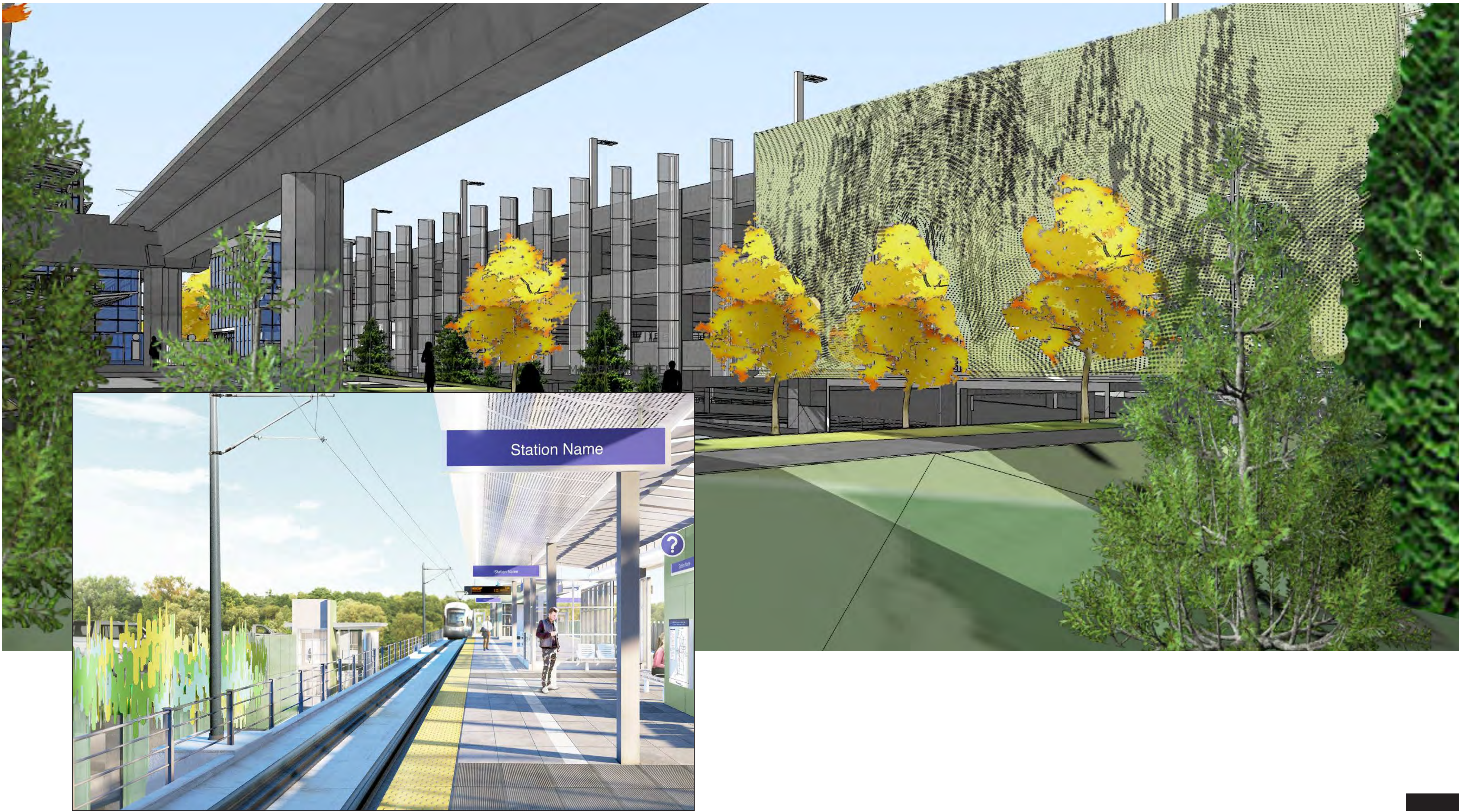
“Evoking natural forms and processes, both familiar and fantastical, the images are just a step away from dissolving into masses of line or shape.”
– Katy Stone



Stone’s cattail inspired sculpture is carefully sited along the top edge of the garage for prime viewing by passengers both waiting and riding the train.



Stone is collaborating with architects Perkins + Will in designing a willow-inspired perforation pattern for the metal screening on the west side of the garage, that captures the motion in nature



CONSTRUCTING THE SOUTH BELLEVUE STATION

EAST LINK EXTENSION

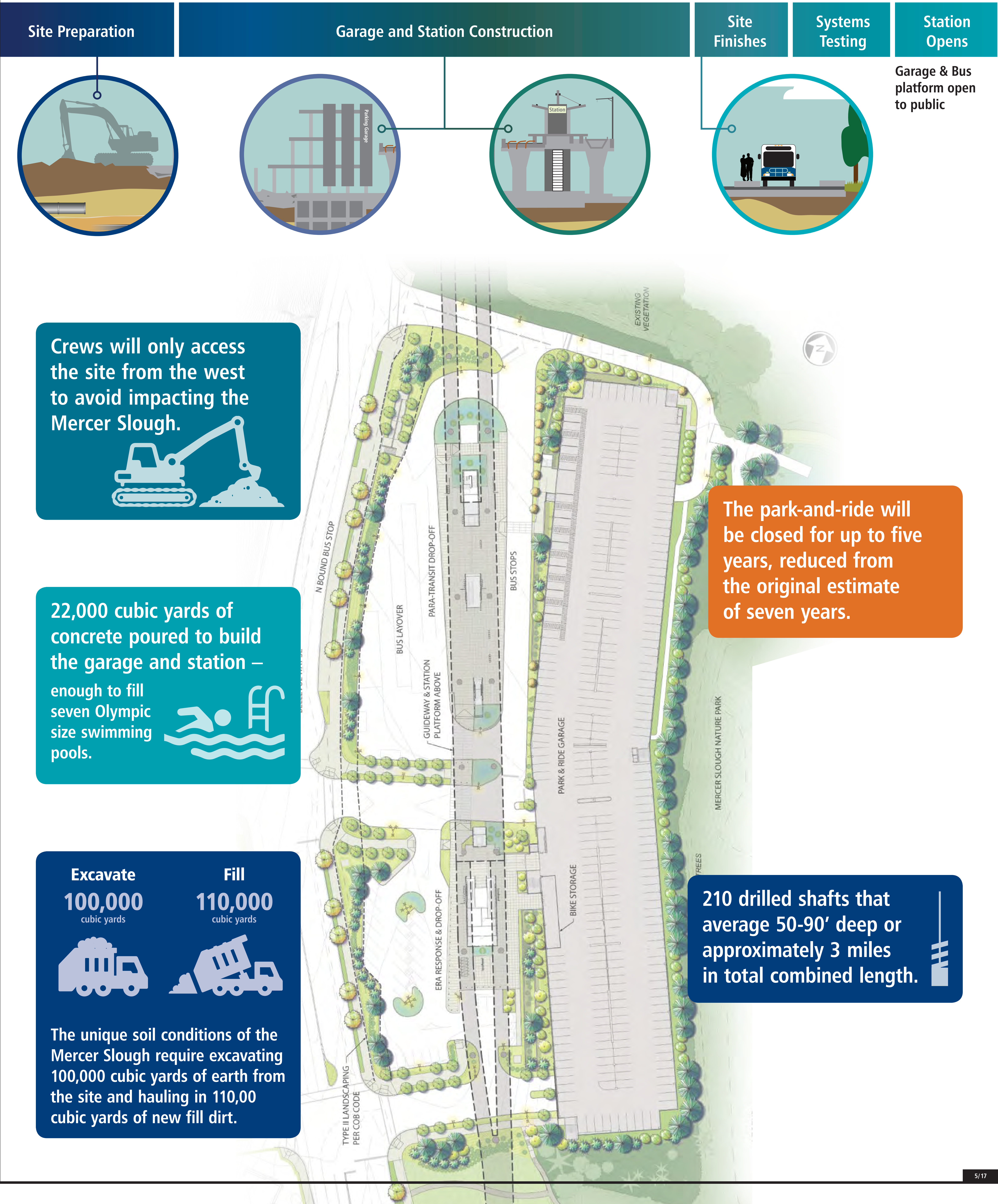
Sound Transit will kick-off East Link construction in south Bellevue in May 2017. One of the first activities in the area will be closing the South Bellevue Park-and-Ride for up to five years. The South Bellevue Station will be located at the current South Bellevue Park-and-Ride site.

- The station will include bus and paratransit facilities, public art, space for passenger drop-off and approximately 1,500 parking stalls, nearly tripling today's parking capacity. During East Link construction, Sound Transit's contractor will use the park-and-ride site to stage equipment and materials.
- Sound Transit opened new park-and-ride lots in Eastside communities. Bus routes at these lots connect with many of the same routes and destinations as those serving the South Bellevue Park-and-Ride. Visit the East Link Park and Ride closure page to view the interactive map with new park-and-ride locations.

2017

2023

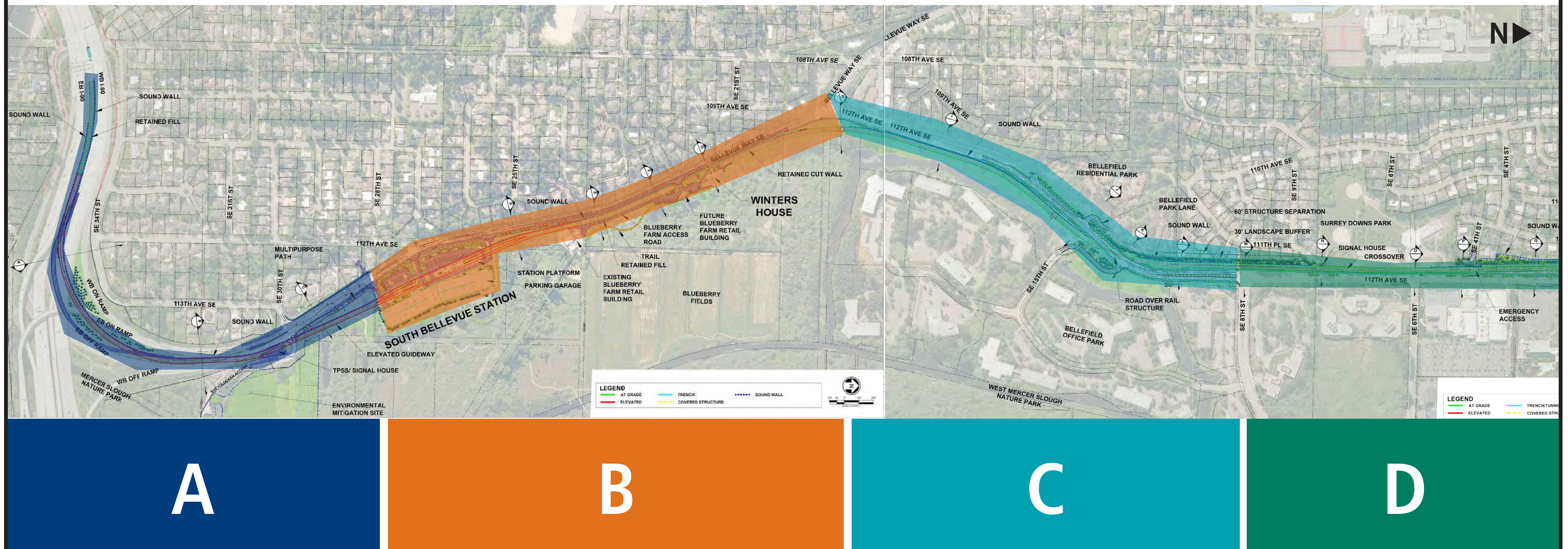
Approximately 5 years of construction



SOUTH BELLEVUE CONSTRUCTION

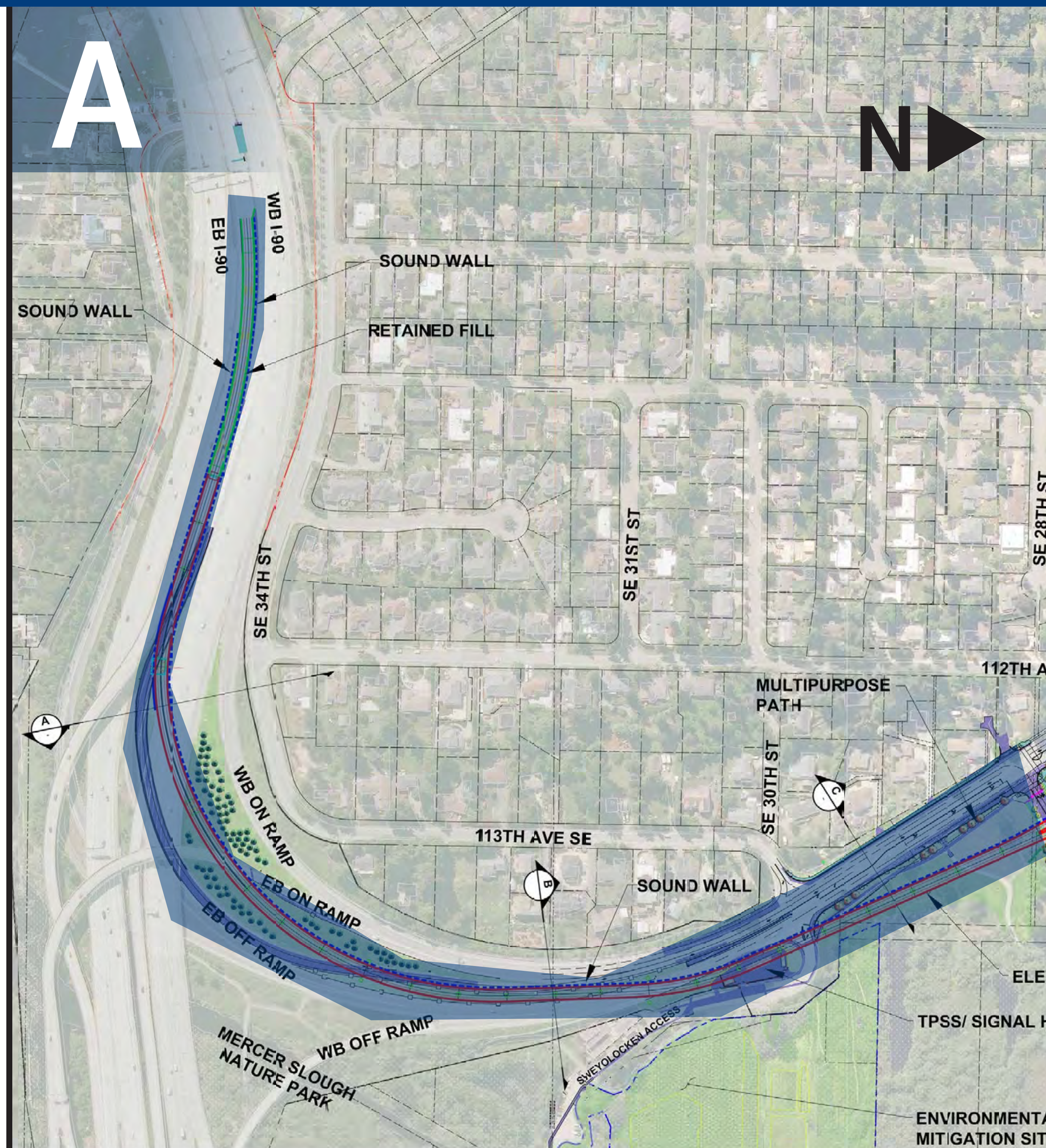
EAST LINK EXTENSION

Activities will be broken down into four zones:



SOUTH BELLEVUE CONSTRUCTION AREA A

EAST LINK EXTENSION



Key project components/elements:

- Track slab and retained fill in I-90 center roadway.
- Columns – drilled shafts, concrete rebar, formwork and pouring.
- Aerial guideway precast tubs and long span over I-90 mainline.
- Traction Power substation.

Early activities:

- Utility relocation – weekend closures of Bellevue Way SE.
- Clearing and grading.
- Column construction.

LONG SPAN SEGMENTAL GUIDEWAY

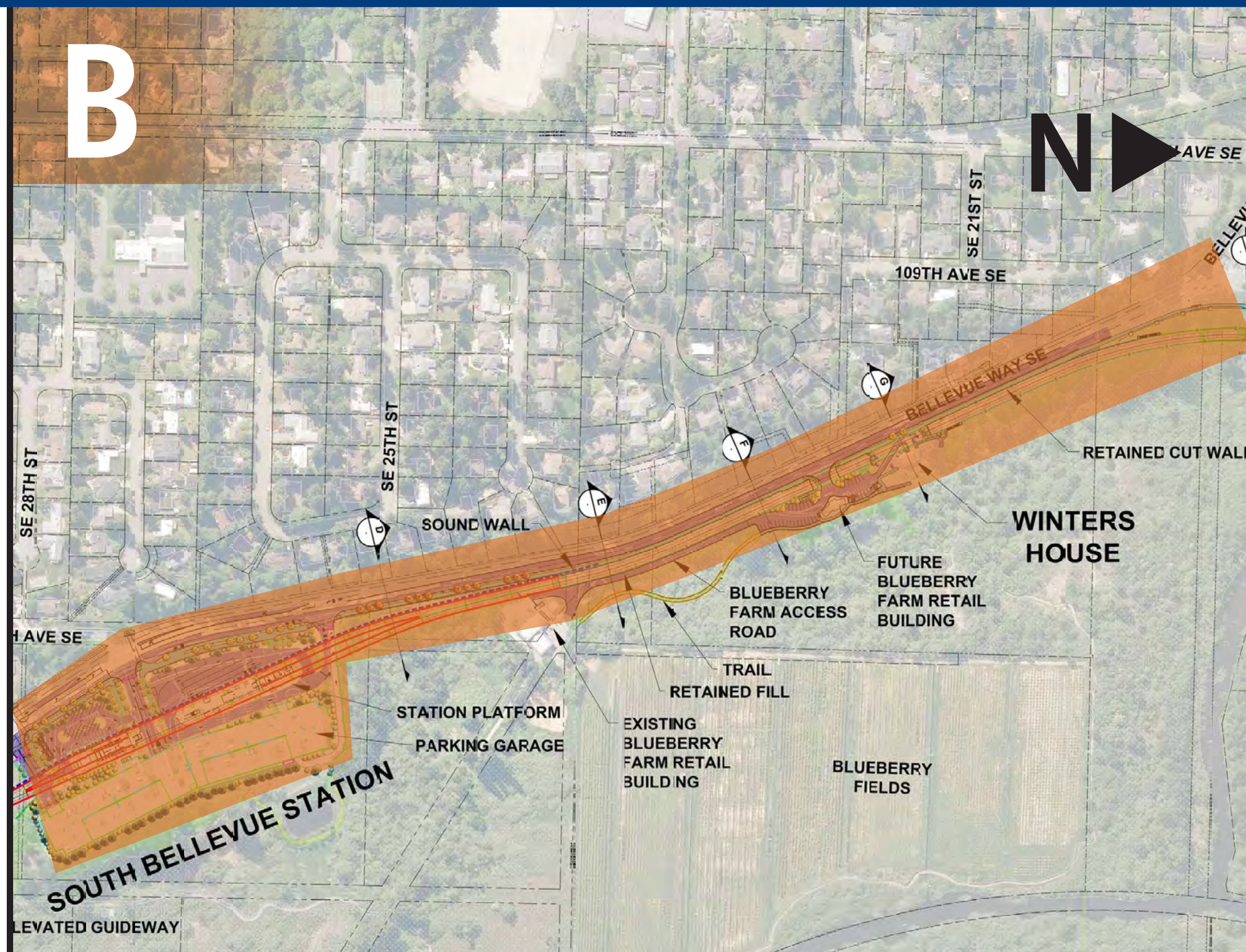


DOUBLE TRACK AERIAL GUIDEWAY



SOUTH BELLEVUE CONSTRUCTION AREA B

EAST LINK EXTENSION



Key project components/elements:

- Construction of columns and aerial guideway.
- Elevated station construction.
- Multi-story 1,500 stall parking garage.
- Retained fill construction from blueberry farm to Wye.
- Utility relocation.
- Excavation, grading and paving of roadway areas.

Early activities:

- Archaeological work.
- Utility relocation – weekend closures of Bellevue Way SE.
- Demolition and clearing of construction site.
- Build new temporary trailhead parking lot and pedestrian walkway.

AERIAL GUIDEWAY TO RETAINED CUT

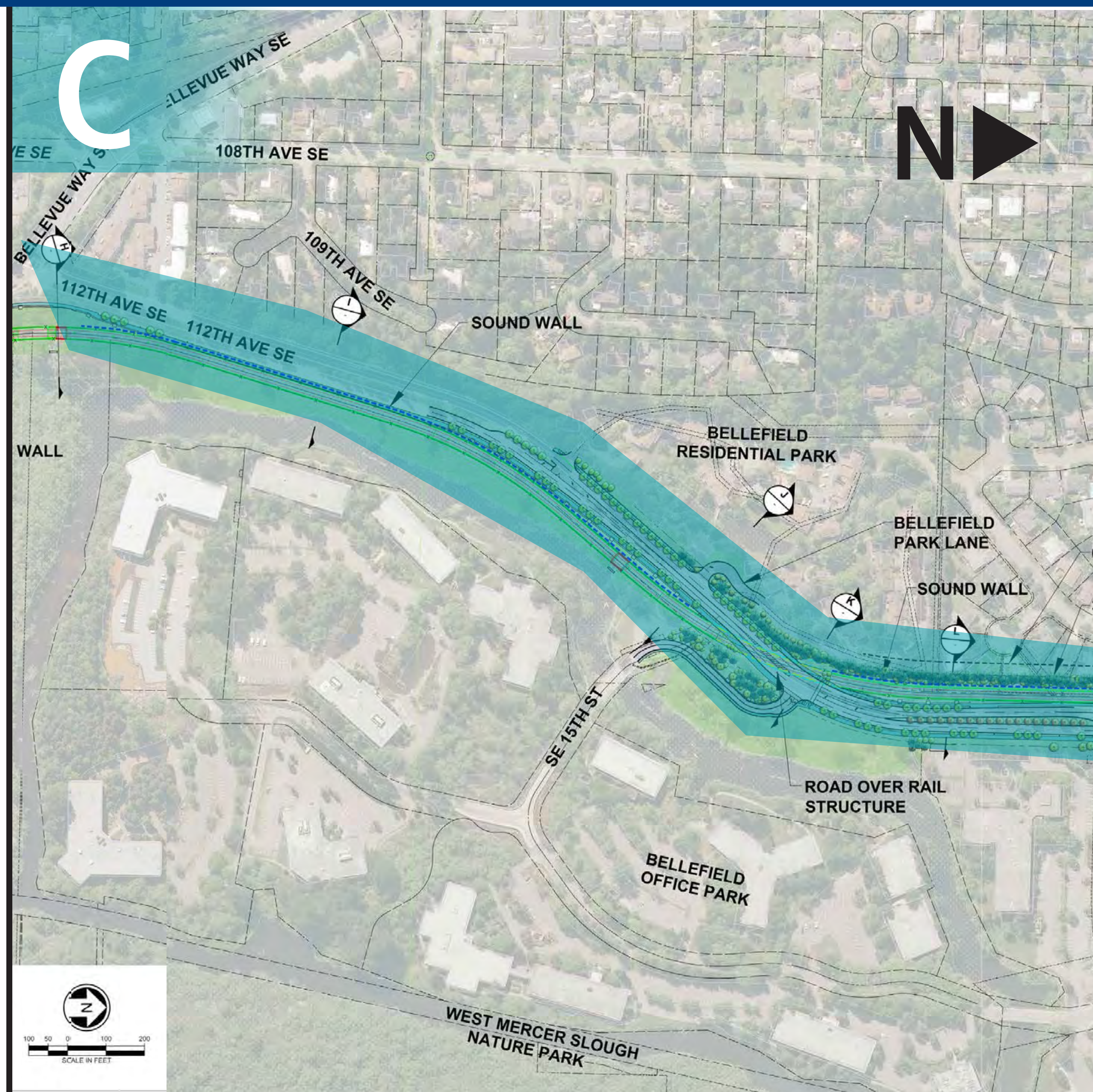


RETAINED CUT AT WINTERS HOUSE



SOUTH BELLEVUE CONSTRUCTION AREA C

EAST LINK EXTENSION



Key project components/elements:

- Construction of Wye and Alcove Creek crossings.
- At grade retained fill track structure, guideway with retaining walls, track walls and sound walls.
- Road over Rail construction and SE 15th realignment.
- Construction of temporary bypass road during construction of Road over Rail crossing.
- Utility relocation.
- Excavation, grading, and paving of roadway areas.

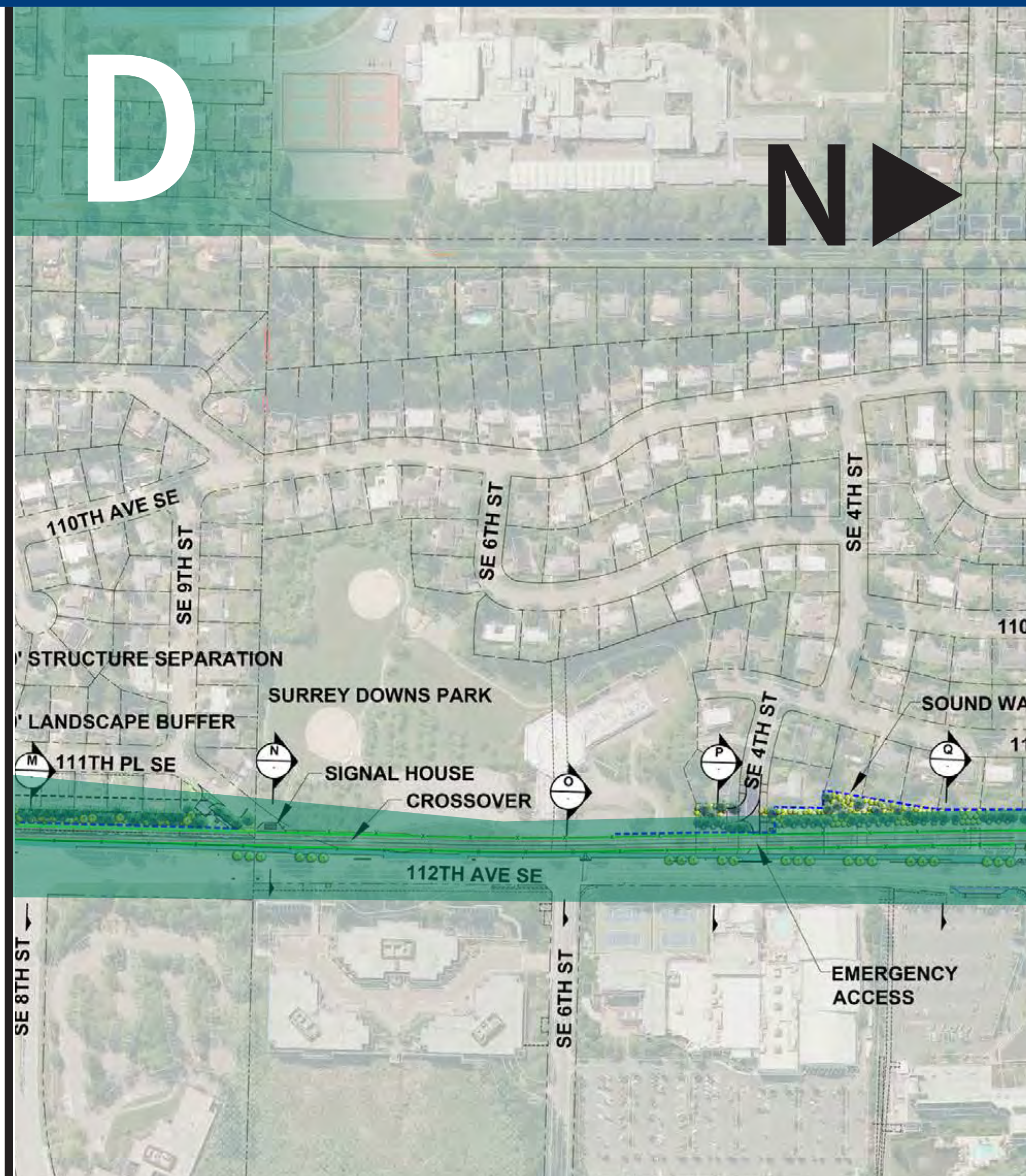
Early activities:

- Utility relocations.
- Anticipated 2018 start of bypass road for road over rail construction.



SOUTH BELLEVUE CONSTRUCTION AREA D

EAST LINK EXTENSION

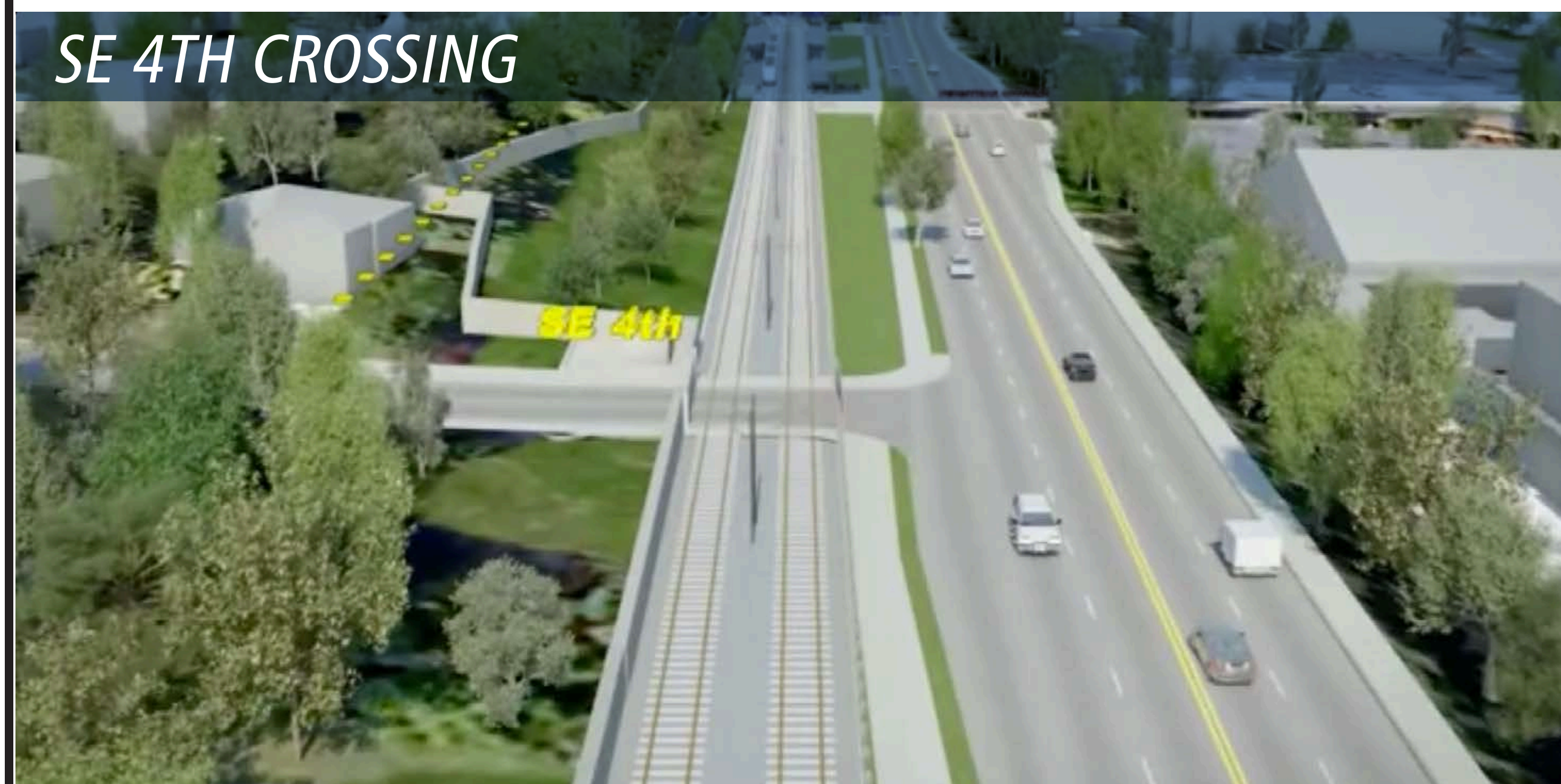


Key project components/elements:

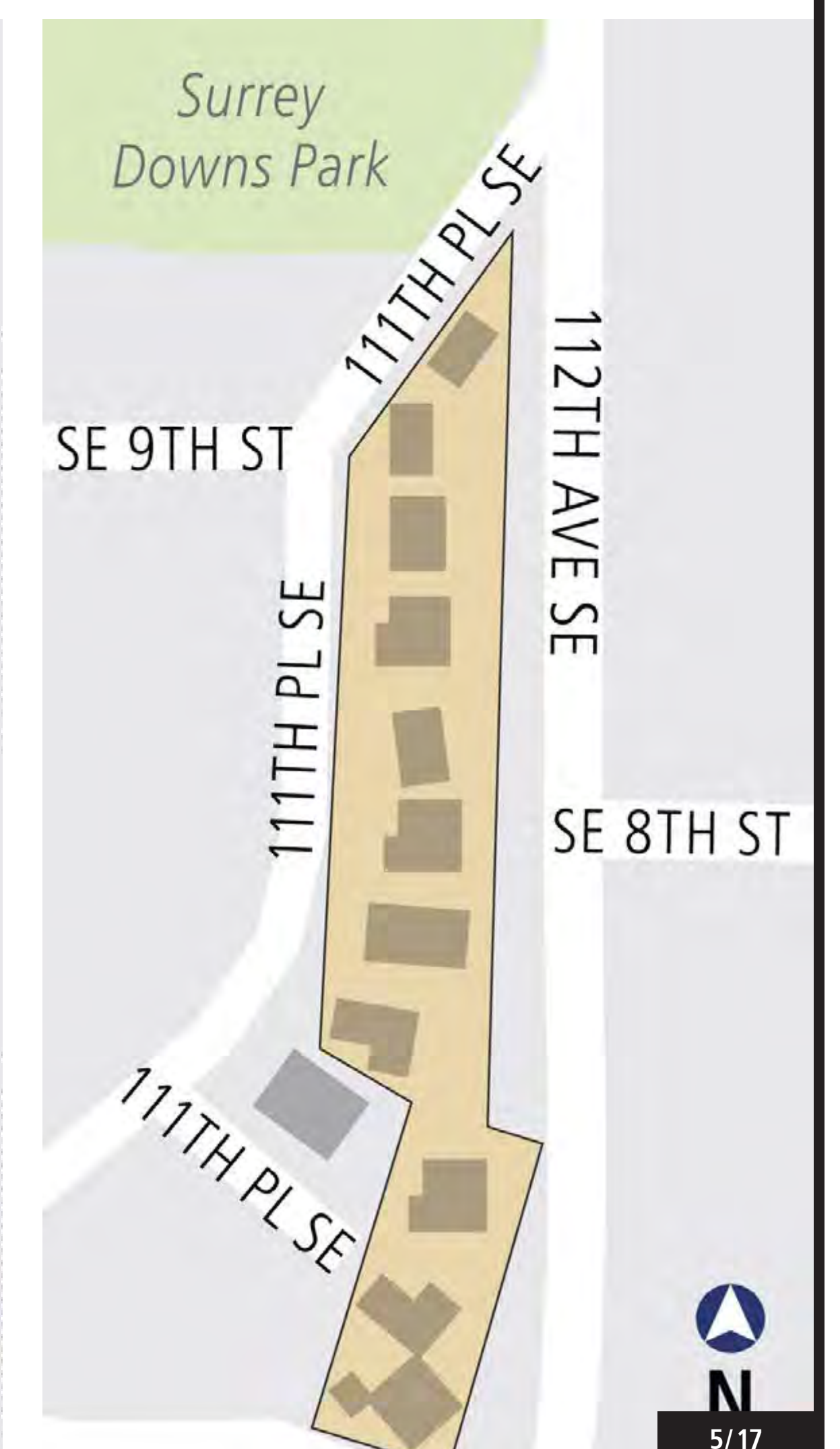
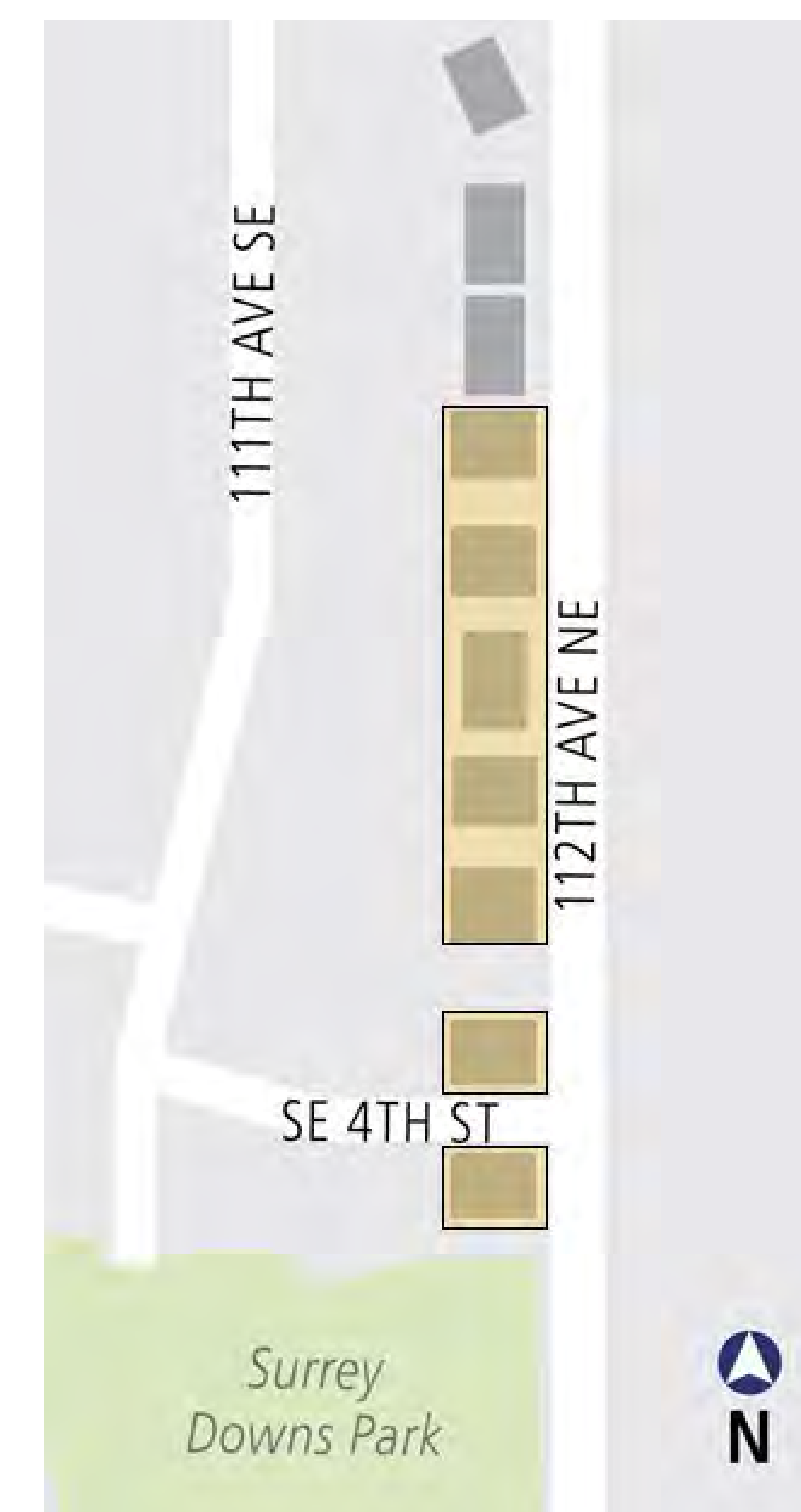
- Track work and sound walls.

Early activities:

- Pest Control.
- Soft demolition (interiors).
- Structure demolition.
- Clearing and grading.

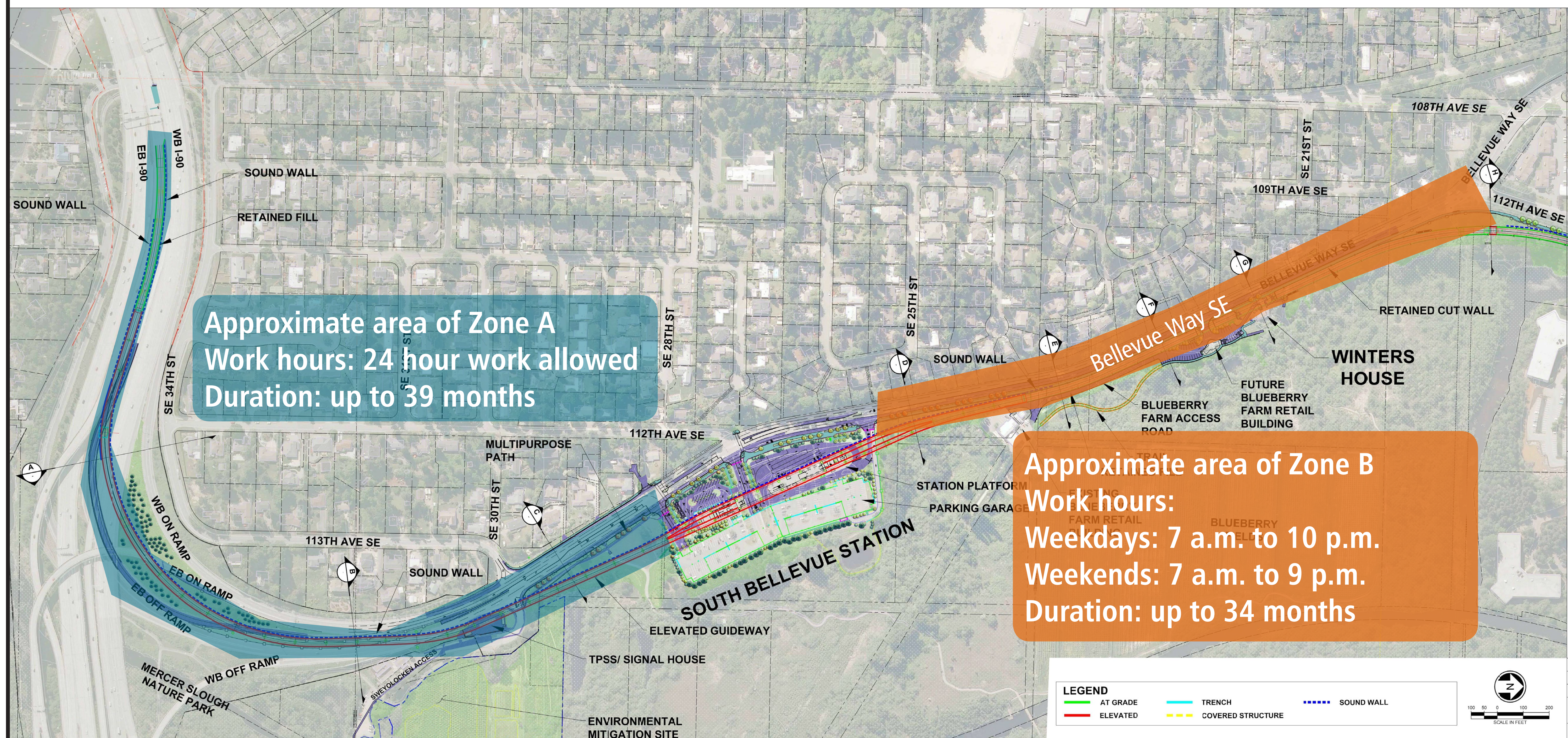


Stone will be relocated to SE 2nd and 108th Ave SE



SOUTH BELLEVUE CONSTRUCTION

EAST LINK EXTENSION



City of Bellevue code allows construction activity from 7 a.m. to 6 p.m. weekdays, and 9 a.m. to 6 p.m. on Saturdays. Sound Transit's contractor has been granted permission to work extended hours along Bellevue Way SE.

SUSTAINABILITY

EAST LINK EXTENSION

Sound Transit's regional public transit system creates easy connections to more places for more people. We are committed to leaving the planet a better place.

Our framework for sustainability:

People

Help people move freely by increasing the availability and use of regional transit

Planet

Promote environmental stewardship and conserve natural resources

Prosperity

Maximize agency efficiency and enable people and businesses to save time and money

Sound Transit is always looking for ways to apply sustainable design principles to our projects, including using renewable construction materials, natural drainage solutions and maximizing natural light at stations.

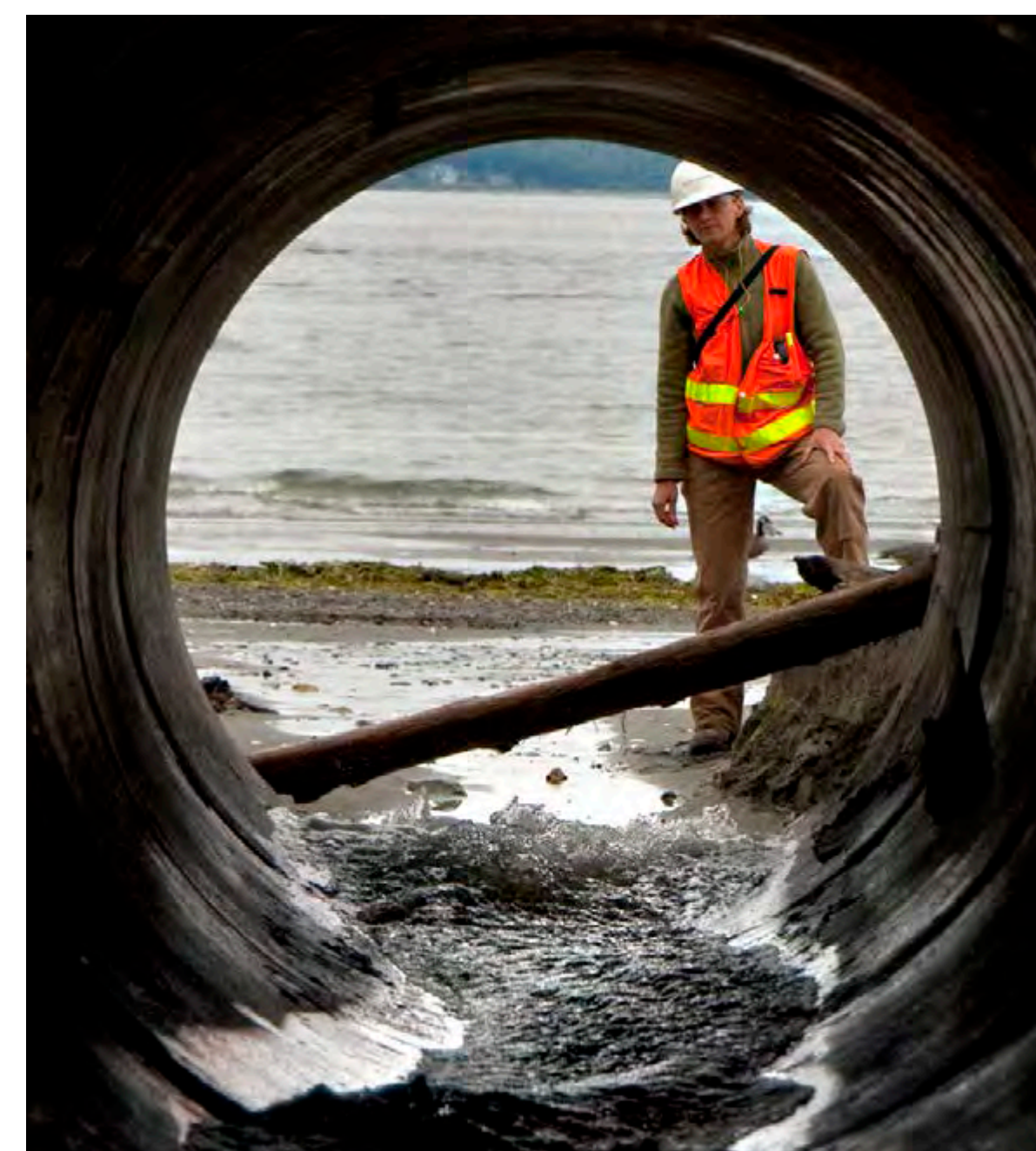
Sustainability measures in South Bellevue:



Stream enhancements near Coal Creek.



Reuse, salvage and recycle construction materials and debris.



Keep water clean by using bio-retention and infiltration drainage solutions.



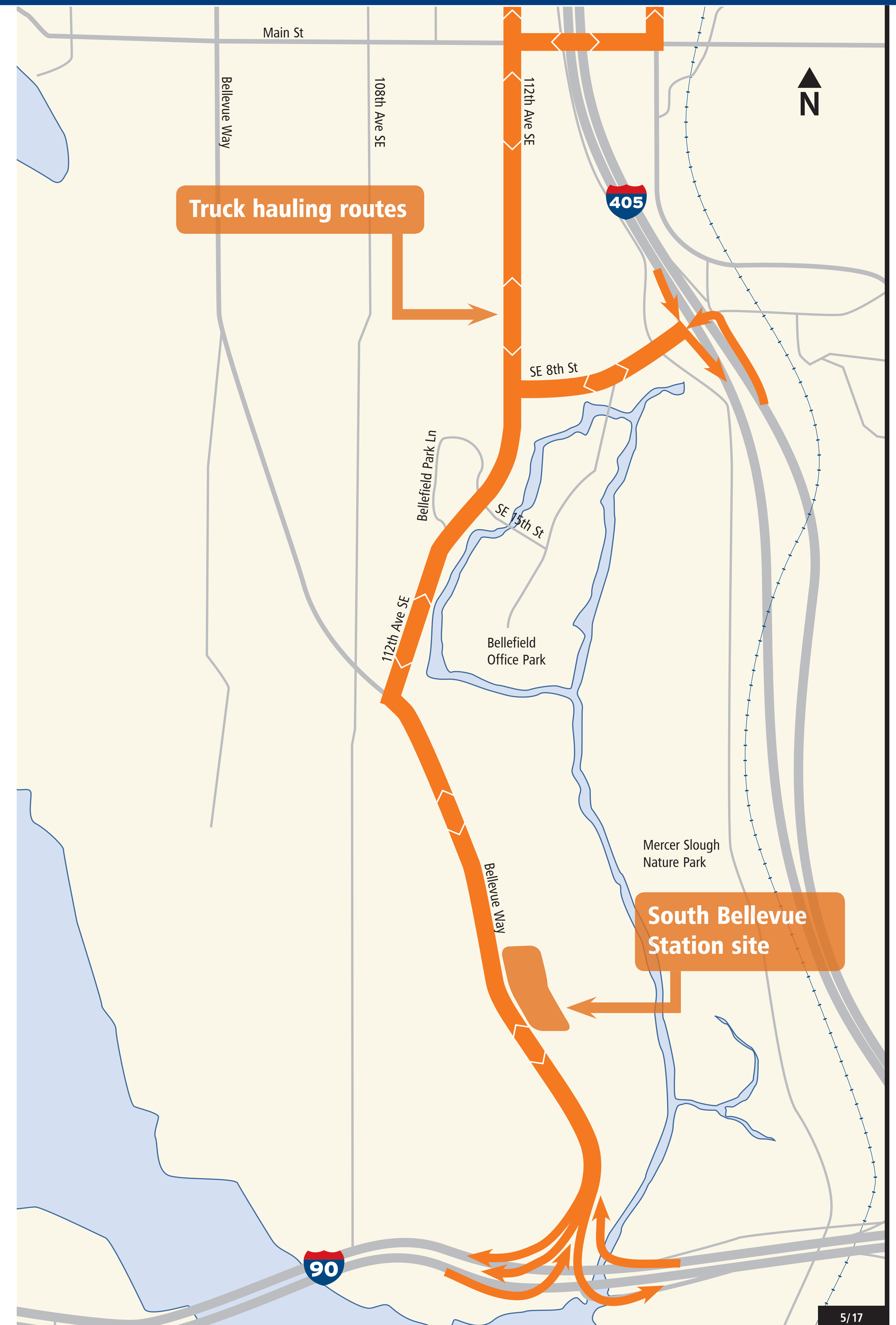
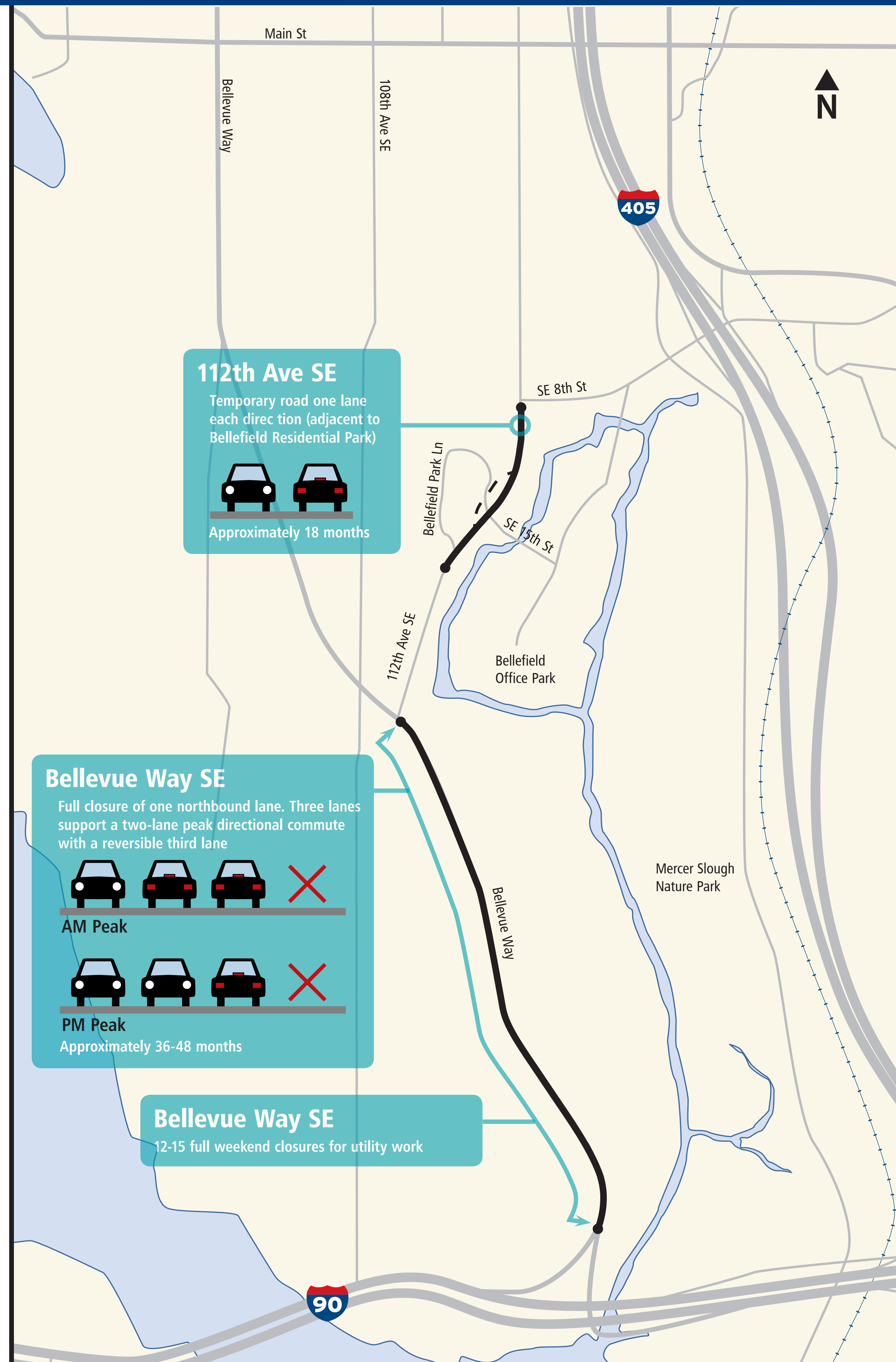
Inventory migratory bird nests to minimize disruption during construction.



Plant and landscaping material salvage.

KEEPING YOU MOVING

EAST LINK EXTENSION



SOUTH BELLEVUE COMMUNITY OUTREACH

EAST LINK EXTENSION

Community Outreach's mission is to represent Sound Transit's interests in the community, and the community's interest in Sound Transit. During construction, it is our job to keep community members informed of major construction activities and project progress. We are your point of contact for Sound Transit's projects.

Good Neighbor Commitments:

- Provide advanced notification of work activities.
- Maintain business and residential access.
- Maintain a clean work site.
- Minimize noise, dust and debris.
- Provide wayfinding and signage.
- 24-hour construction hotline.

Contact us

tel: 206-398-5465

email: eastlink@soundtransit.org

web: soundtransit.org/eastlink

24-hour Construction Hotline:

1-888-298-2395

*For issues that need immediate attention
after normal business hours*

