

Lynnwood Link Extension

Moving forward together

WELCOME
/BIENVENIDO
/ДОБРО ПОЖАЛОВАТЬ
/欢迎
/환영



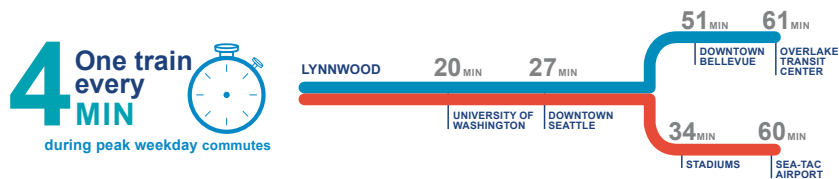
OVERVIEW

The Lynnwood Link Extension is a key part of Sound Transit's mass transit system expansion approved by voters. Targeted for operation in 2024, four new stations and 8.5 miles of light rail will connect north Seattle, Shoreline, Mountlake Terrace and Lynnwood with the entire region.

Schedule



How long will my trip from Lynnwood take?



EACH LINK CAR CAN HOLD...

- 4 bicycles
- 4 wheelchairs
- 200 riders
- Multiple suitcases

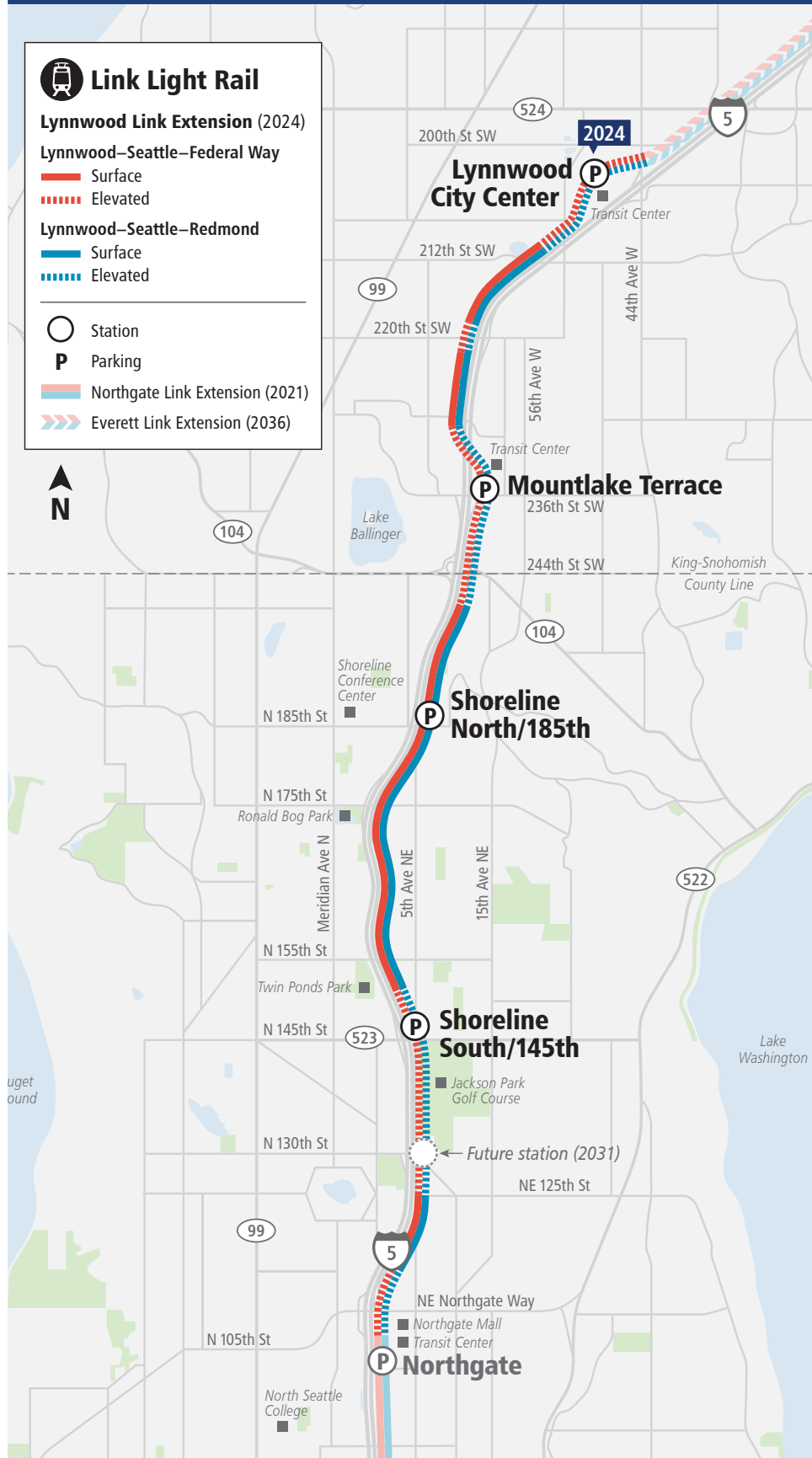


Transit's sustainability helps ensure a tomorrow that is better than today

At Sound Transit, sustainability is about making long-term investments and choices that keep the region's environment, communities and economy healthy. The agency encourages sustainability by providing affordable, environmentally friendly travel options that connect people to where they live, work and play.



PROJECT AREA MAP



SYSTEM EXPANSION

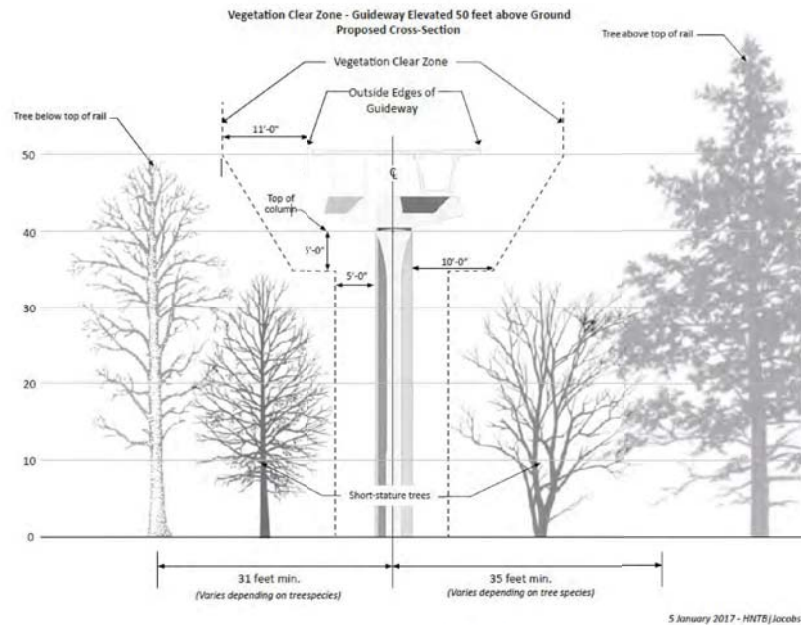
Sound Transit system expansion is:

- Building a 116-mile network extending regional light rail from Tacoma to Everett, and from densely developed Seattle neighborhoods to Redmond and Issaquah, and extending Tacoma Link.
- Establishing Bus Rapid Transit to the north, east and south of Lake Washington.
- Expanding Sounder south line capacity and service, adding two new stations.
- Improving access and expanding parking at Sounder stations.



TREE REMOVAL AND REPLACEMENT

Starting in early 2019, Sound Transit will begin removing trees in areas where track, guideway or other transit infrastructure will be located in order to protect safe and uninterrupted light rail service. Trees could potentially fall onto tracks or disrupt power service.



Sound Transit is committed to replacing trees removed during construction based on replacement requirements in each jurisdiction. Where feasible, agency crews will replant short trees under elevated guideways as depicted in the graphic above.

Crews will plant additional replacement trees around the project corridor. The table below shows the estimated number of trees slated for removal and the number the agency will plant as replacements.

Jurisdiction	Number of trees to be removed (est.)	Proposed plantings (est.)
Seattle	180	900
Shoreline	550	2,800
Mountlake Terrace	270	950
Lynnwood	350	1,200
WSDOT	3,950	14,550

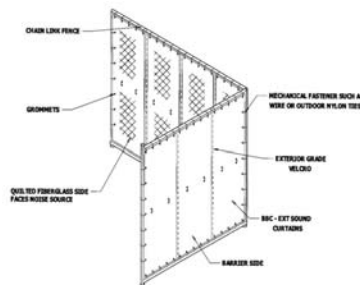
MITIGATING NOISE

Construction of the guideway requires the removal of some existing Interstate-5 noise walls along the corridor; those will be replaced as needed. Crews will also place new walls along the guideway at select locations to mitigate noise from light rail operations and at stations to enhance the patron experience by mitigating noise from I-5.

Temporary Noise Walls

- Temporary removal of existing traffic noise walls during project construction will be required to make room for work activities and equipment mobilization.
- Crews will replace removed I-5 noise walls with new in-kind walls before the end of project construction.
- In the interim, the use of temporary noise barriers, where feasible, will provide partial traffic noise mitigation.
- Specifics regarding locations and duration of temporary noise barriers locations will be available after the development of a detailed construction plan.

Examples of Sound Curtains



CONSTRUCTION



Summer 2018



Selective demolition work

Sound Transit has acquired several properties along the corridor. These properties are needed for construction and transit operation, and have been brought to Sound Transit's attention by their neighbors as potential areas of nuisance now that they are empty. Starting June 2018, we will begin demolishing existing structures and clearing debris.



Fieldwork

This spring, crews have been drilling in the project corridor to locate utilities and evaluate underground soil conditions for future systems that support light rail operation. This fieldwork is nearly complete and helps to pave the way for construction.

Early 2019



Third-party utility relocations

Private utility companies, such as electrical, cable and telecoms, will be moving their infrastructure in advance of construction work in the area. Contact your utility company if you have any questions about service interruptions and planned work.



Sound Transit-led utility relocation

Sound Transit will install and relocate utilities in order to remove infrastructure that may be in the way of upcoming construction, as well as better align service to the future guideway and stations.



Clearing and grading of vegetation

In advance of construction work, Sound Transit contractors will remove vegetation to allow space for construction work, equipment and materials staging, or access to construction areas.

Mid-2019



Active construction begins

In fall 2018, look for specific information about areas of work, construction sequencing and potential impacts. Major construction activities are scheduled to begin in mid-2019. At this time, crews will move large equipment into place, fence in work areas, create detours around active construction sites.

Temporary parking for Mountlake Terrace Transit Center during construction

Sound Transit will install temporary parking spaces near the Mountlake Terrace Transit Center during construction of the light rail station in compliance with the city's Comprehensive Plan.



Ongoing collaborative efforts from the city and its partners took the project through a rigorous evaluation of multiple potential sites to identify viable replacement parking. We are moving forward to acquire property at 59th Place West (just east of the transit center) for construction of a temporary replacement parking lot and bus loop.

Access Enhancement Improvements in Mountlake Terrace

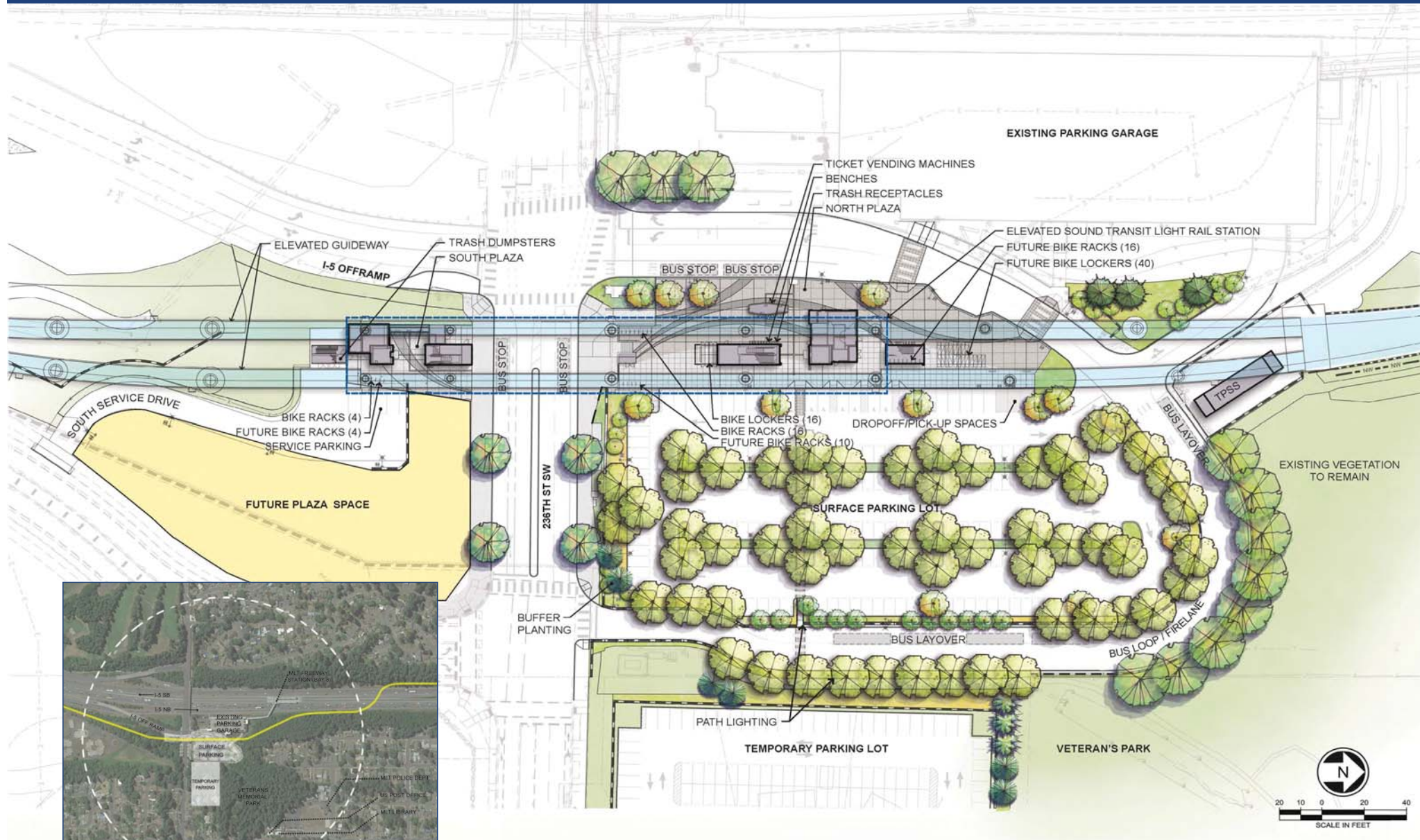
Sound Transit worked with the city of Mountlake Terrace on designs for a new pedestrian plaza to connect the Mountlake Terrace Light Rail Station's south plaza to a future new development, Terrace Station. The plaza will improve access for riders coming to and from Terrace Station and crossing 236th Street SW.



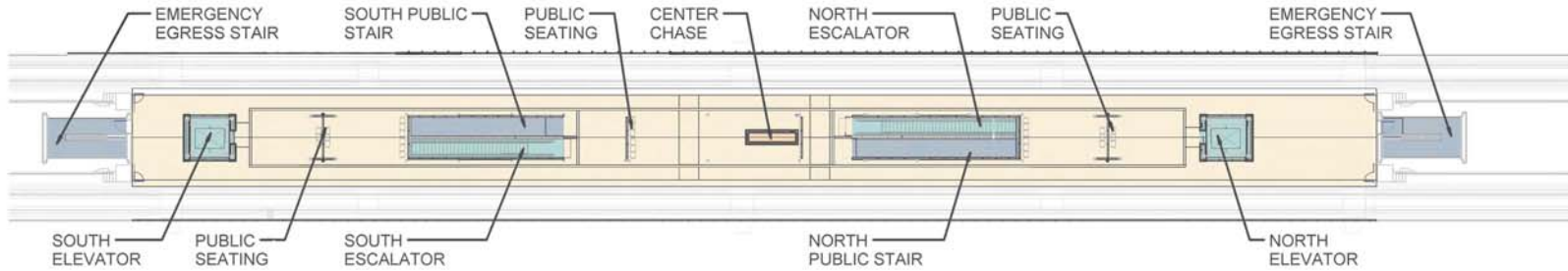
MOUNTLAKE TERRACE STATION AERIAL VIEW



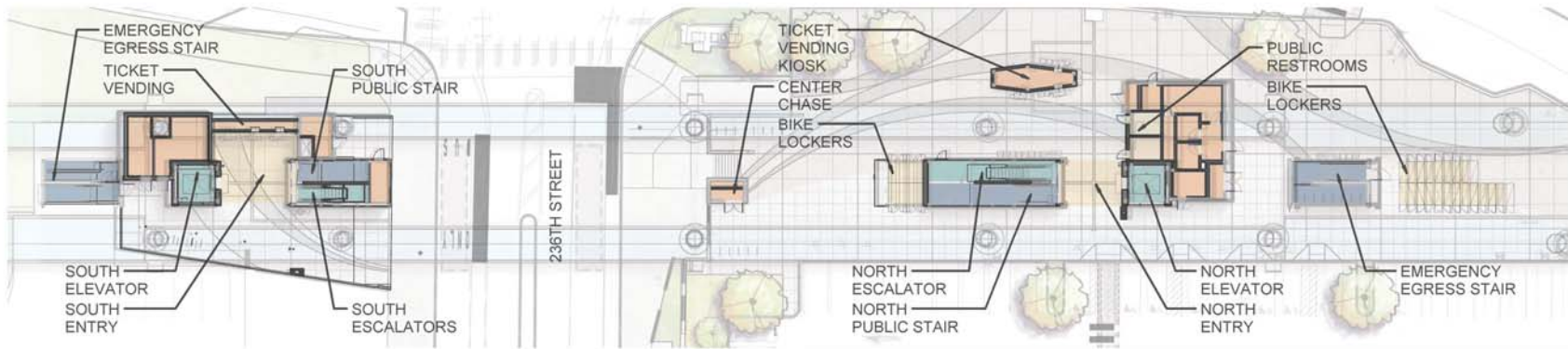
MOUNTLAKE TERRACE STATION SITE PLAN



MOUNTLAKE TERRACE STATION FLOORPLAN



PLATFORM LEVEL

**PLAZA LEVEL**

ANCILLARY LEVEL



MOUNTLAKE TERRACE STATION



View from I-5 northbound off-ramp at 236th Street SW



View from 236th Street SW looking west at south lobby

MOUNTLAKE TERRACE STATION



View looking north below guideway at existing garage entry



View of platform

MOUNTLAKE TERRACE STATION



View of north lobby



View of south lobby

STATION ARTWORK

KIPP KOBAYASHI



Artist Kipp Kobayashi is working to wrap the walls and ceiling of the Mountlake Terrace Station entrance structures with a photographic image of the forest, emphasizing tree roots as a metaphor for the connections and intersections that are at the heart of the light rail development project. Kobayashi's inspiration comes from the time he's spent in Mountlake Terrace and the stories he's heard from residents about the value they place on their urban forest and the strength of their community connections. Kobayashi's artwork will be rendered in the form of perforations in metal panels. The exact materials and methods for achieving this have not yet been finalized.

About his work, Kobayashi writes, "I am an environmental designer and artist focused on the creation of public places. My work explores the human dynamics that occur within these spaces and how they merge with the physical characteristics of the specific environment, transforming them into living entities composed of our collective thoughts, actions and experiences. By focusing on these intersections of human, cultural and natural factors, I aim to reflect what is at first not apparent; hoping that by revealing those elements, one will forever see and use a particular place or thing in a new and different way."

ARTWORK PROPOSAL (IN DEVELOPMENT)



NEIGHBORHOOD INSPIRATION

