



Lynnwood Link Extension Mountlake Terrace Open House

Presentation Overview

- Introductions
- Project description and schedule
- Construction preview
- Station design & updates
- Open house guide





Current Service and Approved Projects

Near term Link extensions:

- University of Washington – Northgate (2021)
- Northgate – Lynnwood (2024)
- Downtown Seattle – Overlake (2023)
- Angle Lake – Kent/Des Moines (2024)
- Tacoma Theater District – S 19th

Additional extensions shown were passed in Sound Transit 3.



Lynnwood Link Extension

- 8.5 mile extension - Northgate to Lynnwood City Center
- 4 stations:
 - **Shoreline South/145th** — elevated
 - **Shoreline North/185th** — at grade
 - **Mountlake Terrace** — elevated
 - **Lynnwood City Center** — elevated

Project Schedule



Construction Preview

Summer 2018:

- Selective demolition
- Fieldwork

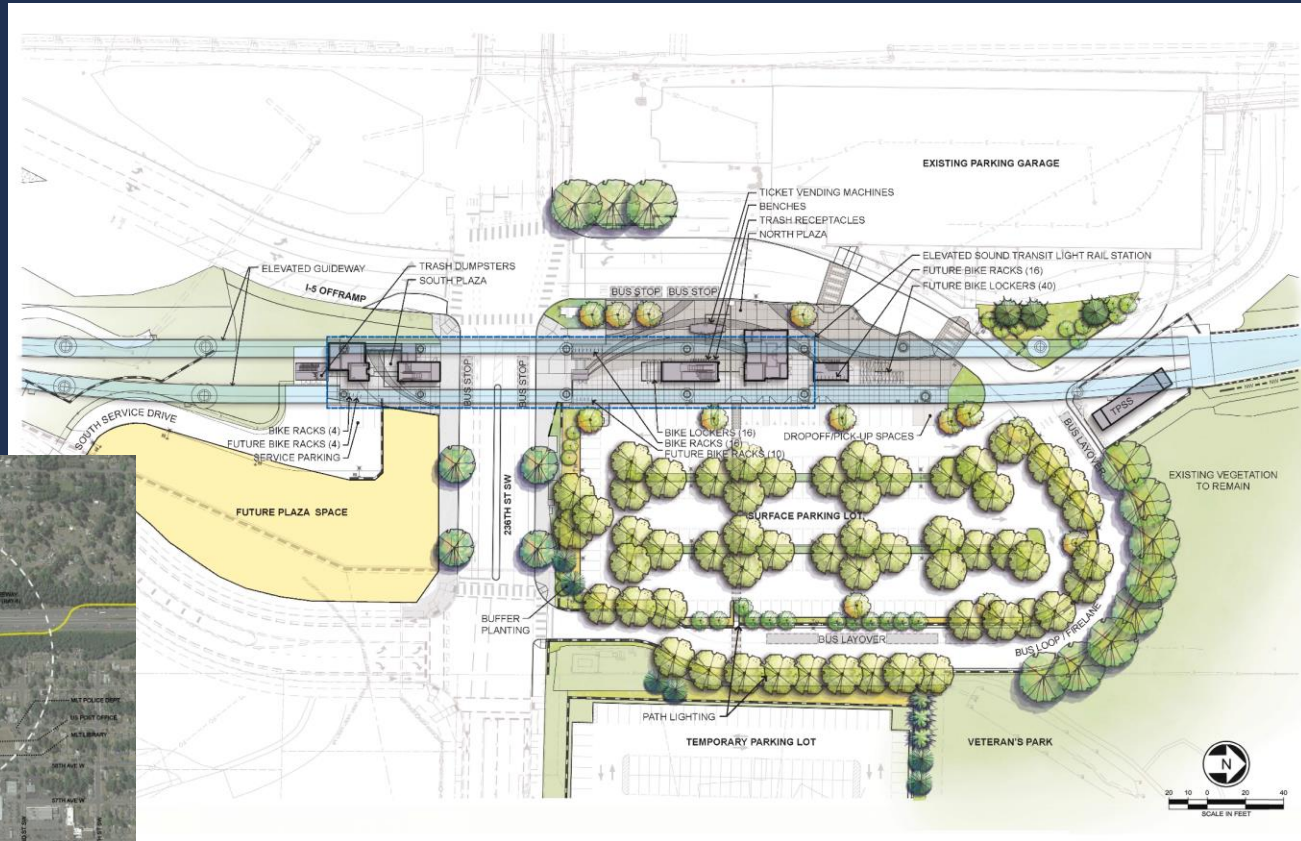
Construction anticipated in early 2019

- Early 2019
 - Utility relocations
 - Clearing and grading
- Mid-2019:
 - Active construction begins

Service begins 2024



Mountlake Terrace Station



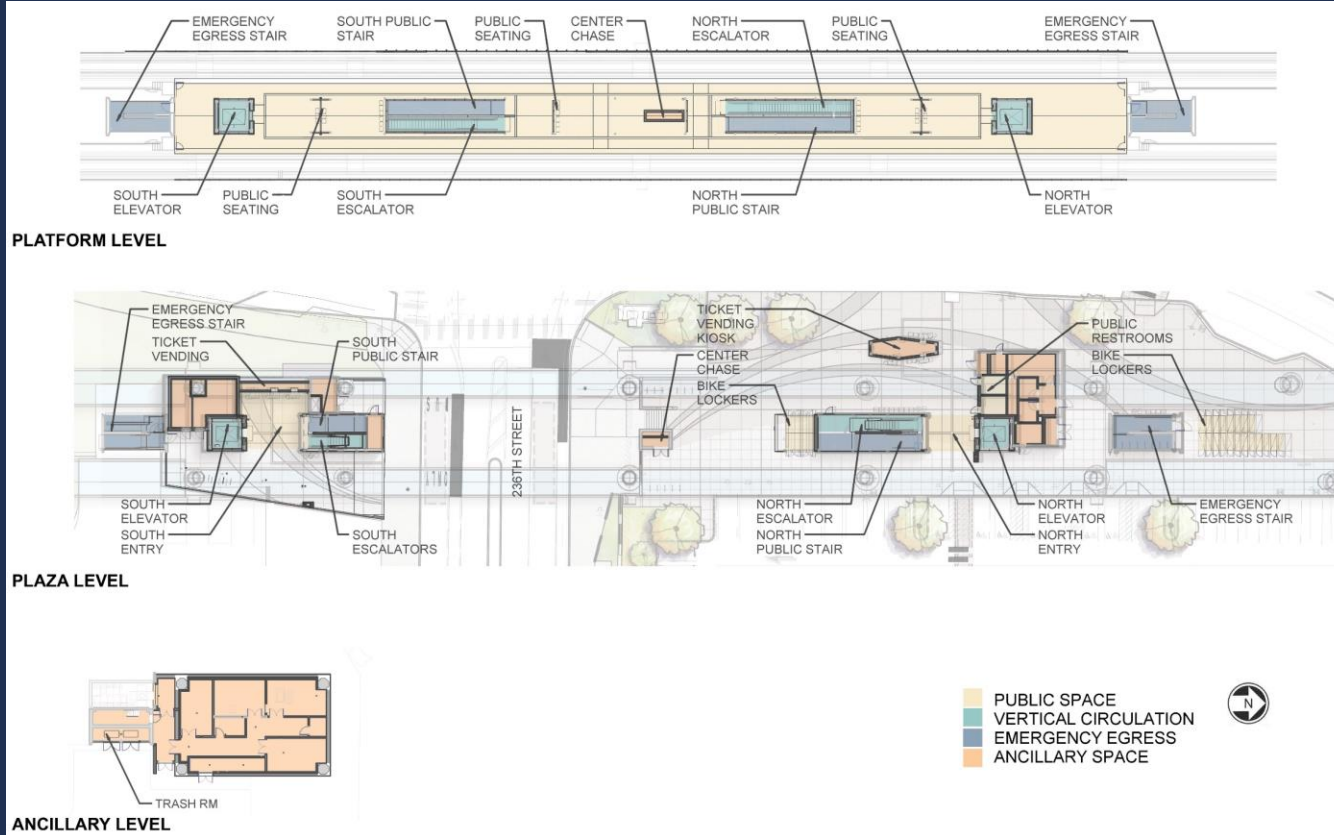
Vicinity Map and Site Plan

Mountlake Terrace Station



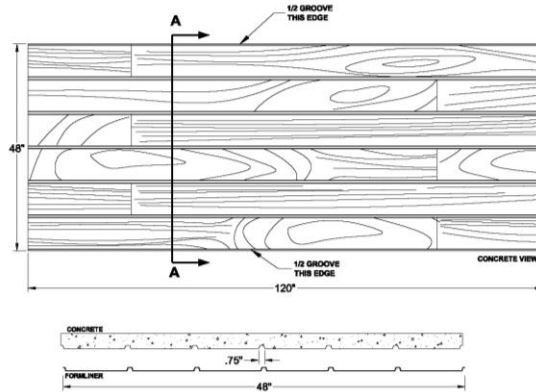
Temporary Parking

Mountlake Terrace Station



Floor Plan

Mountlake Terrace Station



Materials

Mountlake Terrace Station



Aerial View

Mountlake Terrace Station



I-5 Off-Ramp View

Mountlake Terrace Station



North Entry View

Mountlake Terrace Station



South Entry View

Mountlake Terrace Station



South Lobby View

Mountlake Terrace Station



Platform View

Station Artist: Kipp Kobayashi

- **Title:** Untitled perforated metal mural (title TBD)
- **Themes:** Connections, living in the urban forest
- **Intent:** Celebrating sustainable development and the history of the neighborhood's wetlands



Open House guide



Shoreline Open House: 6/27/2018
Shorewood High School

Lynnwood Open House: 7/25/2018
Lynnwood Convention Center

Online Open House:
LynnwoodLink.Participate.Online



Thanks!
soundtransit.org/LLE

