

DESIGN AND CONSTRUCTION OPEN HOUSE

OPERATIONS AND MAINTENANCE FACILITY: EAST

The purpose of tonight's meeting is to provide:

- Design concepts of the new Operations and Maintenance Facility in Bellevue.
- Early concepts of potential transit-oriented development opportunities.
- Project schedule and what to expect during early activities.
- How to stay informed and involved.
- East Link construction updates.



Agenda

5:30 p.m. Open House

Meet with project staff and view display boards and graphics featuring information about design concepts.

6:00 p.m. Presentation

7:30 p.m. Open House adjourns

Other information:

- East Link
- Eastside Rail Corridor Trail
- City of Bellevue Bel-Red Plan
- Light rail vehicle fleet expansion

JUNE 2017

PROJECT MAP

OPERATIONS AND MAINTENANCE FACILITY: EAST

Operations & Maintenance Facility: East

Project Snapshot

- Baselined: July 2016
- Budget: \$449.2 million (YOE)
- Schedule: Construction complete Dec. 2020

Map Key

- Station
- Ⓟ Park & Ride
- East Link Alignment



JUNE 2017

OVERALL SCHEDULE SUMMARY

OPERATIONS AND MAINTENANCE FACILITY: EAST



JUNE 2017

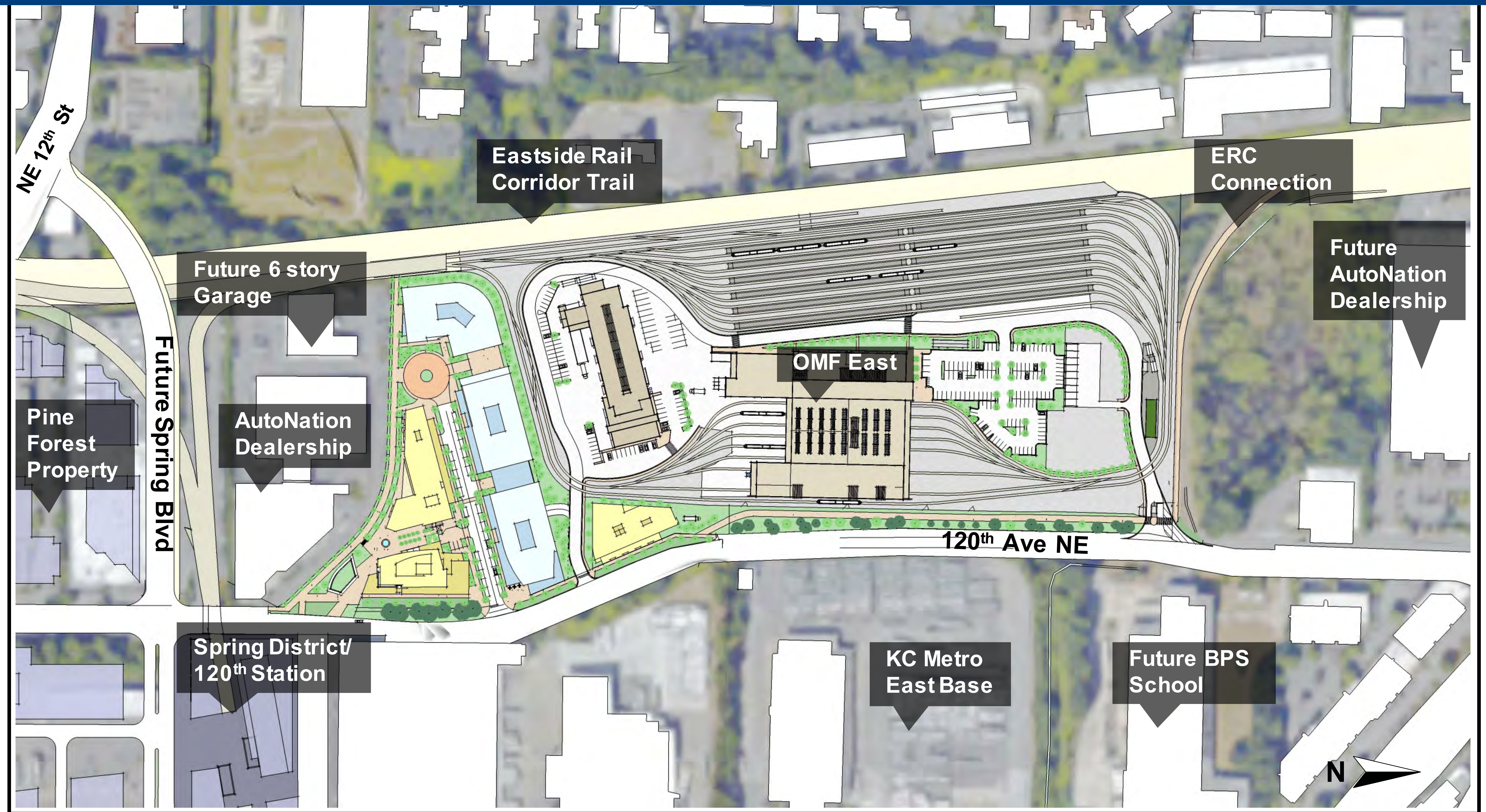
EXTENDING THE SPRING DISTRICT VISION

OPERATIONS AND MAINTENANCE FACILITY: EAST



PROJECT CONTEXT & PROPOSED SITE PLAN

OPERATIONS AND MAINTENANCE FACILITY: EAST



JUNE 2017

PROGRAM HIGHLIGHTS

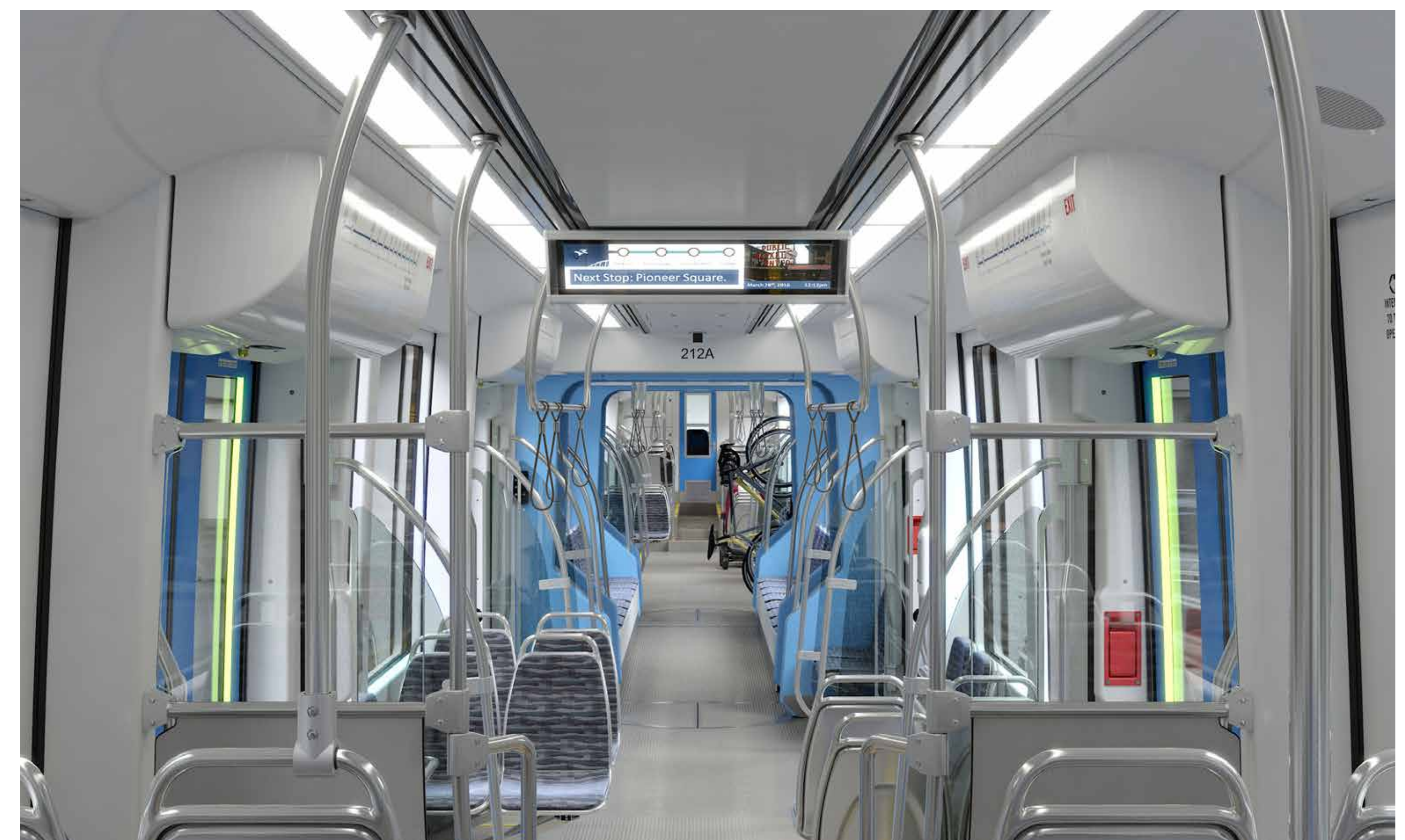
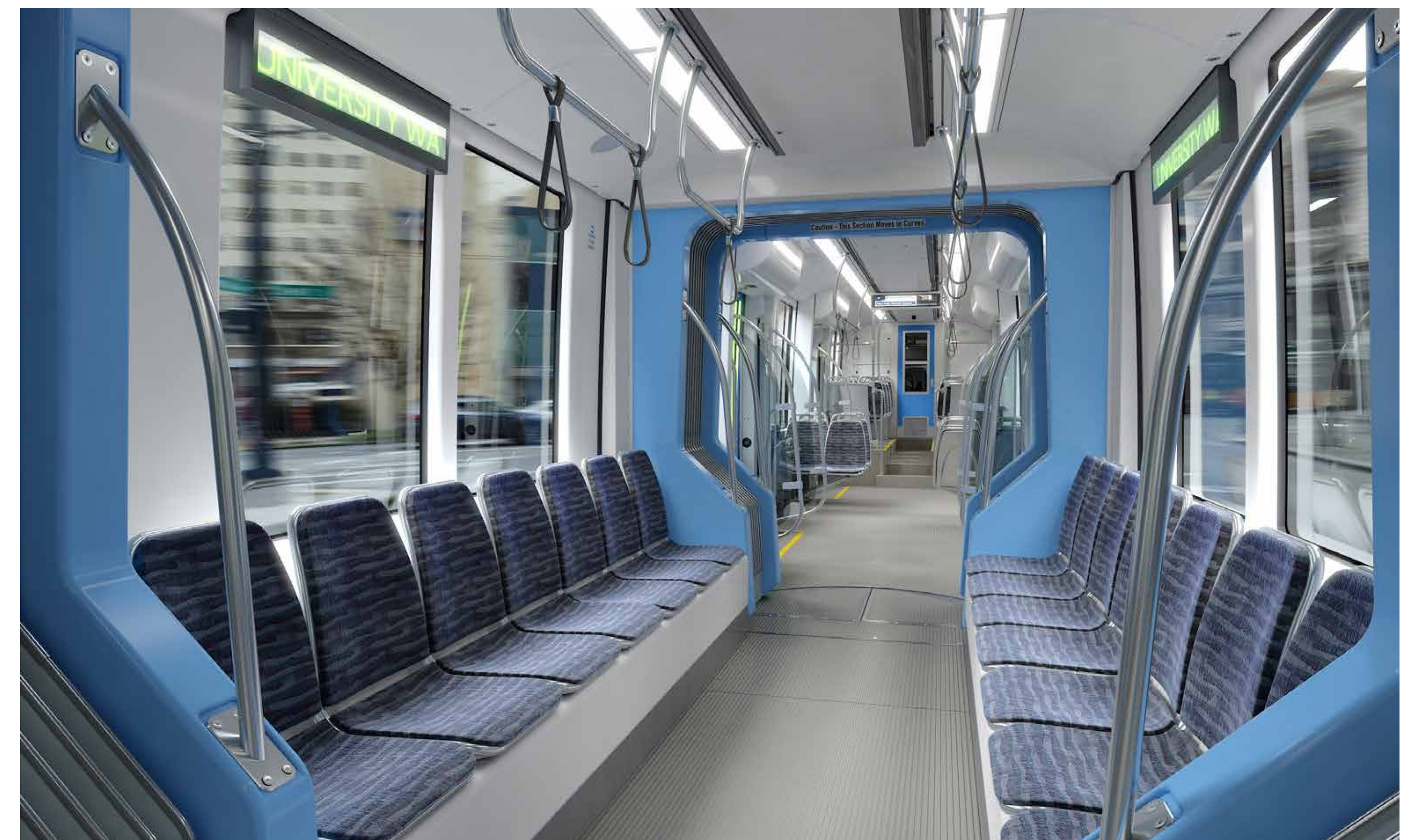
OPERATIONS AND MAINTENANCE FACILITY: EAST



- Facility to service, deploy and store 96 LRVs.
- Vehicle maintenance shop with 14 service bays.
- Mainline track, systems & station maintenance functions (Maintenance of Way).
- LRV parts storage and car wash.
- Administrative and locker room facilities to support ~250 full-time employees.
- Equipment and furnishings.
- A LEED Silver minimum certification.
- 24/7, 365 day operations.
- New vehicles begin arriving to the OMF in Seattle during 2019 in 2019.
- The existing OMF reaches capacity during 2020.
- Bike trail connections along the Eastside Rail Corridor to Wilburton Station and along 120th Ave NE.

JUNE 2017

LIGHT RAIL VEHICLE FLEET EXPANSION



JUNE 2017

DESIGN CONCEPTS

OPERATIONS AND MAINTENANCE FACILITY: EAST



Aerial View Looking Northwest



Main facility entrance

DESIGN CONCEPTS

OPERATIONS AND MAINTENANCE FACILITY: EAST



View south along 120th Ave NE interim multi-use trail

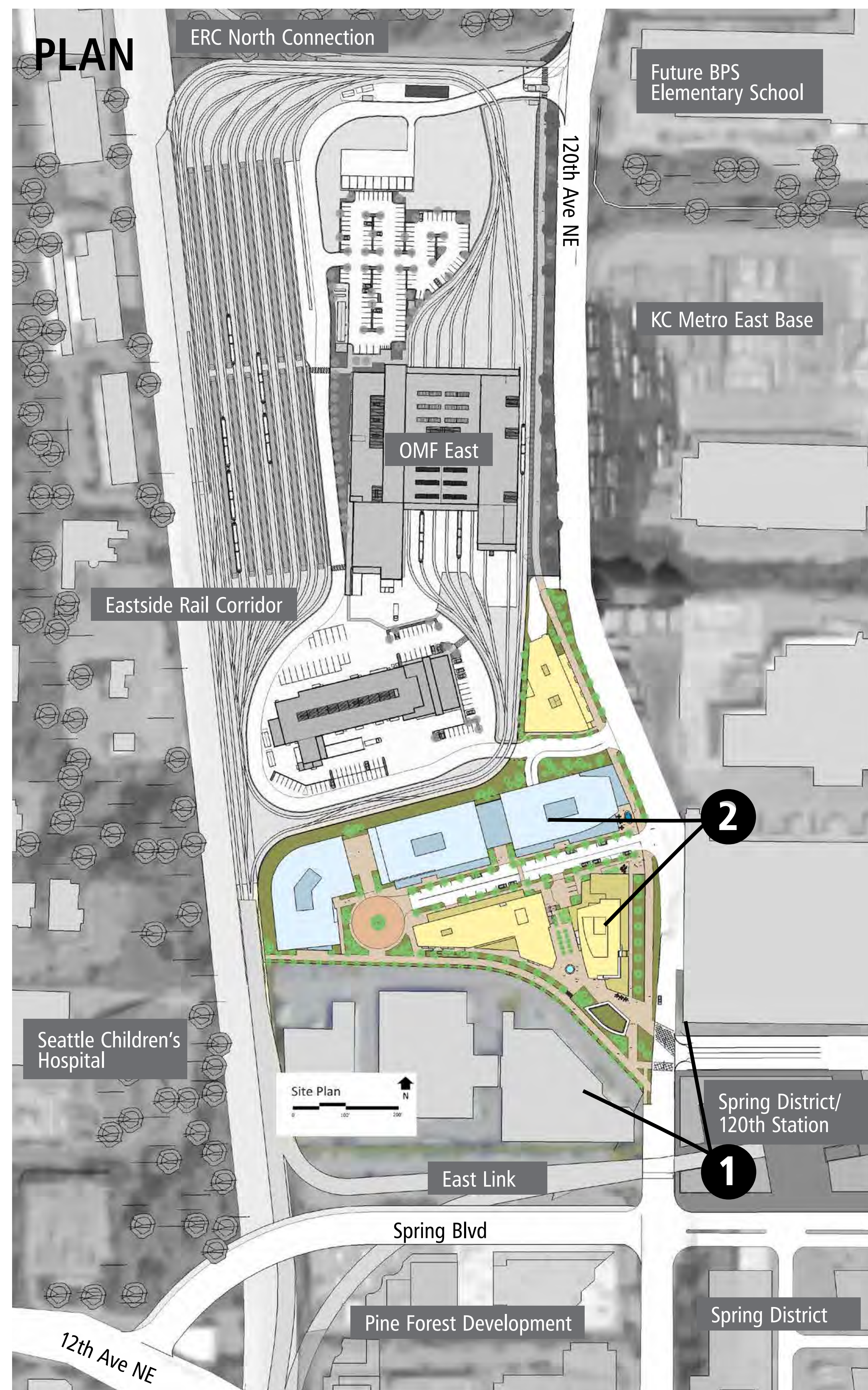


View looking south along eastside rail corridor (art opportunity for fence)

JUNE 2017

TOD IN OMF EAST MASTER DEVELOPMENT PLAN

OPERATIONS AND MAINTENANCE FACILITY: EAST



Zoning:

BR-OR-2, mixed-use

Size: (anticipated)

282,715 SF (6.5 acres)

Development capacity:

1.0 – 1.2 million GSF

Development Parameters from Implementation Agreement:

Min 20% Residential

Min 50,000 SF

Project milestones:

2017: MDP submittal/approval

2018-2019: RFP for TOD developer

2021-2023: Potential construction

JUNE 2017

PERIMETER SCREENING ARTWORK ALONG EASTSIDE RAIL CORRIDOR

OPERATIONS AND MAINTENANCE FACILITY: EAST



ARIL, OREGON HEALTH AND SCIENCE UNIVERSITY, PORTLAND, OREGON, 2014



ECLIPSE, EDMONTON, ALBERTA, CANADA, 2015

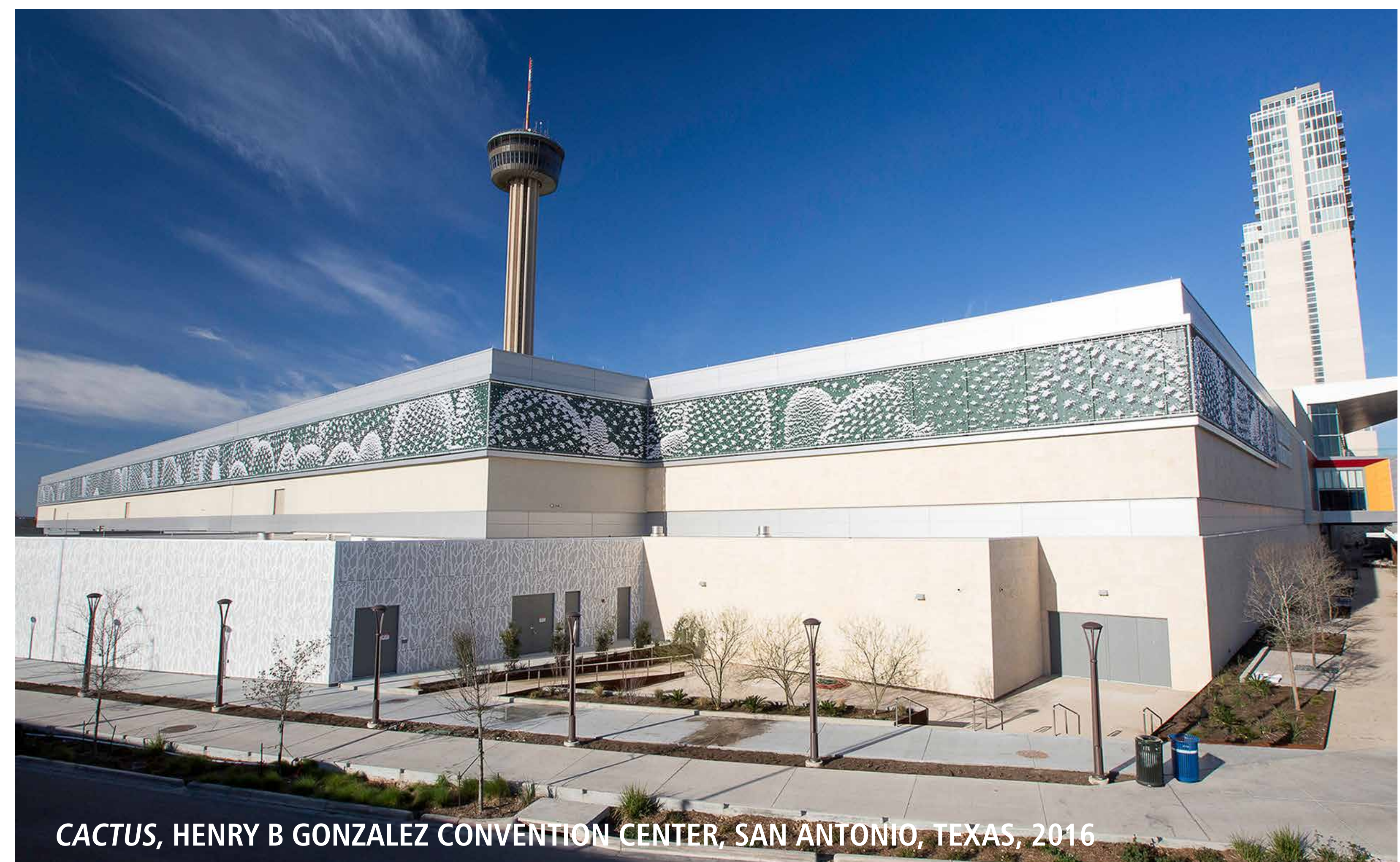
ABOUT THE ARTIST: CHRISTIAN MOELLER

"I came to the arts from architecture, with a strong interest in the spatial qualities of two and three dimensional works and their integration into public space. My first work of public art was also a perimeter screening project, titled "News Readers." Located in Seattle and with a modest budget, it marked for me the beginning of the unexpected professional success I have been able to achieve as a relative newcomer to public art in the US. In the light of great memories I have of that wonderful work experience on the other side of Lake Washington, I am excited to make a major work in Bellevue.

Originally a practicing artist and teacher in Germany, Moeller is now faculty in the department of Design Media Arts at UCLA and operates his studio in the Silverlake neighborhood of Los Angeles, California. His large scale site specific works interrogate and explore the synergies between architecture and sound, technology and moving image. He works with contemporary media technologies to produce innovative and intense physical events, realized from hand held objects to architectural scale installations.



QUILL, SAN JOSE INTERNATIONAL AIRPORT, SAN JOSE, CALIFORNIA, 2014



CACTUS, HENRY B GONZALEZ CONVENTION CENTER, SAN ANTONIO, TEXAS, 2016