



East Link Extension

Redmond stations Open House
November 17, 2016

Presentation agenda

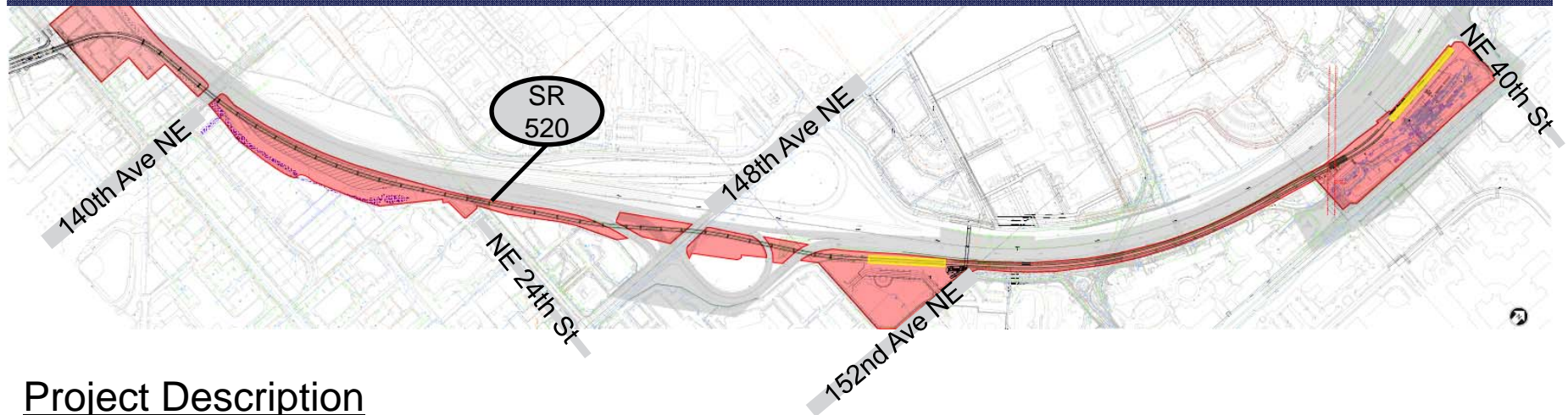
- Overview of East Link Extension light rail project and two stations in Redmond's Overlake area
 - Overlake Village Station design
 - Redmond Technology Center Station design
 - Parking
 - Overlake Transit Center Park-and-Ride closure
 - Construction timeline

East Link Extension

- Length: 14-mile light rail extension
- Stations: 10 stations
- Open for service: Targeted 2023
- Rider projection: About 50,000 daily riders by 2030



East Link in Redmond



Project Description

- 1.8 miles elevated and at-grade double track guideway
- Two stations: Overlake Village Station and Redmond Technology Center Station
- Park-and-ride garage at Redmond Technology Center Station
- Bicycle and pedestrian bridges connecting across SR 520
- Potential for future development
- Secured bicycle parking

Coming in 2023

- Redmond Technology Center Station to Sea-Tac Airport in about one hour
- 5,000 daily passengers coming and going from Redmond Technology Center Station (by 2035), 1,700 coming and going from Overlake Village Station
- Park-and-ride facility with 320 spaces at the Redmond Technology Center station (1400 spaces to be available at SE Redmond Station in 2024)





Overlake Village Station design
Andrew Engel, **Kiewit-Hoffman: East Link Constructors**

Overlake Village Station area

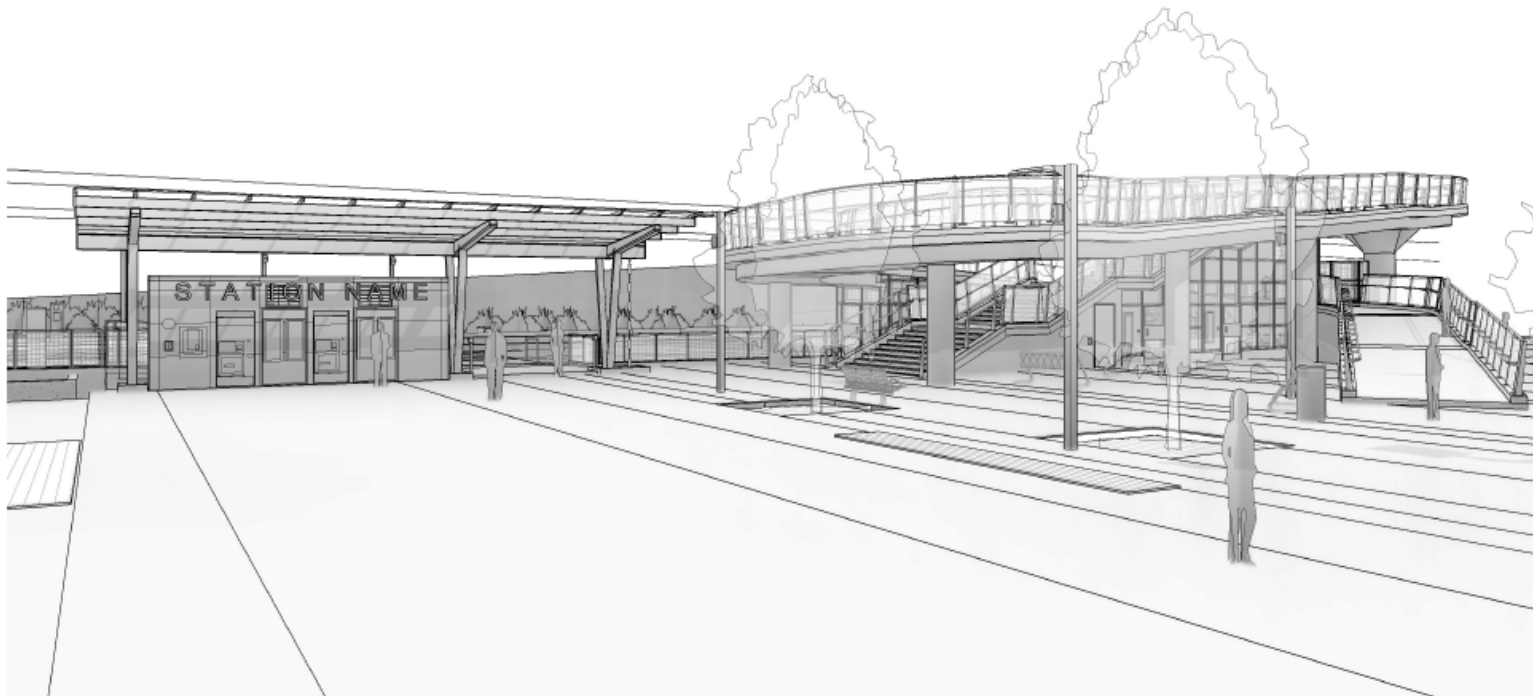


- BUS ROUTE
- BICYCLE ROUTE
- PEDESTRIAN-BICYCLE BRIDGE
- LIGHT RAIL TRACKS
- STATION

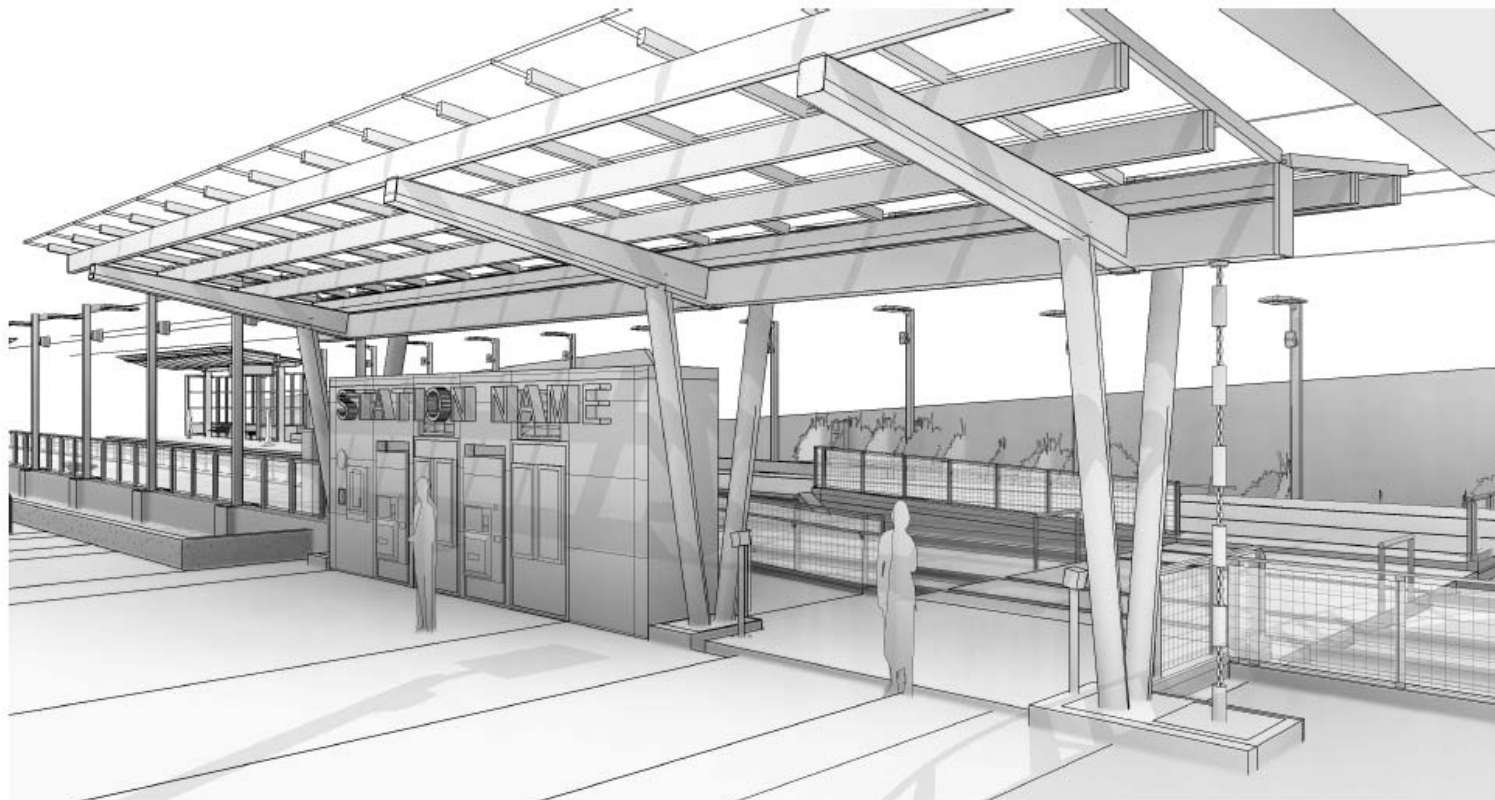
Overlake Village Station



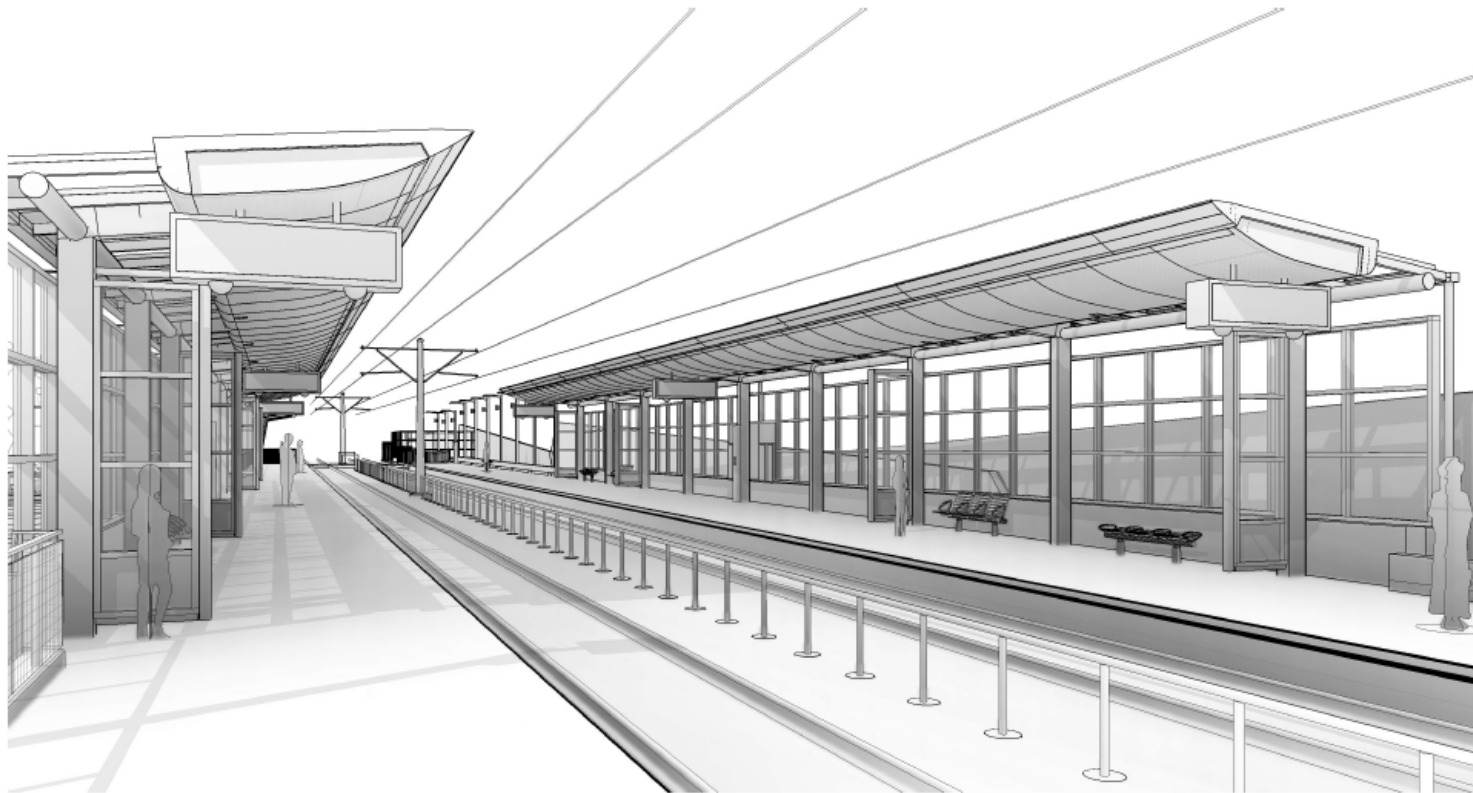
Overlake Village Station (View from plaza looking north)



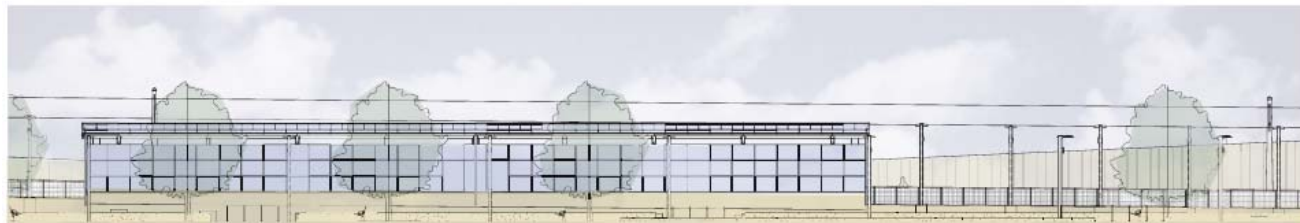
Overlake Village Station (Looking southwest)



Overlake Village Station (Looking southwest)



Overlake Village Station



Conceptual Building Elevations

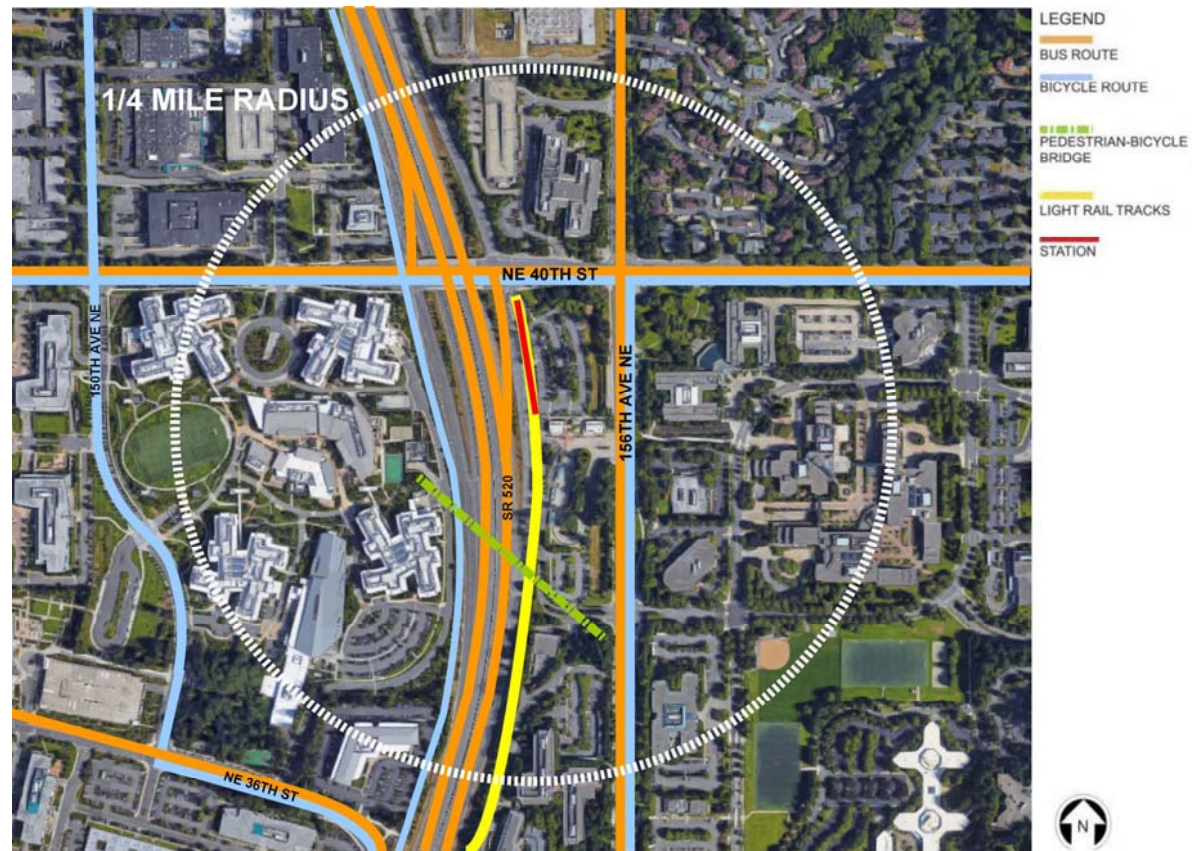
Overlake Village Station bicycle and pedestrian bridge concept



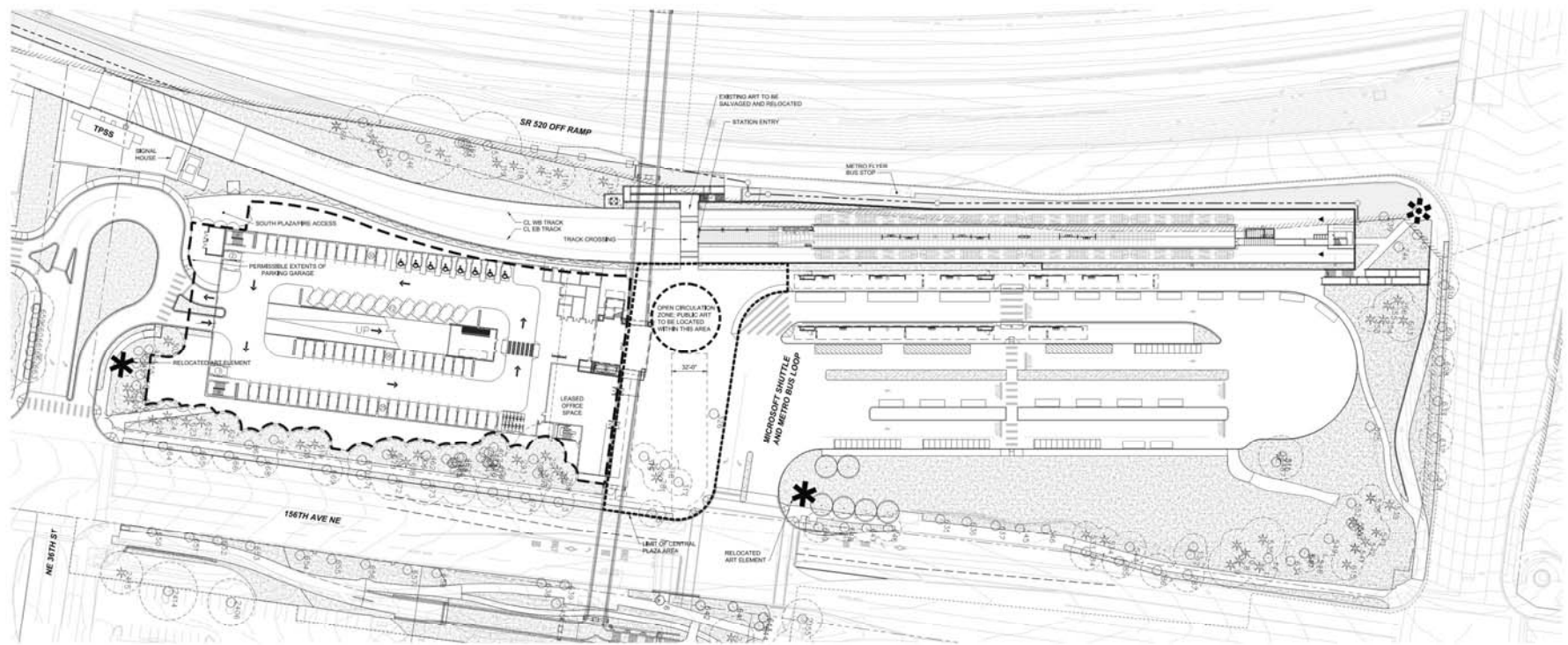


Redmond Technology Center Station design
Leah Ephrem, **Kiewit-Hoffman: East Link Constructors**

Redmond Technology Center Station area

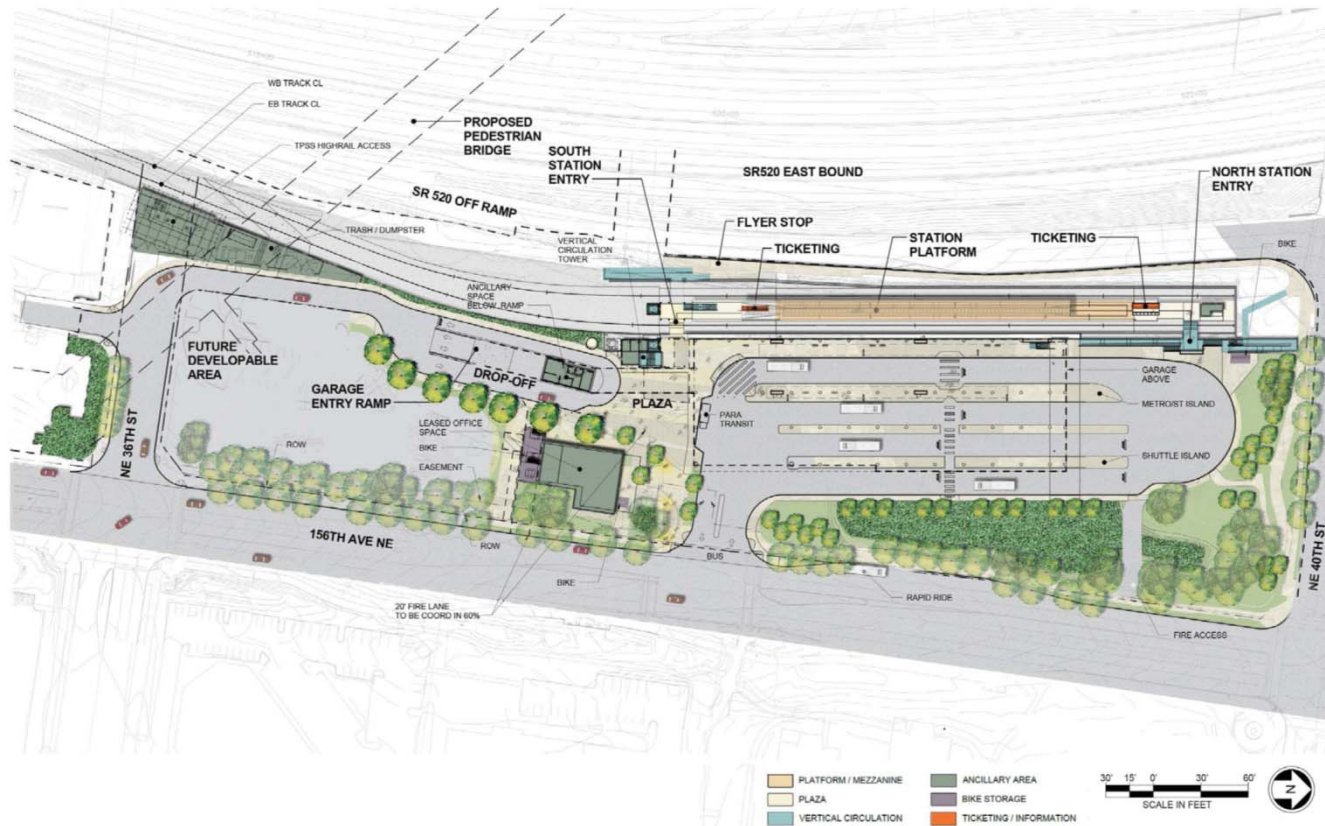


Proposed 2013 site plan

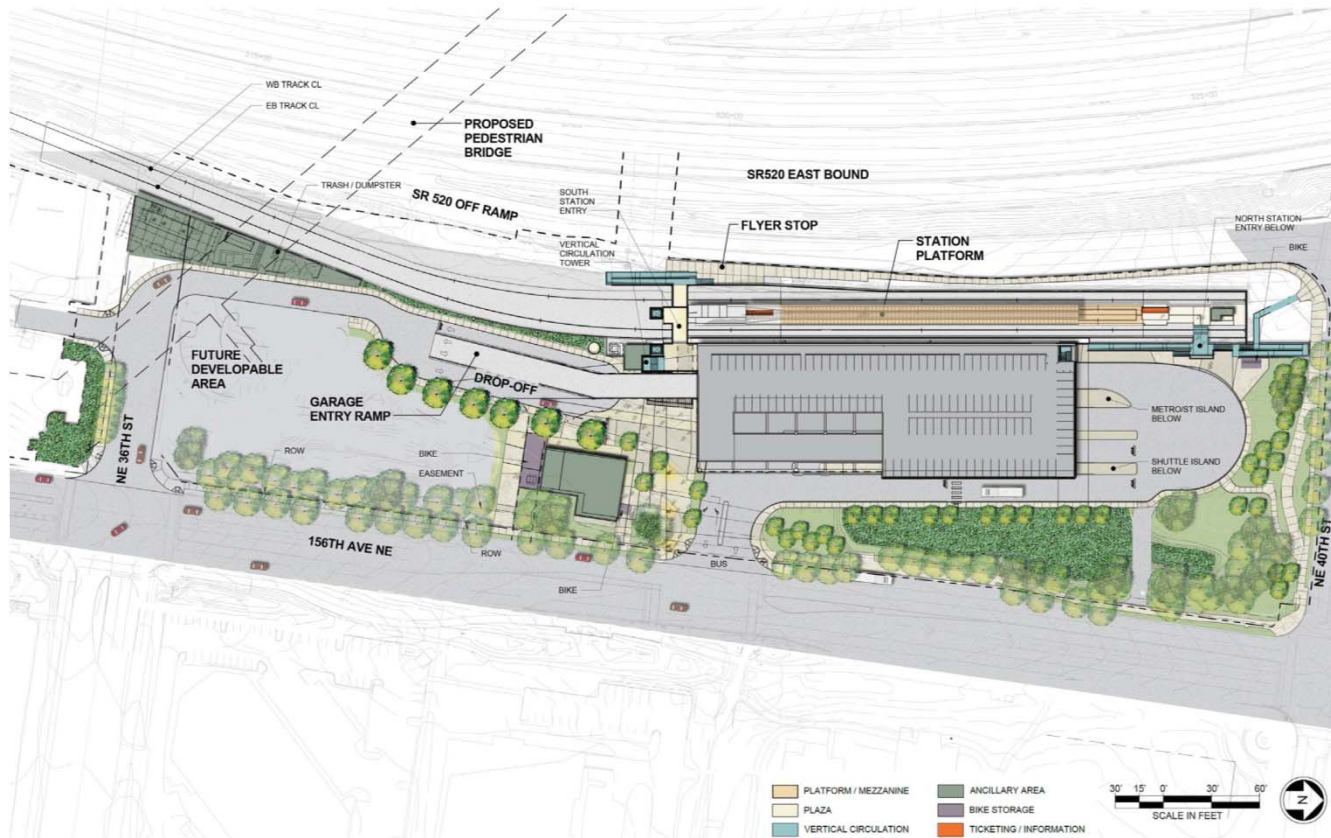


RFP SITE PLAN - PLAZA LEVEL

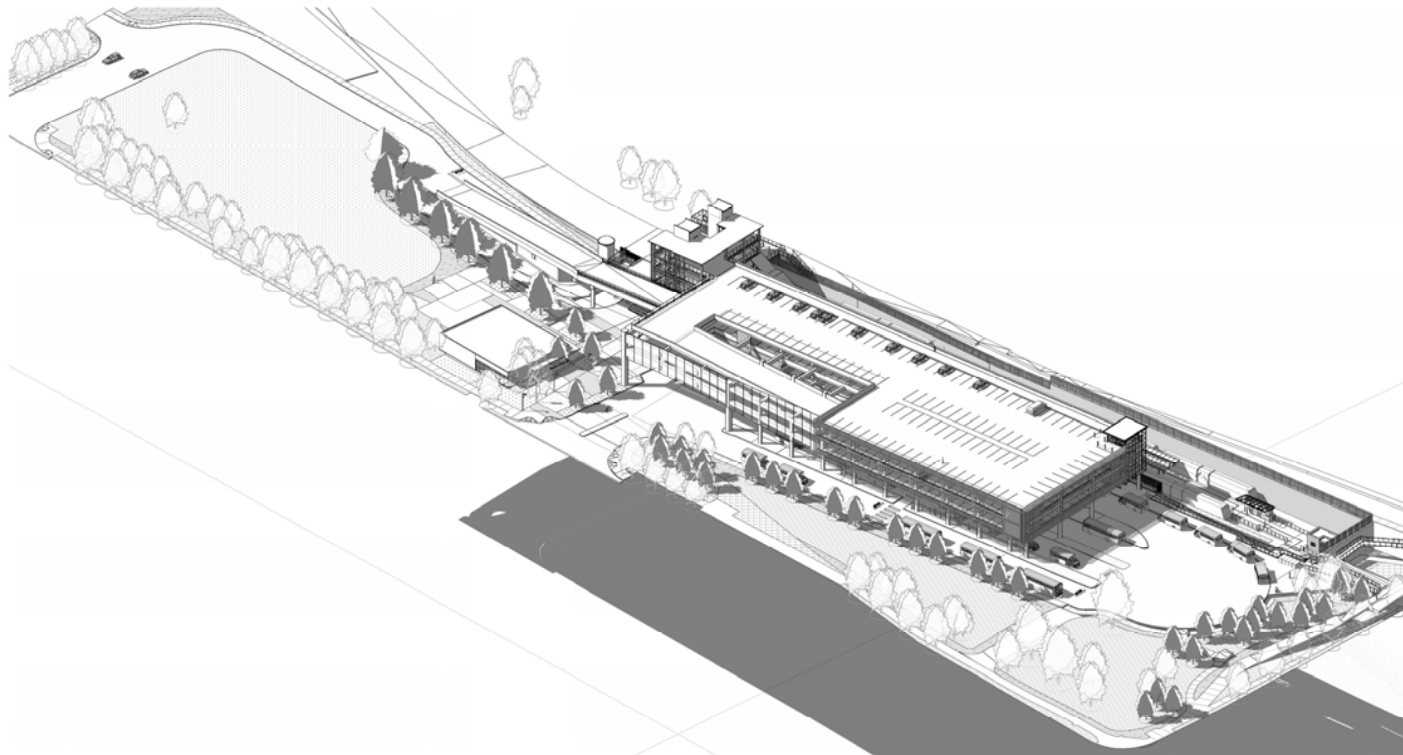
Redmond Technology Center Station



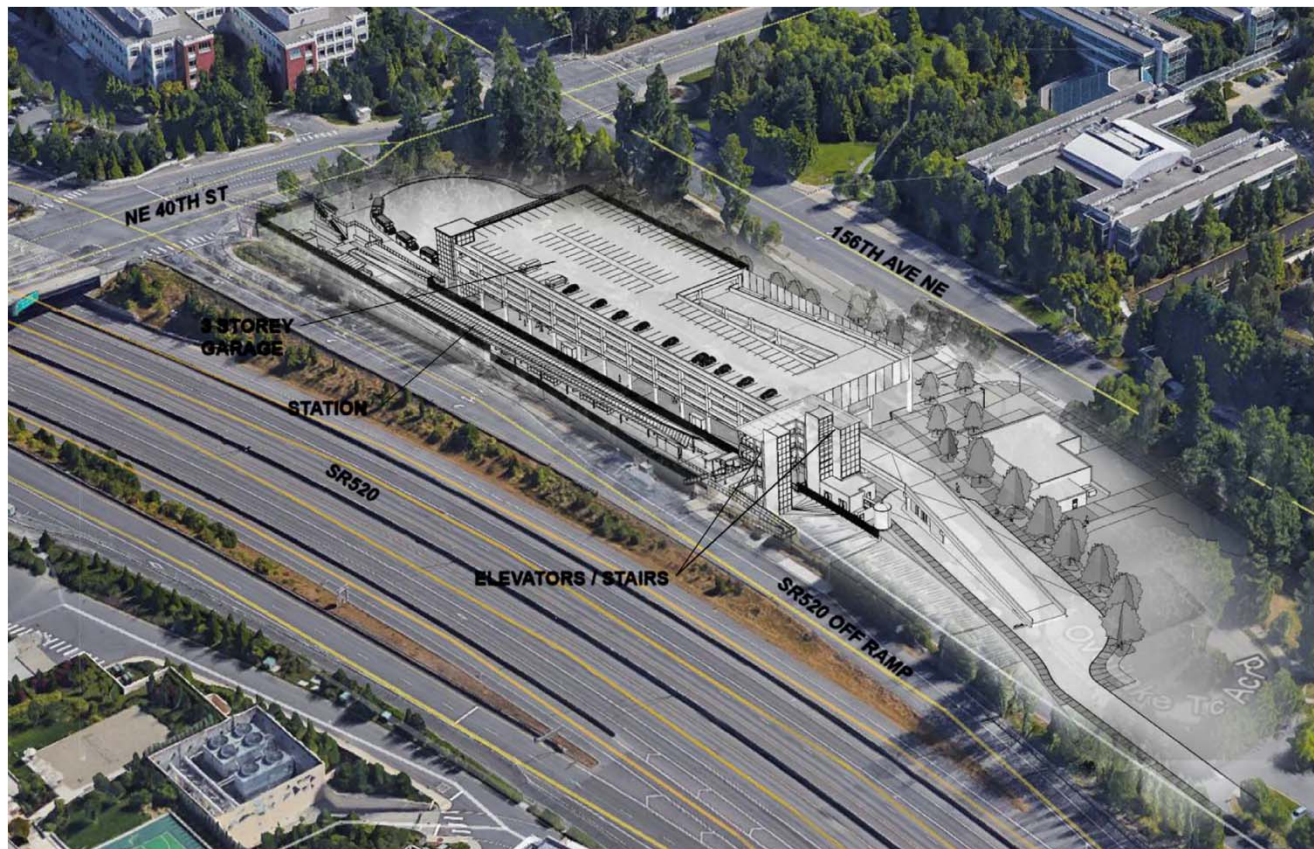
Redmond Technology Center Station



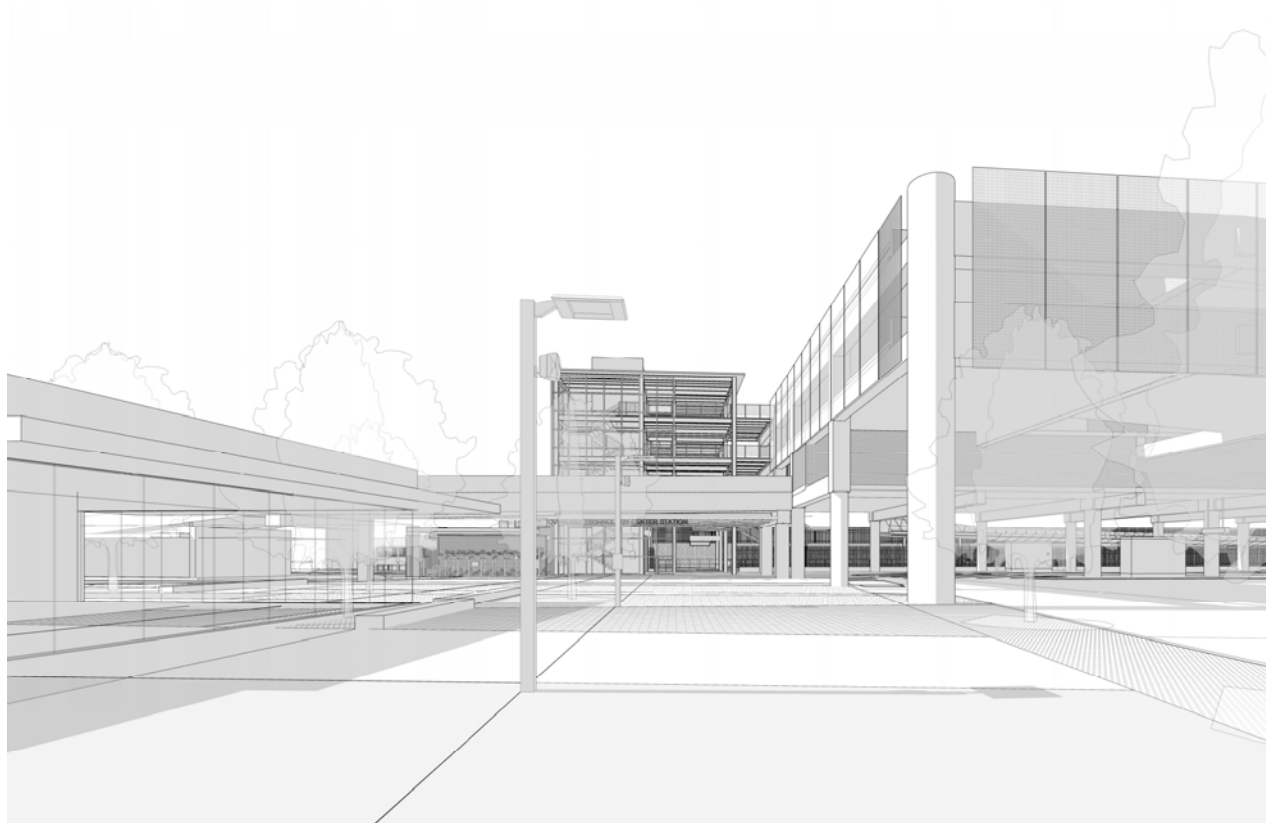
Redmond Technology Center Station – Looking southwest



Redmond Technology Center Station



Redmond Technology Center Station – View from NE 156th Street



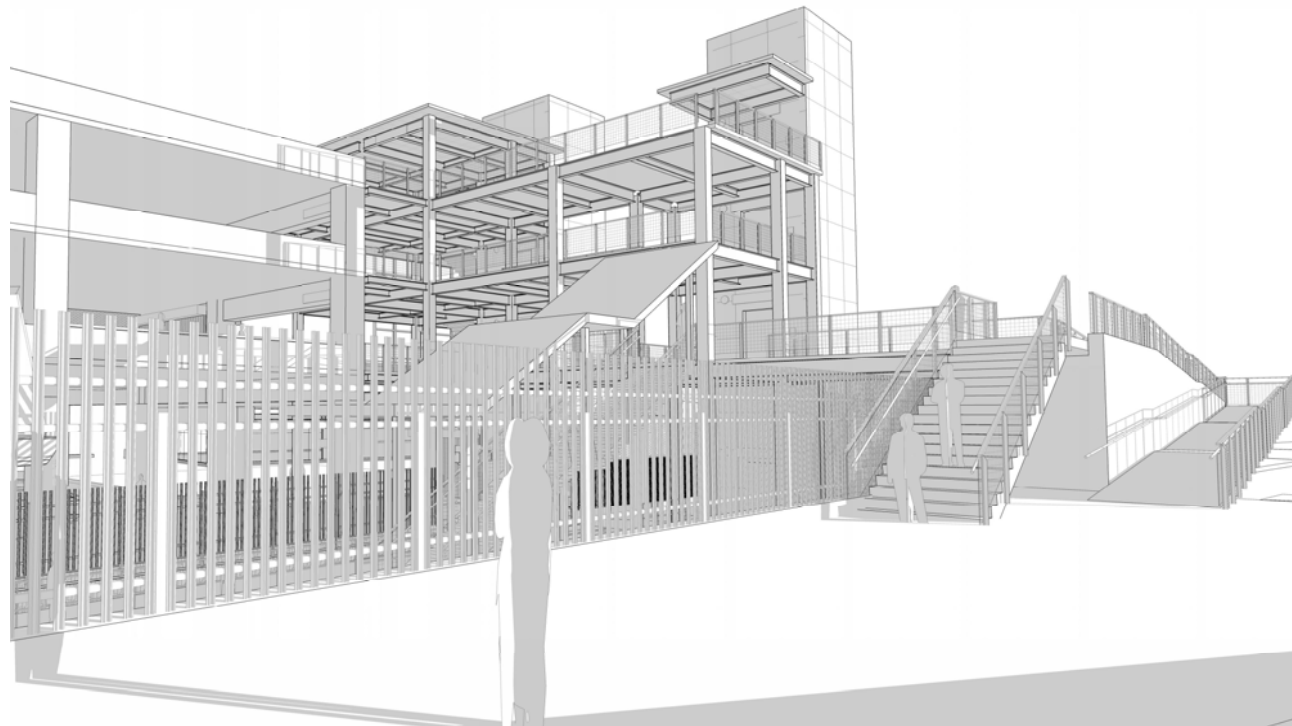
Redmond Technology Center Station

View from passenger drop off area

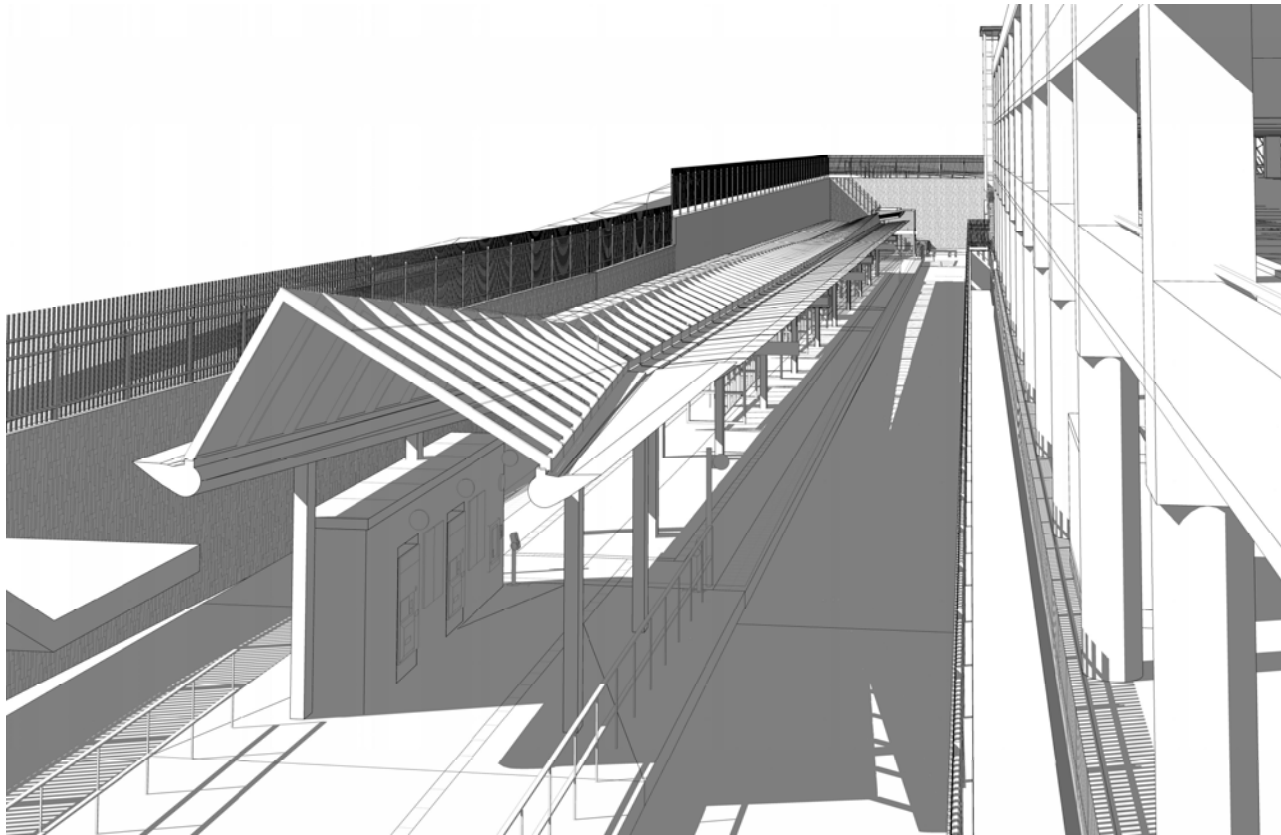


Redmond Technology Center Station

Looking from SR 520 flyer stop

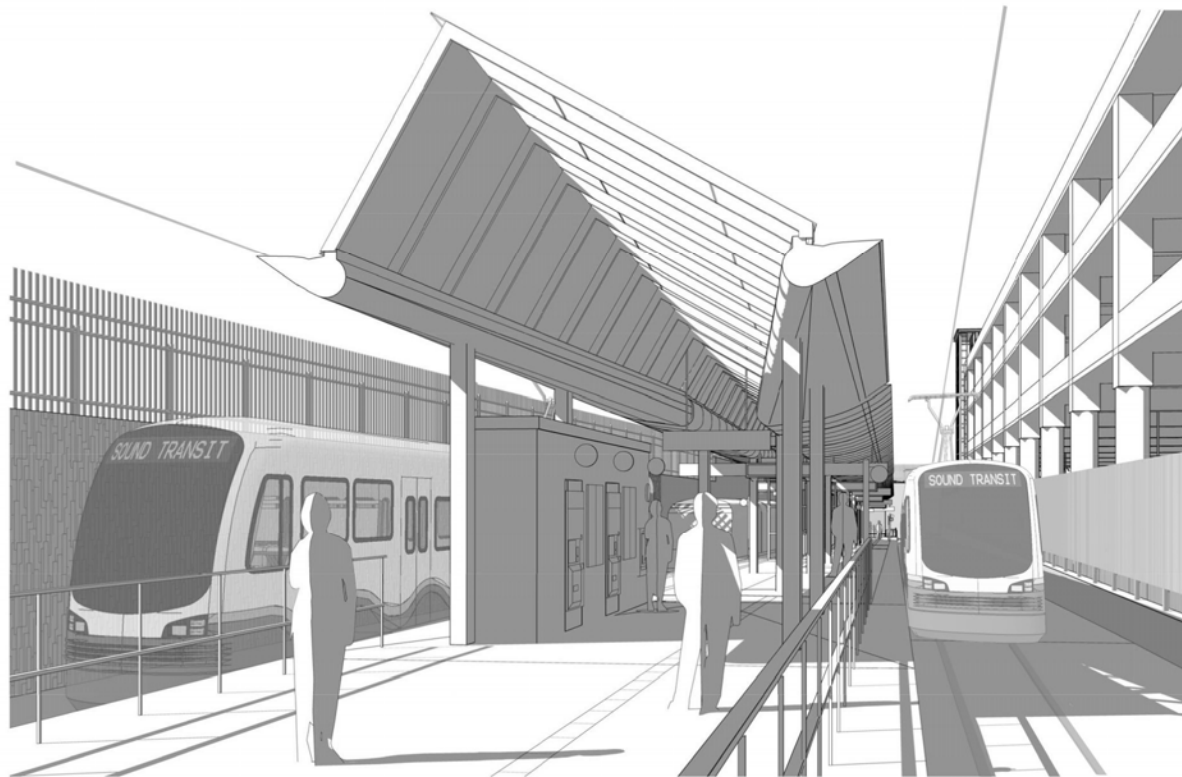


Redmond Technology Center Station



Redmond Technology Center Station

Looking from South Ticketing

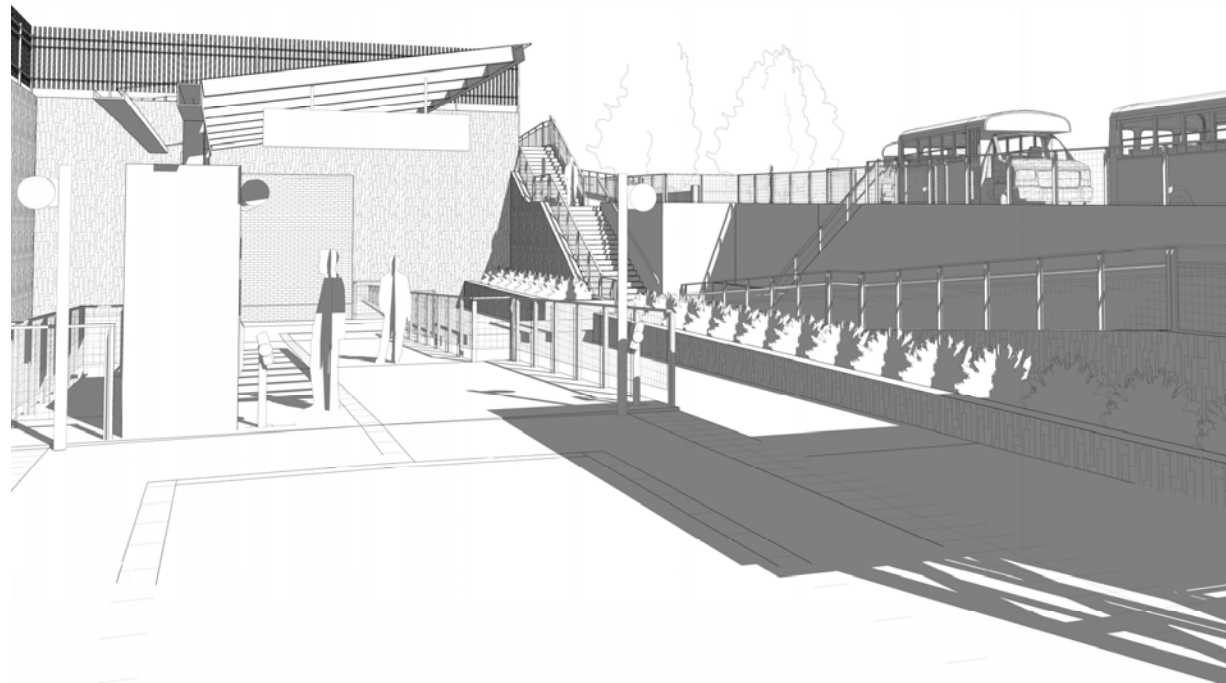


Redmond Technology Center Station

Platform Canopy Looking South



Redmond Technology Center Station – North ticketing



Redmond Technology Center Station

Waiting Area Below Parking Garage





Overlake Transit Center Park-and-Ride closure

Ryan Bianchi, Sound Transit Community Outreach

SStart - Sound Transit's Art Program

© Claudia Fitch, 2003, *Shift*,
Lynnwood Transit Center



© Laura Haddad, 2016, *Cloud*, Angle Lake Station, SeaTac

Overlake Transit Center Park-and-Ride closure

Close the OTC Park-and-Ride



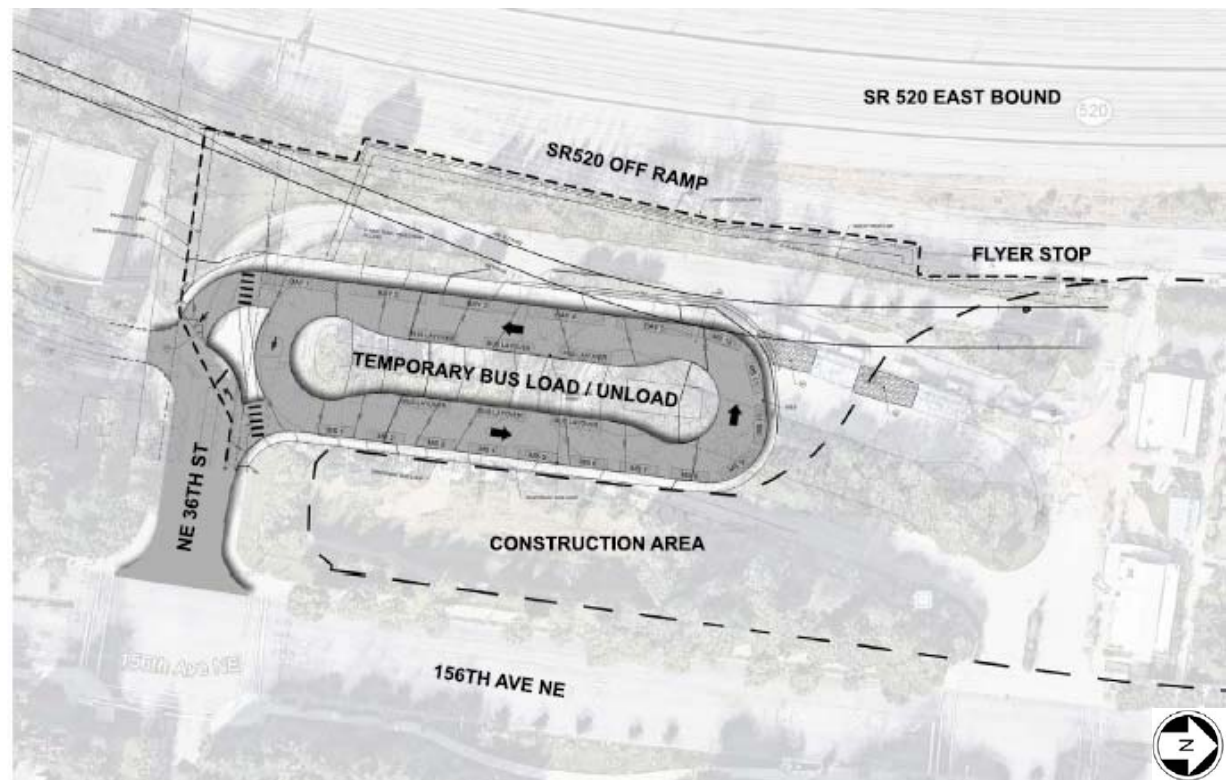
Construct temporary transit loop on south portion of site



Construct parking garage and station at the north portion of the site

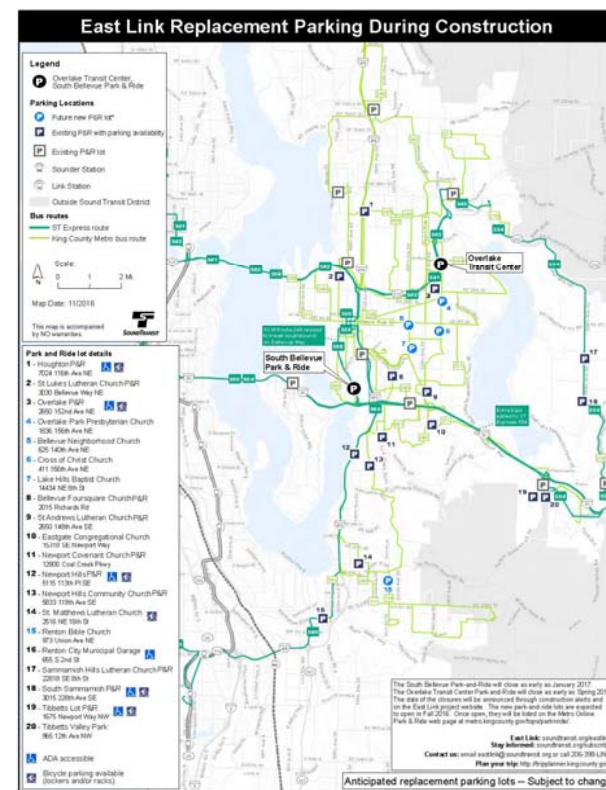


Re-open expanded park-and-ride facility with station by 2023 or sooner if possible



Travel options during construction

1. Use newly leased park-and-ride facilities
2. Use existing park-and-ride facilities with capacity
3. Take advantage of enhanced transit service



New programs, options and incentives



- Justonetrip.org/commute-plan/
- Check out area maps and transportation options at kingcounty.gov/metro
- GoRedmond.com has incentives and resources for Redmond Commuters
- We have an app for that! Download Puget Sound Trip Planner App, available on Google Play and iTunes
- Receive a customized travel plan from Choose Your Way Bellevue by completing a Commute Inquiry Form at chooseyourwaybellevue.org/commute-inquiry/

Stay informed

Schedule a briefing with Sound Transit Community Outreach for yourself, neighborhood group or business.

- Phone/email: 206.398.LINK, eastlink@soundtransit.org
- 24-hr construction hotline: 1.888.298.2395
- **Sign up for construction alerts:**
www.soundtransit.org/subscribe





 **SOUNDTRANSIT**
RIDE THE WAVE

