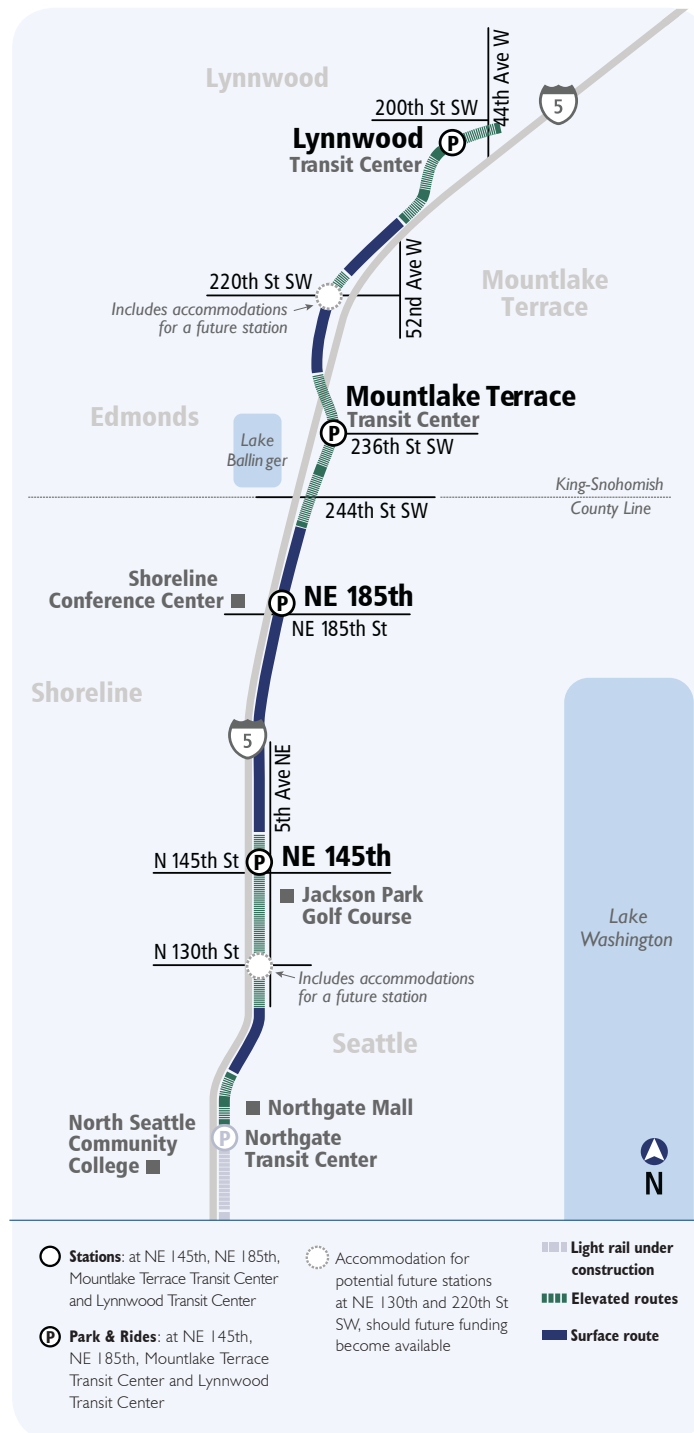


# YOUR FUTURE RIDE



# BENEFITS OF YOUR FUTURE RIDE

## How long will my trip from Lynnwood take?



Ride Link  
and save  
**14-16 minutes**  
on peak morning  
commutes

That's **65 HOURS**  
per year

In that time you  
could watch

**32**  
movies

EACH LINK CAR  
CAN HOLD...



4 bicycles



4 wheelchairs



200 riders



Multiple suitcases



**4** One train  
every  
**MINUTES**  
during peak weekday commutes

# PROJECT SCHEDULE

**2010-2012**

**EVALUATED  
POTENTIAL  
ROUTE AND MODE  
ALTERNATIVES**

**2013-2015**

**ENVIRONMENTAL  
REVIEW**

**2016-2018**

**FINAL DESIGN  
AND PERMITTING**

- Develop and then finalize project design through 30%, 60% and 90% milestones
- Obtain permits
- Pre-construction activities
  1. Utility relocation
  2. Clearing
  3. Field work investigations

**WE ARE HERE**

**2018-2023**

**CONSTRUCTION**

**LATE 2023**

**SAFETY AND  
SYSTEMS TESTING  
OPEN FOR  
SERVICE**

*Subject to change*

5.17

# NE 145TH STATION SITE PLAN





# NE 145TH STATION AERIAL VIEW



- 1 Bike racks
- 2 Parking garage
- 3 Bus drop-off
- 4 Station entrance
- 5 Elevator
- 6 Elevated platform
- 7 Noise wall
- 8 Drop-off/Public gathering



# NE 145TH STATION EXTERIOR VIEWS



NE 145th Station street view (looking north)



NE 145th Station street view (looking south)

- 1 Parking garage
- 2 Bus drop-off
- 3 Station entrance
- 4 Elevator
- 5 Elevated platform

# NE 145TH STATION INTERIOR AND PLATFORM VIEWS



NE 145th Station concourse view

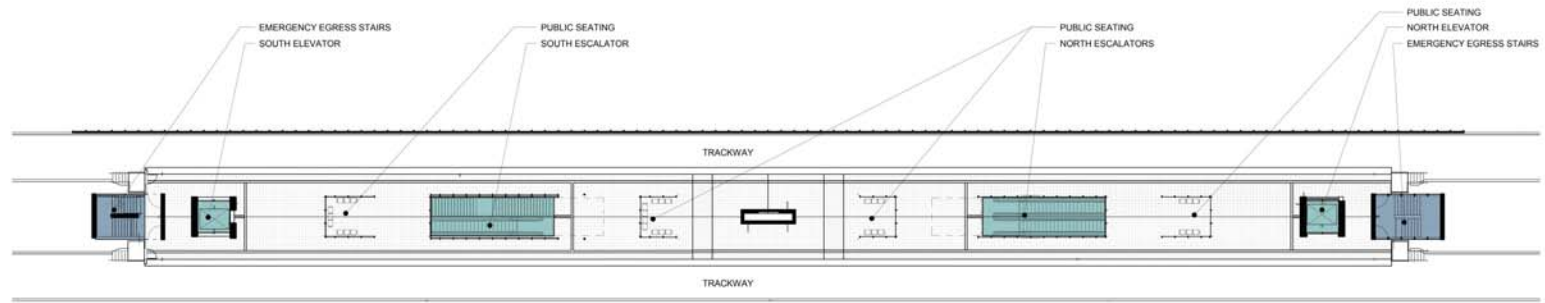
- 1 Elevator
- 2 Escalator
- 3 Ticket vending machine & information
- 4 Stairs
- 5 Public restrooms



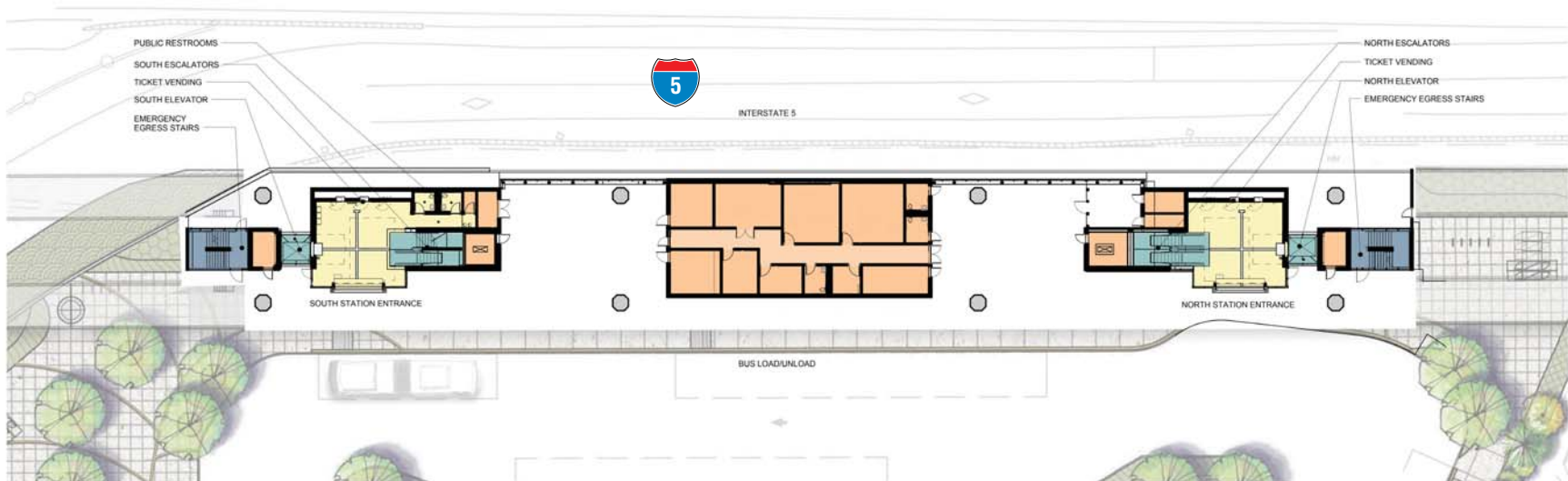
NE 145th Station platform view



# NE 145TH STATION PLAZA AND PLATFORM LEVEL PLANS



145th ST. STATION: PLATFORM LEVEL PLAN



145th ST. STATION: PLAZA LEVEL PLAN

## LEGEND

- PUBLIC SPACE
- VERTICAL CIRCULATION
- EGRESS STAIRS
- ANCILLARY SPACE





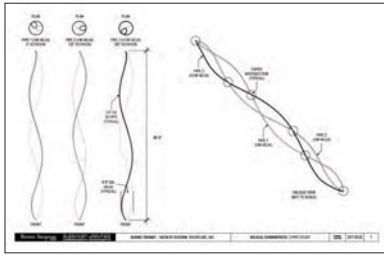
# Sound Transit Art Program

## NE 145th Station Artwork | Buster Simpson



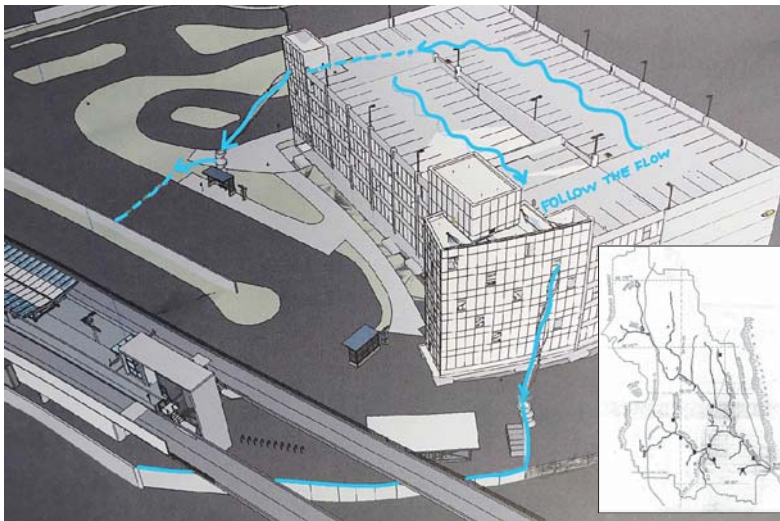
Local luminary Buster Simpson is developing two sculptures which he is calling "Helical Sine Wave Trusses." Simpson's projects for the station are a continuation of his long practice of exposing and celebrating institutional

infrastructure. He is particularly drawn to the way water is controlled and used in urban places. Related artwork can be in Seattle along Vine Street in the Belltown neighborhood, at the Brightwater Treatment Plant in Snohomish County and, within the next few years, along Seattle's Central Waterfront.



Simpson writes "the Helical Sine Wave Truss is a metaphoric sculptural conveyance storm water coming off the station garage's roof into a mitigating bog and moss landscape. The form's curving rivulets suggest the dynamics of the

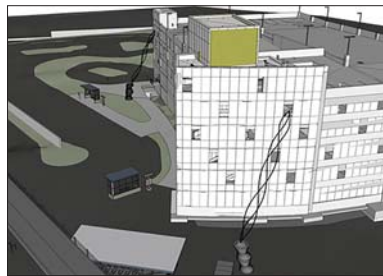
water's meander, making transparent, legible and instructive the respectful journey of water at this, one of the sources of Thornton Creek."



Concept sketch showing the movement of storm water from the station garage.



View of the west garage façade looking towards southeast.



View of the west and south garage façades looking NE.



Water Glass (2001)  
Seattle, Washington



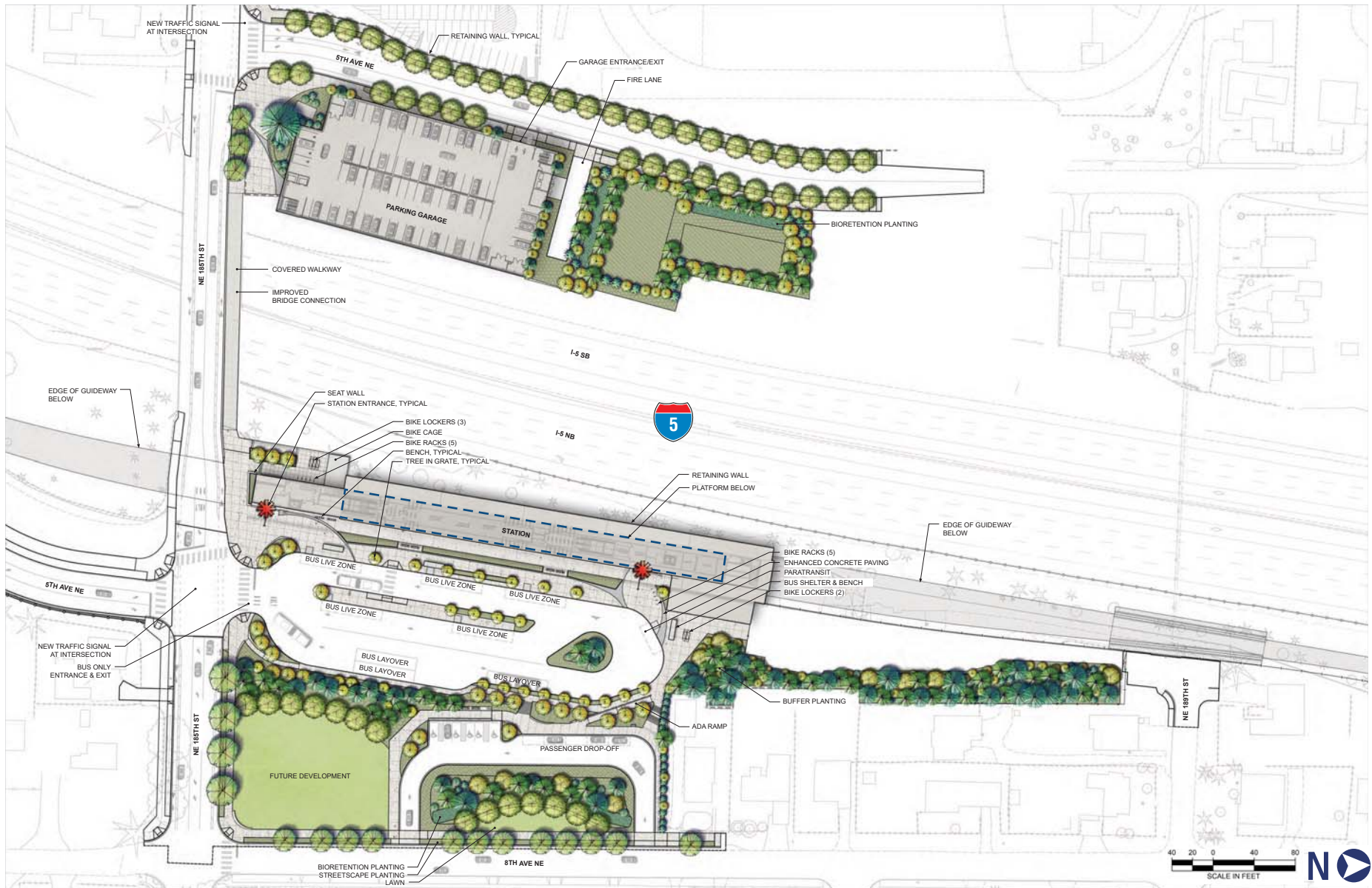
Whole Flow (2009)  
Pasadena, California



Beckoning Cistern (2003)  
Seattle, Washington

Examples of the artist's past work related to this project at the NE 145th Station garage.

# NE 185TH STATION SITE PLAN





# NE 185TH STATION AERIAL VIEW





# NE 185TH STATION EXTERIOR VIEWS



NE 185th Station street view (looking north)



NE 185th Station street view (looking south)

- 1 Bus drop-off
- 2 Station entrance
- 3 Ticket vending machines
- 4 Bike racks



# NE 185TH STATION INTERIOR AND PLATFORM VIEWS



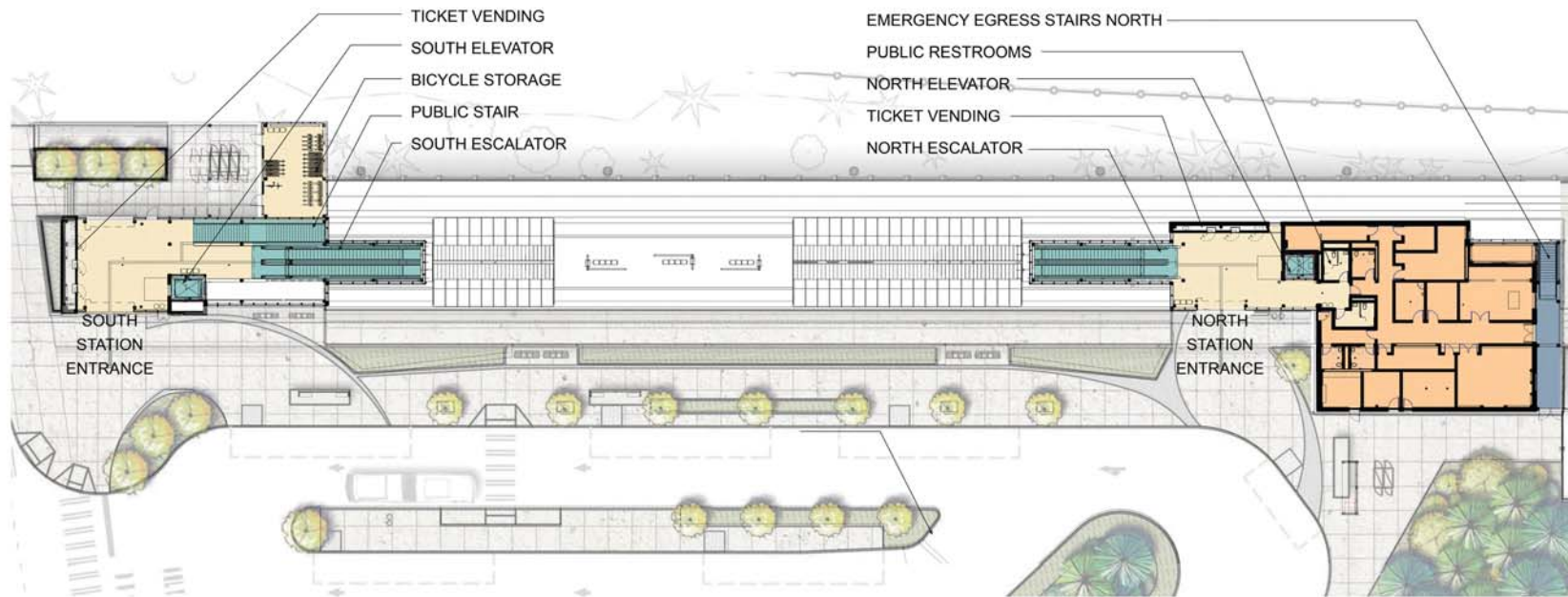
NE 185th Station concourse view

- 1 Elevator
- 2 Escalator
- 3 Stairs
- 4 Bike racks

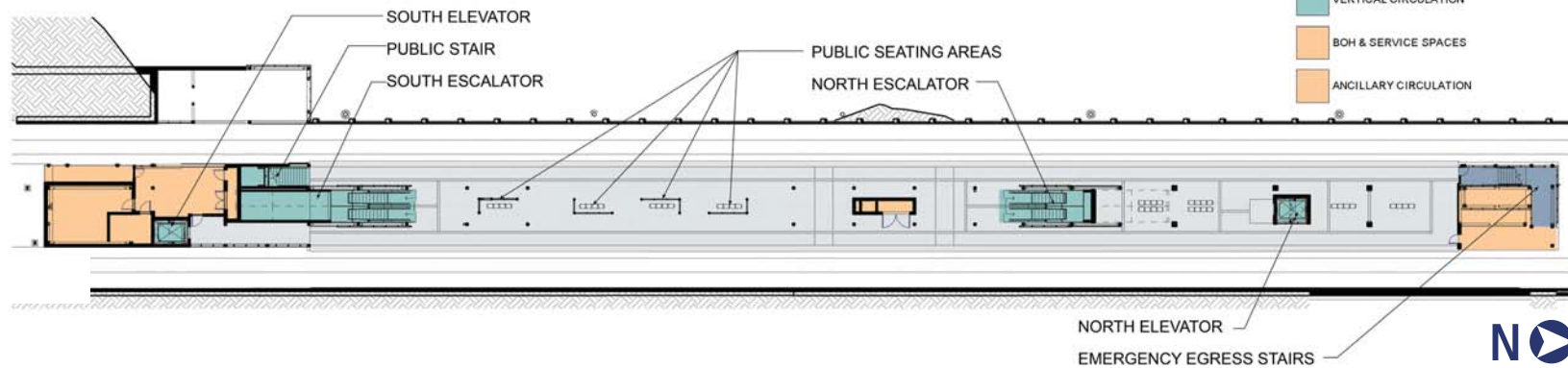


NE 185th Station platform view (looking north)

# NE 185TH STATION PLAZA AND PLATFORM LEVEL PLANS



NE 185TH ST STATION: PLAZA LEVEL PLAN



- LEGEND:
- EMERGENCY EGRESS STAIRS
  - PUBLIC SPACES
  - VERTICAL CIRCULATION
  - BOH & SERVICE SPACES
  - ANCILLARY CIRCULATION



# Sound Transit Art Program

## NE 185th Station Artwork | Mary Lucking

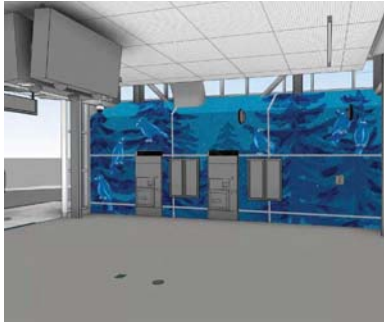


Arizona-based artist Mary Lucking is working on a series of murals and cut metal screens populated with images of imagined birds and plants. She thinks of the birds as stand-ins for the station's neighbors and writes "in some places, the birds are

hanging out in a group, like people waiting for a train. Their postures and gazes suggest that they are talkative, bored, shy, sleepy, curious or wistful – the emotions of the daily commute. Like real birds, they share our physical space, but experience it in a different way."



Lucking's inspiration comes from a variety of sources, including her exploration of local neighborhoods set amid tall trees, the forests of folktales and the notion of nests as a metaphor for home.



Concept sketch of mosaic technique on ticketing wall in south entrance.



Cut metal plant forms concept on south entrance building.



Detail of mosaic fabrication technique.



Concept sketch showing cut metal bird and plant forms on north entrance building.



# MOUNTLAKE TERRACE SITE PLAN





# MOUNTLAKE TERRACE STATION AERIAL VIEW



- 1 Bike racks
- 2 Bike storage
- 3 Existing parking garage
- 4 Bus drop-off
- 5 Station entrance
- 6 Elevator
- 7 Platform
- 8 Drop-off



# MOUNTLAKE TERRACE STATION EXTERIOR VIEWS



*Mountlake Terrace Station street view (looking north)*



*Mountlake Terrace Station street view (south entrance looking west)*

- 1 Existing parking garage
- 2 Bike storage
- 3 Bus drop-off
- 4 Station entrance
- 5 Platform
- 6 Bike racks
- 7 Elevators



# MOUNTLAKE TERRACE STATION LOBBY VIEWS



*Mountlake Terrace Station north lobby*



*Mountlake Terrace Station south lobby*

- 1 Elevator
- 2 Escalator
- 3 Stairs
- 4 Ticket vending machine & information
- 5 Public restrooms
- 6 Bus drop-off

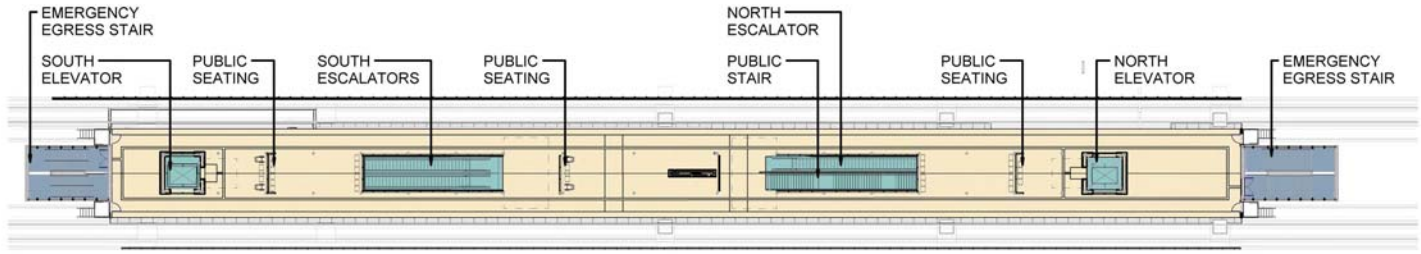
# MOUNTLAKE TERRACE STATION PLATFORM VIEW



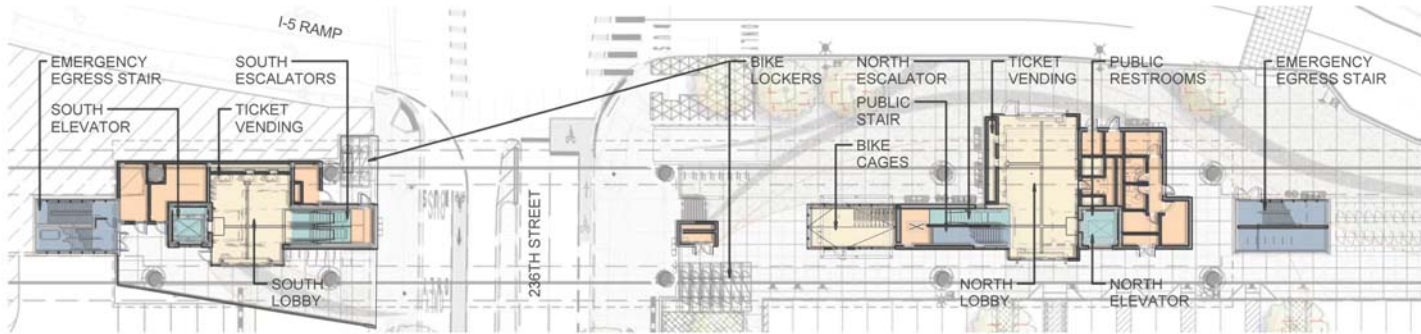
*Mountlake Terrace Station platform view*



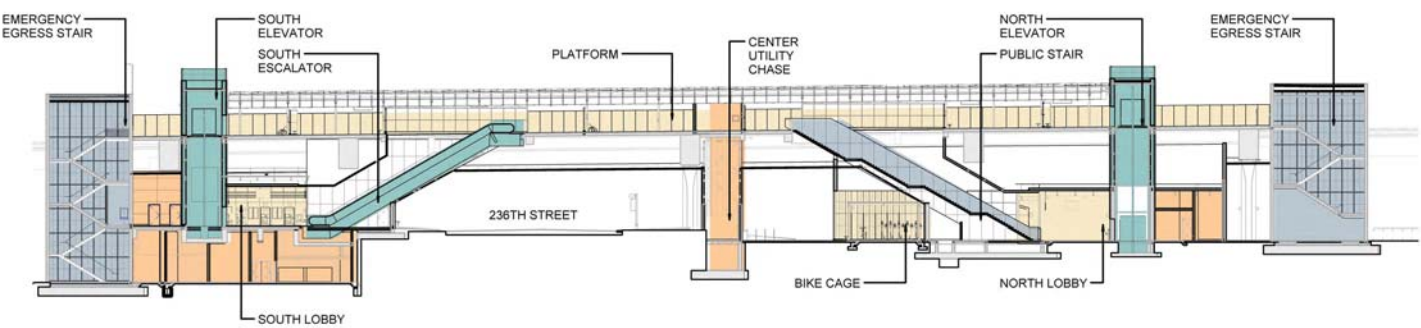
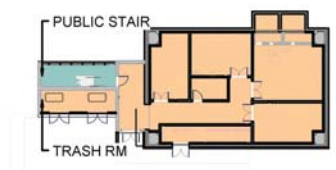
# MOUNTLAKE TERRACE STATION PLAZA AND PLATFORM LEVEL PLANS



PLATFORM LEVEL



PLAZA LEVEL



MLT STATION LONGITUDINAL SECTION

- PUBLIC SPACE
- VERTICAL CIRCULATION
- EMERGENCY EGRESS STAIR
- ANCILLARY SPACE



# Sound Transit Art Program

## Mountlake Terrace Station Artist: Kipp Kobayashi



### ABOUT THE ARTIST

As an artist and urban designer, Kipp Kobayashi has a keen interest in the nature of human interaction in our public environments and is in constant search for ways to initiate dialogue and to promote sociability within these spaces. His medium is informed by the specific mix of these elements, resulting in unexpected combinations that are unique to each project. By focusing on these intersections of the human, cultural and natural factors, he aims to create artwork that can continue to change, grow and evolve along with the world around it; forever changing how we perceive a particular place or thing.

### EXAMPLES OF THE ARTIST'S PAST WORK



Skaters' shadows hover, fly and even transform shape in this project in Southern California. Here, Kobayashi photographed local skaters, turning those images into silhouettes.



Rendered life-size onto the park's surfaces, the silhouettes create the impression that the entire deck is like the surface of a pool of water full of blue rippling waves.



At the entrance to a multi story mixed-use project in Pasadena, Kobayashi chose to explore different types of social connectivity abstractly through a project winding up through an outdoor courtyard.



Imagining what future activities and dialogue might occur here, hundreds of folded "aerogami" shapes were envisioned swirling whimsically above the plaza.



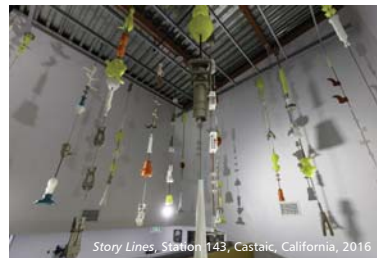
In 2016, Kobayashi was invited to create 6 unique street crossings as part of the Southern California Vision Zero street safety improvements. The initial process involved the tracing of the actual movement of people as they crossed the street.



The artwork also refers to natural systems of migration and flow, including the ocean currents that exist beyond the local breakwater, serving as an analogy to the rejuvenation of this redeveloping downtown area.



Containing the layers of stories that ultimately form each company's unique identity, the objects and tools collected by firefighters that are traditionally displayed within their station hallways provided inspiration for this suspended sculptural composition.



Over 200 scanned and printed objects were arranged in sequential strands. Reminiscent of hoses hanging within traditional drying towers, they serve as an archive of past events while implying multiple combinations of narratives in a lyrical and playful way.



# UNDERSTANDING NOISE WALLS AND NOISE MITIGATION

Below are types of noise mitigation that Sound Transit can use to help reduce noise along Link light rail alignments.

## Elevated sound walls

- Installed close to the track
- Made of stainless steel or aluminum
- Inside surface absorbs sound
- Wall heights range from four feet to 10 feet over the elevated deck
- Provide noise reduction up to 15 decibels
- Audible emergency messages at platform



## Elevated sound barriers

- Thick plastic/rubber sheets used on elevated guideway
- Used when less than 10 decibels noise reduction is needed



## At-grade sound walls

- Typical sound walls seen along freeways
- Made of concrete or engineered composites
- Wall heights can range from eight feet to 26 feet
- Provide noise reduction up to 15 decibels



# TREE MITIGATION

## Trees removed for construction and future operations

Construction of the guideway and stations requires removal of trees along the corridor. Trees will be planted to mitigate those being removed. Sound Transit continues to work with local jurisdictions to maximize planting opportunities and will plant more trees than those being affected.

## Tree placement strategies

Sound Transit continues to work with local jurisdictions to determine where new trees will be planted. Plans may include strategic replacement plantings and community engagement opportunities. The Roadside Master Plan also outlines the future restoration and vegetation landscaping along Interstate 5 where light rail will be constructed.



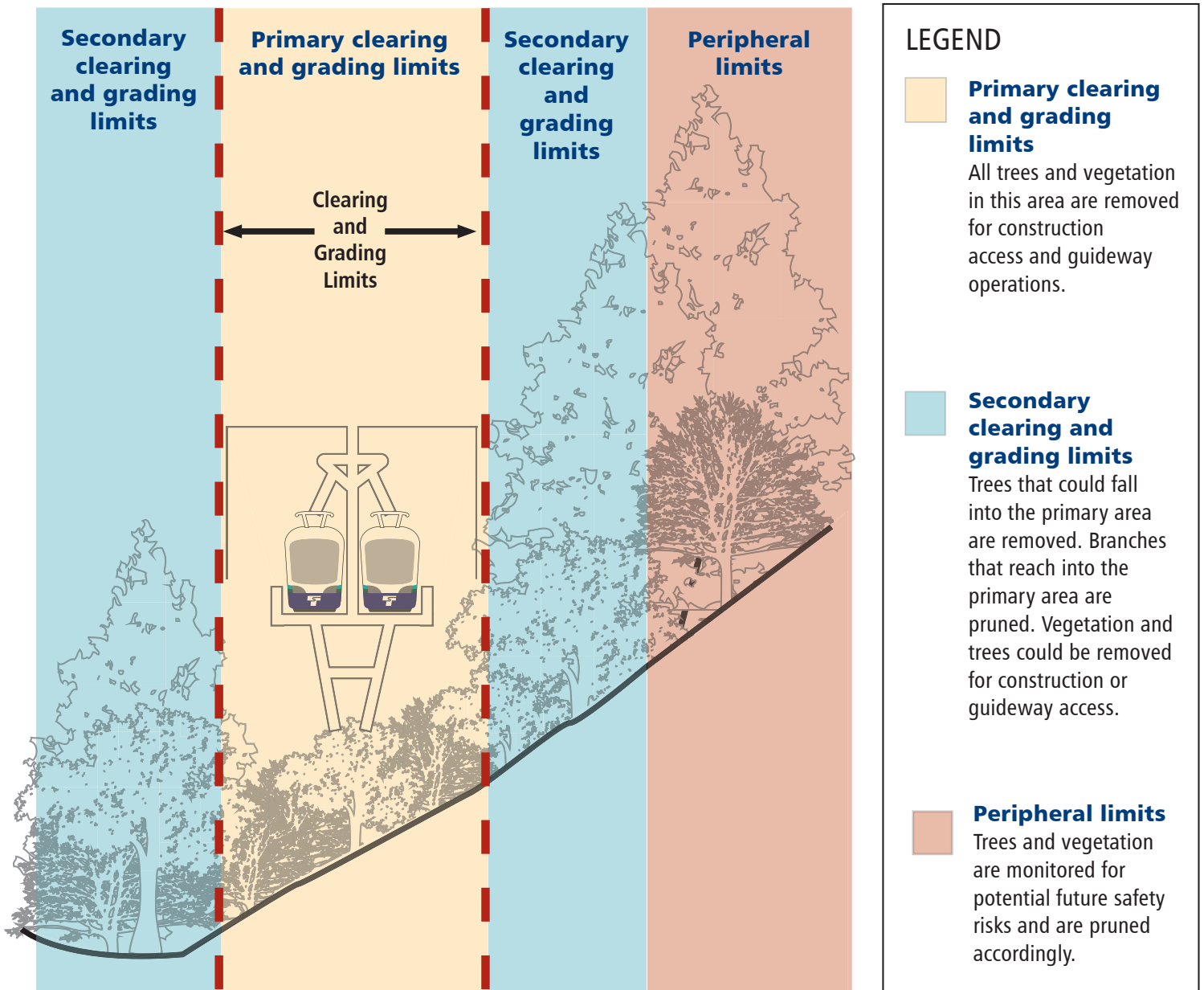
Jurisdiction	Number of trees to be removed	Required replacement plantings	Proposed plantings
Seattle properties	66	67	931
Shoreline properties	253	567	9,474
Mountlake Terrace properties	255	462	1,690
Lynnwood properties	425	426	1,761
WSDOT property corridor wide	4,213	53,037	53,037

\*Projected numbers as of May 1, 2017

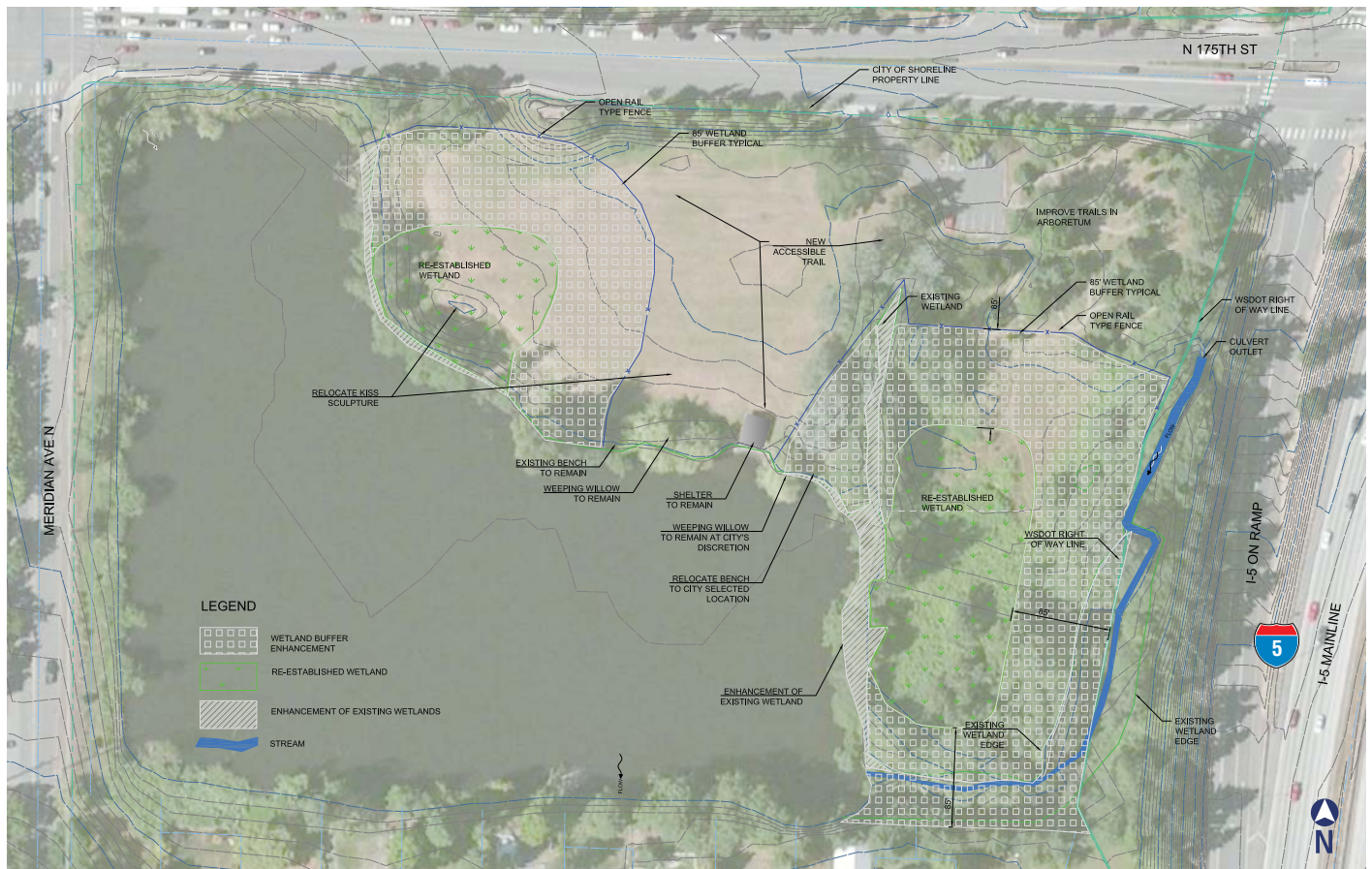


# TREE SAFETY ASSESSMENT

Maintaining a clear area around the Link light rail guideway ensures a safe and reliable space for trains to travel. Removing trees and vegetation minimizes the chance for branches to fall onto the tracks and disrupt service.

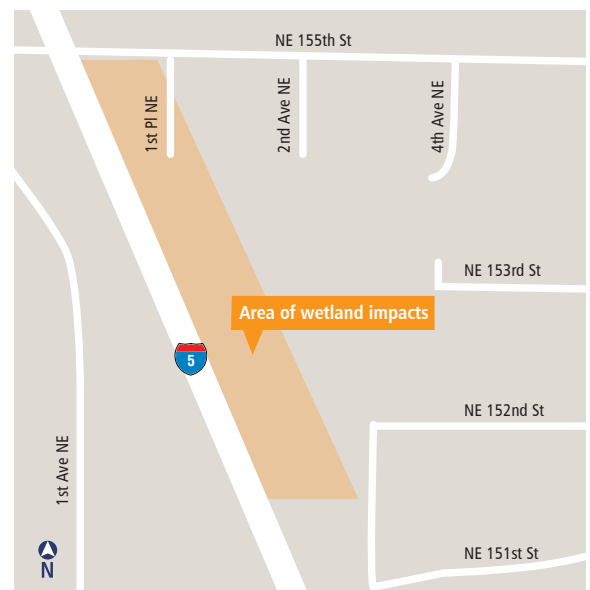


# RONALD BOG MITIGATION PROJECT



Wetland mitigation draft concept (For illustrative purpose only. Not intended to represent final design).

The Lynnwood Link Extension project will permanently impact approximately 0.42 acres of wetlands along I-5 in the City of Shoreline. Sound Transit will mitigate these impacts by reestablishing approximately one acre of wetlands at Ronald Bog Park, which will increase ecological functions and values. Outside of the wetland mitigation areas, new and improved trails will enhance pedestrian access.



Wetland impacts are mitigated through reestablishment of wetlands at Ronald Bog Park.