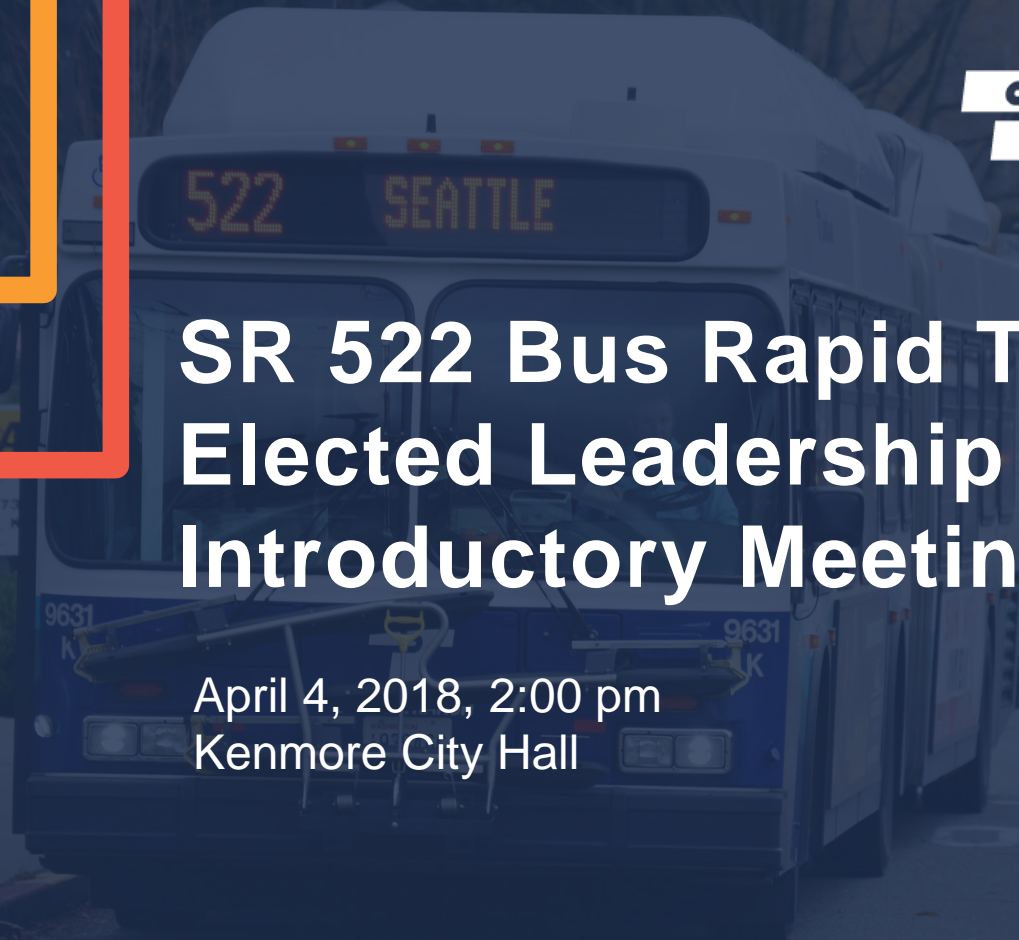




# SR 522 Bus Rapid Transit Elected Leadership Group – Introductory Meeting

April 4, 2018, 2:00 pm  
Kenmore City Hall



# *Welcome & introductions*

- Facilitation team
- Group members
- Agency project managers & staff
- Opening remarks
- ELG meeting goals and expectations

# *What we'll cover today*

- Welcome & introductions
- Public comment
- Project background & overview
- Community and stakeholder engagement process
- ELG charter and next steps

A photograph of two men in conversation, overlaid with a semi-transparent blue filter. The man on the left is wearing a grey sweater and has a backpack. The man on the right is wearing a dark jacket and glasses. They are standing near a glass door or window. The text 'Public comment' is centered over the image in a white, italicized font.

***Public comment***

# *Project background & overview*

- What is BRT?
  - Bus Rapid Transit is a bus-based high capacity transit system that delivers fast, frequent, accessible and reliable bus service connections.

# Connecting the region

## LINK connections

### I-405 BRT



### Redmond-Seattle-Lynnwood

*Lynnwood City Center & Bellevue Downtown*



### Issaquah-Bellevue-South Kirkland

*Bellevue Downtown*



### Everett-Seattle-West Seattle

*Lynnwood City Center*



### SR 522/SR 523 BRT



### Redmond-Seattle-Lynnwood

*Shoreline South/145th*



### Everett-Seattle-West Seattle

*Shoreline South/145th*

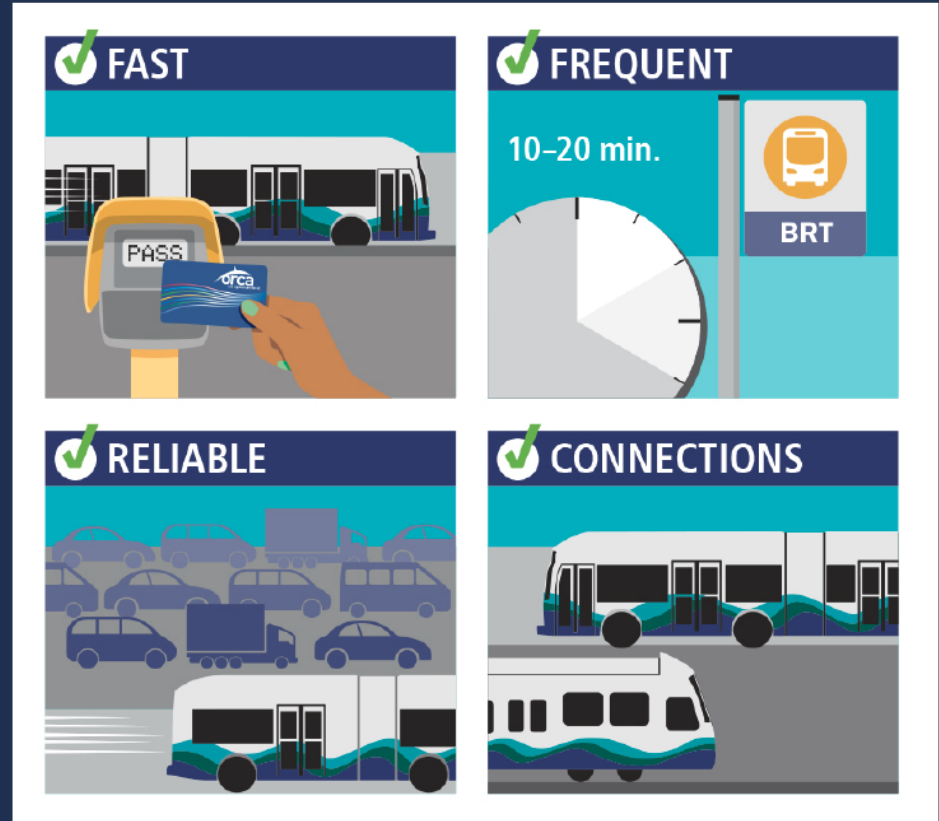


# ***BRT: A new line of service***

- Opens in 2024
- Two corridors (I-405 and SR 522/SR 523)
- Transit speed, reliability and access improvements
- BRT stations (signage, shelter, amenities)
- Parking facilities
- New BRT bus fleet
- Bus operations and maintenance facility
- Branding
- Rider information system

# *Fast, frequent, reliable service*

- 10-minute peak and off-peak for SR 522, 20-minute for Woodinville
- Up to 19 hours of service Monday through Saturday
- Up to 17 hours on Sunday





# ***BRT elements of success***

## ***Performance***

- Speed, Reliability, Dwell times, Headways
  - Roadway: Bus ways, BAT lanes, queue jumps, transit signal priority
  - Stations: Level boarding, off-board fare collection, rider information
  - Service: Frequent, all day service

## ***Branding***

- BRT Vehicles and Station Design

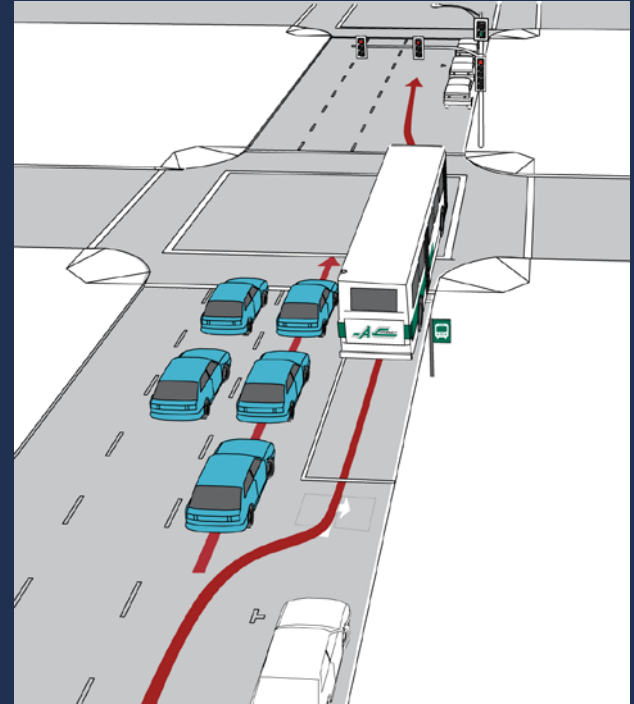
# Bus running ways



Bus Only Lane



BAT Lane

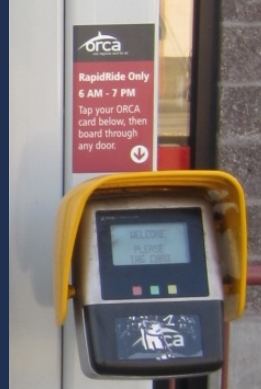


Bus Queue Jump

# Stations / enhanced stops



**Raised Platforms**



**Off-Board Fare Collection**



**Real-Time Information**

# Service



**Route Simplicity, All Day Service**



**Frequent Service**

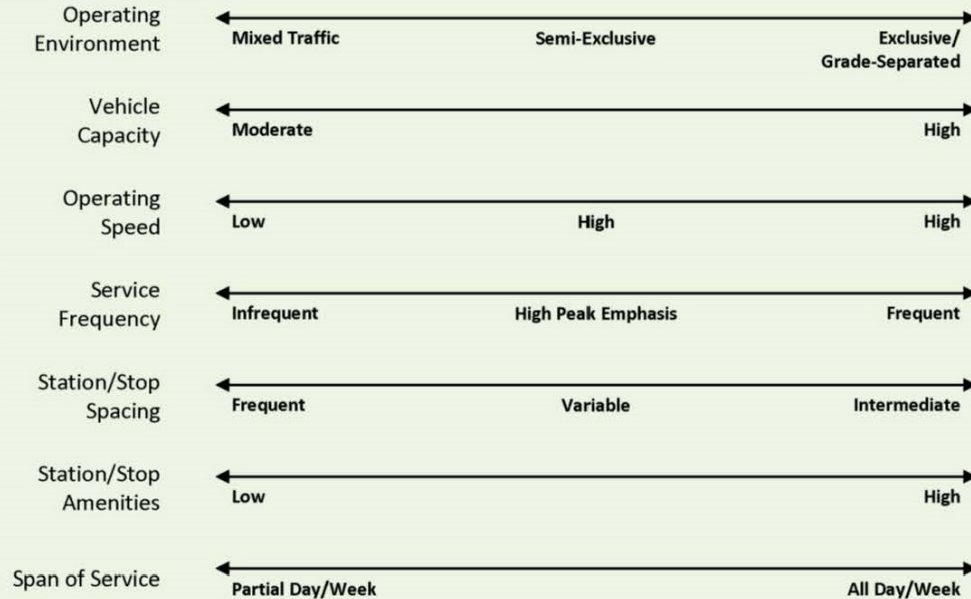
# Branding



# Bus technology characteristics

## Bus Technology Characteristics

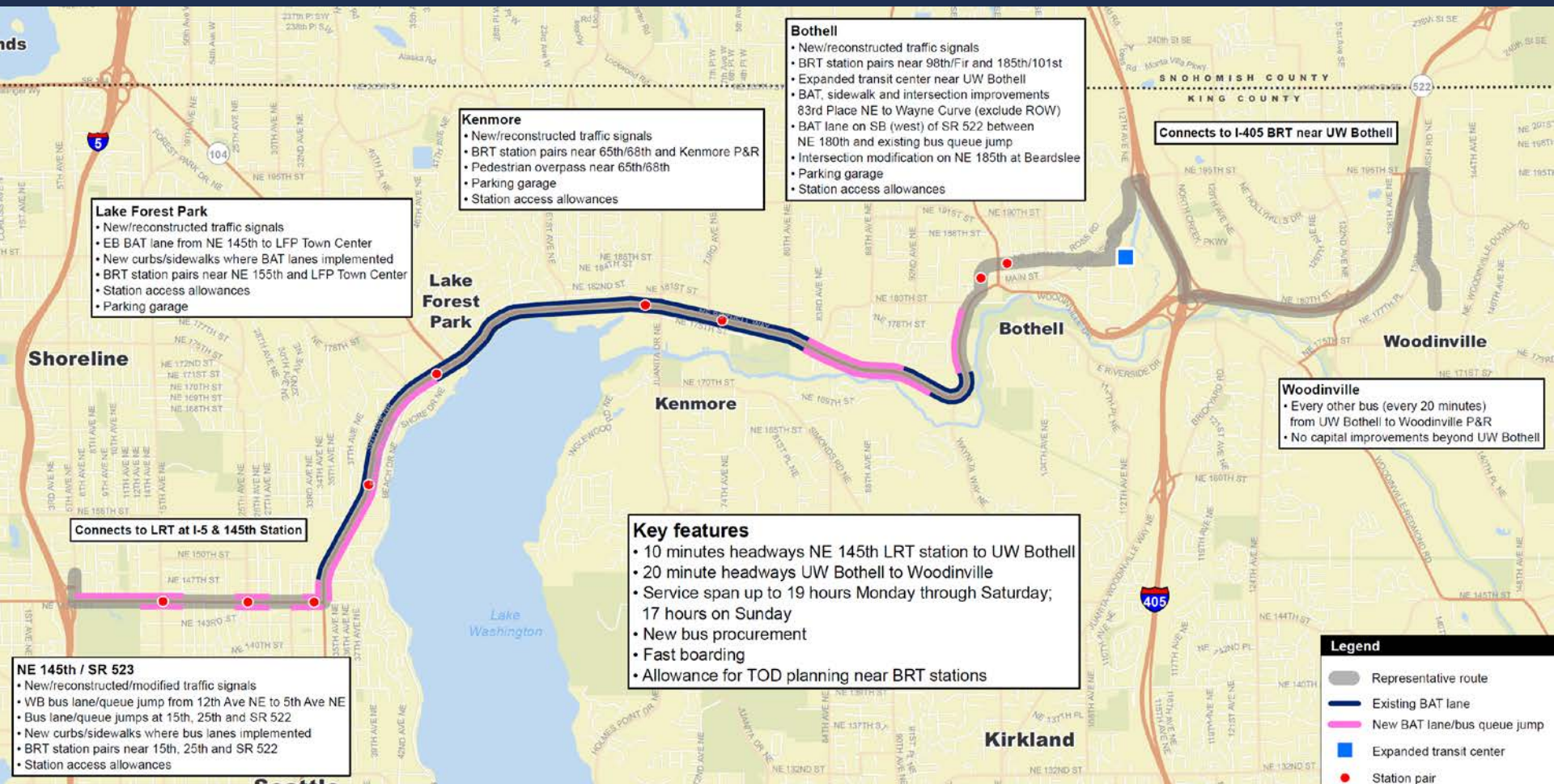
Transit technologies will exhibit many—but not necessarily all—of the characteristics associated with their location on the spectrum.



### Typical Placement on the Spectrum



# BRT in the SR 522 corridor



**Bothell**

- New/reconstructed traffic signals
- BRT station pairs near 98th/Fir and 185th/101st
- Expanded transit center near UW Bothell
- BAT, sidewalk and intersection improvements
- 83rd Place NE to Wayne Curve (exclude ROW)
- BAT lane on SB (west) of SR 522 between NE 180th and existing bus queue jump
- Intersection modification on NE 185th at Beardslee
- Parking garage
- Station access allowances

**Kenmore**

- New/reconstructed traffic signals
- BRT station pairs near 65th/68th and Kenmore P&R
- Pedestrian overpass near 65th/68th
- Parking garage
- Station access allowances

**Lake Forest Park**

- New/reconstructed traffic signals
- EB BAT lane from NE 145th to LFP Town Center
- New curbs/sidewalks where BAT lanes implemented
- BRT station pairs near NE 155th and LFP Town Center
- Station access allowances
- Parking garage

Connects to I-405 BRT near UW Bothell

**Woodinville**

- Every other bus (every 20 minutes) from UW Bothell to Woodinville P&R
- No capital improvements beyond UW Bothell

**Key features**

- 10 minutes headways NE 145th LRT station to UW Bothell
- 20 minute headways UW Bothell to Woodinville
- Service span up to 19 hours Monday through Saturday; 17 hours on Sunday
- New bus procurement
- Fast boarding
- Allowance for TOD planning near BRT stations

Connects to LRT at I-5 & 145th Station

**NE 145th / SR 523**

- New/reconstructed/modified traffic signals
- WB bus lane/queue jump from 12th Ave NE to 5th Ave NE
- Bus lane/queue jumps at 15th, 25th and SR 522
- New curbs/sidewalks where bus lanes implemented
- BRT station pairs near 15th, 25th and SR 522
- Station access allowances

**Legend**

- Representative route
- Existing BAT lane
- New BAT lane/bus queue jump
- Expanded transit center
- Station pair

# *Partnering agreements*

- Partners Concurrence Document signed by Cities, WSDOT, King County, November 2017
- City Partnering Agreements, in development



# I-405 BRT corridor

- Connects:
  - Lynnwood Link and East Link in Bellevue
  - East Link in Bellevue and Burien
  - To 522 BRT
- Includes BRT Common Elements:
  - Bus Base in Bothell
  - BRT Branding
  - Vehicles
  - Station “Kit of Parts”



# *Project goals*

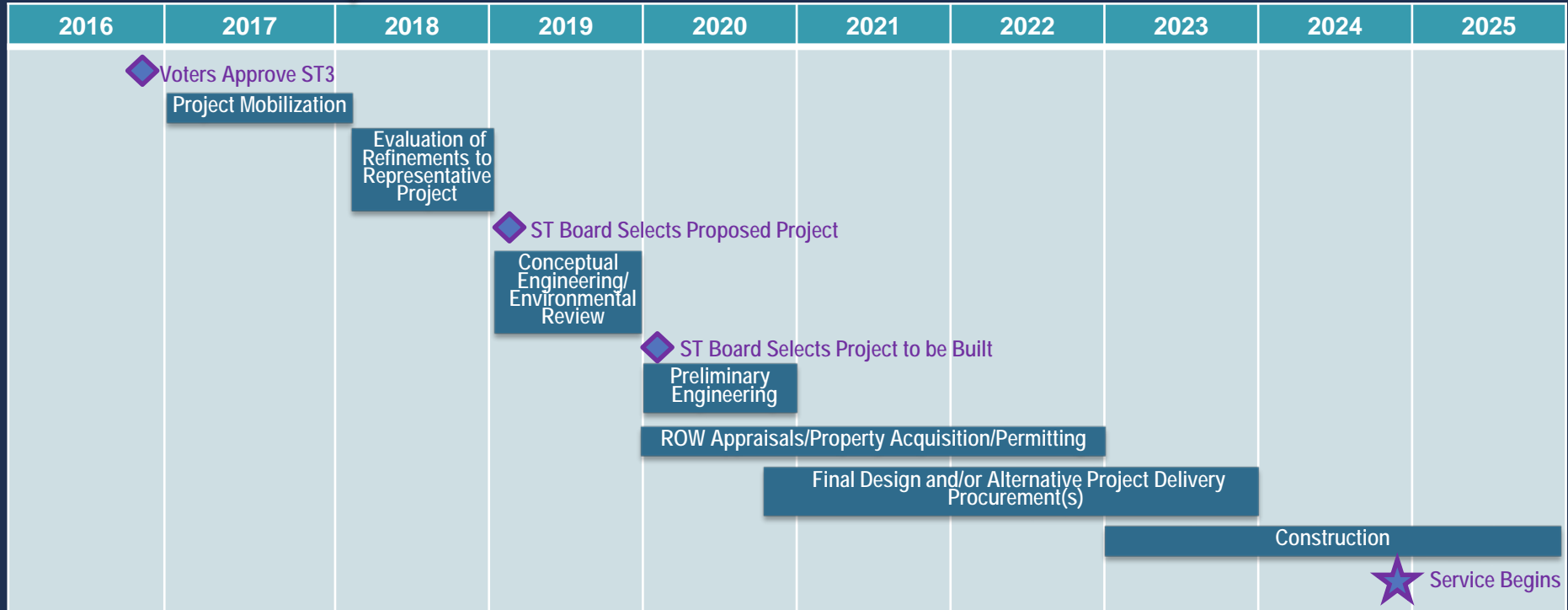
- Deliver the project on time and within budget
- Expand fast, frequent and reliable BRT service
- Increase transit capacity and enhance connectivity
- Make recommendations that are technically and financially feasible and sustainable

## *Project goals, cont.*

- Maximize ridership, improve mobility and provide access for multiple modes and users
- Promote a healthy and sustainable environment
- Consider input from stakeholders, communities and the public along the corridor

# Working schedule

 We are Here



A blue high-speed train is stopped at a station platform. Several people are visible on the platform, some walking and some standing. The train has the number 105 on its side. The scene is overlaid with a semi-transparent blue filter.

***Community and  
stakeholder  
engagement***



# State Route 522 Bus Rapid Transit

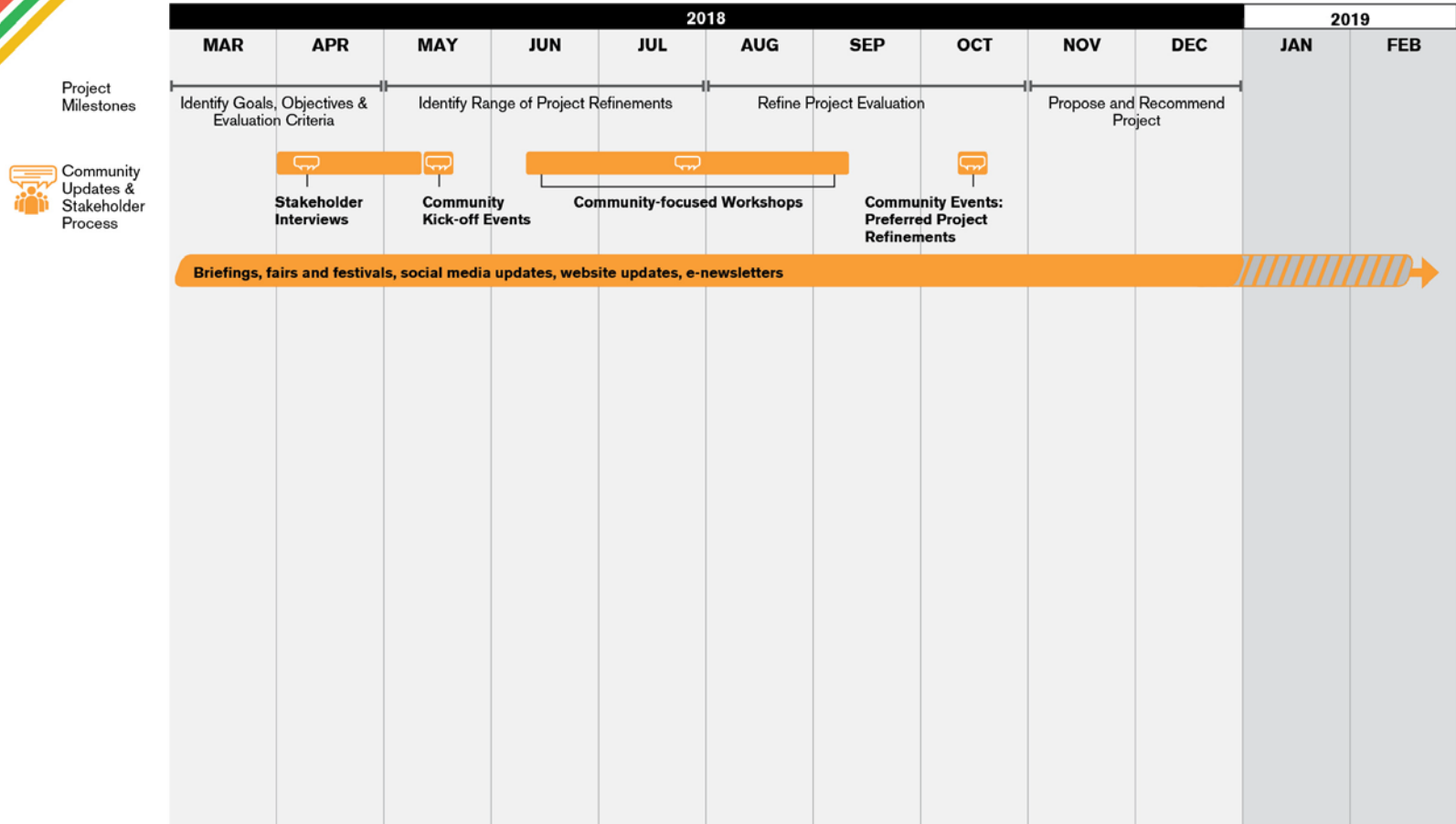
Community Engagement and Collaboration Process

	2018										2019	
	MAR	APR	MAY	JUN	JUL	AUG	SEP	OCT	NOV	DEC	JAN	FEB
Project Milestones	Identify Goals, Objectives & Evaluation Criteria		Identify Range of Project Refinements			Refine Project Evaluation			Propose and Recommend Project			



# State Route 522 Bus Rapid Transit

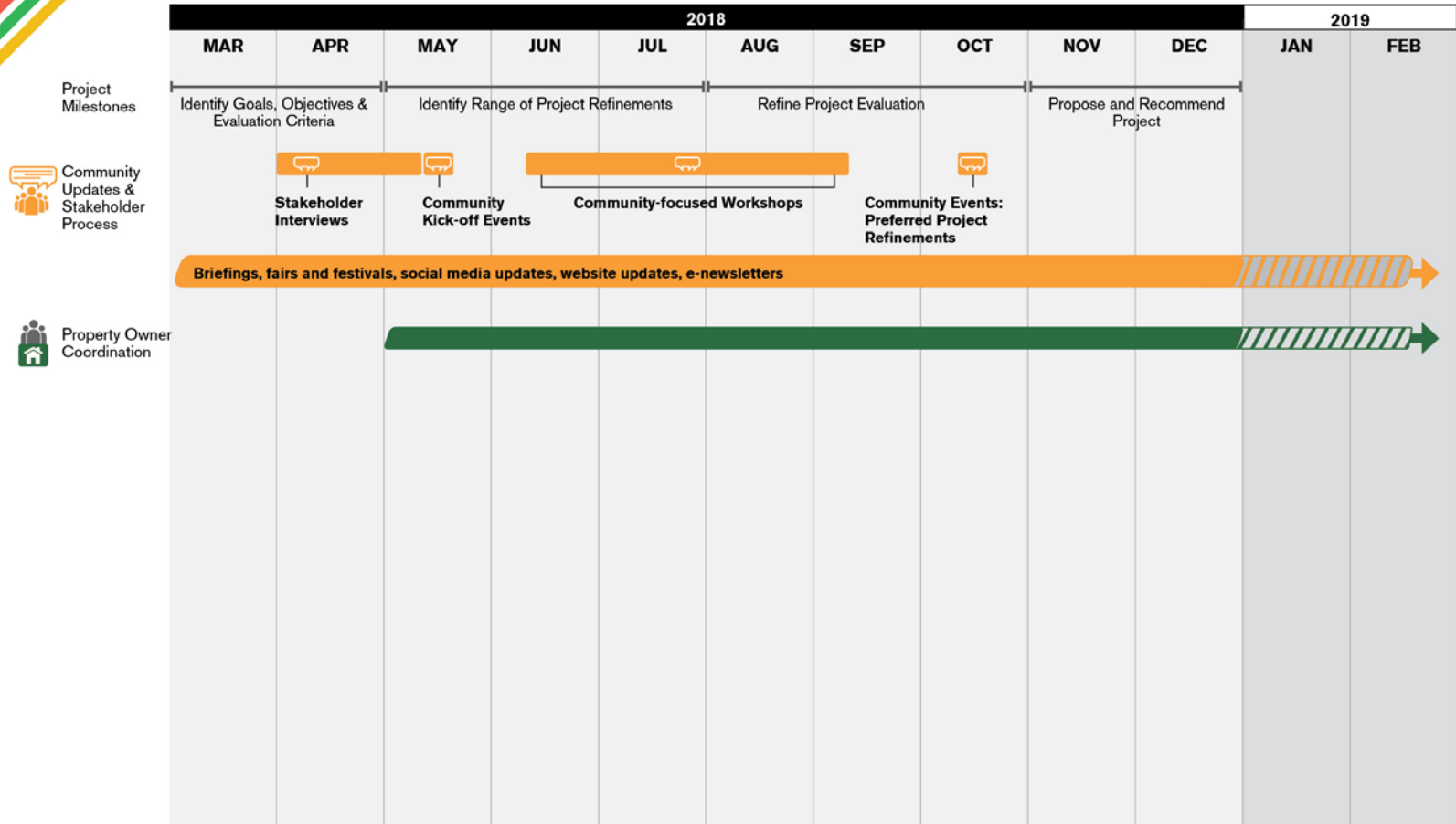
Community Engagement and Collaboration Process





# State Route 522 Bus Rapid Transit

Community Engagement and Collaboration Process

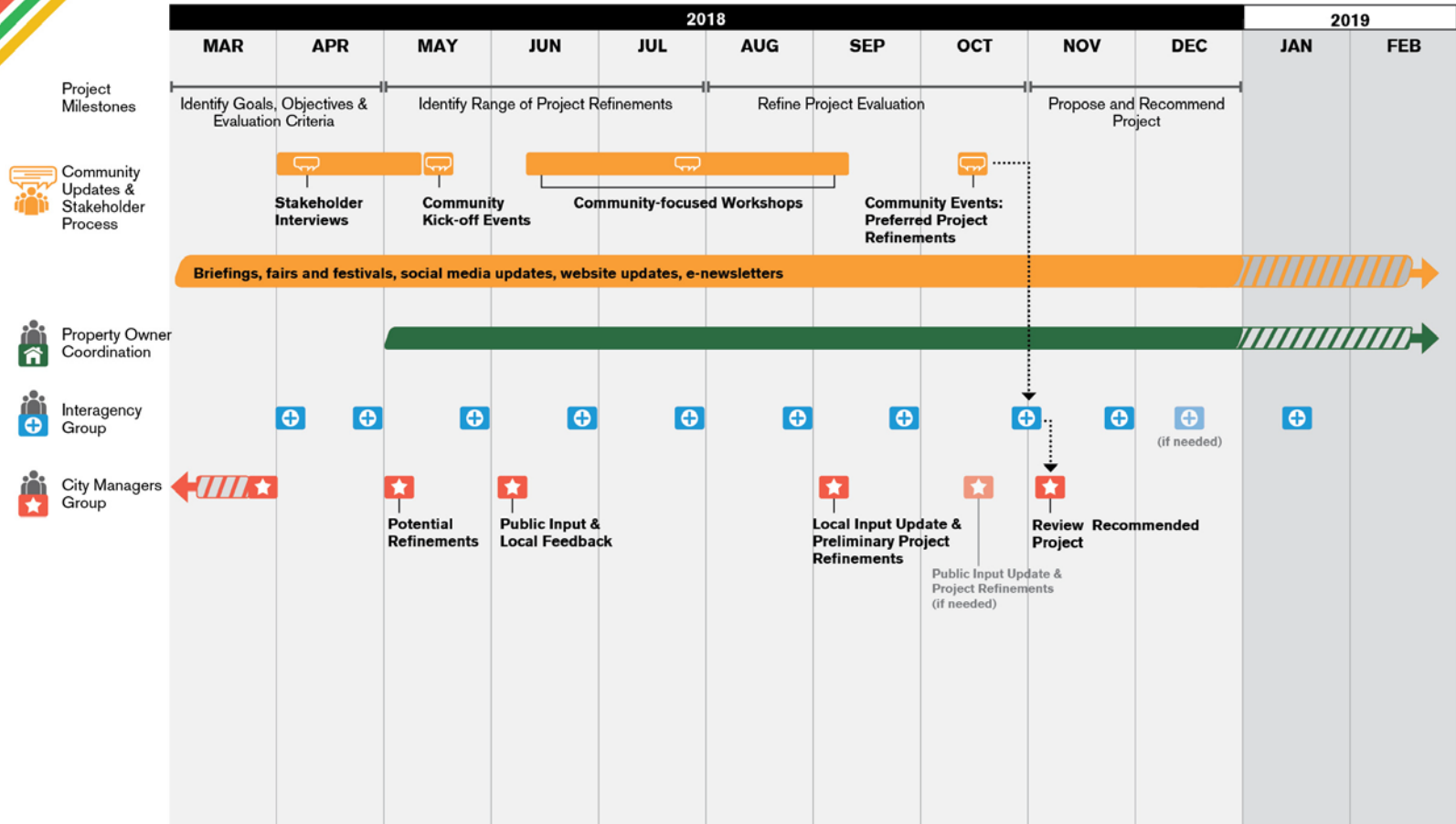






# State Route 522 Bus Rapid Transit

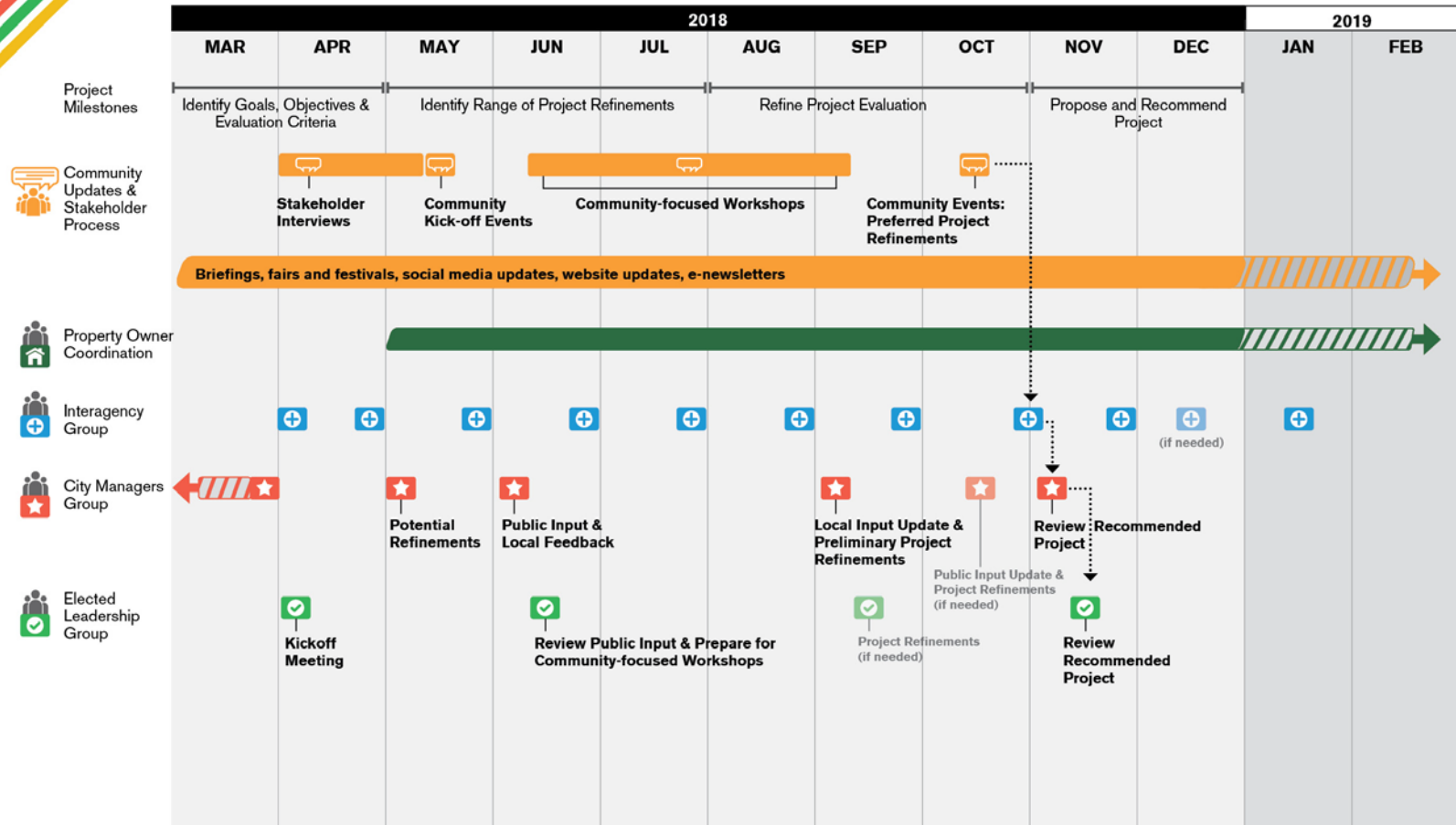
Community Engagement and Collaboration Process





# State Route 522 Bus Rapid Transit

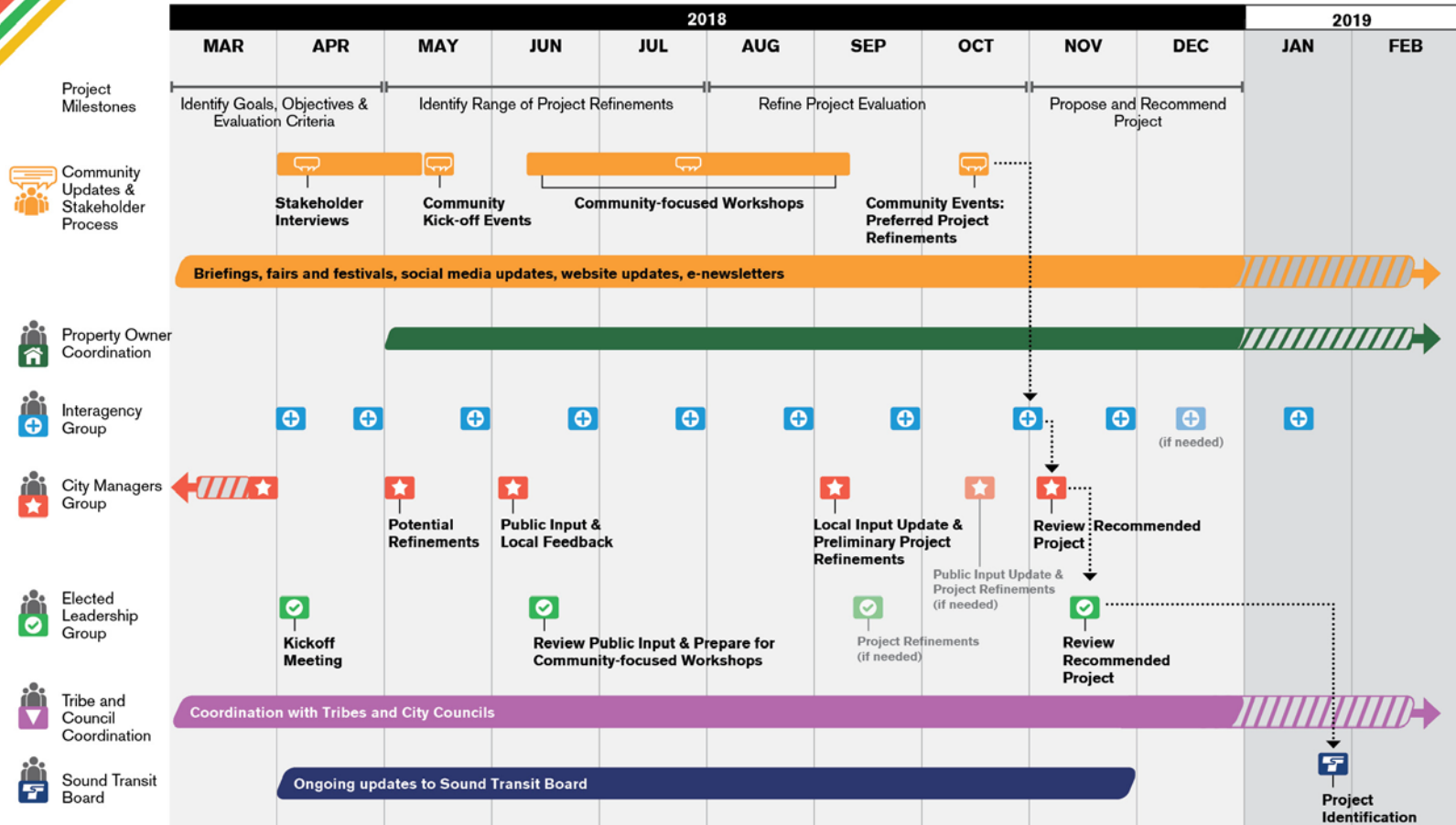
Community Engagement and Collaboration Process





# State Route 522 Bus Rapid Transit

Community Engagement and Collaboration Process



# ***ELG Charter***

- Review of ELG charter
- Discuss questions
- Approve charter

## *Next steps*

- ELG Look-ahead
- Public meetings in May and October 2018
- Community-focused workshops summer 2018
- Interagency and City Managers Groups meetings
- Next ELG meeting June 2018

[soundtransit.org/sr522brt](https://soundtransit.org/sr522brt) 

