

SR 522/NE 145th Bus Rapid Transit

Welcome!
¡Bienvenidos!
歡迎！



*Thank you for joining us.
Gracias por acompañarnos.
感謝加入我們。*

Tonight's agenda

6:00 Open house

6:30 Presentation

6:50 Q & A

7:10 Open house

- Visit stations
- Speak with staff
- Share your comments

8:00 Adjourn



Who is Sound Transit?

We plan, build and operate regional transit systems and services to improve mobility in urban areas of King, Pierce and Snohomish counties.



- ST Express Bus
- Bus Rapid Transit (coming soon!)
- Sounder Commuter Rail
- Link Light Rail

Future service

- Establish Bus Rapid Transit (BRT) to the north, east and south of Lake Washington.
- Build a light rail network extending from Everett to Tacoma, and from Seattle to Redmond and Issaquah.
- Improve access and expand parking at stations.



What is Bus Rapid Transit?

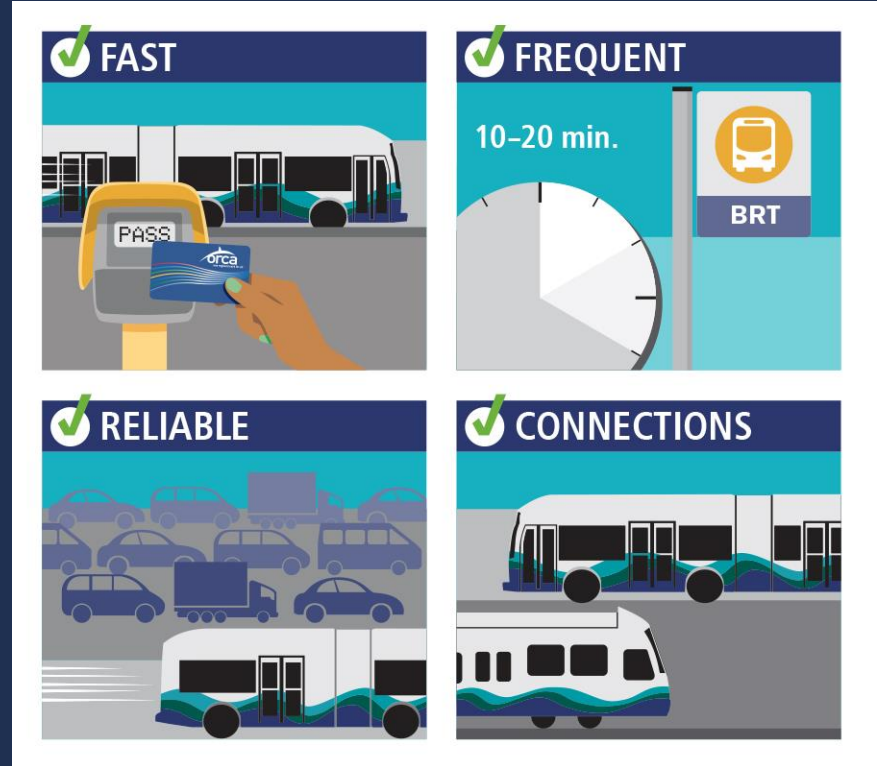


BRT is a **bus-based** high capacity transit system that delivers **fast, frequent, accessible and reliable** bus service connections and will help riders avoid traffic congestion.

Fast, frequent, reliable service

SR 522 BRT infrastructure is designed for fast, frequent and reliable service

- 10-minute peak and off-peak for SR 522, 20 minute for Woodinville
- Up to 19 hours of service Monday through Saturday
- Up to 17 hours on Sunday



Connecting the region

- **SR 522/NE 145th BRT** will connect communities from Shoreline to Woodinville to Link light rail at the Shoreline South/145th Station and to I-405 BRT in Bothell.
- **I-405 BRT** will run from Lynnwood to Burien and connect to Link light rail at Lynnwood, Bellevue and Tukwila.



From representative to refined

- The ST3 Plan established the **representative project**.
- During 2018, we'll start with the **representative project** and consider and evaluate project refinements to recommend a **refined project** to the Sound Transit Board in early 2019.



- The Board will advance the **refined project** into the conceptual design and environment review phase in 2019.

[illegible]

In service 2024

Project subject to change.

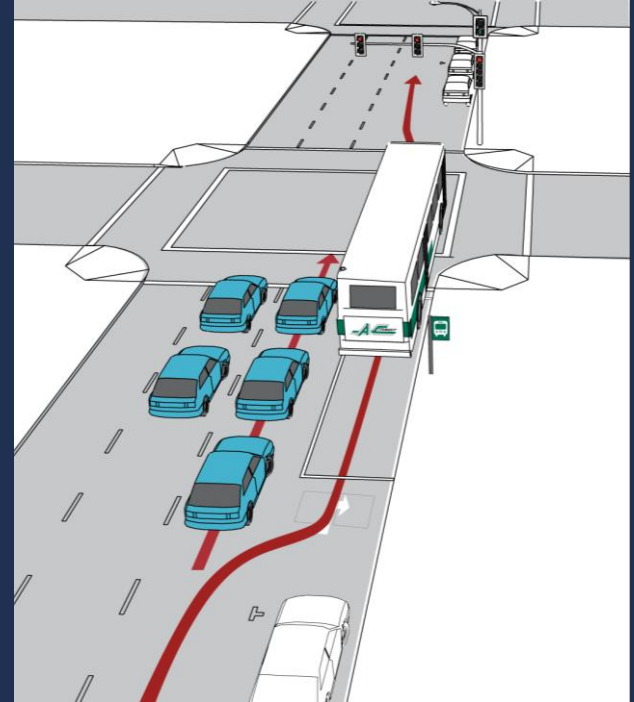
Bus running ways



Bus Only Lane



BAT Lane



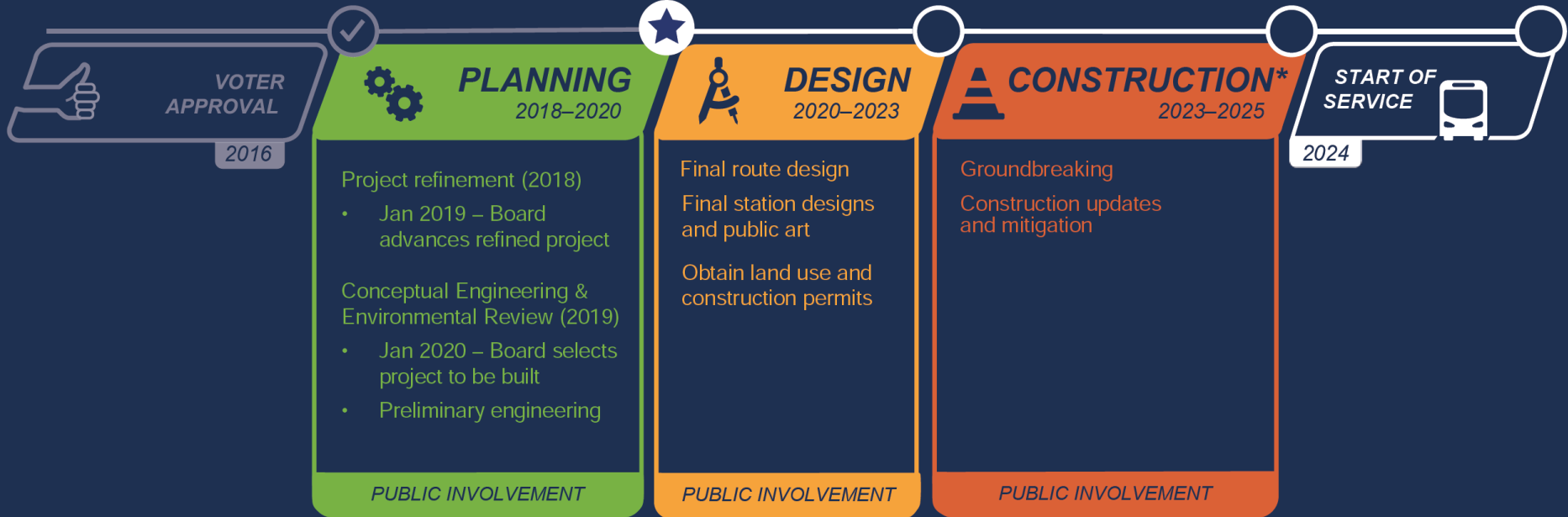
Bus Queue Jump

Community-initiated

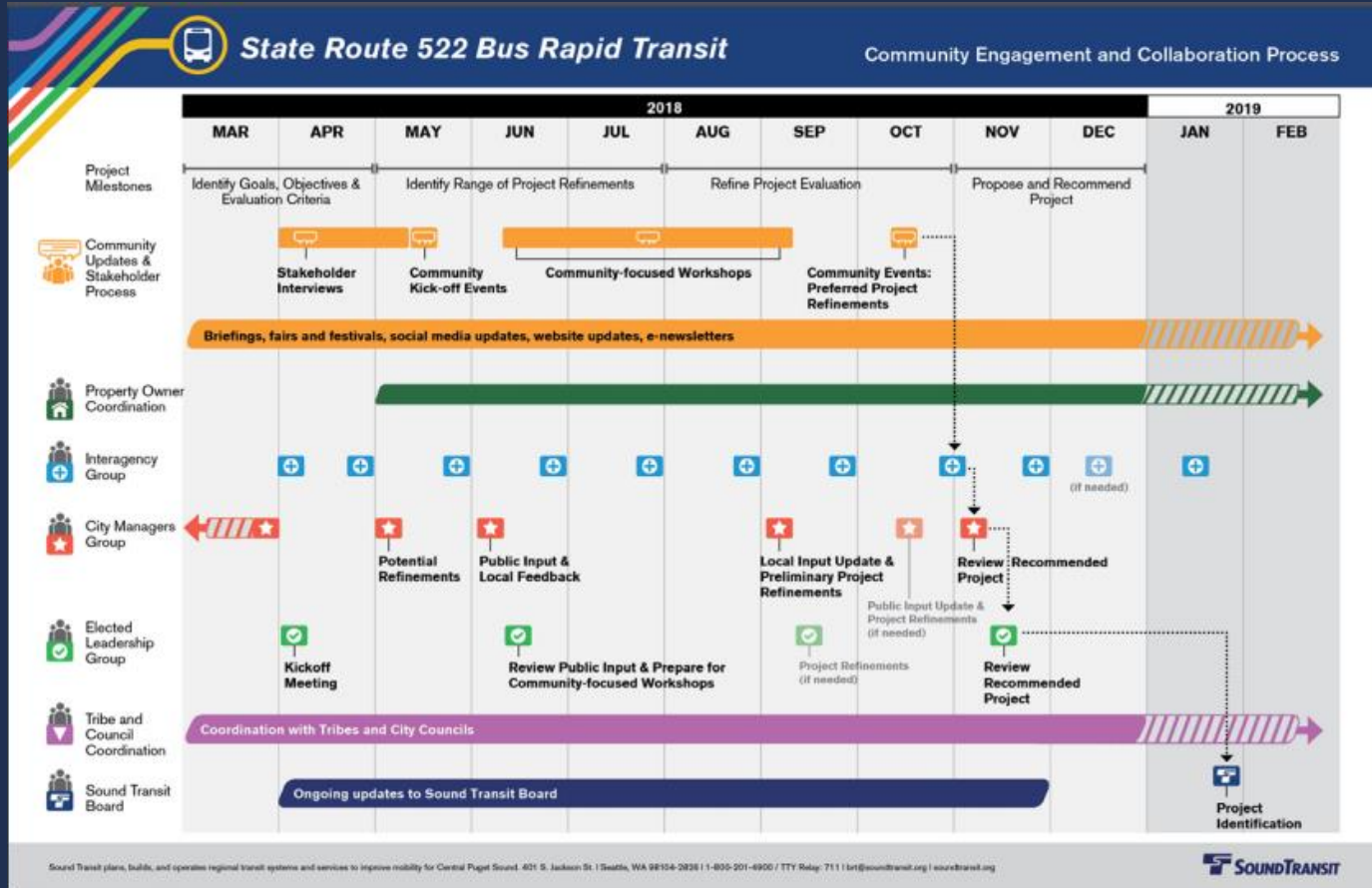


- First proposed by elected officials and staff from corridor jurisdictions.
- The community coalition **522 Transit NOW!** helped ensure that the project was included on the Sound Transit 3 (ST3) ballot for the voters' consideration.

Project timeline



Community engagement process



Share your thoughts

- Vision for BRT in your community?
- Unique aspects of your community that Sound Transit should understand?
- Evaluation criteria you think are most important?
- Other evaluation criteria Sound Transit should consider?
- What are you excited about?
- What concerns do you have?
- Location-specific comments?
- Ideas about project refinements?

How to comment

Add your thoughts to:

- Maps
- Flipcharts.
- Comment forms.
- Agree with something someone else wrote?
Write “+1” next to it to add your voice.

Stay engaged



In person: leave your comments today



Online: sr522brt.participate.online



Email us: brt@soundtransit.org



soundtransit.org/sr522brt



Questions?



Stations to visit

- Station 1: **Share your thoughts!** Where you frequently travel to?
- Station 2: Learn more about Sound Transit and future System Expansion
- Station 3: Learn more about BRT and the SR 522/NE 145th BRT Project. Share your thoughts! Tell us your vision for the future BRT system
- Station 4: Learn more about community involvement and future engagement
- Station 5: **Share your thoughts!** What unique aspects of your community should Sound Transit consider as we refine the project?
- Station 6: **Share your thoughts!** What criteria do you think are most important for Sound Transit to consider?
- Station 7: **Share your thoughts!** Visit the large maps to view and comment on the representative project
- Station 8: **Share your thoughts!** Visit our comment table and learn about next steps and how to stay engaged.