



# *Tacoma Dome Link Extension*

*Elected Leadership Group Meeting #2 | 3.19.18*

# Agenda

- *Elected Leadership Group Housekeeping*
- *Stakeholder Group*
- *Purpose and Need Statement*
- *Early scoping period*
- *Early scoping exercise*



# ***ELG housekeeping***

# *Follow up from last meeting*

- Added “align with land use and environmental goals” and reference to building an Operations and Maintenance Facility (OMF – South) to project guiding principles
- Added alternates to Elected Leadership Group charter



# Schedule recap

## First Stakeholder Group meeting

- 3/28

## Next Interagency Group meeting

- 4/2 (first Mondays)

## Early scoping period 4/2-5/3

- **Agency Meeting**
  - 4/17
- **Public Meetings**
  - 4/17 - Tacoma
  - 4/18 - Federal Way
  - 4/24 - Fife

## Station Area Workshops

- 4/25 - Federal Way
- 4/26 - Tacoma
- 5/1 - Fife



# *Stakeholder Group*

# Stakeholder engagement



Community Updates



Stakeholder Group



Station and Operations & Maintenance Facility Area Workshops



Interagency Group



Elected Leadership Group



Tribe and City Council Coordination



Sound Transit Board

# Stakeholder Group charge

- Discuss key project decisions and work through project issues as needed
- Represent local concerns and perspectives
- Provide input at key milestones, including:
  - Identifying alternatives to study during environmental review
  - Identifying a preferred alternative
- Highlight specific issues and trade-offs in the corridor

✓ ***Present recommendations for consideration to Elected Leadership Group.***





# Stakeholder Group

- **Open call for applications:** 2/20 – 3/6: Over 50 submissions!
- **Membership goals:**
  - ✓ 3-5 community representatives
  - ✓ Reflect the diversity of the corridor
  - ✓ Balance neighborhood and community interests from communities along the project corridor
- **Process:** ELG appoints second slate of members today (first slate approved 2/16) in order to send invitations for first meeting on 3/28.





# ***Purpose and Need Statement***

# What is a Purpose and Need Statement?

- Defines purpose of TDLE and why project is needed
- Used to guide decision-making during the alternatives analysis
- Helps evaluate alternatives leading to a preferred alternative
- Helps support state and federal environmental reviews
- Purpose and Need will continuously be refined based on comments received



A photograph of three men in a meeting. The man on the left is wearing a checkered shirt and glasses, looking at a document. The man in the middle is wearing a white t-shirt and a cap, smiling. The man on the right is wearing a white shirt, glasses, and a blue backpack, gesturing with his hands. The background shows a room with posters and a person on a phone.

*Early scoping period*

# *Early scoping*

## › Early scoping is an opportunity to:

- Learn about the **project background, timeline** and **how to stay informed and involved**
- Provide input on the **route, stations, potential alternatives, benefits and impacts**
- Provide input on the potential location of the **Operations and Maintenance Facility** in the south corridor

# Process and schedule

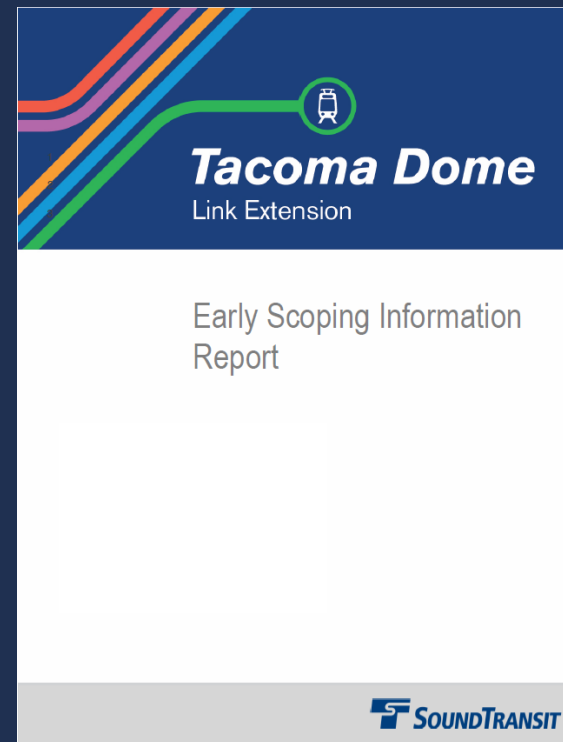
› Early scoping **comment period**: April 2 to May 3

› Ways to submit early scoping comments:

- Fill out a comment card at an open house
  - **Tacoma** - Tuesday, April 17
  - **Federal Way** - Wednesday, April 18
  - **Fife** - Tuesday, April 24
- Visit: **[tdlink.participate.online](https://tdlink.participate.online)** (active April 2)
- Email: **[tdlink@soundtransit.org](mailto:tdlink@soundtransit.org)**
- Call: 206-903-7118 (active April 2)
- Mail to: Tacoma Dome Link Extension  
c/o Steven Kennedy, 401 S. Jackson St. Seattle, WA 98104



# *Early Scoping Information Report*



# *Early scoping comments*

## › **Feedback received through early scoping will be:**

- Documented in the Early Scoping Summary Report
- Shared with the Elected Leadership Group and Stakeholder Group
- Discussed in greater detail at upcoming Station Area Workshops
- Used to help inform and shape alternatives that will be reviewed later this year



# Notifications

- › Postcard
- › Posters
- › Website
- › Email listserv
- › Station advertising
- › Social media
- › Press releases
- › Print and online ads
- › Notice to SEPA officials



# Tacoma Dome Link Extension and Operations & Maintenance Facility

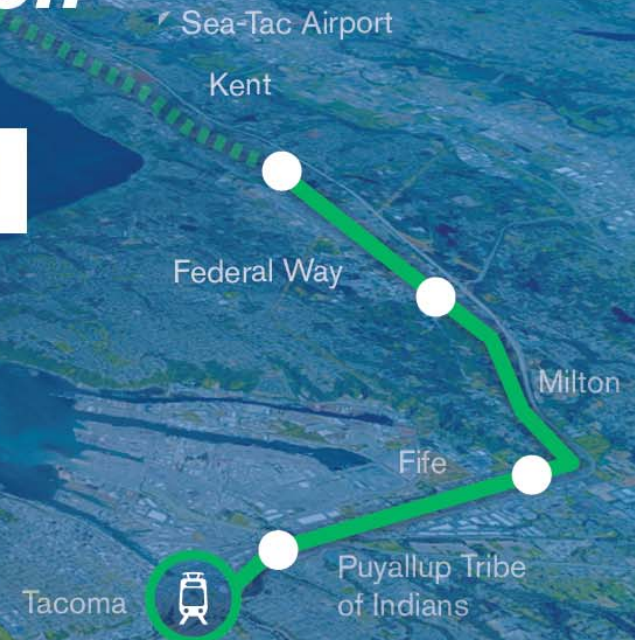
## Connecting light rail to the South Sound

Help shape the future of your regional light rail.  
Attend one of the following community open houses:

Tacoma // Tuesday, April 17, 6-8 p.m.  
Best Western Plus Tacoma Dome Hotel // 2611 E. E Street

Federal Way // Wednesday, April 18, 6-8 p.m.  
Todd Beamer High School // 35999 16th Ave. S.

Fife // Tuesday, April 24, 6-8 p.m.  
Fife Community Center // 2111 54th Ave. E.

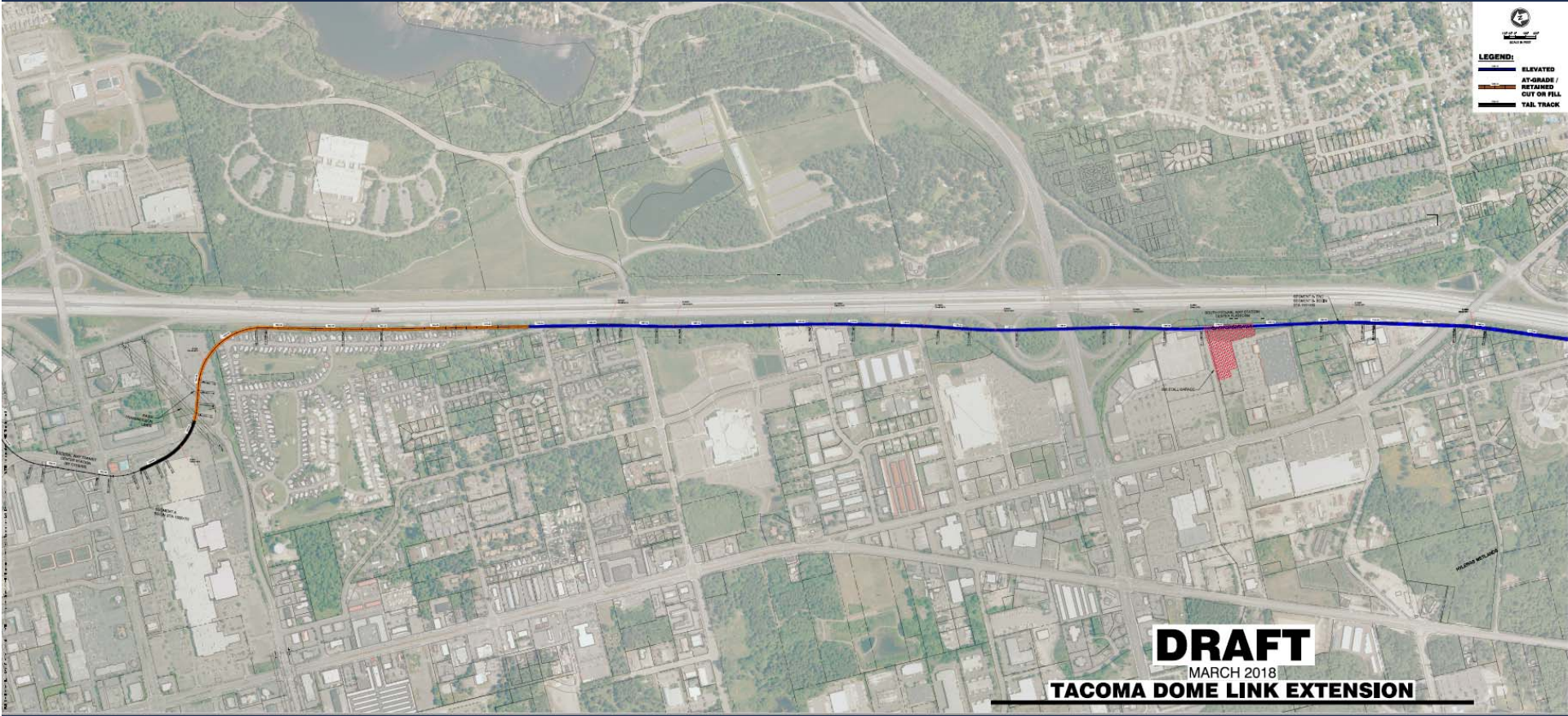




*Corridor video*



*Early scoping exercise*

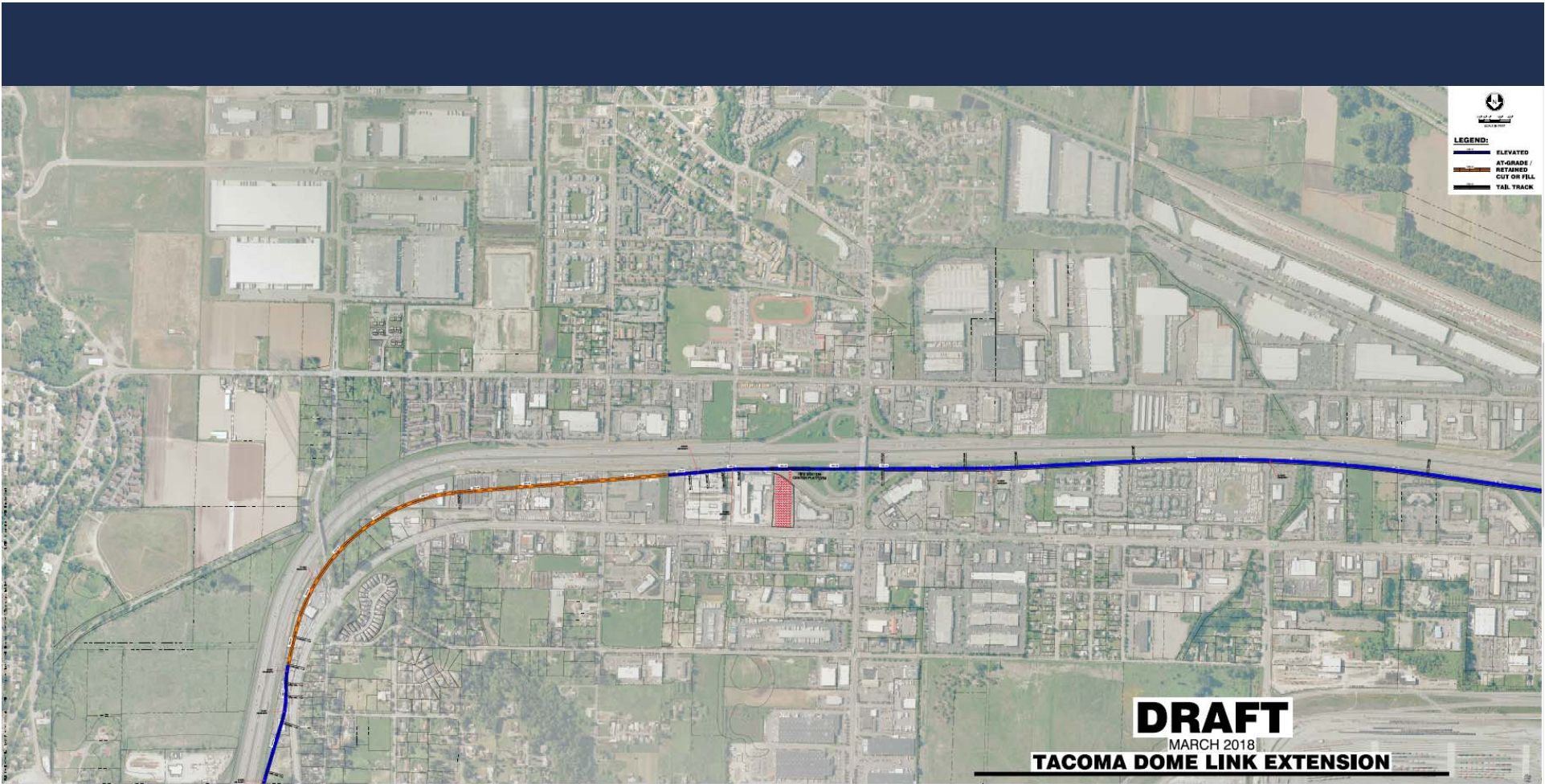




**LEGEND:**  
ELEVATED  
AT-GRADE /  
RETAINED  
CUT OR FILL  
TAIL TRACK

**DRAFT**  
MARCH 2018

**TACOMA DOME LINK EXTENSION**



  
**LEGEND:**  
— ELEVATED  
- - - AT-GRADE /  
RETAINED  
— CUT OR FILL  
— TAIL TRACK

**DRAFT**  
MARCH 2018  
**TACOMA DOME LINK EXTENSION**



**DRAFT**

MARCH 2018

**TACOMA DOME LINK EXTENSION**



# Next steps

## First Stakeholder Group meeting

- 3/28

## Next Interagency Group meeting

- 4/2 (first Mondays)

## Early scoping 4/2-5/3

- **Agency Meeting**
  - 4/17
- **Public Meetings**
  - 4/17 - Tacoma
  - 4/18 - Federal Way
  - 4/24 - Fife

## Station Area Workshops

- 4/25 - Federal Way
- 4/26 - Tacoma
- 5/1 - Fife

## Next ELG meeting

- 5/18
  - 9-11 a.m.
- **Corridor tour**
  - 11 a.m.-2 p.m.



# Questions?

[soundtransit.org/tdlink](https://soundtransit.org/tdlink) 

 **SOUNDTRANSIT**