



Tacoma Dome Link Extension

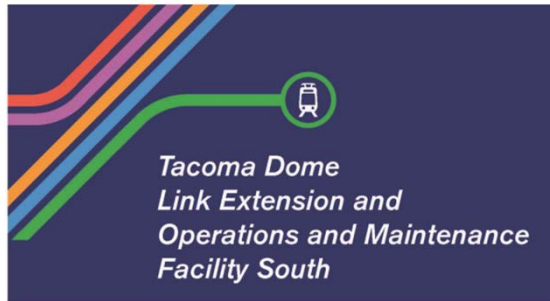
Elected Leadership Group Meeting #3 | 5.18.18

Agenda

- *What we heard during early scoping*
- *Alternatives development*
- *Next steps*
- *Adjourn to corridor tour (RSVP required)*



***What we heard
during early scoping***



Early Scoping Information Report

March 2018



Overview

- Early scoping: April 2 – May 3
- Notification via postcards, advertisements, posters, project website, email updates, press releases, social media, agency invitation letters, etc.
- 3 public meetings in April
- Online open house
- 1 agency meeting
- 3 Station Area Workshops and other outreach



Highlights

- 190+ people attended three public meetings
- 2,470+ visited online open house
- 16 agencies participated in agency meeting, several comment letters received
- 560+ total comments received via meetings and other methods
- All comments will be captured in *Early Scoping Summary Report*

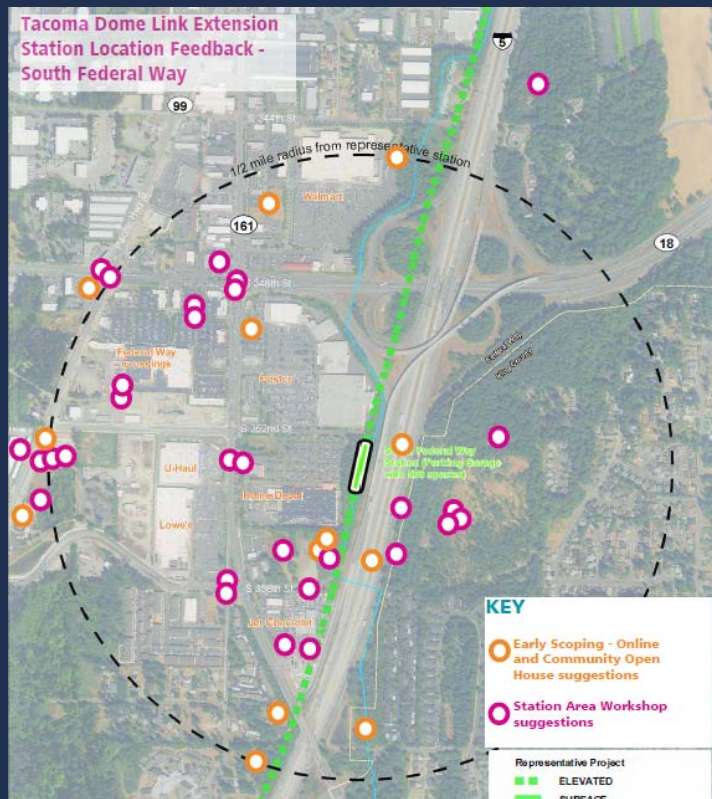


ELG reflections

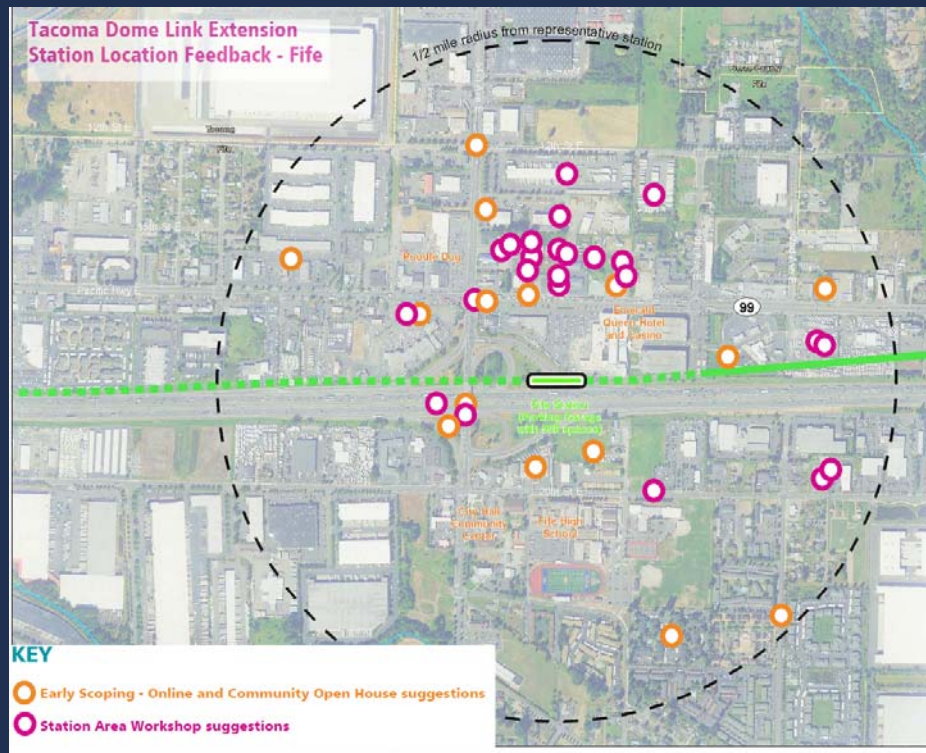
Public input

Station location suggestions

South Federal Way Station



Fife Station



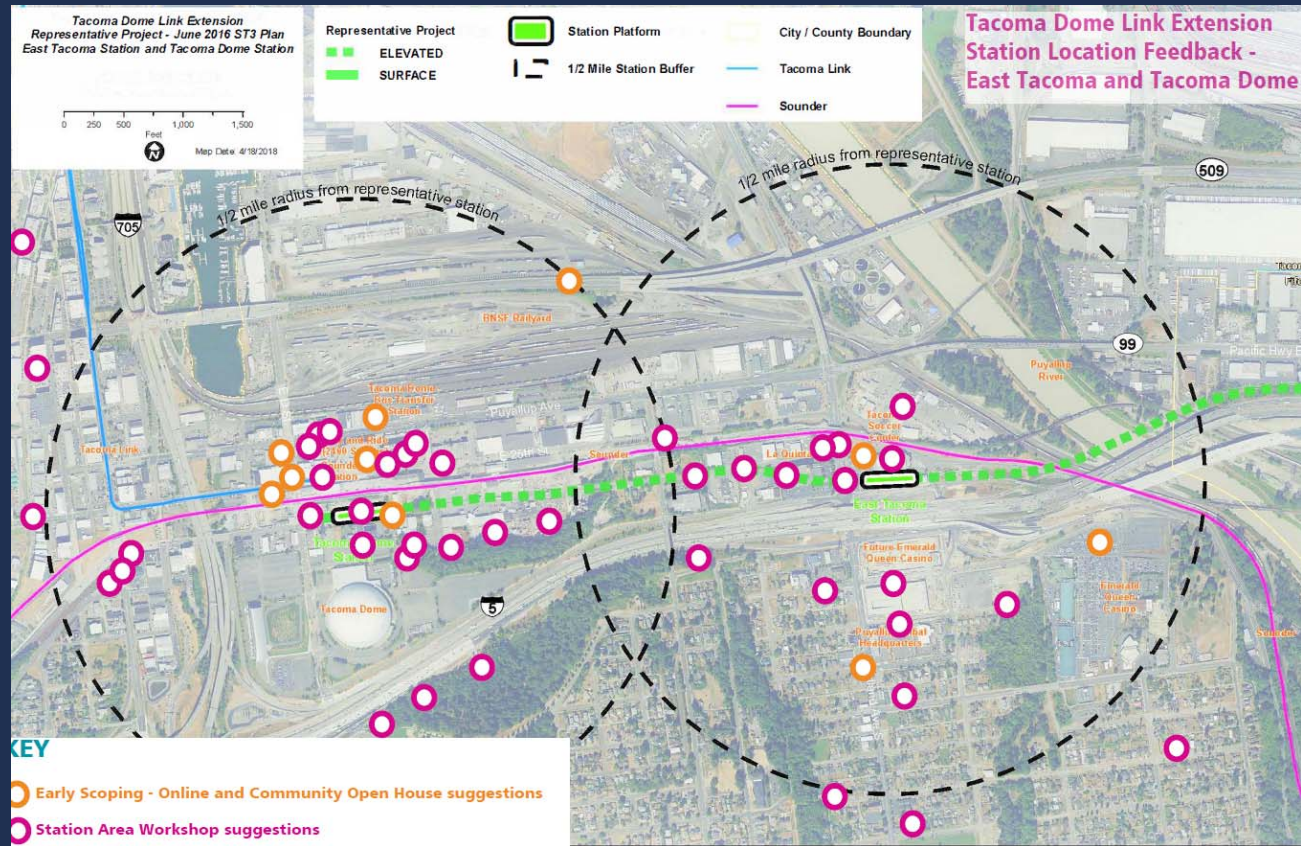
Draft images currently under review

Public input

Station location suggestions

Tacoma Dome and East Tacoma Stations

Draft image currently under review



Public input

Operations and Maintenance Facility South (OMF South)



- About 40 comments related to locations
- Some comments on noise, visual and community impacts
- Others saw job opportunities or potential integration with transit-oriented development (TOD)
- Preference for siting on industrially zoned or previously developed land

Other public comments



Multimodal connections

- Convenient transfers to buses or other modes at all stations
- Safe and accessible pedestrian and bicycle pathways in station areas

TOD

- Create TOD around station areas
- Site stations to maximize the ½ mile walkshed

Operations efficiency

- Reliable travel times
- Extended hours of operation

Other public comments



Community and environmental justice concerns

- Property values, displacement, and impacts to neighborhood or rural character
- Ensure low-income or minority populations are engaged in the process and impacts are avoided or minimized
- Affordable housing

General environmental concerns

- Effects on wetland and water resources, specifically Hylebos Creek
- Vegetation and tree removal

Other

- Frustration with ST3 car tab fees

Early scoping comments received

- From 11 agencies and the Puyallup Tribe of Indians
- Common themes:
 - TOD - facilitate future planning and development of urban centers
 - Integrated transit system supporting future population/employment growth in the region and local planning efforts

Tribe and federal agency highlights

Puyallup Tribe of Indians

- Explained cultural and environmental considerations
- Avoid individual tribal member trust properties
- Tribe will consider government owned tribal property
- Prefer Fife Station on the north side of SR 99 between 54th Avenue E and 59th Avenue E, then return to I-5
- Prefer East Tacoma Station near representative and not south of I-5
- Tacoma Dome Station on E 26th

EPA

- Include an SR 99 route alternative
- Place OMF South in existing commercial/paved areas
- Incorporate equity and health in evaluation

FHWA

- Maintain mobility, access, and safety between the street system and the interstate
- Consider combined Puyallup River Bridge replacement on SR 99

State and regional agency highlights

Dept. Natural Resources

- Discuss potential impacts and mitigation on state-owned aquatic lands

Ecology

- Recommendations for greenhouse gases and toxics cleanup (Asarco)

Washington State Dept. Of Transportation

- Coordinate compatibility with future needs and expansion, SR 167 Project
- Prefer OMF South location on west side of I-5, not crossing over I-5 twice

Port of Tacoma

- Avoid negative impacts to truck and rail access during construction and operation

Puget Sound Regional Council

- Incorporate TOD and regional strategies into the alternatives analysis

King County Metro

- South Federal Way Station - maximize multimodal access and TOD
- Consider the King County Metro-owned South Federal Way Park-and-Ride in station alternatives

City highlights

City of Federal Way

- Substantial input on FWLE resulted in an alignment on the west side of I-5. Looking to ensure that previous, current, and planned investments are not compromised.
- Safe and convenient access to station while not increasing congestion and minimizing loss of tax revenue
- OMF should consider City's vision and comprehensive plans

City of Fife and Fife City Council

- Preferred alignment follows 15th Street E or Pacific Highway into Fife and returns to the vicinity of I-5 near the Port of Tacoma Road
- Preferred Fife Station east of 54th Avenue E between Pacific Highway and 12th Street E

City of Tacoma

- System design should strongly support TOD
- Evaluate multiple options for connecting East Tacoma Station to Eastside community
- East Tacoma Station north of I-5 would need significant pedestrian and intermodal improvements
- Tacoma Dome Station evaluation should focus on integration with other transportation system

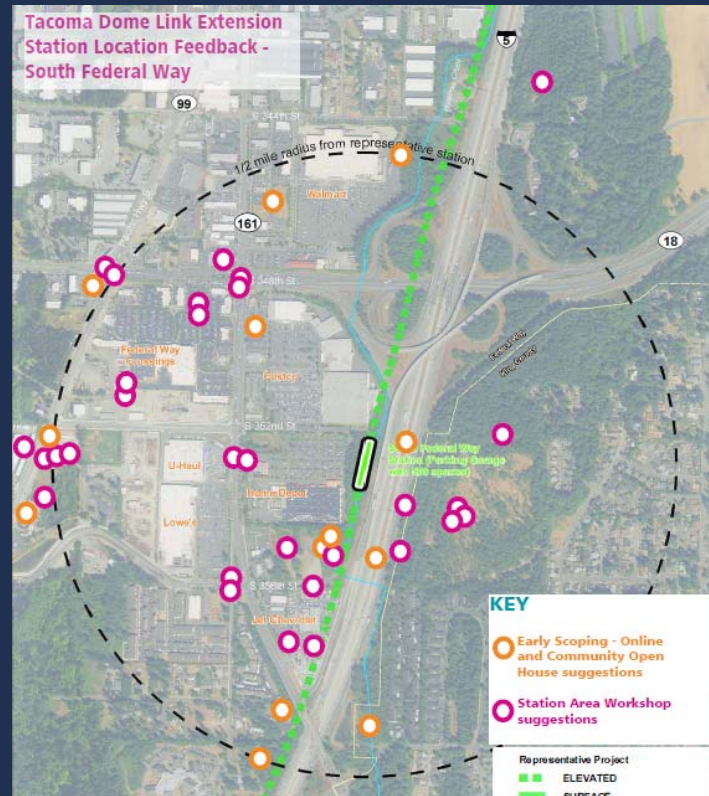
A photograph of three men in a meeting. The man on the left is wearing a checkered shirt and glasses, looking at a document. The man in the middle is wearing a white t-shirt and a cap, smiling. The man on the right is wearing a white shirt, glasses, and a blue backpack, gesturing with his hands. The background shows a room with posters and a whiteboard.

Comments and questions



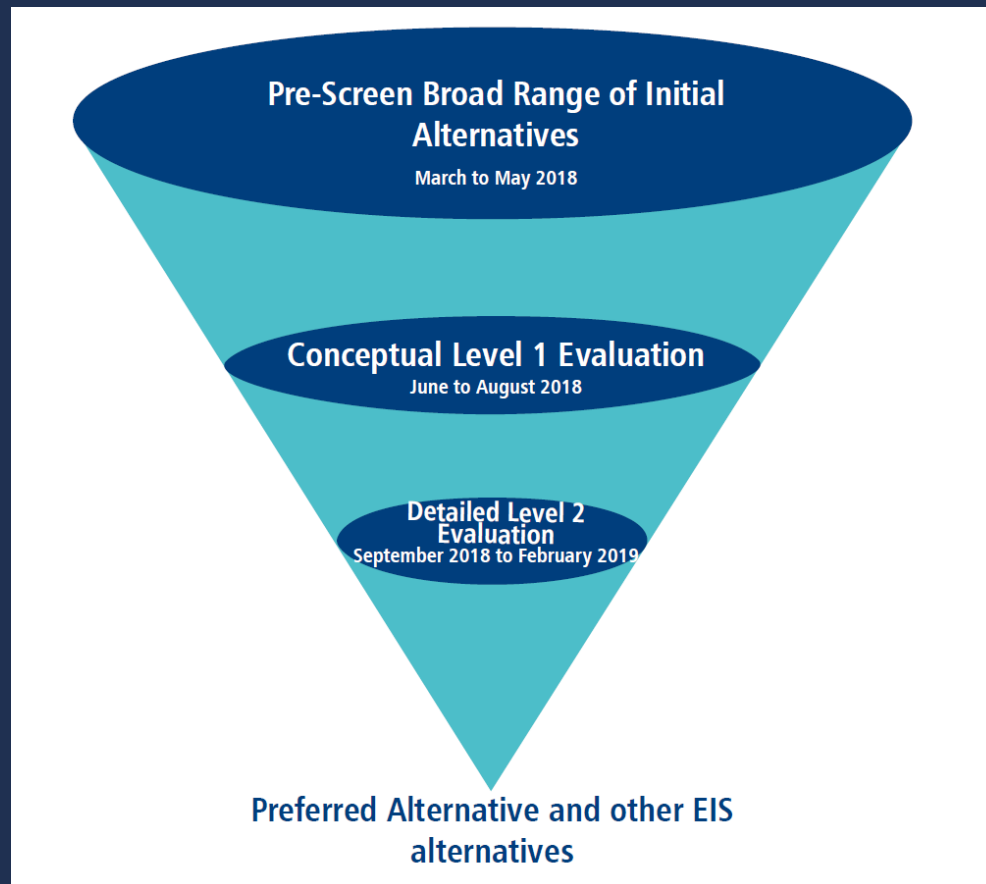
***Alternatives
development***

How do we evaluate a universe of ideas?



Draft image currently under review

Evaluation process



Evaluation criteria

- Incorporating input from the Interagency Group
- Tie back to Purpose and Need
- Need to be measurable, provide a way to compare one alternative to another
- Conceptual for Level 1, more detailed for Level 2 to further refine alternatives

A photograph of three men in a meeting. The man on the left is wearing a checkered shirt and glasses, looking at a document. The man in the middle is wearing a white t-shirt and a cap, smiling. The man on the right is wearing a white shirt, glasses, and a blue backpack, gesturing with his hands. The background shows a room with posters and a whiteboard.

Comments and questions

Next steps

Next Stakeholder Group meeting

- 5/22

Interagency group meetings

- 6/4
- Continue on first Mondays

Next ELG meetings

- 7/13
- 9/12

Both 9-11 a.m. at the Fabulich Center



Questions?

soundtransit.org/tdlink 

 **SOUNDTRANSIT**