



Tacoma Dome Link Extension

Stakeholder Group Meeting #4 | 9.27.18

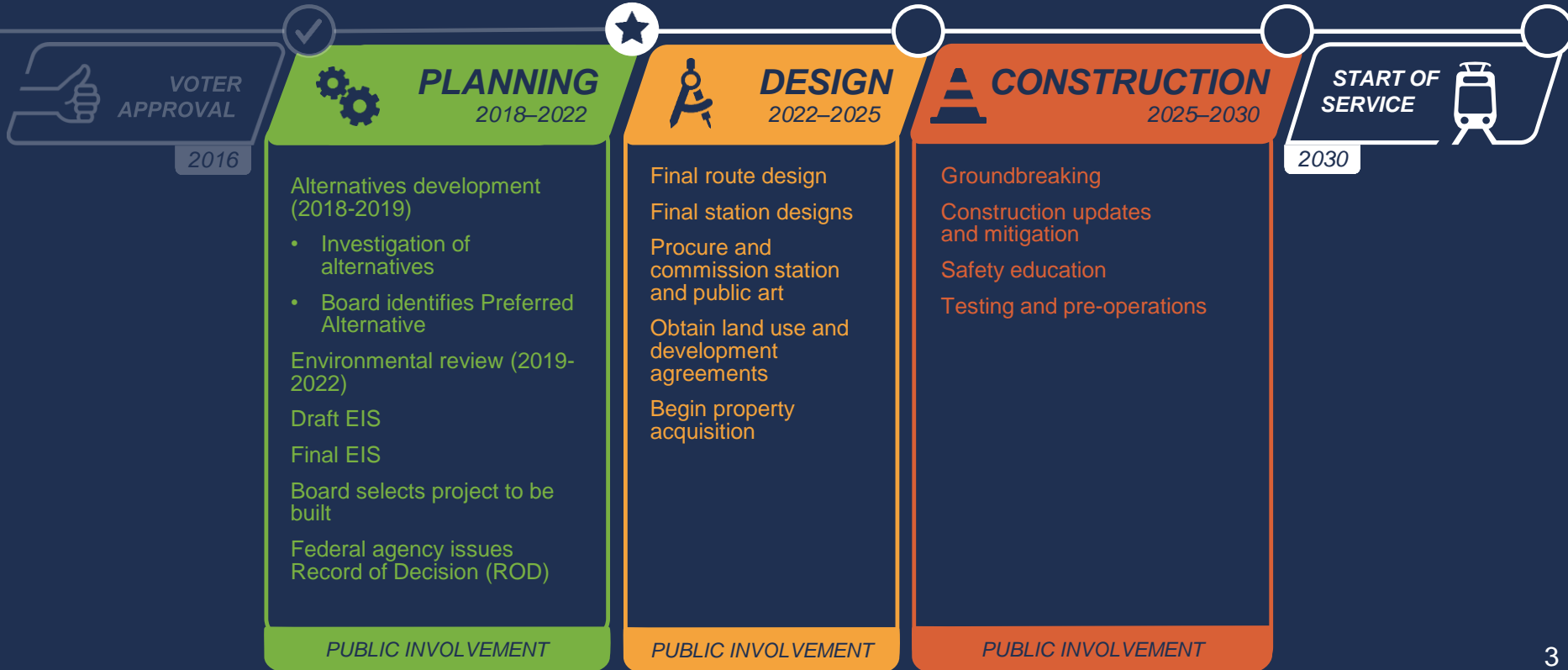
Agenda

- *Process overview*
- *What we heard during September outreach*
- *Feedback for the ELG*
- *Next steps*

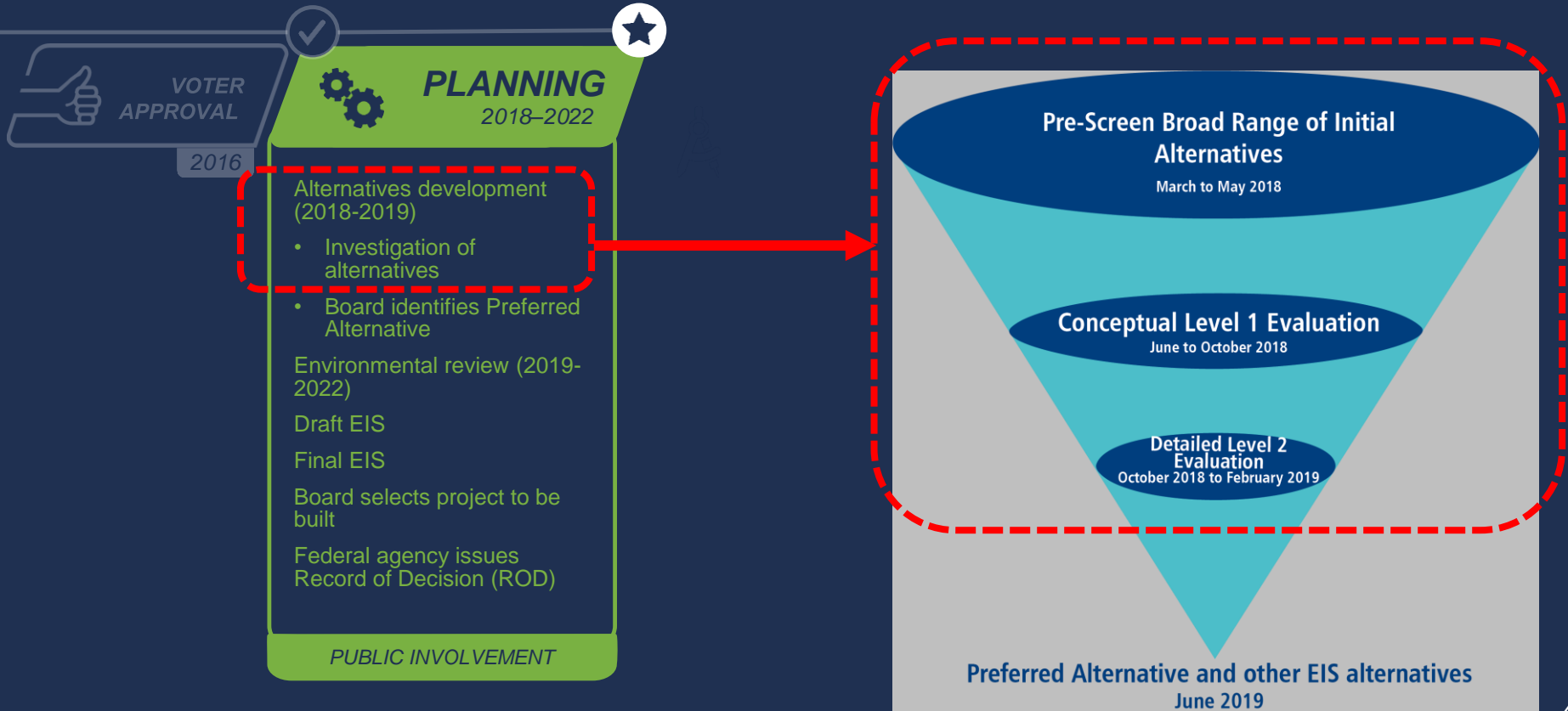


Process overview

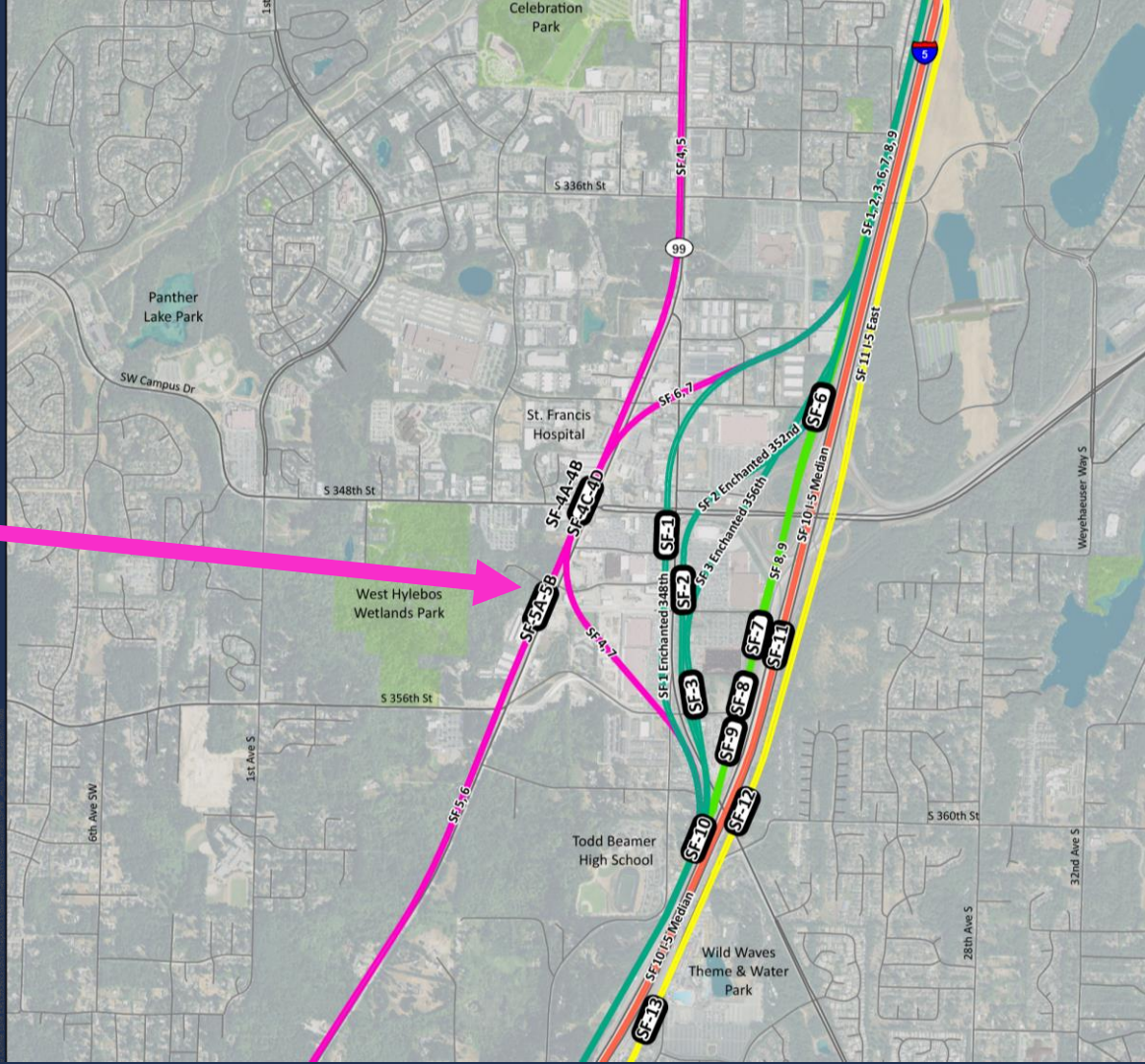
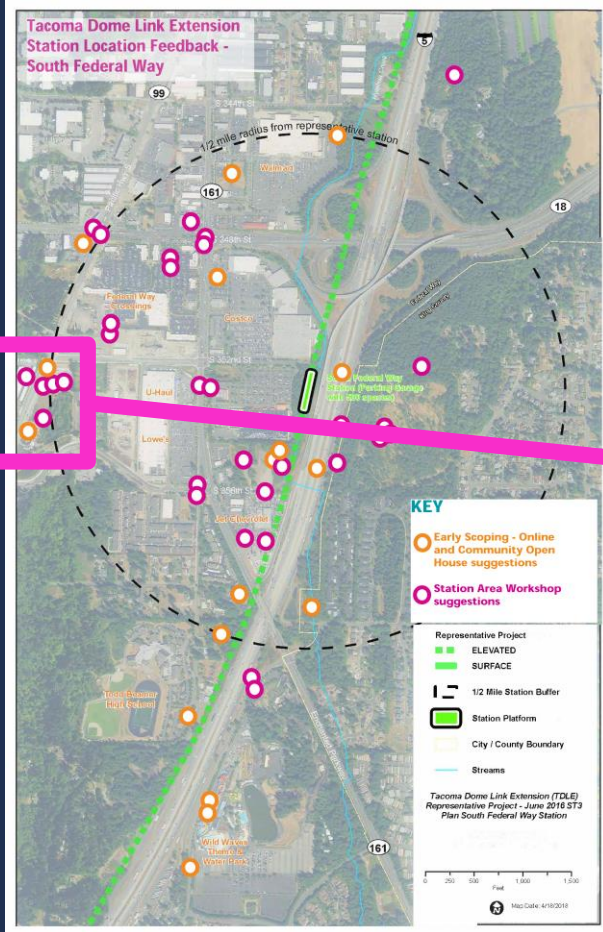
Project timeline and milestones



Alternatives development process



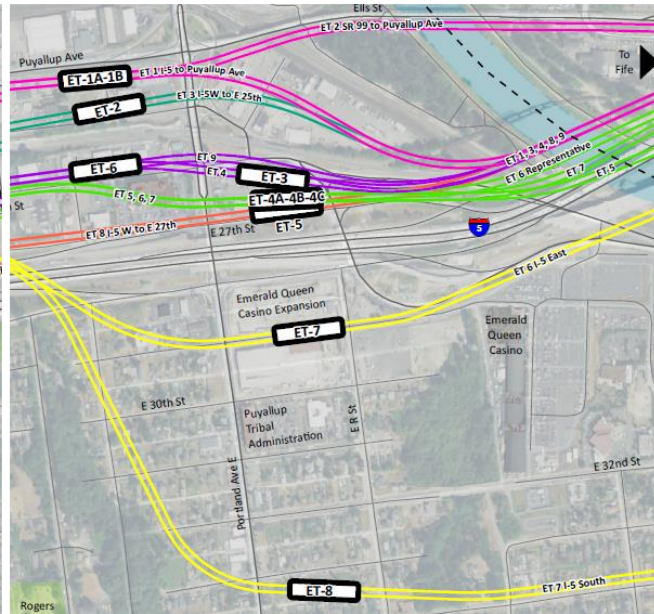
South Federal Way



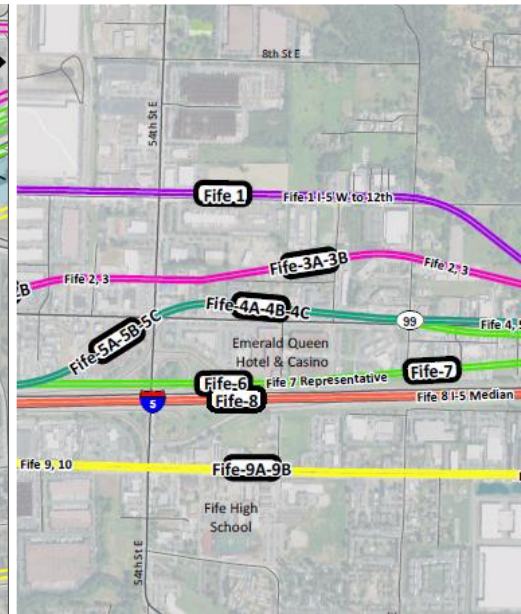
Tacoma Dome



East Tacoma



Fife



Final evaluation criteria categories



➤ *Effective transportation solutions*



➤ *Land use and economic development and Transit-Oriented Development (TOD)*



➤ *Preserve the environment*



➤ *Equitable mobility*



➤ *Financially sustainable and constructible*

Alternatives development next steps

What route and station alternatives should move into Level 2?

Next ELG
meeting

- **10/12** –ELG makes recommendation to ST Board

Sound
Transit Board

Begin
Level 2
evaluation

A photograph of a light rail train at a station platform. The train is white with blue and green decorative graphics. Several people are walking on the platform, some towards the train. A blue circular sign with a white train icon is visible in the background. The overall scene is outdoors and appears to be a public transit station.

***What we heard
during September
outreach***

SOUNDTRANSIT

Light rail is coming to the South Sound

Help narrow options for light rail routes and station locations

Join us at an open house or online

Federal Way // Tuesday, Sept. 11, 6-8 p.m.
Federal Way Performing Arts and Event Center // 31510 Pete von Reichbauer Way S.

Fife // Wednesday, Sept. 12, 6-8 p.m.
Fife High School // 5616 20th St. E.

Tacoma // Wednesday, Sept. 19, 6-8 p.m.
Best Western Plus Tacoma Dome Hotel // 2611 E. E St.

Tacoma Dome Link Extension and Operations & Maintenance Facility: South

SOUNDTRANSIT

Light rail is coming to the South Sound

Help narrow options for light rail routes and station locations

Join us at an open house or online

Federal Way
Tuesday, Sept. 11
6-8 p.m.
Federal Way Performing Arts and Events Center

Fife
Wednesday, Sept. 12
6-8 p.m.
Fife High School

Tacoma
Wednesday, Sept. 19
6-8 p.m.
Best Western Plus Tacoma Dome Hotel

Tacoma Dome Link Extension and Operations & Maintenance Facility

Comment online

tdlink.participate.online

Submit your comments by Sept. 21

Other: soundtransit.org/public / Email: tdlink@soundtransit.org / Phone: 206-244-5423
 Page Information: version: 080 program: 0806 / 1490-020-0206
 北極星 新聞 廣告: 180.02.08 9:44:12 / 1490-020-0206
 To request accommodations for accessibility, availability or information in alternate formats, call 1-800-301-4807(TTY Relay 711) or email accessibility@soundtransit.org.

Light rail is coming to the South Sound

Tacoma Dome Link Extension

SOUNDTRANSIT

Shape future transit

Overview

- Outreach Period: 9/1 – 9/21
- Notification via postcards, advertisements, posters, project website, email updates, press releases, social media, agency invitation letters
- 3 public meetings
- Online open house (3 weeks)



Highlights

- **175+** people attended three public meetings
- **2,800+** visited online open house
- **700+** total comments received via meetings and survey
- Hundreds of c and shares on Facebook and Twitter
- All comments will be captured in an outreach summary report



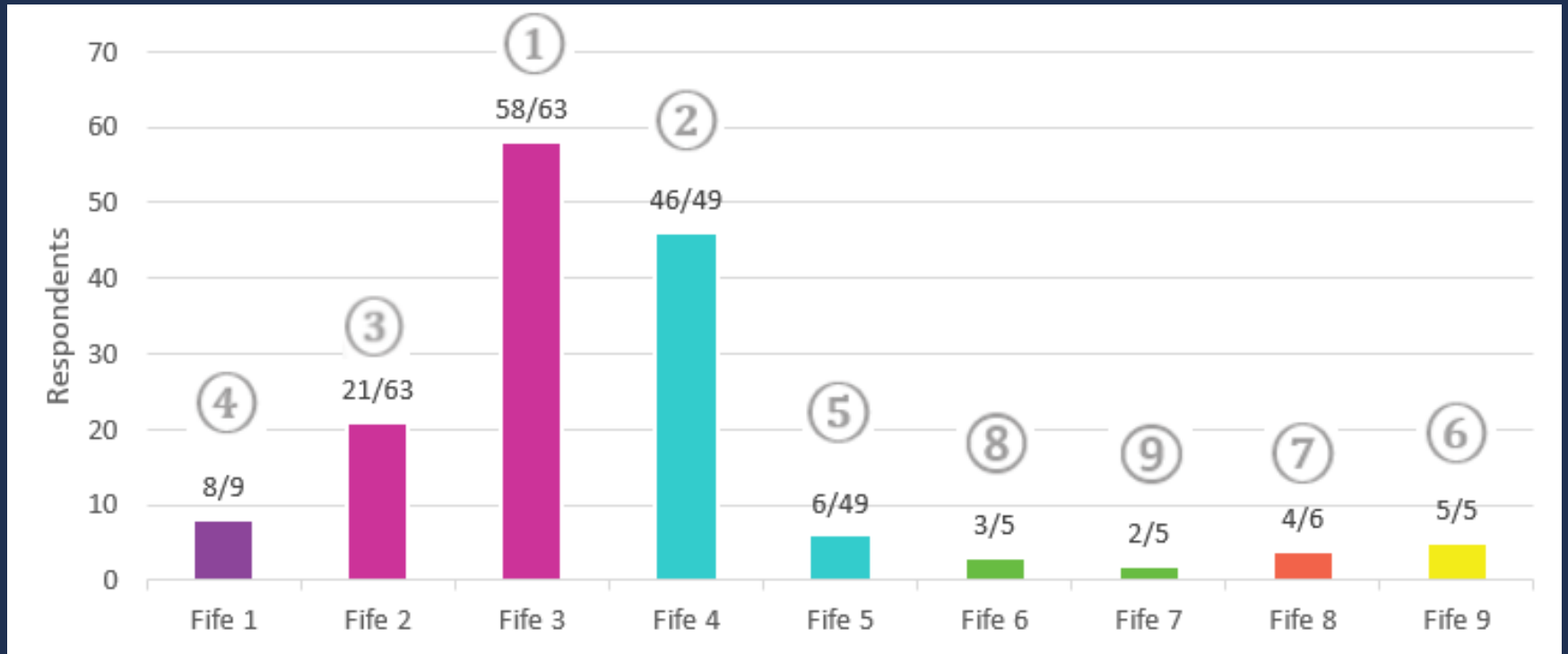
Key themes - Overall

- Easy connections
- Parking concerns
- Interest in housing and businesses around stations
- Congestion concerns
- Interest in better station access with multiple modes

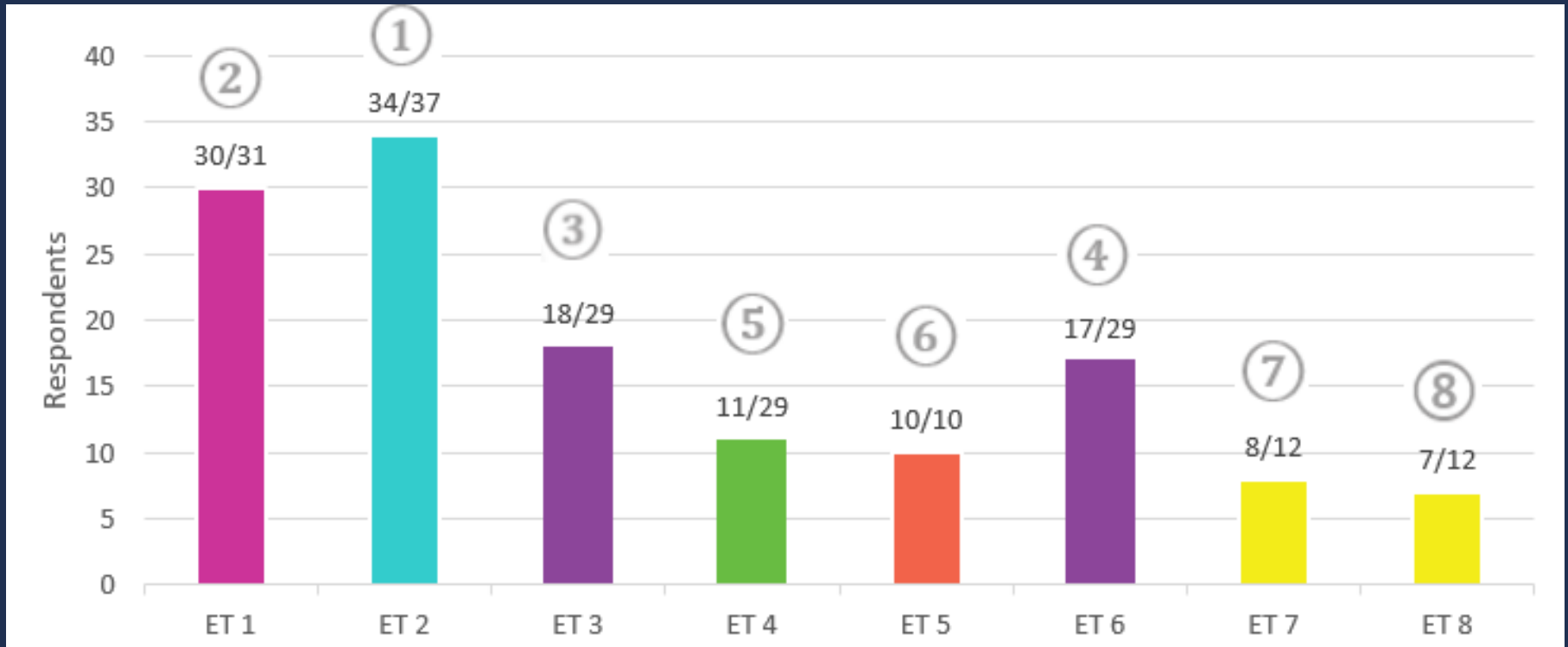
Station preferences – South Federal Way



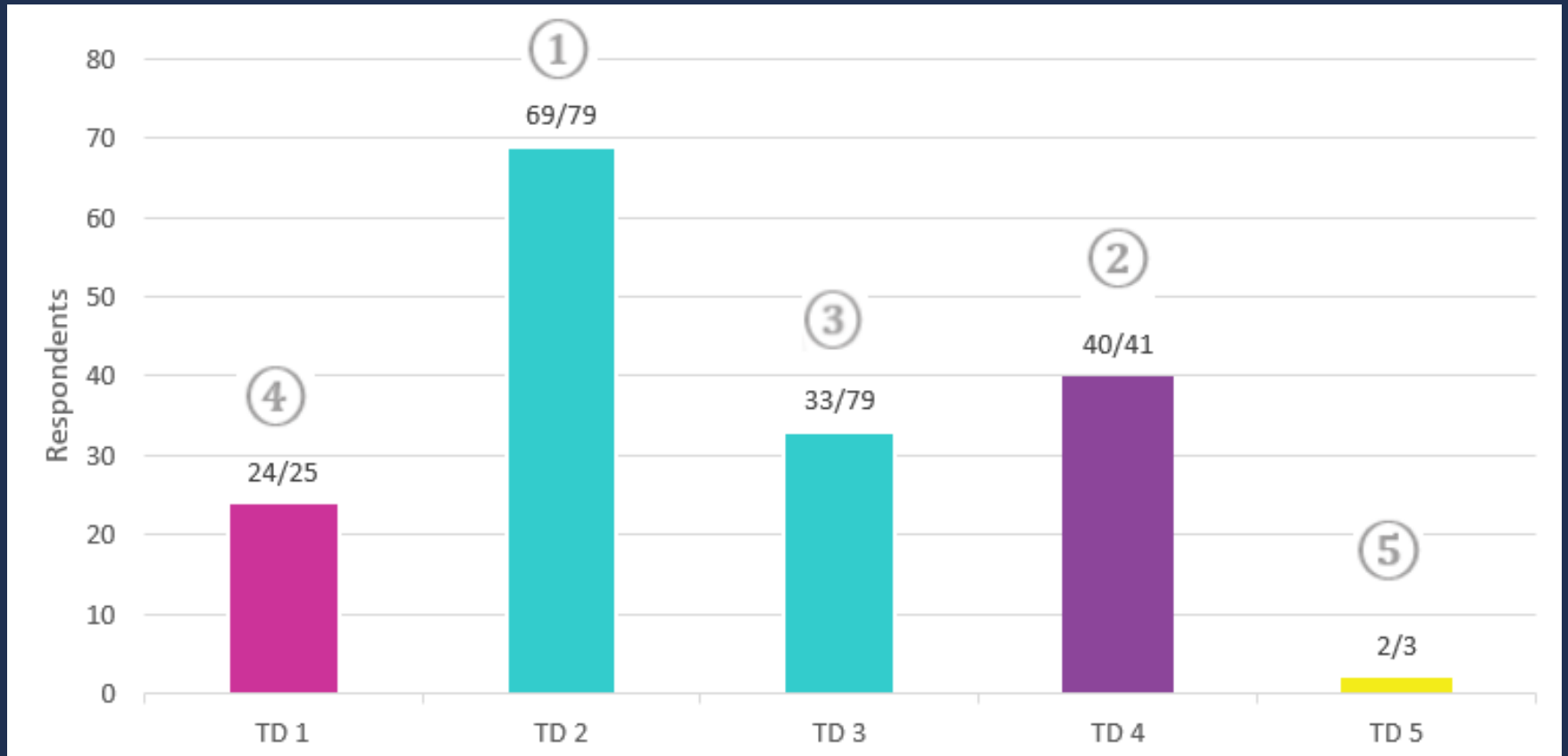
Station preferences – Fife



Station preferences – East Tacoma



Station preferences – Tacoma Dome



A photograph of three men in a meeting or workshop setting. The man on the left is wearing a checkered shirt and glasses, looking towards the other two. The man in the center is wearing a white t-shirt, a cap, and has a beard, smiling. The man on the right is wearing a white shirt, glasses, and a blue backpack, gesturing with his hands. The background shows a room with posters and a whiteboard.

Comments and questions

An aerial photograph of a city street grid is shown, overlaid with various planning elements. A yellow grid of lines is drawn across the map. Several sticky notes in blue, yellow, purple, and green are placed on the map. A red cup is visible in the bottom center. A legend in the bottom right corner identifies symbols for '2022 Representation Project', 'ELECTED SENATOR', '2022 State Representative', 'City County Boundary', and 'Neighborhood'. The text '2022 Representation Project' is also visible in the legend. The text 'Senators State and Congress 2022 Representation Project June 2013 2017 Map' is also visible in the legend. The text '750 Miles' is also visible in the legend. The text '© 2013 Esri' is also visible in the legend.

Feedback for the Elected Leadership Group

Your feedback and reasoning – language ideas

More promising	More challenging
Faster travel/shorter distance	Longer travel/longer distance
Easy connections to station	Difficult connections to station
Supports housing and business development around station area	Housing and business development around station area is less likely
Preserves the environment	More environmental impacts
Financially sustainable and constructible project	Less financially sustainable and constructible project
High level of public interest	Low level of public interest

Activity wrap up



Next steps

Next ELG meeting

- **10/12** –ELG makes recommendation to ST Board

Station Area Workshops

- **We encourage you to attend!**
- **10/25**
 - **South Federal Way and Fife station areas**
- **11/1**
 - **East Tacoma and Tacoma Dome station areas**

Next SG meeting

- **12/4** -- Location TBD



Questions?

soundtransit.org/tdlink 

