

# ***East Link Extension Update***

*Motion Nos. M2024-24 through M2024-28 & Resolution No. R2024-13*

*System Expansion Committee*

*5/09/2024*

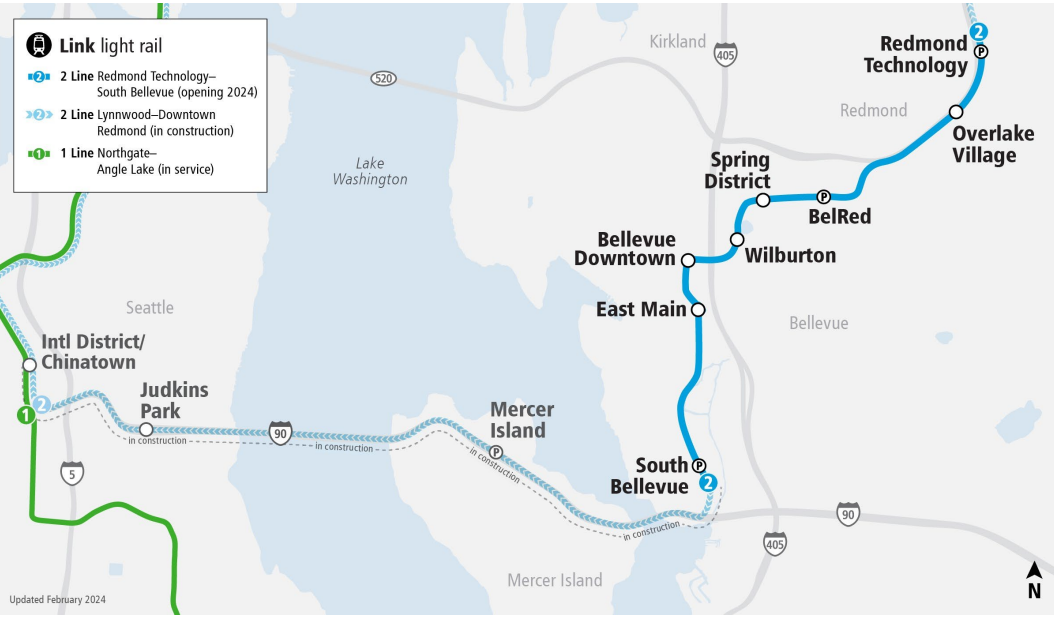


# Why are we here

- Update on East Link Project.
- Inform today's consideration of five contract modifications and one budget amendment.



# East Link Extension



# 2 Line – Successfully opened for service

- 2 stations in Redmond and 6 stations serving Bellevue now open.
- Saturday April 27, 2024.



# Financial Snapshot

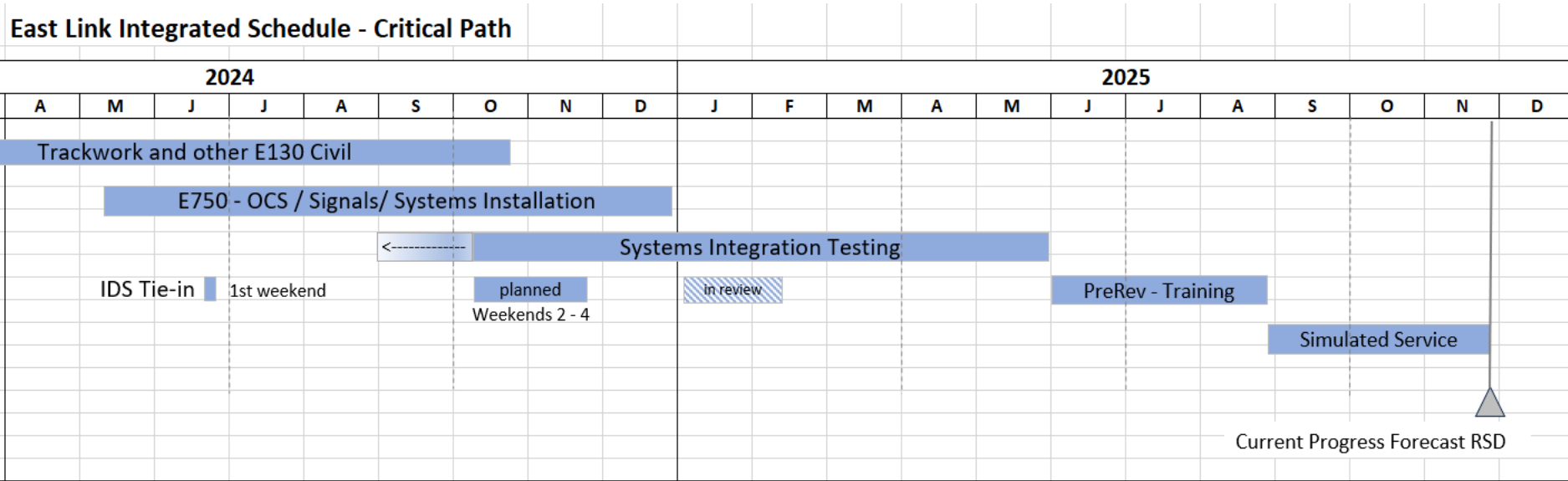
<b>Project Budget</b>	<b>\$3.677 B</b>
Committed	\$3.510 B
Incurred	\$3.429 B

- Year of Expenditure \$
- Financials and progress as of March 2024

- 98.3% complete
- Project baselined in April 2015
- Open for service, progress schedule forecast: November 2025

# Schedule to Complete – Critical Path

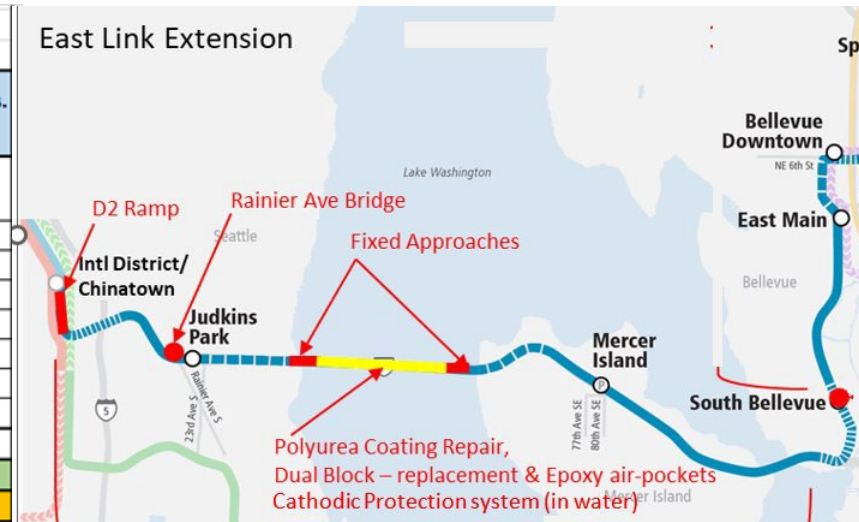
- Further delay in construction could impact Q4 2025 Revenue Service.
- Coordinating with civil contractors to sustain momentum and identify opportunity to advance systems work concurrently.



# East Link (I-90 Corridor) - Reconstruction

- Nylon rail fastener bolt insert replacement – complete.
- Concrete track plinth demolition at 95% & reconstruction at 80% complete.
- Forecasted track plinths completion slipped from July to August 2024 still within 2025 opening window.
- Dual Blocks Replacement (2% of total damaged, spalled, etc.) on-going on Floating Bridge.

Field Data Tracking						
	Date	5/6/2024				
Location	Sum of Total Track Feet	As-PLANNED - FIELD	% Complete PLANNED	As-Built	% Complete AS-BUILT	% Actual vs. Planned
IDS	767.47	7,164.50	90%	6,406.50	80%	89%
D2	7,196.11					
JPS	4,009.01	3,833.00	96%	3,485.00	87%	91%
MBT	7,029.08	7,906.50	112%	7,036.00	100%	89%
WA	4,722.28	1,651.00	35%	1,512.00	32%	92%
EA	4,630.87	1,928.00	42%	1,593.00	34%	83%
MIT	5,959.02	6,591.50	111%	5,965.00	100%	90%
MIS	2,159.72	2,592.50	120%	2,152.00	100%	83%
ECB	5,561.80	6,257.50	113%	5,566.50	100%	89%
<b>Total</b>	<b>42,035.36</b>	<b>37,924.50</b>	<b>90%</b>	<b>33,716.00</b>	<b>80%</b>	<b>89%</b>
<b>% (Actual VS Project Total)</b>		<b>80%</b>				
<b>% (Actual VS Planned)</b>		<b>89%</b>				

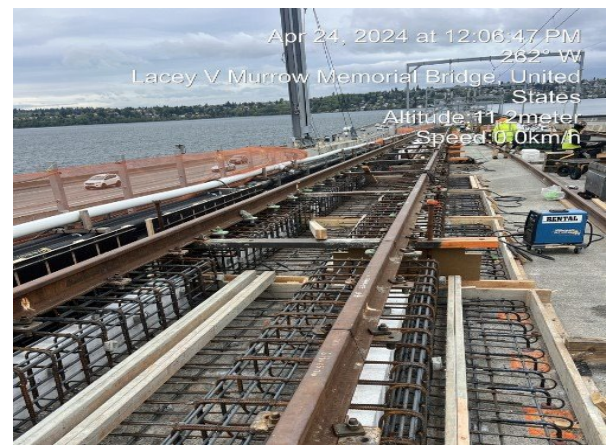


# East Link (I-90 Corridor)

## Known Risks & Mitigations

- Critical or Near-Critical Path work ahead:
  - Repair polyurea coating on Floating Bridge, plan to complete in Summer (weather dependent).
  - Power and systems tie-in work at International District / Chinatown Station to connect 1 Line.
  - Achieving auto-mode in the Cathodic Protection System for the floating bridge.
  - Replacing some dual blocks on floating bridge.
- Ongoing discussions with contractor and staff to manage work to meet or improve current schedule.
- Further schedule slippage could impact Q4 2025 Revenue Service Date.

In progress (top); Completed track on East Channel Bridge (below)



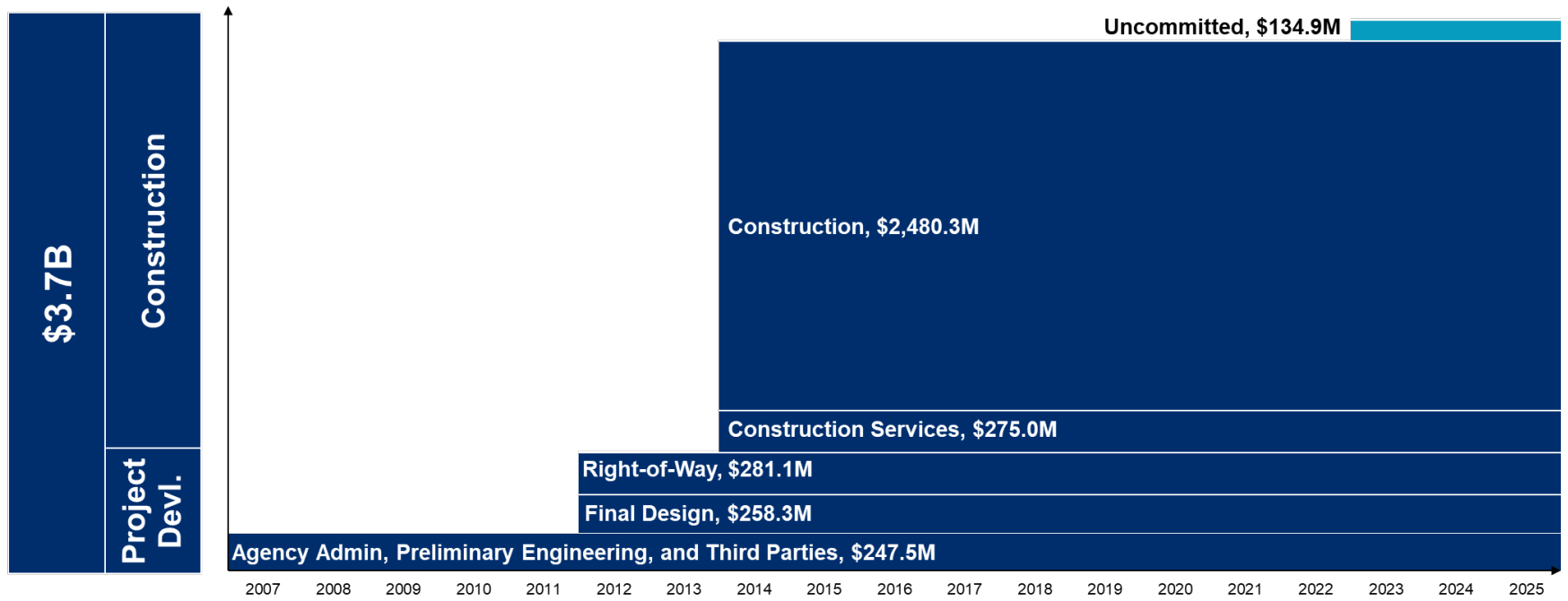


# *Today's actions*

- M2024-24: Increase Contingency for Design Services during construction with WSP USA, Inc. for the East Link Extension Seattle to South Bellevue Segment.
- R2024-13: East Link Extension Phase Budget Transfer.
- M2024-25: Contract Modification with Mass Electric Construction Company for the East Link Extensions Systems Construction Contract.
- M2024-26: Contract Modification with Northwest Transit Systems Partners for the East Link Extensions Systems Construction Management Consultant Services.
- M2024-27: Contract Modification with Kiewit-Hoffman, East Link Constructors, for the East Link Extension Seattle to South Bellevue Segment.
- M2024-28: Contract Modification with Jacobs Project Management Company for Construction Management Services for the East Link Extension Seattle to South Bellevue Segment.

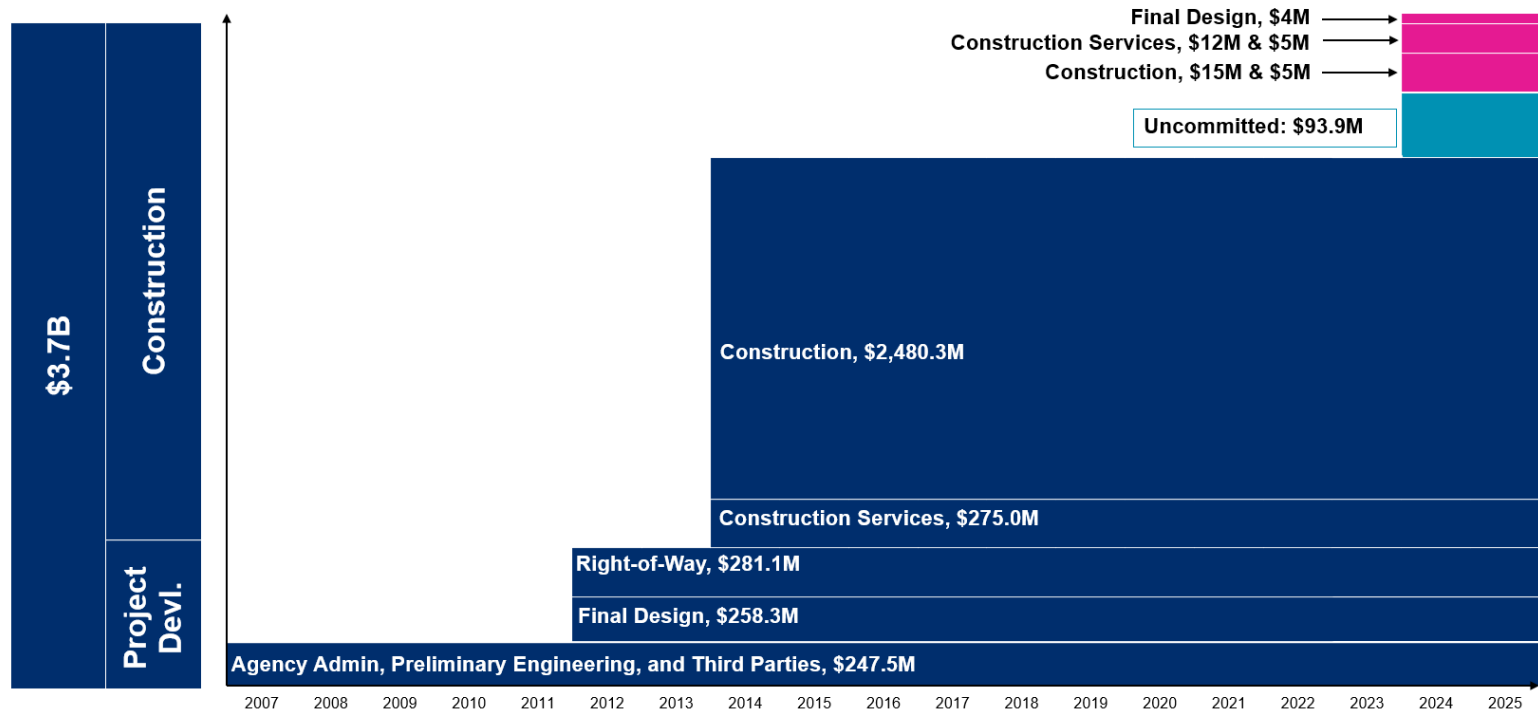
# EAST LINK EXTENSION: Baseline Budget \$3.68B

ALLOCATION \$ COMMITMENTS



# EAST LINK EXTENSION: Board approves five motions for the following commitments.

## ALLOCATION \$ COMMITMENTS



*Thank you.*



 [soundtransit.org](https://www.soundtransit.org)

