



Passenger Impact Portfolio Plan

Rider Experience and Operations Committee

04/04/24



Why we are here

Upcoming Work Requiring Service Disruption

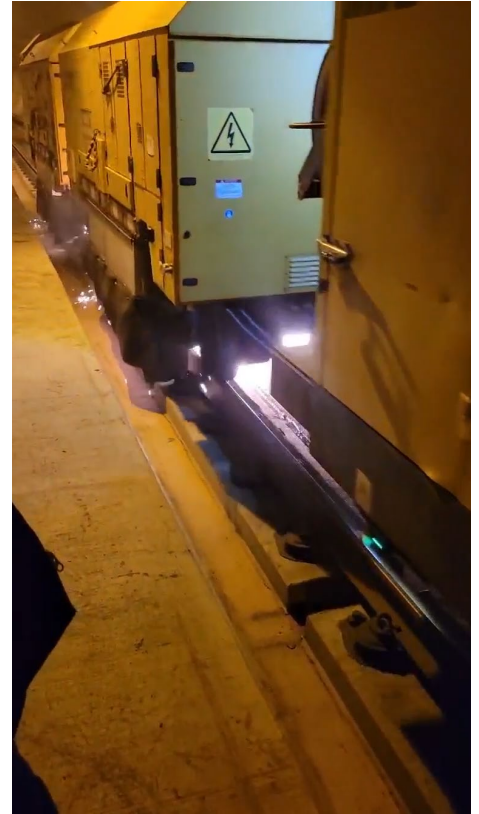
- Spring Rail Grinding (Q2 2024)
- Federal Way Electrical System Tie-In (Q2 2024)
- Start 2 Line Signal System Testing (Q2 2024)

The purpose of this presentation is for information only. No Board action is expected today.

Work Planned for Q2 2024

Spring Rail Grinding

- **Why this is necessary:** Preventative rail maintenance to increase long term rail health.
- **Passenger benefit:** Prevent bigger service impacts if not addressed.
- **What is the service impact:** 12 nights from 4/2 to 4/17, 20-min headways starting at 11pm to end of service (5 minutes longer than usual).



Work Planned for Q2 2024

Federal Way Link Extension Power Tie-In to Angle Lake

- **Why this is necessary:** Tie Federal Way Link Extension train power into Angle Lake Station prior to Lynnwood Link simulated service.
- **Passenger benefit:** Deliver Federal Way Link Extension on time with fewer impacts to new passengers.
- **What is the impact:** 6 weeks single tracking with shuttle between SeaTac and Angle Lake, and 3 weekend partial station closures. Currently aiming to start in late April 2024.



Work Planned for Q2 2024

Start 2 Line Signal Testing in Downtown Tunnel

- **Why this is necessary:** Tie in 2 Line signal system to downtown tunnel and testing with live trainsets.
- **Passenger benefit:** 2 Line operations start safely, on schedule.
- **What is the impact:** June 1 & 2 downtown tunnel full closure with bus bridging SoDo to Capitol Hill.



Next Steps

- Continuing to develop and implement process improvements in response. Still on track to deliver next steps for improvements in June.
- Continue to work on 2024 events and upcoming projects.



Thank you.



 [soundtransit.org](https://www.soundtransit.org)

