



# **University Link Extension Briefing**

Sound Transit Board Meeting

January 28, 2016

**SOUNDTRANSIT**



- **3.15-mile extension of Central Link**

- twin bored tunnels
- Capitol Hill Station
- UW Station and crossover

- **Schedule:**

- Final Design: 2007-2010
- Construction: 2009-2016
- Pre-revenue testing: 3 months
- ~~Open for service: 1Q 2016~~

**March 19, 2016**

- **Project budget: \$1.948 billion**  
*(including finance cost)*



| Financial Snapshot | Millions |
|--------------------|----------|
| Project Budget     | \$1,948  |
| Committed          | \$1,681  |
| Incurred           | \$1,608  |

Financials as of November 2015

- Awarded construction contracts now approaching \$982 million
- Major active construction work on Capitol Hill Station, Rail and Systems, and the Maintenance of Way building
- Estimated Final Cost (EFC) trending under Project Budget by \$150M+

# Schedule Snapshot

- Presently, Project has approaching 99% complete overall
- Sound Transit's Revenue Service Milestone: 1Q 2016



# Implementation

- **Four major heavy civil contracts**
  - I-5 Undercrossing Pits
  - UW to Capitol Hill
  - Capitol Hill to Pine Street
  - Yard Expansion
- **Two major station finishes contracts**
  - UW Station (GC/CM)
  - Capitol Hill Station (GC/CM)
- **Three major systems/track contracts**
  - U-Link Systems and Track (GC/CM)
  - Network
  - Vibration/Wheel Flat Monitoring
- **Maintenance of Way Building**
- **Procurement of light rail vehicles**

- Complete
- Active
- Pending

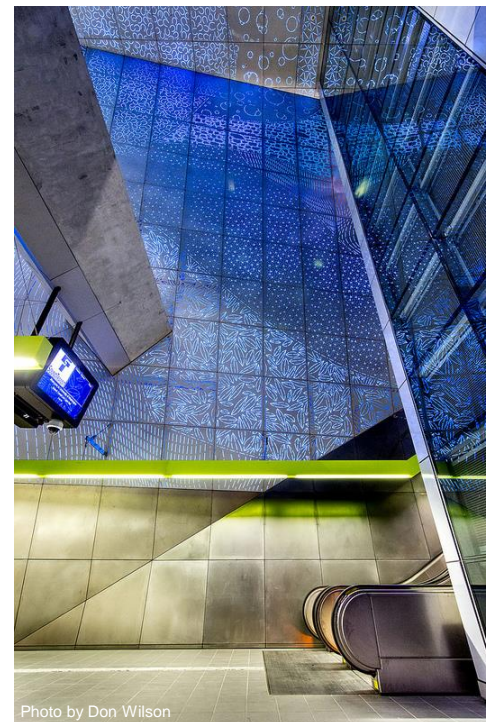
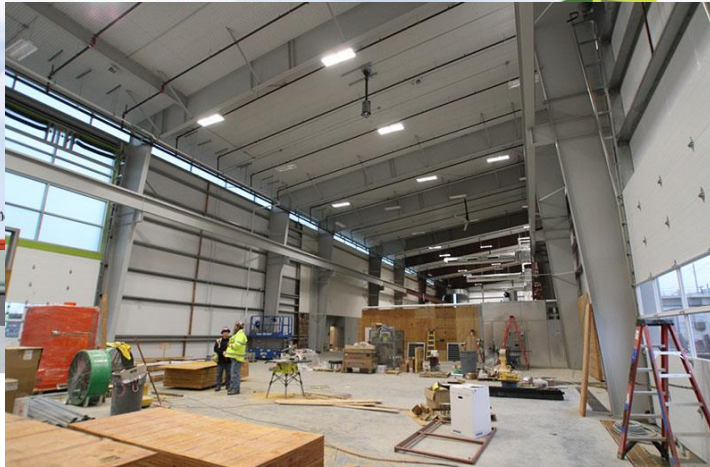
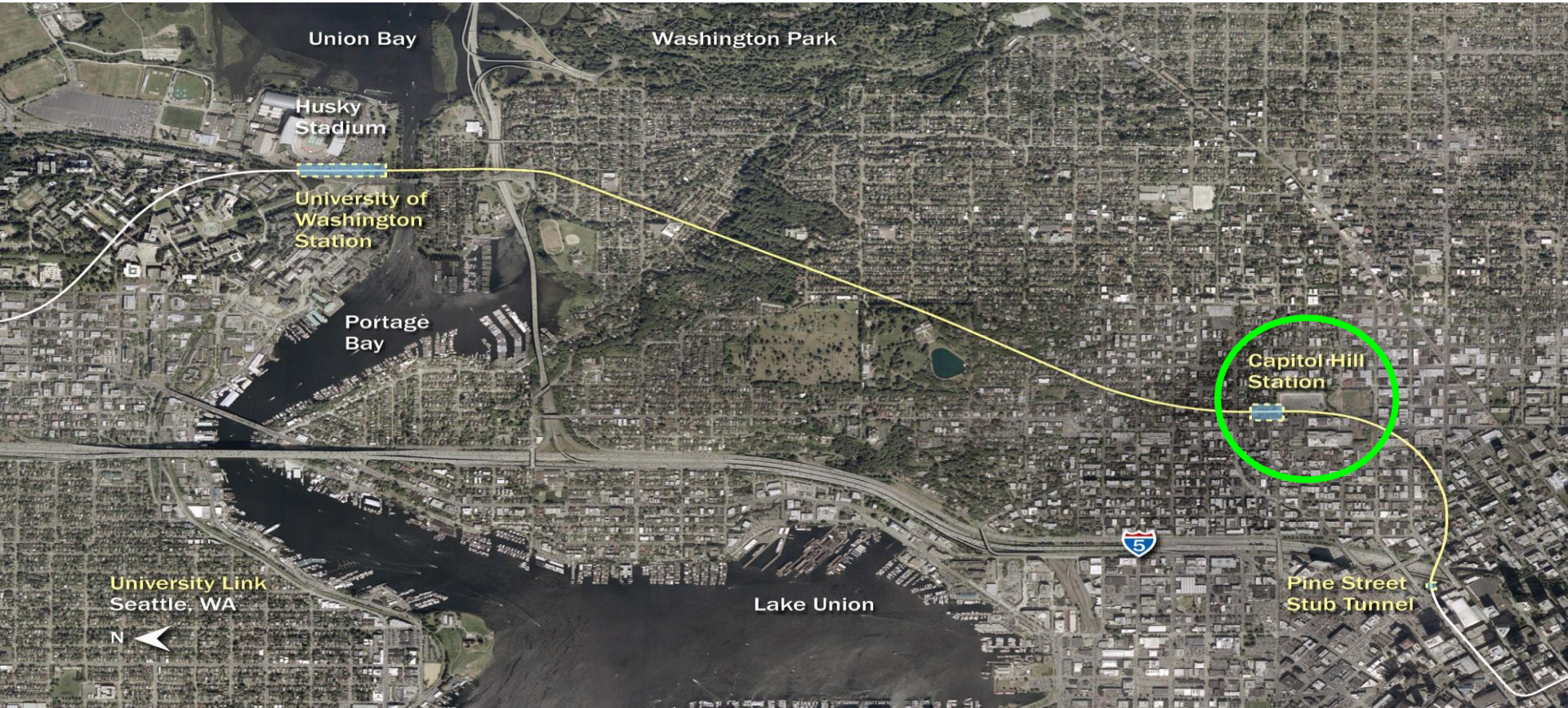


Photo by Don Wilson

# Maintenance of Way Building

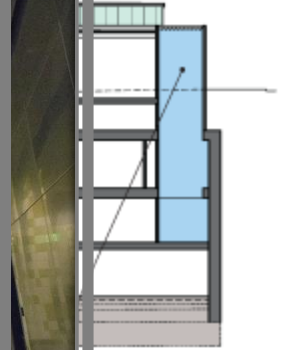


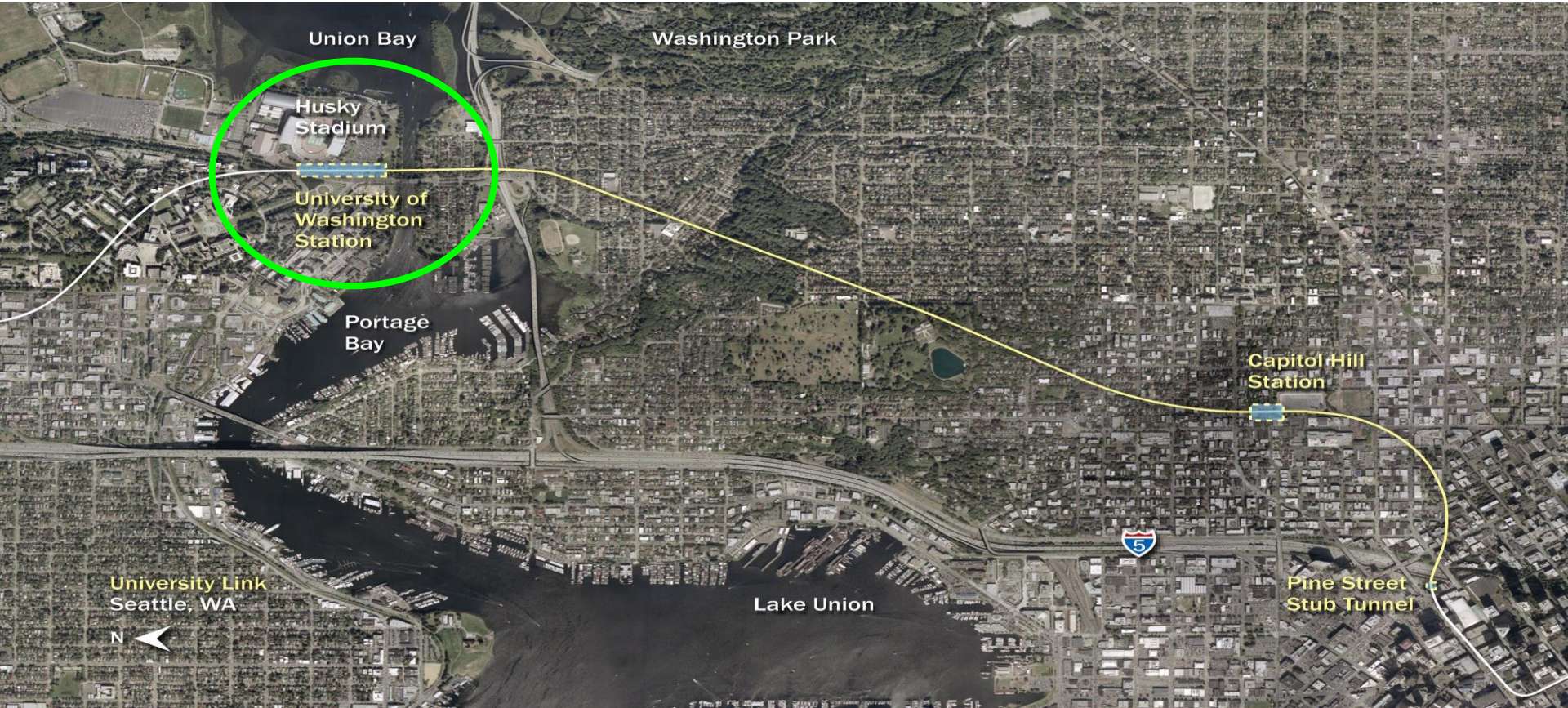


# Capitol Hill Station



# Capitol Hill Station





# University of Washington Station



# University of Washington Station



Photo by Don Wilson

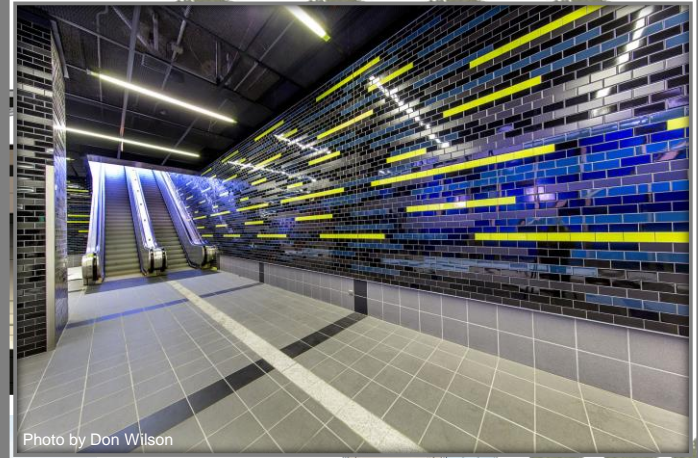
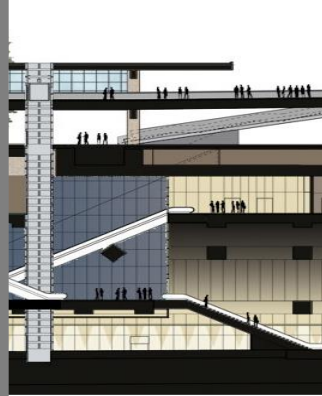


Photo by Don Wilson

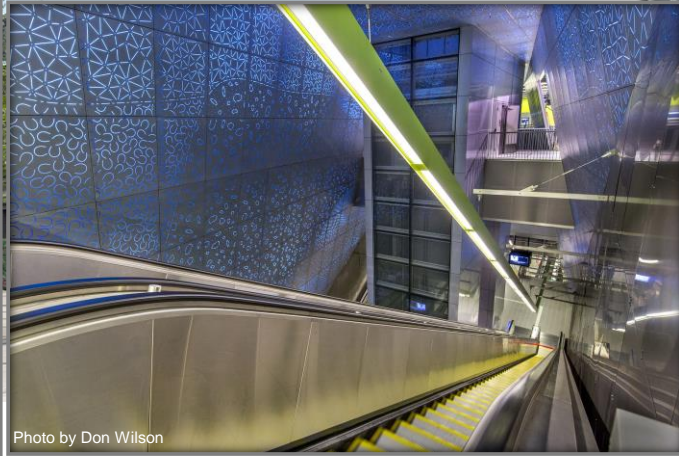


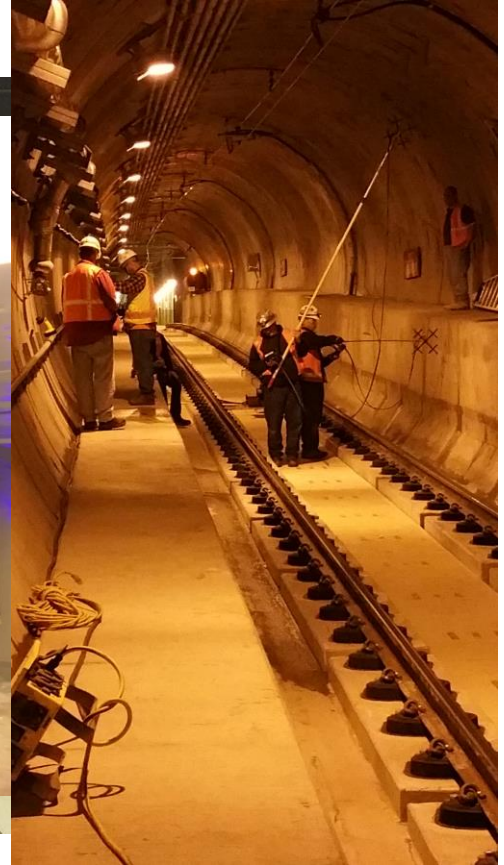
Photo by Don Wilson



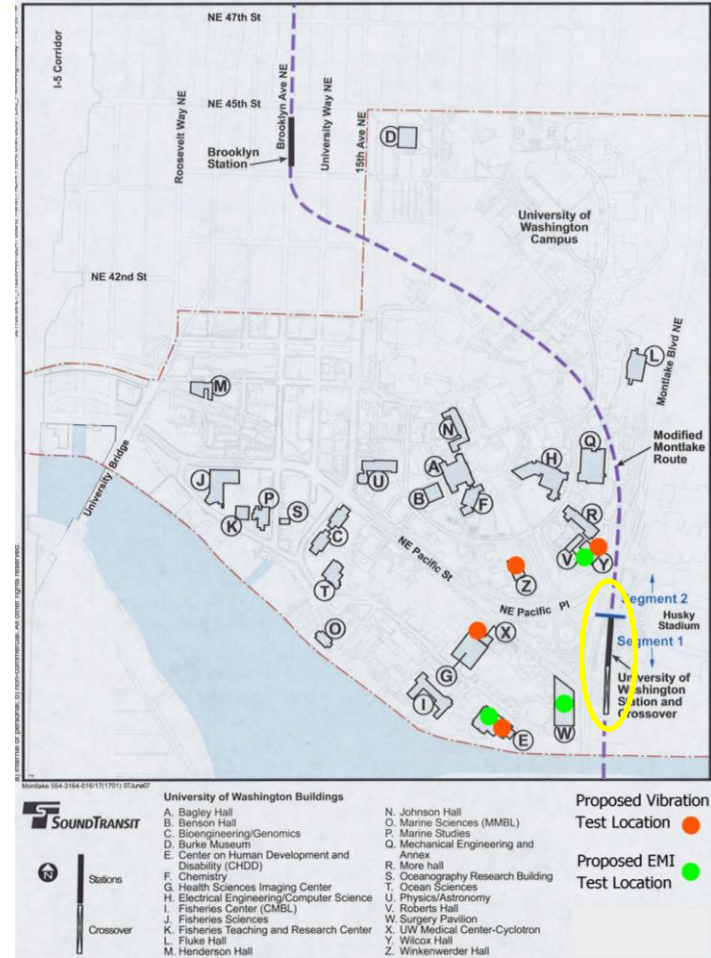
Photo by Don Wilson

10 FEET

# System Testing



- Magnetic Field and Vibration



- Transportation Easement



## Top Five Risks

- Completing Systems Commissioning and Testing
- Completing Safety Certification
- Completing State Safety Oversight & FTA Readiness Review
- State L&I Elevator Permits ➔ Occupancy Permits
- Complete remaining Light Rail Vehicle Fix (Gear Units & Traction Motor)

