



SOUND TRANSIT
STart
Sound Transit Art Program

CAPITAL COMMITTEE, APRIL 12, 2018

EAST LINK EXTENSION
BEL-RED/130TH STATION
REDMOND TECHNOLOGY STATION
PHASE 2 ARTIST CONTRACTS

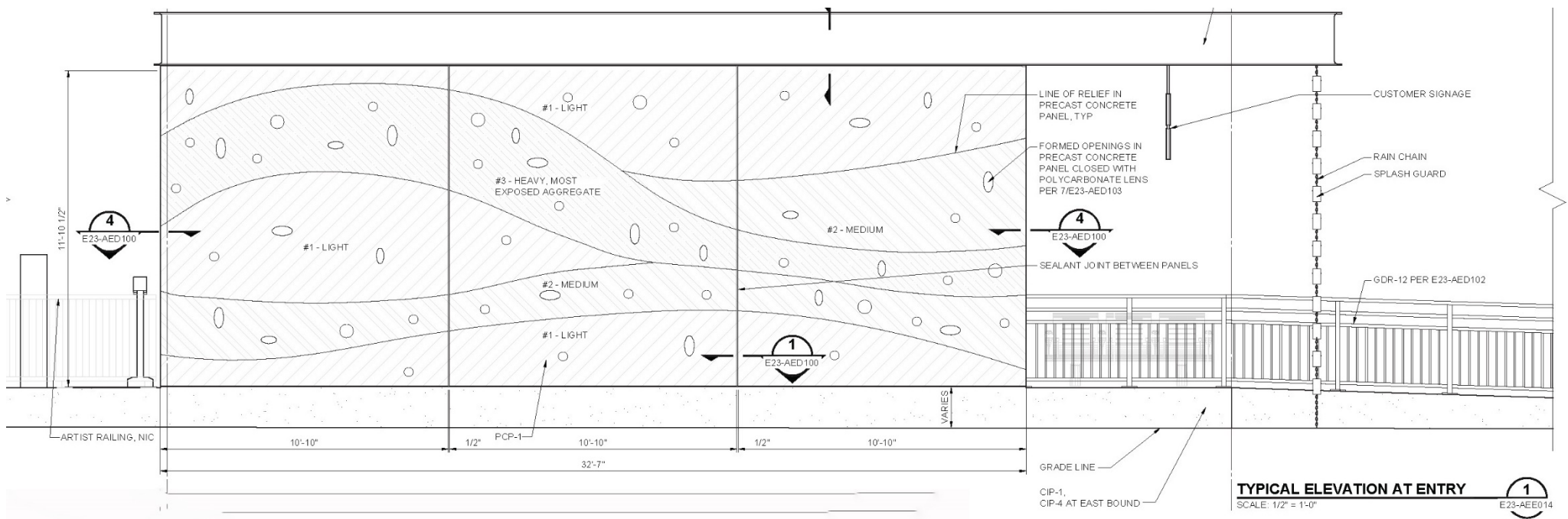
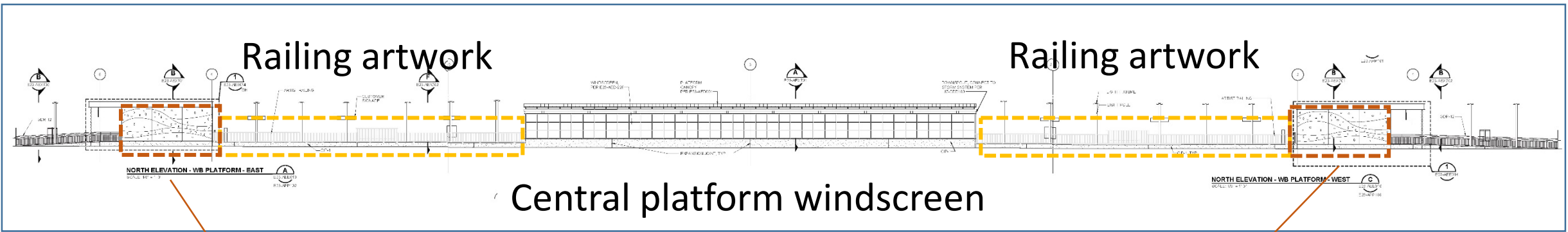
East Link Extension: Bel-Red/130th Station
Patrick Marold, Platform Railing Artwork



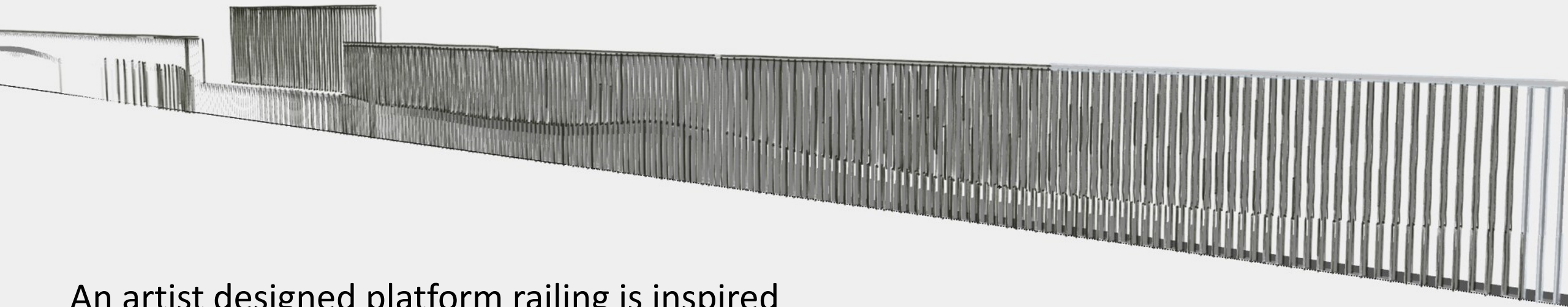
ARTWORK
LOCATIONS
(BOTH SIDES)

ARCHITECT-DESIGNED EXPOSED AGGREGATE
CONCRETE WALL WITH WAVE PATTERN

Bel-Red/130th Station (looking towards the SE)



Architectural ornament on exterior of ticket vending structures



An artist designed platform railing is inspired by Bellevue's goal for a Cultural/Arts District in the surrounding neighborhood.



Artist's rendering (sun low in the sky)



Artist's rendering, 1 of 4 platform benches



Artist's prototype

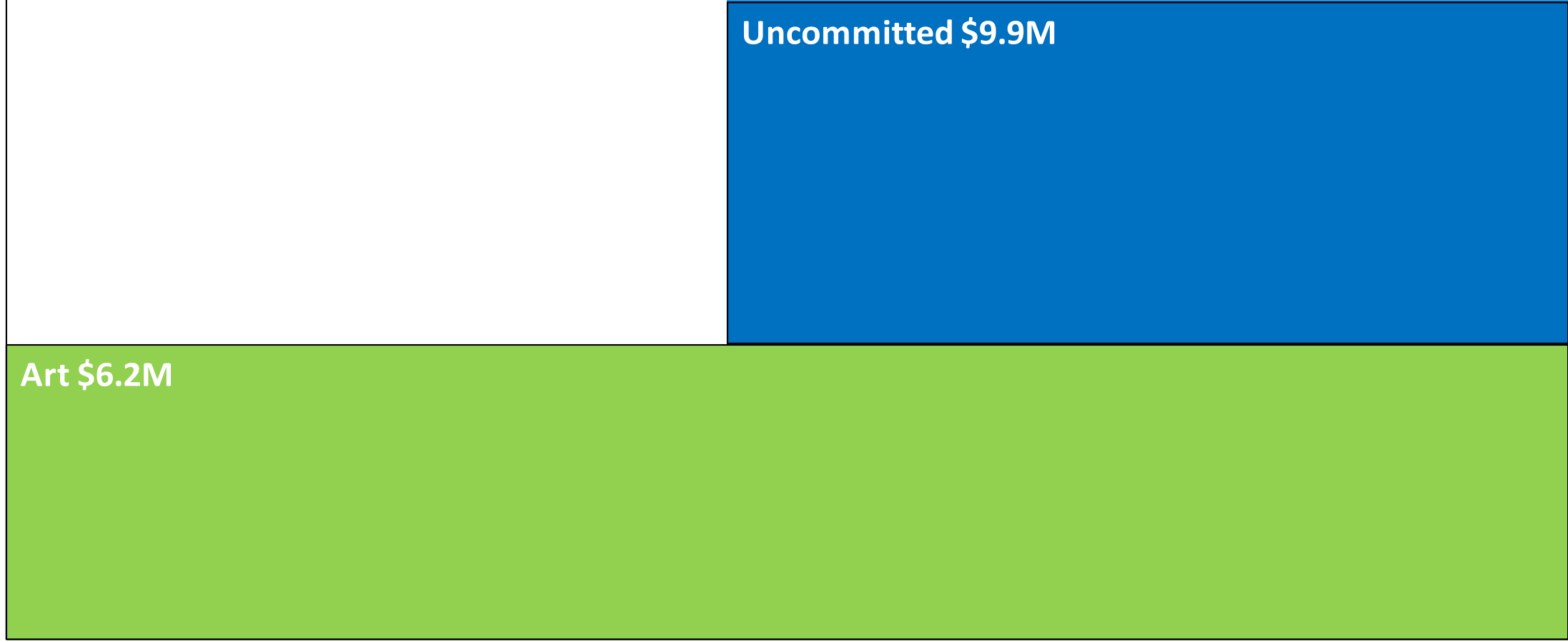
Illustrative - Not to Scale

Start EAST KING COUNTY: Authorized Program Allocation \$16.2M

ALLOCATION \$ COMMITMENTS



Sound Move
ST2



1997-2012
Sound Move

2013
ST2

2014

2015

2016

2017

2018

2019

2020

2021

2022

2023

2024



Approved



Today's Action



Future Action

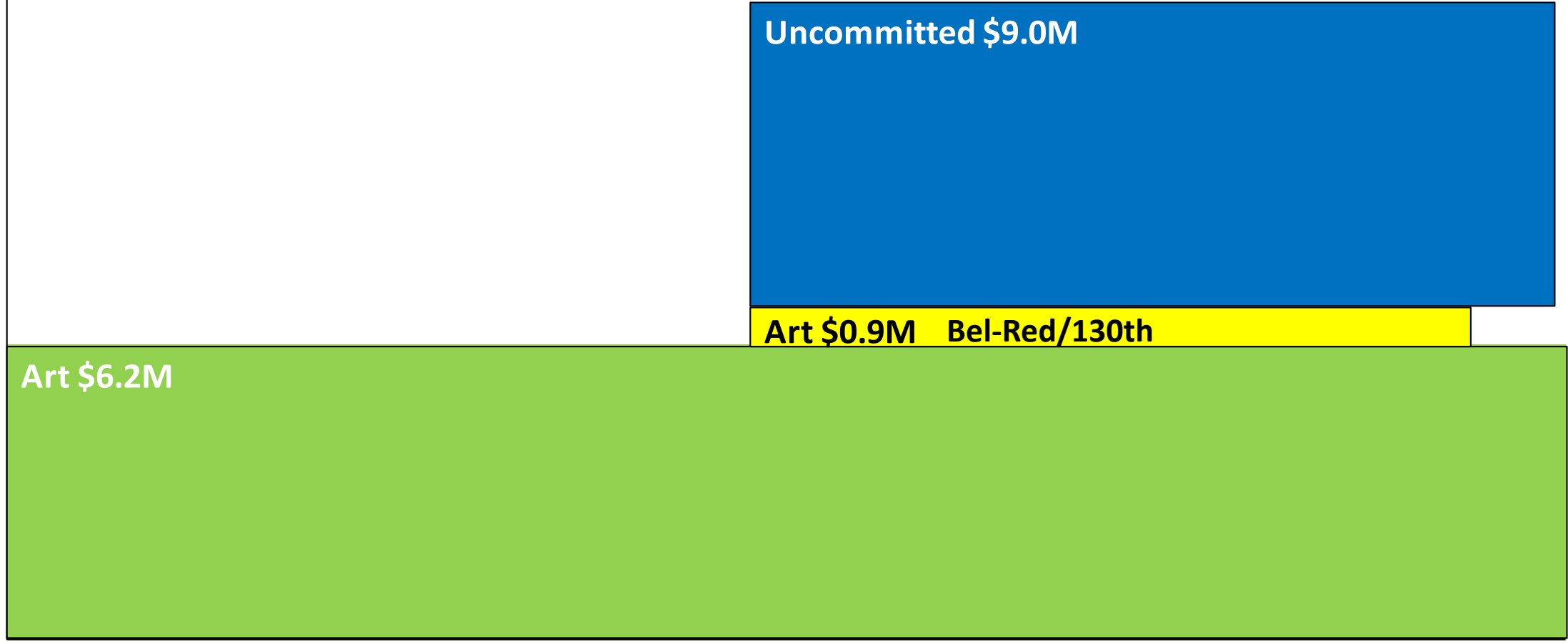
Illustrative - Not to Scale

Start EAST KING COUNTY: Board Approves Art Contract Amendment for the Bel-Red/130th Station \$0.9M

ALLOCATION \$ COMMITMENTS



Sound Move ST2



1997-2012 Sound Move

2013 ST2

2014

2015

2016

2017

2018

2019

2020

2021

2022

2023

2024



Approved



Today's Action



Future Action

Art \$6.2M

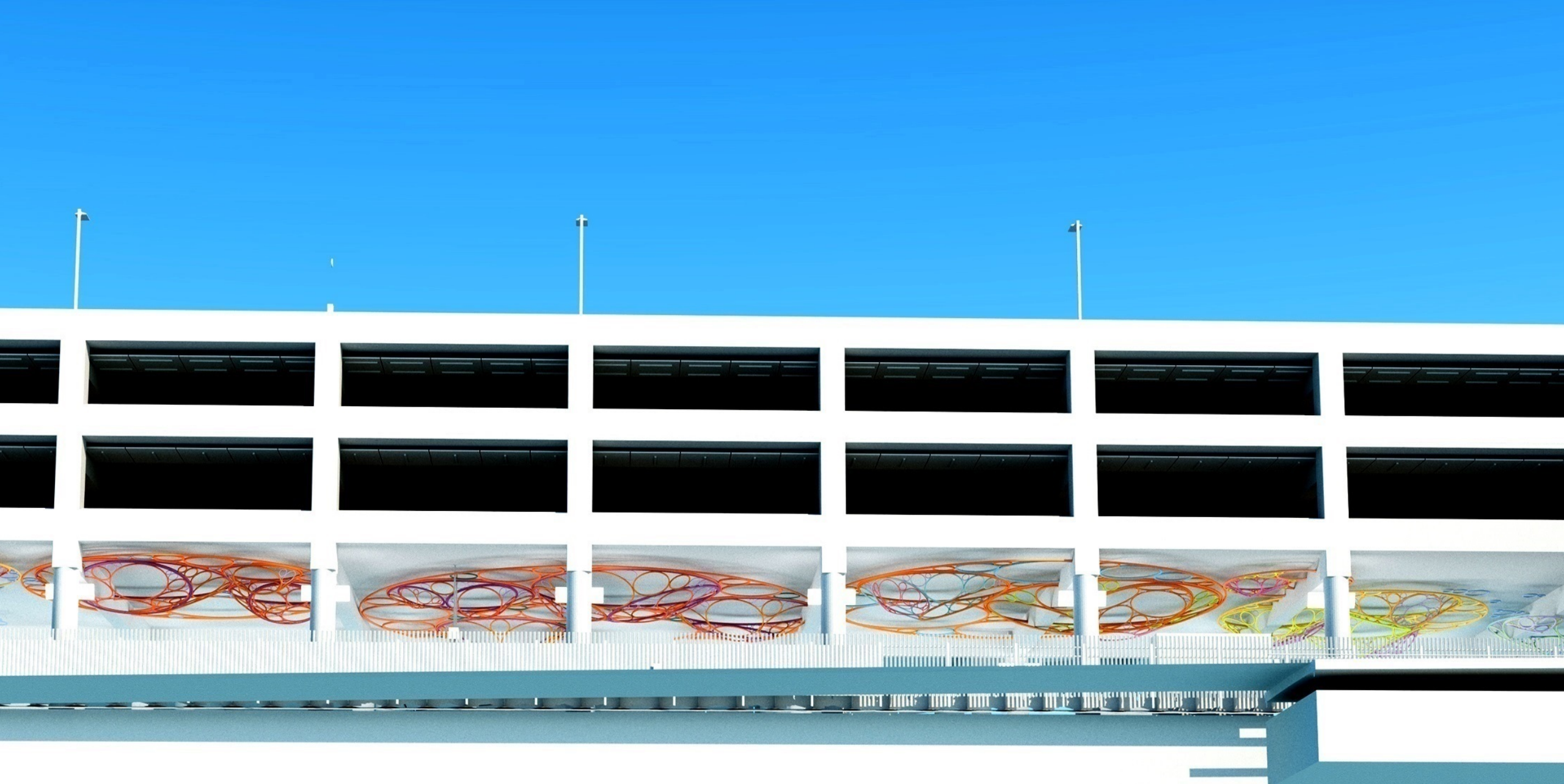
Art \$0.9M Bel-Red/130th

Uncommitted \$9.0M

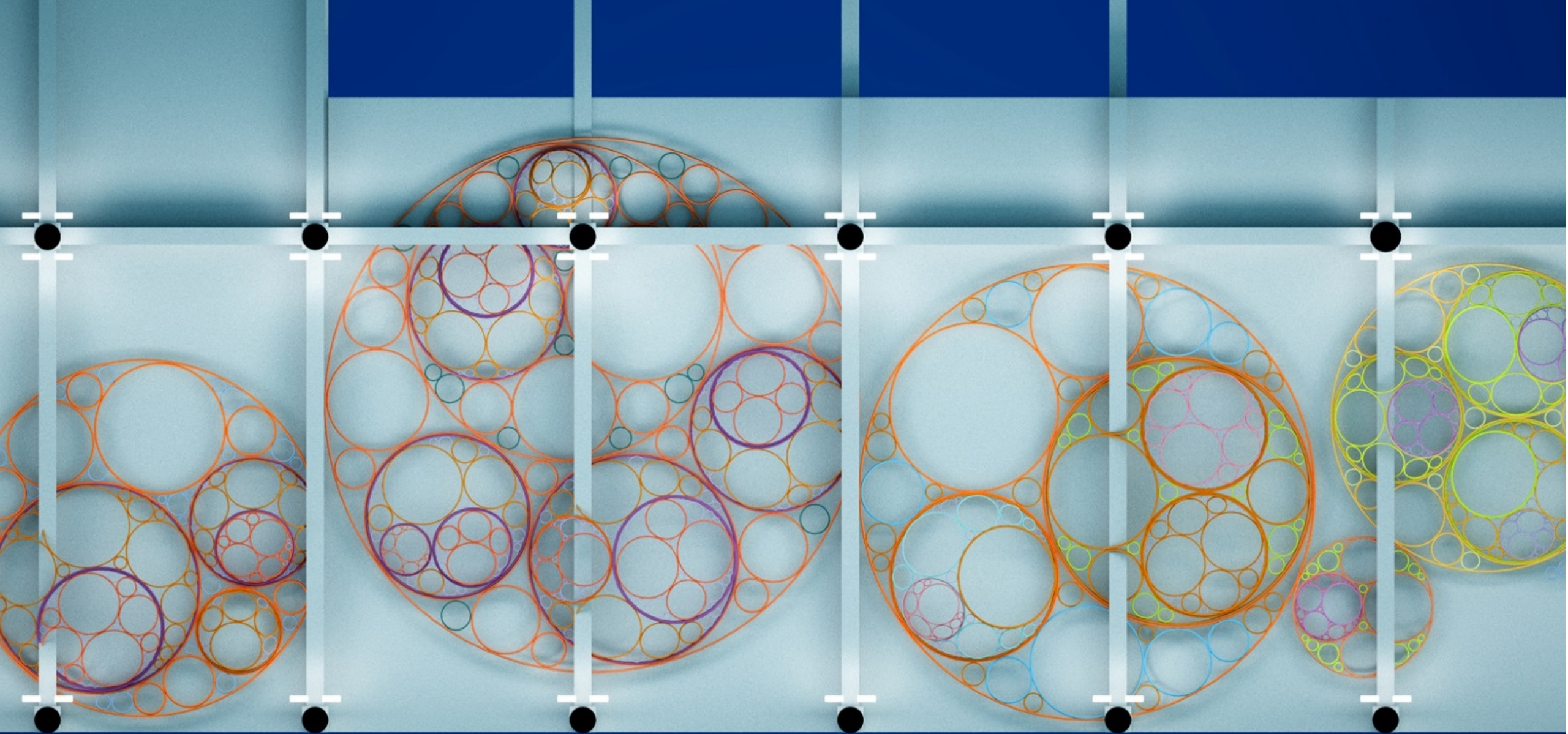
East Link Extension: Redmond Technology Station
Kate Sweeney, Garage Ceiling Sculpture



Redmond Technology Station



Looking east from station platform toward ceiling sculpture.



Ceiling view of artwork inspired by the “Apollonian Gasket”



Redmond Technology Station





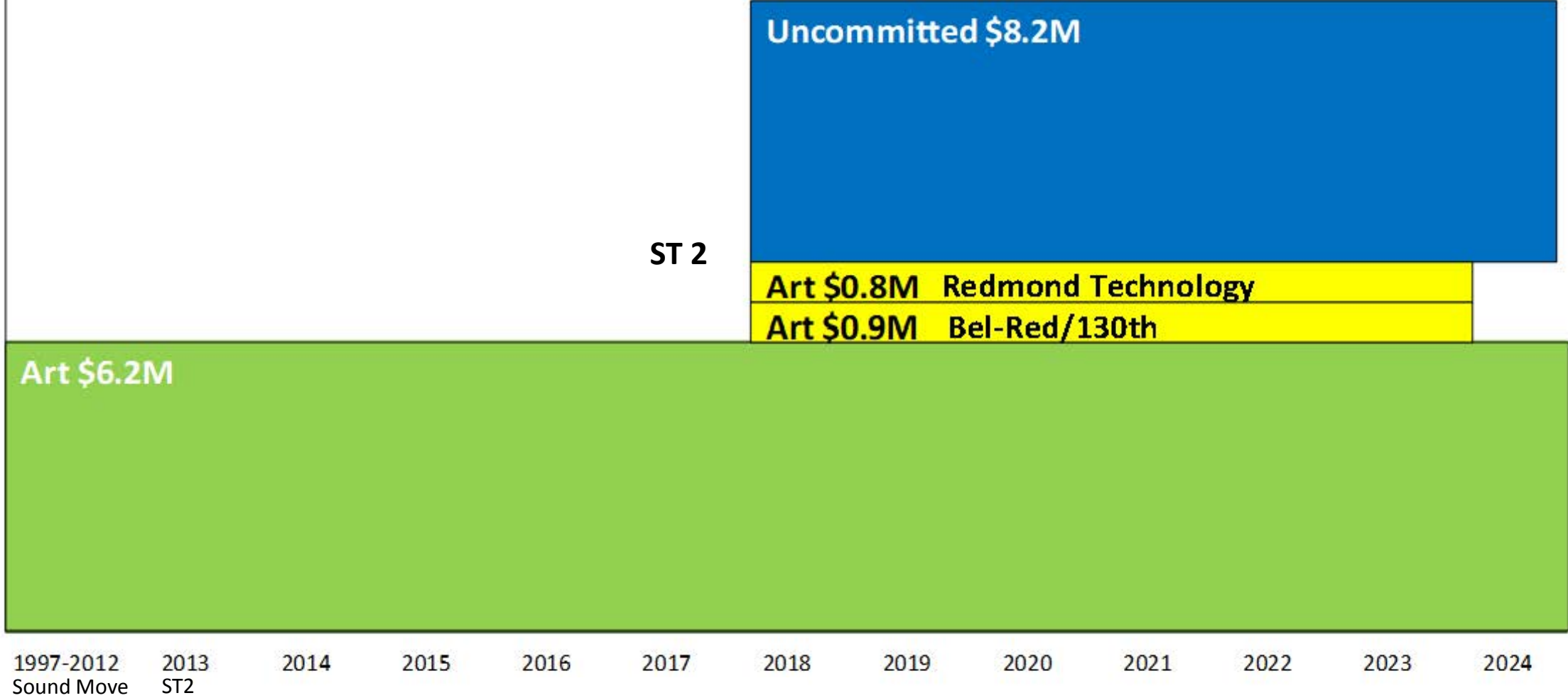
Artwork looking south towards station entrance

Illustrative - Not to Scale

Start EAST KING COUNTY: Board Approves Art Contract Amendment for the Bel-Red/130th \$0.9M & Redmond Tech \$0.8M Stations

ALLOCATION \$ COMMITMENTS

\$16.2M
East KC Subarea Art Allocation



Sound Move
ST2

1997-2012 Sound Move
2013 ST2
2014
2015
2016
2017
2018
2019
2020
2021
2022
2023
2024

■ Approved ■ Today's Action ■ Future Action