



# *West Seattle and Ballard Link Extensions*

*Capital Committee | 4.12.18*



# Motion No. M2018-52

- Project Administration Agreement with City of Seattle
- Task Order One for Alternatives Development phase

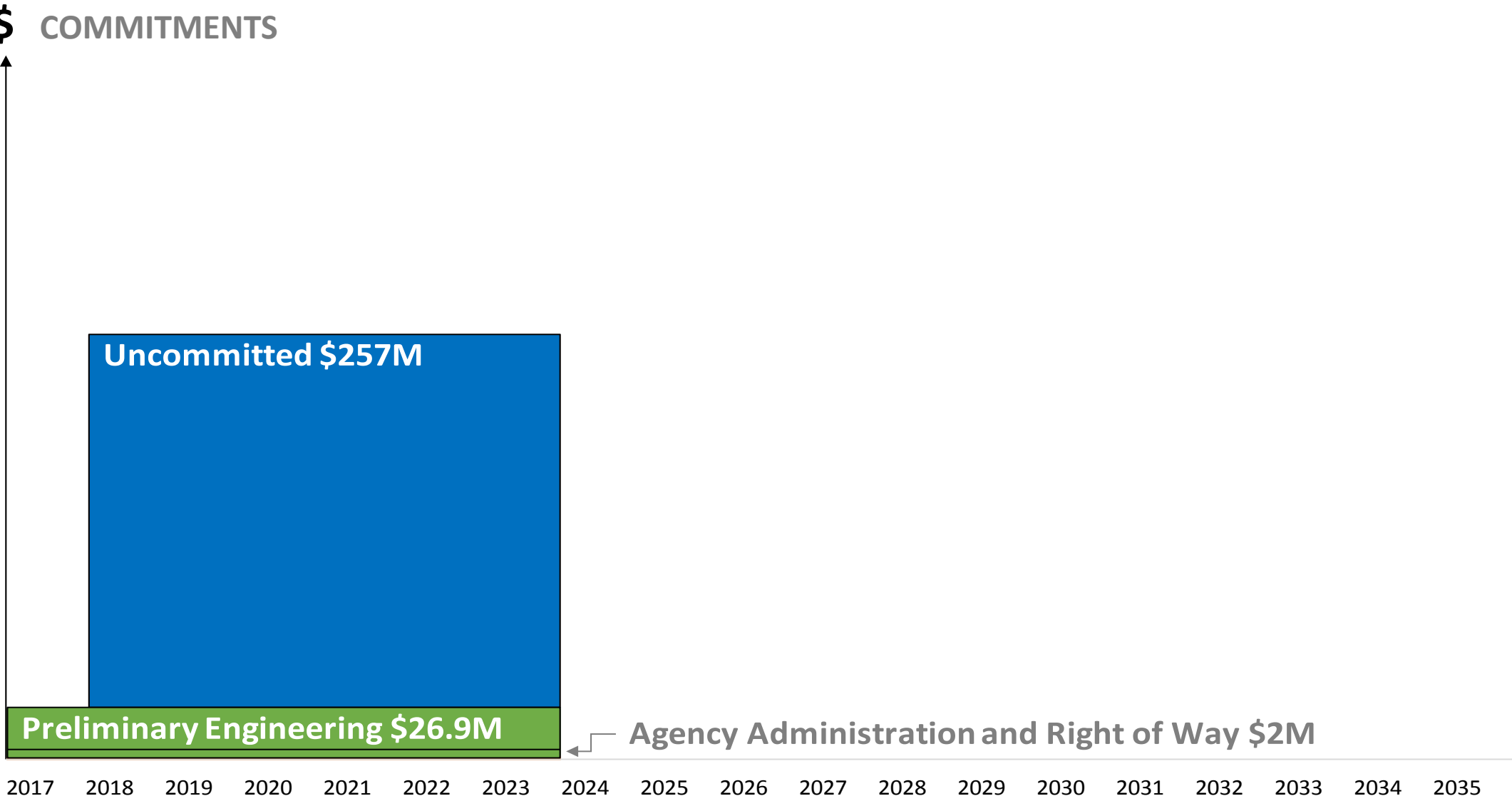
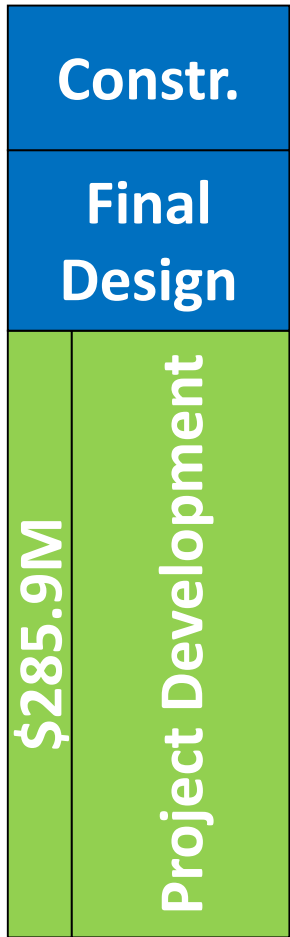
# *Project Administration Agreement*

- Provides *framework for reimbursement* of certain City services in support of expedited project development
- Companion to *Partnering Agreement* executed in January
- Provides for reimbursement through *task orders*
  - Task Order One includes support of early engineering and permit streamlining activities during Alternatives Development

Illustrative - Not to Scale

# West Seattle & Ballard Link Extension: Authorized Project Allocation \$285.9M

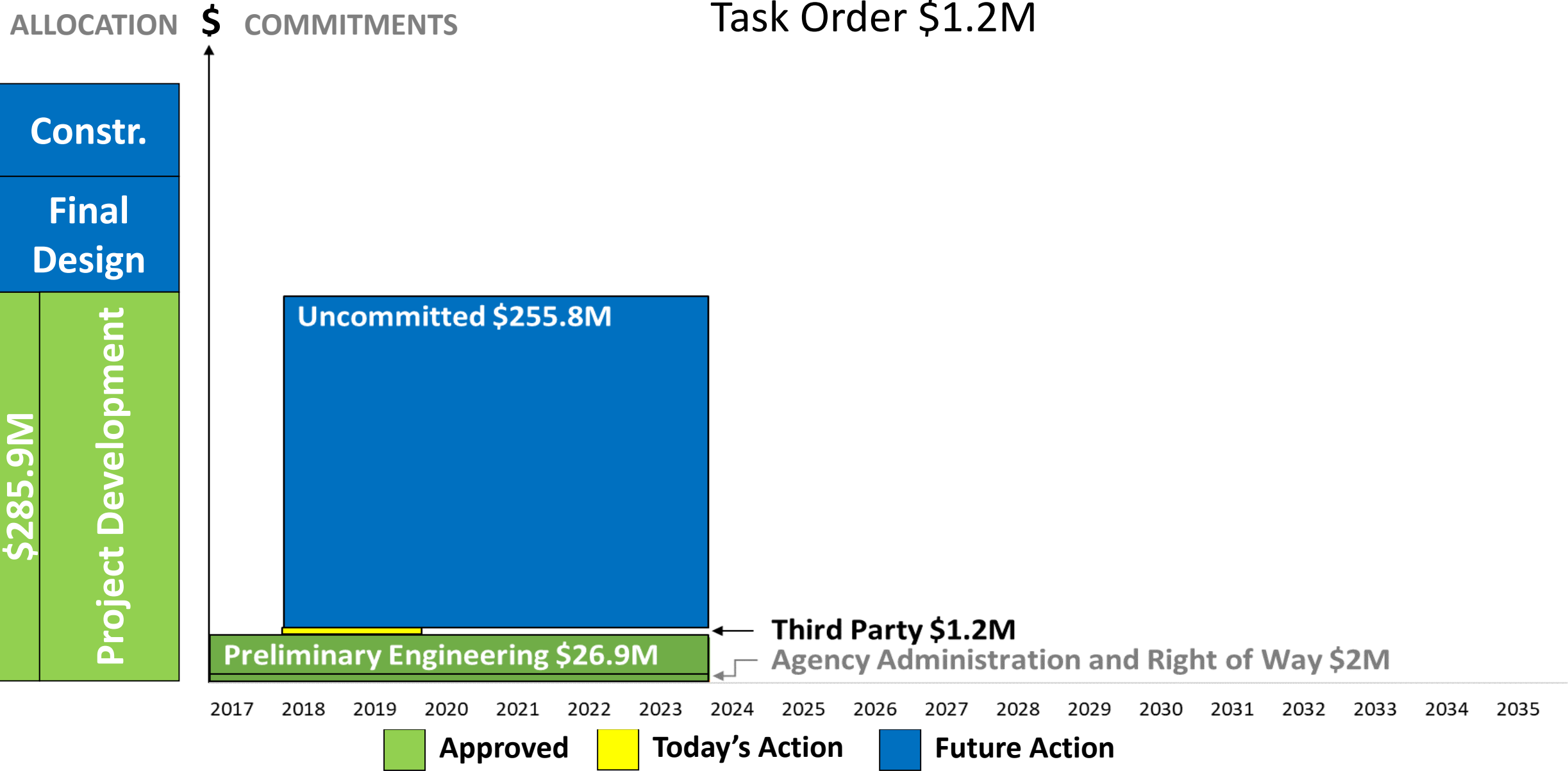
ALLOCATION \$ COMMITMENTS



**Approved**   **Today's Action**   **Future Action**

Illustrative - Not to Scale

# West Seattle & Ballard Link Extension: Board Approves Seattle Project Administration Task Order \$1.2M





*wsblink*@soundtransit.org  
206-903-7229

*soundtransit.org/wsblink* 

 **SOUNDTRANSIT**

A light rail train is stopped at a station platform. The train is white with blue and green wavy graphics along its side. A backup slide is extended from the open door. Several people are on the platform, including a man in a dark shirt and khaki pants standing near the slide, a woman in a pink top and black pants walking, and a man in a grey t-shirt and khaki pants walking. In the background, there are other people, a blue sign with a train icon, and a city street with buildings and trees.

***Backup slides***



# West Seattle Link Extension

- Opening 2030
- Four elevated stations at SODO, Delridge, Avalon and Alaska Junction; one at-grade station at Stadium
- New rail-only fixed span crossing of the Duwamish River
- Length: 4.7 miles



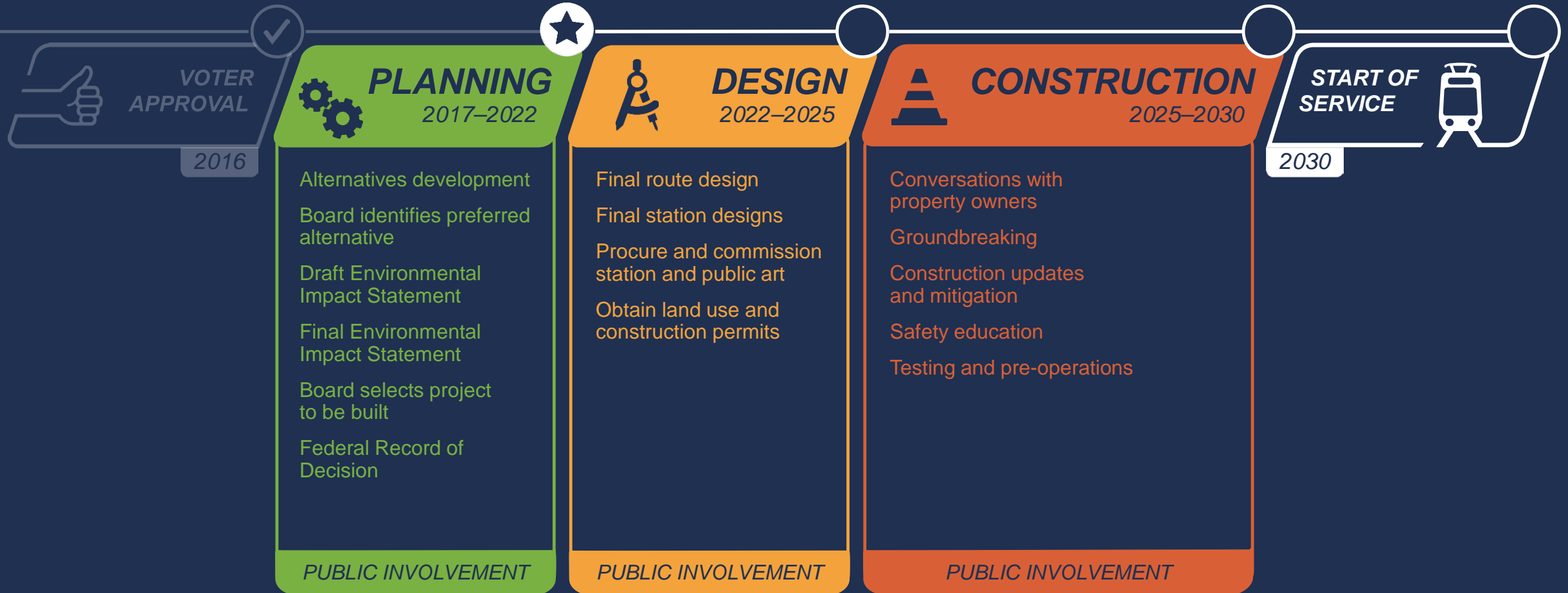




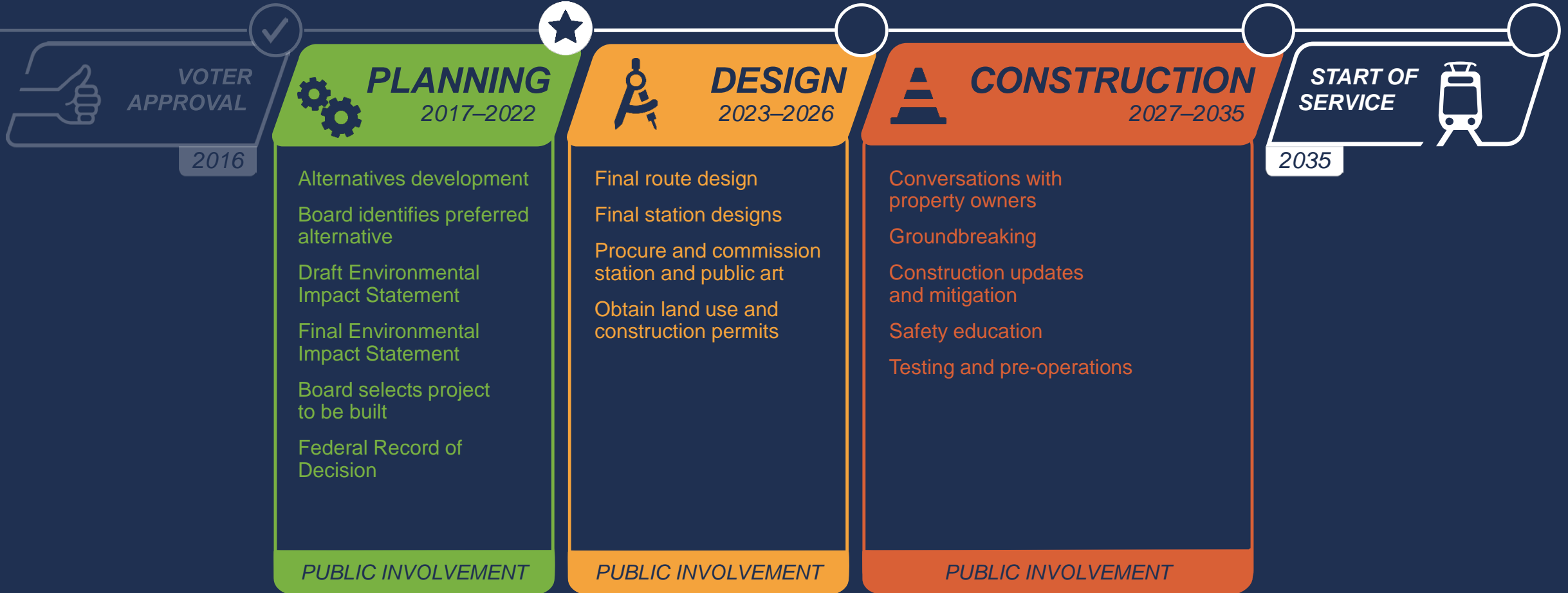
# *Ballard Link Extension*

- Opening 2035
- Three elevated stations: Ballard, Interbay, Smith Cove
- Six tunnel stations: Seattle Center, South Lake Union, Denny, Westlake, Midtown, International District/Chinatown
- New rail-only movable bridge over Salmon Bay
- Length: 7.1 miles

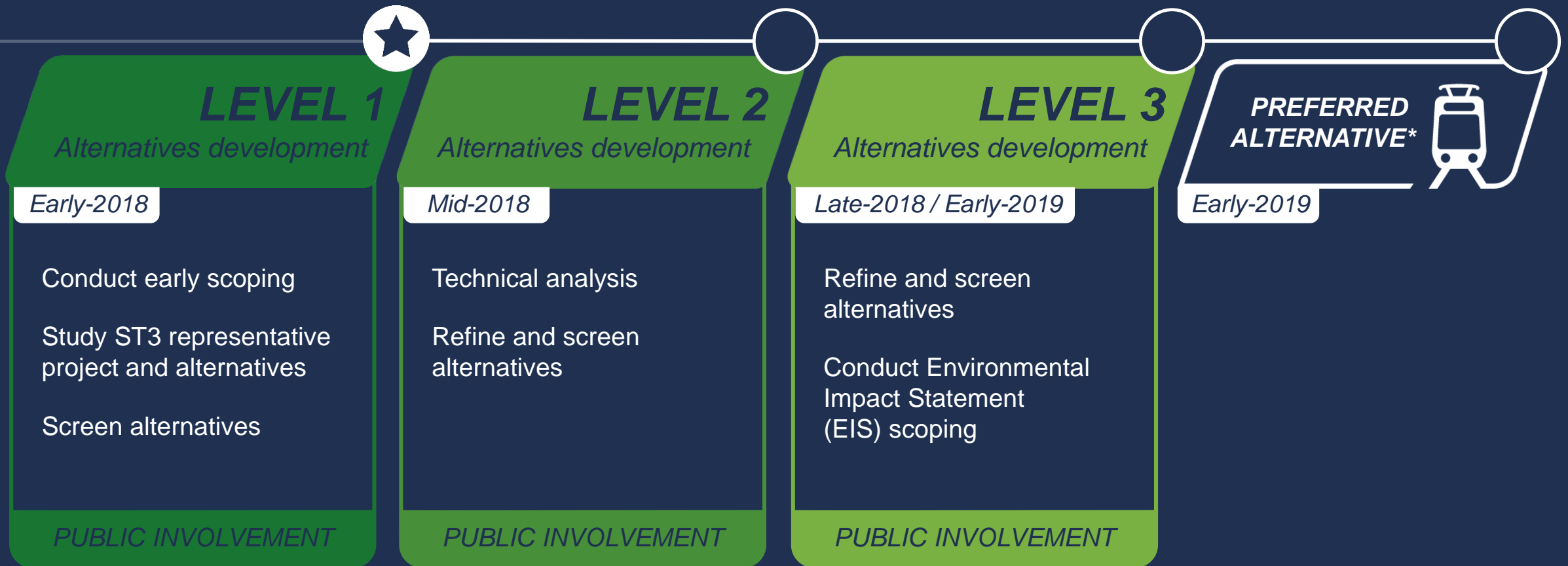
# West Seattle project timeline



# Ballard project timeline



# Alternatives development process



\*The Sound Transit Board identifies preferred alternatives and other alternatives to study.



# Community engagement and collaboration



Community Updates



Neighborhood Forums



Stakeholder Advisory Group



Elected Leadership Group



Sound Transit Board



Meeting dates subject to change.