



STArt

Sound Transit Art Program

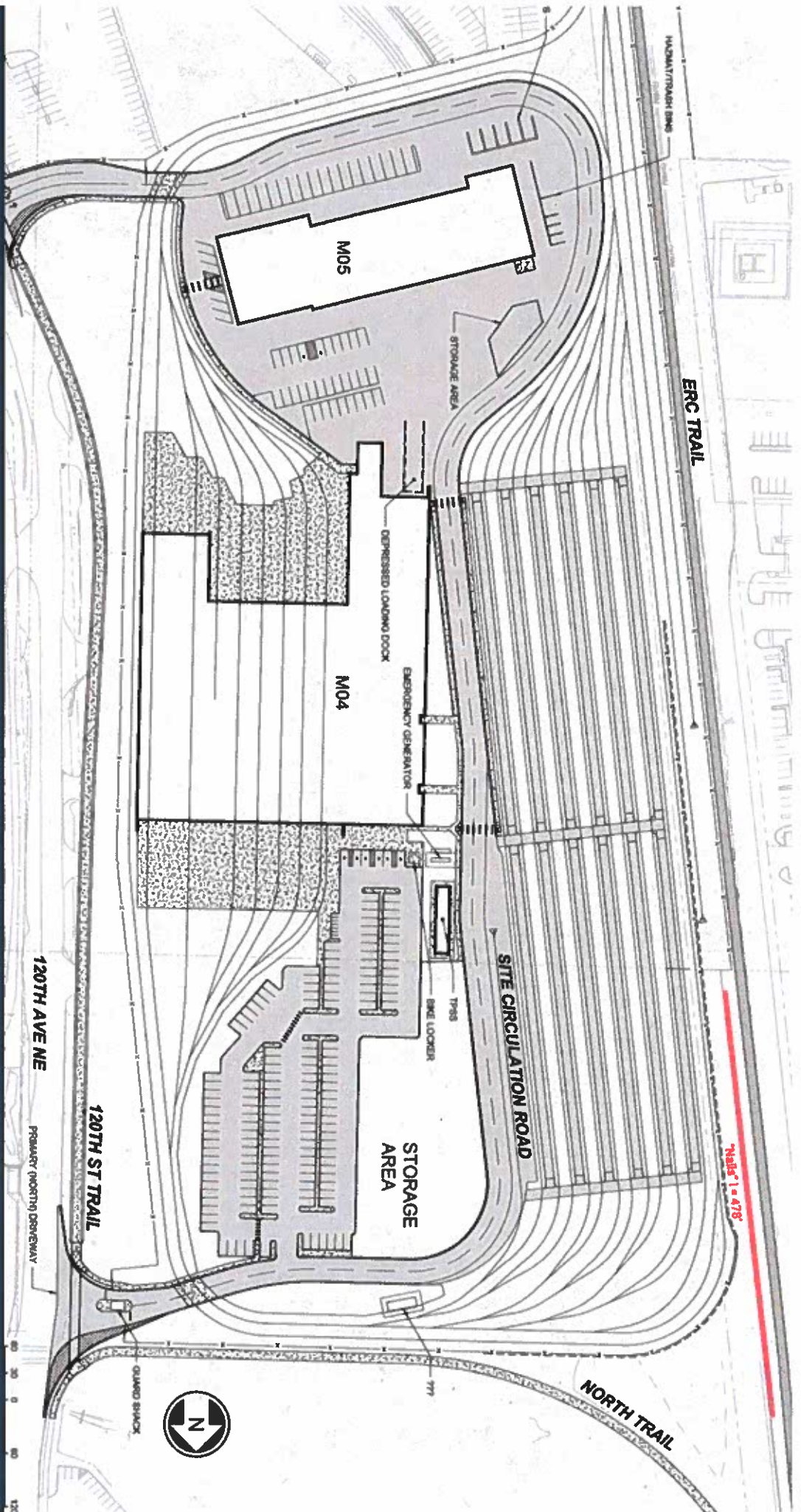
CAPITAL COMMITTEE -- June 14, 2018

Motion No. M2018-72

Artist services contract amendment

Operations Maintenance Facility: East

OMFE site plan showing artwork location

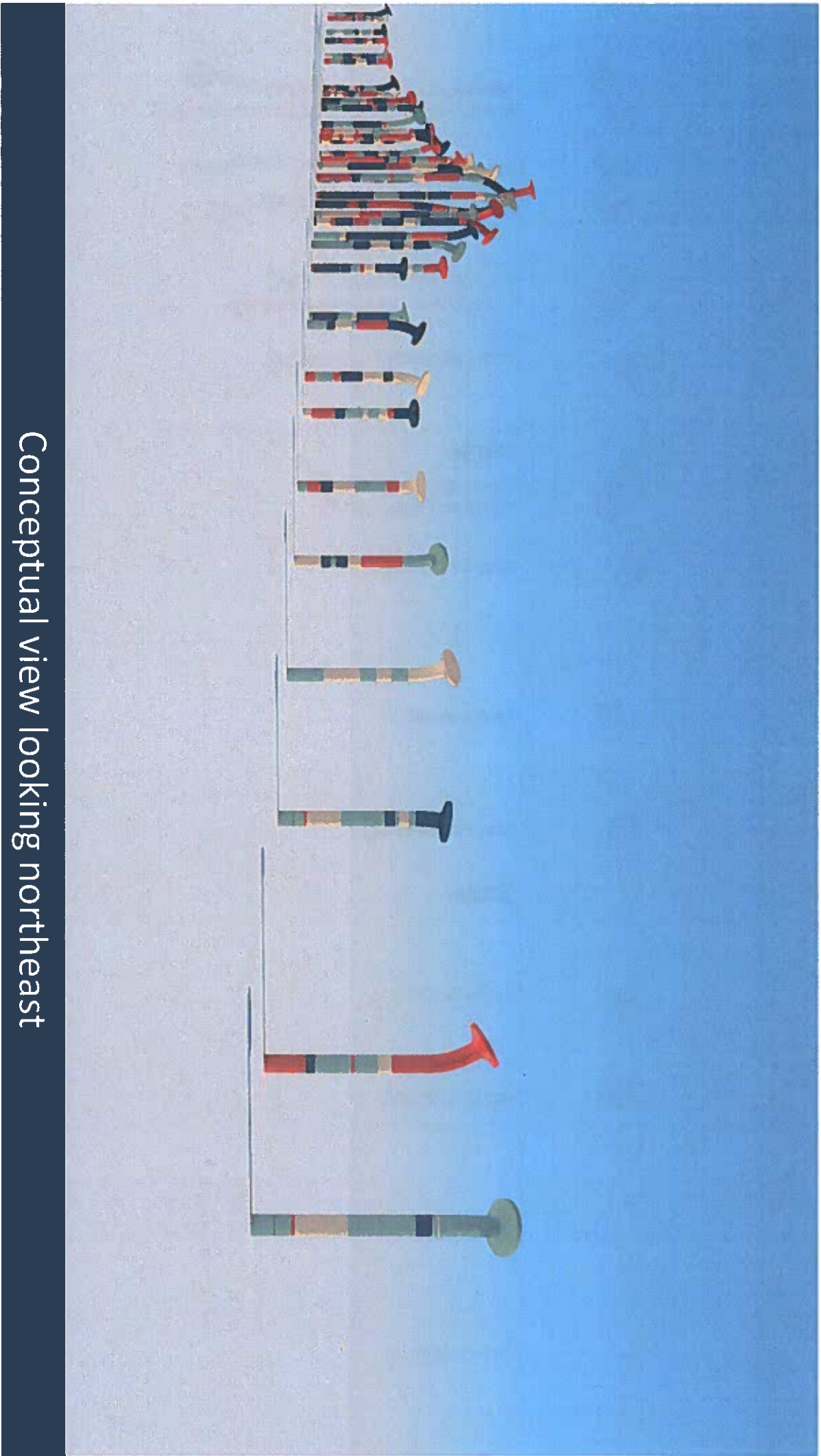


OMF East View south along 120th Ave NE Interim Multi-use Trail

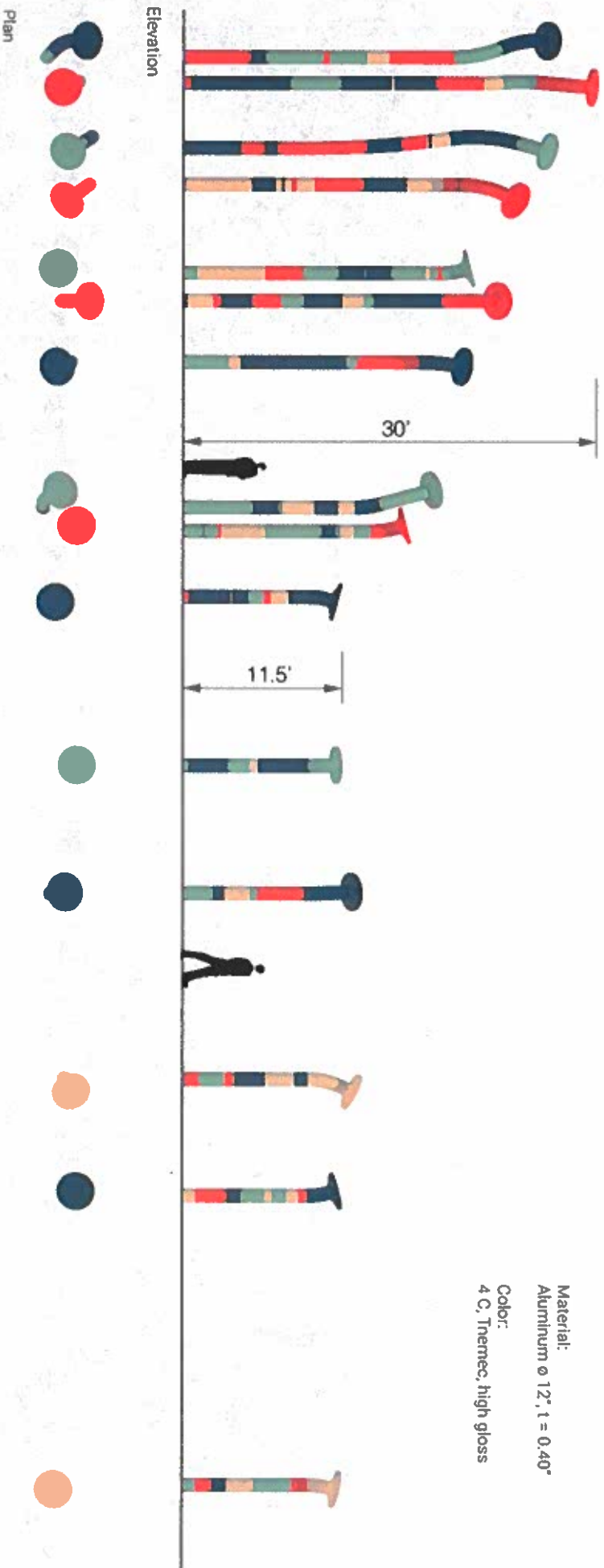




Conceptual view looking north along Eastside Rail Corridor trail

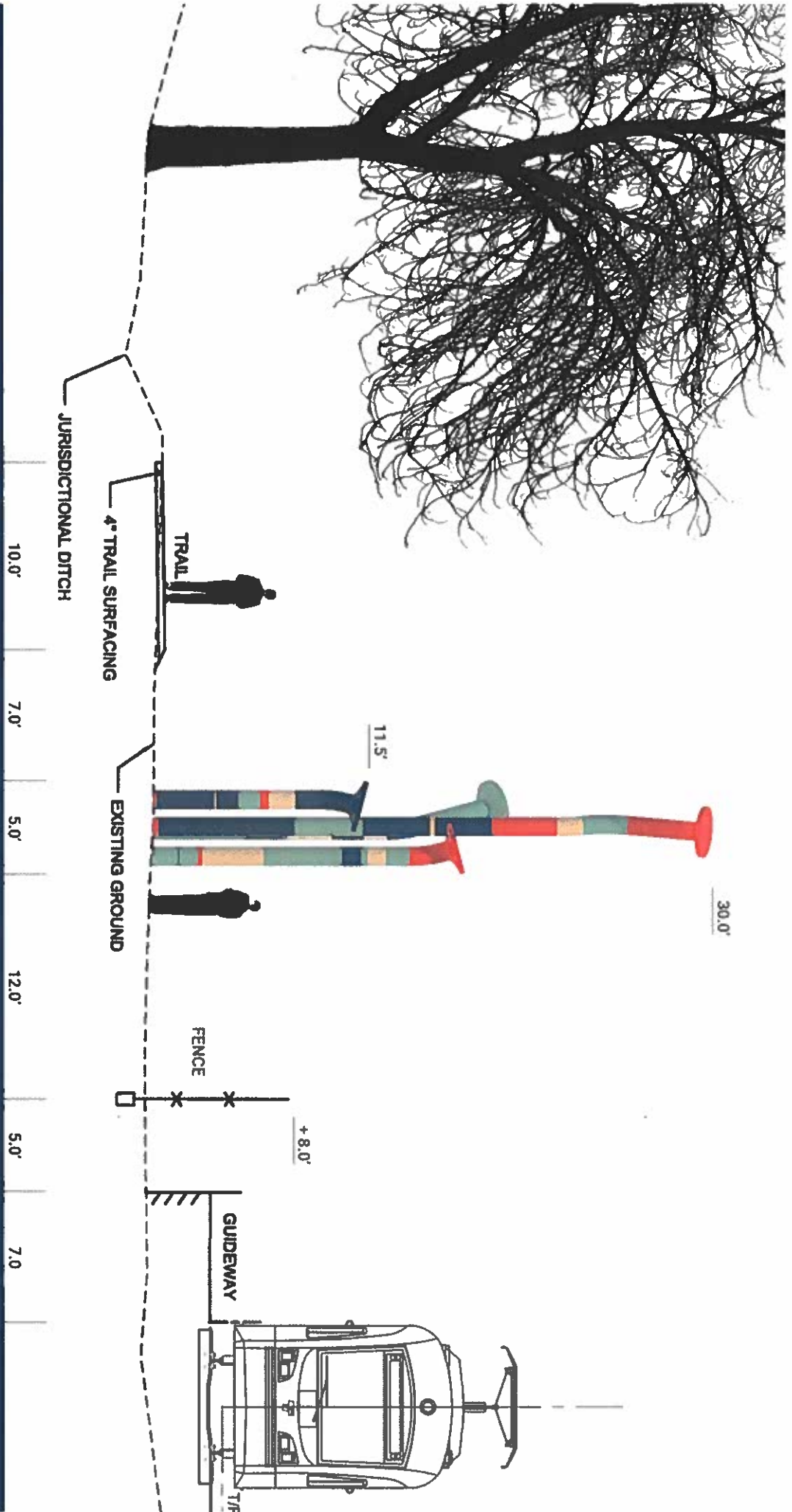


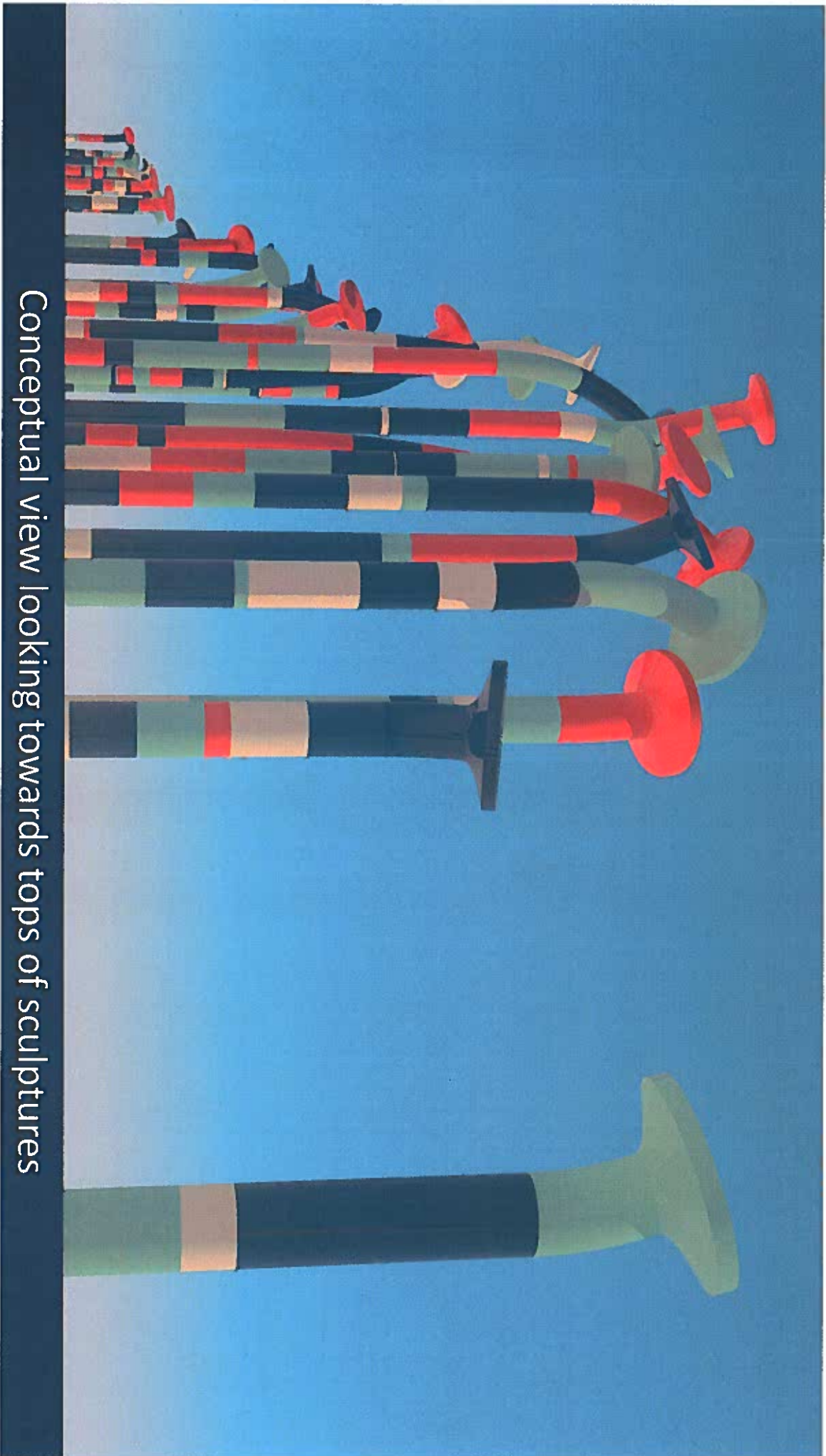
Conceptual view looking northeast



Elevation details showing sculpture heights

Section detail showing relationship to OMFE and Eastside Rail Corridor trail



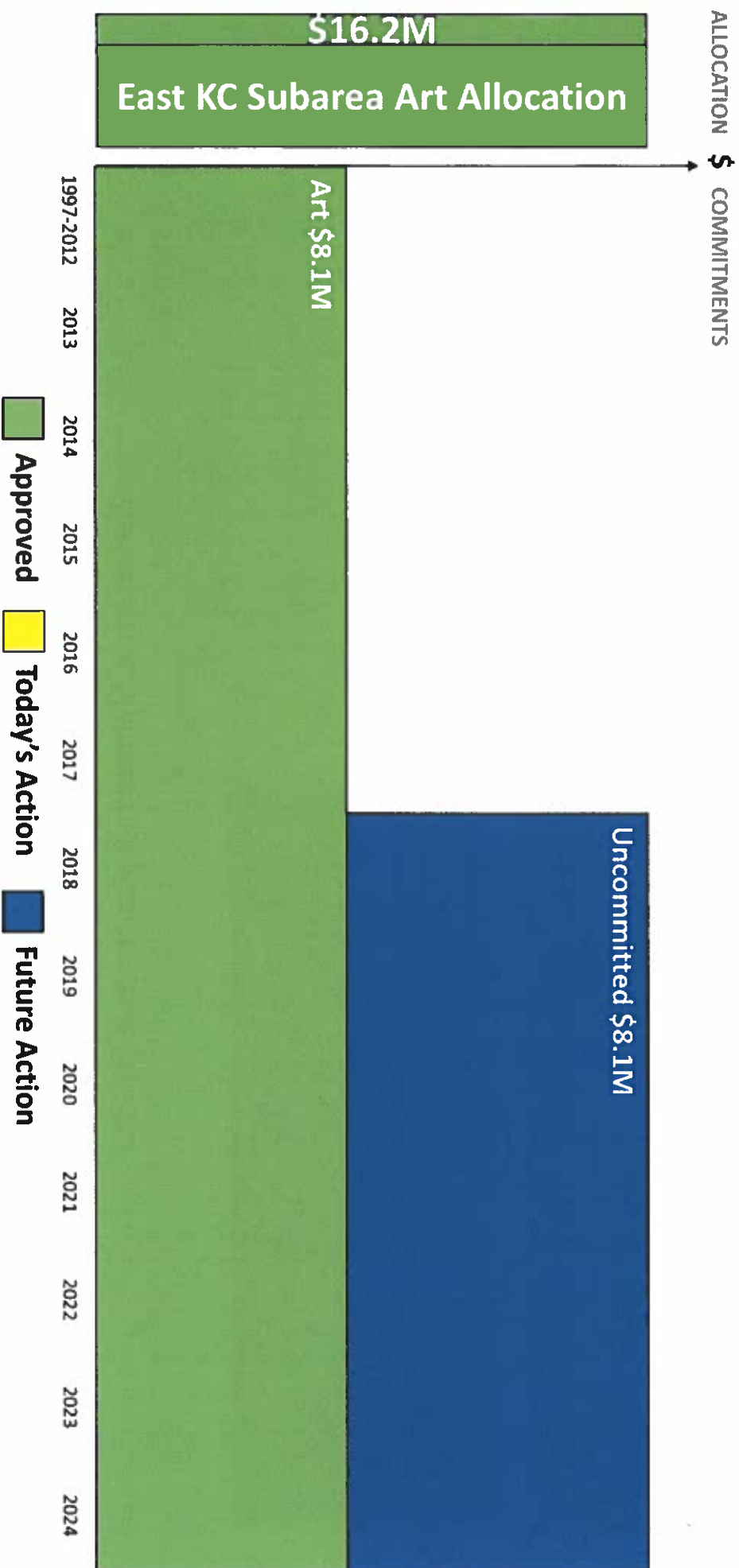


Conceptual view looking towards tops of sculptures

Illustrative - Not to Scale



Start EAST KING COUNTY: Authorized Program Allocation \$16.2M

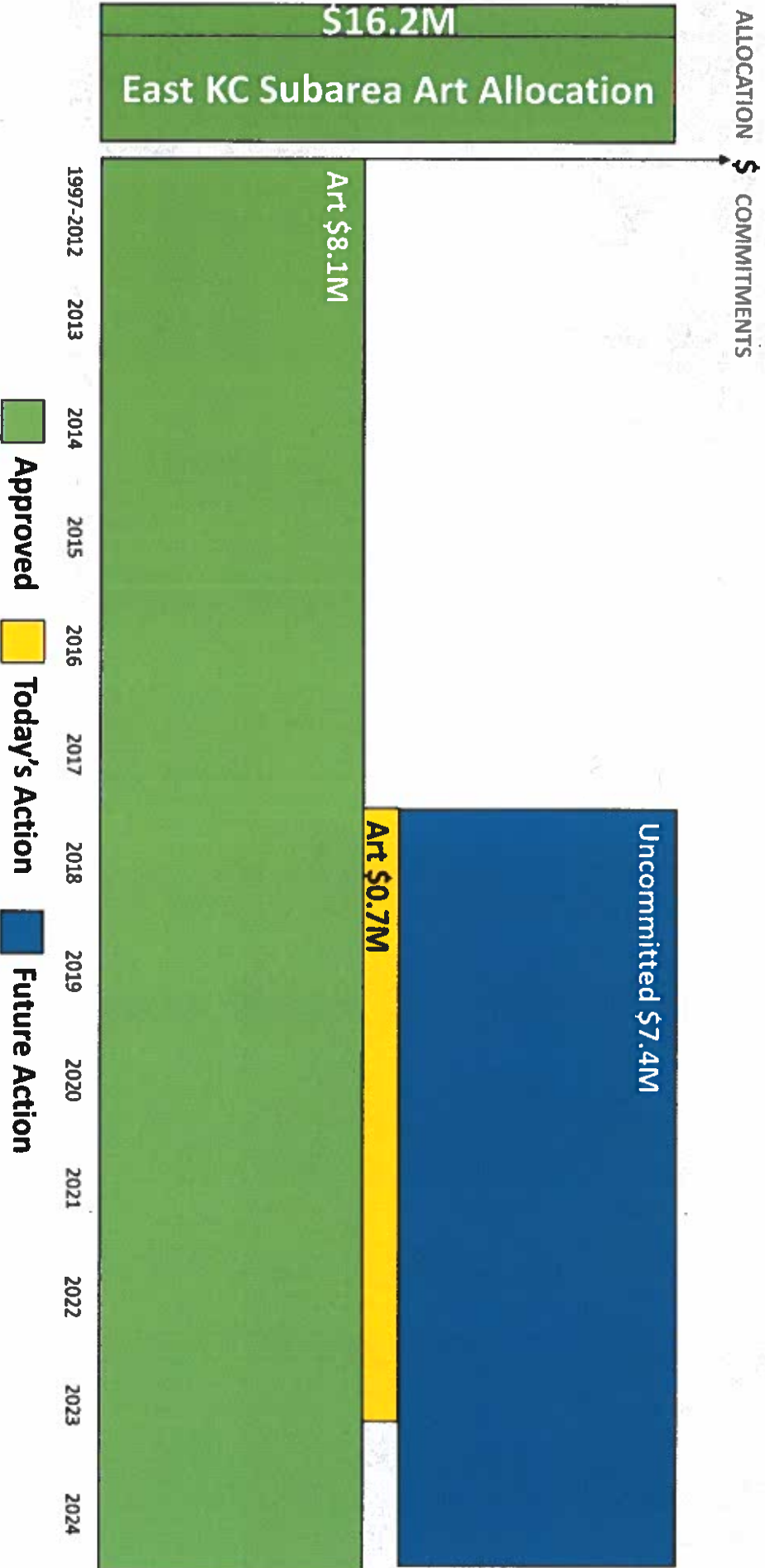


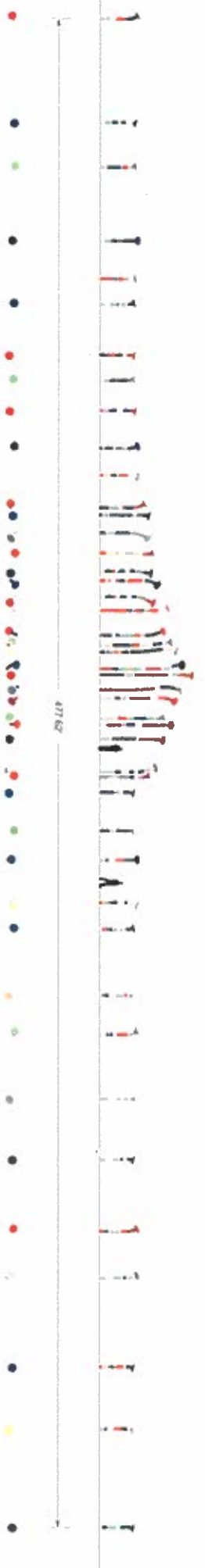
Illustrative - Not to Scale



Start EAST KING COUNTY:

Board Approves Art Contract Amendment for the
Operations & Maintenance Facility: East \$0.7M





45 "Nails" ϕ 12" (h = 28" - 9")

Cross section showing full extent of artwork

