



# 2017 Sustainability Progress Report

Board Meeting  
August 23, 2018

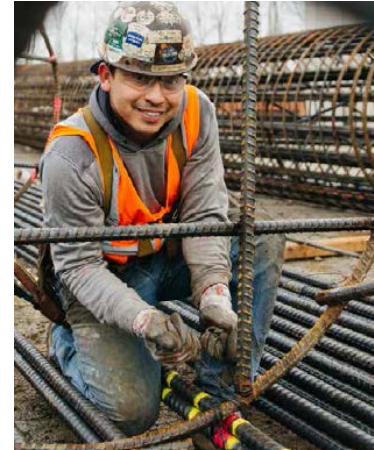
 **SOUNDTRANSIT**

# 2017 Sustainability Progress Report

- Sustainability Overview
- 2017 Highlights
- Green Direct - 2018
- Recognition
- Continual Improvement



# Overview - Sustainability



People - Planet - Prosperity

# Overview - Sustainability

*Sustainable Business Practices and strategies will be integrated throughout the Sound Transit organization, including planning, designing, constructing, operating existing and new transit systems and facilities. - Ex. Order #1, 2007*

- 2004** - Board adopted Environmental Policy
- 2007** - Environmental and Sustainability Management System ISO certified
  - Board adopted Sustainability Resolution
  - Executive Order 1
- 2011** - 1<sup>st</sup> Sustainability Plan
- 2015** - Sustainability Plan Update
- 2016** - ST3 Plan affirmed Sustainability Plan goals

# Sustainability Roles & Responsibilities

## Across the agency

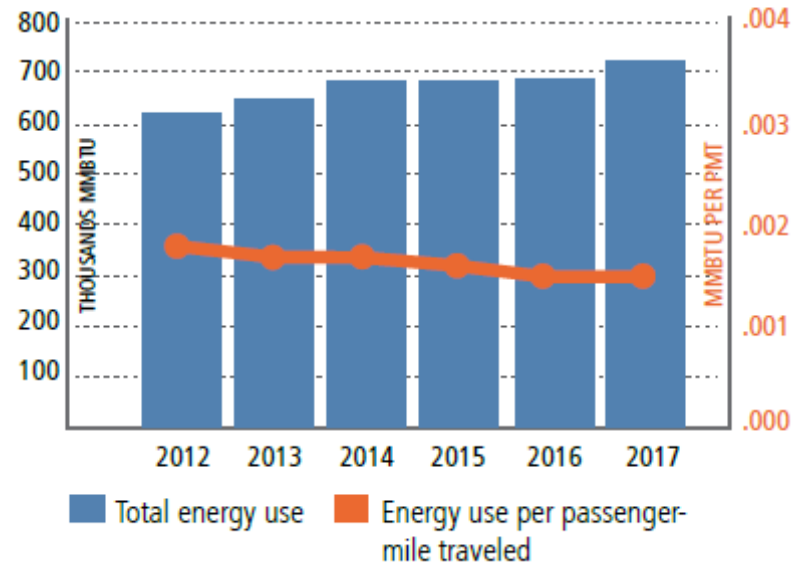
- Develop sustainability strategy and associated policies
- Annually monitor and report sustainability progress to board
- Administer Environmental and Sustainability Management System
- Provide technical expertise to all departments

# 2017 Highlight - Maximizing Efficiency

## 2017:

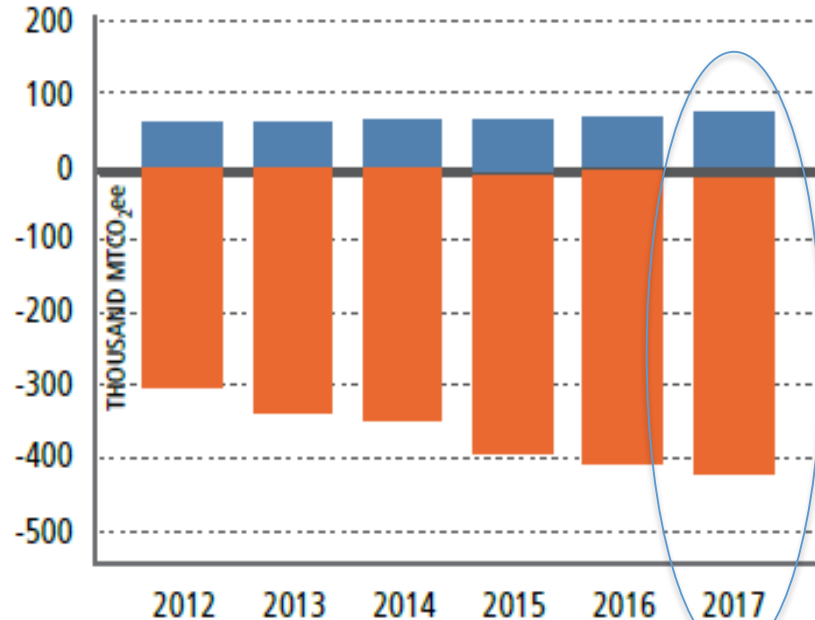
- Ridership increased 10%
- Energy used to move passengers = same as 2016

REVENUE FLEET ENERGY USE



# 2017 Highlight – Growing Regional Benefits

## GREENHOUSE GAS EMISSIONS



**2017:**  
5 % more GHG savings than 2016

- Agency emissions from operations
- Regional emissions avoided when residents take transit

# Regional environmental benefits

ST services avoid GHG emissions equivalent to:



Powering more than  
**45,000 homes** for a year

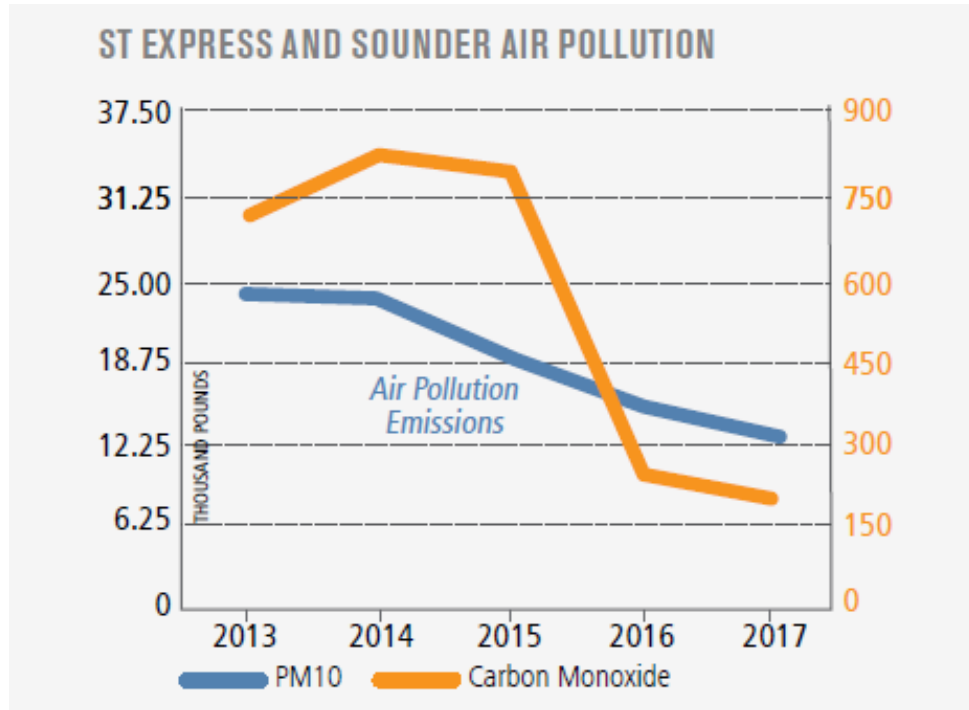


Burning **48 million**  
gallons of gasoline



# 2017 Highlight - Pollution reduction

ST Express bus and Sounder upgrades








## 2017 Reductions

PM10 – 14%

CO – 20%

# Meeting short-term sustainability goals

-  Reduce greenhouse gas emissions per vehicle by 5 percent.
-  Reduce vehicle pollution by 15 percent.
-  Decrease total energy use by 5 percent for all facilities built before 2015.
-  Divert 40 percent of office waste to recycling or compost.
-  Recycle 90 percent of construction and demolition materials.

 Work needed     On track     Goals met

\* Data normalized by passenger miles traveled.

# 2017 Highlight - Planning

- System expansion projects include allowance for green building and sustainable infrastructure
- Initiated battery electric bus feasibility study



# 2017 Highlight - Design & construction



- Angle Lake – first station to receive LEED certification (Gold).
- Piloting the ENVISION sustainable infrastructure standard.
- Requiring cleanest equipment used by prime contractors; restricting dirtiest equipment

# 2017 Highlight – Environmental Stewardship



- Maintained strong environmental compliance record
- Developing 3 mitigation projects; 10+ in pipeline

# 2017 Highlight - Operations

- Resource Conservation Manager – establishing program to focus on efficiency projects
- PSE Green Direct Program Approved 100 % clean, wind energy for Link light rail starting in 2019.  
Expanding participation with PSE and other utilities



## Green Direct – 2018

**Recommendation: expand Sound Transit's participation by enrolling all remaining PSE electricity accounts**

- 10-year power purchase agreement starting in 2021
- 32 accounts - 2.4 million kWh
- Solar energy project – South Central WA
- No capital cost
- Lowers utility rates by 5%
- Reduces agency GHG emissions from electricity by 96%

# Green Direct – 2018

## Recommendation: Authorize CEO to sign amendment letter to Green Direct – Phase 1

- Participation in Phase 2 = Lower costs for Phase 1
- Re-enroll 6 Link Light rail accounts; agreement starts 2019
- Reduces fixed annual inflation rate
- Projected savings expected 3 years earlier





# Recognition

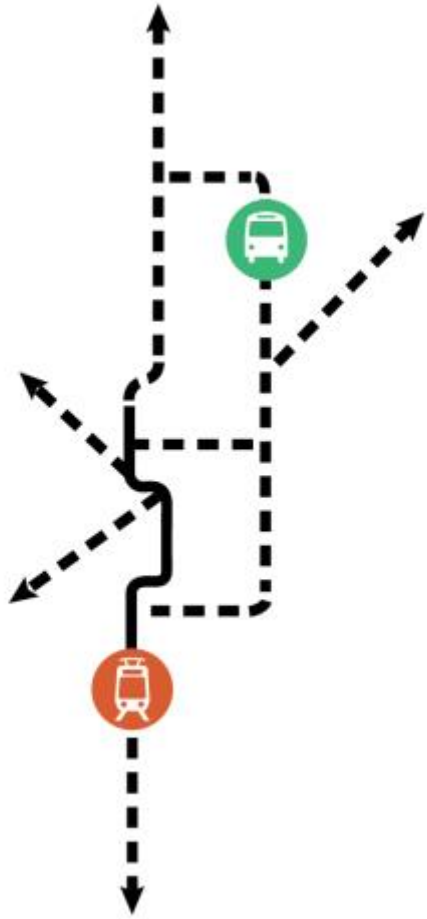


**NSF-ISR**

Certified  
to ISO 14001



# 2018 and beyond



- Updating Sustainability Plan
- Evaluating bus propulsion technology
- Developing plan for carbon neutrality and on-site renewable energy
- Expanding utility agreements
- Deepening energy conservation
- Updating Access and TOD Strategic Plans



For more @ ST Sustainability  
**[soundtransit.org/sustainability](https://www.soundtransit.org/sustainability)**

[Amy.Shatzkin@soundtransit.org](mailto:Amy.Shatzkin@soundtransit.org)

