

Enterprise Asset Management System

Status and Next Steps

Executive Committee

10/1/20

Why we are here

- To provide an overview of the agency's Enterprise Asset Management System (EAMS)
- Report on findings from a related investigative report
- Share action plan for improving processes jointly with our operating & maintenance partner King County Metro

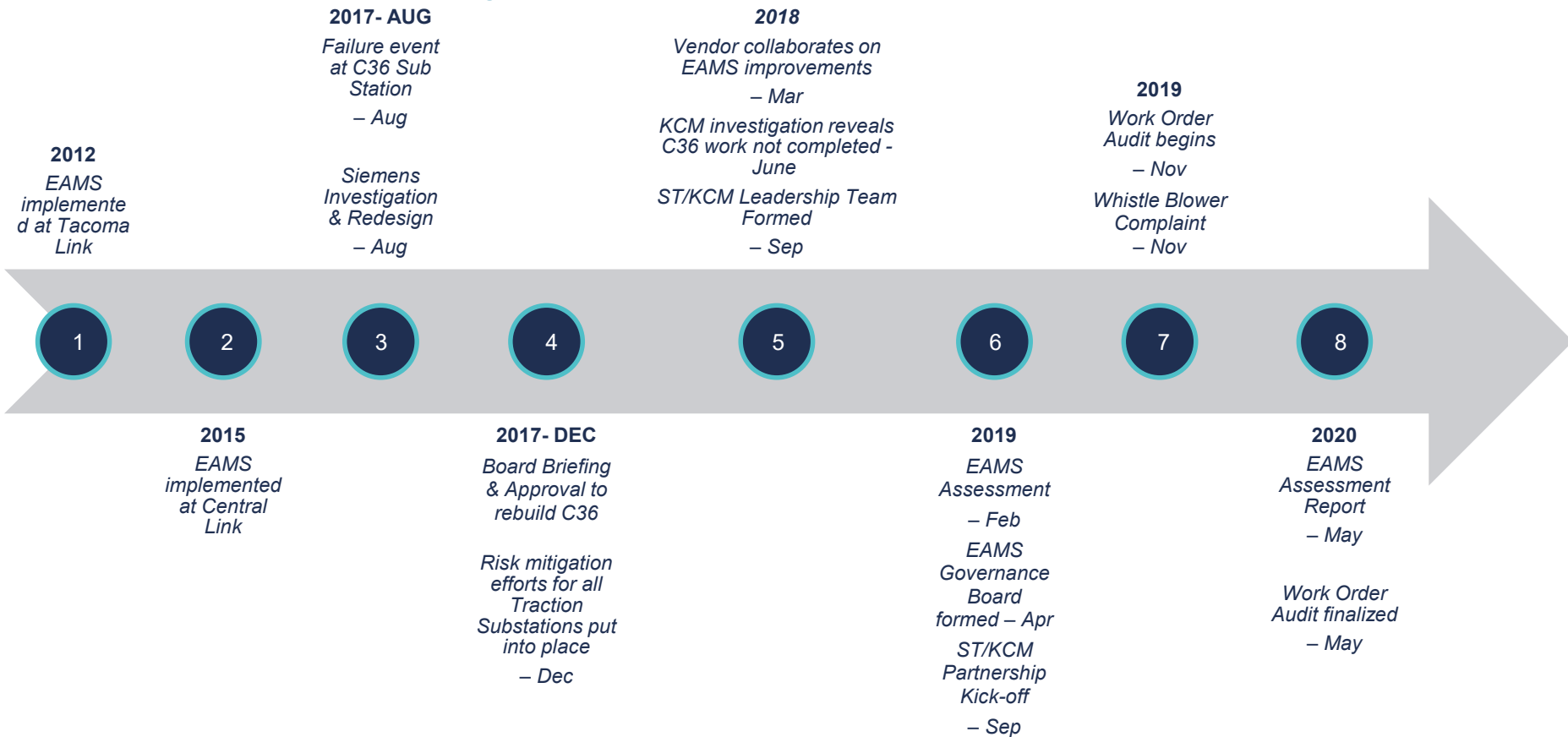
2017 Event at Tukwila Power Substation

Emphasizes the Importance of EAMS

- Loose bus bolts during annual inspection
- Correction not immediately addressed
- Catastrophic electrical failure on August 8, 2017
- Changes to EAMS and new processes are in place to mitigate potential future failures



EAMS History



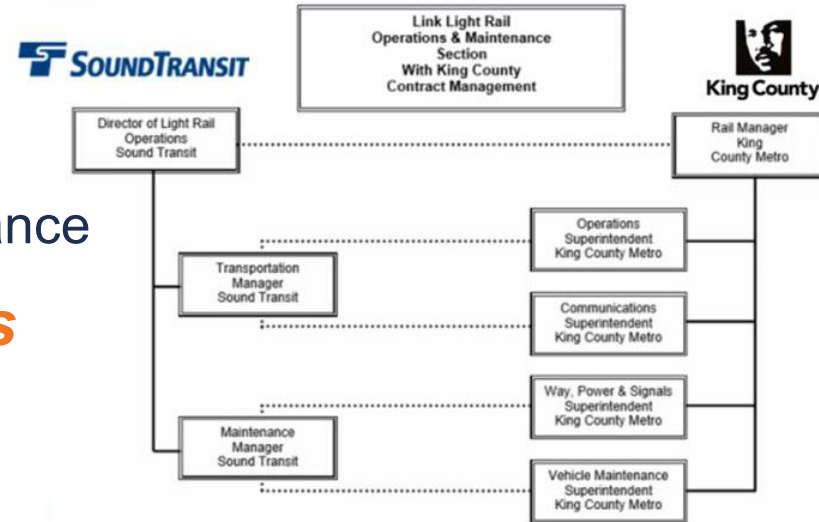
Business Model – Link light rail

King County Metro

- Light rail operations & supervision
- LRV maintenance
- ROW/Systems & Facilities maintenance

Sound Transit Responsibilities

- Policy & service planning
- Oversight of daily operations
- Risk/insurance
- Spare Parts
- Security & fare enforcement



Enterprise Asset Management System (EAMS)

Critical business information system

- Foundation for asset management and stewardship
- Work orders get generated and tracked
- Comprised of people, processes, and technology
- Designed to ensure that assets are maintained in a state of good repair and continue to deliver value for many years into the future

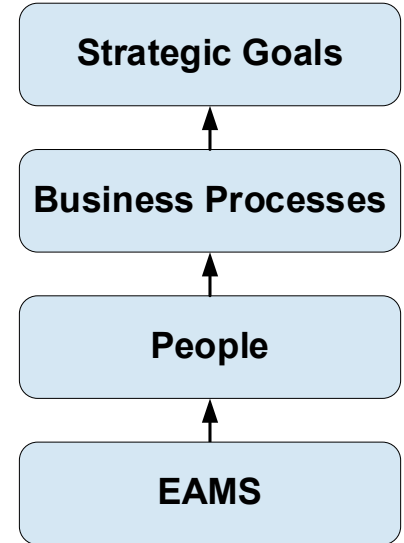
Overcoming EAMS Implementation Challenges

- Migrated King County Metro onto EAMS in 2015
- Set the foundation for improved partnership with King County Metro
- Addressed current process risk issues
- Adjusted roles and responsibilities to increase the quality of data and work flow
- In 2019, hired an outside consultant to assess EAMS and initiated an internal audit of the work order process

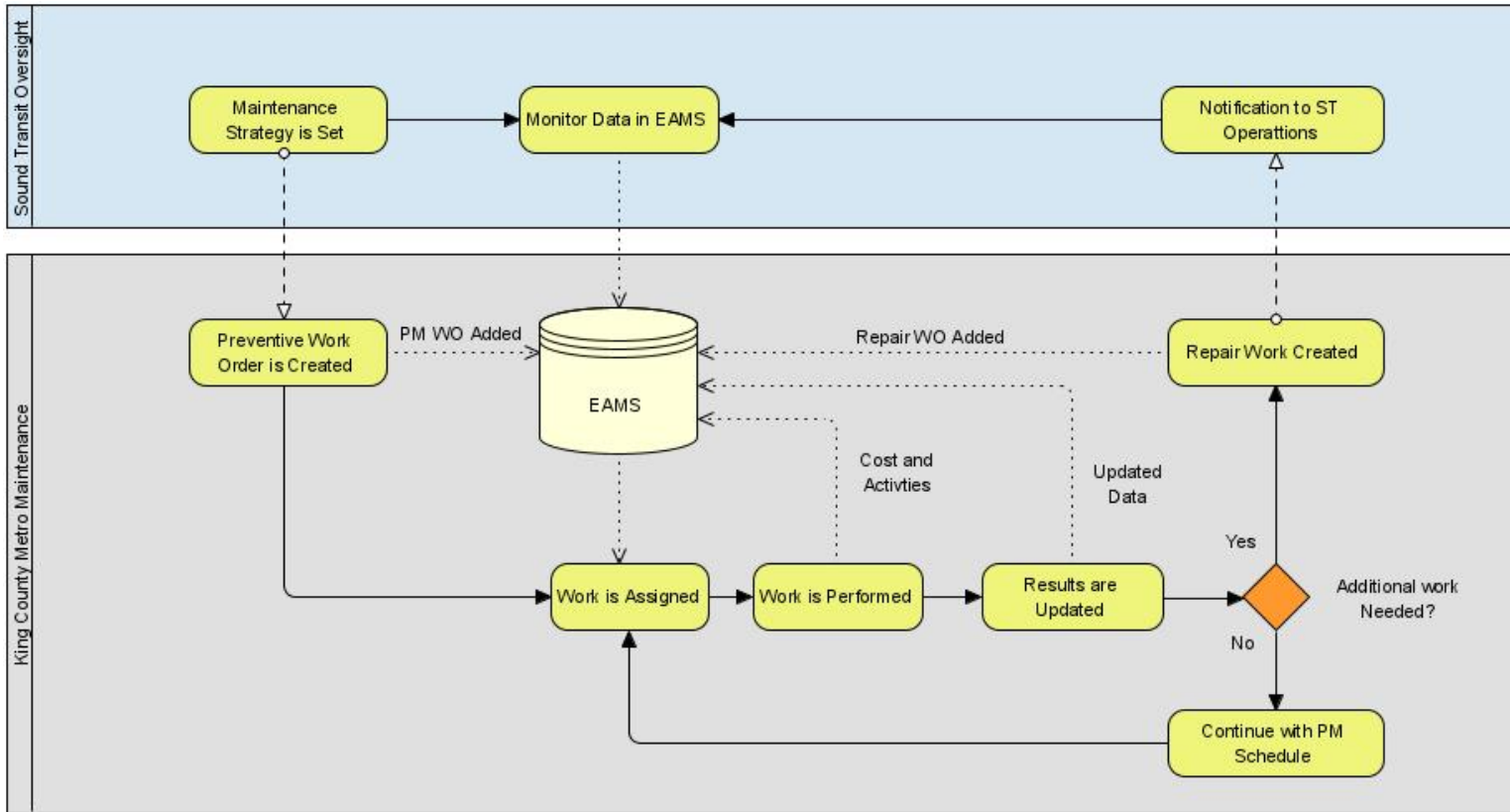
2020 Asset Management Improvements

Execution of “Best Practices”

- Began implementation of external consultant’s assessment report
- Developed short-term solutions to address issues raised from internal Work Order Process Audit
- Set-up a formal partnership with King County Metro to make robust business process improvements
- Conducted detailed analysis of business processes



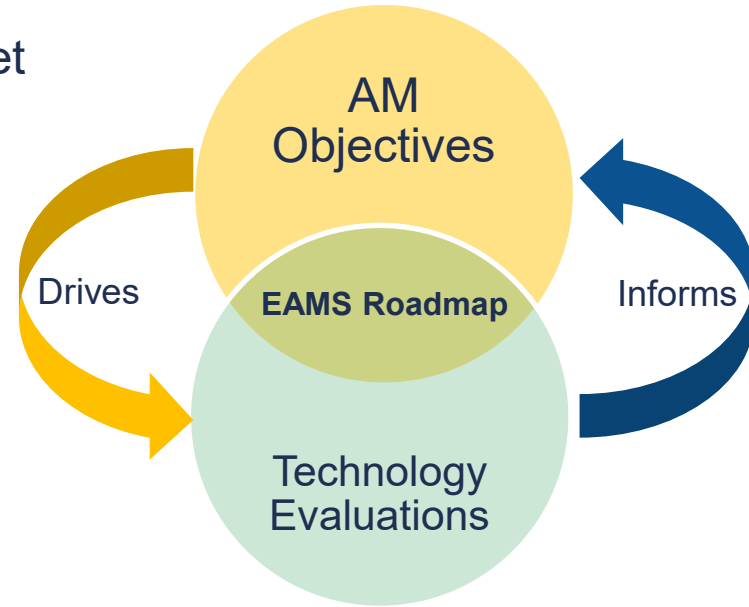
Work Order Process



A Collaborative Path Forward

EAMS Project Team is a coordinated Sound Transit and King County Metro effort

1. EAMS as the primary data source to track asset reliability and monitor system performance
2. Update staff education and training program
3. Align technology, people and processes with objectives
4. Revise the asset maintenance strategy with additional failure analysis tools
5. Establish performance measures and drive accountability
6. Create a 5-year technology roadmap



Critical Success Factors

Communication

- Communicate with all levels of the organizations

Effective Partnership

- High-level of coordination and alignment between Sound Transit and King County Metro is necessary

Staff Involvement

- Active staff participation and ideas to drive improvements and allow for ownership of recommendations

Thank you.



 [soundtransit.org](https://www.soundtransit.org)

