

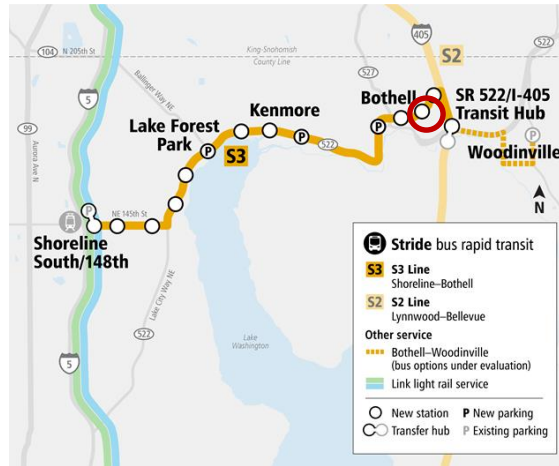
Funding Agreement with University of Washington

11/10/21

System Expansion Committee

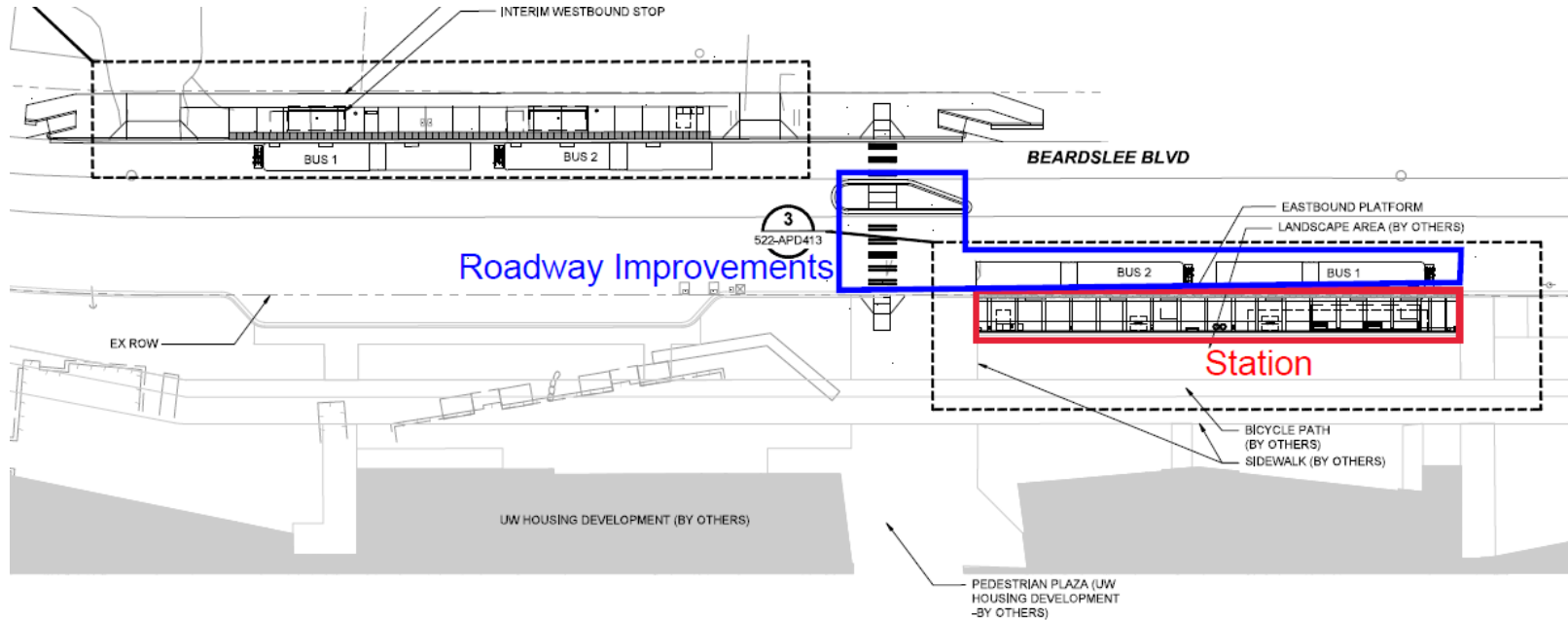
Why we are here

- Review the benefits of early construction of BRT station platform and supporting elements at UW-Bothell campus
- Action: Consider recommendation to the ST Board to execute a funding agreement with University of Washington



STRIDE

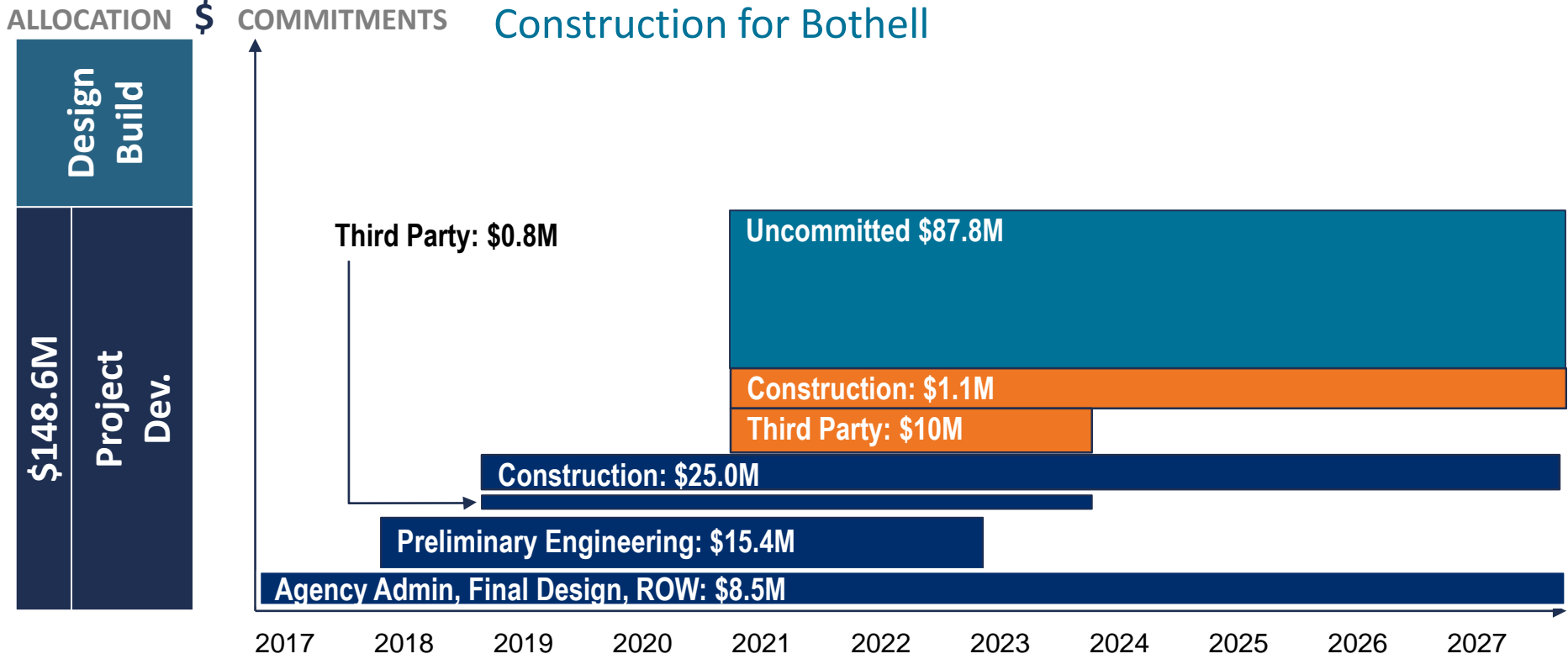
Eastbound Station Platform



Key features

- Key elements include station platform, reinforced concrete bus pad, pedestrian island, underground conduit/utility connections, and reconstruction of multi-use trail.
- UW will be responsible for constructing BRT elements in conjunction with their campus redevelopment project (to be completed in 2024)
- University will maintain ownership of land and will grant permanent (O&M) and temporary (construction) easements to Sound Transit

SR 522-NE 145th St BRT: Board approves \$10M Third Parties for Shoreline and \$1.1M Construction for Bothell



Thank you.



 [soundtransit.org](https://www.soundtransit.org)

