

Safety Department

Annual update

Board of Directors

7/28/22

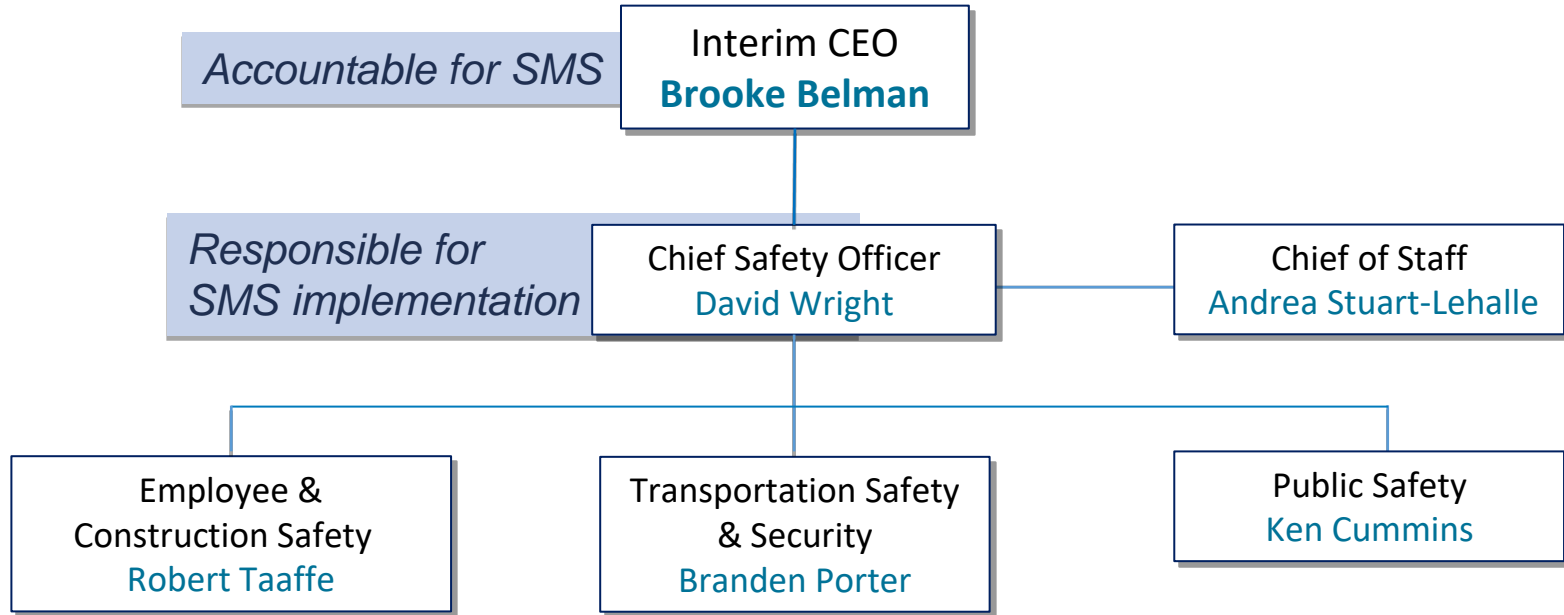


Why we are here

- Sound Transit's Safety Management System
- Safety program highlights
- Safety culture

Note: No Board action needed for the information described today.

Safety Department structure & divisions



***Sound Transit's
Safety Management System
(SMS)***

Sound Transit's SMS

How data informs our work

- Visibility to our risks
- Hazard management
- Safety assurance



***Project and program
highlights***

Public Safety

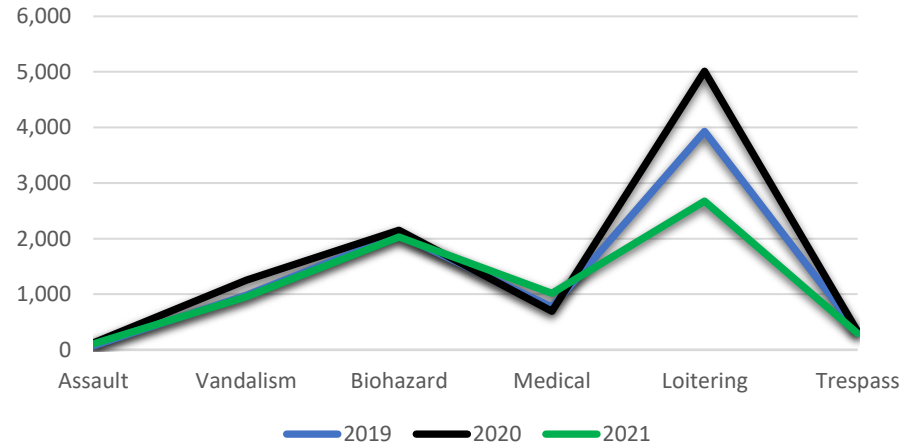
Security incidents

	2019	2020	2021
Assault	75	126	104
Vandalism	981	1,253	952
Biohazard	2,074	2,151	2,031
Medical	770	692	1,018
Loitering	3,928	5,013	2,673
Trespass	335	331	296

* Red background indicates increase over 2020

2021 = 162,000 security events
25% decrease from 2020

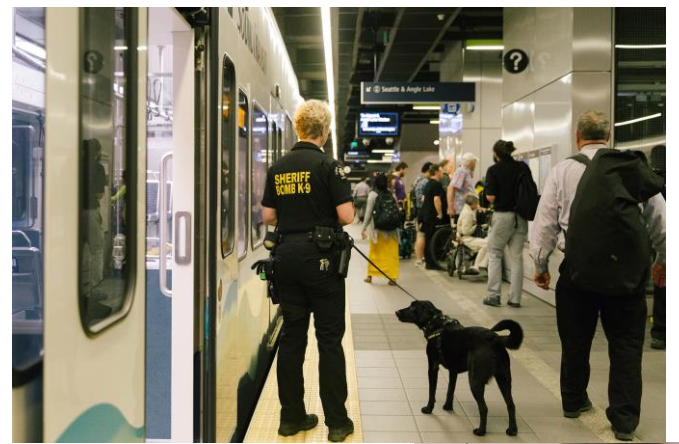
Year-over-year trends



Public Safety

Highlights and risks

- Staffing challenges
- Mount Baker
- Drug use on trains
- Active assailant & stop-the-bleed training



Transportation Safety and Security

Safety risk management

- New safety risk assessment matrix
- Nov. 26, 2021, incident

ST Risk Assessment Matrix		SEVERITY				
		Catastrophic	Critical	Major	Marginal	Negligible
PROBABILITY	Frequent	High	High	High	Serious	Medium
	Probable	High	High	Serious	Serious	Medium
	Occasional	High	Serious	Serious	Medium	Low
	Remote	Serious	Medium	Medium	Low	Low
	Improbable	Medium	Medium	Low	Low	Low
	Eliminated	Eliminated				
Resolution Requirements						

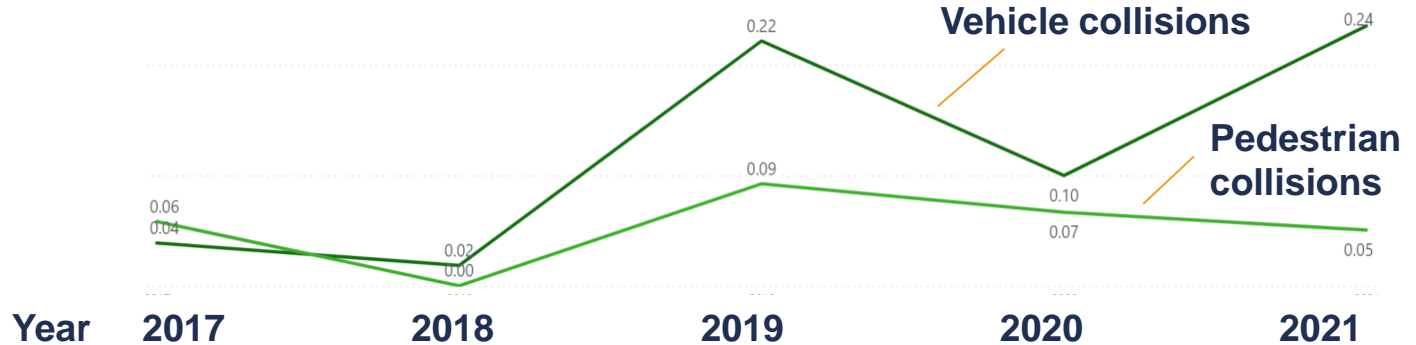
Collision data

Three-year comparative

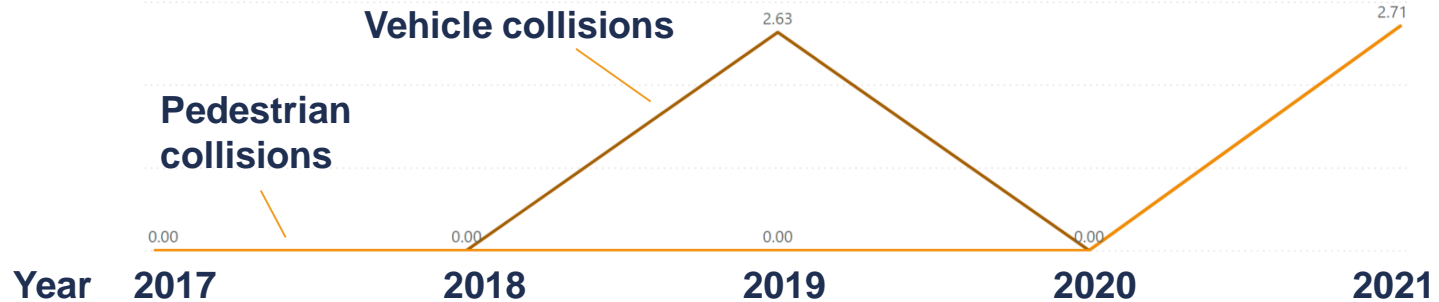
(Service)	2019		2020		2021	
	Pedestrian	Vehicle	Pedestrian	Vehicle	Pedestrian	Vehicle
Link	5	12	3	4	3	14
TLink	0	2	0	0	2	2
ST Express	2	14	4	10	4	16
Souder	4	3	4	1	2	0

2021 Collisions, rate per 100,000 VRMs

Link light rail
Vehicle .24
Pedestrian .05

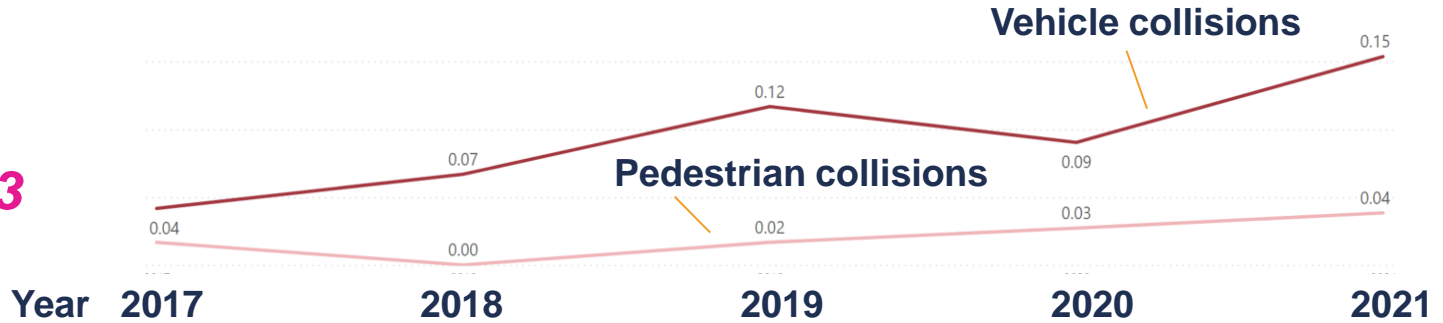


Tacoma Link
Vehicle 2.7
Pedestrian 2.7

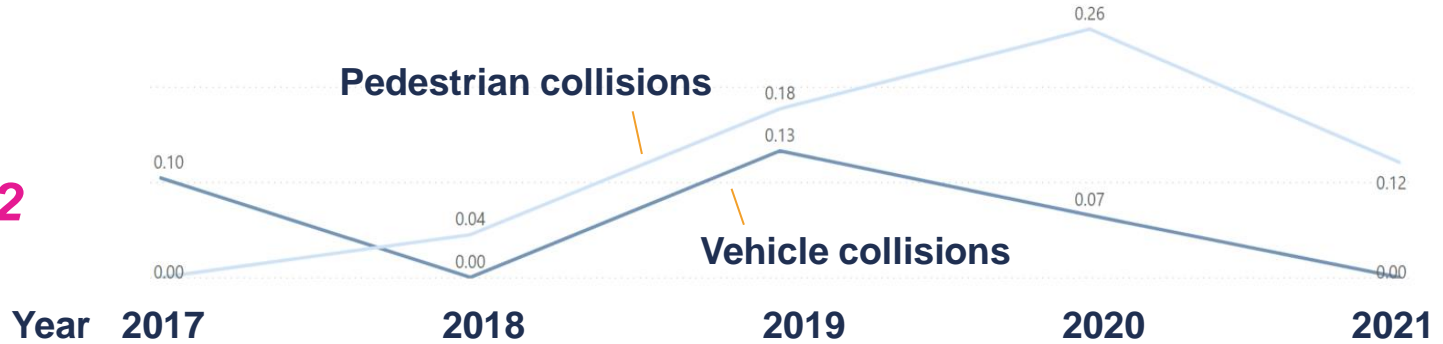


2021 Collisions, rate per 100,000 VRMs

ST Express
Vehicle .15
Pedestrian .03



Sounder
Vehicle .00
Pedestrian .12



At-Grade Crossing Program

Progress update

- Gathered feedback, including meetings with community organizations
- Planned future engagement and communication activities
- Established meeting forums with partner agencies
- SODO MLK Hazard Mitigation Work progress



Construction and Employee Safety data

4.2 Million labor hours documented in 2021

	2020		2021	
	Sound Transit	Contractor	Sound Transit	Contractor
Recordable injury rate (RIR)				
	0.10	1.89	0.10	2.02
WA state	2.9	5.7	2.9	5.7
National	4.5	2.8	4.5	2.8
Lost time injuries				
	0.00	0.20	0.10	0.23
WA state	1.9	2.8	1.9	2.0
National	3.0	2.5	3.0	2.5

Employee Safety

Employee Safety Reporting Tool

- Critical for successful SMS
- Linked on Agency Employee homepage and in daily Safety messages
- Feedback loop for receipt and status

Return-to-work lunch & learns/training

Safety culture

Safety culture

Building a strong agency safety culture

- Safety Culture Survey
- Safety Month activities
- Safety News Link
- Employee Safety Reporting Tool
- Weekly Safety walks
- Ongoing collaboration

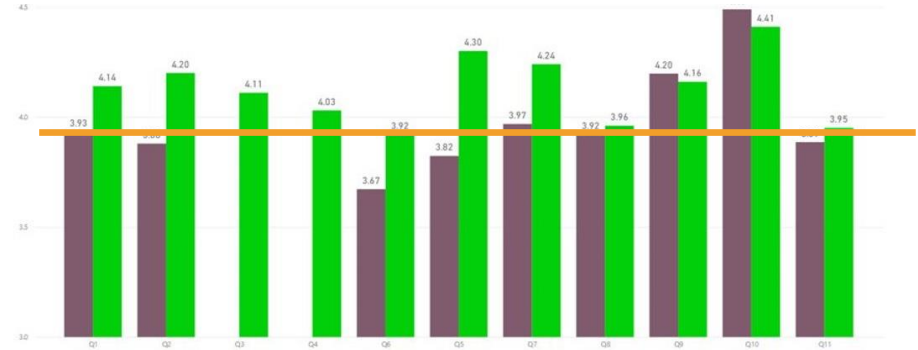


Annual Safety Culture Survey

Progress from 2020 to 2021

- Engagement
- Prepared, equipped and trained
- Effective, accountable and transparent
- Collaborative and respectful

238 responses
10 departments



Thank you.



 [soundtransit.org](https://www.soundtransit.org)

