

Everett Link Extension & OMF North Briefing

Board of Directors

05/25/2023



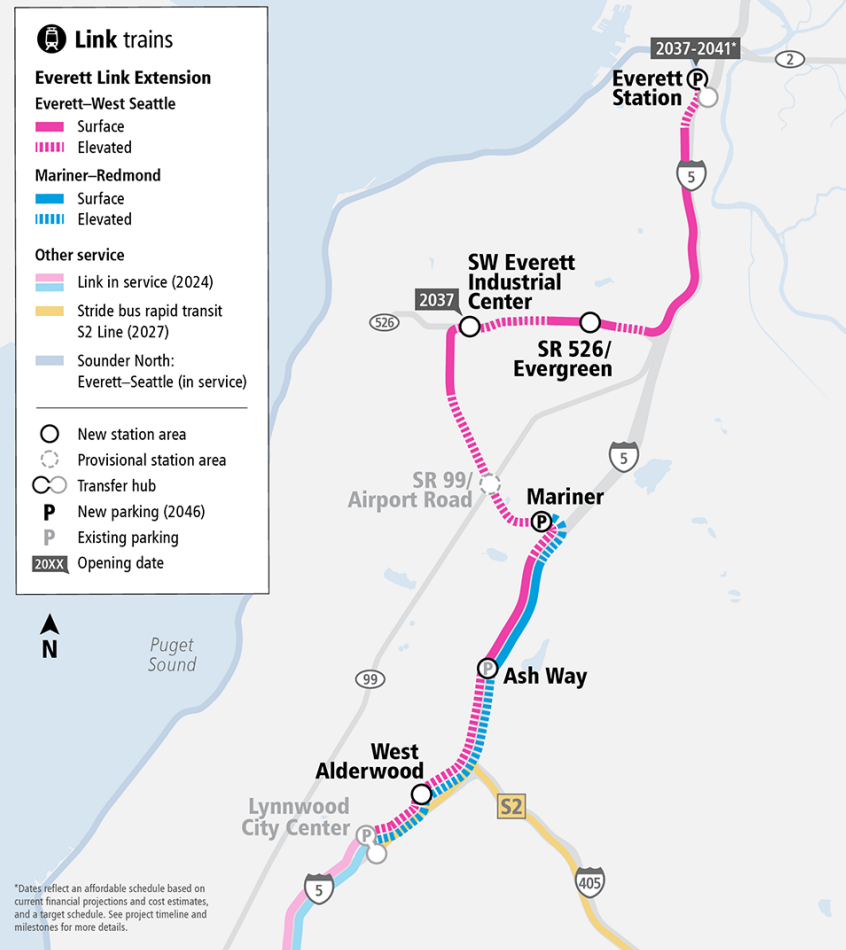
Why we are here

- Update on EVLE and OMF North Scoping comments in anticipation of June Board action identifying alternatives to study in the Draft EIS
- Consider Community Advisory Group and Elected Leadership Group recommendations.
- Review staff recommendations for some sections, requested by the Board
- No action today.

Everett Link Extension

ST3 Representative Project

- **Length:** 16 miles
- **Stations:** six plus one provisional (unfunded) station
- **Target schedule:** 2037
- **Affordable schedule:** 2037/2041
- **New parking** at Everett Station and Mariner opens 2046






Operations and Maintenance Facility North

Facility supports EVLE and system-wide expansion needs

- **Capacity:**
 - Store, maintain, and repair vehicles
 - 150+ light rail vehicles
 - 450+ high skilled, living wage jobs
- **Affordable and Target Schedules: 2034**



Project Performance Tracker Status

Cost Risk 	Schedule Risk (to next milestone) 	Schedule Risk (to delivery date) 
------------------------------------------------------------------------------------------------	---------------------------------------------------------------------------------------------------------------------------	----------------------------------------------------------------------------------------------------------------------------

Cost Risks

- Comparative cost estimates are within an acceptable range; QRA held in Q1 2023.
- Unknown engineering challenges over lengthy and varied geography with limited design.
- Unknown ROW needs in early design.

Schedule Risks

- Emerging risks due to delays to environmental review process with 3rd parties.
- Potential delay to accommodate engineering challenges over lengthy and varied geography.
- RE acquisition risks due to yet unknown ROW needs.
- Design-Bid-Build delivery assumed. Change to delivery method may impact schedule.

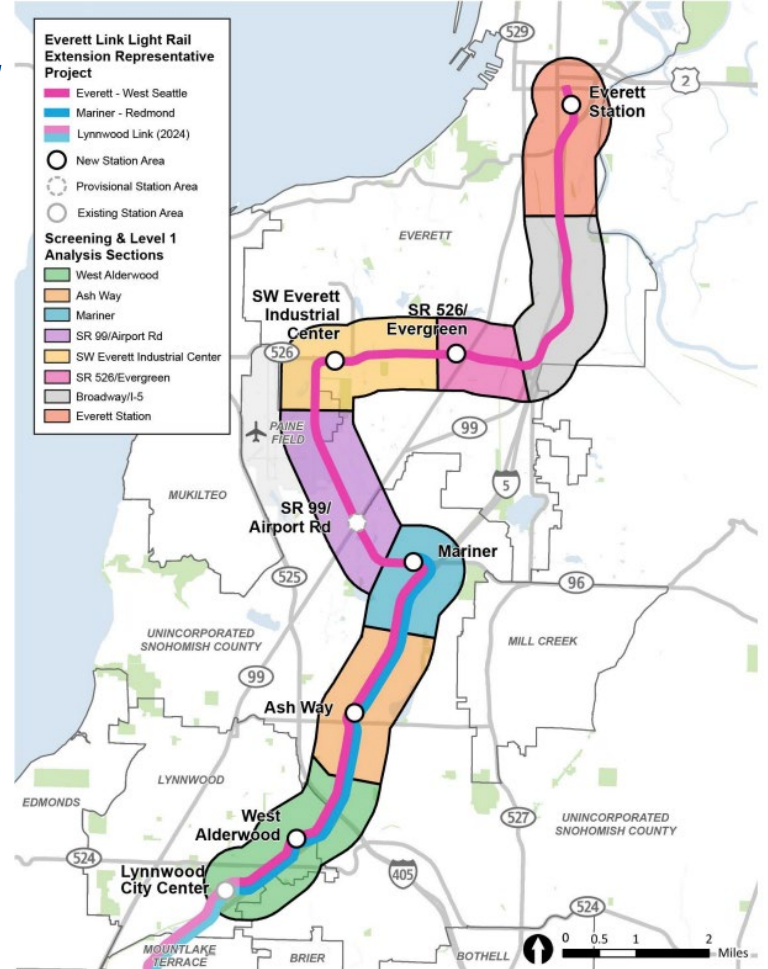
Scoping Comment Period

Jan 23 – Mar 10

- 3 virtual meetings: 127 attendees
- In-Person meeting: over 1,600 attendees
- Targeted briefings & community tabling
- Received approximately 1,200 communications

Project Sections

- Project divided into 8 sections for evaluation.
- Generally, each section includes all station alternatives for one station area and associated route alternatives.

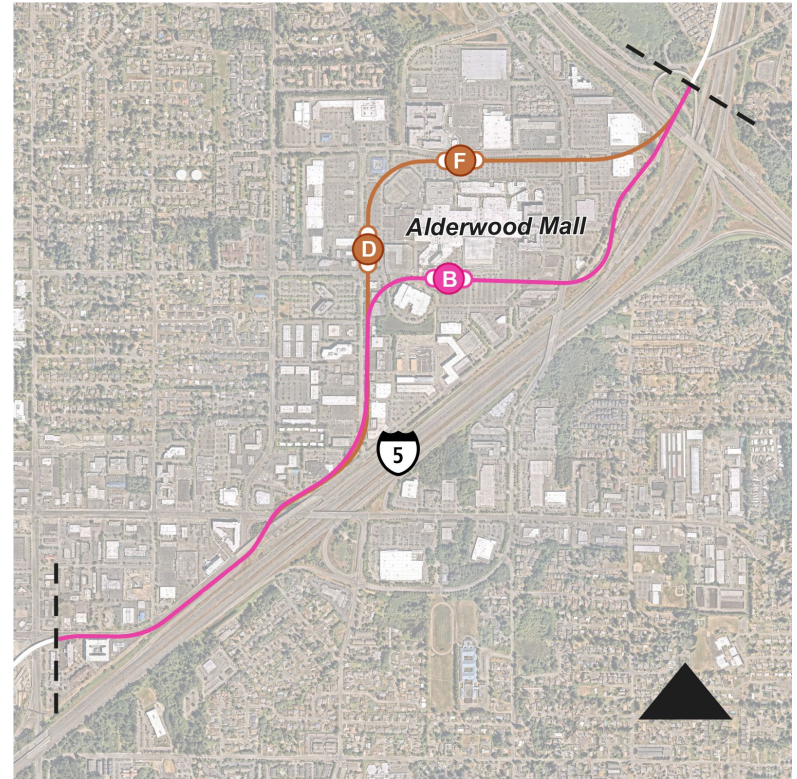


West Alderwood

Recommendations

	CAG	ELG
B	Remove from study	Remove from study/continue if needed*
D	Preferred	Preferred
F	Continue study	Continue study

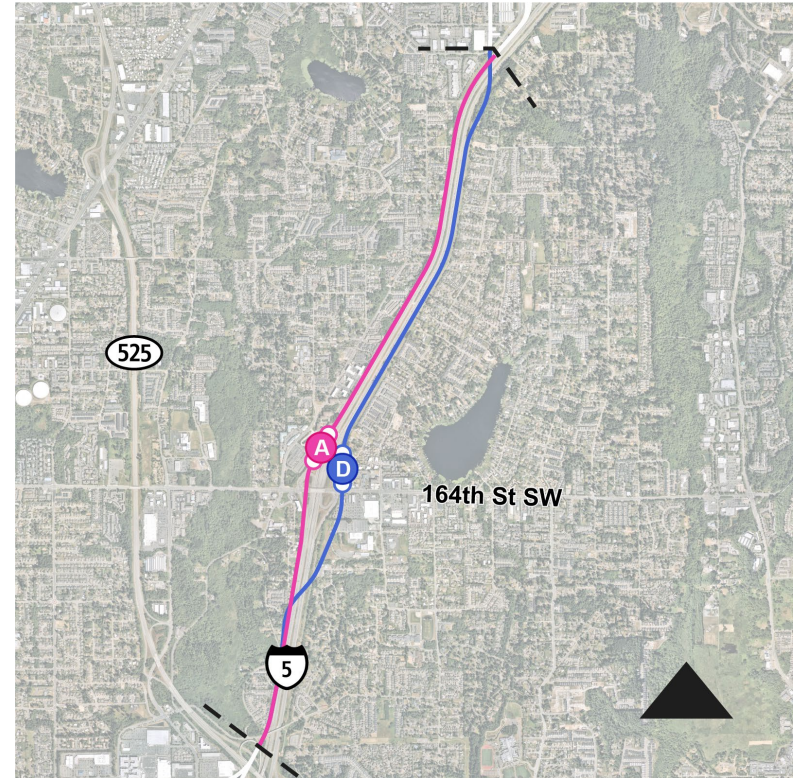
*ST staff recommends continuing to study Station B to minimize risk of only one alignment evaluated in the Draft EIS



Ash Way

Recommendations

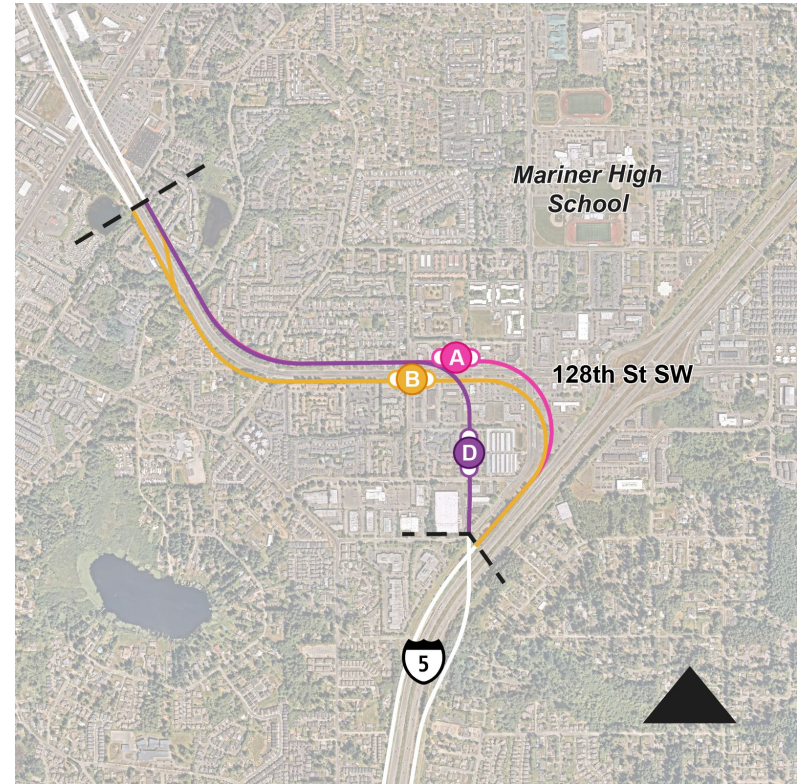
	CAG	ELG
A	Continue study	Continue study
D	Preferred	Continue study



Mariner

Recommendations

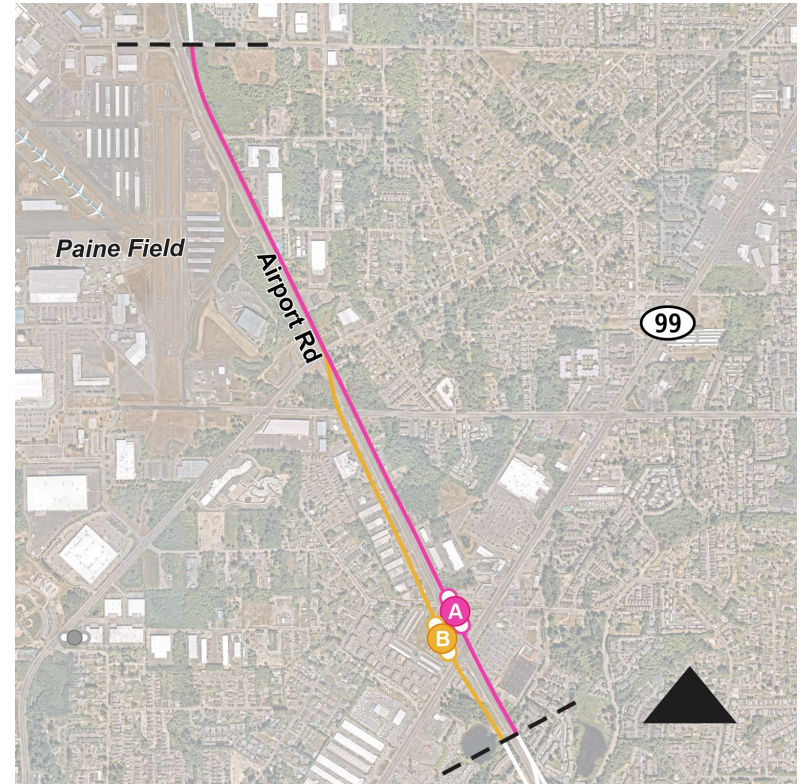
	CAG	ELG
A	Remove from study	Remove from study
B	Preferred	Continue study
D	Continue study	Continue study



SR 99/Airport Road

Recommendations

	CAG	ELG
A	Preferred	Continue study
B	Continue study	Continue study

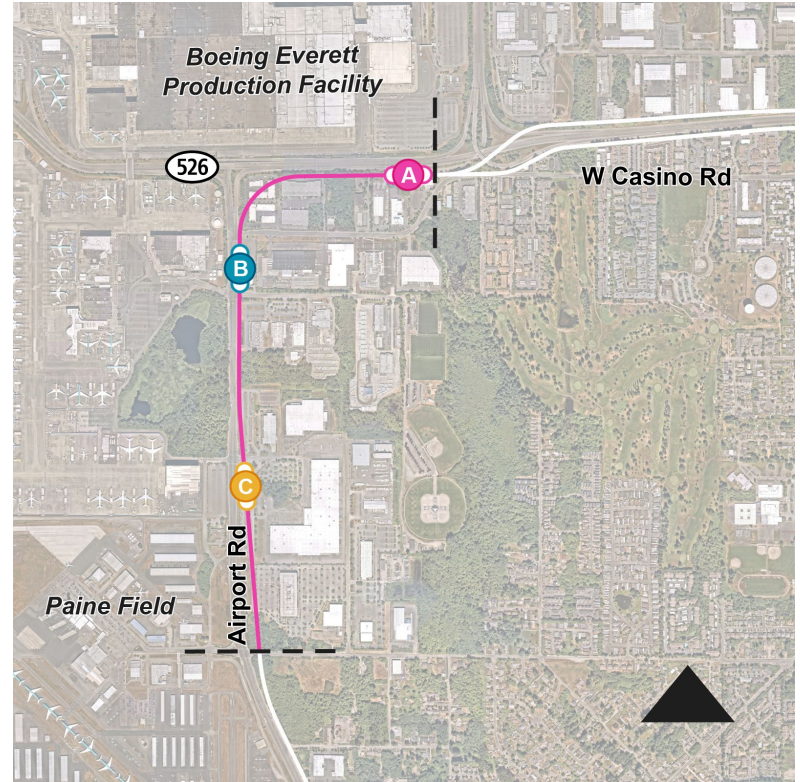


SW Everett Industrial Center

Recommendations

	CAG	ELG
A	Mixed	Preferred
B	Mixed	Continue study
C	Mixed	Remove from study/continue if needed*

*ST staff recommends continuing to study Station C to retain multiple station options evaluated in the Draft EIS

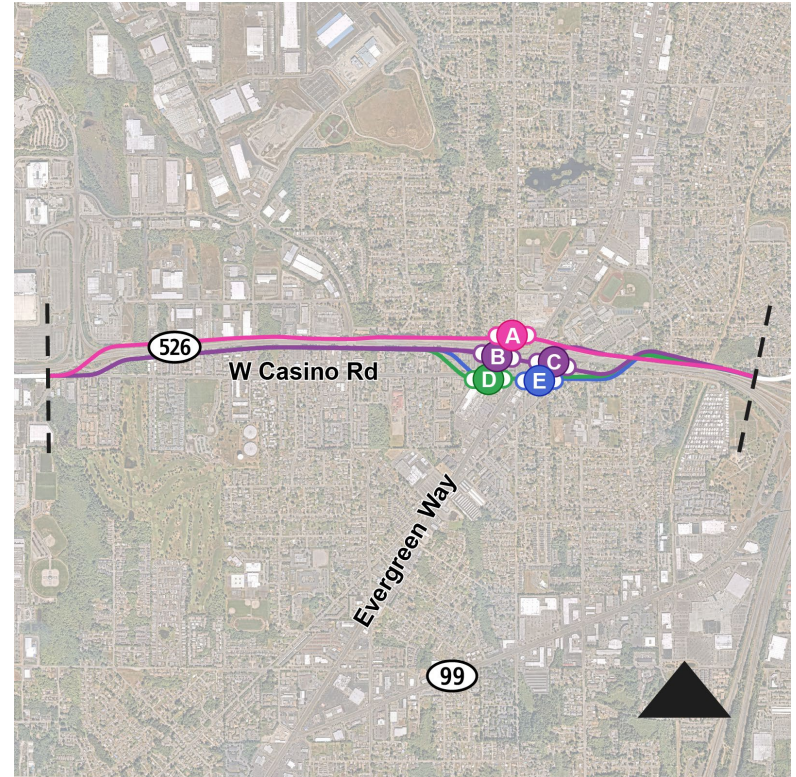


SR 526/Evergreen

Recommendations

	CAG	ELG
A	Mixed	Continue study
B	Continue study	Continue study*
C	Remove from study	Remove from study
D	Continue study	Remove from study
E	Continue study	Continue study*

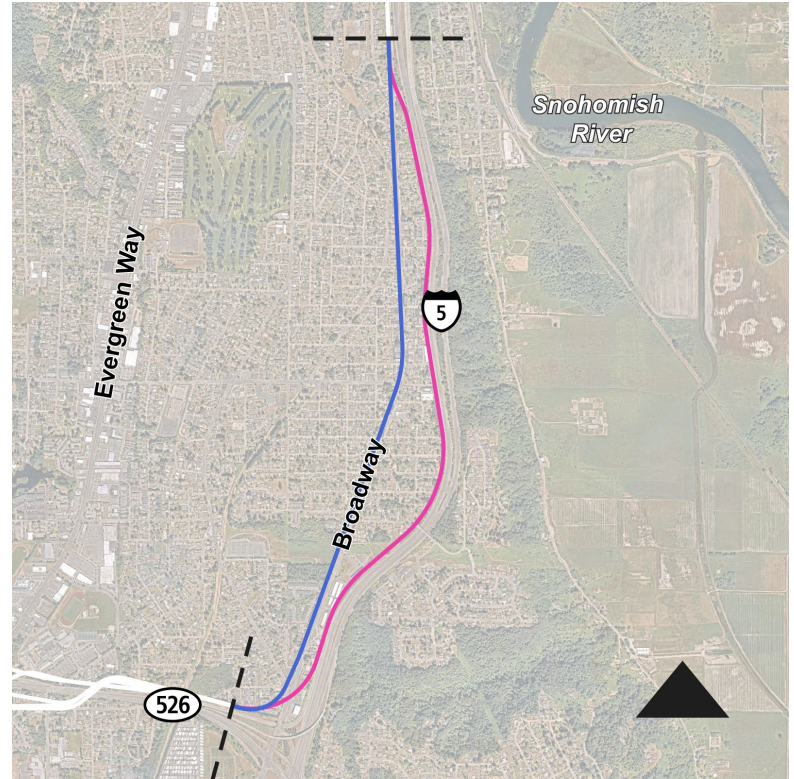
*The ELG recommended a station and alignment south of SR-526 as the preferred alternative.



I-5 / Broadway Alignment

Recommendations

	CAG	ELG
I-5	Preferred	Preferred
BRD	Continue study	Continue study

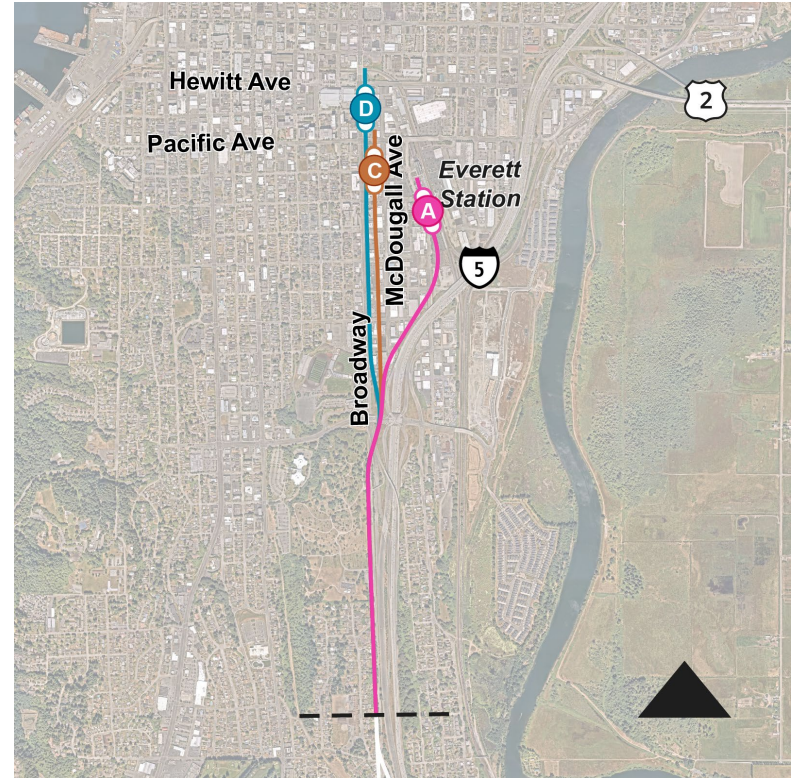


Everett Station

Recommendations

	CAG	ELG
A	Remove from study	Continue study*
C	Continue study	Preferred
D	Preferred station on C alignment	Preferred station on C alignment

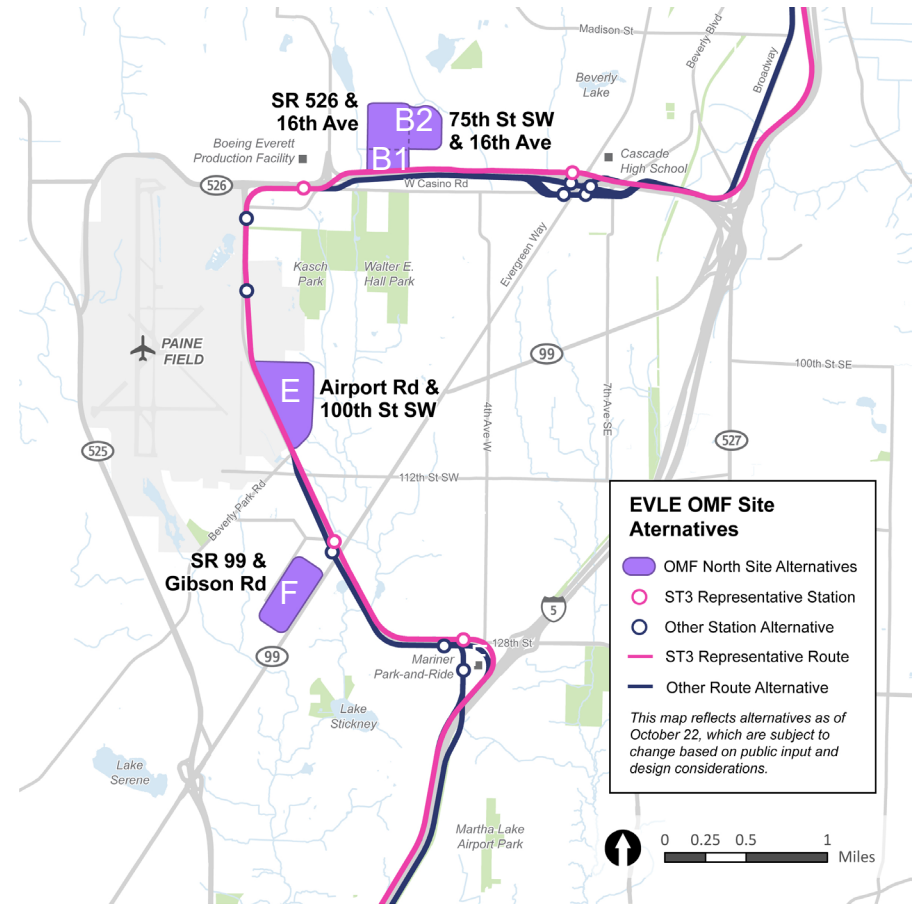
*The ELG recommended a revised Station A that avoids impacting Everett Station



OMF North

Recommendations

	CAG	ELG
Site B1	Continue study of a hybrid location of Sites B1 and B2	Continue study of a hybrid location of Sites B1 and B2
Site B2		
Site E	Continue study	Continue study
Site F	Continue study	Continue study



Next steps

June 2023

- System Expansion Committee recommendation to the Board of Directors on alternatives to study in the Draft EIS and possibly a preferred alternative
- Board of Directors identification of alternatives to study in the Draft EIS and possibly a preferred alternative

Thank you.



 [soundtransit.org](https://www.soundtransit.org)

