

S Graham St and S Boeing Access Rd Infill Stations

Project Development Contract Approval

System Expansion Committee

11/09/23

Why we are here

Motion No. M2023-101

- Project Development Services contract award for S Graham St and S Boeing Access Rd Infill Station projects.

Project Overview

Project History

1996

Sound Move Plan

- S Boeing Access Rd included
- S Graham St not included

1999

Central Link EIS

- Both stations evaluated (1998 Board Motion identified S Graham St to be evaluated)

1999-2001

Station Deferrals

- Both Link stations deferred

2001

Sounder Removal

- Sounder Boeing Access Rd Station removed from Sound Move Plan

2016

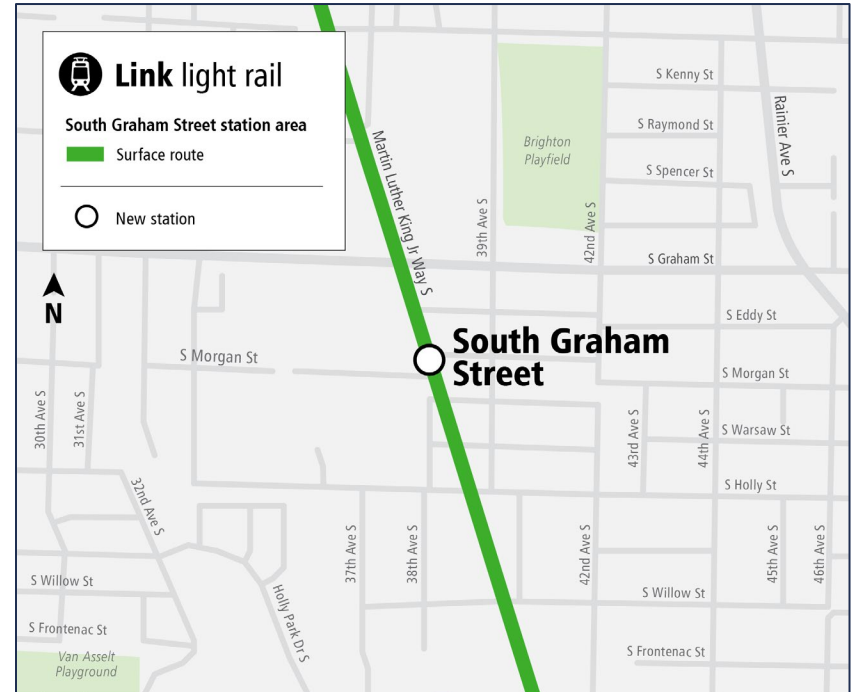
ST3 Ballot Measure

- Graham and BAR Link stations included
- Sounder BAR station not incl.

S Graham St Infill Station Project

Project Overview

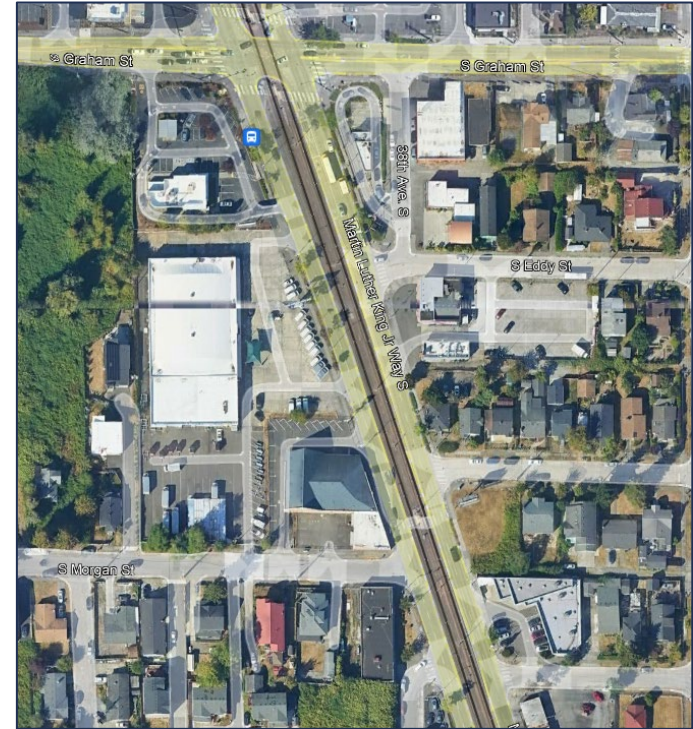
- Adds new at-grade station on MLK Jr Way S between S Graham St and S Morgan St along existing 1 Line
- Bridges the gap between Columbia City and Othello stations
- Increases light rail access in the Rainier Valley



S Graham St Infill Station Project

Key Project Elements

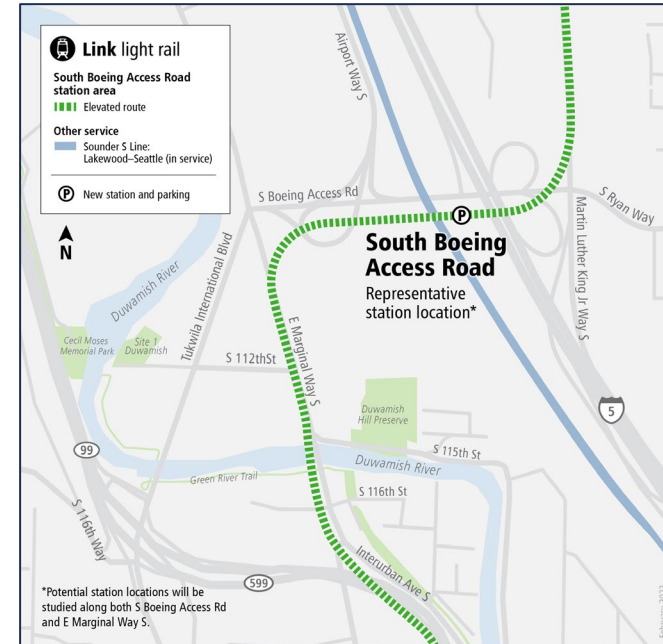
- Sound Transit 3 (ST3) planning assumed a station location south of S Graham St
- Modifications to MLK/Graham intersection
- Access, safety, and utility work near station



S Boeing Access Rd Infill Station Project

Project Overview

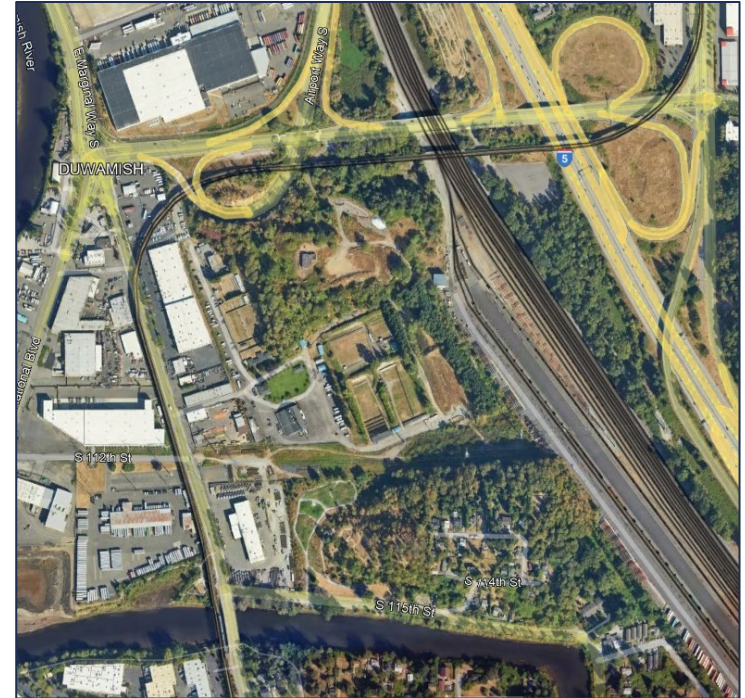
- Adds new elevated station in the vicinity of S Boeing Access Rd, E Marginal Way, and I-5 along existing Link 1 Line
- Bridges the 5.5-mile gap between Rainier Beach and Tukwila International Boulevard stations
- Provides connections to North Tukwila and Duwamish Manufacturing/Industrial Centers
- Increases light rail access in southern Seattle and northern Tukwila neighborhoods



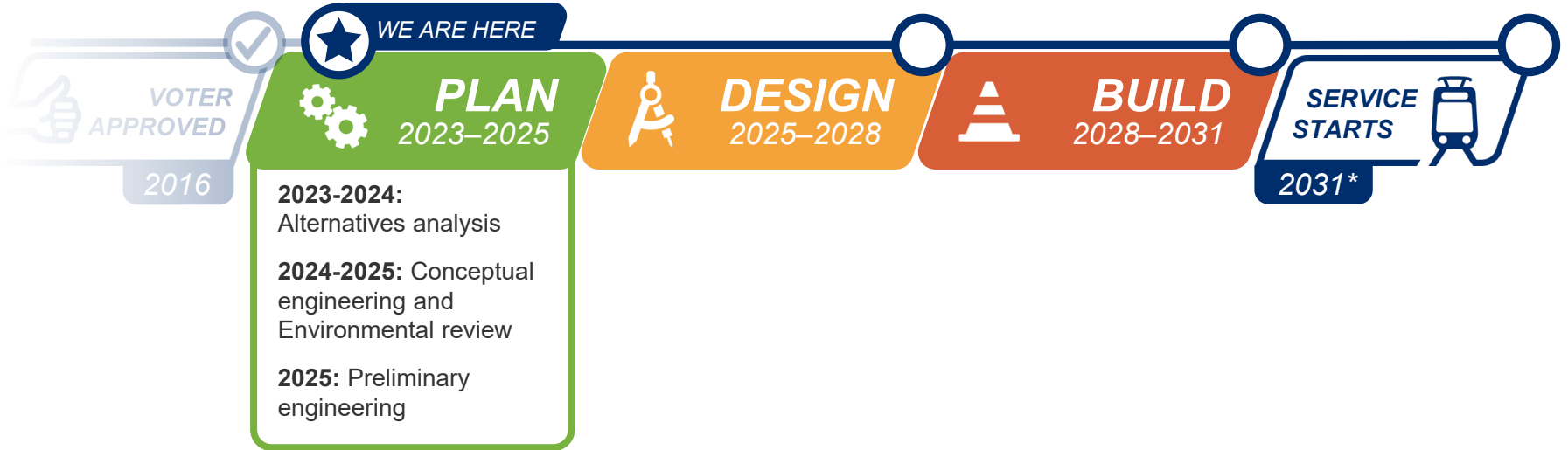
S Boeing Access Rd Infill Station Project

Key Project Elements

- Elevated station with side platforms
- Bus transfer and layover facility
- 300-stall at-grade parking lot
- Access, safety, and utility work near station



Timeline



2023-2024 Activities

- December 2023 – Begin Alternatives Analysis
- Q3 2024 – Complete Alternatives Analysis
 - ***Board identifies Preferred Alternative***
- Q3 2024 – Begin Conceptual Design/Environmental Review

Today's Action

Today's Action

Motion No. M2023-101 Project Development Services Contract Award for the S Graham St and S Boeing Access Rd Infill Station projects

The total authorized contract with Kimley-Horn & Associates, Inc is \$6.7M, and includes an option for Phase 3, Preliminary Engineering.

Key Features of this Action

Phase 1 (this action)

- Identify and evaluate alternatives
- At the conclusion of Phase 1, the Sound Transit Board will identify the preferred alternative to advance into environmental review.

Phase 2 (this action)

- Advance engineering to approximately 10% design.
- Prepare environmental review documents.

Phase 3 (future action)

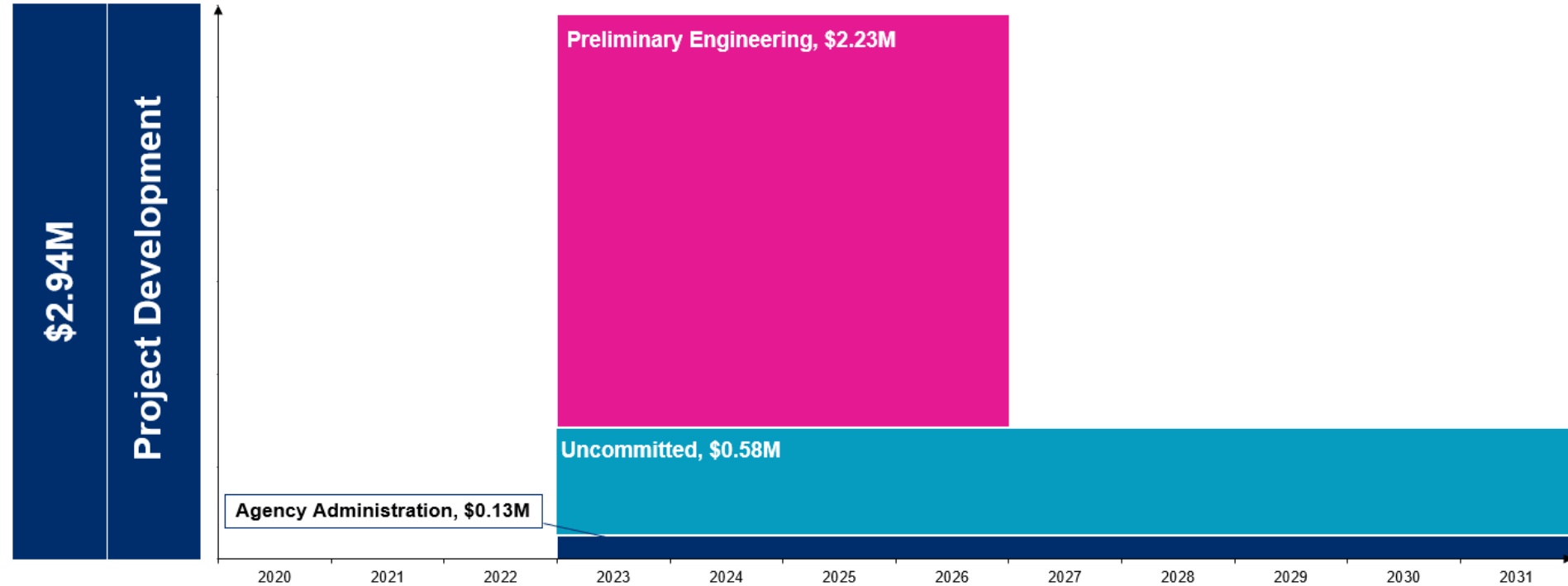
- Advance engineering to approximately 30% design.

Graham and Boeing Access Rd Stations - Affordability

- The most recent cost estimate for the S Graham St Infill Station project is \$118 million in 2023\$. The most recent cost estimate for the S Boeing Access Rd Infill Station project is \$261 million in 2023\$. Both projects are affordable within the Agency's Finance Plan.
- Staff are managing the projects toward a 2031 delivery, consistent with both Affordable and Initial Target Schedules.
- This action is consistent with the schedule and financial plan adopted by the Board in Resolution No. R2021-05, and does not impact the affordability of any other system expansion project.

S Graham St. Infill Station: Board approves Kimley-Horn & Associates, Inc. PE contract

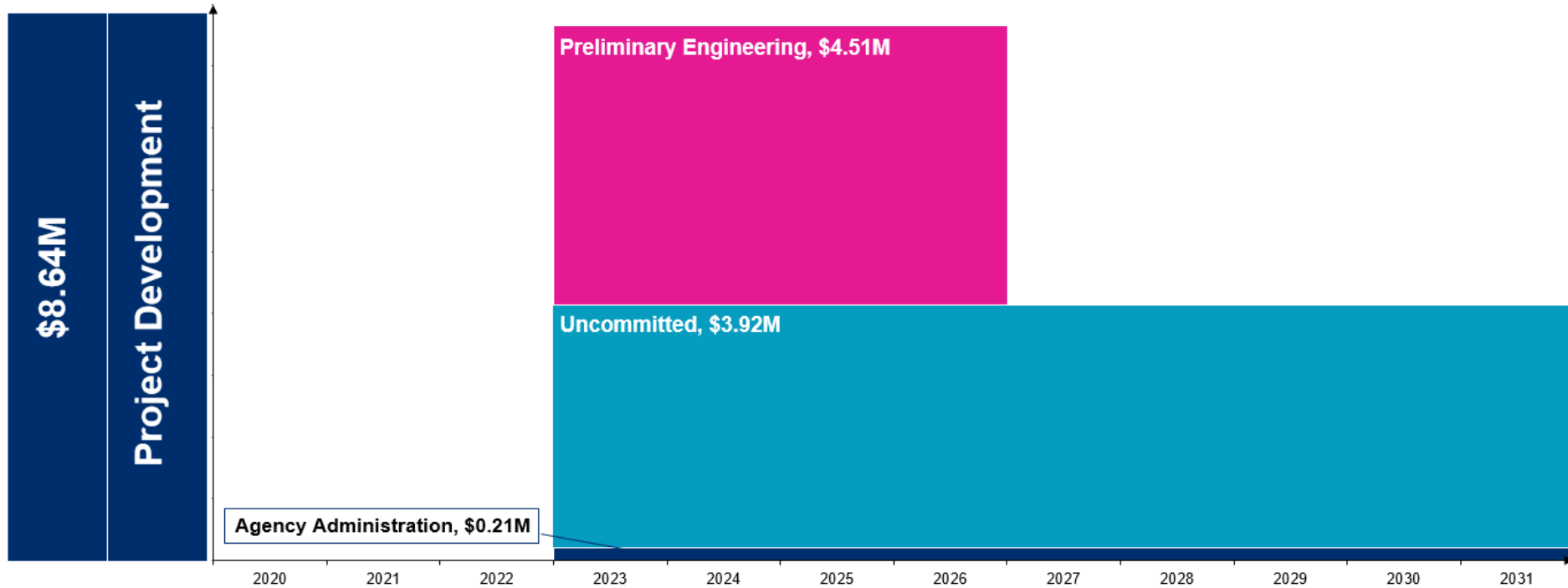
ALLOCATION \$ COMMITMENTS



Illustrative - Not to Scale

\$ Boeing Access Rd. Infill Station: Board approves Kimley-Horn & Associates, Inc. PE contract

ALLOCATION \$ COMMITMENTS



Thank you.



 [soundtransit.org](https://www.soundtransit.org)

