



Update on projects in construction

System Expansion Committee
07/13/23



Why we're here

Quarterly Update on Projects in Construction

- *Construction status*
- *Risks, challenges & mitigations*
- *Possible opening timeframes*
- *Next steps*

Briefing only, no action required today.

Hilltop Tacoma

Hilltop Tacoma

Project status

- Issued partial substantial completion for the construction contract on July 11th, 2023.
- Conditionally Accepted four of the five LRVs with accepted work-arounds
- Pre-revenue Phase began today

Project risks and mitigations

- Address any new issues identified during Pre-Revenue Phase; daily review of issues and on-call team resources to quickly respond.
- Successfully complete all requirements ahead of Revenue Service
- Anticipate construction contract claim



***Scheduled opening timeframe:
September 2023***

East Link

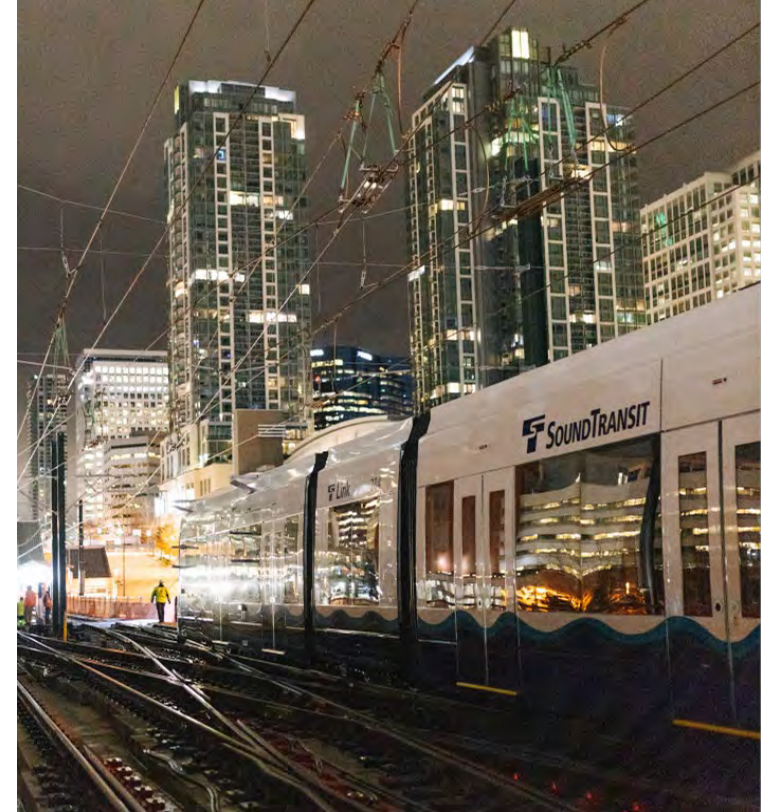
East Link Starter Line

Project status:

- Ongoing system testing with light rail vehicles
- Station finishes nearly complete
- Pedestrian crossing safety enhancements underway
- Recently resolved construction claims

Project risks and mitigations

- Follow-on work (guard rails and fencing) – nights/weekends
- Bellevue Station Stair Pressurization – Developing alternatives if circuit breaker is further delayed beyond planned delivery in August
- BMS upgrades & PIMS installation – frequent meetings with vendor to monitor work
- Replacement of platform tiles at South Bellevue Station – accelerate work



East Link (I-90 Corridor)

Project Status

- Concrete track plinth demolition 90% complete
- Concrete track plinth reconstruction 24% complete
- Planned completion 42% based upon April schedule

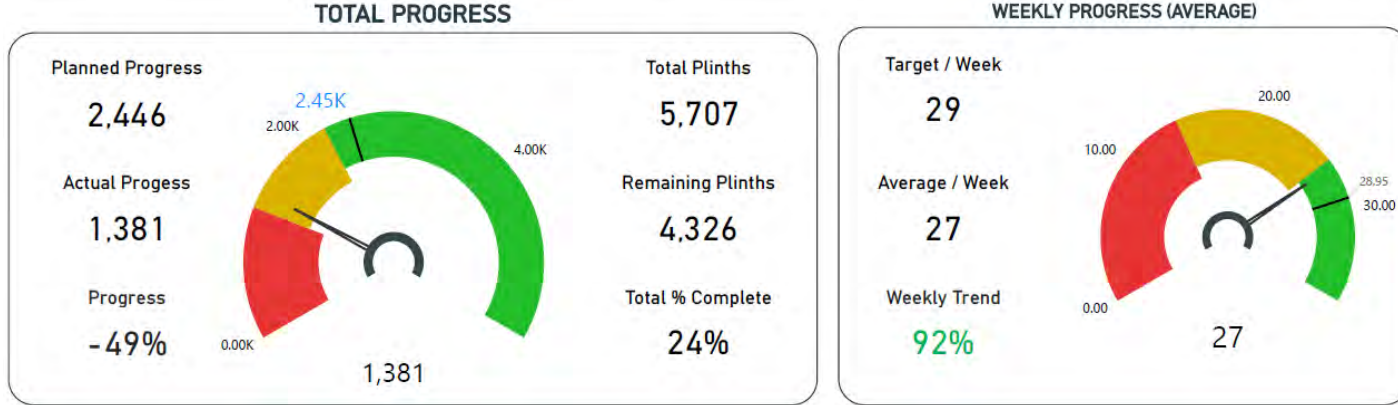
Project risks and mitigations

- Track reconstruction progressing at 42% of planned rate – contractor has brought on additional field supervisors and increased craft labor to more than 350 persons.
- Ongoing post-tension cable investigation on D2 structure and floating bridge approaches



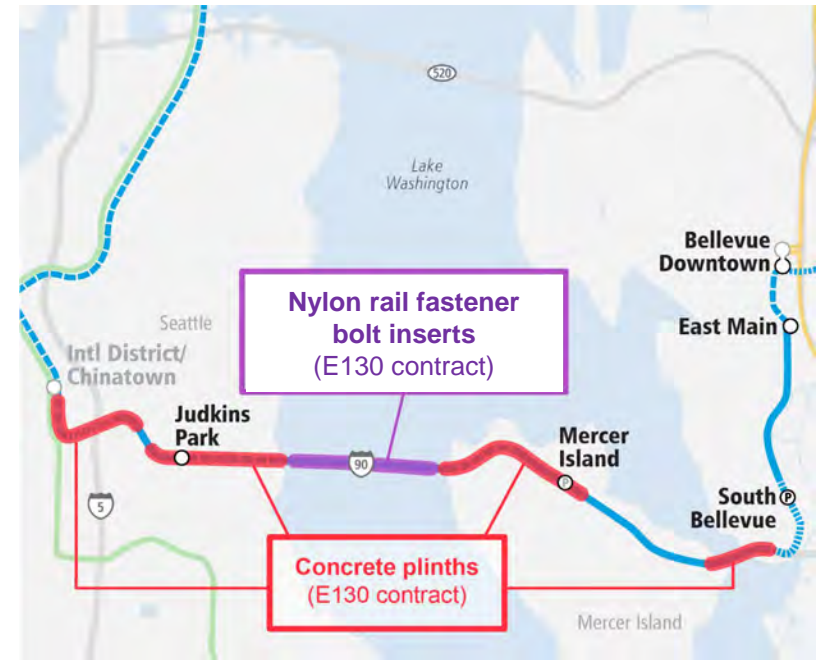
East Link (I-90 Corridor)

Plinth Rebuild Status



Location	Sum of Total Track Feet	As-Planned - CPM/KPI	% Complete PLANNED	As-Built	% Complete AS-BUILT
Roadway	7,256	4,640	64%	1,917	26%
East Approach	4,807	-	0%	-	0%
East Channel Bridge	5,578	4,081	73%	1,008	18%
Judkins Park Station	3,233	2,086	65%	622	19%
Mt. Baker Tunnel	7,526	4,140	55%	2,089	28%
Mercer Island Station	2,137	2,137	100%	190	9%
Mercer Island Tunnel	5,971	4,764	80%	3,434	58%
West Approach	4,401	-	0%	-	0%
Total	40,909	21,848	53%	9,260	23%
	% (Actual VS Project Total)	23%			
	% (Actual VS Planned)	42%			

As of July 10, 2023



Downtown Redmond

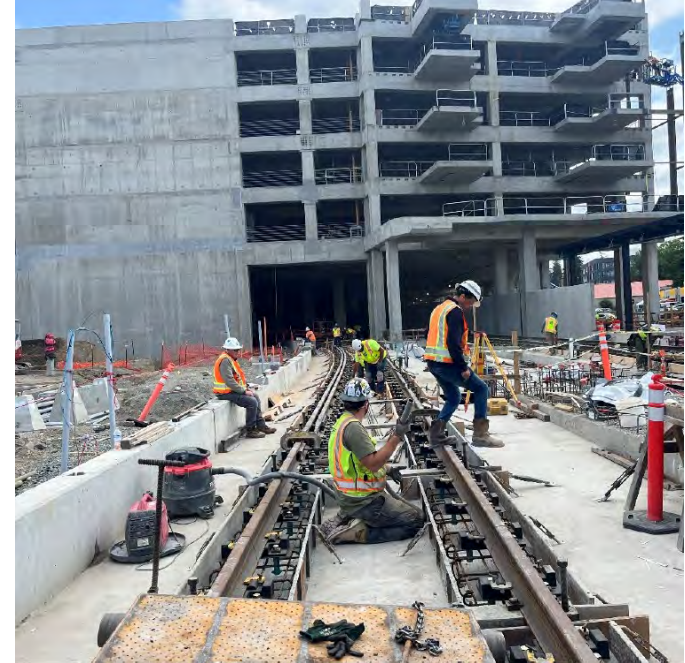
Downtown Redmond

Project status

- Construction remains on schedule with positive float.
- Track, station, and systems work continue.

Project risks and mitigations

- Execution of operation and maintenance agreements with partner agencies – developing timeline to complete.
- Station ramp up and sustained production on near critical path work to meet Systems Schedule.
- System Integrated Testing planned to start Q1 2024 - reviewing duration and overlap with other projects for resources during this period.

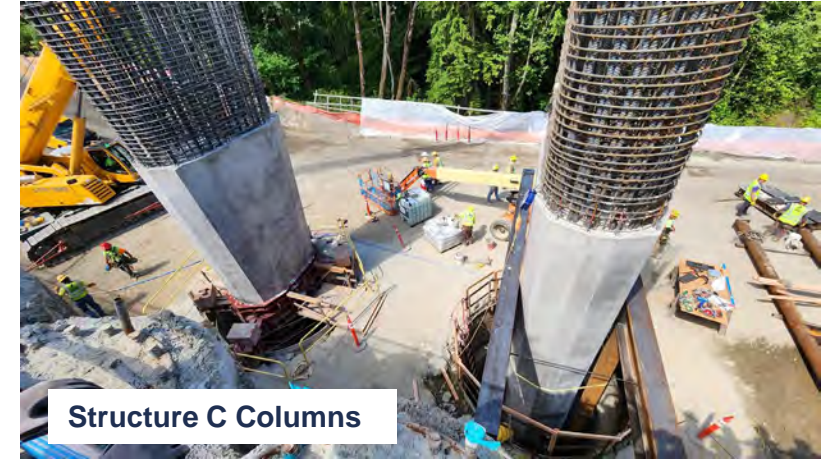


Federal Way

Federal Way

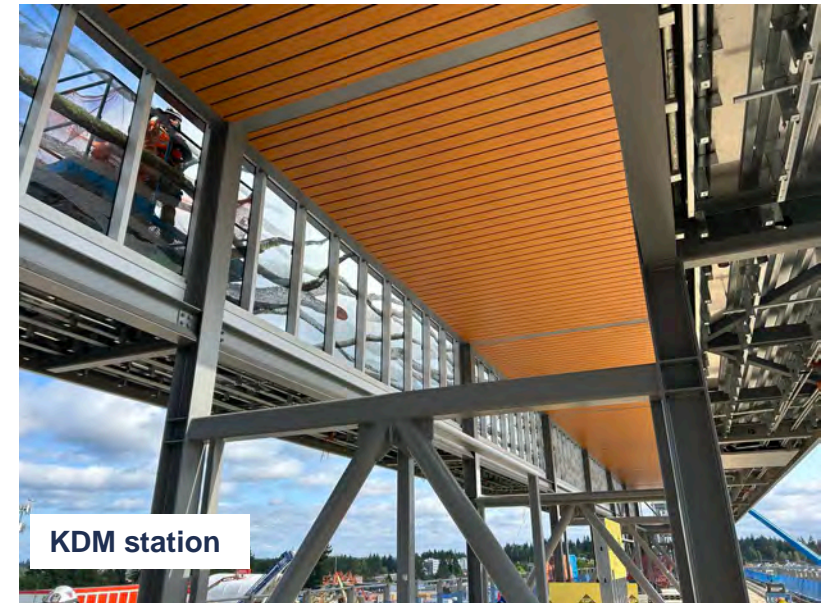
Project status

- Trackwork, stations, and garages progress on schedule.
- Systems work underway including traction power substation and overhead catenary system installation.
- Structure C long span bridge design complete and construction underway – 2 of 8 shafts completed and 2 columns in progress.



Project risks and mitigations

- Structure C Construction – Continue to meet challenges through collaboration with Design Builder and WSDOT
- Proximity and schedule of SR 509 project presents interface risk – close coordination and collaboration with WSDOT



***Lynnwood Link &
NE 130th Street Infill Station***

Lynnwood and NE 130th Street Infill Station

Project status

- Construction on schedule with positive float.
- Lynnwood City Center garage opened mid-April.
- NE 130th Station: Platform / canopy structures underway.



Project risks and mitigations

- Extended procurement of NE 130th Station Finishes Contract



Light rail vehicle fleet expansion

Light rail vehicle fleet expansion

Project status

- Manufacturing and assembly approx. 84% complete.
- 114 Series 2 vehicles delivered, 83 conditionally accepted for revenue service.
- Series 1 vehicle Automatic Train Protection retrofit underway, 21 of 62 to be complete by end of 2023.

Current risks and mitigations

- Addressing warranty issues limiting vehicle availability.
- Operational risk of not having enough vehicles and storage to support planned service levels – managing resolution of warranty items to optimize vehicle availability and evaluating alternate overnight storage locations.
- OMF Central yard capacity limited to 104 vehicles, constrains pace of commissioning work until mainline access to OMF East is available.



***Sumner, Kent, and Auburn
Stations Parking and
Access Improvements***

Sumner, Kent, and Auburn Station Parking and Access Improvements

Project status

- Sumner final design progressing to 90%, start of construction Q3 2023
- Auburn design-build contract award Q3 2023
- Selection of highest ranked design-build proposer for the Kent project Q3 2023



Sumner Sounder Station



Auburn Sounder Station

Sumner, Kent, and Auburn Station Parking and Access Improvements

Project risks and mitigations

- City permitting processes take longer than expected and include unanticipated conditions - continued coordination to reach alignment
 - No formal agreement with City on design deviations identified as critical in Kent
 - Sumner design review process is requiring extensive coordination
- Complexity of property acquisition in Auburn could result in project delay and budget pressure – elevated to CEO for engagement with Mayor.



Conceptual Rendering – Sumner Station Parking & Access Improvements

Summary

Next steps for Projects in Construction

- Continue to advance projects as safely and efficiently as possible.
- Meet quality expectations.
- Programmatic risk assessment update in third quarter.
- Establish Hilltop opening day.
- Focus on resources needed for opening of each line.
- Next update in 4th quarter.

Possible opening timeframes summary

Project	Possible opening timeframe
Hilltop Tacoma	September 2023
Starter Line	Spring 2024
Lynnwood	Summer/Fall 2024
NE 130th Street Station	Summer 2026
Downtown Redmond	Spring 2025
East Link	2025
Federal Way	2026
Sumner, Kent & Auburn	2026 - 2027

Thank you.



 [soundtransit.org](https://www.soundtransit.org)

