



Update on projects in construction

System Expansion Committee

10/12/2023



Why we're here

Quarterly Update on Projects in Construction

- Construction status
- Risks, challenges & mitigations
- Possible opening timeframes
- Next steps

Briefing only, no action required today.

Hilltop Tacoma Link

Hilltop Tacoma Link Extension

Project status

- Began Revenue Service on September 16, 2023.
- Issued substantial completion for the construction contract on September 15th, 2023.
- Conditionally Accepted all five LRVs with approved open item list

Project risks and mitigations

- May take longer or cost more than expected to complete all tasks identified during Pre-Revenue; monitoring progress weekly with responsible parties.
- Notices of intent to claim on construction contract.



Open for Revenue Service

East Link

East Link Starter Line

Project status:

- Completing system integration tests, as planned this month.
- Targeting November 1st for start of pre-revenue.
- Pedestrian crossing safety enhancements underway.
- Recently resolved construction claim - Overlake segment.
- Redmond Technology Station bus transit loop open, targeting October 30 for garage opening.
- Emergency preparedness exercise in Bellevue on October 28.



Video of power system test, two trains pulling away from station at same time.

East Link Starter Line

Project risks and mitigations

- Closed three top risks since July: Bellevue Station Stair Pressurization, BMS upgrades & PIMS installation, and uncertainty over emergency radio system changes.
- Timely start of pre-revenue depends on passing inspections, quality test reports, and as-builts.
- Managing completion of remaining work while training operators and simulating service; teams defining clear expectations and closely coordinating. Includes:
 - Safety enhancements such as elevated station guard rails and at-grade utility fencing –night & weekend work;
 - Replacement of platform tiles at South Bellevue Station – started work last month, anticipate February completion;
 - Downtown Bellevue tunnel smoke control modifications – agreed and in progress, meeting weekly, no anticipated permit risk for Pre-Revenue start.
- Developing plan to address platform tiles at Spring District Station.

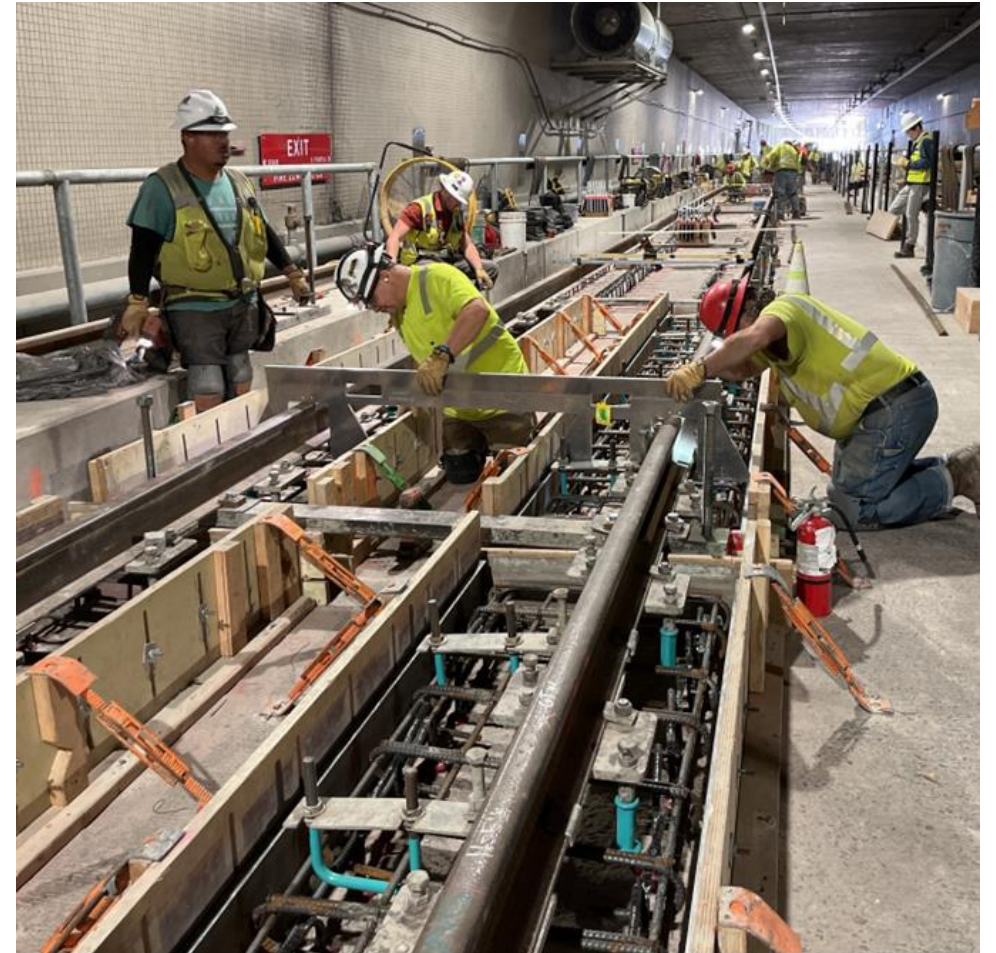
East Link (I-90 Corridor)

Project Status

- Concrete track plinth demolition 95% complete
- Concrete track plinth reconstruction 60% complete
- Forecast completing track plinths in April 2024

Project risks and mitigations

- Ongoing post-tension cable investigation on D2 and floating bridge approaches – 2 of 5 areas complete with no additional strengthening required.
- Polyurea coating on floating bridge needs significant repairs – 100% survey in progress, team is currently evaluating schedule impact due to weather dependency.

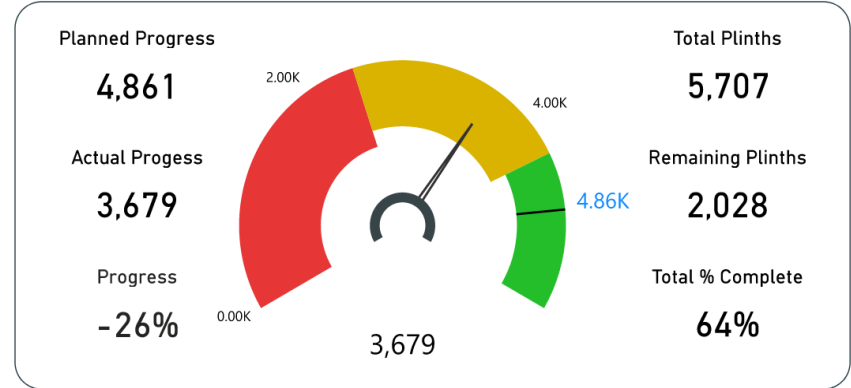


Quality inspection of formwork install in Mount Baker Tunnel

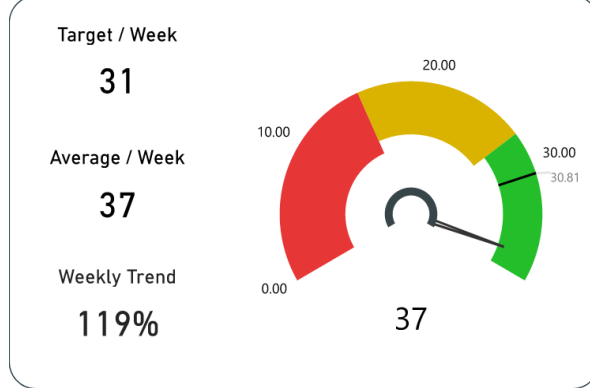
East Link (I-90 Corridor)

Plinth Rebuild Status

TOTAL PROGRESS

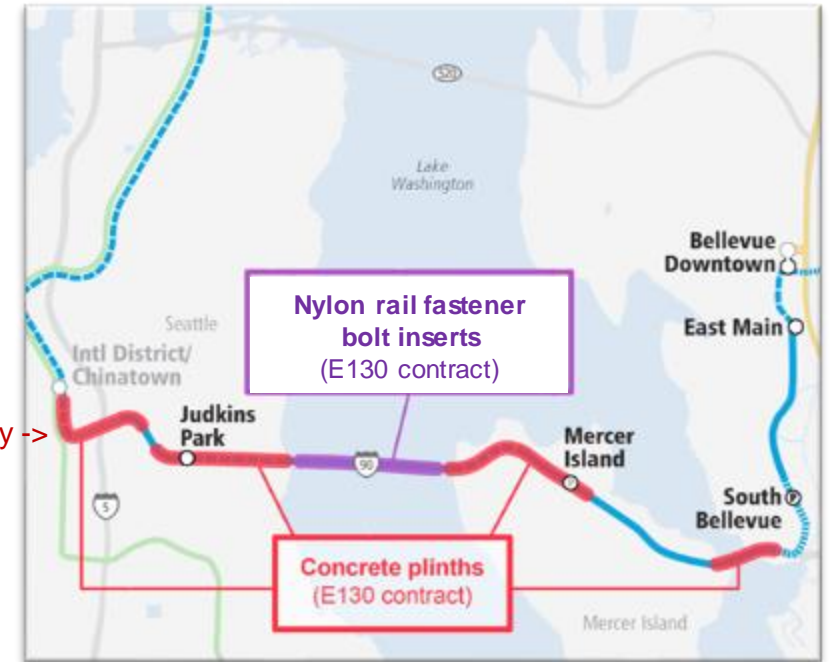


WEEKLY PROGRESS (AVERAGE)



		Field Data Tracking				
		Date	10/3/2023			
Location	Sum of Total Track Feet	As-PLANNED - FIELD	% Complete PLANNED	As-Built	% Complete AS-BUILT	% Actual vs. Planned
D2	7,196.11	2,891.00	40%	2,198.00	31%	76%
EA	4,806.88	971.50	20%	816.00	17%	84%
ECB	5,569.81	5,929.50	106%	5,312.00	95%	90%
JPS	3,771.70	2,644.00	70%	2,284.00	61%	86%
MBT	7,525.35	7,653.50	102%	6,848.50	91%	89%
MIS	2,159.72	961.00	44%	688.00	32%	72%
MIT	5,959.02	6,159.50	103%	5,533.00	93%	90%
WA	4,402.01		0%	-	0%	
Total	41,390.60	27,210.00	66%	23,679.50	57%	87%
	% (Actual VS Project Total)		57%			
	% (Actual VS Planned)		87%			

As of October 3, 2023



Downtown Redmond Link

Downtown Redmond

Project status

- Track is installed and survey in review.
- Stations, garage and systems work continue.

Project risks and mitigations

- Station finish and systems sustained production on critical path – design-builder is adding resources to meet planned schedule
- System Integrated Testing (SIT) planned to start Q2 2024 – considering options to begin earlier and gain schedule float for unanticipated issues during phase.



Marymoor Village Garage



Downtown Redmond Station

Federal Way Link

Federal Way

Project status

- Trackwork, stations, and garages on schedule.
- Systems work continues including traction power substation and overhead catenary system installation.
- Structure C long span bridge - all shafts and columns have been constructed. Both long span pier tables are under construction.

Project risks and mitigations

- Pre-revenue readiness requirements may take longer to meet than anticipated – coordinating across disciplines to efficiently integrate all activities in the project schedule
- Proximity and schedule of SR 509 project presents interface risk – close coordination and collaboration with WSDOT



***Lynnwood Link &
NE 130th Street Infill Station***

Lynnwood and NE 130th Street Infill Station

Project status

- Construction on schedule with positive float.
- Systems Integration Testing (SIT) is scheduled to begin in October 2023.
- NE 130th Street Infill Station Finishes contract received Notice To Proceed on August 30, 2023.



Project risks and mitigations

- May experience delays securing Certificate of Occupancy from the multiple jurisdictions.
- Work for remaining station finishes on NE 130th Street Infill Station adjacent to active rail traffic during testing.



Light rail vehicle fleet expansion

Light rail vehicle fleet expansion

Project status

- Manufacturing and assembly approx. 87% complete.
- 118 Series 2 vehicles delivered, 92 conditionally accepted for revenue service.
- Series 1 vehicle Automatic Train Protection retrofit underway; implementation completed in 17 cars.

Current risks and mitigations

- Warranty issues limiting vehicle availability.
- OMF Central capacity constrains pace of commissioning work until mainline access to OMF East is available.
- Operational risk of not having enough vehicles and storage to support planned service levels – balancing work on warranty items with commissioning time to optimize LRV availability and planning for alternate overnight storage locations.



***Sumner, Kent, and Auburn
Stations Parking and
Access Improvements***

Sumner, Kent, and Auburn Station Parking and Access Improvements

Project status

- Sumner final design progressing to 90%, start of construction Q4 2023
- Auburn design-build contract award Q4 2023
- Kent design-build contract award Q4 2023

Project risks and mitigations

- City permitting may take longer than expected and include unanticipated conditions - continue coordination to align, including agreement on deviations identified as essential in Kent.
- Complex property acquisition in Auburn delayed notice to proceed with potential cost impact in review.



Sumner design-builder's proposal rendering



Auburn design-builder's proposal rendering

Stride Bus Rapid Transit

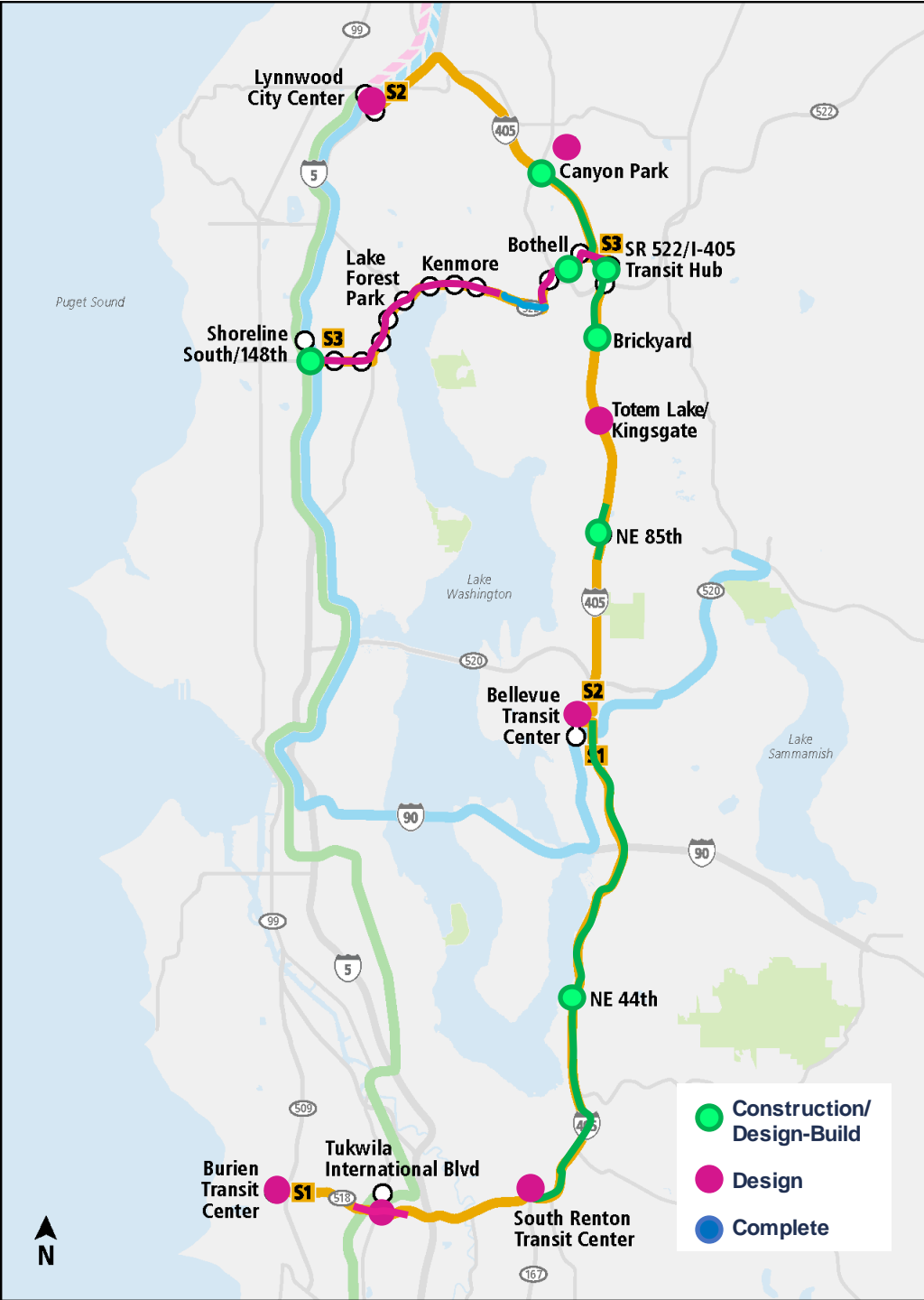
Stride BRT Program status

Construction

- S1 Burien-Bellevue
 - NE 44th design-build underway
 - TIBS construction agreement in development
- S2 Bellevue-Lynnwood
 - NE 85th design-build underway
 - Brickyard-SR522-Canyon Park contracts awarded
- S3 Bothell-Shoreline
 - Bothell-Kenmore BAT lane: complete 2022
 - UW-Cascadia College station: underway
- Station finishes installation – contract awarded

Fleet and Systems:

- Fleet orders approved and in progress
- Systems in procurement



Summary

Next steps for projects in construction

- Continue to advance projects as safely and efficiently as possible.
- Meet quality expectations.
- Focus on resources needed for opening of each line.
- Next update in Q1 2024

Possible opening timeframes summary

Project	Possible opening timeframe
Starter Line	Spring 2024
Lynnwood NE 130th Street Station	Summer/Fall 2024 Summer 2026
Downtown Redmond	Spring 2025
East Link	2025
Federal Way	2026
Sumner, Kent & Auburn	2026 – 2027
Stride BRT	2028 – 2029

Thank you.



 [soundtransit.org](https://www.soundtransit.org)

