

# *Projects in Construction Update*

*System Expansion Committee*  
*6/12/2025*



# *Why we are here*

## *Quarterly Update on Projects in Construction*

- Summary of construction progress for active projects.
- Project schedule and budget updates.
- Information on future mobility and traffic impacts.

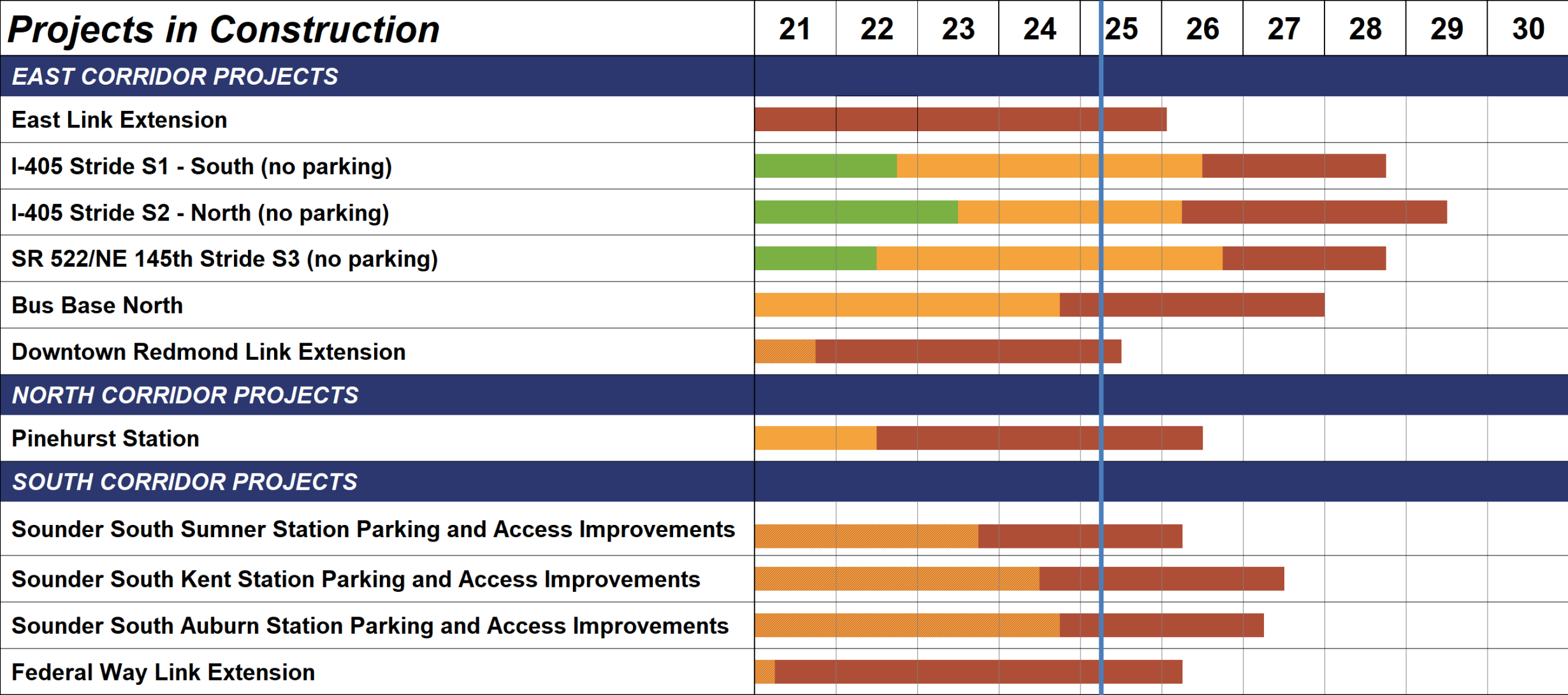
*No action requested today; information only.*

# Agenda










- **Overview**
  - Construction Overview
  - Performance Tracker Summary
- **Project Updates**
  - East Link Extension (ELE)
  - Federal Way Link Extension (FWLE)
  - Pinehurst (NE 130th St) Infill Station
  - Sounder Stations Parking & Access Improvements
  - Stride Bus Rapid Transit Program
  - State of Good Repair (SOGR) Program



# Construction Overview



# Key Performance Indicator Legend

Status Indicator			
	Favorable Trend	Level Trend	Unfavorable Trend
Meets or Exceeds Target			
Not meeting Target Minor Variance			
Not meeting Target Major Variance			

# Project Performance Tracker Summary

## Projects in Construction

Mode	Projects	% Construction Complete (Avg)	Cost KPI (Avg)	Schedule KPI (Avg)	Safety KPI (Avg)*
Link Extension (4)	<ul style="list-style-type: none"><li>DRLE, ELE, FWLE</li><li>Pinehurst Station</li></ul>	92% (+2%)			
Sounder (3)	<ul style="list-style-type: none"><li>Sumner, Kent, Auburn garages</li></ul>	32% (+3%)			
Stride-WSDOT & Third Party Managed (3)	<ul style="list-style-type: none"><li>I-405 (S1) – WSDOT</li><li>I-405 (S2) – WSDOT</li><li>SR 522/NE 145<sup>th</sup> (S3) – Third Party</li></ul>	54% (+8%)			N/A

## Link Extension Target Revenue Service Date KPI Detail



Status Indicator			
	Favorable Trend	Level Trend	Unfavorable Trend
Meets or Exceeds Target			
Not meeting Target Minor Variance			
Not meeting Target Major Variance			

***East Link Extension***

# East Link Extension

## Project Overview

- 14 miles of rail (7 currently open).
- 10 Stations (8 currently open).
- 3 parking facilities (all currently open).

## Project Benefits

- Cross-lake connection between Seattle and Redmond.
- Access to the Operation and Maintenance Facility (OMF) East providing additional capacity for 1- and 2-lines.
- Increased frequency of Light Rail Vehicles (LRVs) between International District and Lynnwood City Center.



*No action requested today; information only*



# East Link Extension

<b>Project Overview:</b>	Extends light rail 14 miles from Downtown Seattle to the Overlake area of Redmond and includes 10 new stations and 3 parking facilities. The segment from South Bellevue to Redmond Technology Station (7 miles and 8 stations) opened in April 2024.
<b>Budget:</b>	\$3.757B currently approved.
<b>Project Completion:</b>	99%, Starter 2-Line open.
<b>Schedule:</b>	Open for Service: <b>Early 2026 forecast</b>



## Financial Snapshot (in millions)

	Baseline Budget	Committed	Incurred	Est. Final Cost (EFC)	EFC Variance* to Budget**
Total Cost	\$3,757	\$3,625	\$3,578	\$3,708	\$49

\*For variances: Positive = under budget and Negative = over budget

\*\*The ELE Baseline budget amended from \$3.677M to \$3.757M via Resolution R2024-23.

# East Link Extension

## Remaining Work

- Construction elements
  - Commissioning of cathodic protection system
  - Approval of Sound Transit submittals to WSDOT
- System Integration Testing
- Pre-Revenue Operations
- Simulated Service

## Future Mobility & Traffic Impacts

- Localized lane closures to complete landscaping and final civil work along the corridor.
- Downtown Seattle Transit Tunnel outages for signal system upgrades to support Automatic Train Protection (ATP) for 4-minute headways between International District Station and Lynnwood.





# ***East Link Extension***



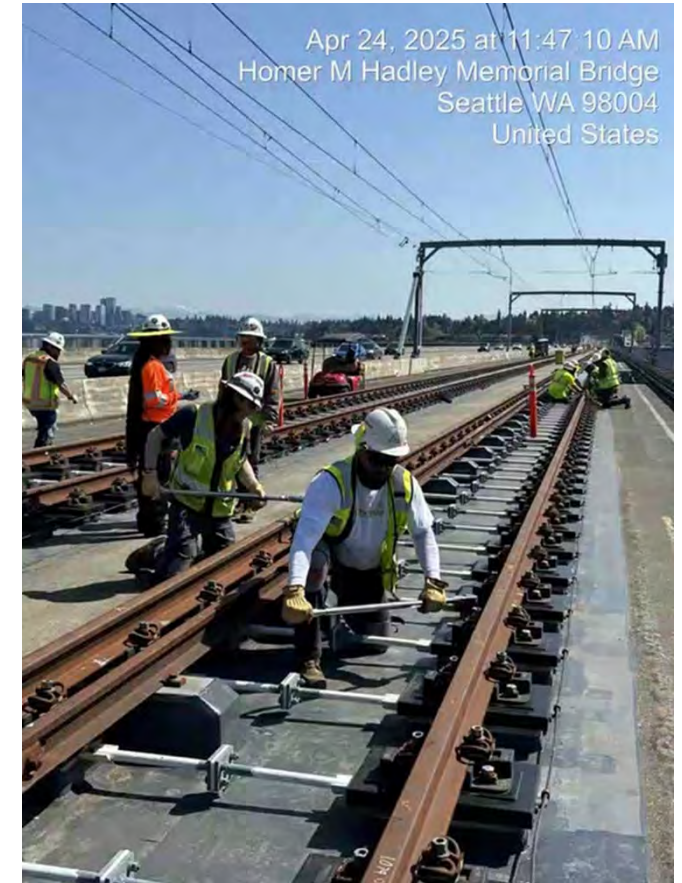
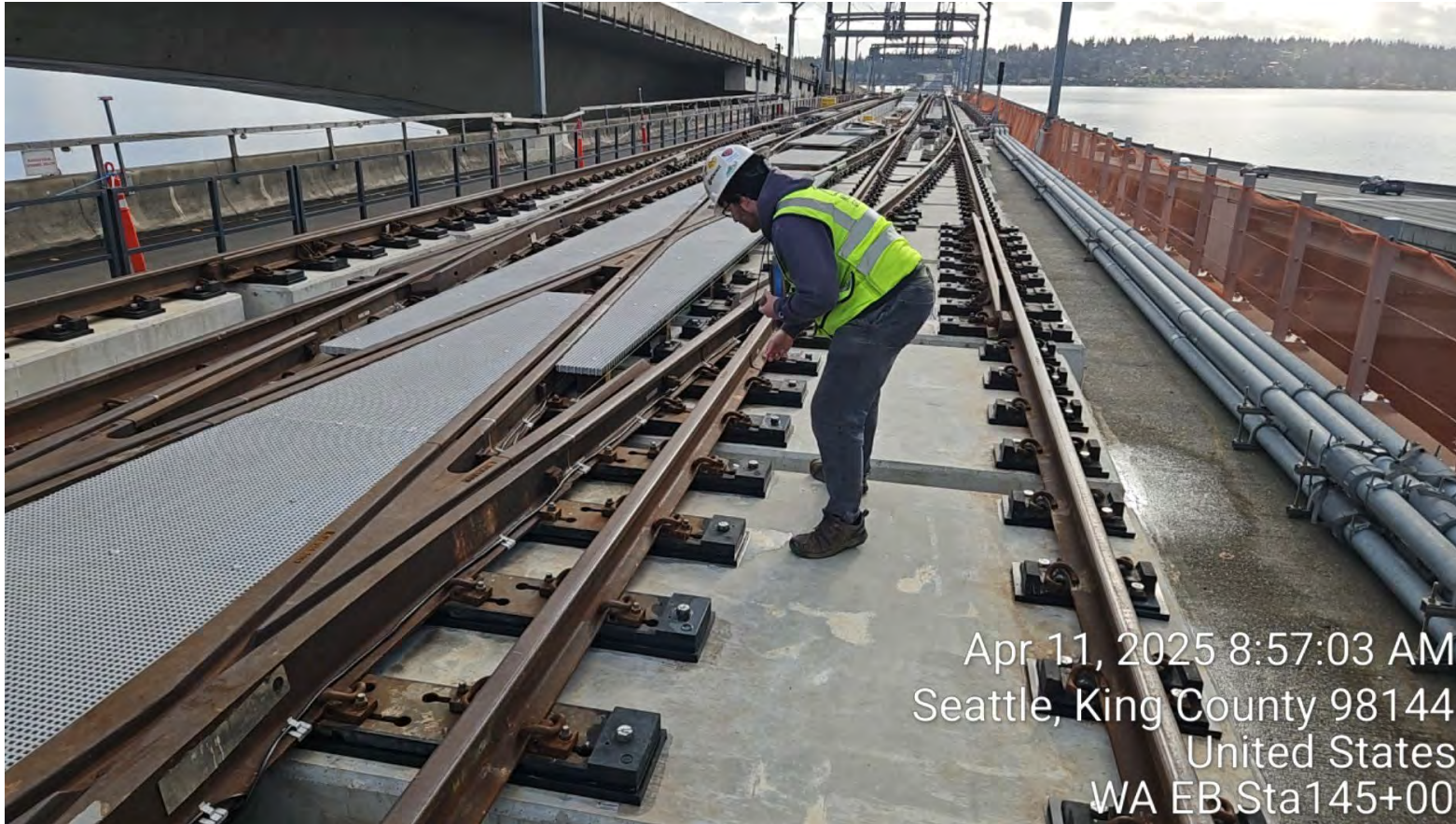
***Judkins Park Station Aerial View***



***Mercer Island Station Aerial View***



# East Link Extension



***Final Rail Alignment and Bolt Torque on Floating Bridge***

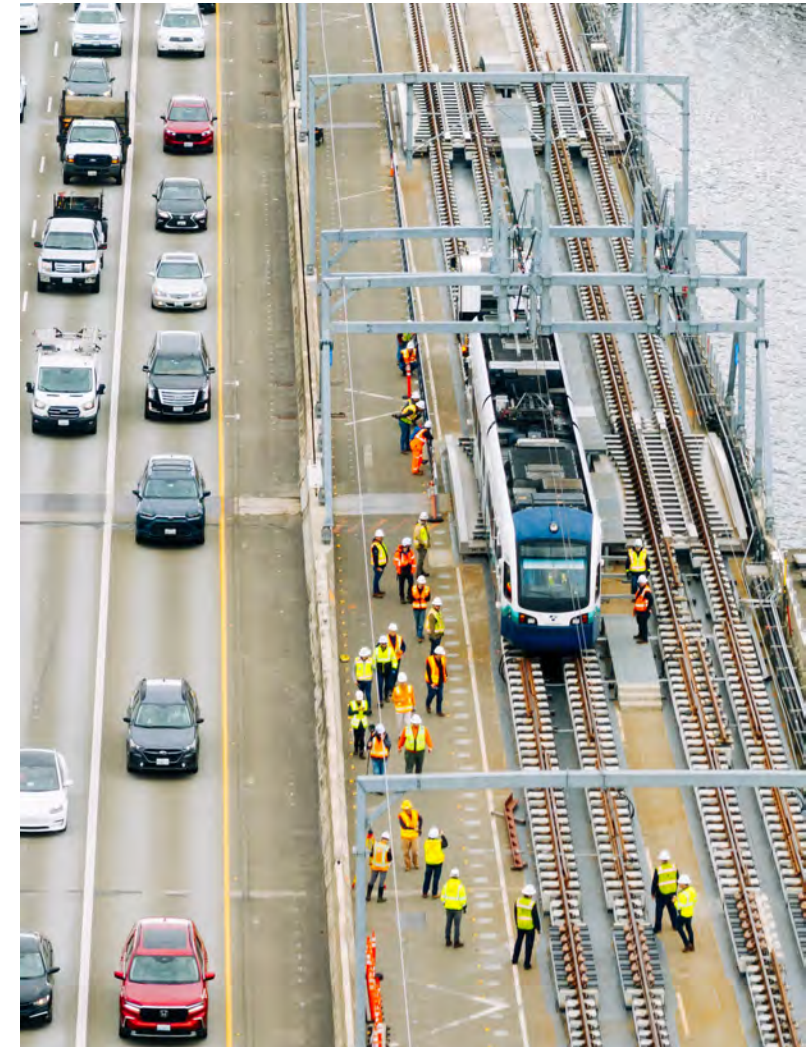
# *East Link Extension*



*Overhead Cable Installation Along Floating Bridge (Systems)*



# *East Link Extension*



*Floating Bridge Trackwork & Overhead Catenary*

# ***Federal Way Link Extension***

# Federal Way Link Extension

## Project Overview

- 7.8 miles of rail.
- 3 Stations.
- 2 new garages and an extension to one garage.

## Project Benefits

- 1 Line extends from Angle Lake to South King County communities. Providing access to SeaTac airport.
- Future access to the Operation & Maintenance Facility (OMF) South providing additional capacity for 1 and 2 Lines.



*No action requested today; information only*



# Federal Way Link Extension

<b>Project Overview:</b>	Extends 7.8 miles of light rail from the Angle Lake Station City of Federal Way, with 3 Stations and Garages.
<b>Budget:</b>	\$3.161B
<b>Project Completion:</b>	96% complete.
<b>Schedule:</b>	Open for service: Q1 2026

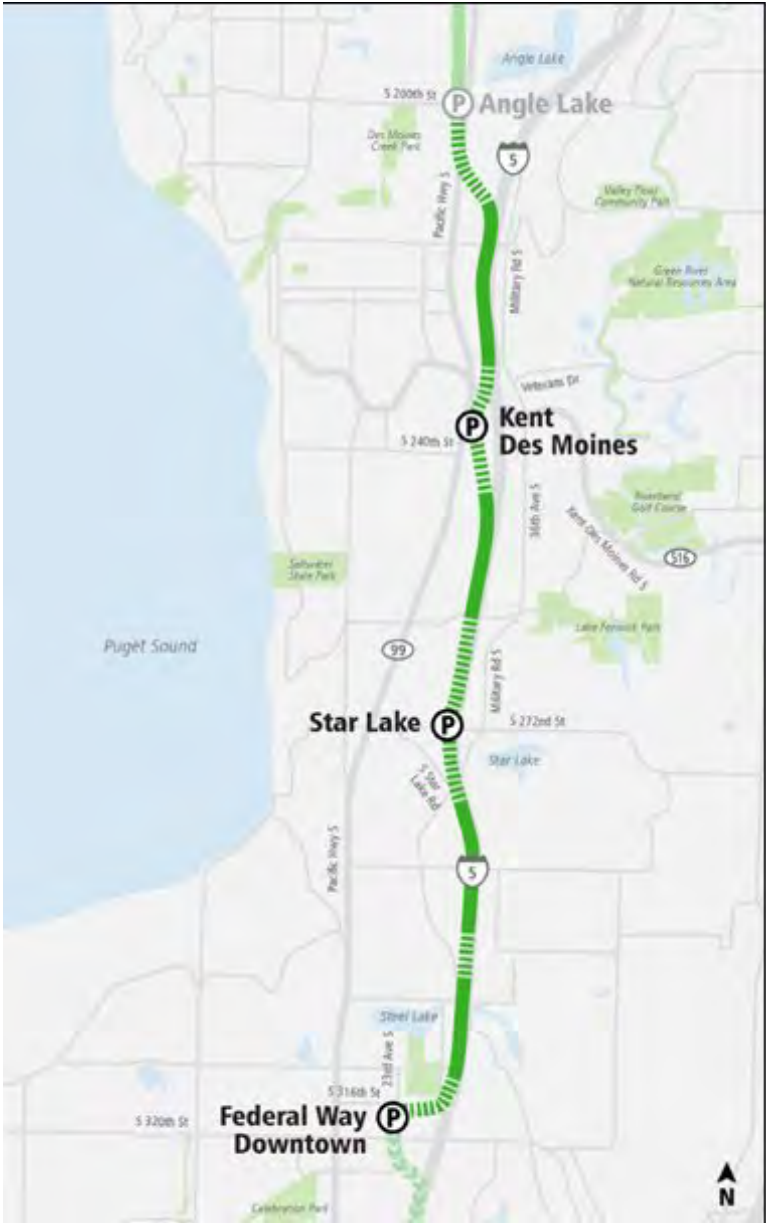
Site	Garages	Stations
Kent-Des Moines	100%	100%
Star Lake	99%	97%
Federal Way	95%	99%

## Financial Snapshot (in millions)

	Baseline Budget	Committed	Incurred	Est. Final Cost (EFC)	EFC Variance* to Budget**
Total	\$3,161	\$2,290	\$2,168	\$2,670	\$491

\*For variances: Positive = under budget and Negative = over budget

\*\* The FFGA budget includes costs for Vehicles, P65 Contingency, and Finance Charges that are in addition to the ST Board Authorized Budget of \$2,452M. The EFC for the FFGA project is approximately \$491M below the FFGA budget.



# Federal Way Link Extension

## Remaining Works

- Federal Way roadwork and overall civil closeout
- System Integration Testing
- Pre-Revenue Operations
- Simulated Operations

## Future Mobility & Traffic Impacts

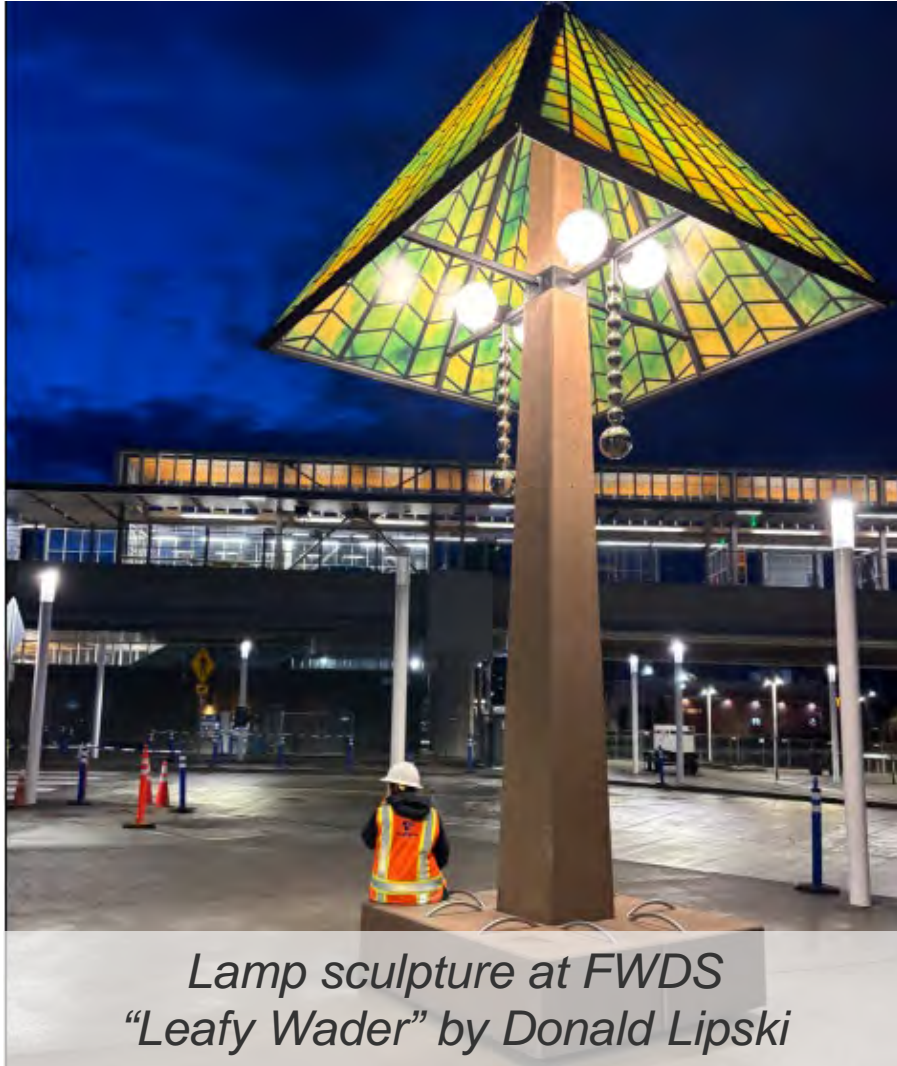
- Work is ongoing at Federal Way Downtown Station block including the 23rd Ave S/ S 317th St roundabout.
- Work is in progress on Traffic Mitigation, which begins at the intersection of Military Rd S. and S. Reith Road.
- Haul route restoration with City of Kent and City of Federal Way. The major roadways include S 320th St, Military Road S, and S 272nd St.
- Late night (22:00) closure of Angle Lake Station to facilitate testing for connection to the existing system.



Federal Way Downtown Roundabout Looking SW



# *Federal Way Link Extension Artwork*





# *Federal Way Link Extension*



*Kent Des Moines Station and Garage, April 10, 2025*



*Kent Des Moines Station*



# *Star Lake Station and Garage*





# Federal Way Link Extension

## Federal Way Downtown Campus

*Ribbon cutting for Federal Way  
Downtown Station Bus Loop  
March 26, 2025*



*Federal Way Downtown Station Bus Loop – opened March 30, 2025*



# *Federal Way Link Extension*



# ***Pinehurst Infill Station***



# ***Pinehurst Station (NE 130th Street Infill Station)***

## ***Project Overview***

- Construct an elevated infill station at NE 130th St and 5th Ave NE in North Seattle.

## ***Project Benefits***

- New station will serve a growing residential neighborhood between the Northgate and Shoreline South/148th stations and will be built on the existing Lynnwood Link Extension.



***No action requested today; information only***

# ***Pinehurst Station (NE 130th Street Infill Station)***

<b>Project Overview:</b>	Construct an elevated infill station at NE 130th St and 5th Ave NE in North Seattle.
<b>Budget:</b>	\$240 M
<b>Project Completion:</b>	72% complete
<b>Schedule:</b>	Open for Service: end of Q2 2026 forecast



### Financial Snapshot (in millions)

	Baseline Budget	Committed	Incurred	Est. Final Cost (EFC)	EFC Variance* to Budget**
<b>Total</b>	<b>\$240</b>	<b>\$185</b>	<b>\$132</b>	<b>\$221</b>	<b>\$19</b>

*\*For variances: Positive = under budget and Negative = over budget*

# ***Pinehurst Station (NE 130th Street Infill Station)***

## ***Remaining Works***

- Final civil construction: 4 stair towers, plaza finishes, elevators and escalators, and street improvements
- Installation of communication devices
- System Integration Testing
- Pre-Revenue Service Operations
- Simulated Service

## ***Future Mobility & Traffic Impacts***

- NE 130th St I-5 NB Off Ramp closed: June 14 – June 29.
- NE 130<sup>th</sup> St I-5 NB Off Ramp closed on weekends: June 14 – Aug. 17 (excluding July 5 – 6).
- NE 130th St Eastbound overpass closed (westbound open): June 14 – August 17.
- Periodic single tracking to complete station work: July – Q1 2026.





# ***Pinehurst Station (NE 130th Street Infill Station)***



# *South Sounder Stations Parking & Access Improvements*

# Sumner, Kent, and Auburn Sounder Station Parking and Access Improvements

<b>Project Overview:</b>	Constructs 3 new parking garages, surface parking lots (1,595 net new stalls) and a range of pedestrian and non-motorized station access improvements at the Sumner, Kent and Auburn Sounder Stations
<b>Budget:</b>	\$359.7M
<b>Project Completion:</b>	32% complete
<b>Schedule:</b>	Open for service: Q2 2027

## Financial Snapshot (in millions)

	Baseline Budget	Committed	Incurred	Est. Final Cost (EFC)	EFC Variance* to Budget
<b>Total</b>	<b>\$359.7</b>	<b>\$261.1</b>	<b>\$129.8</b>	<b>\$325.1</b>	<b>\$34.5</b>

\*For variances: Positive = under budget and Negative = over budget



# ***Sumner, Kent, and Auburn Sounder Station Parking and Access Improvements***

## ***Project Context***

- Demand for parking at Sounder stations exceeded capacity prior to the pandemic.
- In contrast to Link, 55-65% riders access Sounder service by private vehicle or drop off

## ***Project Scope***

- Sumner: 505 net new stalls in a 612 stall 5-story garage & 24 new surface parking spaces
- Kent: 415 net new stalls in 464 stall, 5-story garage & new 39 stall surface parking lot
- Auburn: 675 net new parking stalls in a 6-story garage.
- Partnered with cities to improve sidewalk and bicycle access to the station area
- Delivering a new \$9M bus layover facility in Kent



# Sumner, Kent, and Auburn Sonder Station Improvements

## Current project status

- All three project sites are now in construction. Sumner is fully permitted
- Project Baseline Budget: \$359.7M
- Project Allocations / Open for Service Dates:

Sumner	\$108.1M / Q1 2026
Kent	\$122.8M / Q2 2027
Auburn	\$128.8M / Q1 2027

## Remaining Works

- Building permit issuance for Kent, complete superstructure construction and all fit-out and finishes
- Commissioning, testing, training, and transition project to operations





# *Sumner Sounder Station Improvements*





# Kent Sounder Station Improvements





# *Auburn Sounder Station Improvements*



# ***Stride Bus Rapid Transit Program (I-405 Construction with WSDOT)***

# *Stride Sound Transit and WSDOT Improvements*

<b><i>Purpose:</i></b>	Jointly providing speed and reliability improvements for the Stride Program
<b><i>Key Responsibilities:</i></b>	<ul style="list-style-type: none"> <li>• Provide new or expanded Express Toll Lanes (ETLs) to provide faster and consistent travel times</li> <li>• BRT stations located in the center of the freeway to take advantage of ETLs</li> </ul>
<b><i>Project Elements Included:</i></b>	<ul style="list-style-type: none"> <li>• ETLs and Bus Only lanes</li> <li>• BRT stations and passenger amenities</li> <li>• Vertical Transportation</li> <li>• Safety and security systems</li> <li>• Connections to other HCT systems</li> </ul>

### Financial Snapshot (in millions)

	Baseline Budget	Committed	Incurred	Est. Final Cost (EFC)	EFC Variance* to Budget**
<b>Total Cost</b>	<b>\$638</b>	<b>\$609</b>	<b>\$271</b>	<b>\$638</b>	<b>\$0</b>





# Brickyard to SR 527

<b>Project Elements:</b>	Includes dual express toll lanes along I-405, including 4 BRT stations, S3 line layover, and bus charging yard.
<b>Project Completion:</b>	30%
<b>Schedule:</b>	Open for Service: 2029 forecast.



# NE 85th Street Inline Station

<i><b>Purpose:</b></i>	Includes an S2 inline station with Express toll lane entrance and exit. This station will service ST Express prior to BRT service.
<i><b>Project Completion:</b></i>	<b>60%</b>
<i><b>Schedule:</b></i>	Open for Service: ST Express Service - <b>end of Q4 2026</b> ; BRT Service - <b>2029 forecast</b> .





# NE 44th Street Inline Station

<b>Purpose:</b>	Includes an S1 inline station and dual Express Toll lanes.
<b>Project Completion:</b>	76%
<b>Schedule:</b>	Open for Service: 2028 forecast.





# *State of Good Repair Program*

# ***What is State of Good Repair (SOGR)***

## ***Purpose***

Maintain Sound Transit's infrastructure, systems, and facilities in a safe, reliable, and functional condition to support long-term service.

## ***Key Responsibilities***

- Deliver capital projects that extend asset life and reduce service disruptions
- Prioritize repair and replacement needs based on risk and condition
- Coordinate with internal teams to align work with operational requirements

## ***Project Types Included***

- Electrical upgrades (e.g., 26kV systems, lighting)
- Tunnel/station improvements (e.g., drainage, structural work)
- Vertical conveyance and accessibility enhancements
- Safety and security system replacements

# SOGR Projects in Construction Highlights

Project	Project Name	Budget	Percent Complete	Completion
P1197A	Vertical Conveyance Modernization at IDS	\$18,765,938	29%	Q4 2026
P1335	SeaTac Airport Plaza Second Elevator	\$9,734,960	14%	Q2 2026
P1088	Fare Paid Zone at Light Rail Stations	\$7,300,000	88%	Q4 2025
P1189	WLS Unused Back of House Reconfiguration	\$2,230,363	40%	Q4 2026
P1407	DSTT-26kV Condition Assessment & Upgrades	\$1,728,172	80%	Q4 2025
P1431	DSTT-South Portal Drainage Improvements	\$1,150,630	0%	Q1 2027
P1353	OMFC Vehicle Gates Replacement	\$1,120,634	40%	Q1 2026
P1403	Auburn Station Plaza Lighting	\$862,037	70%	Q4 2025
P1260	Issaquah Garage Deck Rebar Exposure Repairs	\$800,000	90%	Q3 2025
P1421	Auburn Garage Leased Space Water intrusion	\$704,741	80%	Q4 2025
P1177	DSTT- Station Power Assessment	\$680,959	90%	Q3 2025
P1570	DSTT Power Distribution System - 480V	\$659,381	40%	Q3 2026

*The SOGR portfolio currently has 130 active projects in planning, design, and construction phases, totaling \$143M.  
SOGR currently has 23 projects totaling \$48M, in construction.*

# International District Station Vertical Transportation Modernization Project

<b>Scope</b>	Modernize 4 elevators and 4 escalators at the IDS Station
<b>Objective</b>	Increase reliability and reduced maintenance costs
<b>Lifetime Budget</b>	\$18.7M
<b>Expenditures</b>	\$6.8M
<b>Project Completion</b>	<b>29%</b> complete.
<b>Delivery</b>	<b>Q2 2026</b>



*Upgraded Elevator at the International District Station*

*ST Vertical Transportation Team responsible for delivery.*

# SeaTac Airport Plaza Second Elevator

<b>Scope</b>	Construction of a second elevator at the SeaTac Link Station.
<b>Objective</b>	Provide accessibility and redundancy.
<b>Lifetime Budget</b>	\$9.7M
<b>Expenditures</b>	\$1.4M
<b>Project Completion</b>	<b>14%</b> complete.
<b>Delivery</b>	<b>Q2 2026</b>



*Rendition of the completed construction of the elevator.*



# Fare Paid Zone

<b>Scope</b>	Enhance demarcation of Fare Paid Zone at all stations.
<b>Objective</b>	Provides new location for card readers to improve passenger flow and clearly mark paid zones.
<b>Lifetime Budget</b>	\$7.3M
<b>Expenditures</b>	\$6.4M
<b>Project Completion</b>	<b>88%</b> complete.
<b>Delivery</b>	<b>Q4 2025</b>



*Fare Paid Zone signage and marking,  
International District Station*

# What's Next for SOGR

Project Name
Traction Power Substations Siemens Platform Upgrades
Backup Power Mitigation Facilities System
Bollard and Barrier Additions Multi-Modal
Eastgate Freeway Station Site Improvements
Mukilteo Station Fence Repairs
Link Station Bird Control Project - Phase 2
Issaquah Transit Center Site Improvements
Link Station Bench replacement
Fac Maint Portfolio Waste Receptacles
Auburn Station/Garage Comfort Station Improvements
Union Station Great Hall Water Damage Repairs
Mt Baker Water Intrusion
Weller Bridge Workroom / Union Station Garage Fenced Storage Area Electrical Project
Edmonds Shelter TVM Upgrade

## Upcoming Projects

- Onboarding of 14 projects **Q2 2025.**
- Onboard an additional 14 by **Q3 2025.**

# *Next Steps*

- Continue to advance projects as safely and efficiently as possible.
- Focus on resources needed for openings.
- Keep Board apprised of progress and issues.
  - Next update in **Q4 2025**.



*Thank you.*



 *soundtransit.org*

